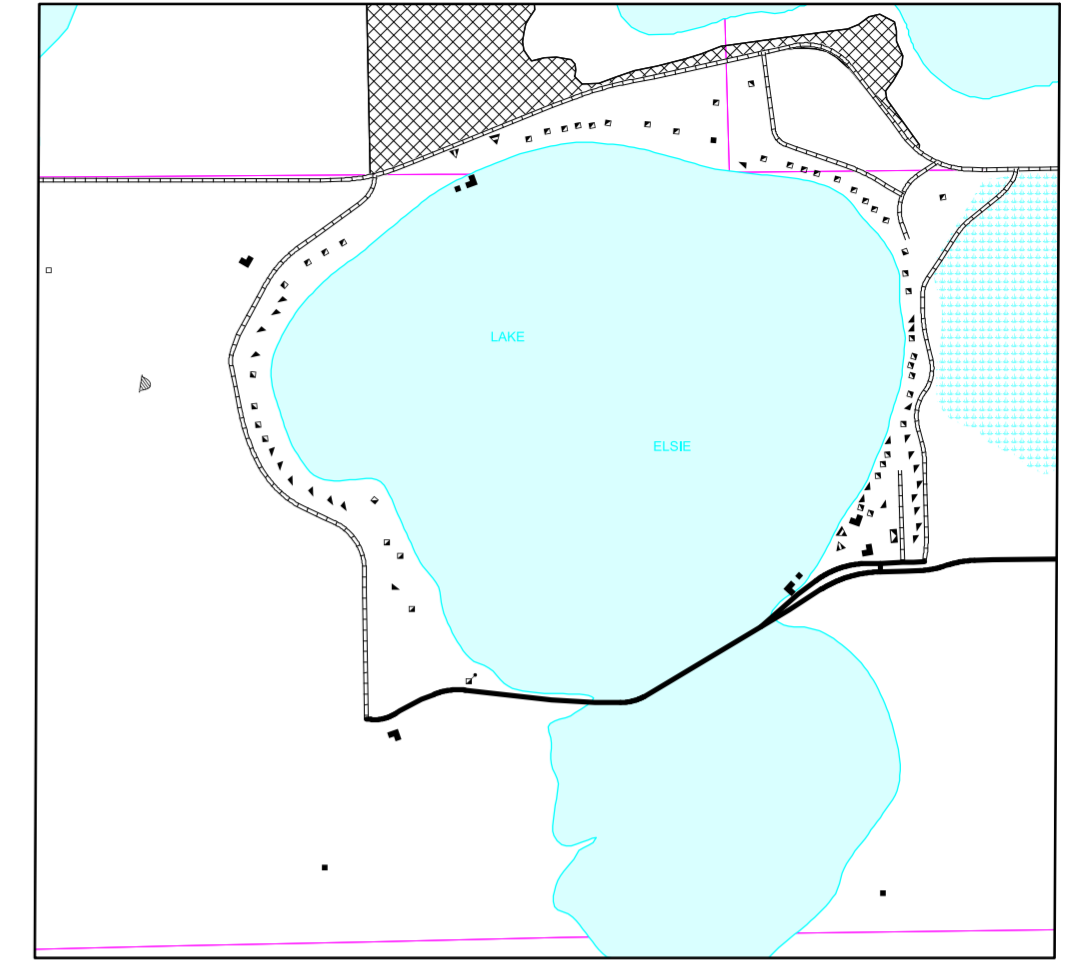
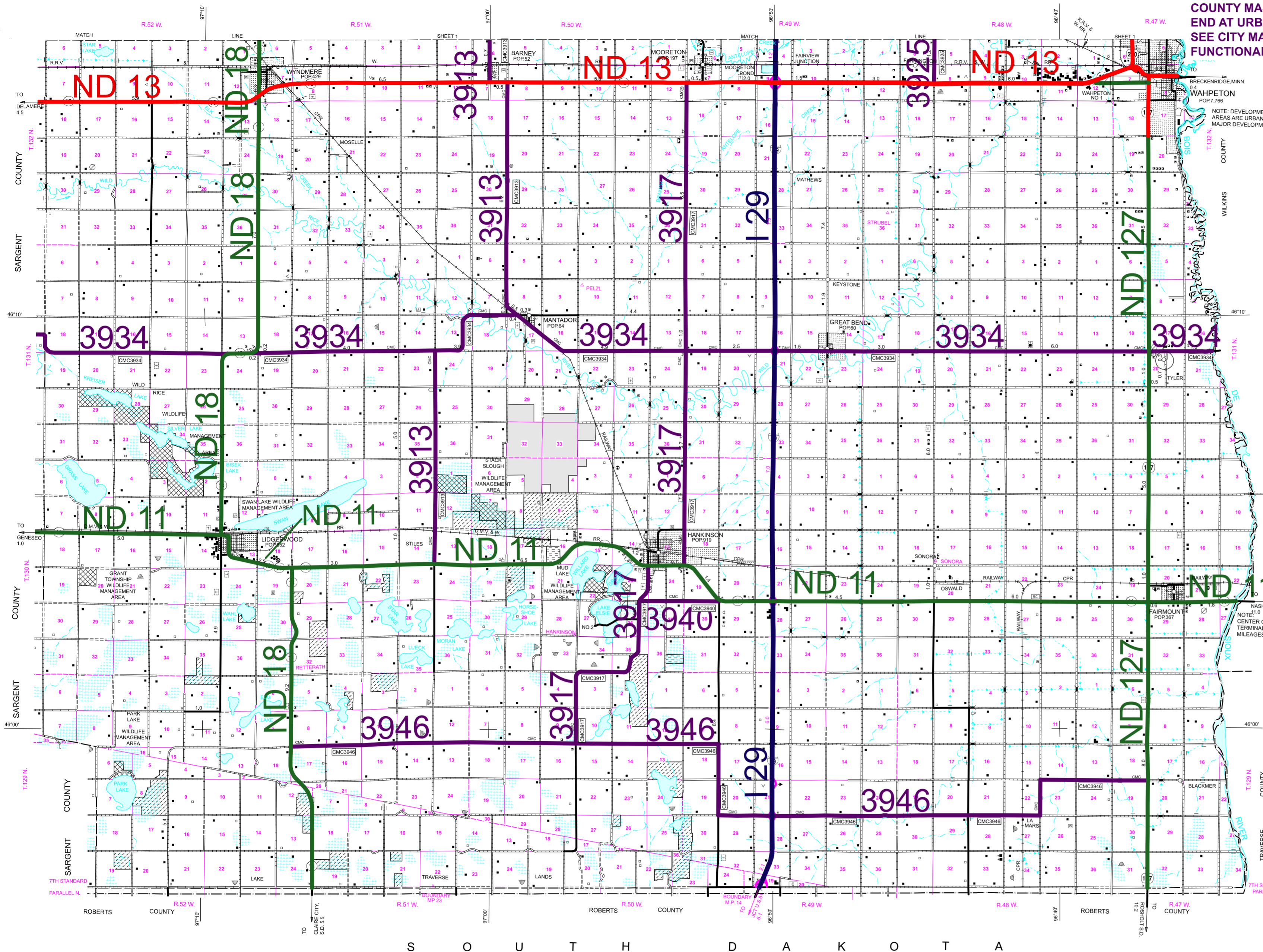


2007 FUNCTIONAL CLASSIFICATION

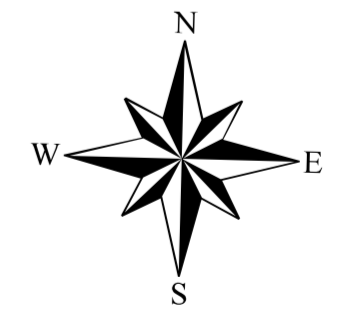
COUNTY MAJOR COLLECTORS
END AT URBAN AREA
SEE CITY MAP FOR URBAN
FUNCTIONAL CLASSIFICATION



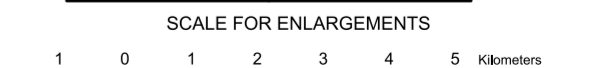
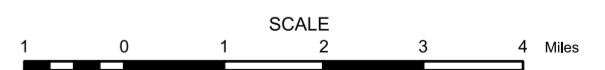
INSET NO. 2
SECS. 22, 23, 26, 27, T. 130 N., R. 50 W.

NAME AND LOCATION OF
ORGANIZED CIVIL TOWNSHIPS
THOSE UNORGANIZED ARE SO NOTED

- | | |
|--------------------------------|------------------------------------|
| T. 136 N.-R. 52 W. HELENDALE | T. 132 N.-R. 48 W. CENTER |
| T. 136 N.-R. 51 W. BARRIE | T. 132 N.-R. 47 W. CENTER |
| T. 136 N.-R. 50 W. WALCOTT | T. 131 N.-R. 52 W. DEXTER |
| T. 136 N.-R. 49 W. WALCOTT | T. 131 N.-R. 51 W. LIBERTY GROVE |
| T. 136 N.-R. 49 W. EAGLE | T. 131 N.-R. 50 W. BELFORD |
| T. 136 N.-R. 48 W. EAGLE | T. 131 N.-R. 49 W. BRANDENBURG |
| T. 135 N.-R. 52 W. SHEYENNE | T. 131 N.-R. 48 W. SUMMIT |
| T. 135 N.-R. 51 W. VIKING | T. 131 N.-R. 47 W. SUMMIT |
| T. 135 N.-R. 50 W. COLFAX | T. 130 N.-R. 52 W. GRANT |
| T. 135 N.-R. 49 W. COLFAX | T. 130 N.-R. 51 W. MORAN |
| T. 135 N.-R. 49 W. EAGLE | T. 130 N.-R. 50 W. BRIGHTWOOD |
| T. 135 N.-R. 48 W. EAGLE | T. 130 N.-R. 49 W. WALDO |
| T. 134 N.-R. 52 W. FREEMAN | T. 130 N.-R. 48 W. DE VILLO |
| T. 134 N.-R. 51 W. GARBERG | T. 130 N.-R. 47 W. FAIRMOUNT |
| T. 134 N.-R. 50 W. NANSEN | T. 129 N.-R. 47 W. FAIRMOUNT |
| T. 134 N.-R. 49 W. ABERCROMBIE | T. 129 N.-R. 52 W. DUERR |
| T. 134 N.-R. 48 W. ABERCROMBIE | L.T.L.T. 129 N.-R. 52 W. DUERR |
| T. 133 N.-R. 52 W. WEST END | T. 129 N.-R. 51 W. DUERR |
| T. 133 N.-R. 51 W. HOMESTEAD | L.T.L.T. 129 N.-R. 51 W. DUERR |
| T. 133 N.-R. 50 W. ANTELOPE | T. 129 N.-R. 50 W. ELMA |
| T. 133 N.-R. 49 W. IBSEN | L.T.L.T. 129 N.-R. 51 W. ELMA |
| T. 133 N.-R. 48 W. DWIGHT | L.T.L.T. 129 N.-R. 50 W. ELMA |
| T. 133 N.-R. 47 W. DWIGHT | T. 129 N.-R. 49 W. GREENDALE |
| T. 132 N.-R. 52 W. WYNDMERE | L.T.L.T. 129 N.-R. 50 W. GREENDALE |
| T. 132 N.-R. 51 W. DANTON | L.T.L.T. 129 N.-R. 49 W. GREENDALE |
| T. 132 N.-R. 50 W. BARNEY | T. 129 N.-R. 48 W. LA MARS |
| T. 132 N.-R. 49 W. MOORETON | |



RICHLAND COUNTY



2008

BASED ON AERIAL PHOTOGRAPHY OF 1954
GROUND INVENTORY OF 2008
AERIAL INVENTORY OF 2008

UNIVERSAL TRANSVERSE MERCATOR ZONE 14
NORTH AMERICAN DATUM 83

SHEET 1 OF 2

LEGEND

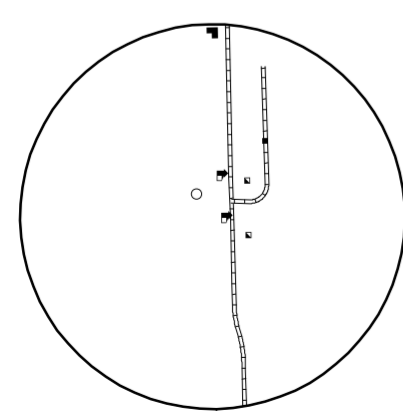
- INTERSTATE
- PRINCIPAL ARTERIAL
- MINOR ARTERIAL
- MAJOR COLLECTOR

REVISION DATE AND CHANGE

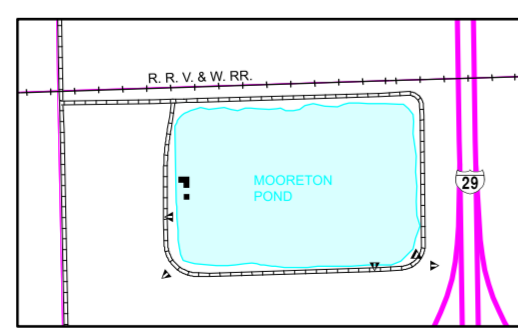
- 06-24-2013 Added 11.5 miles to CMC3946
- 05-04-2015 Added 6.0 miles to CMC3913
- 05-04-2015 Added 2.5 miles to CMC3940
- 05-04-2015 Added 5.0 miles to CMC3917
- 05-04-2015 Added 15.5 miles to CMC3946



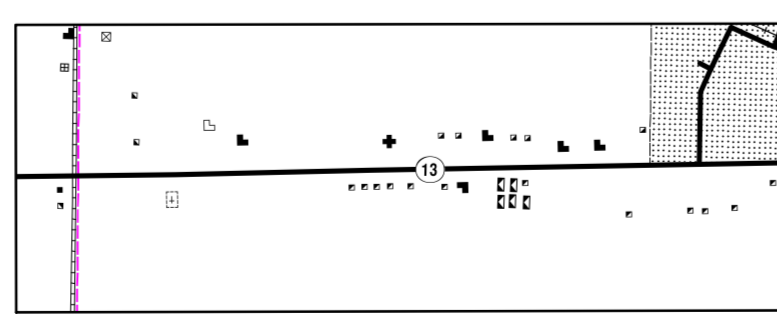
STATE OF NORTH DAKOTA
DIAGRAM OF COUNTIES



TYLER
SEC. 20, T. 131 N., R. 47 W.



MOORETOWN POND
SEC'S 4, 5, 8, 9, T. 132 N., R. 49 W.



WAHPETON NO. 1
SEC. 7, T. 132 N., R. 47 W.
SEC. 12, T. 132 N., R. 48 W.