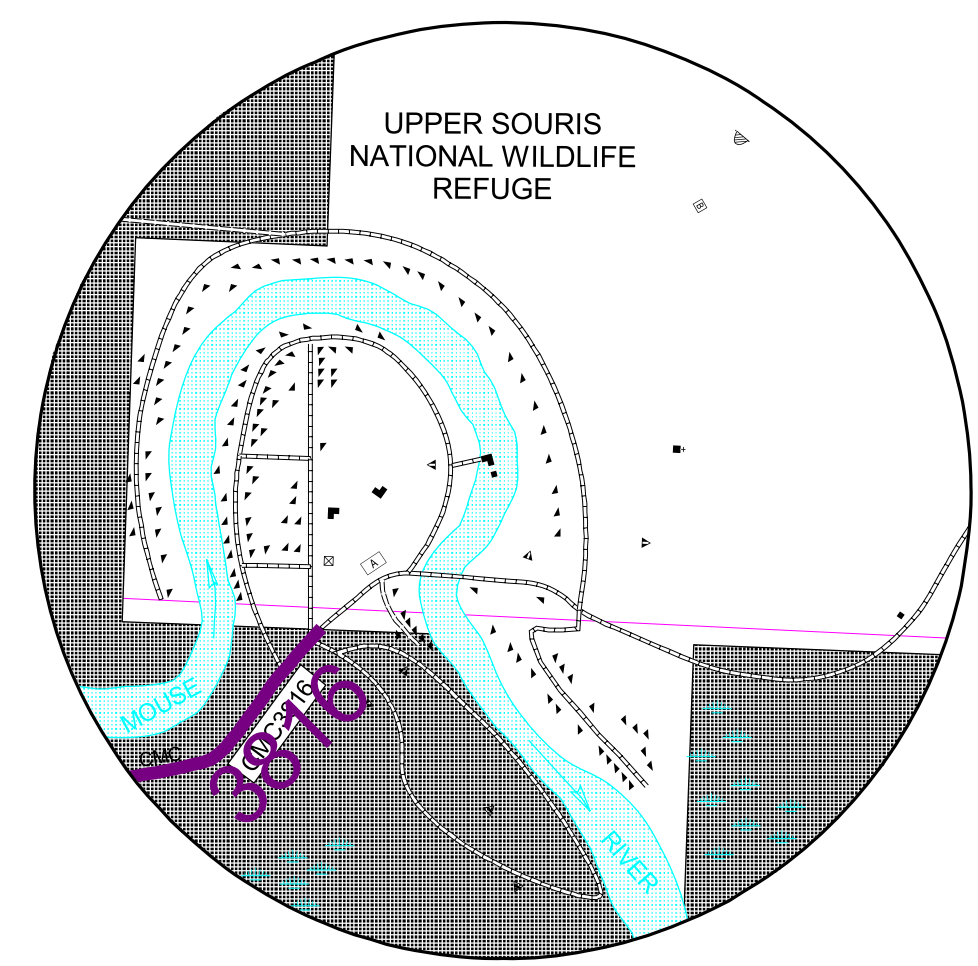
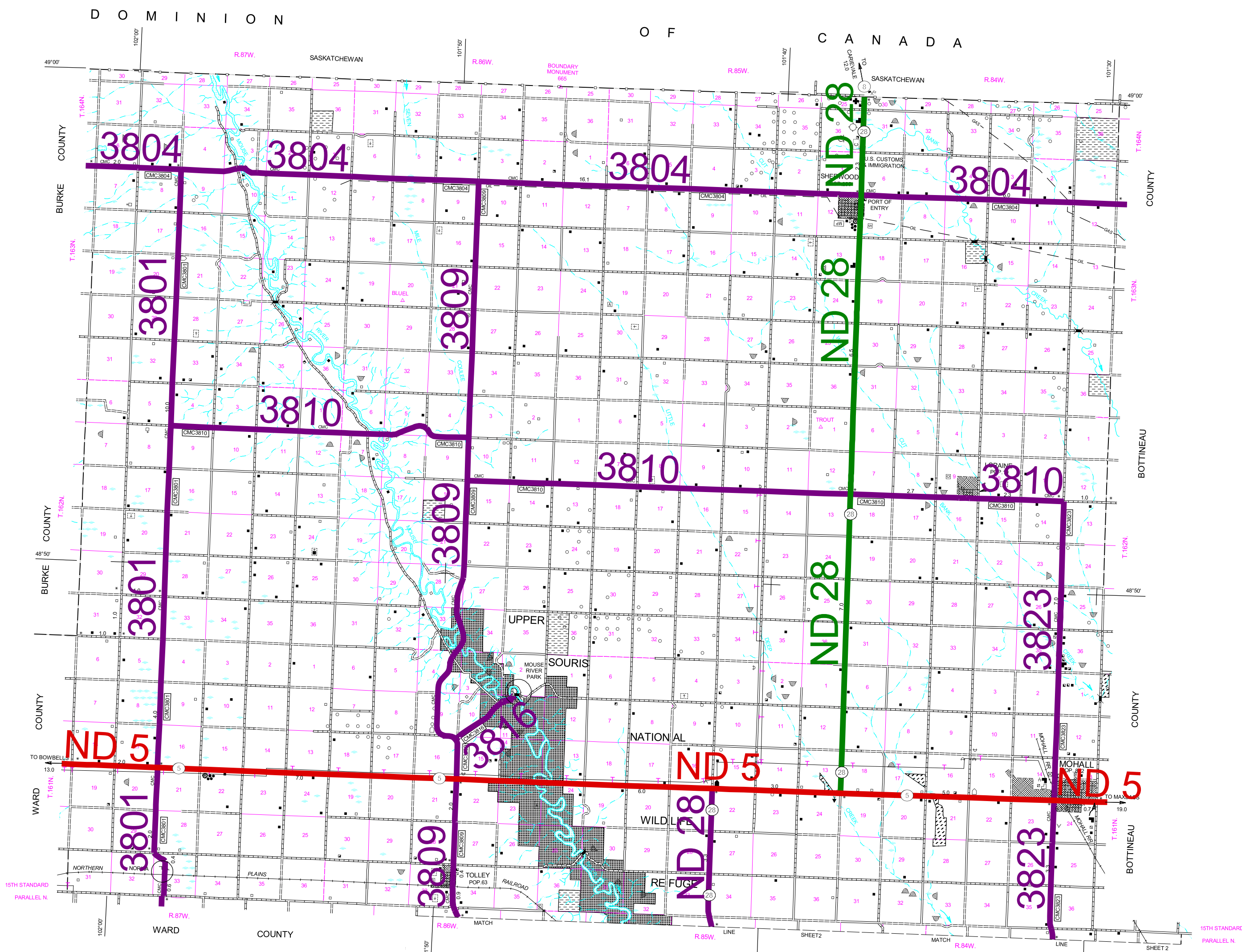
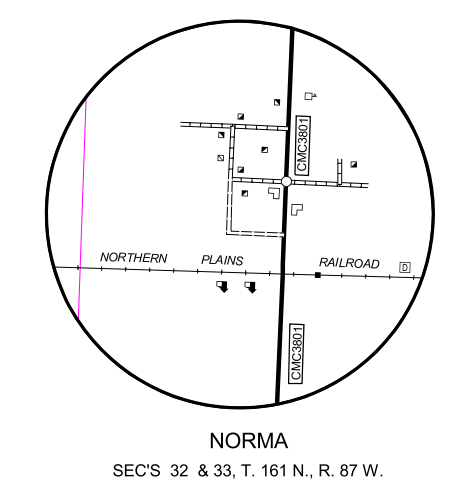


2007 FUNCTIONAL CLASSIFICATION



MOUSE RIVER PARK
SECS 2 & 11, T. 161 N., R. 86 W.



NORMA
SECS 32 & 33, T. 161 N., R. 87 W.

GENERAL LEGEND	
ROADS AND ROADWAY FEATURES	FARM UNITS, DWELLINGS, ETC.
PRIMITIVE ROAD	FARM UNIT (FARM UNITS SHOWN IN MUNICIPAL LIMITS INDICATE FARM BUILDINGS FOR FARM USE)
UNIMPROVED ROAD	DWELLING OTHER THAN FARM
GRAVEL AND DRAINED ROAD	BARRACKS, OR DORMATORIES FOR STUDENTS, WORKERS, IMMIGRANTS, ETC.
PAVED ROAD	SEASONAL OR SUMMER COLONY
4 LANE UNDIVIDED HIGHWAY	DWELLING
DIVIDED HIGHWAY	CHURCH
HIGHWAY WITH FULL CONTROL OF ACCESS	CEMETERY
STREETS IN UNINCORPORATED TOWNS	CHURCH WITH CEMETERY ADJACENT
CLOVERLEAF OR INTERCHANGE	WELL
INDIAN SERVICE ROAD	
COUNTY MAJOR COLLECTOR	CONSERVATION AND RECREATION
ROUTE NUMBER	SCENIC SITE
POINTS BETWEEN WHICH DISTANCES ARE MEASURED	CAMP SITE, NO PERMANENCE (TENTS OR TRAILER PARKING)
INTERSTATE NUMBERED HIGHWAY	SKI AREA
U.S. NUMBERED HIGHWAY	GOLF GROUND OR COUNTRY CLUB
STATE HIGHWAY SYSTEM	FAIR GROUND, RACE COURSE, SPEEDWAY
RAILROADS	INDUSTRIAL
RAILROAD (ANY NUMBER OF TRACKS USED BY A SINGLE OPERATING CO.)	STORE OR SMALL BUSINESS ESTABLISHMENT
RAILROAD STATION	FACTORY OR INDUSTRIAL PLANT
RAILROAD GRADE CROSSING	GAS TANK
	GROUP OF STORAGE TANKS (OIL OR GAS)
STRUCTURES	GAUGING OR PUMPING STATION
HIGHWAY BRIDGE, GENERAL	WAREHOUSE - GENERAL
HIGHWAY GRADE SEPARATION	GRAIN ELEVATOR
DAM WITH ROAD	GRAVEL PIT
MINOR DRAINAGE STRUCTURE	
CONCRETE FORD OR DIP	EDUCATIONAL AND CORRECTIONAL INSTITUTIONS
	SCHOOLHOUSE
DRAINAGE	INTERMITTENT STREAM (NARROW)
NARROW STREAM	TOWNHALL, GRANGE, OR COMMUNITY HALL
WIDE STREAM	AGRICULTURAL EXPERIMENT STATION
WIDE STREAM WITH DAM	
LAKE, RESERVOIR, OR POND	AIRPORTS
LAKE, RESERVOIR, OR POND WITH DAM	AIRFIELD, LIMITED FACILITIES
MARSH OR SWAMP LAND	LANDING AREA OR STRIP
DRAINAGE DITCH	
	PUBLIC SERVICE FACILITIES
NAVIGATION	POST OFFICE
DOCK, PIER, OR LANDING	HIGHWAY GARAGE
	GARAGE OR RUBBISH DUMP
BOUNDARIES	SEWAGE DISPOSAL PLANT
MONUMENTED BOUNDARY MARKER	WATER SUPPLY STAND PIPE OR TANK
COUNTY LINE	PIPE LINE, GAS
TOWNSHIP LINE	PIPE LINE, OIL
CORPORATE LINE	TRANSMISSION LINE
SECTION LINE	POWER SUBSTATION
MATCH LINE BETWEEN ADJOINING SHEETS OF SAME COUNTY	U.S. BORDER CUSTOMS STATION
BOUNDARY TO MARK ENLARGEMENT INSET	COMMUNICATION TOWER
MONUMENT - SMALL, HISTORIC SITE	BROADCASTING STATION (RADIO OR TV)
WILDLIFE MANAGEMENT AREA	
WATERFOWL PRODUCTION AREA	MISCELLANEOUS
STATE SCHOOL LAND	TRIANGULATION STATION
NATIONAL REFUGES	DOT TO INDICATE LOCATION OF ANY CULTURAL FEATURE SHOWN OUT OF POSITION
	ALL VACANT CULTURE INDICATED BY OPEN SYMBOL
CITY AND VILLAGE CENTERS	LATITUDE AND LONGITUDE
COUNTY SEAT	
OTHER CITIES AND VILLAGES	
INCORPORATED CITY OR VILLAGE (GENERALIZED)	

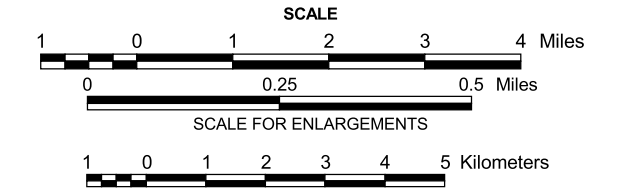
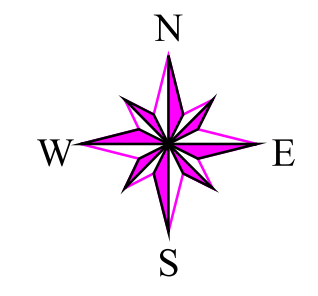
LEGEND

- PRINCIPAL ARTERIALS
- MINOR ARTERIALS
- MAJOR COLLECTORS

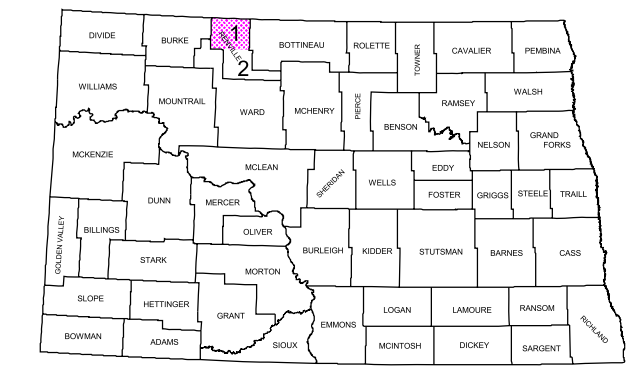
GENERAL HIGHWAY MAP RENVILLE COUNTY NORTH DAKOTA

PREPARED BY THE
NORTH DAKOTA DEPARTMENT OF TRANSPORTATION
PLANNING AND PROGRAMMING DIVISION

IN COOPERATION WITH THE
U.S. DEPARTMENT OF TRANSPORTATION
FEDERAL HIGHWAY ADMINISTRATION



2003



STATE OF NORTH DAKOTA
DIAGRAM OF COUNTIES

COPIES OF THIS MAP ARE AVAILABLE FOR PUBLIC USE AT A NOMINAL COST FROM:
ADDRESS: MAP SALES, N.D. DEPT. OF TRANSPORTATION, 608 E. BLVD. AVE., BISMARCK, N.D. 58505-0700

BASED ON AERIAL PHOTOGRAPHY OF 1953
GROUND INVENTORY OF 2003
AERIAL INVENTORY OF 2003

UNIVERSAL TRANSVERSE MERCATOR ZONE 14
NORTH AMERICAN DATUM 83