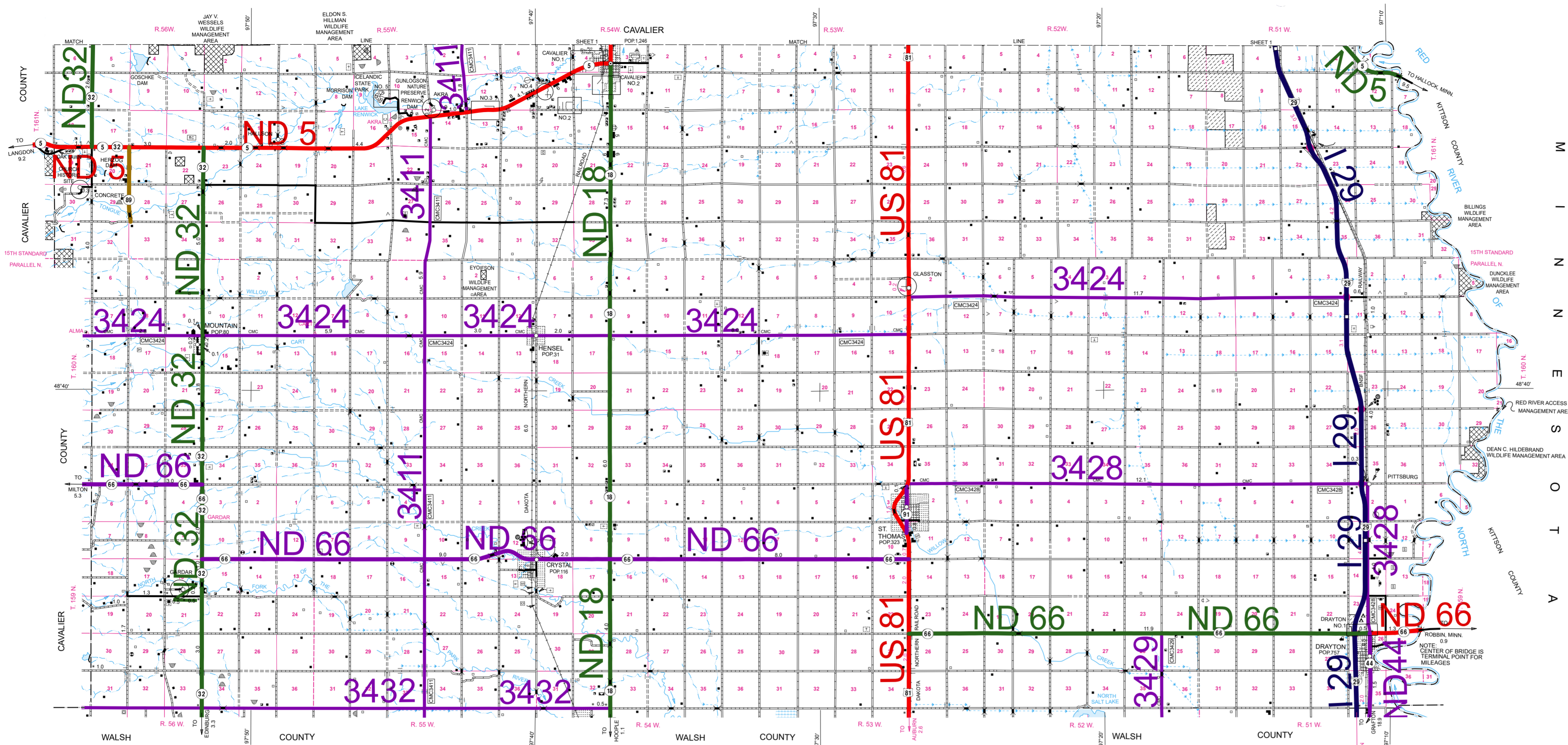


2007 FUNCTIONAL CLASSIFICATION

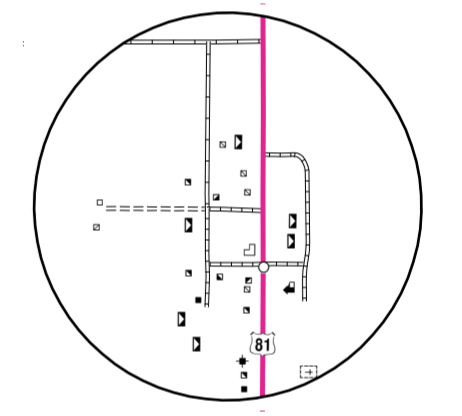
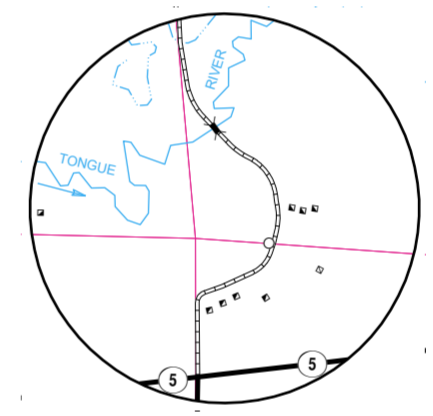
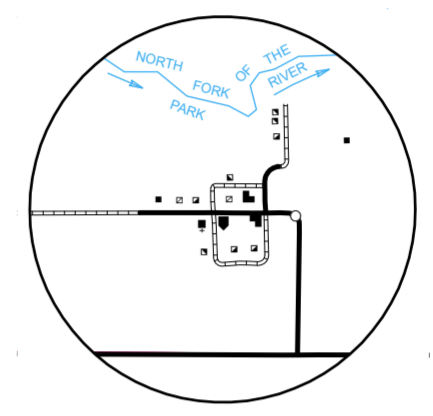
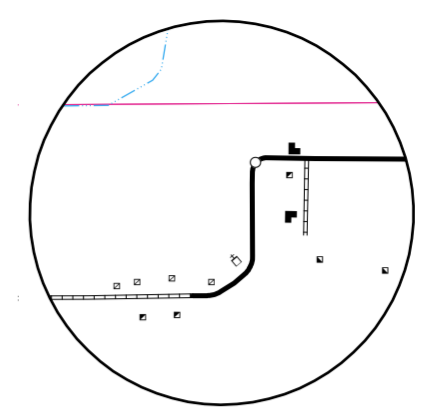


FUNCTIONAL CLASSIFICATION

- INTERSTATE
- PRINCIPAL ARTERIAL
- MINOR ARTERIAL
- MAJOR COLLECTOR

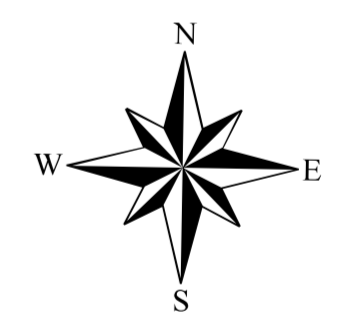
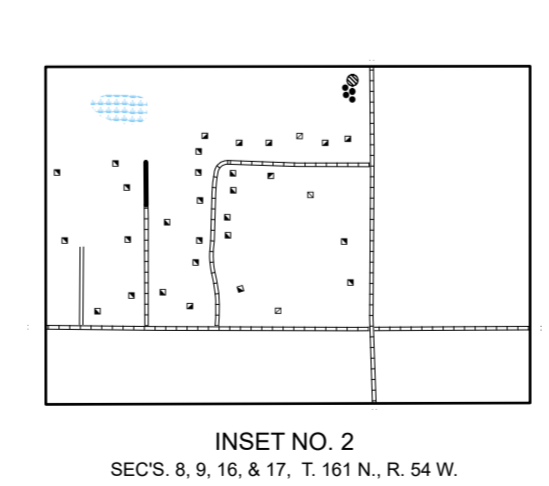
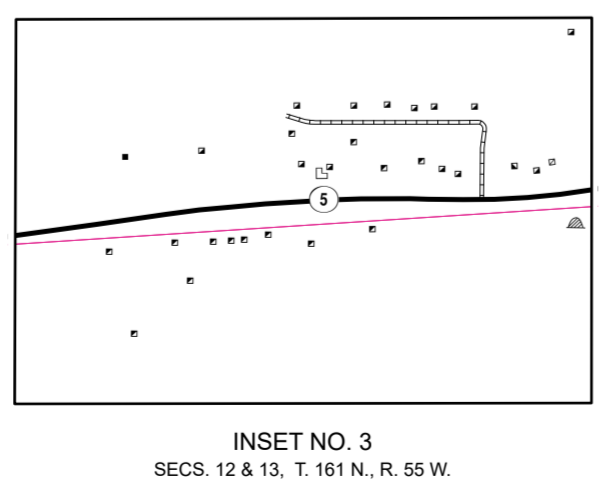
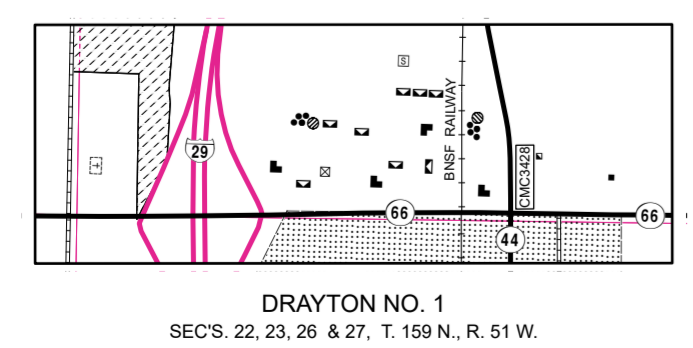
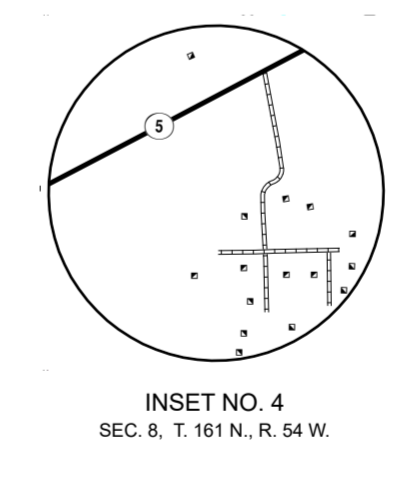
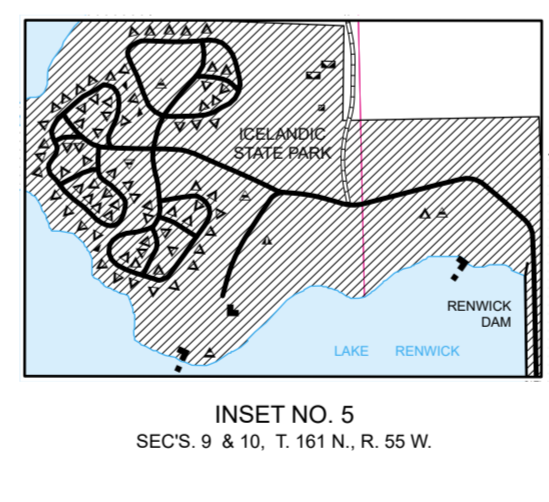
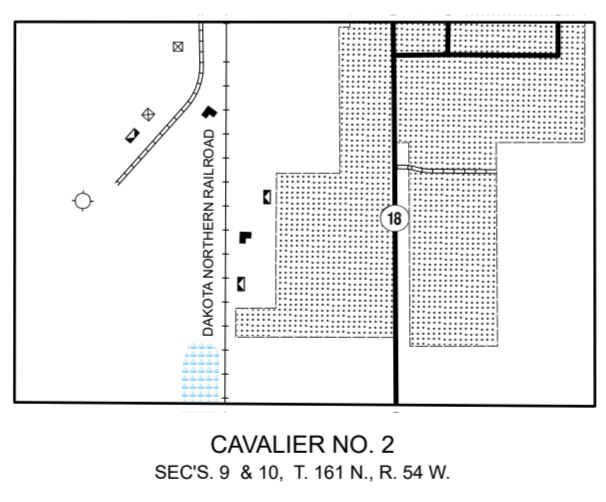
REVISION DATE AND CHANGE

03-16-2011 Changed 7.0 miles of CMC3432 to CMC5002 in Walsh Co.



NAME AND LOCATION OF ORGANIZED CIVIL TOWNSHIPS THOSE UNORGANIZED ARE SO NOTED

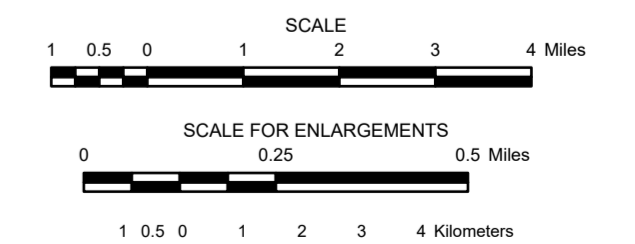
| | |
|---------------------------------|-------------------------------|
| T. 164 N.-R. 55 W. WALHALLA | T. 162 N.-R. 50 W. JOUETTE |
| T. 163 N.-R. 56 W. WALHALLA | T. 161 N.-R. 51 W. JOUETTE |
| T. 164 N.-R. 55 W. SAINT JOSEPH | T. 161 N.-R. 50 W. BEAULIEU |
| T. 164 N.-R. 55 W. SAINT JOSEPH | T. 161 N.-R. 56 W. BEAULIEU |
| T. 164 N.-R. 54 W. FELSON | T. 161 N.-R. 55 W. AKRA |
| T. 163 N.-R. 54 W. FELSON | T. 162 N.-R. 53 W. HAMILTON |
| T. 164 N.-R. 53 W. NECHE | T. 161 N.-R. 53 W. HAMILTON |
| T. 163 N.-R. 53 W. NECHE | T. 160 N.-R. 56 W. THINKVALLA |
| T. 163 N.-R. 52 W. NECHE | T. 160 N.-R. 55 W. PARK |
| T. 164 N.-R. 52 W. PEMBINA | T. 160 N.-R. 54 W. LODEMA |
| T. 164 N.-R. 51 W. PEMBINA | T. 160 N.-R. 53 W. ST. THOMAS |
| T. 163 N.-R. 52 W. PEMBINA | T. 159 N.-R. 53 W. ST. THOMAS |
| T. 163 N.-R. 51 W. PEMBINA | T. 160 N.-R. 52 W. MIDLAND |
| T. 162 N.-R. 51 W. PEMBINA | T. 159 N.-R. 52 W. MIDLAND |
| T. 162 N.-R. 50 W. PEMBINA | T. 159 N.-R. 51 W. MIDLAND |
| T. 162 N.-R. 49 W. PEMBINA | T. 159 N.-R. 50 W. MIDLAND |
| T. 162 N.-R. 48 W. PEMBINA | T. 159 N.-R. 49 W. MIDLAND |
| T. 162 N.-R. 47 W. PEMBINA | T. 159 N.-R. 48 W. MIDLAND |
| T. 162 N.-R. 46 W. PEMBINA | T. 159 N.-R. 47 W. MIDLAND |
| T. 162 N.-R. 45 W. PEMBINA | T. 159 N.-R. 46 W. MIDLAND |
| T. 162 N.-R. 44 W. PEMBINA | T. 159 N.-R. 45 W. MIDLAND |
| T. 162 N.-R. 43 W. PEMBINA | T. 159 N.-R. 44 W. MIDLAND |
| T. 162 N.-R. 42 W. PEMBINA | T. 159 N.-R. 43 W. MIDLAND |
| T. 162 N.-R. 41 W. PEMBINA | T. 159 N.-R. 42 W. MIDLAND |
| T. 162 N.-R. 40 W. PEMBINA | T. 159 N.-R. 41 W. MIDLAND |
| T. 162 N.-R. 39 W. PEMBINA | T. 159 N.-R. 40 W. MIDLAND |
| T. 162 N.-R. 38 W. PEMBINA | T. 159 N.-R. 39 W. MIDLAND |
| T. 162 N.-R. 37 W. PEMBINA | T. 159 N.-R. 38 W. MIDLAND |
| T. 162 N.-R. 36 W. PEMBINA | T. 159 N.-R. 37 W. MIDLAND |
| T. 162 N.-R. 35 W. PEMBINA | T. 159 N.-R. 36 W. MIDLAND |
| T. 162 N.-R. 34 W. PEMBINA | T. 159 N.-R. 35 W. MIDLAND |
| T. 162 N.-R. 33 W. PEMBINA | T. 159 N.-R. 34 W. MIDLAND |
| T. 162 N.-R. 32 W. PEMBINA | T. 159 N.-R. 33 W. MIDLAND |
| T. 162 N.-R. 31 W. PEMBINA | T. 159 N.-R. 32 W. MIDLAND |
| T. 162 N.-R. 30 W. PEMBINA | T. 159 N.-R. 31 W. MIDLAND |
| T. 162 N.-R. 29 W. PEMBINA | T. 159 N.-R. 30 W. MIDLAND |
| T. 162 N.-R. 28 W. PEMBINA | T. 159 N.-R. 29 W. MIDLAND |
| T. 162 N.-R. 27 W. PEMBINA | T. 159 N.-R. 28 W. MIDLAND |
| T. 162 N.-R. 26 W. PEMBINA | T. 159 N.-R. 27 W. MIDLAND |
| T. 162 N.-R. 25 W. PEMBINA | T. 159 N.-R. 26 W. MIDLAND |
| T. 162 N.-R. 24 W. PEMBINA | T. 159 N.-R. 25 W. MIDLAND |
| T. 162 N.-R. 23 W. PEMBINA | T. 159 N.-R. 24 W. MIDLAND |
| T. 162 N.-R. 22 W. PEMBINA | T. 159 N.-R. 23 W. MIDLAND |
| T. 162 N.-R. 21 W. PEMBINA | T. 159 N.-R. 22 W. MIDLAND |
| T. 162 N.-R. 20 W. PEMBINA | T. 159 N.-R. 21 W. MIDLAND |
| T. 162 N.-R. 19 W. PEMBINA | T. 159 N.-R. 20 W. MIDLAND |
| T. 162 N.-R. 18 W. PEMBINA | T. 159 N.-R. 19 W. MIDLAND |
| T. 162 N.-R. 17 W. PEMBINA | T. 159 N.-R. 18 W. MIDLAND |
| T. 162 N.-R. 16 W. PEMBINA | T. 159 N.-R. 17 W. MIDLAND |
| T. 162 N.-R. 15 W. PEMBINA | T. 159 N.-R. 16 W. MIDLAND |
| T. 162 N.-R. 14 W. PEMBINA | T. 159 N.-R. 15 W. MIDLAND |
| T. 162 N.-R. 13 W. PEMBINA | T. 159 N.-R. 14 W. MIDLAND |
| T. 162 N.-R. 12 W. PEMBINA | T. 159 N.-R. 13 W. MIDLAND |
| T. 162 N.-R. 11 W. PEMBINA | T. 159 N.-R. 12 W. MIDLAND |
| T. 162 N.-R. 10 W. PEMBINA | T. 159 N.-R. 11 W. MIDLAND |
| T. 162 N.-R. 9 W. PEMBINA | T. 159 N.-R. 10 W. MIDLAND |
| T. 162 N.-R. 8 W. PEMBINA | T. 159 N.-R. 9 W. MIDLAND |
| T. 162 N.-R. 7 W. PEMBINA | T. 159 N.-R. 8 W. MIDLAND |
| T. 162 N.-R. 6 W. PEMBINA | T. 159 N.-R. 7 W. MIDLAND |
| T. 162 N.-R. 5 W. PEMBINA | T. 159 N.-R. 6 W. MIDLAND |
| T. 162 N.-R. 4 W. PEMBINA | T. 159 N.-R. 5 W. MIDLAND |
| T. 162 N.-R. 3 W. PEMBINA | T. 159 N.-R. 4 W. MIDLAND |
| T. 162 N.-R. 2 W. PEMBINA | T. 159 N.-R. 3 W. MIDLAND |
| T. 162 N.-R. 1 W. PEMBINA | T. 159 N.-R. 2 W. MIDLAND |



GENERAL HIGHWAY MAP PEMBINA COUNTY NORTH DAKOTA

PREPARED BY THE
NORTH DAKOTA DEPARTMENT OF TRANSPORTATION
PLANNING AND ASSET MANAGEMENT DIVISION

IN COOPERATION WITH THE
U.S. DEPARTMENT OF TRANSPORTATION
FEDERAL HIGHWAY ADMINISTRATION



2021

BASED ON AERIAL PHOTOGRAPHY OF 1954
AERIAL INVENTORY OF 2021

UNIVERSAL TRANSVERSE MERCATOR ZONE 14
NORTH AMERICAN DATUM 83

Notice of Disclaimer
The North Dakota Department of Transportation (NDDOT) makes this map available on an "as is" basis as a public service. Under no circumstances does NDDOT warrant or certify the information to be free of errors or deficiencies of any kind. NDDOT specifically disclaims all warranties, express or implied, including but not limited to the warranties of merchantability and fitness for a particular purpose.