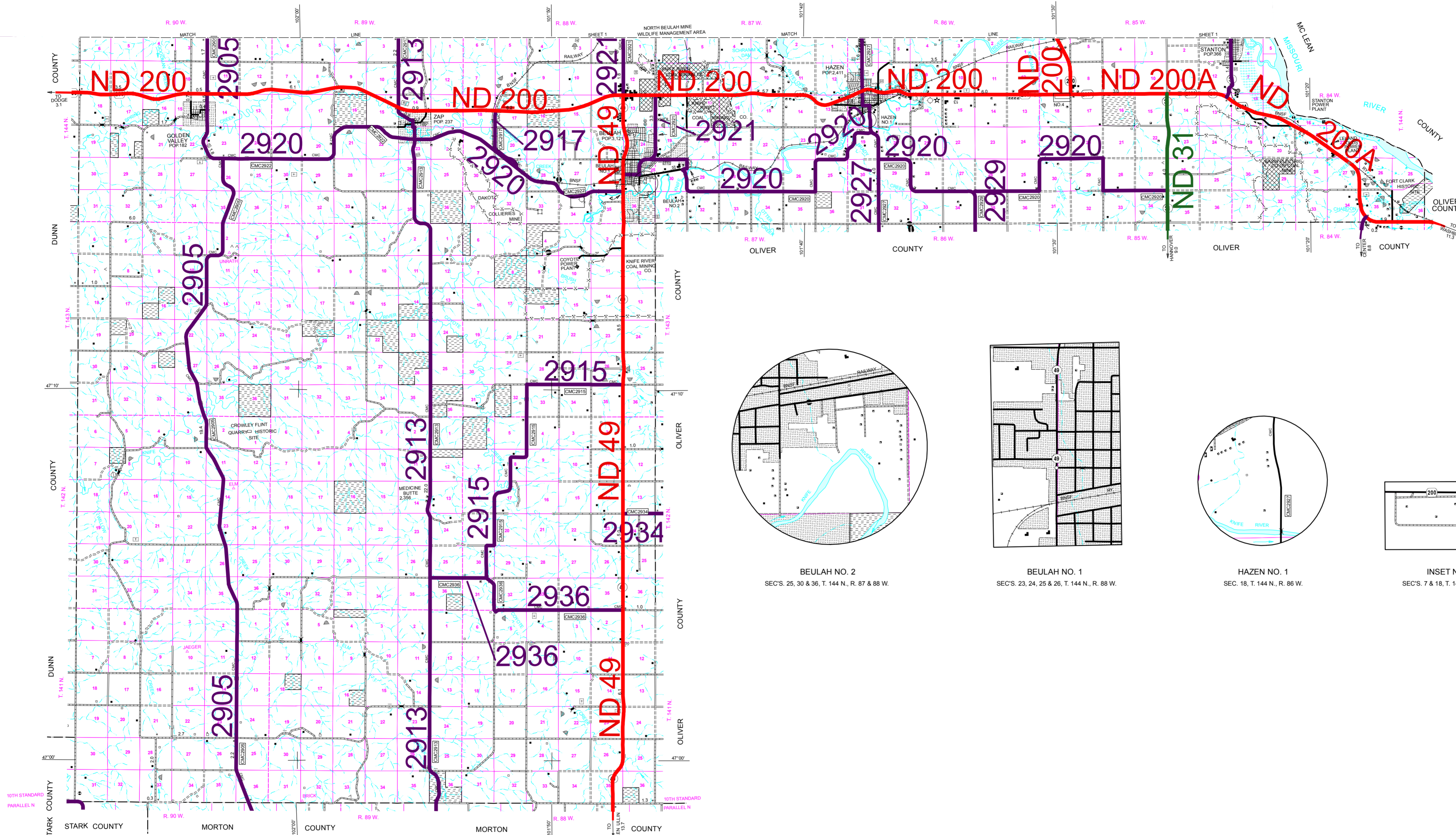
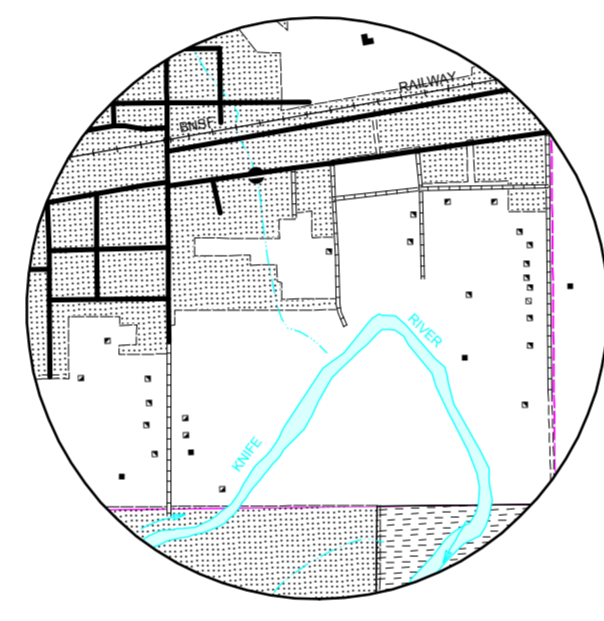


# 2007 FUNCTIONAL CLASSIFICATION



NAME AND LOCATION OF ORGANIZED CIVIL TOWNSHIPS THOSE UNORGANIZED ARE SO NOTED

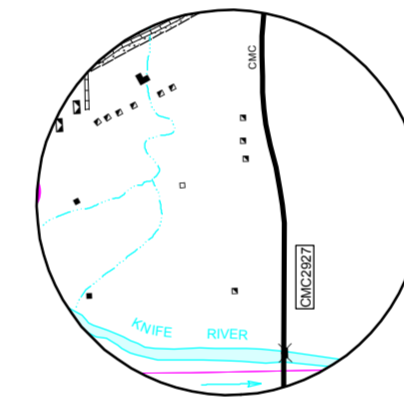
- T. 147 N. - R. 90 W. UNORGANIZED
- T. 147 N. - R. 89 W. UNORGANIZED
- T. 147 N. - R. 88 W. UNORGANIZED
- T. 147 N. - R. 87 W. UNORGANIZED
- T. 147 N. - R. 86 W. UNORGANIZED
- T. 147 N. - R. 85 W. UNORGANIZED
- T. 146 N. - R. 90 W. UNORGANIZED
- T. 146 N. - R. 89 W. UNORGANIZED
- T. 146 N. - R. 88 W. UNORGANIZED
- T. 146 N. - R. 87 W. UNORGANIZED
- T. 146 N. - R. 86 W. UNORGANIZED
- T. 146 N. - R. 85 W. UNORGANIZED
- T. 146 N. - R. 84 W. UNORGANIZED
- T. 145 N. - R. 90 W. UNORGANIZED
- T. 145 N. - R. 89 W. UNORGANIZED
- T. 145 N. - R. 88 W. UNORGANIZED
- T. 145 N. - R. 87 W. UNORGANIZED
- T. 145 N. - R. 86 W. UNORGANIZED
- T. 145 N. - R. 85 W. UNORGANIZED
- T. 145 N. - R. 84 W. UNORGANIZED
- T. 144 N. - R. 90 W. UNORGANIZED
- T. 144 N. - R. 89 W. UNORGANIZED
- T. 144 N. - R. 88 W. UNORGANIZED
- T. 144 N. - R. 87 W. UNORGANIZED
- T. 144 N. - R. 86 W. UNORGANIZED
- T. 144 N. - R. 85 W. UNORGANIZED
- T. 144 N. - R. 84 W. UNORGANIZED
- T. 143 N. - R. 90 W. UNORGANIZED
- T. 143 N. - R. 89 W. UNORGANIZED
- T. 143 N. - R. 88 W. UNORGANIZED
- T. 142 N. - R. 90 W. UNORGANIZED
- T. 142 N. - R. 89 W. UNORGANIZED
- T. 142 N. - R. 88 W. UNORGANIZED
- T. 141 N. - R. 90 W. UNORGANIZED
- T. 141 N. - R. 89 W. UNORGANIZED
- T. 141 N. - R. 88 W. UNORGANIZED



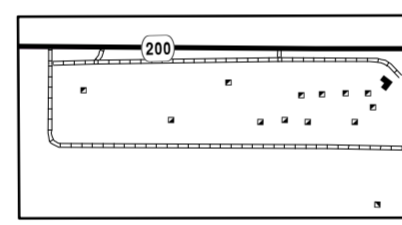
BEULAH NO. 2  
SECS. 25, 30 & 36, T. 144 N., R. 87 & 88 W.



BEULAH NO. 1  
SECS. 23, 24, 25 & 26, T. 144 N., R. 88 W.



HAZEN NO. 1  
SEC. 18, T. 144 N., R. 86 W.



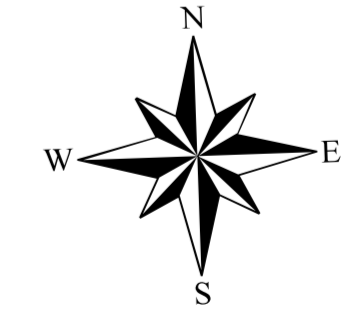
INSET NO. 4  
SECS. 7 & 18, T. 144 N., R. 85 W.

**LEGEND**

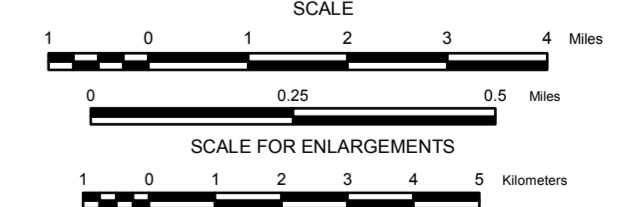
- INTERSTATE
- PRINCIPAL ARTERIAL
- MINOR ARTERIAL
- MAJOR COLLECTOR

**REVISION DATE AND CHANGE**

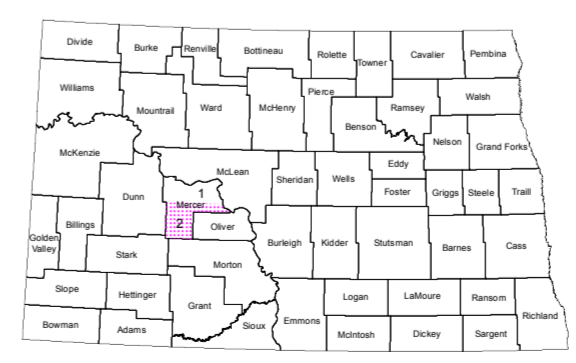
10-10-2013 Added CMC2917 with 2.1 miles



MERCER COUNTY



2007



STATE OF NORTH DAKOTA  
DIAGRAM OF COUNTIES

COPIES OF THIS MAP ARE AVAILABLE FOR PUBLIC USE AT A NOMINAL COST FROM:  
MAP SALES, N.D. DEPT. OF TRANSPORTATION, 608 E. BLVD. AVE., BISMARCK, N.D. 58505-0700

BASED ON AERIAL PHOTOGRAPHY OF 1958  
GROUND INVENTORY OF 2007  
AERIAL INVENTORY OF 2007

UNIVERSAL TRANSVERSE MERCATOR ZONE 14  
NORTH AMERICAN DATUM 83