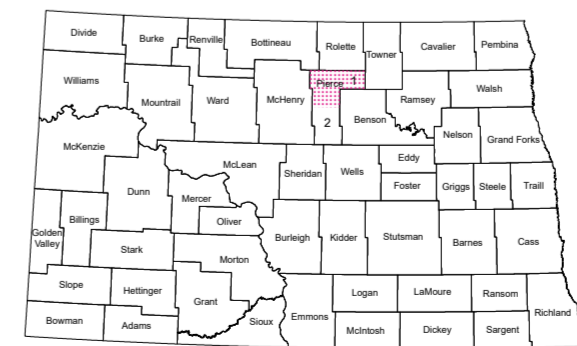
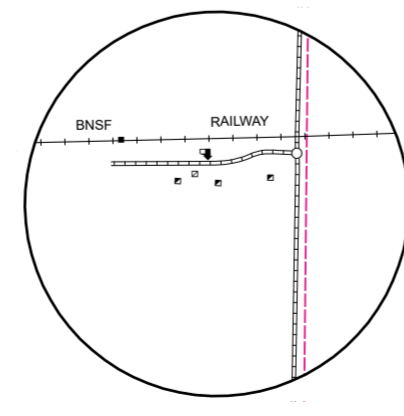
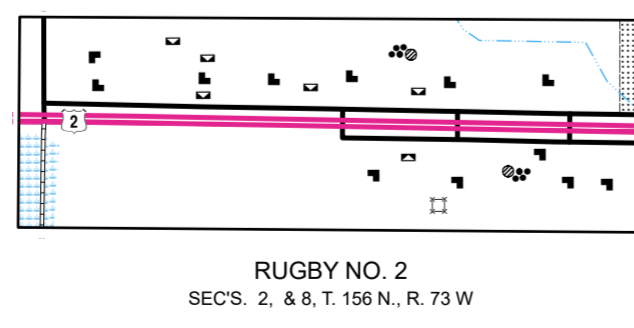
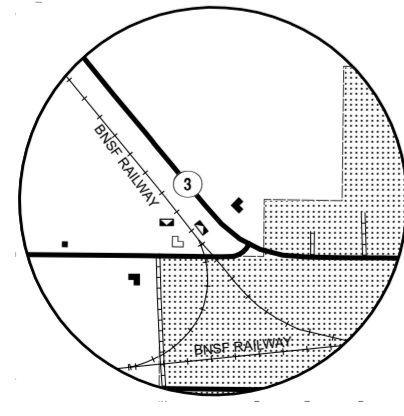
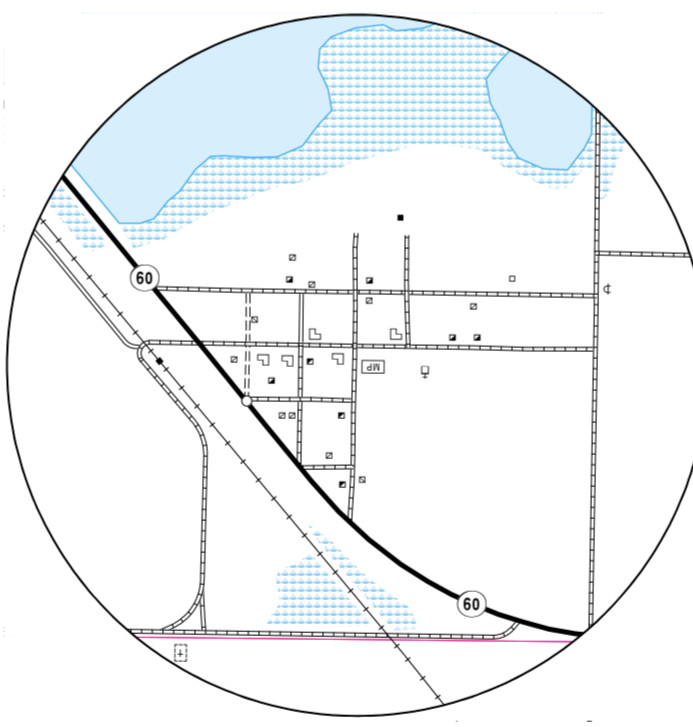


### GENERAL LEGEND

<b>ROADS AND ROADWAY FEATURES</b>	<b>FARM UNITS, DWELLINGS, ETC.</b>
PRIMITIVE ROAD	FARM UNIT (FARM UNITS SHOWN IN
UNIMPROVED ROAD	MUNICIPAL LIMITS INDICATE FARM
GRADED AND DRAINED ROAD	BUILDINGS FOR FARM USE
GRAVEL GRADED AND DRAINED ROAD	DWELLING OTHER THAN FARM
PAVED ROAD	ROWS OR GROUPS OF DWELLINGS
STREETS IN UNINCORPORATED AREAS	CLOSELY SPACED (FIGURE DENOTES
INTERCHANGE	NUMBER OF DWELLINGS)
COUNTY MAJOR COLLECTOR	SEASONAL OR SUMMER COLONY
ROUTE NUMBER	DWELLING
POINTS BETWEEN WHICH	HOTEL OR INN
DISTANCES ARE MEASURED	CHURCH
INTERSTATE NUMBERED HIGHWAY	CEMETERY
U.S. NUMBERED HIGHWAY	CHURCH WITH CEMETERY ADJACENT
STATE HIGHWAY SYSTEM	WELL
<b>BOUNDARIES</b>	<b>INDUSTRIAL</b>
COUNTY LINE	STORE OR SMALL BUSINESS
TOWNSHIP LINE	ESTABLISHMENT
CORPORATE LINE	GAS TANK
SECTION LINE	GROUP OF STORAGE TANKS
MATCH LINE BETWEEN ADJOINING	(OIL OR GAS)
SHEETS OF SAME COUNTY	PUMPING STATION (OIL OR GAS)
BOUNDARY TO MARK	GAUGING OR PUMPING STATION
ENLARGEMENT INSET	WAREHOUSE - GENERAL
<b>NATIONAL REFUGES</b>	GRAIN ELEVATOR
MONUMENT - SMALL HISTORIC SITE	STOCK YARD - LOADING PEN
WILDLIFE MANAGEMENT AREA	OR CORRAL
WATERFOUL PRODUCTION AREA	GRAVEL PIT
STATE SCHOOL LAND	WIND TURBINE
<b>DRAINAGE</b>	<b>CONSERVATION AND RECREATION</b>
INTERMITTENT STREAM (NARROW)	PICNIC GROUND
NARROW STREAM	PLAYGROUND, BALL FIELD, ETC.
WIDE STREAM	BATHING BEACH OR SWIMMING POOL
WIDE STREAM WITH DAM	CAMP SITE, NO PERMANENCE
LAKE, RESERVOIR, OR POND	(TENTS OR TRAILER PARKING)
LAKE, RESERVOIR, OR POND	CAMP OR LODGE
WITH DAM	(PERMANENT SITE WITH BUILDINGS)
MARSH OR SWAMP LAND	SMALL PARK (SP-STATE, CP-COUNTY,
<b>RAILROADS</b>	MP-MUNICIPAL, WP-WAYSIDE PARK)
RAILROAD (ANY NUMBER OF TRACKS	REST AREA
USED BY A SINGLE OPERATING CO.)	GOLF GROUND OR COUNTRY CLUB
RAILROAD STATION	FAIR GROUND, RACE COURSE, SPEEDWAY
RAILROAD GRADE CROSSING	RIFLE CLUB
RAILROAD ABOVE	<b>PUBLIC SERVICE FACILITIES</b>
RAILROAD BELOW	HIGHWAY GARAGE
RAILROAD BRIDGE	GARAGE OR RUBBISH DUMP
<b>STRUCTURES</b>	SEWAGE DISPOSAL PLANT
HIGHWAY BRIDGE, GENERAL	AUTOMOBILE GRAVEYARD
HIGHWAY GRADE SEPARATION	WATER SUPPLY STAND PIPE OR TANK
DAM WITH ROAD	POWER SUBSTATION
MINOR DRAINAGE STRUCTURE	COMMUNICATION TOWER
<b>CITY AND VILLAGE CENTERS</b>	<b>EDUCATIONAL AND CORRECTIONAL</b>
COUNTY SEAT	INSTITUTIONS
OTHER CITIES AND VILLAGES	SCHOOLHOUSE
INCORPORATED CITY OR VILLAGE	TOWNHALL, GRANGE, OR
(GENERALIZED)	COMMUNITY HALL
<b>AIRPORTS</b>	MUSEUM - GENERAL
AIRFIELD, LIMITED FACILITIES	<b>NAVIGATION</b>
LANDING AREA OR STRIP	DOCK, PIER, OR LANDING
	<b>MISCELLANEOUS</b>
	TRIANGULATION STATION
	DOT TO INDICATE LOCATION OF
	ANY CULTURAL FEATURE
	SHOWN OUT OF POSITION
	ALL VACANT CULTURE INDICATED
	BY OPEN SYMBOL
	LATITUDE AND LONGITUDE



# GENERAL HIGHWAY MAP PIERCE COUNTY NORTH DAKOTA

PREPARED BY THE  
NORTH DAKOTA DEPARTMENT OF TRANSPORTATION  
PLANNING AND ASSET MANAGEMENT DIVISION

IN COOPERATION WITH THE  
U.S. DEPARTMENT OF TRANSPORTATION  
FEDERAL HIGHWAY ADMINISTRATION

SCALE  
1 0.5 0 1 2 3 4 Miles

SCALE FOR ENLARGEMENTS  
0 0.25 0.5 Miles

2021

BASED ON AERIAL PHOTOGRAPHY OF 1994 UNIVERSAL TRANSVERSE MERCATOR ZONE 14  
AERIAL INVENTORY OF 2021 NORTH AMERICAN DATUM 83

**Notice of Disclaimer**  
The North Dakota Department of Transportation (NDOT) makes this map available on an "as is" basis as a public service. Under no circumstances does NDOT warrant or certify the information to be free of errors or deficiencies of any kind. NDOT specifically disclaims all warranties, express or implied, including but not limited to the warranties of merchantability and fitness for a particular purpose.