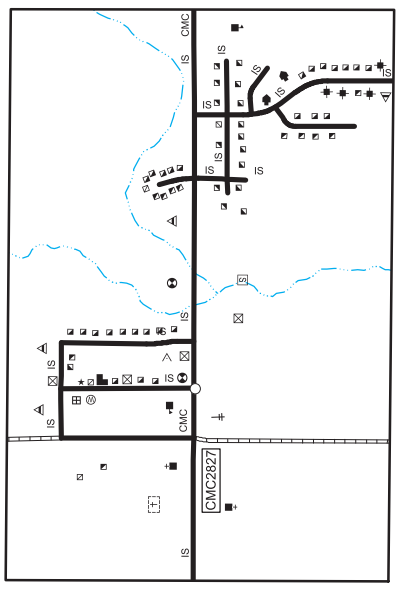
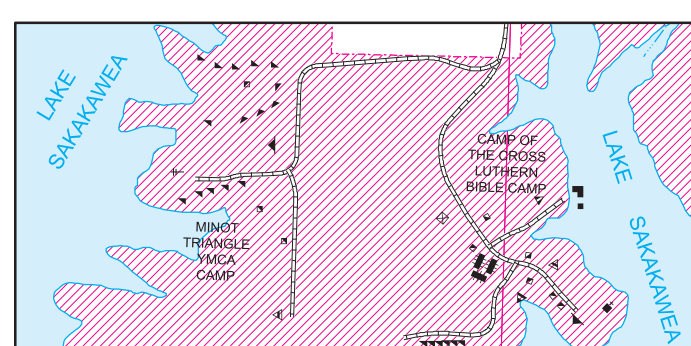


GENERAL LEGEND

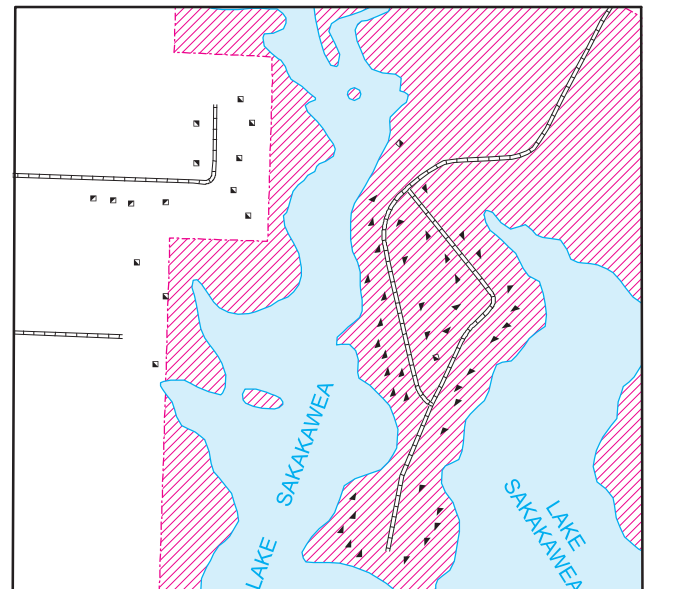
- ROADS AND ROADWAY FEATURES**
- PRIMITIVE ROAD
- UNIMPROVED ROAD
- GRAVEL AND DRAINED ROAD
- GRAVEL GRADED AND DRAINED ROAD
- PAVED ROAD
- STREETS IN UNINCORPORATED AREAS
- INDIAN SERVICE ROAD
- COUNTY MAJOR COLLECTOR
- ROUTE NUMBER
- POINTS BETWEEN WHICH DISTANCES ARE MEASURED
- INTERSTATE NUMBERED HIGHWAY
- U.S. NUMBERED HIGHWAY
- STATE HIGHWAY SYSTEM
- STRUCTURES**
- HIGHWAY BRIDGE, GENERAL
- HIGHWAY GRADE SEPARATION
- DAM WITH ROAD
- MINOR DRAINAGE STRUCTURE
- CONCRETE FORD OR DIP
- DRAINAGE**
- INTERMITTENT STREAM (NARROW)
- NARROW STREAM
- WIDE STREAM
- WIDE STREAM WITH DAM
- LAKE, RESERVOIR, OR POND
- LAKE, RESERVOIR, OR POND WITH DAM
- MARSH OR SWAMP LAND
- DRAINAGE DITCH
- NAVIGATION**
- DOCK, PIER, OR LANDING
- RAILROADS**
- RAILROAD (ANY NUMBER OF TRACKS USED BY A SINGLE OPERATING CO.)
- RAILROAD STATION
- RAILROAD BELOW
- RAILROAD BRIDGE
- BOUNDARIES**
- COUNTY LINE
- TOWNSHIP LINE
- CORPORATE LINE
- SECTION LINE
- MATCH LINE BETWEEN ADJOINING SHEETS OF SAME COUNTY
- BOUNDARY TO MARY ENLARGEMENT INSET
- NATIONAL REFUGES
- MONUMENT - SMALL, HISTORIC SITE
- WILDLIFE MANAGEMENT AREA
- WATERFOWL PRODUCTION AREA
- STATE PARKS
- STATE SCHOOL LAND
- NATIONAL GRASSLANDS
- RESERVOIR BOUNDARY (TAKING LINE)
- NATIONAL PARKS AND OTHER RESERVATIONS
- AIRPORTS**
- AIRFIELD, LIMITED FACILITIES
- LANDING AREA OR STRIP
- AIRWAY LIGHT BEACON, GENERAL
- MISCELLANEOUS**
- TRIANGULATION STATION
- DOT TO INDICATE LOCATION OF ANY CULTURAL FEATURE SHOWN OUT OF POSITION
- ALL VACANT CULTURE INDICATED BY OPEN SYMBOL
- LATITUDE AND LONGITUDE
- EDUCATIONAL AND CORRECTIONAL INSTITUTIONS**
- SCHOOLHOUSE
- TOWN HALL, GRANGE, OR COMMUNITY HALL
- FARM UNITS, DWELLINGS, ETC.**
- FARM UNIT (FARM UNITS SHOWN IN MUNICIPAL LIMITS INDICATE FARM BUILDINGS FOR FARM USE)
- DWELLING OTHER THAN FARM
- ROWS OR GROUPS OF DWELLINGS
- CLOSELY SPACED (FIGURE DENOTES NUMBER OF DWELLINGS)
- BARRACKS, OR DORMATORIES FOR STUDENTS, WORKERS, MIGRANTS, ETC.
- SEASONAL OR SUMMER COLONY DWELLING
- SEASONAL DWELLINGS CLOSELY SPACED
- HOTEL OR INN
- CHURCH
- CEMETERY
- CHURCH WITH CEMETERY ADJACENT
- WELL
- TENANT HOUSE
- PUBLIC SERVICE FACILITIES**
- POST OFFICE
- HIGHWAY GARAGE
- FIRE ENGINE HOUSE
- GARAGE OR RUBBISH DUMP
- SEWAGE DISPOSAL PLANT
- SANITARY FILL
- AUTOMOBILE GRAVEYARD
- SCRAP METAL
- WATER SUPPLY STAND PIPE OR TANK
- POWER PLANT
- POWER SUBSTATION
- BOOSTER STATION
- COMMUNICATION TOWER
- POLICE STATION
- NATIONAL PARK GARAGE
- MUNICIPAL BUILDINGS
- INDUSTRIAL**
- STORE OR SMALL BUSINESS ESTABLISHMENT
- FACTORY OR INDUSTRIAL PLANT
- GAS TANK
- GROUP OF STORAGE TANKS (OIL OR GAS)
- PUMPING STATION (OIL OR GAS)
- Gauging or Pumping Station
- WAREHOUSE - GENERAL
- GRAN ELEVATOR
- STOCK YARD - LOADING PEN OR CORRAL
- GRAVEL PIT
- MINE - SHAFT OR DRIFT (ANY KIND)
- CONSERVATION AND RECREATION**
- PICNIC GROUND
- PLAYGROUND, BALL FIELD, ETC.
- SCENIC SITE
- CAMP SITE, NO PERMANENCE (TENTS OR TRAILER PARKING)
- TOURIST COURT, OR MOTEL
- CAMP OR LODGE (PERMANENT SITE WITH BUILDINGS)
- REST AREA
- SMALL PARK (SP-STATE, CP-COUNTY, MP-MUNICIPAL, WP-WAYSIDE PARK)
- GOLF COURSE OR COUNTRY CLUB
- AMUSEMENT PARK OR HALL
- FAIR GROUND, RACE COURSE, SPEEDWAY
- GUIDE HOUSE OR GATE HOUSE
- FISH HATCHERY
- RIFLE CLUB
- DRIVE-IN THEATER
- CITY AND VILLAGE CENTERS**
- COUNTY SEAT
- OTHER CITIES AND VILLAGES
- INCORPORATED CITY OR VILLAGE (GENERALIZED)
- NATURAL FEATURES**
- PROMINENT ELEVATION - WITH NAME



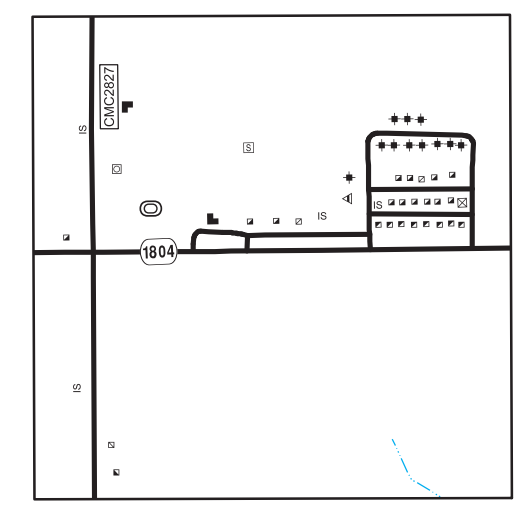
WHITE SHIELD
SECS. 1, 2, 11, & 12, T. 148 N., R. 88 W.



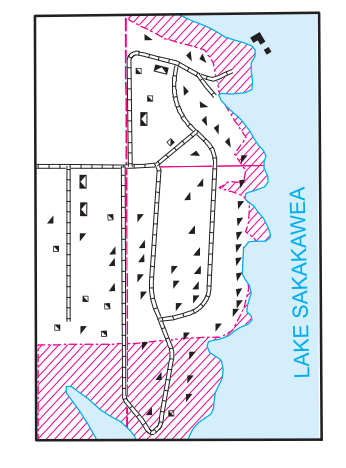
INSET NO. 1
SECS. 31, & 32, T. 148 N., R. 85 W.



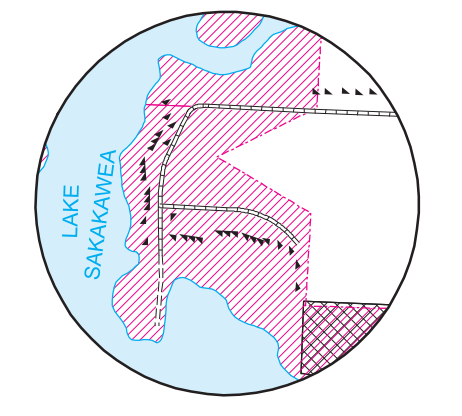
INSET NO. 2
SECS. 34, & 35, T. 148 N., R. 85 W.



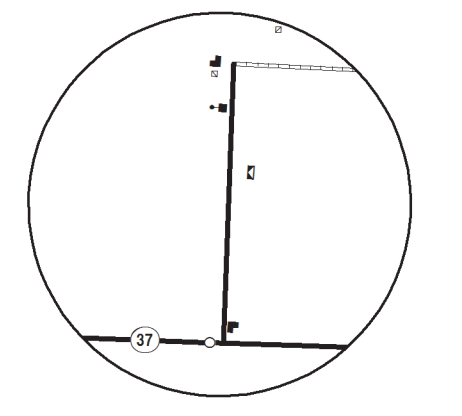
INSET NO. 13
SECS. 11, 12, & 13, T. 148 N., R. 88 W.



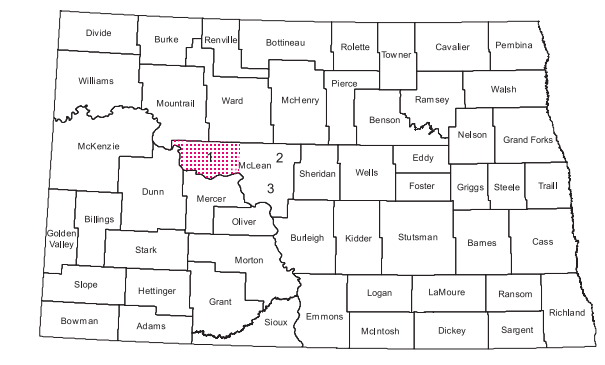
INSET NO. 14
SECS. 30, & 31, T. 148 N., R. 84 W.
SECS. 25, & 36 T. 148 N., R. 85 W.



INSET NO. 10
SECS. 4, & 9, T. 149 N., R. 90 W.



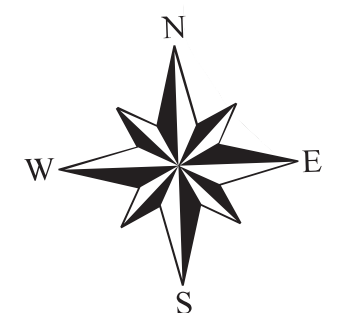
ROSEGLENN
SECS. 5, & 8, T. 149 N., R. 87 W.



STATE OF NORTH DAKOTA
DIAGRAM OF COUNTIES

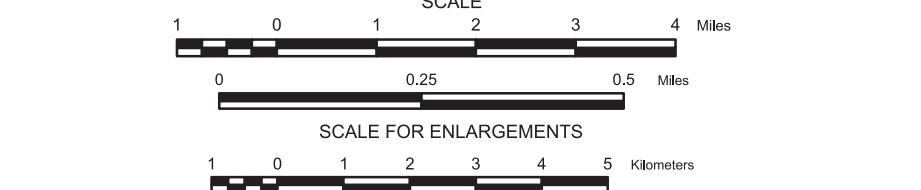
COPIES OF THIS MAP ARE AVAILABLE FOR PUBLIC USE AT A NOMINAL COST FROM:
MAP SALES, N.D. DEPT. OF TRANSPORTATION, 608 E. BLVD. AVE., BISMARCK, N.D. 58505-0700

Notice of Disclaimer
The North Dakota Department of Transportation (NDDOT) makes this map available on an "as is" basis as a public service. Under no circumstances does NDDOT warrant or certify the information to be free of errors or deficiencies of any kind. NDDOT specifically disclaims all warranties, express or implied, including but not limited to the warranties of merchantability and fitness for a particular purpose.



**GENERAL HIGHWAY MAP
MCLEAN COUNTY
NORTH DAKOTA**

PREPARED BY THE
NORTH DAKOTA DEPARTMENT OF TRANSPORTATION
PLANNING / ASSET MANAGEMENT DIVISION
IN COOPERATION WITH THE
U.S. DEPARTMENT OF TRANSPORTATION
FEDERAL HIGHWAY ADMINISTRATION



2013

BASED ON AERIAL PHOTOGRAPHY OF 1954
GROUND INVENTORY OF 2013
AERIAL INVENTORY OF 2013

UNIVERSAL TRANSVERSE MERCATOR ZONE 14
NORTH AMERICAN DATUM 83