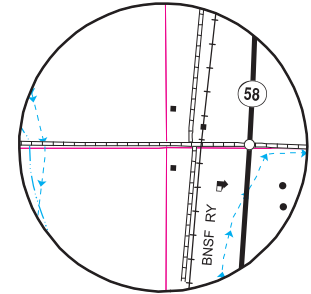
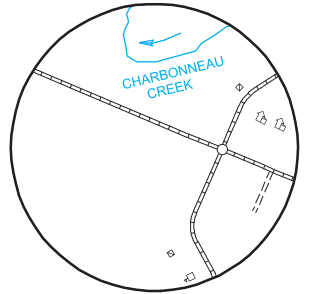


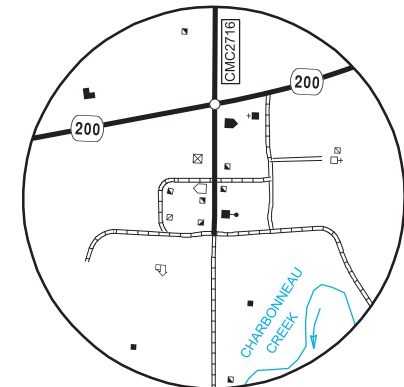
INSET NO. 6
SEC. 19, & 20, T. 151 N., R. 104 W.



DORE
SEC'S. 5, 6, 7, & 8, T. 151 N., R. 104 W.

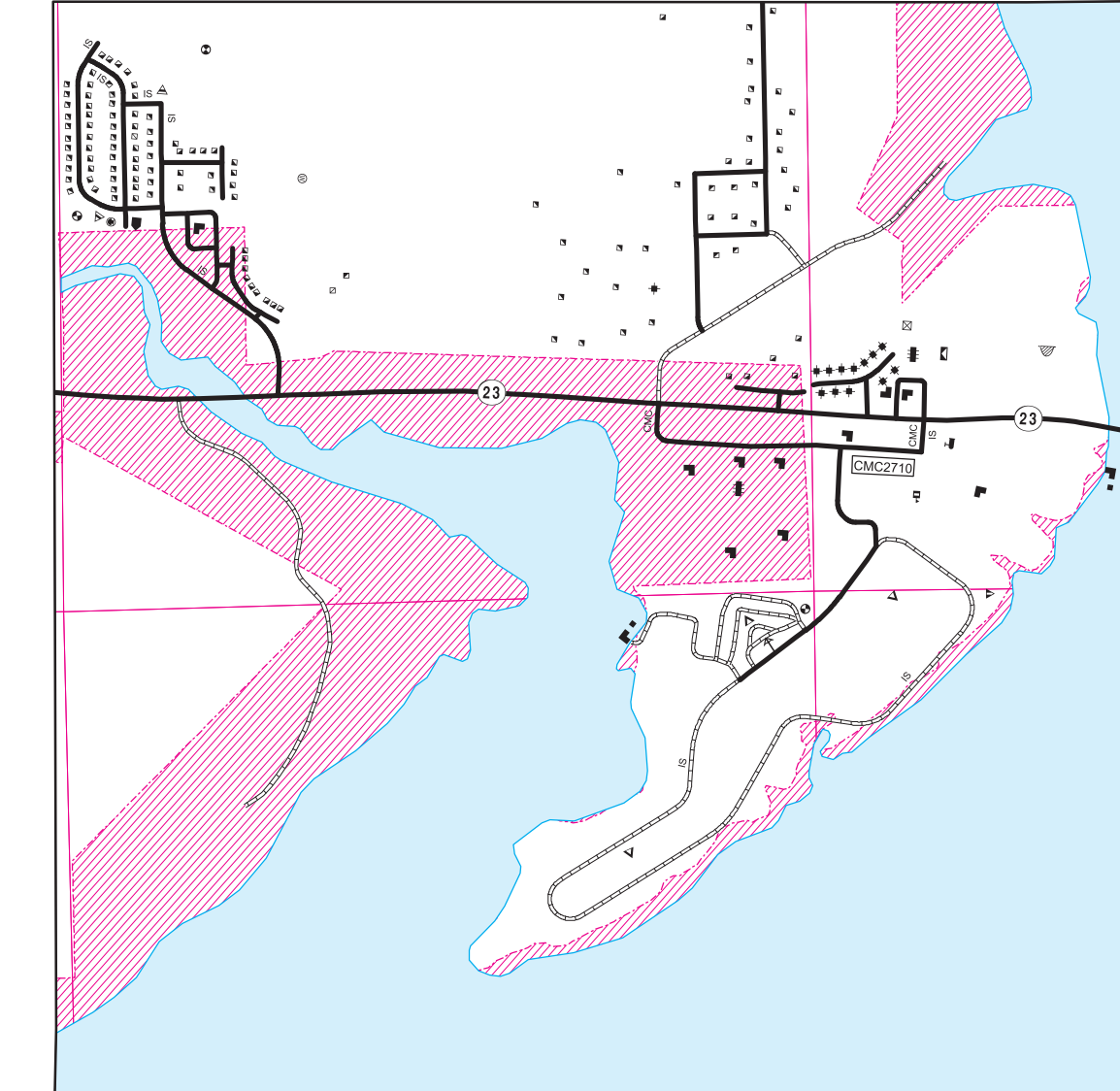
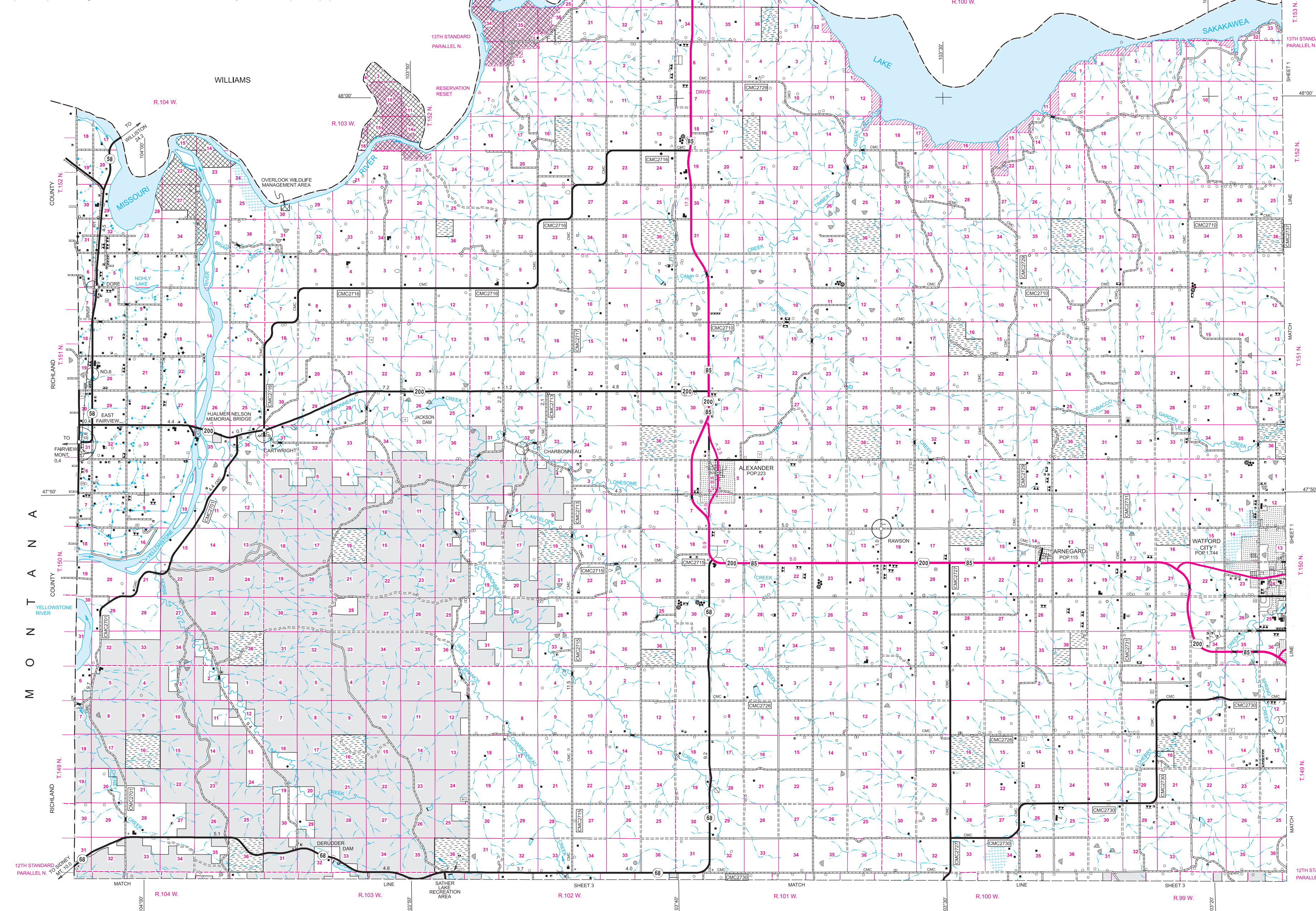


CHARBONNEAU
SEC. 32, T. 151 N., R. 102 W.

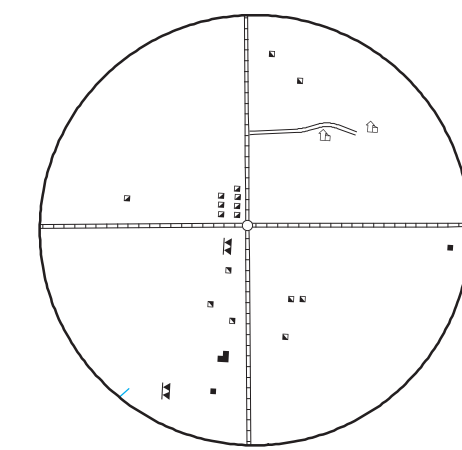


CARTWRIGHT
SEC. 36, T. 151 N., R. 104 W.
SEC. 31, T. 151 N., R. 103 W.

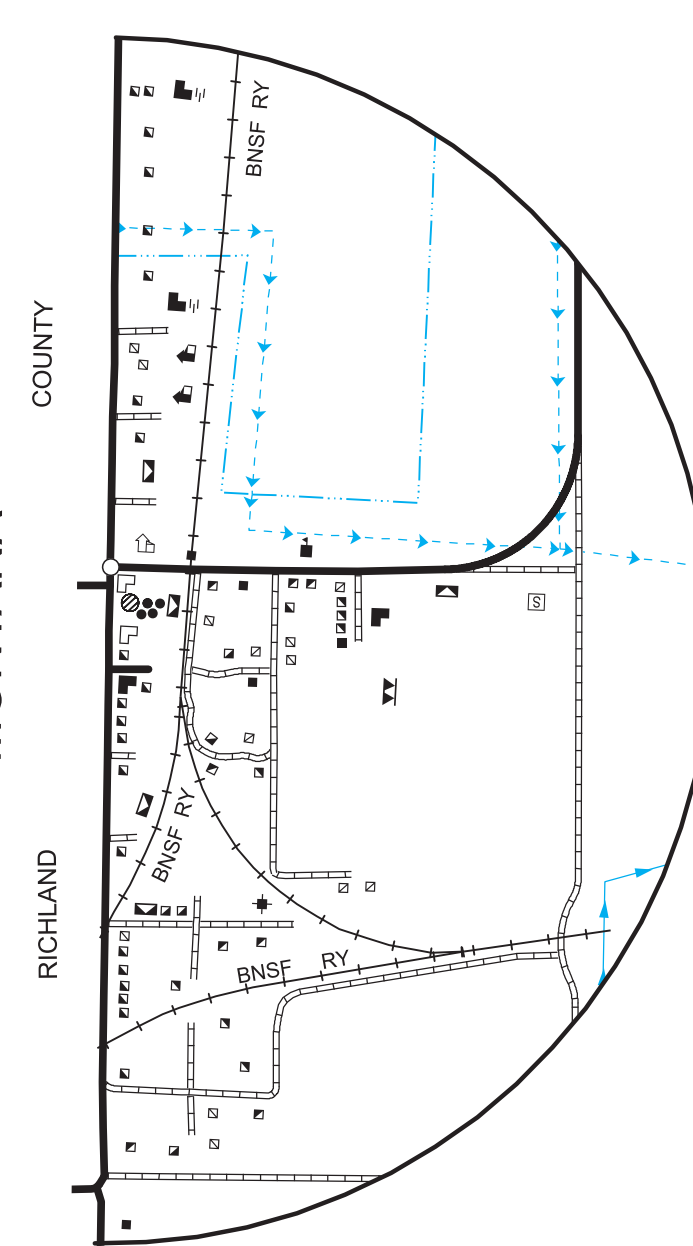
Notice of Disclaimer
The North Dakota Department of Transportation (NDDOT) makes this map available on an "as is" basis as a public service. Under no circumstances does NDDOT warrant or certify the information to be free of errors or deficiencies of any kind. NDDOT specifically disclaims all warranties, express or implied, including but not limited to the warranties of merchantability and fitness for a particular purpose.



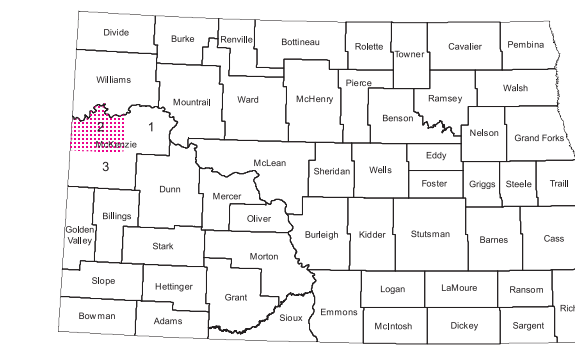
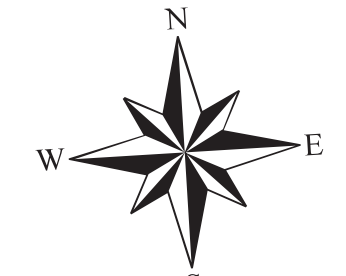
FOUR BEARS
SEC'S. 15, 16, 21, & 22, T. 152 N., R. 93 W.
(INSET LOCATED ON SHEET 1 OF 3)



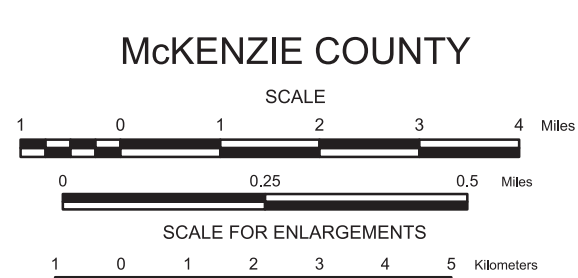
RAWSON
SEC'S. 12 & 13, T. 150 N., R. 101 W.
SEC'S. 7 & 18, T. 150 N., R. 100 W.



EAST FAIRVIEW
SEC'S. 31 & 32, T. 151 N., R. 104 W.
SEC. 6, T. 150 N., R. 103 W.



STATE OF NORTH DAKOTA
DIAGRAM OF COUNTIES



MCKENZIE COUNTY

2013

BASED ON AERIAL PHOTOGRAPHY OF 1958
GROUND INVENTORY OF 2013
AERIAL INVENTORY OF 2013
UNIVERSAL TRANSVERSE MERCATOR ZONE 14
NORTH AMERICAN DATUM 83