



MEMORIAL HIGHWAY CONSTRUCTION NEWSLETTER

Supporting Local - Keeping Safe - Staying Informed

21st Street Open, 46th Avenue Closure

There's some good news for drivers: 21st Street SE is officially open to traffic!

Crews are preparing for the next major phase of the Memorial Highway project. Beginning Tuesday morning, the intersection at 46th Avenue SE will be fully closed to give crews the space needed to complete critical improvements.

Originally, traffic was reduced to two lanes through the intersection, but that setup did not allow enough room to safely finish the work. By closing the intersection now, contractors can complete storm sewer, water main, aggregate, and paving in one continuous effort.

The intersection is expected to remain closed until at least the week of September 22.

Business Access Update:

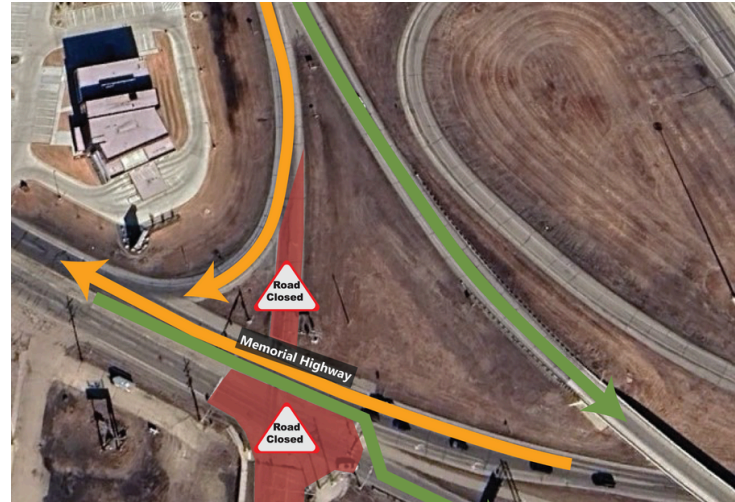
Due to approaches being temporarily moved or closed, mainly in the area near 43rd Avenue, access to some businesses has been shifted to the back of their property for the time being.



Reach us at **701-667-1033** or
scan the QR code to email us.

<https://bit.ly/MemorialHighwayContactForm>

AUGUST 25, 2025



What to expect during the closure:

- Traffic on Memorial Highway will be reduced to head-to-head traffic on the north side of the roadway.
- From the south exit ramp, take the flyover bridge into Bismarck or turn right onto Memorial Highway. Drivers will not be able to cross over to 46th Avenue or make a left turn back toward the I-94 Business Loop.
- Traffic on 46th Avenue Southeast will not be able to directly access Memorial Highway. Drivers will need to use alternate routes such as 21st Street Southeast or the McKenzie Interchange.



Businesses Are Open - Please Support Local!

Access may look different during construction, but all businesses remain open.

Thank you for shopping local!



Stay Connected



Project Info: dot.nd.gov/memorialhwy



Traffic Updates: travel.dot.nd.gov or dial 511



City Updates: cityofmandan.com/mhp