

# I-94 INTERCHANGE (EXIT 161) RECONSTRUCTION PROJECT

ISSUE 18: SEPTEMBER 2025



## NEW BRIDGE IN USE AS EAST WORK BEGINS

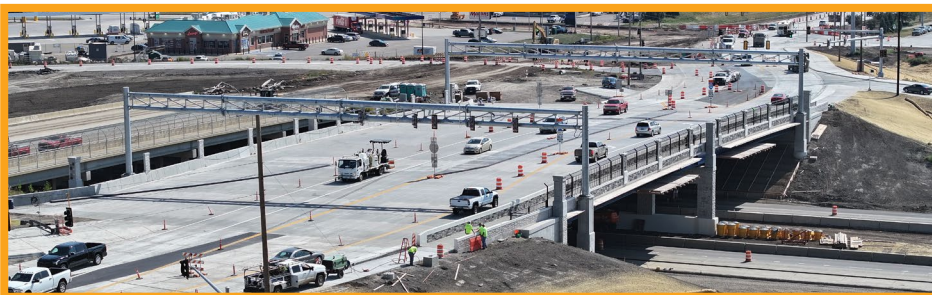
The new bridge is open to traffic as crews begin work on the east side, including ramp construction, roadway realignments, and demolition of the old bridge.



## WHAT TO EXPECT THROUGH OCTOBER

The current traffic pattern will remain in place with minor adjustments as needed, while crews continue work on the interchange's east side. A more significant traffic shift is expected near the end of October, moving drivers closer to the final configuration of the new Single Point Urban Interchange.

- **Centennial Road/Bismarck Expressway:** Reduced to one lane in each direction across the new bridge from Trenton Drive to Miriam Avenue. Pedestrians can access the new bridge sidewalks.
- **Miriam Avenue:** A portion of Miriam Avenue is closed east of Centennial Road/Bismarck Expressway. Detour provided via Revere and Hancock Drive.
- **Westbound I-94:** All Centennial Road/Bismarck Expressway traffic enter using new NW on-ramp. Exit using the temporary NE off-ramp. Reduced to one lane.
- **Eastbound I-94:** Exit using new SW off-ramp (loop off-ramp is now closed for construction). Enter using existing SE on-ramp. Reduced to one lane.



The old bridge is completely closed to traffic, with barricades in place. Demolition is scheduled for late September or early October.

## UPCOMING WORK ON INTERCHANGE'S EAST SIDE



- Construction of I-94 ramps and permanent loop ramps connecting to the new bridge
- Realignment of Centennial Rd/Bismarck Expressway northbound lanes at the east intersections of Miriam Ave. and Trenton Dr.
- Installation of storm drainage systems, traffic signals, and street lighting
- Removal of old bridge, old roadways, and temporary ramps

## MORE QUESTIONS?

Stay updated through this project's dedicated [webpage](#) or send your questions to our Bismarck District Office.

Dean Schloss, NDDOT Bismarck Assistant District Engineer | [dschloss@nd.gov](mailto:dschloss@nd.gov)

NORTH  
**Dakota** | Transportation  
Be Legendary.