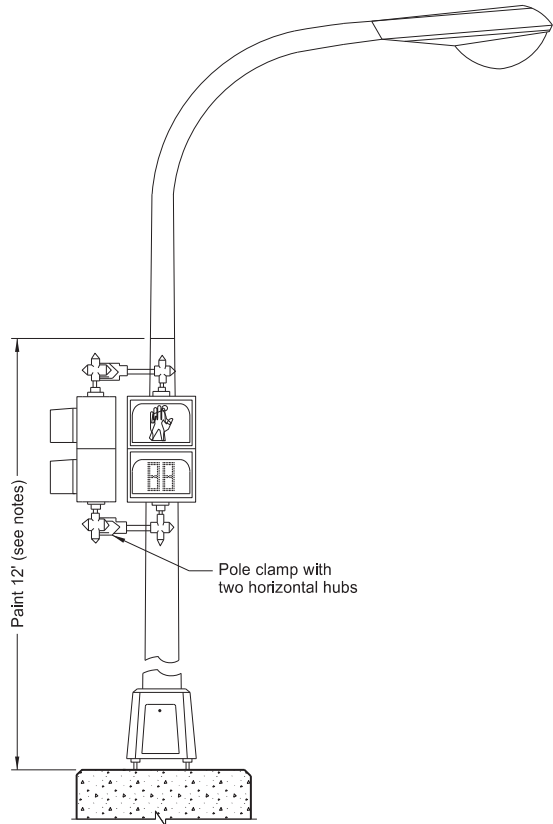


TRAFFIC SIGNAL HEAD MOUNTING

D-772-4



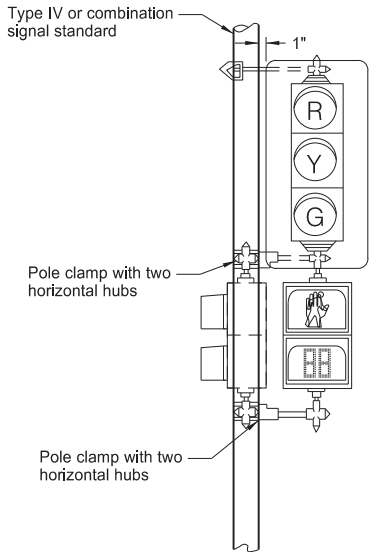
Light Standard Mounted  
Pedestrian Signal Head (A)



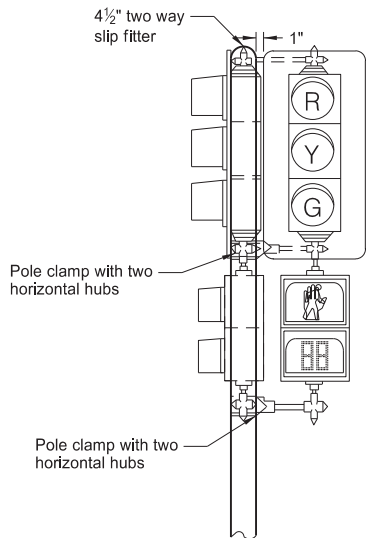
Pedestrian countdown timer  
(A) See plans for the appropriate orientation  
and type of pedestrian signal head to use.



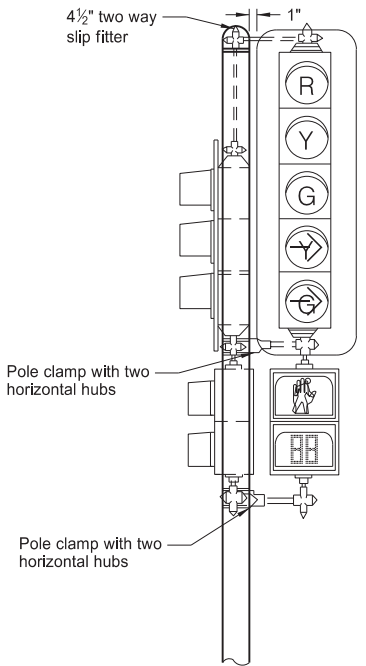
Type II  
Pedestal Mounted - Pedestrian (A)



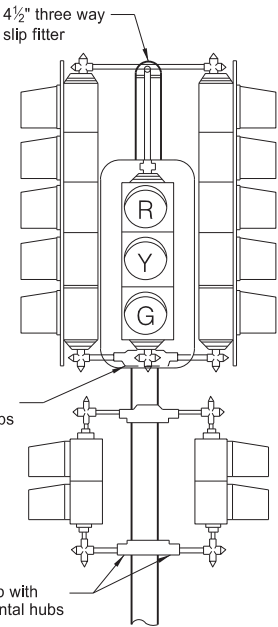
Type IV  
Post Mounted - Vehicular  
Post Mounted - Pedestrian (A)



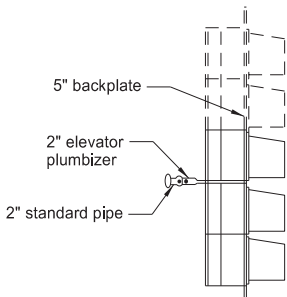
Type V  
Post Mounted - Vehicular  
Post Mounted - Pedestrian (A)



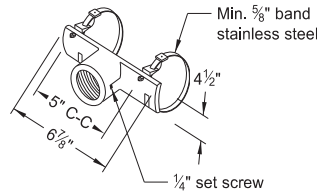
Type VI  
Post Mounted - Vehicular  
Post Mounted - Pedestrian (A)



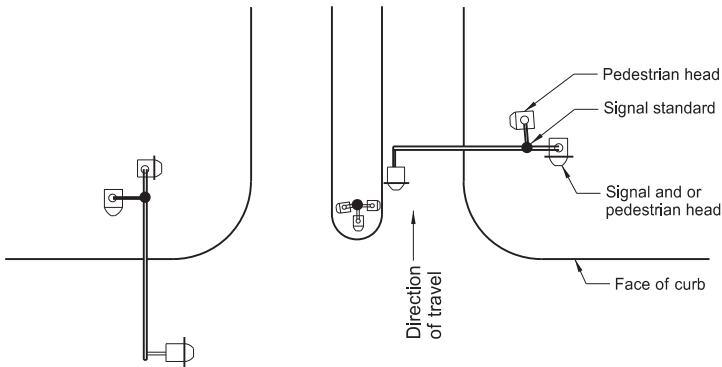
Type VII  
Post Mounted - Vehicular  
Post Mounted - Pedestrian (A)



Mid-Span Mounted and  
Mast Arm Rigid Mounted  
Signal Heads

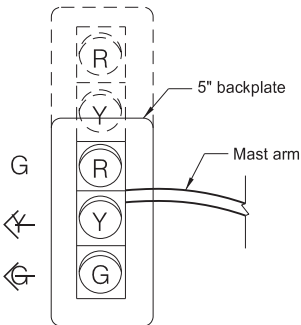


Mast Arm Signal  
Head Bracket

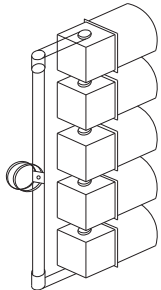


Plan Layout  
(typical)

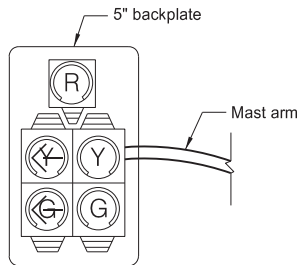
Note: Place signal heads behind the face of the curb.



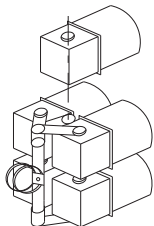
Front View



Isometric View



Front View



Isometric View

End Mounted and Mast Arm Rigid Mounted  
Signal Heads

- Notes:
- Reinforcing Plates: Install reinforcing plates where mounting hardware attaches to signal heads when using polycarbonate signal heads. Where a plumbizer is used, place reinforcing plates on each side of the plumbizer.
- Clearance: Place the bottom of post or pedestal mounted vehicular signal heads a minimum of 10 ft. and pedestrian signal heads a minimum of 8 ft. above the ground line or sidewalk.
- Signal Heads: See traffic signal layout for correct mounting position, numbers, size, and arrangement of lenses.
- Pole Clamps: A pole plate with suitable banding material, as approved by the Engineer, is allowed in place of pole clamps. Where traffic signal heads and pedestrian signal heads are mounted one above the other, one pole clamp assembly is allowed.
- Paint: Paint signal housing yellow and backplates dull black. Paint pole clamps and signal head mounting hardware the same color as the signal standard shaft.
- When pedestrian heads are light standard mounted, paint the lower 12 ft. the same color as the other traffic signal standards.
- Mounting Details: All signal heads shown viewed from direction of travel.

NORTH DAKOTA DEPARTMENT OF TRANSPORTATION	
11-14-13	
REVISIONS	
DATE	CHANGE
07-08-14	Added reinforcing plate note
10-17-17	Updated to active voice
08-28-19	New Design Engineer PE Stamp
08-20-25	Added physical stamp & signature



08/20/25