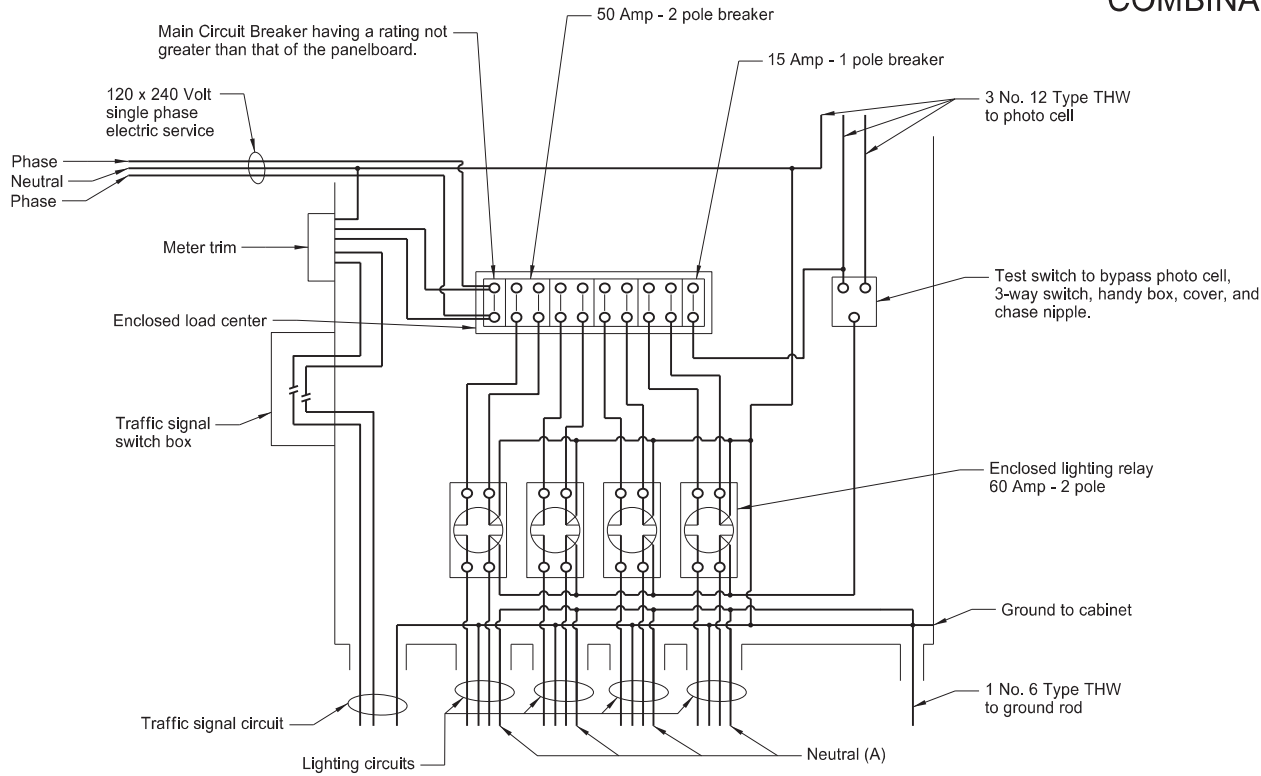
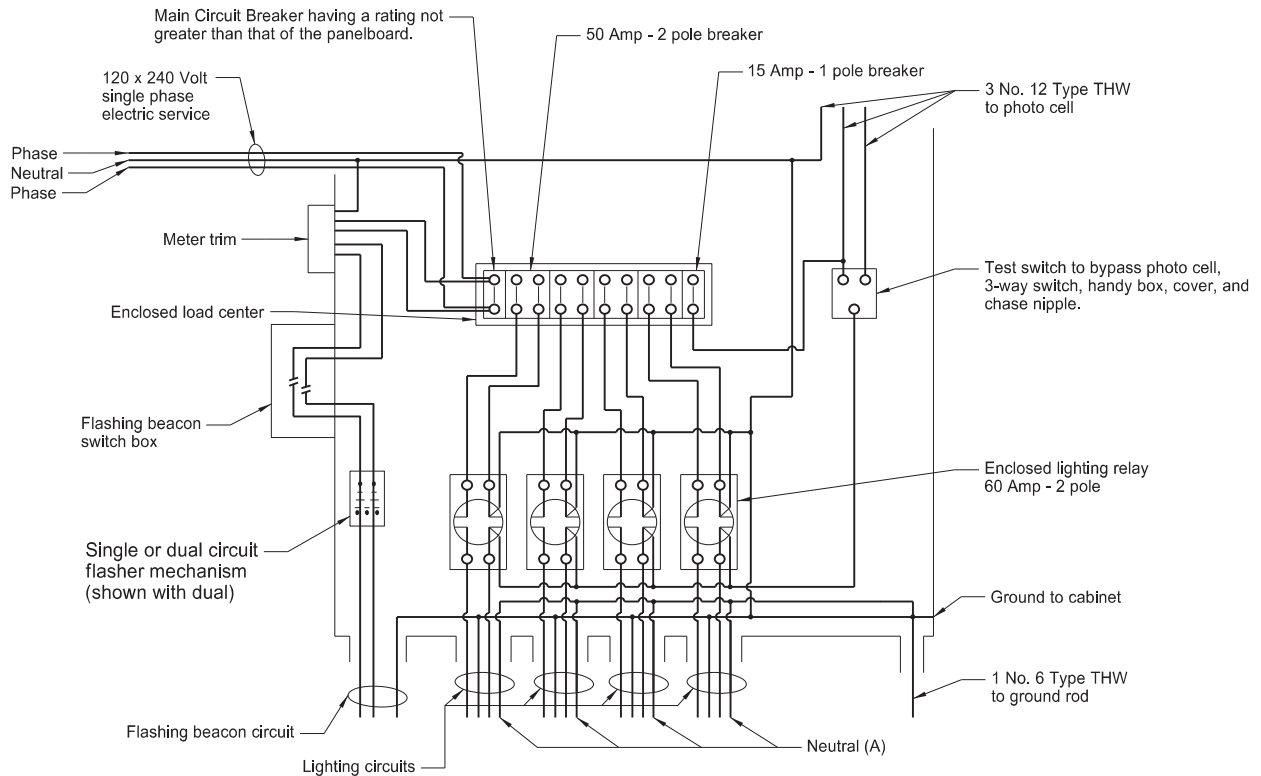


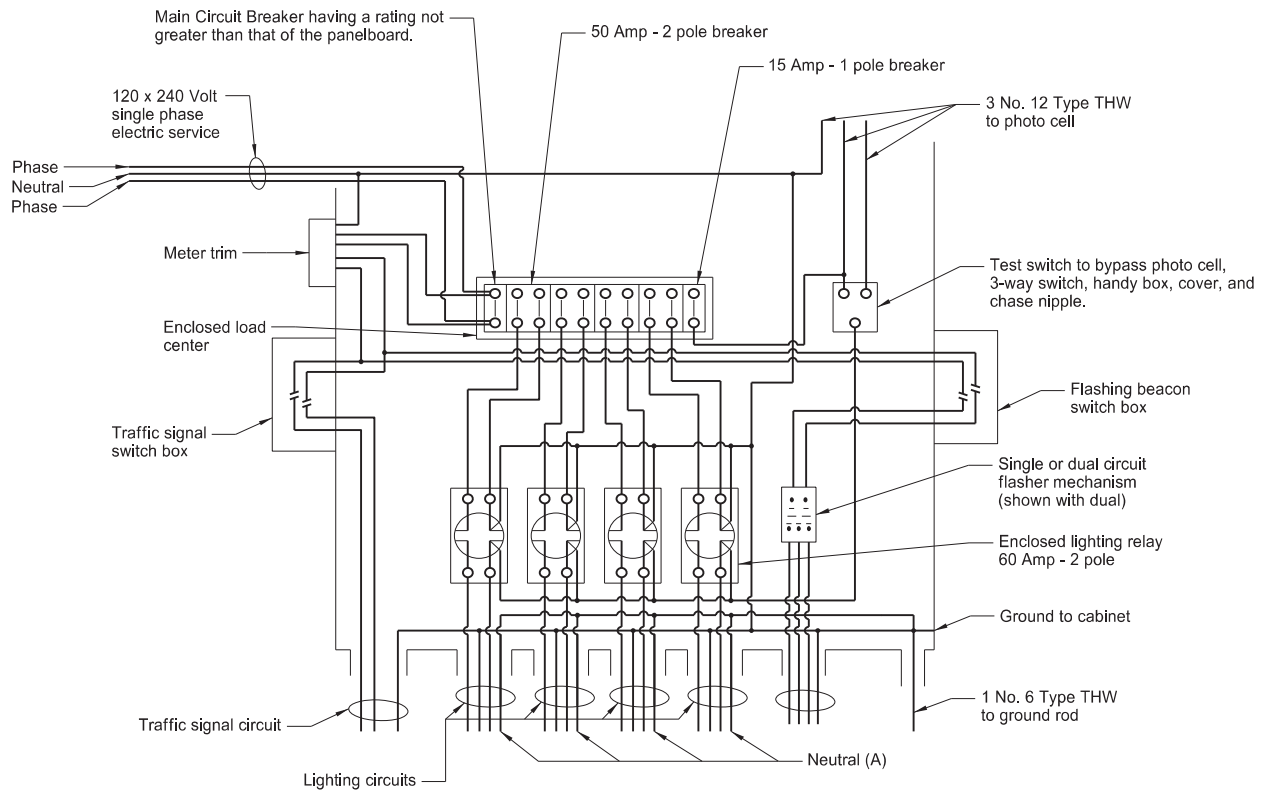
COMBINATION FEED POINT DETAILS



Combination Lighting and Signal
Feed Point Type IV



Combination Lighting and Flashing Beacon
Feed Point Type IV



Combination Lighting, Signal, and Flashing Beacon
Feed Point Type IV

Notes:

Install Type I feed point similar to Type IV, except with one electrical circuit, one 50 Amp - 2 pole breaker, and one lighting relay, normally open.

Install Type II feed point similar to Type IV, except with two electrical circuits, two 50 Amp - 2 pole breakers, and two lighting relays, normally open.

Install Type III feed point similar to Type IV, except with three electrical circuits, three 50 Amp - 2 pole breakers, and three lighting relays, normally open.

(A) Install when festoon circuits are required

NORTH DAKOTA DEPARTMENT OF TRANSPORTATION	
10-8-13	
REVISIONS	
DATE	CHANGE
10-17-17	Updated to active voice.
8-28-19	New Design Engineer PE Stamp.
8-09-24	Electronic Stamp/Signature.



08/09/24