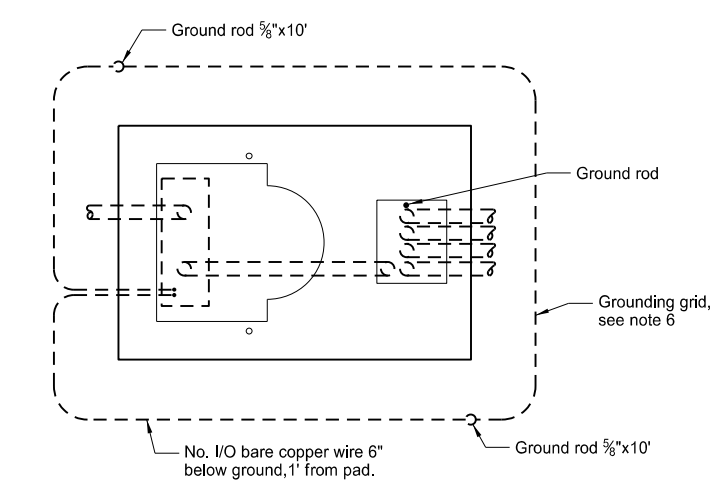
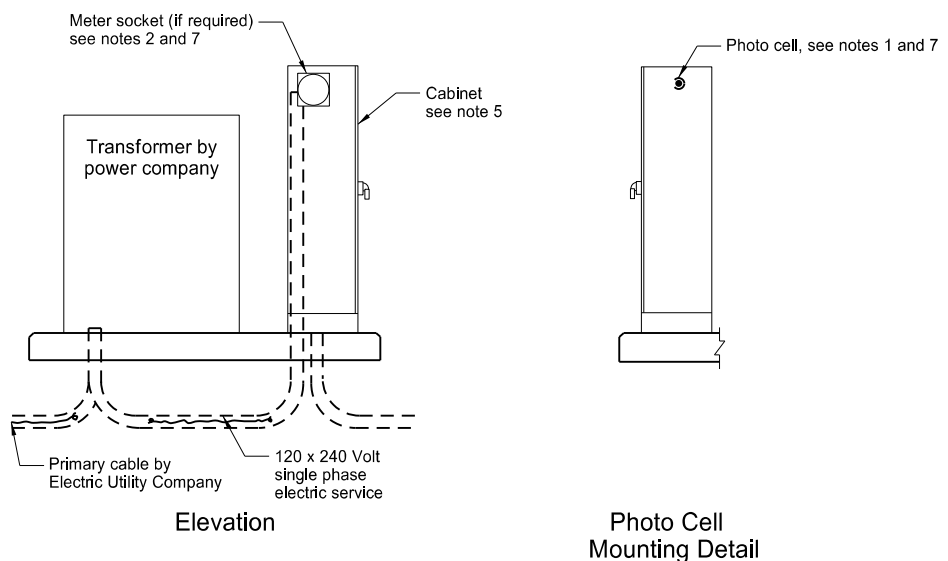
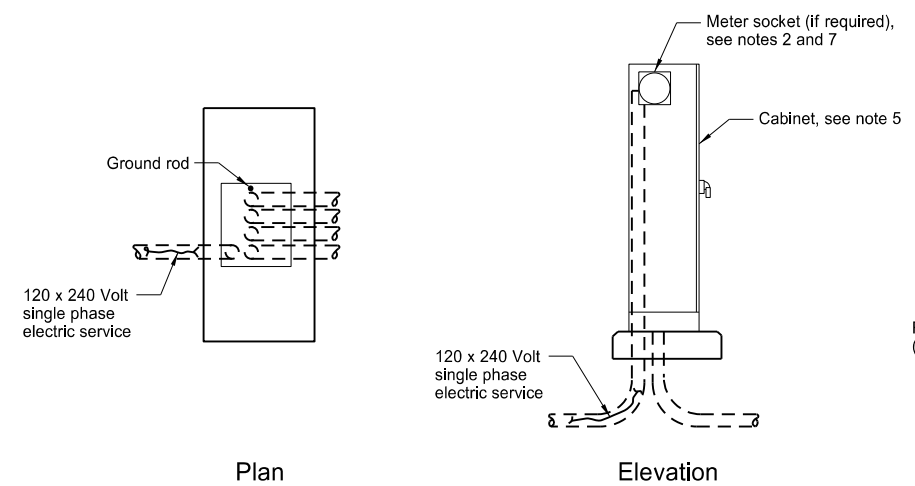


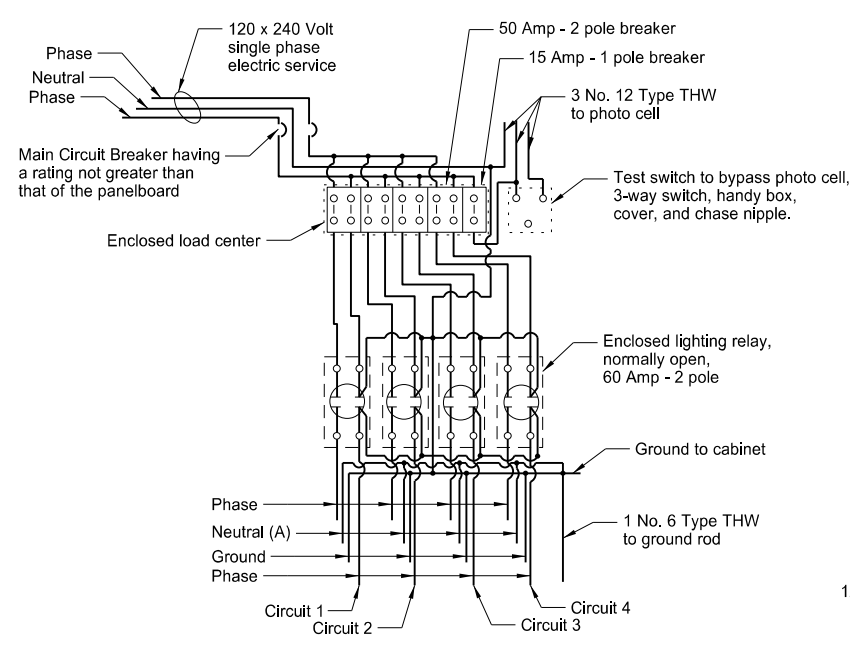
FEED POINTS
(ROADWAY LIGHTING)



Plan
Transformer and Feed Point Cabinet Pad Mounted



Plan
Elevation
Feed Point Cabinet Pad Mounted



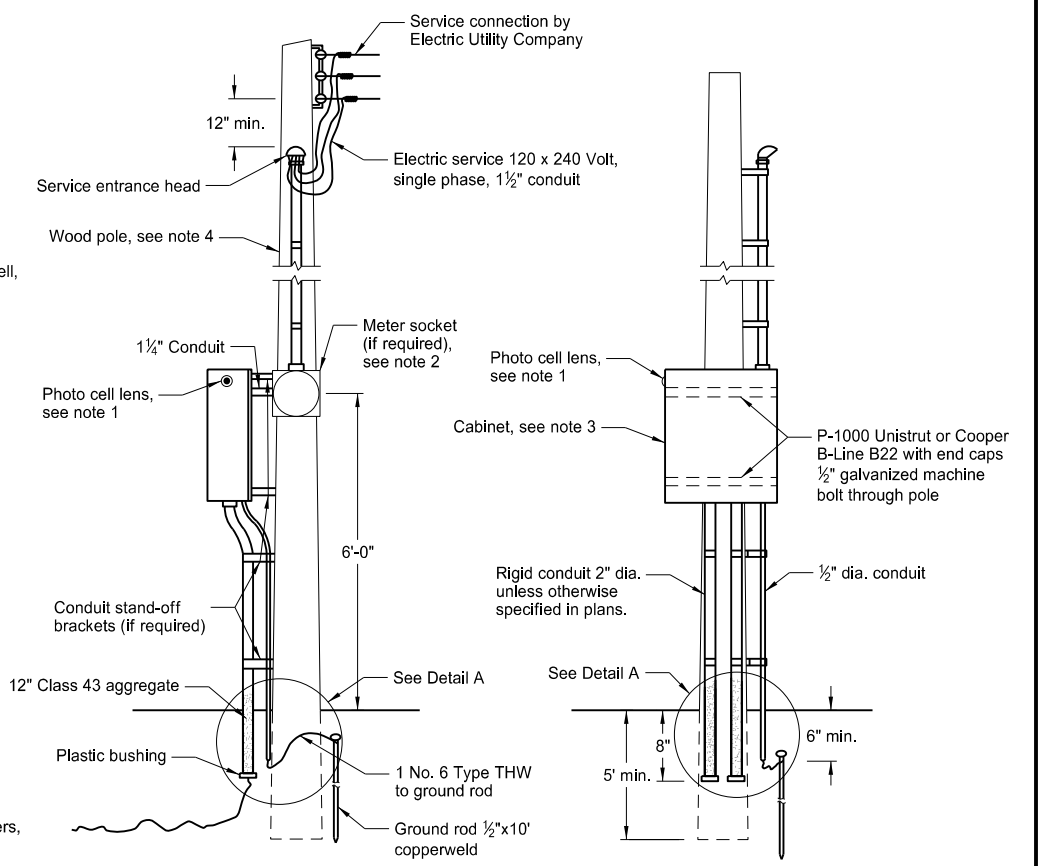
Feed Point Type IV

Provide Type I feed point similar to Type IV, except with one electrical circuit, one 50 Amp - 2 pole breakers, and one lighting relay, normally open.

Provide Type II feed point similar to Type IV, except with two electrical circuit, two 50 Amp - 2 pole breakers, and two lighting relays, normally open.

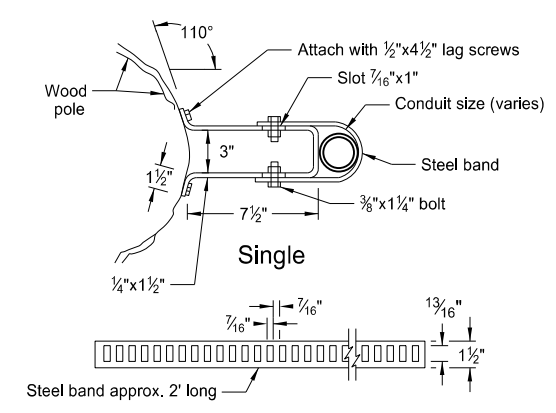
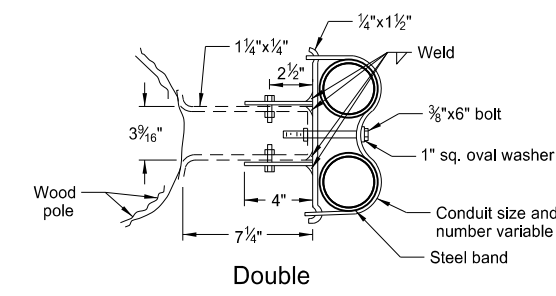
Provide Type III feed point similar to Type IV, except with three electrical circuits, three 50 Amp - 2 pole breakers, and three lighting relays, normally open.

(A) Install when festoon circuit is required.



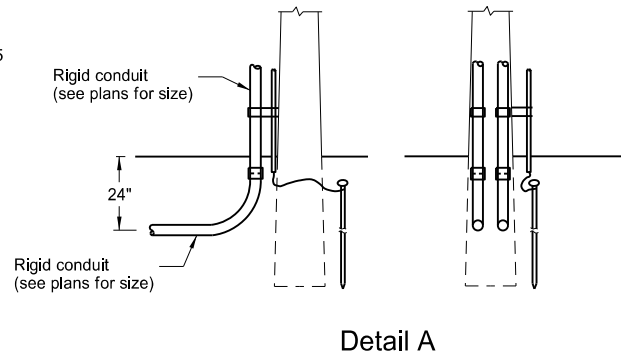
Feed Point Pole Mounted

- Notes:
1. Photo Cell: Furnish and install the photoelectric cell. Face photo lens north.
 2. Meter Socket: Install meter socket and trim if the meter is required by local Utility Company. Meter furnished and installed by Utility Company.
 3. Pole Mounted Cabinet: Provide cabinet with lock drip shield, factory installed steel backing, stainless steel hardware, and side hinge door. Shop coat cabinet with one coat of primer and two coats of exterior gray enamel.
Provide 30" high x 24" wide x 8" deep Type I and II feed points. Provide 30" high x 42" wide x 10" deep or 36" high x 36" wide x 10" deep Type III and IV feed points.
 4. Wood Pole: Provide minimum 20' Class VII full length penta pressure treated wood pole. (if required, see layout sheets)
 5. Pad Mounted Cabinet: Provide 56" high x 26" wide x 14" deep weatherproof cabinet. Minimum 12 gauge steel or aluminum with provisions for padlock. Provide steel cabinet with one coat of primer and two coats of exterior dark green enamel.
 6. Grounding Grid: Provide grounding grid with a maximum ground resistance of 25 ohms, using one or more 5/8"x10' copperweld ground rods in parallel or series at two corners. Provide a minimum distance between ground unit assemblies of 6'0".
 7. Meter Location: Do not mount the meter (if required) on the same side of the cabinet as the photo cell.



Conduit Standoff Bracket

Omission of conduit standoff brackets allowed when not required by local utility company.



Use this detail for a continuous run of conduit from the feed point to the first light standard.

NORTH DAKOTA DEPARTMENT OF TRANSPORTATION	
10-8-13	
REVISIONS	
DATE	CHANGE
7-8-14	Revised note 3.
10-17-17	Updated to active voice.
8-28-19	New Design Engineer PE Stamp.

This document was originally issued and sealed by
Kirk J Hoff,
Registration Number
PE-4683,
on 8/28/19 and the original document is stored at the North Dakota Department of Transportation