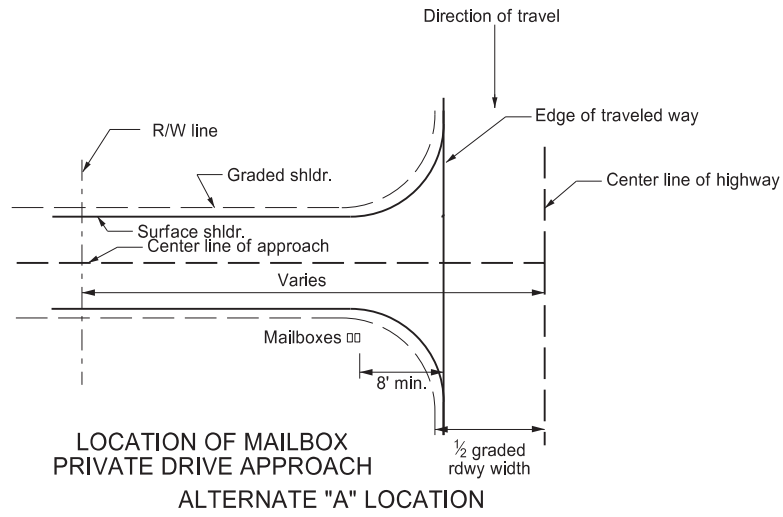
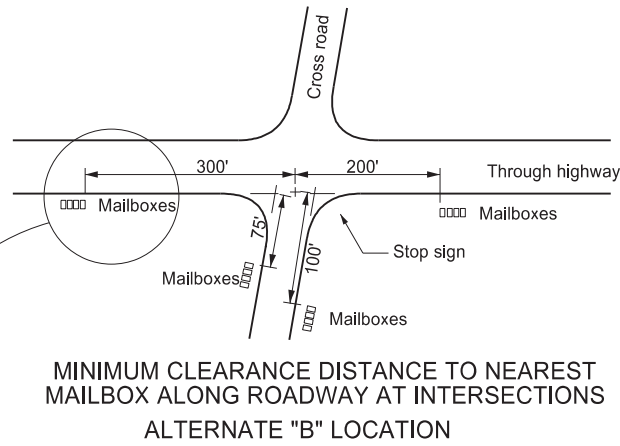


MAILBOX LOCATION DETAILS

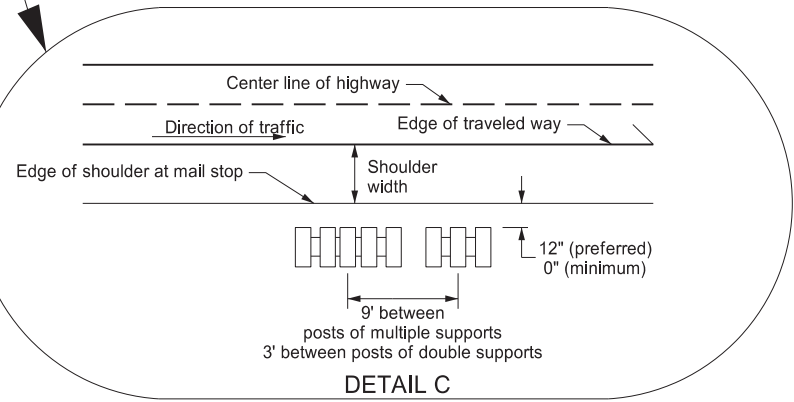
D-766-1



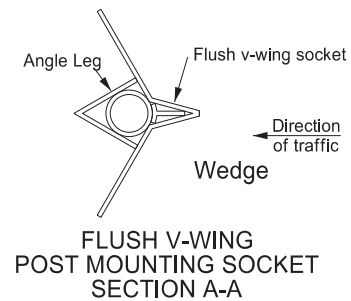
LOCATION OF MAILBOX PRIVATE DRIVE APPROACH ALTERNATE "A" LOCATION



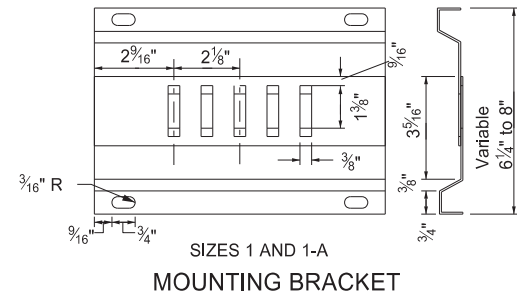
MINIMUM CLEARANCE DISTANCE TO NEAREST MAILBOX ALONG ROADWAY AT INTERSECTIONS ALTERNATE "B" LOCATION



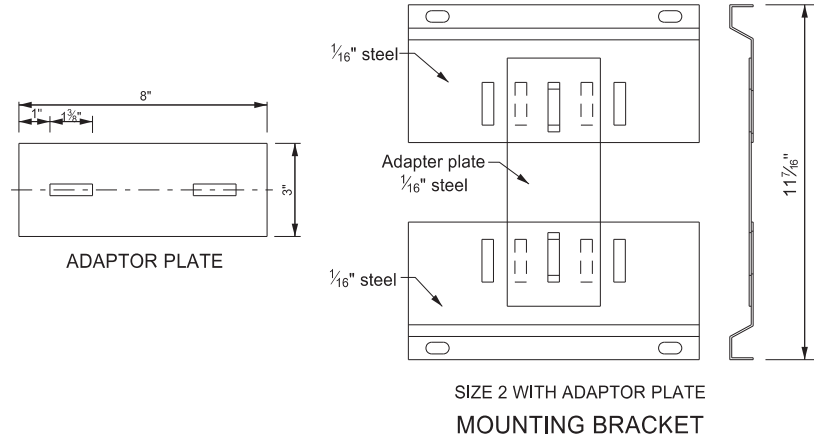
DETAIL C



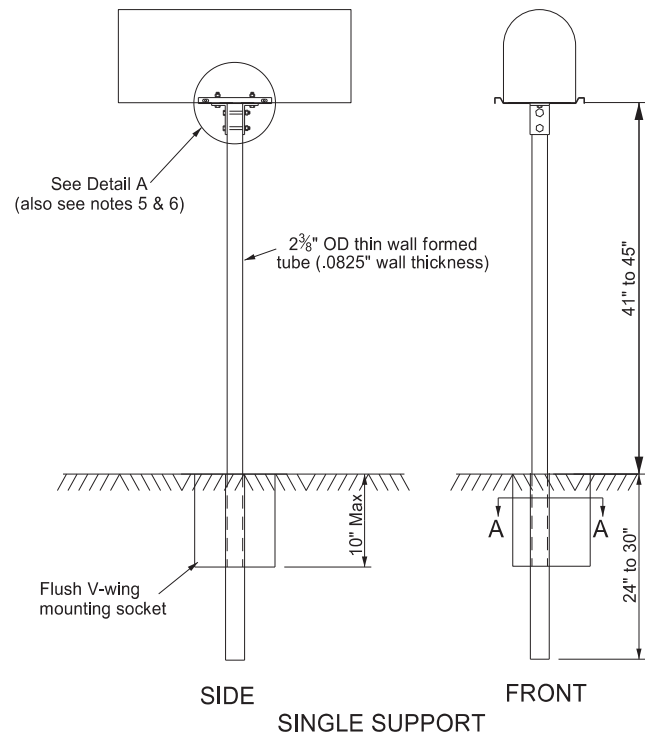
FLUSH V-WING POST MOUNTING SOCKET SECTION A-A



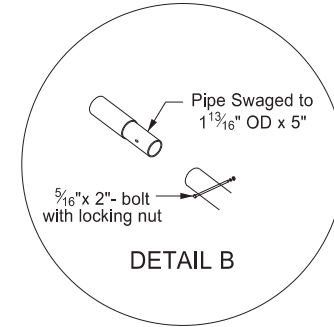
SIZES 1 AND 1-A MOUNTING BRACKET



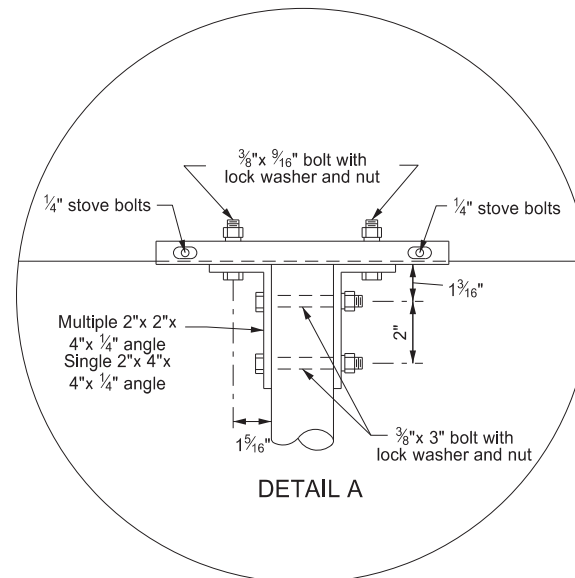
SIZE 2 WITH ADAPTOR PLATE MOUNTING BRACKET



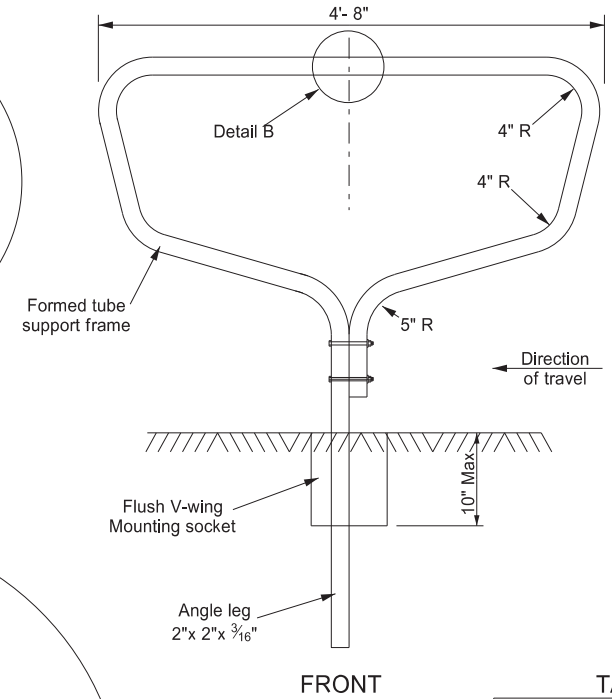
SINGLE SUPPORT



DETAIL B



DETAIL A



FRONT

TABLE A
TYPICAL MAILBOX DIMENSIONS

Size	Width	Height	Length
1	6 1/2"	8 1/2"	19"
1-A	8"	10 1/2"	21"
2	11 1/2"	13 1/2"	23 1/2"

Notes:

- The mailbox support and hardware details consist of the "V-Loc Mailbox Support System" manufactured by: Tapco Traffic & Parking Control Co. Inc.
Use any equal crash tested and Federal Highway Administration approved support system meeting the requirements of NCHRP Report 350 or MASH. Install approved alternate mailbox assemblies in the manner and arrangement crash tested.
- Install mailboxes in Alternate "A" locations when possible. Install mailboxes in Alternate "B" locations when warranted by existing field conditions.
- Locate mailboxes on the right-hand side of the road in the direction traveled by the carrier. The Engineer will verify the correct direction with the postmaster before installation.
- Install mailboxes on private drive approaches on the downstream side of the approach.
- Install angle connection parallel to traffic flow for size 2 mailbox mounted on single posts.
- For Size 2 mailbox mounted on multiple supports, attach the adapter plate to mounting bracket with 2 each, 3/8" by 9/16" bolts with lock washers and nuts. Then attach the unit to the formed tube support frame using 4 angle connections as shown in Detail A.
- Space multiple support frames a minimum of 4 feet apart. Space single support frames a minimum of 3 ft apart. Do not place more than five No. 1 mailboxes, three No. 2 mailboxes, or any combination of four No. 1-A and No. 2 mailboxes on multiple support frames.

NORTH DAKOTA DEPARTMENT OF TRANSPORTATION	
9-15-2010	
REVISIONS	
DATE	CHANGE
08-25-2023	Dsn Engr stamp/signature update



08/25/23