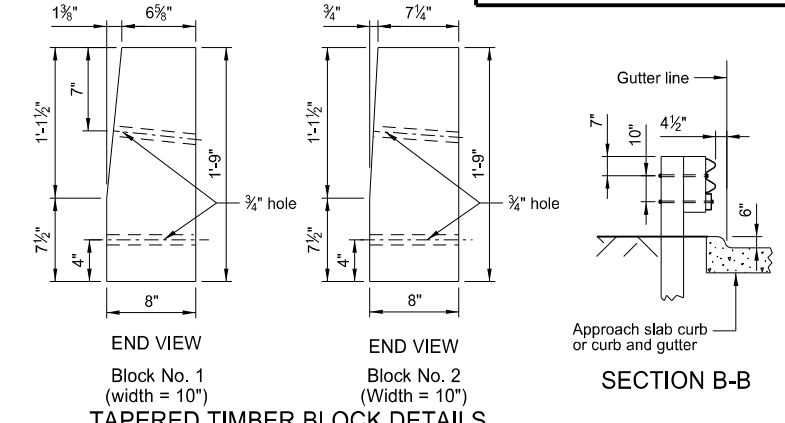
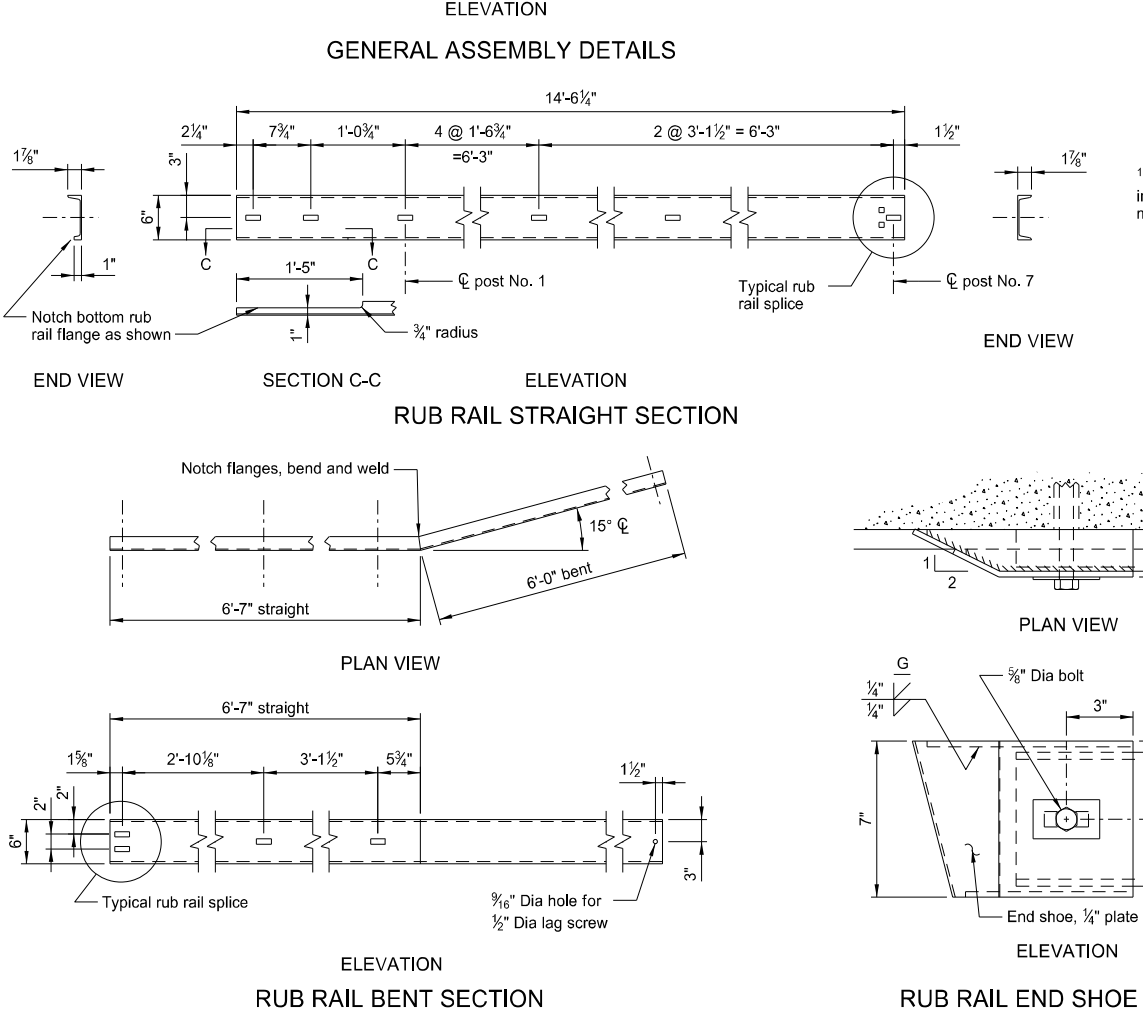
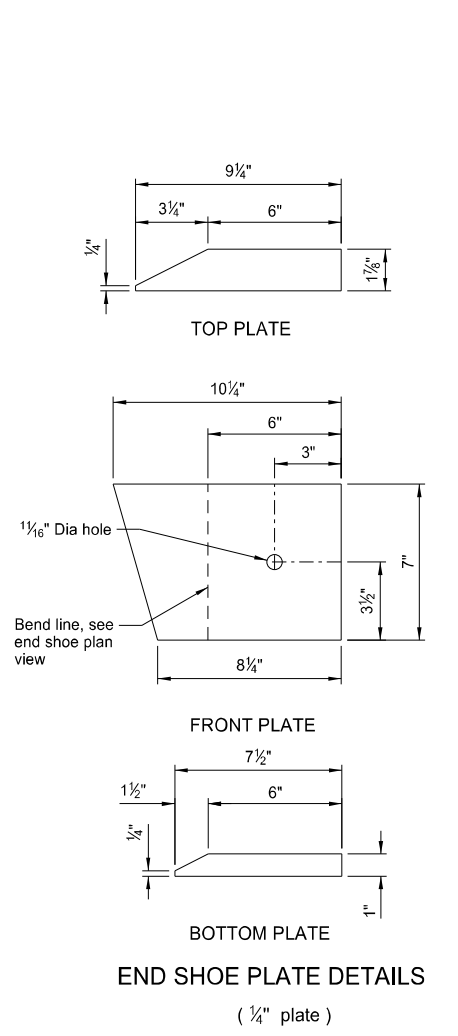
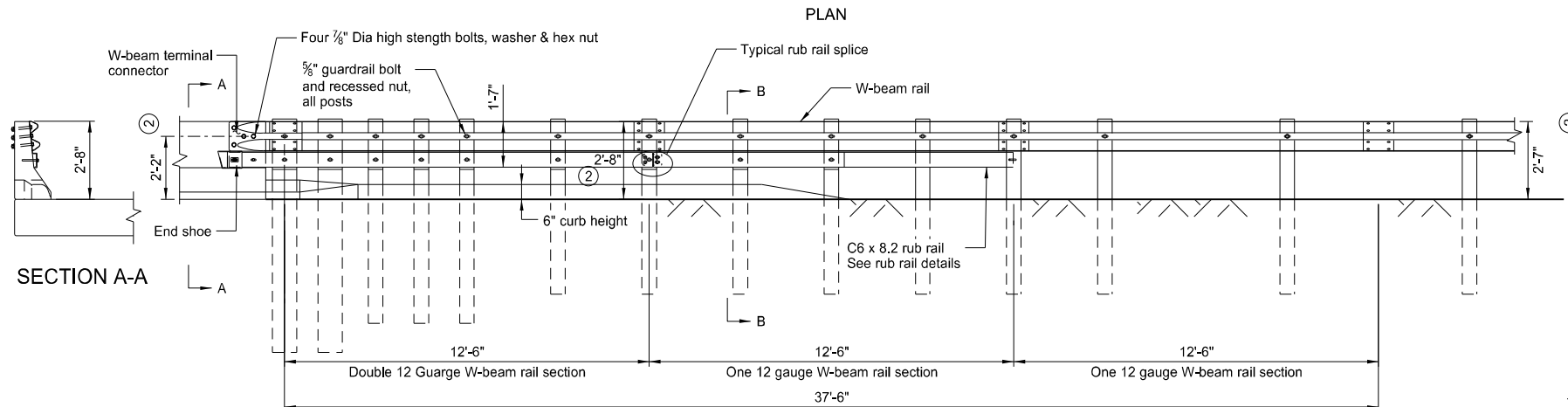
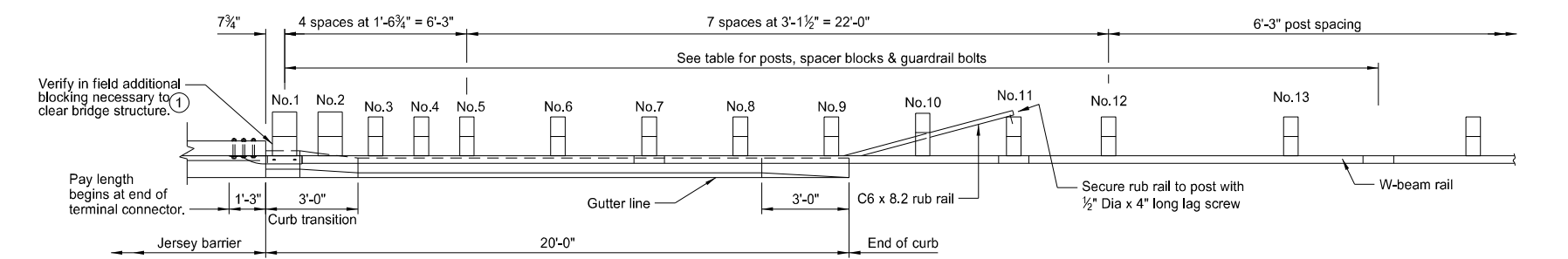


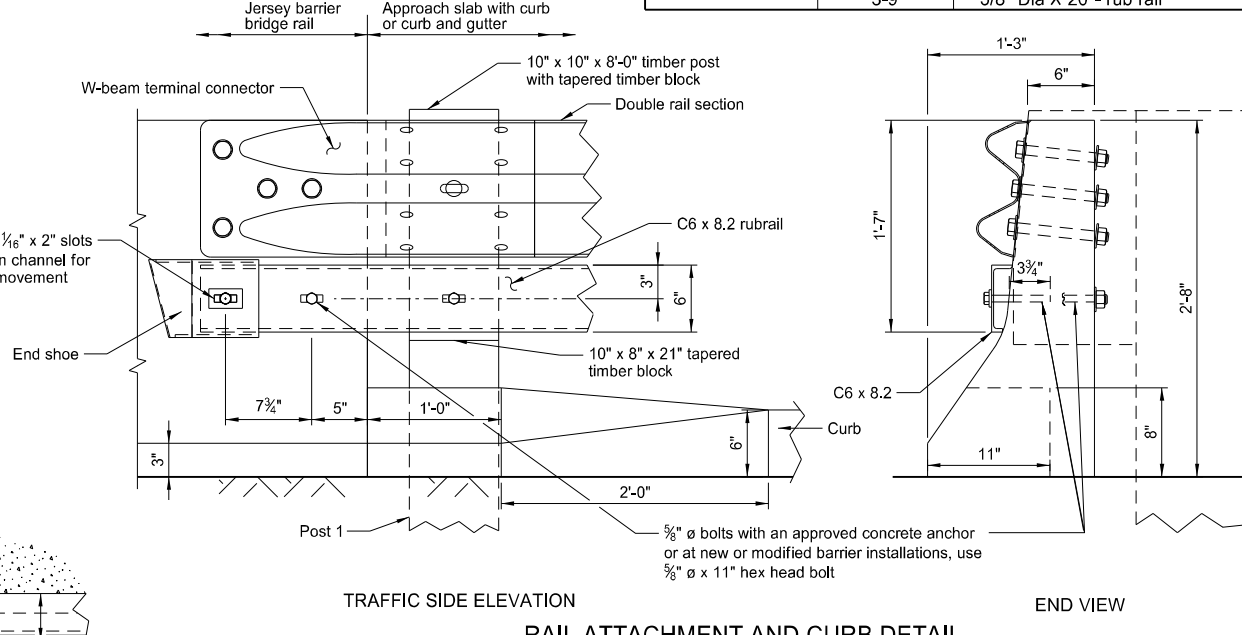
# MGS W-BEAM TRANSITION WITH APPROACH CURB TO IN PLACE CONCRETE JERSEY BARRIER

D-764-64



POST, TIMBER BLOCK & BOLT TABLE

DESCRIPTION	POST NO.	SIZE
Post	1 & 2	10" X 10" X 8'-0" min long
	3-5	6" X 8" X 7'-0" min long
	6-13	6" X 8" X 6'-0" min long
Spacer block	1-2	10" X 8" X 21" tapered block
	3-9	6" X 8" X 21"
	10	6" X 9 3/4" X 14"
	11-13	6" X 8" X 14"
Guardrail bolt & recessed nut	1 & 2 & 10	5/8" Dia X 20" - guardrail
	3-9, 11-13	5/8" Dia X 18" - guardrail
	1-2	5/8" Dia X 22" - rub rail
	3-9	5/8" Dia X 20" - rub rail



- ① Verify need for additional blocking at post No.1 in the field.
- ② Height is 2'-8" from 0' to 12'-6" from bridge. Height tapers from 2'-8" to 2'-7" between 12'-6" to 37'-6" from bridge.

NOTES:

Galvanize AASHTO 270M Grade 250 C6 x 8.2 rub rail and structural steel after fabrication

All rub rail slotted holes are 1 1/16" x 2".

All rub rail square holes are 1 1/16".

Use timber posts and blocks for W-beam guardrail.

NORTH DAKOTA DEPARTMENT OF TRANSPORTATION	
7-14-17	
REVISIONS	
DATE	CHANGE
12-02-20	Updated notes to active voice.

