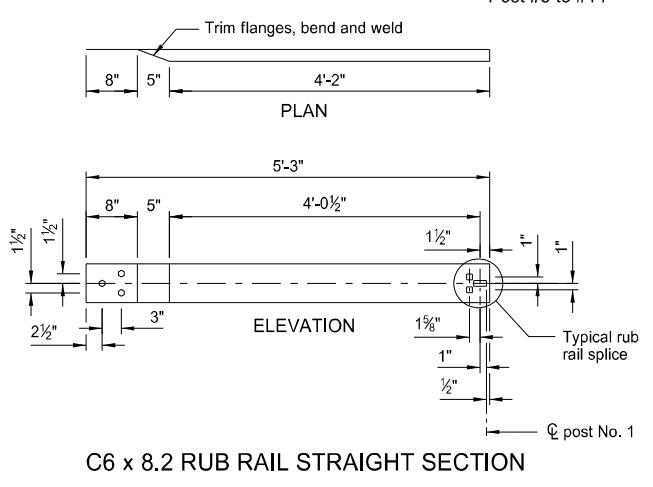
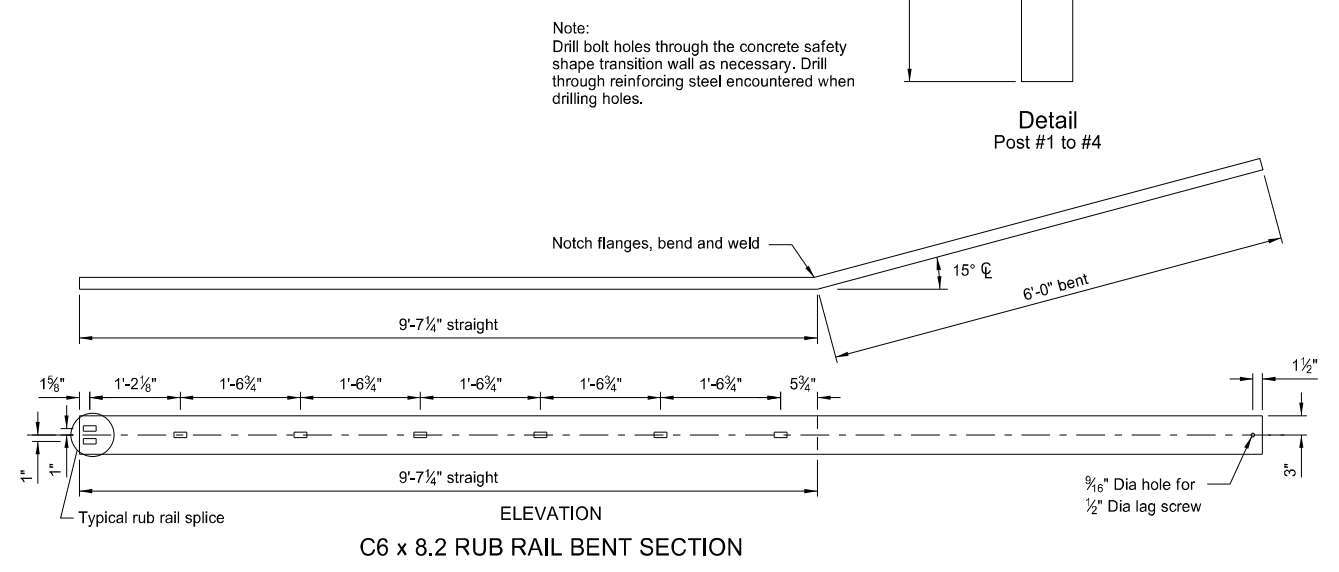
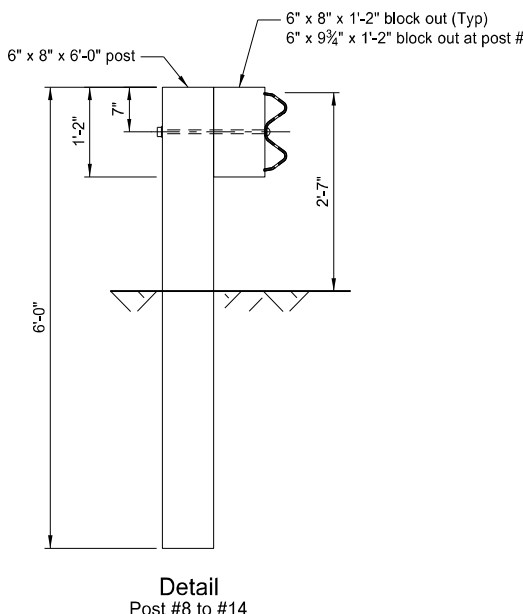
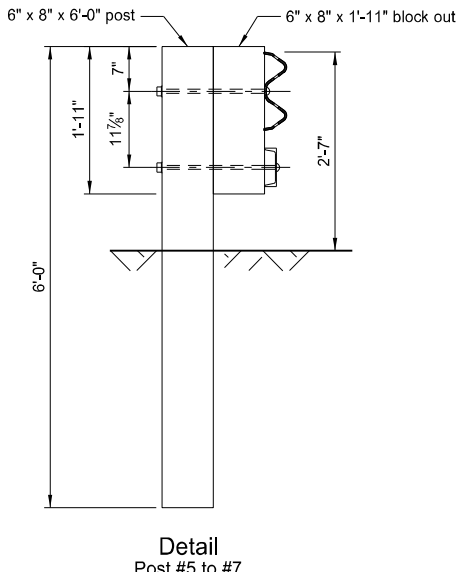
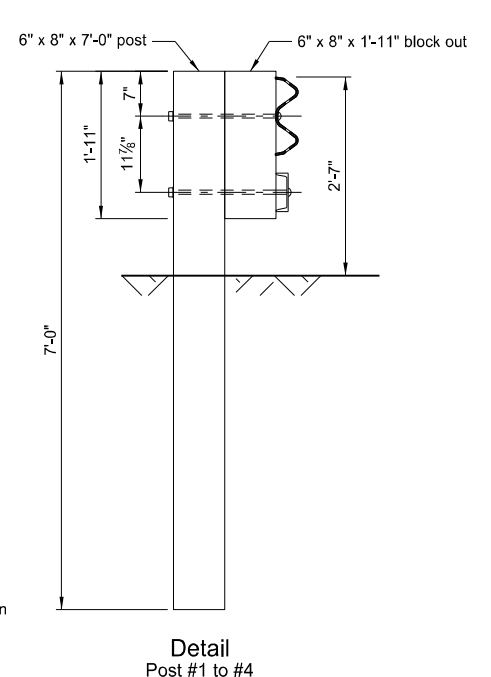
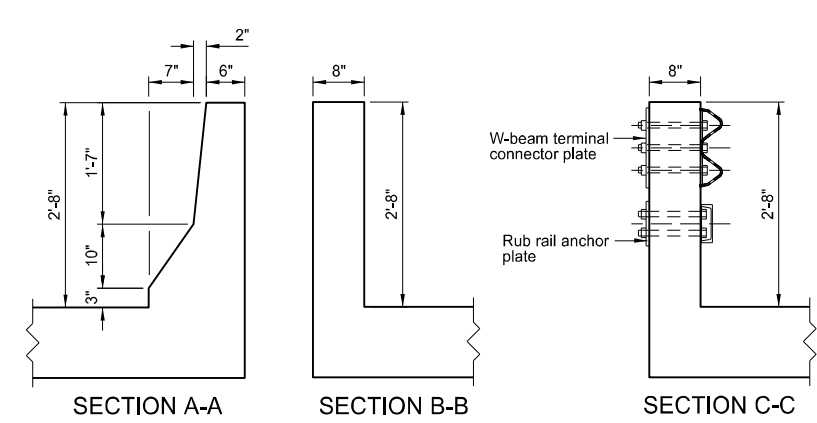
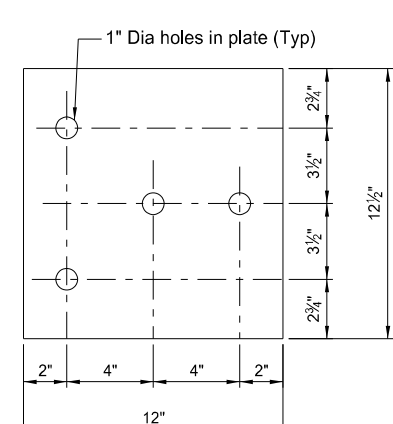
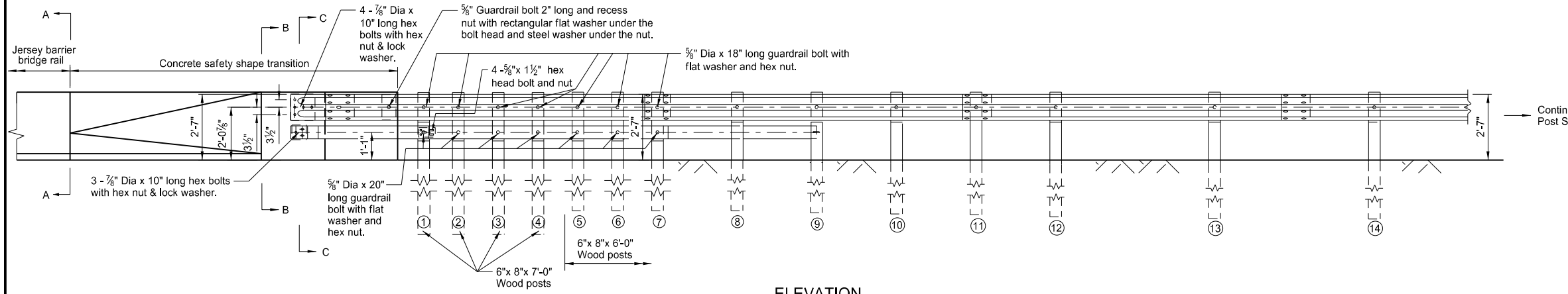
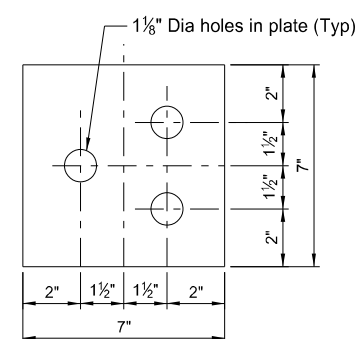
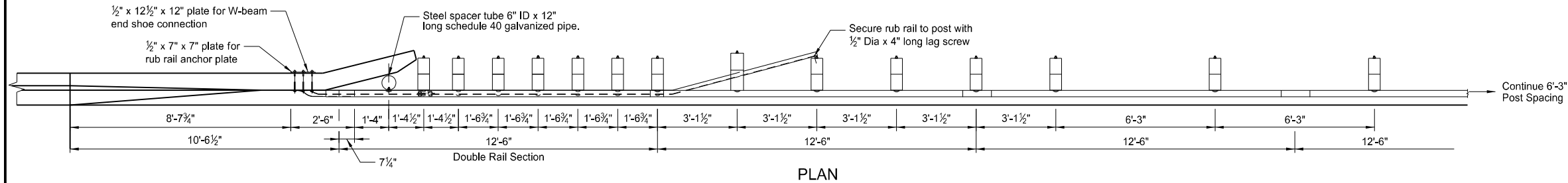


MGS W-BEAM TRANSITION TO CONCRETE SAFETY SHAPE TRANSITION

D-764-63



NORTH DAKOTA DEPARTMENT OF TRANSPORTATION	
7-14-17	
REVISIONS	
DATE	CHANGE
12-02-20	Updated notes to active voice.

KIRK J. HOFF
REGISTERED
PROFESSIONAL
PE-4683
ENGINEER
NORTH DAKOTA
12 02 2020