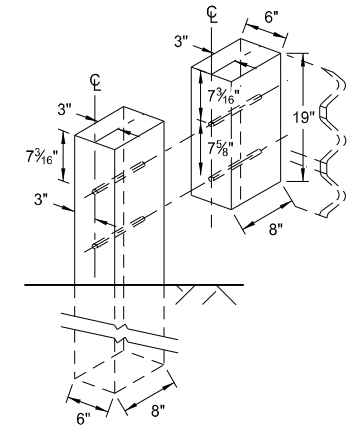
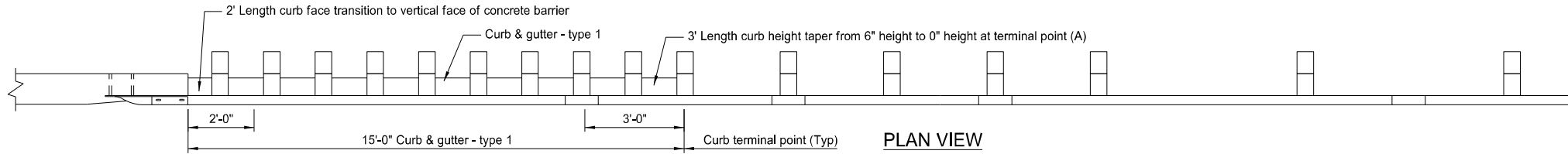
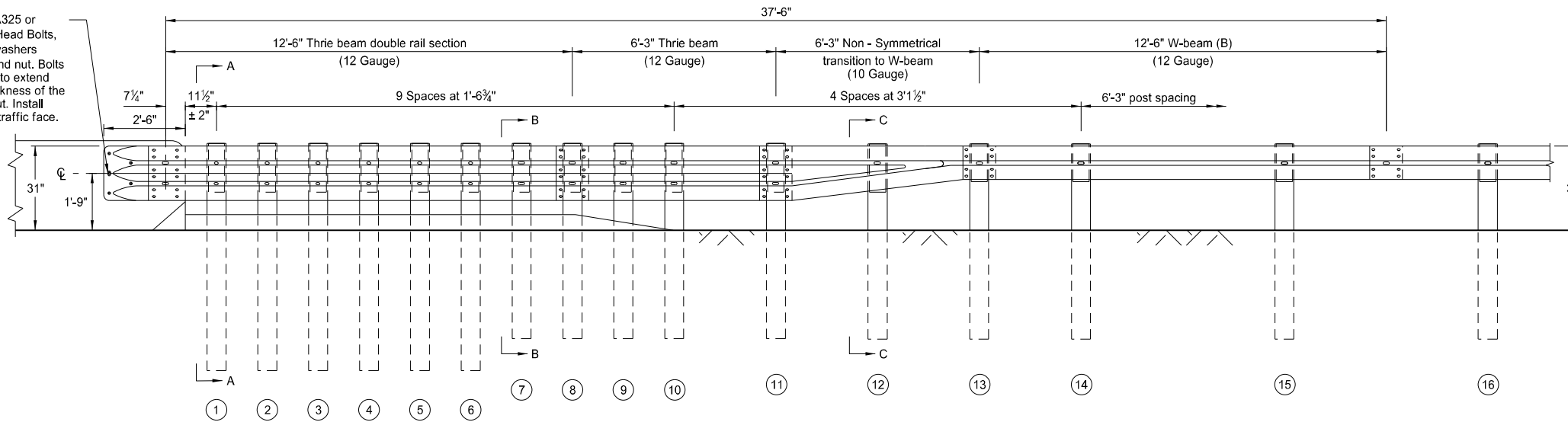


MGS W-BEAM TRANSITION WITH APPROACH CURB TO CONCRETE SINGLE SLOPE OR JERSEY BARRIER

D-764-60

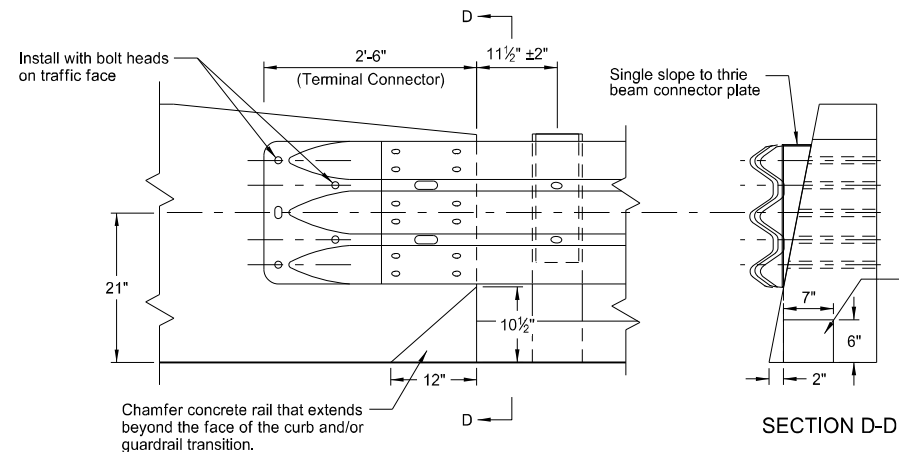
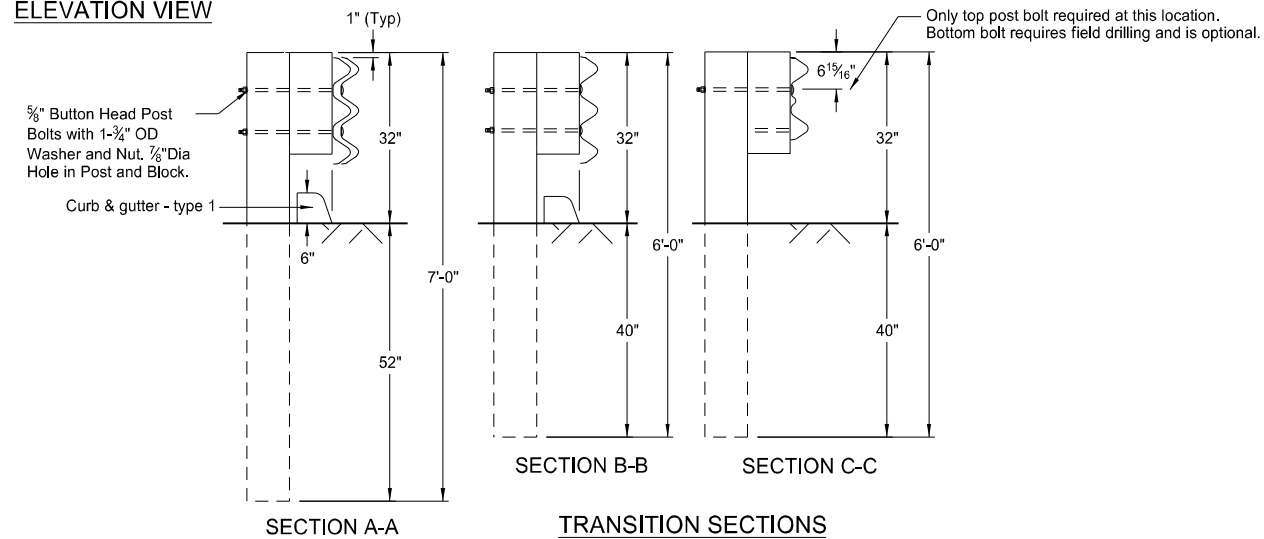
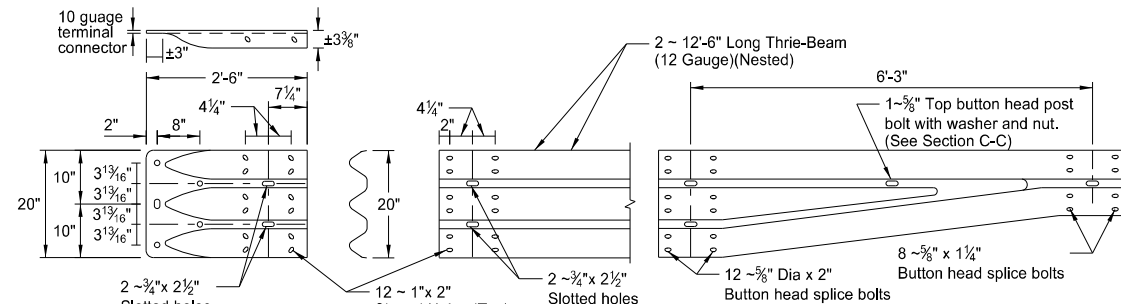


5 - 5/8" Dia. (ASTM A325 or A449) Heavy Hex Head Bolts, with two 1 3/4" O.D. washers under each head and nut. Bolts of sufficient length to extend through the full thickness of the rail, washer, and nut. Install with bolt heads on traffic face.

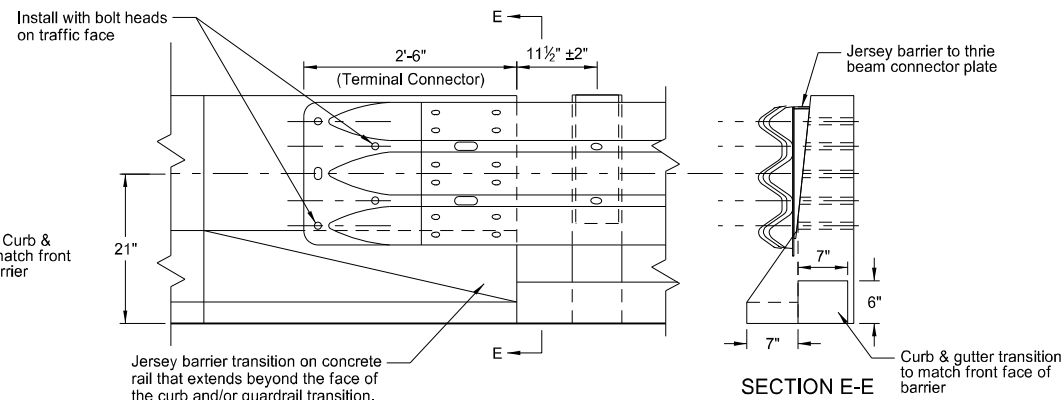


TRANSITION POST AND TIMBER BLOCKOUT SIZING		
POST NO.	POST SIZE	BLOCKOUT SIZE
1-6	6" X 8" X 7'-0" long	6" X 8" X 19"
7-12	6" X 8" X 6'-0" long	6" X 8" X 19"
13-16	6" X 8" X 6'-0" long	6" X 8" X 14"

ELEVATION VIEW



CONNECTION TO CONCRETE SINGLE SLOPE BRIDGE RAIL AND TRAFFIC BARRIERS



CONNECTION TO CONCRETE JERSEY BARRIER BRIDGE RAIL AND TRAFFIC BARRIERS

- (A) Where curb is required to continue past 15' length, taper the curb down to 3" height at the terminal point shown above, instead of 0" height. Use 3" height curb between posts 10 and 16.
- (B) Install 12'-6" length W-beam double rail section at location where curb extends past 15' length.

NORTH DAKOTA DEPARTMENT OF TRANSPORTATION	
7-14-17	
REVISIONS	
DATE	CHANGE
12-02-20	Updated notes to active voice.