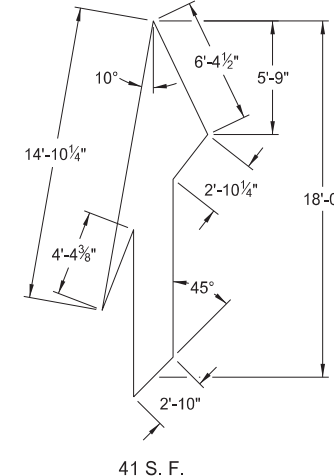
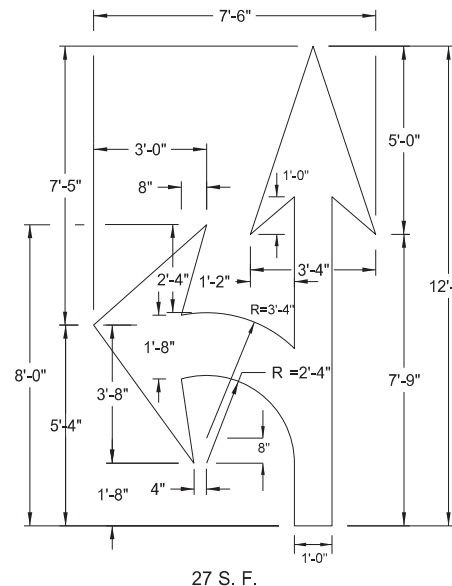
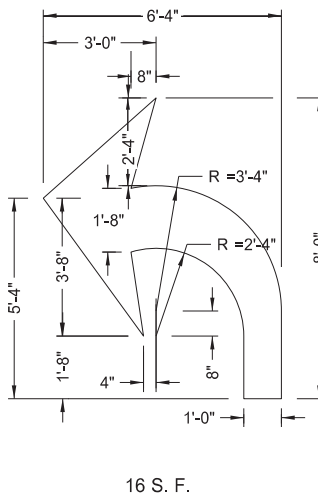
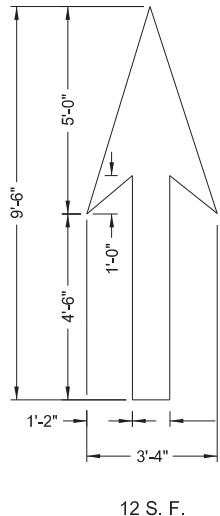
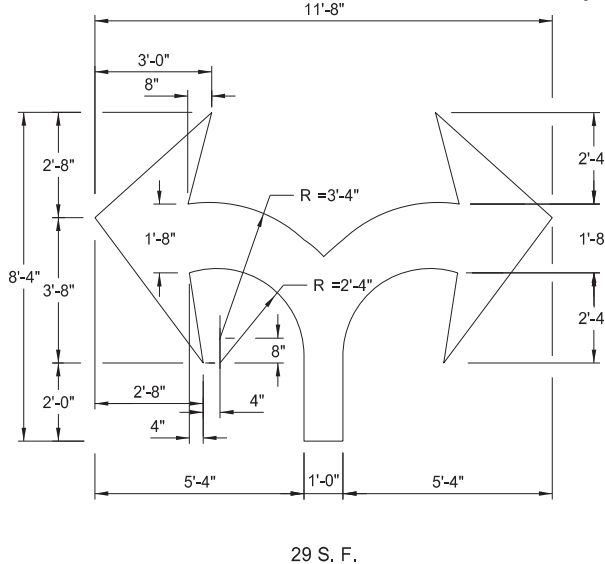
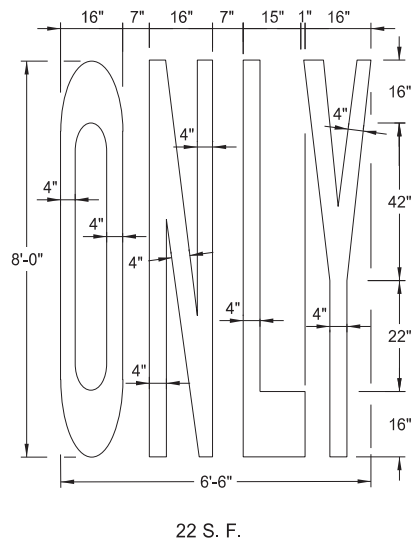


Pavement Marking Message Details

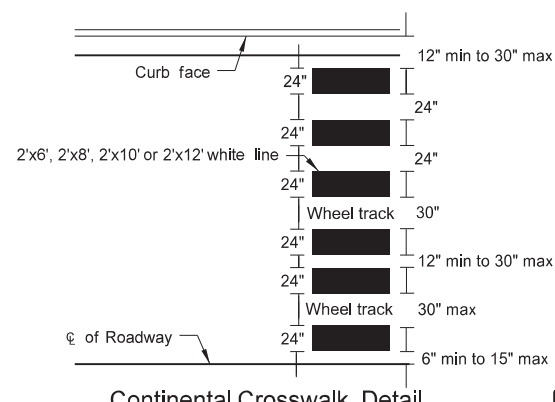
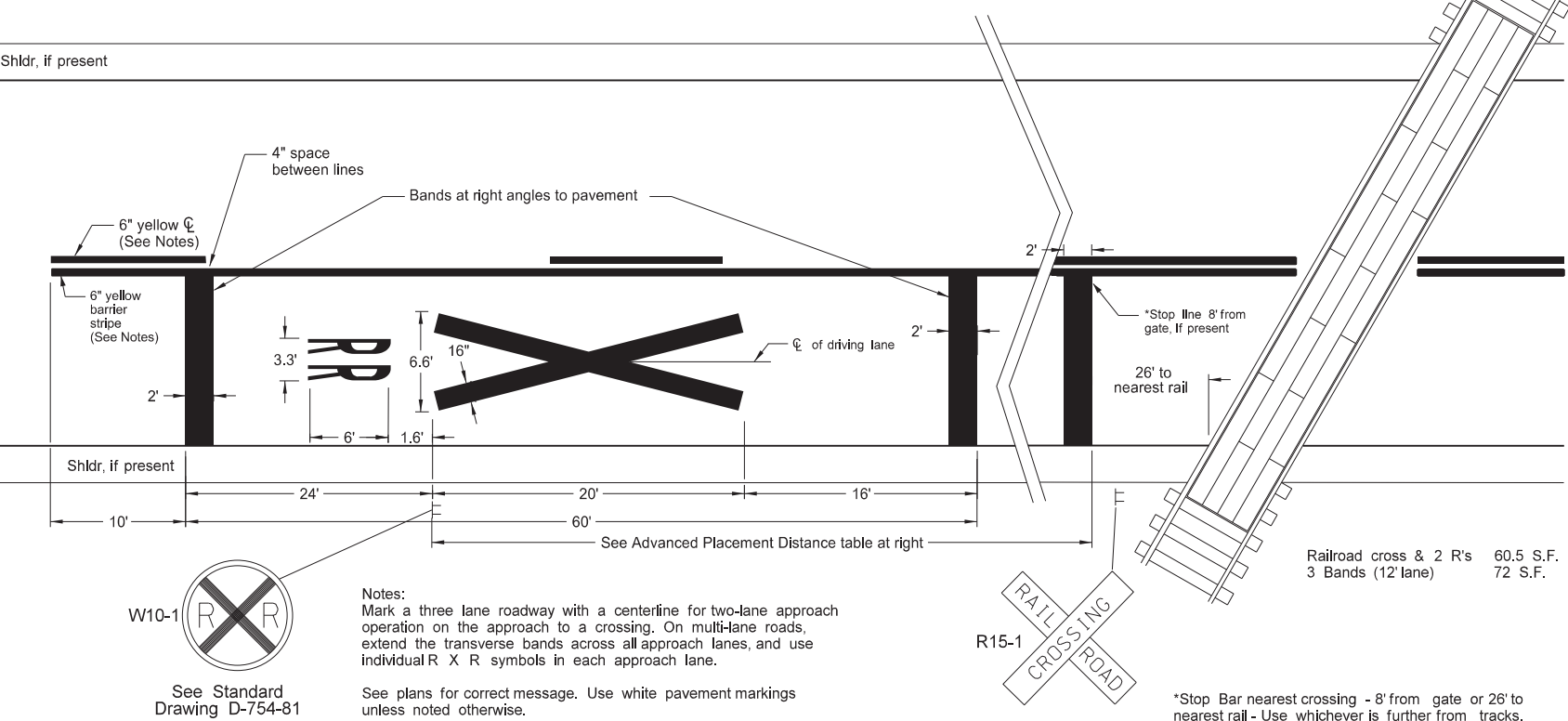
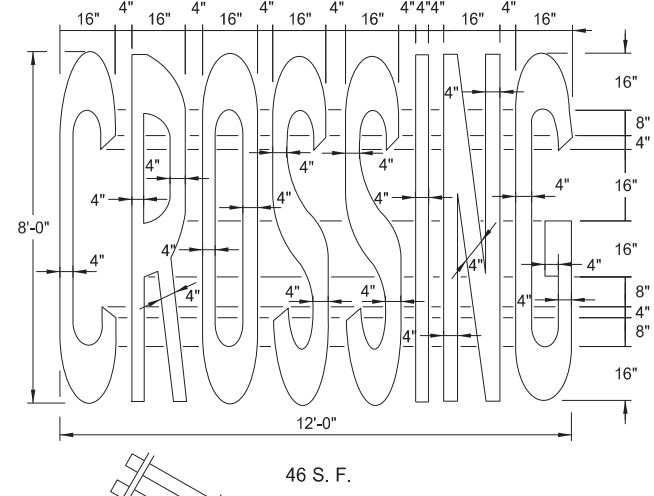
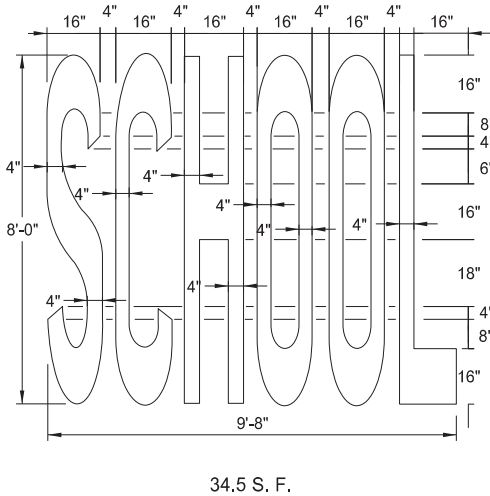
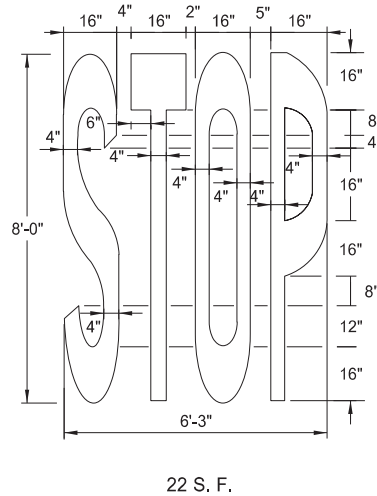
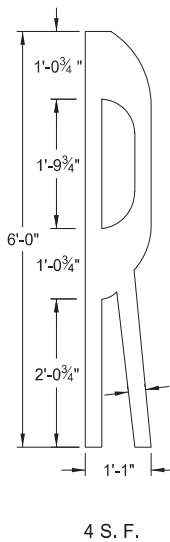
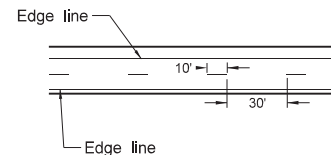
D-762-1



Note: Rotate merge arrow 20° from edge of roadway.

Speed Limit	Chevron Width	Chevron Spacing 45° to Traffic
0-25 mph	8"	5'
30-40 mph	8"	15'
45 mph and above	12"	25'

Chevron Crosshatching Table



Advance Placement Distance for Railroad Warning Signs	
Posted or 85th Percentile Speed	Advance Distance
20 mph	min. 100 ft
25 mph	min. 100 ft
30 mph	min. 100 ft
35 mph	min. 100 ft
40 mph	125 ft
45 mph	175 ft
50 mph	250 ft
55 mph	325 ft
60 mph	400 ft
65 mph	475 ft
70 mph	550 ft

NORTH DAKOTA DEPARTMENT OF TRANSPORTATION	
12-6-11	
REVISIONS	
DATE	CHANGE
10-17-17	Updated to active voice.
08-27-19	New Design Engineer PE Stamp.
01-28-2020	Revised min Stop Bar distance to rail.
11-22-2023	Revised pavement marking widths.

NOTES:  
1. Normal width line - 6 inches wide for freeways, expressways, and ramps; 6 inches for all other roadways with speed limits > 40 mph.  
2. Use 4 or 6 inch wide pavement marking for all other roadways with speed limits ≤ 40 mph.



\*Stop Bar nearest crossing - 8' from gate or 26' to nearest rail - Use whichever is further from tracks.