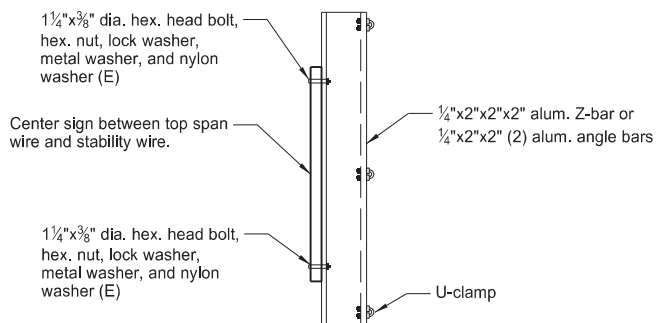
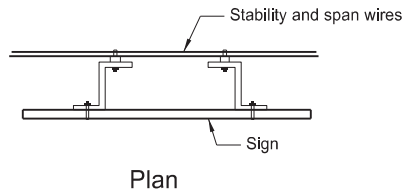
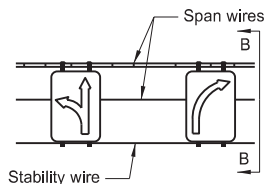
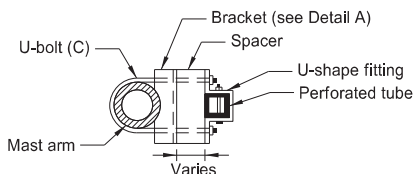


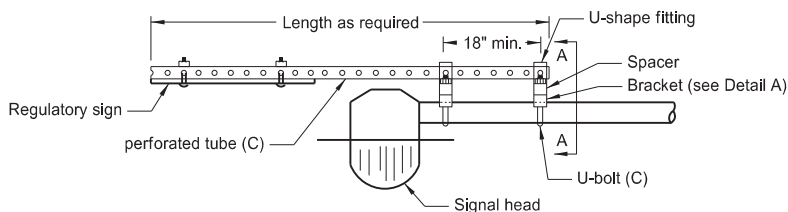
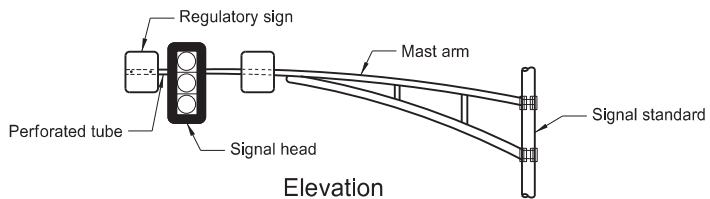
LIGHT STANDARD, SIGNAL STANDARD, AND SPAN WIRE MOUNTED SIGN ASSEMBLY DETAIL



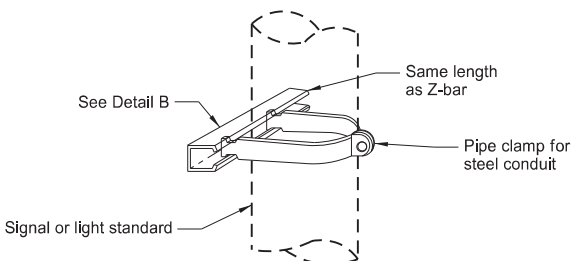
Section B-B
Span Wire Mounted Sign Detail



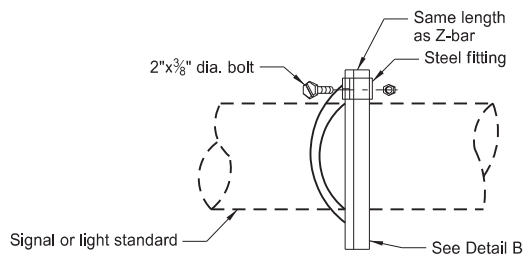
Section A-A



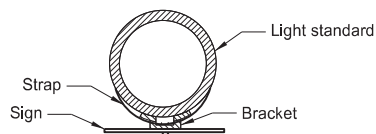
Sign Mounted Beyond End of Mast Arm Detail



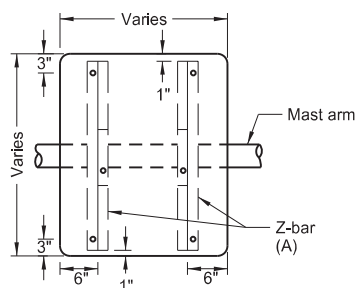
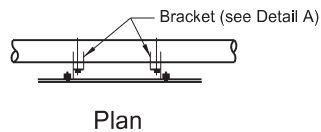
Vertical Mounting
(Use 2 clamps per sign)



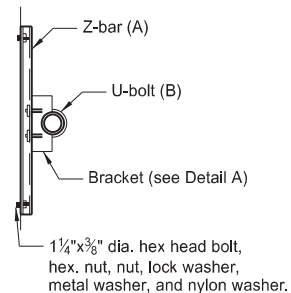
Horizontal Mounting
alternate clamp mounting
(Use 2 clamps per sign)



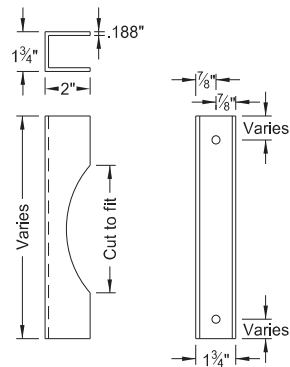
Light Standard Mounted Sign Bracket Detail
Max. 24"x30" signs (D)



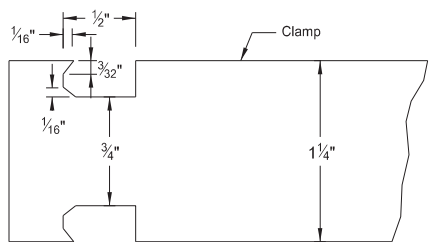
Elevation



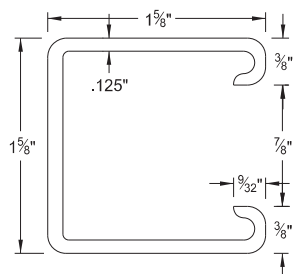
Side View



Detail A



Clamp Detail



Detail B Steel Channel

Post Size dia.	Clamp Gauge min.
3½" to 5"	11
6" to 12"	10

Clamp	
Post Size dia. in.	D in.
3½	3
4	3⅜
5	5⅛
6	7⅞
8	13⅞
10	20¾
12	29⅝

NORTH DAKOTA DEPARTMENT OF TRANSPORTATION	
10-3-13	
REVISIONS	
DATE	CHANGE
8-30-18	Updated notes to active voice .
9-05-19	New Design Engineer PE Stamp.
8-08-24	Electronic Stamp/Signature.



08/08/24