

Notes:

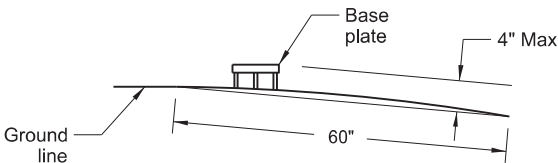
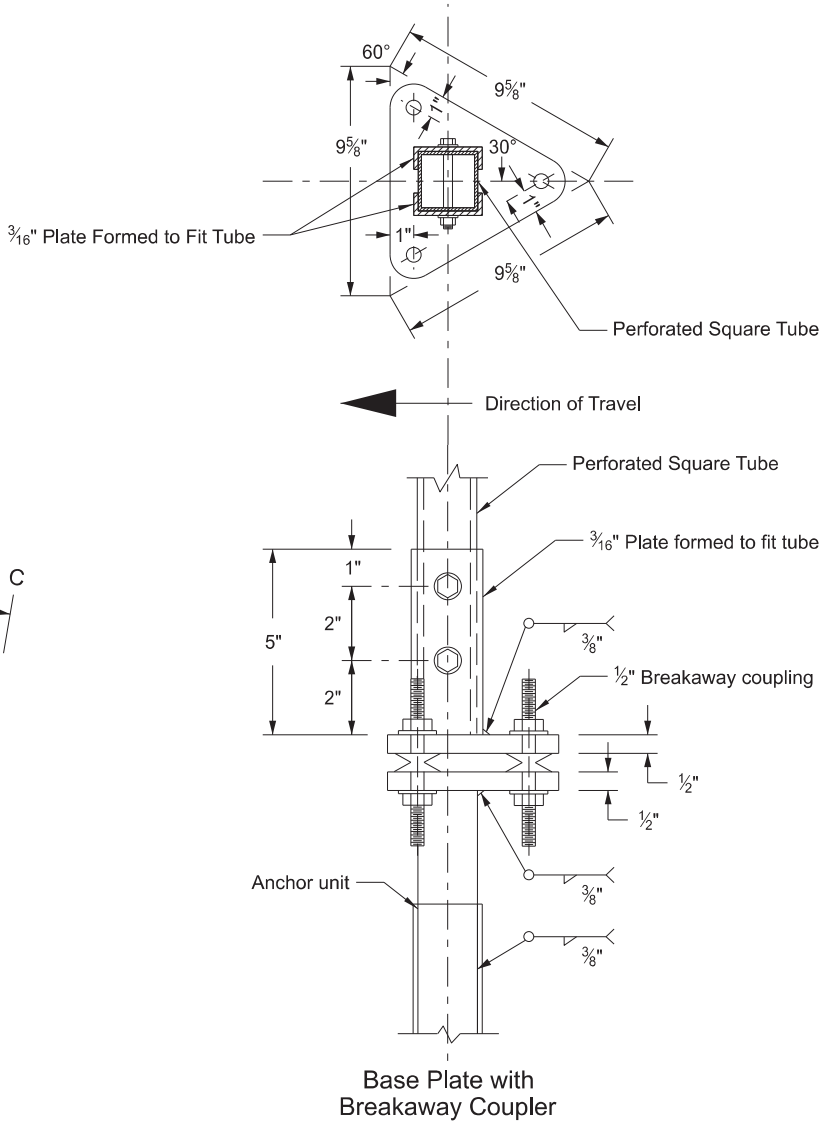
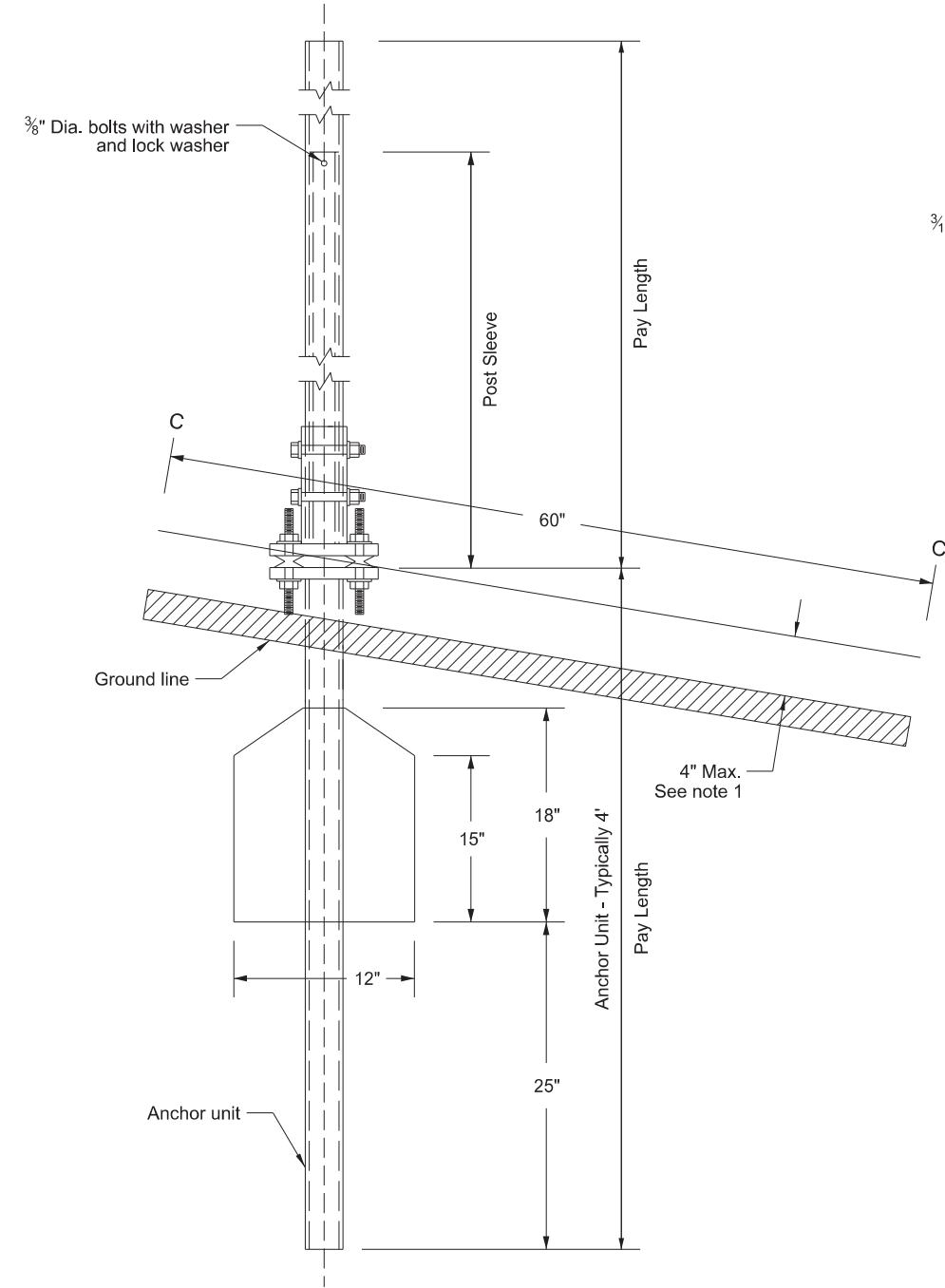
1. 4" Vertical clearance of anchor or breakaway base. The 4" x 60" measurement is above and below post location and also back and ahead of post.
2. Use anchor unit of the same size and specification as the post.
3. Provide a minimum 8' distance between the first and fourth post on four post signs.
4. Use the breakaway base system on standard D-754-24 or the breakaway coupling system manufactured from material meeting the requirements of ASTM A325 fasteners with the special requirements specified by DENT BREAKAWAY IND., INC. which meets the test requirements of NCHRP Report 350.

Number of Posts	Telescoping Perforated Tube						
	Post Size In.	Wall Thick-ness Gauge	Sleeve Size In.	Wall Thick-ness Gauge	Slip Base	Anchor Size Without Slip Base In.	Anchor Wall Thickness Guage
1	2	12			No	2¼	12
1	2¼	12			No	2½	12
1	2½	12			(B)	3(C)	7
1	2½	10			Yes		7
1	2¼	12	2	12	Yes		7
1	2½	12	2¼	12	Yes		7
2	2½	10			Yes		7
2	2¼	12	2	12	Yes		7
2	2½	12	2¼	12	Yes		7
3 & 4	2½	12			Yes		7
3 & 4	2½	10			Yes		7
3 & 4	2½	12	2¼	12	Yes		7
3 & 4	2¼	12	2	12	Yes		7
3 & 4	2½	10	2¾ ₁₆	10	Yes		7

(B) - 2½" 12 gauge posts do not need breakaway bases unless support is placed in boggy, wet, or loose soil areas.

(C) - 3" anchor unit

Breakaway Coupler System for Perforated Tubes

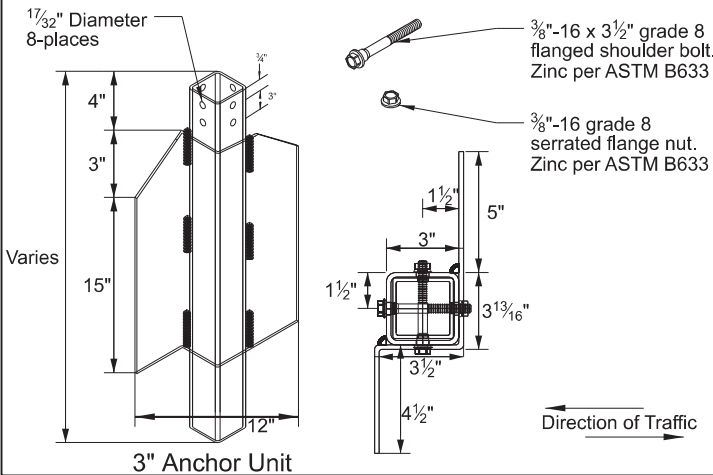


Section C-C

Max projection of the stub post is 4" above a 60" chord aligned radially to the center line of the highway and connecting any point, within the length of the chord, on the ground surface on one side of the support to a point in the ground surface on the other side.

Shoulder Bolt

Shimming agent to reduce tolerance between 3" anchor unit with 2½" post. (use of standard ¾" diameter grade 8 bolt allowed with proper shim)



NORTH DAKOTA
DEPARTMENT OF TRANSPORTATION

10-3-2013

REVISIONS

DATE	CHANGE
08-30-18	Updated notes to active voice.
08-30-19	New Design Engr PE Stamp.
08-05-24	Electronic Stamp/Signature.
07-22-25	Corrected "typo" in C-C note.

KIRK J. HOFF
REGISTERED
PROFESSIONAL
PE-4683
ENGINEER
NORTH DAKOTA

07/22/25