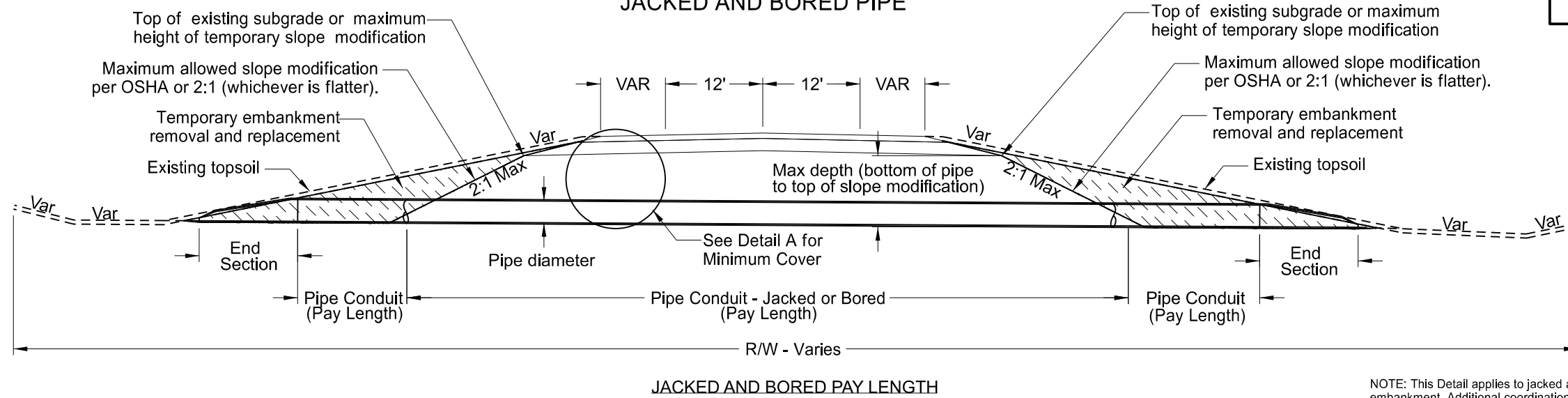
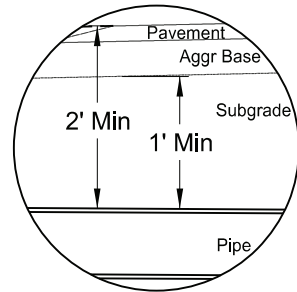


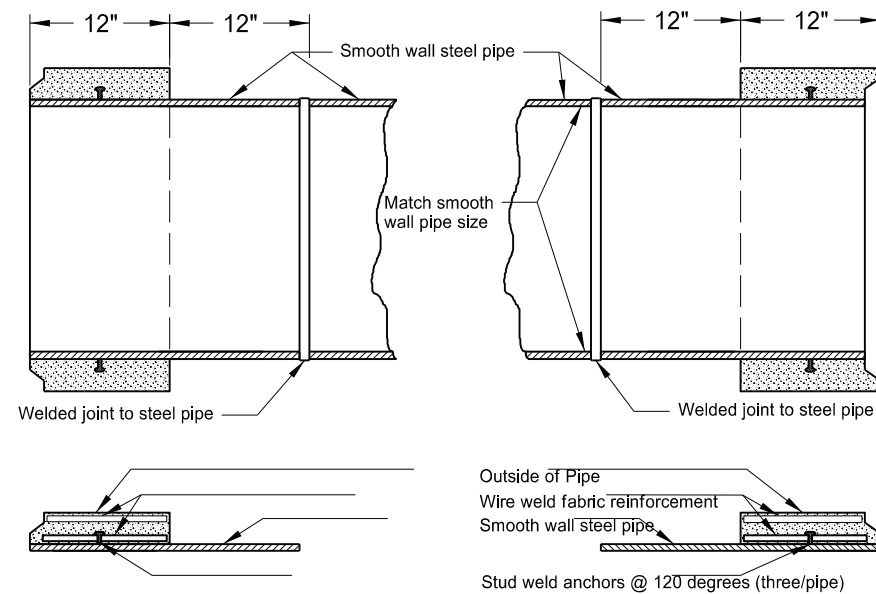
JACKED AND BORED PIPE



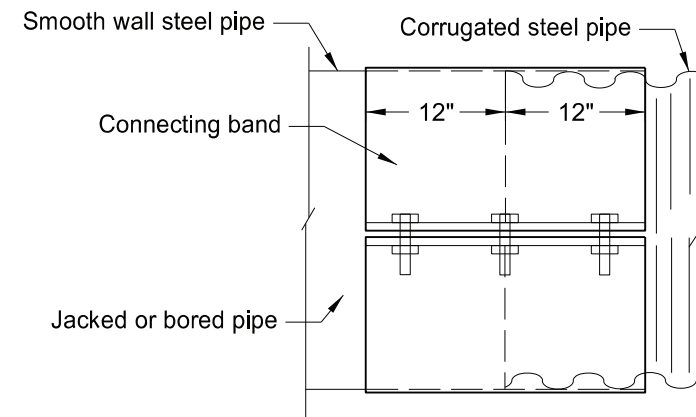
NOTE: This Detail applies to jacked and bored pipe under a roadway embankment. Additional coordination and design are needed for railroad embankments.



Detail A - Minimum Cover
2' Top of Pavement to Top of Pipe,
and 1' Top of Subgrade to Top of Pipe



DETAIL FOR JOINING SMOOTH WALL
STEEL PIPE TO REINFORCED CONCRETE PIPE



CONNECTING BAND FOR JOINING SMOOTH
WALL STEEL PIPE TO CORRUGATED PIPE

NORTH DAKOTA DEPARTMENT OF TRANSPORTATION	
07-15-2022	
REVISIONS	
DATE	CHANGE
08-31-2023	Corrected spelling of corrugated.



08/31/23