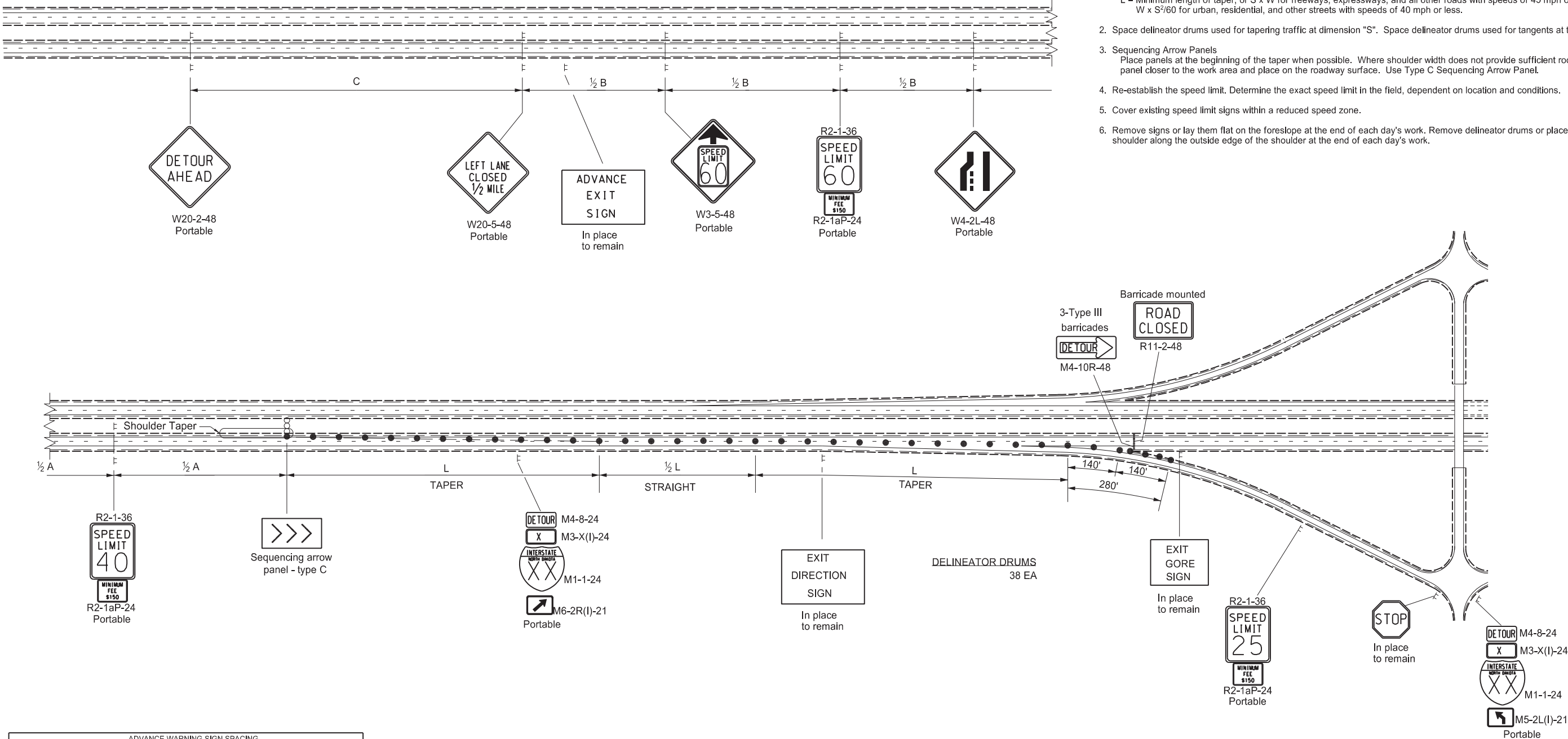


D-704-52

1. Variables
 - S = Numerical value of speed limit or 85th percentile prior to work starting.
 - W = The width of the taper.
 - L = Minimum length of taper, or $S \times W$ for freeways, expressways, and all other roads with speeds of 45 mph or greater, or $W \times S/60$ for urban, residential, and other streets with speeds of 40 mph or less.
2. Space delineator drums used for tapering traffic at dimension "S". Space delineator drums used for tangents at two times "S".
3. Sequencing Arrow Panels
 - Place panels at the beginning of the taper when possible. Where shoulder width does not provide sufficient room, move the panel closer to the work area and place on the roadway surface. Use Type C Sequencing Arrow Panel.
4. Re-establish the speed limit. Determine the exact speed limit in the field, dependent on location and conditions.
5. Cover existing speed limit signs within a reduced speed zone.
6. Remove signs or lay them flat on the foreslope at the end of each day's work. Remove delineator drums or place on the outside shoulder along the outside edge of the shoulder at the end of each day's work.



KEY	
	Sequencing arrow panel
	Type III barricade
	Sign
	Delineator drum

NORTH DAKOTA DEPARTMENT OF TRANSPORTATION	
09-05-12	
REVISIONS	
DATE	CHANGE
06-24-14	Updated sign sizes and added mounting type
03-15-16	Removed Do Not Pass signs and updated notes
11-01-19	Revised note, sign #, & del drums
08-02-24	Electronic Stamp/Signature
06-30-25	Legislative Changes

