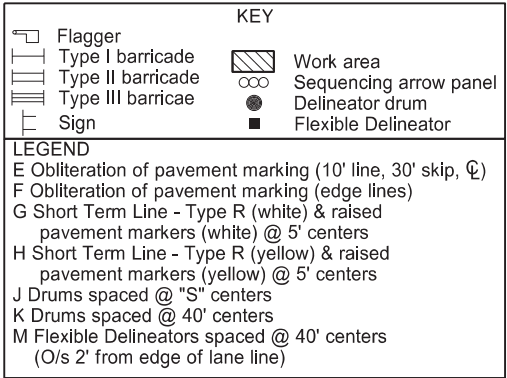
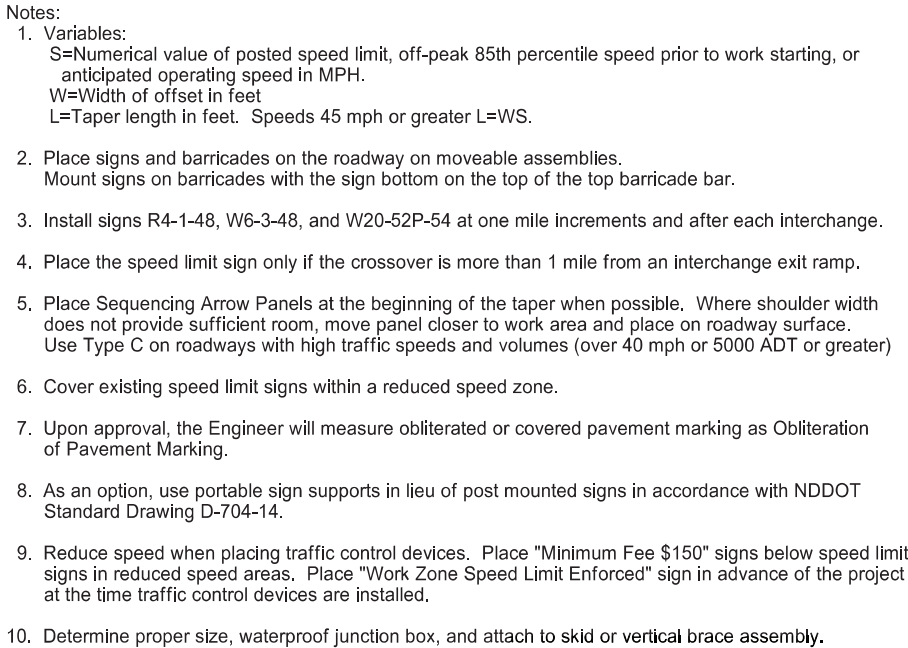


D-704-38



CROSSOVER TRAFFIC CONTROL QUANTITY SUMMARY 2/3							
		PRE-CONSTRUCTION SPEED LIMIT					
		55 MPH	60 MPH	65 MPH	70 MPH	75 MPH	80 MPH
ATTENUATION DEVICES	Ea	1 Type B-55	1 Type B-60	1 Type B-65	1 Type B-70	1 Type B-75	1 Type B-80
PORTABLE MEDIAN BARRIER	LF	220' (75' C-C Median), 214' (84' C-C Median), and 208' (104' C-C Median)					

NORTH DAKOTA	
DEPARTMENT OF TRANSPORTATION	
9-7-2012	
REVISIONS	
DATE	CHANGE
06-23-14	Revised Note 8
03-15-16	Removed Do Not Pass sign & updated notes
11-14-16	Revised attenuation width, termination area, & quantities
08-17-17	Updated note & quantities
11-01-19	Note, sign rfs, Del Drums update
12-08-21	Switched order of Road Work Ahead and Spd Limit Enforced & added Dollars At Work
12-20-23	Removed Dollars at Work sign, shortened x-over, revised tables
06-12-24	Pvmt Mgt Type/Quantity Update
06-30-25	Legislative Changes



Place conductor behind barricade away from traffic, tie at each barrier connection, and drape above the ground. Place conductors a minimum of 6" underground between the barrier and pole.

DETAIL "B"