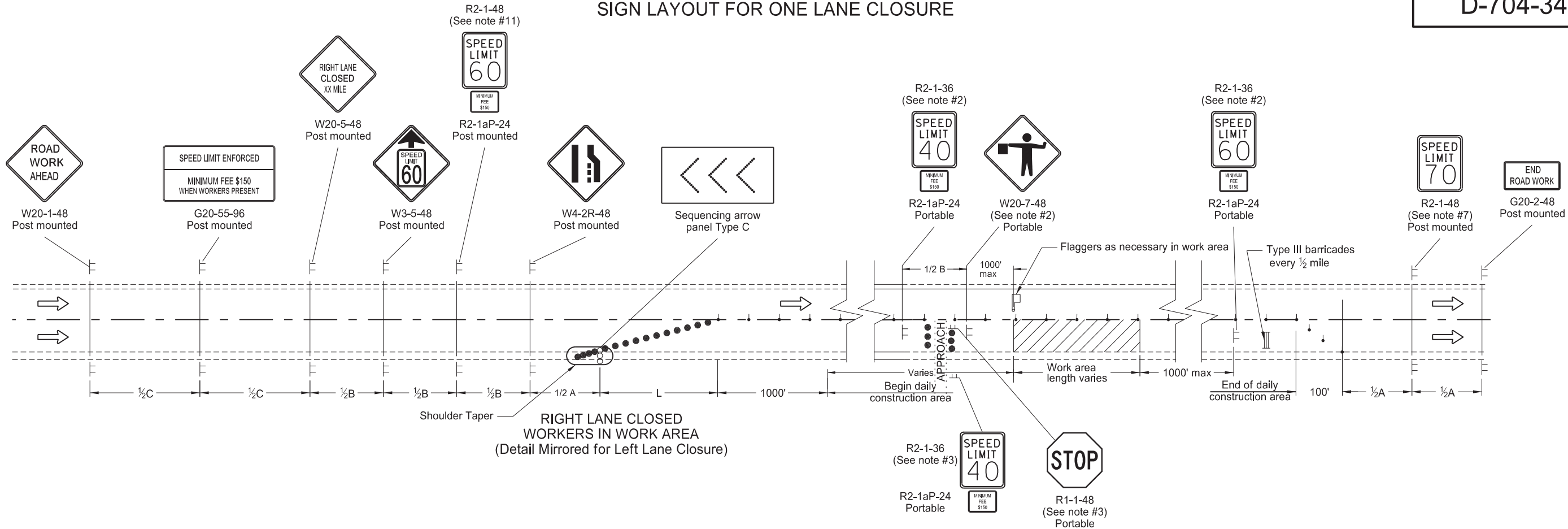


SIGN LAYOUT FOR ONE LANE CLOSURE

D-704-34



Notes:

1. Install advance signs for flagging when flaggers are flagging.
2. Move the advanced flagger sign and speed limit signs as the work area moves through the construction zone. When the work area is not visible from the flagger, move the flagger station so the work area is visible. Place the 40 mph speed limit sign at 1/2A in advance of the flagger sign and move the 60 mph speed limit sign. Cover or remove the 40 mph speed limit and the Minimum Fee \$150 signs upon completion of the work day or when workers are not present. Determine the exact speed limit in the field, dependent on location and conditions.
3. Approaches: When the work area encompasses an approach, install a 40 mph speed limit sign to control the approach. Cover the existing stop sign and install a new portable stop sign when the approach is on the side of the lane closure. Remove the approach speed limit sign once the main line 40 mph speed zone is moved past the approach.
4. Variables:
  - S=Numerical value of speed limit or 85th percentile
  - W=The width of taper.
  - L=Minimum length of taper, or SxW for freeways, expressways, and all other roads with speeds of 45 mph or greater, or (WxSxS)/60 for urban, residential, and other streets with speeds of 40 mph or less.
5. Space delineator drums for tapering traffic at the dimension "S". Space tubular markers used for tangents at 2 times dimension "S".
6. Place sequencing arrow panels at the beginning of the taper when possible. Where shoulder width does not provide sufficient room, move the panel closer to the work area and place on the roadway surface.
  - Use Type A on roadways with slow moving traffic speeds and low volume (25 mph or less and 750 ADT or less).
  - Use Type B on roadways with moderate traffic speeds and volumes (40 mph or less and 5000 ADT or less).
  - Use Type C on roadways with high traffic speeds and volumes (over 40 mph or over 5000 ADT).
7. Re-establish the speed limit. Determine the exact speed limit in the field, dependent on location and conditions.
8. Cover existing speed limit signs within a reduced speed zone.
9. Install flags on warning signs in urban areas when signs are not portable. Mount 24 inch square flags perpendicular to the edges of the diamond sign, and at such a distance above the edge that the flag does not touch the sign when limp.
10. Determine the reduced speed limit dependent on the in place speed limit before construction. Where speed limits are to be reduced more than 30 mph, install a second speed limit sign with the desired speed reduction (not to exceed 30 mph.) Place the second speed limit sign at 1/2B.
11. As an option use portable sign supports in lieu of post mounted signs in accordance with NDDOT Standard Drawing D-704-14.
12. Sign G20-55-96 is not required if this layout is part of other traffic control that contains this sign, or the work is less than 15 days.

KEY	
	Type I barricade
	Type II barricade
	Type III barricade
	Sign
	Delineator drum
	Work area
	Flagger
	Sequencing arrow panel
	Tubular markers

ADVANCE WARNING SIGN SPACING			
Road Type	Distance Between Signs Min (ft)		
	A	B	C
Urban - Low Speed (30 mph or less)	150	150	150
Urban - Low Speed (over 30 to 40 mph)	280	280	280
Urban - High Speed (over 40 mph to 50 mph)	360	360	360
Rural - High Speed (over 50 mph to 65 mph)	720	720	720
Urban Expressway and Freeway (55 mph to 60 mph)	850	1350	2200
Rural Expressway and Freeway (70 mph to 80 mph)	1000	1500	2640
Interstate/4-Lane Divided (Maintenance and Surveying)	750	1000	1500

NORTH DAKOTA DEPARTMENT OF TRANSPORTATION	
9-26-2012	
REVISIONS	
DATE	CHANGE
03-15-16	Removed Do Not Pass signs & updated notes
08-17-17	Updated notes & sign numbers & moved Speed Limit signs
11-01-19	Removed shldr taper details & revised tubular mkr symbol
12-08-21	Switched order of Road Work and Spd Limit Enforced, removed table, & added Dollars At Work
11-29-22 06-30-25	Removed Dollars At Work Legislative Changes

