

Two-Lane Roadway Portable Rumble Strips

D-704-33

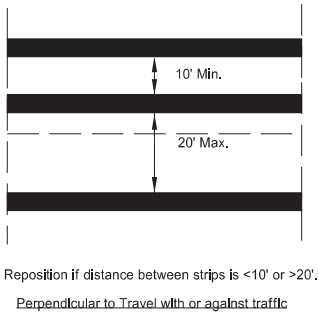
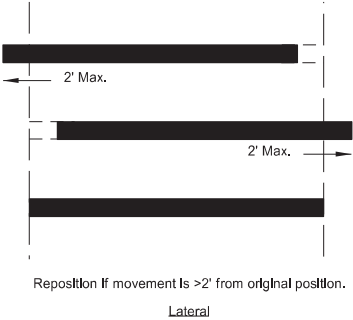
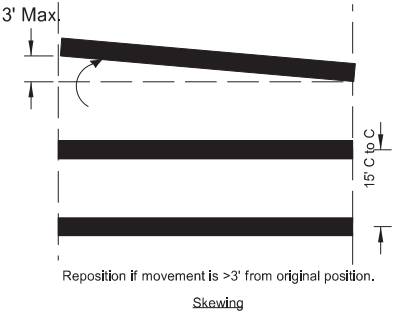
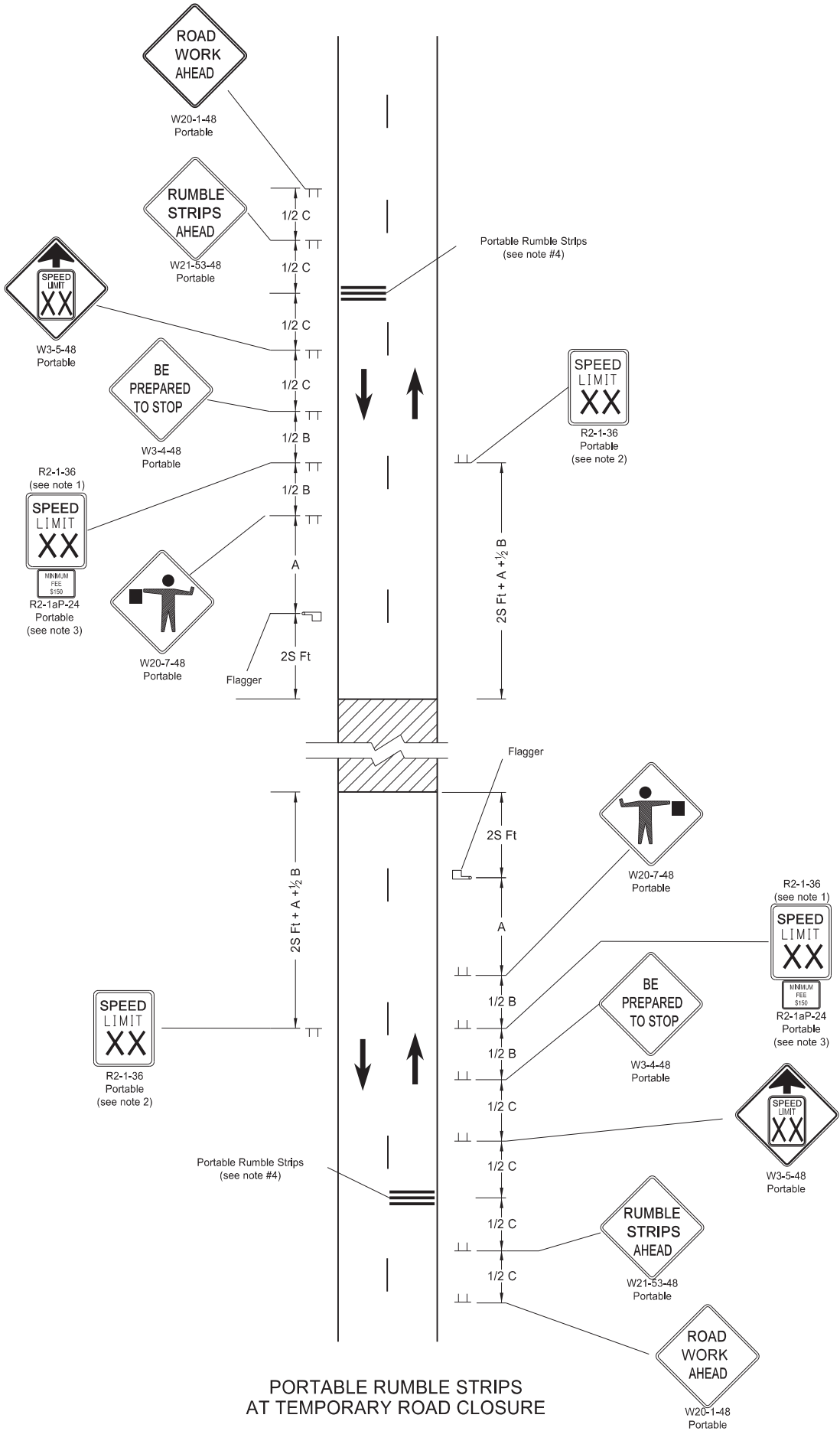
Work area

Flagger

Sign

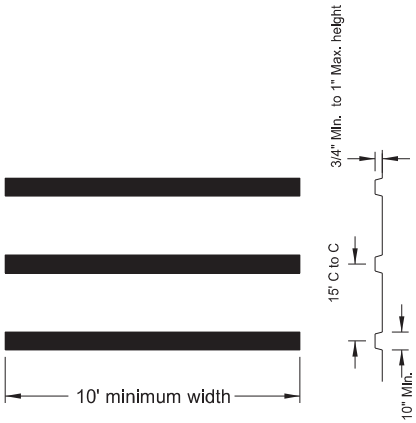
S = Numerical value of speed limit or 85th percentile.

ADVANCE WARNING SIGN SPACING			
Road Type	Distance Between Signs Min. (ft)		
	A	B	C
Urban - High Speed (over 45 mph to 50 mph)	360	360	360
Rural - High Speed (over 50 mph to 65 mph)	720	720	720



PORTABLE RUMBLE STRIPS ARRAY  
TYPES OF MOVEMENT AND MAXIMUM ALLOWANCES

- Notes:
- Determine speed in the field based on location and conditions.
  - Re-establish the speed limit. Determine the exact speed limit in the field, dependent on location and conditions.
  - Sign R2-1aP-24 is not required when pilot car operation is used.
  - Do not use rumble strips on a non paved surface or in a pre-construction speed zone of 45 mph or less.



PORTABLE RUMBLE STRIPS ARRAY DETAIL

PORTABLE RUMBLE STRIPS  
AT TEMPORARY ROAD CLOSURE

NORTH DAKOTA  
DEPARTMENT OF TRANSPORTATION

02-22-22

REVISIONS

DATE	CHANGE
03-07-23	Use changed to min 45 mph
06-30-25	Legislative Changes

KIRK J. HOFF  
REGISTERED  
PROFESSIONAL  
PE-4683  
06/30/25  
ENGINEER  
NORTH DAKOTA