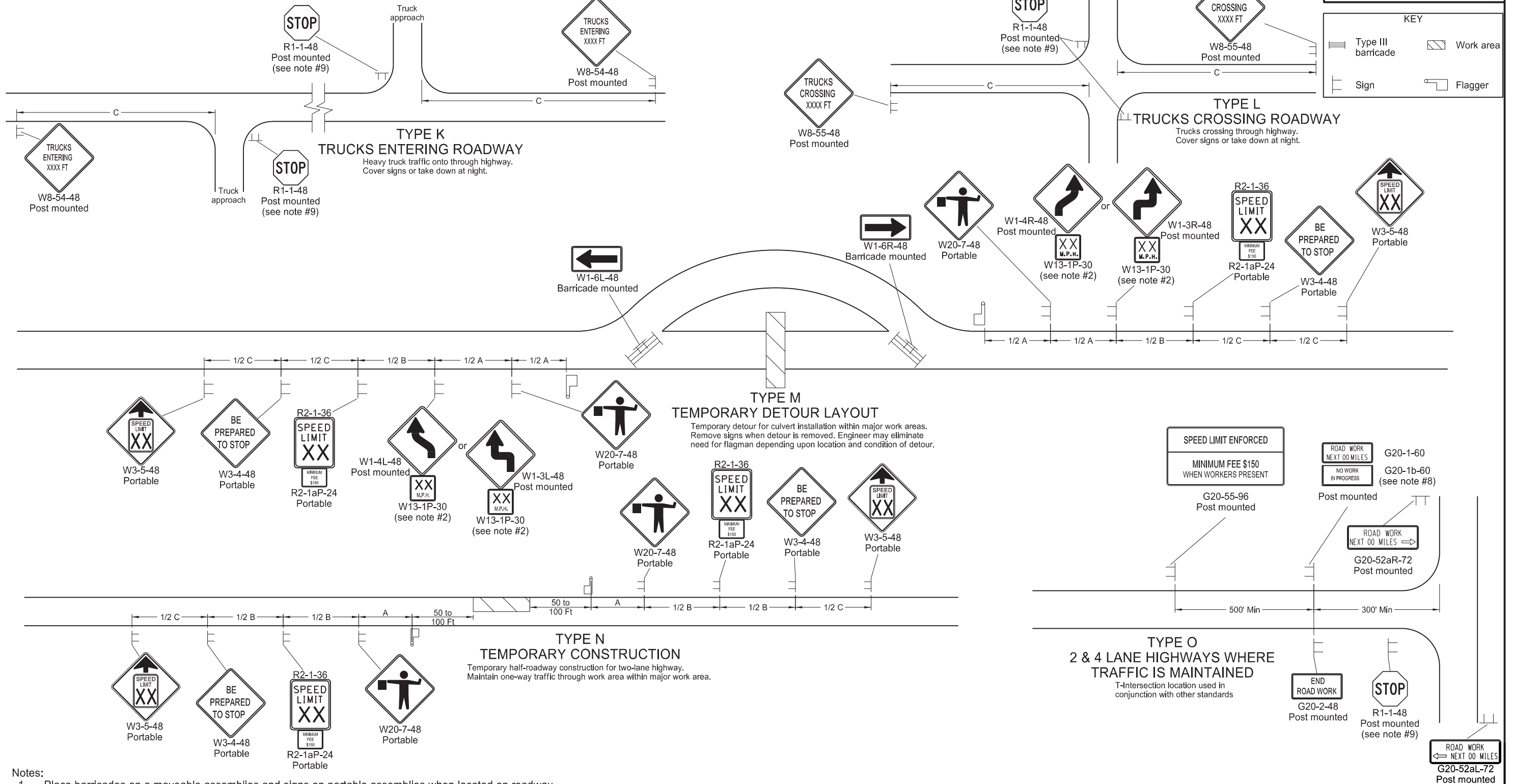


CONSTRUCTION TRUCK AND TEMPORARY DETOUR LAYOUTS

D-704-22



Notes:

1. Place barricades on a moveable assemblies and signs on portable assemblies when located on roadway.
2. Where necessary, safe speed to be determined by the Engineer.
3. Determine the reduced speed limit based on the in-place speed limit before construction. Where speed reductions exceed 30 mph, install a second speed limit sign with the desired speed reduction (not to exceed 30 mph.) Place the second speed limit sign at ½ B.
4. Install flags on warning signs in urban areas when signs are not portable. Mount 24 inch square flags perpendicular to the edges of the sign, and at such a distance above the edge that the flag does not touch the sign when limp.
5. Cover existing speed limit signs within a reduced speed zone.
6. Covered (when approved by engineer) or obliterated pavement marking measured as Obliteration of Pavement Marking.
7. As an option, use portable sign supports in lieu of post mounted signs in accordance with NDDOT Standard Drawing D-704-14.
8. Install sign G20-1b-60 when work is suspended for winter.
9. If existing stop sign is in place, a 48" stop sign is not required.
10. Sign G20-55-96 is not required if layout is part of other traffic control that contains this sign, or if work is less than 15 days.
11. Recommend using 40 mph speed limit in vicinity of workers, unless location and conditions dictate otherwise.

ADVANCE WARNING SIGN SPACING			
Road Type	Distance Between Signs Min. (ft)		
	A	B	C
Urban - Low Speed (30 mph or less)	150	150	150
Urban - Low Speed (over 30 to 40mph)	280	280	280
Urban - High Speed (over 40 mph to 50 mph)	360	360	360
Rural - High Speed (over 50 mph to 65 mph)	720	720	720
Urban Expressway and Freeway (55 mph to 60 mph)	850	1350	2200
Rural Expressway and Freeway (70 mph to 80 mph)	1000	1500	2640
Interstate/4-Lane Divided (Maintenance and Surveying)	750	1000	1500

NORTH DAKOTA DEPARTMENT OF TRANSPORTATION	
9-27-13	
REVISIONS	
DATE	CHANGE
08-17-17 11-01-19 12-09-21	Update notes & sign numbers Revised sign numbers & note Added Speed Limit Enforced and Dollars At Work signs
11-29-22 06-30-25	Removed Dollars At Work Legislative Changes

