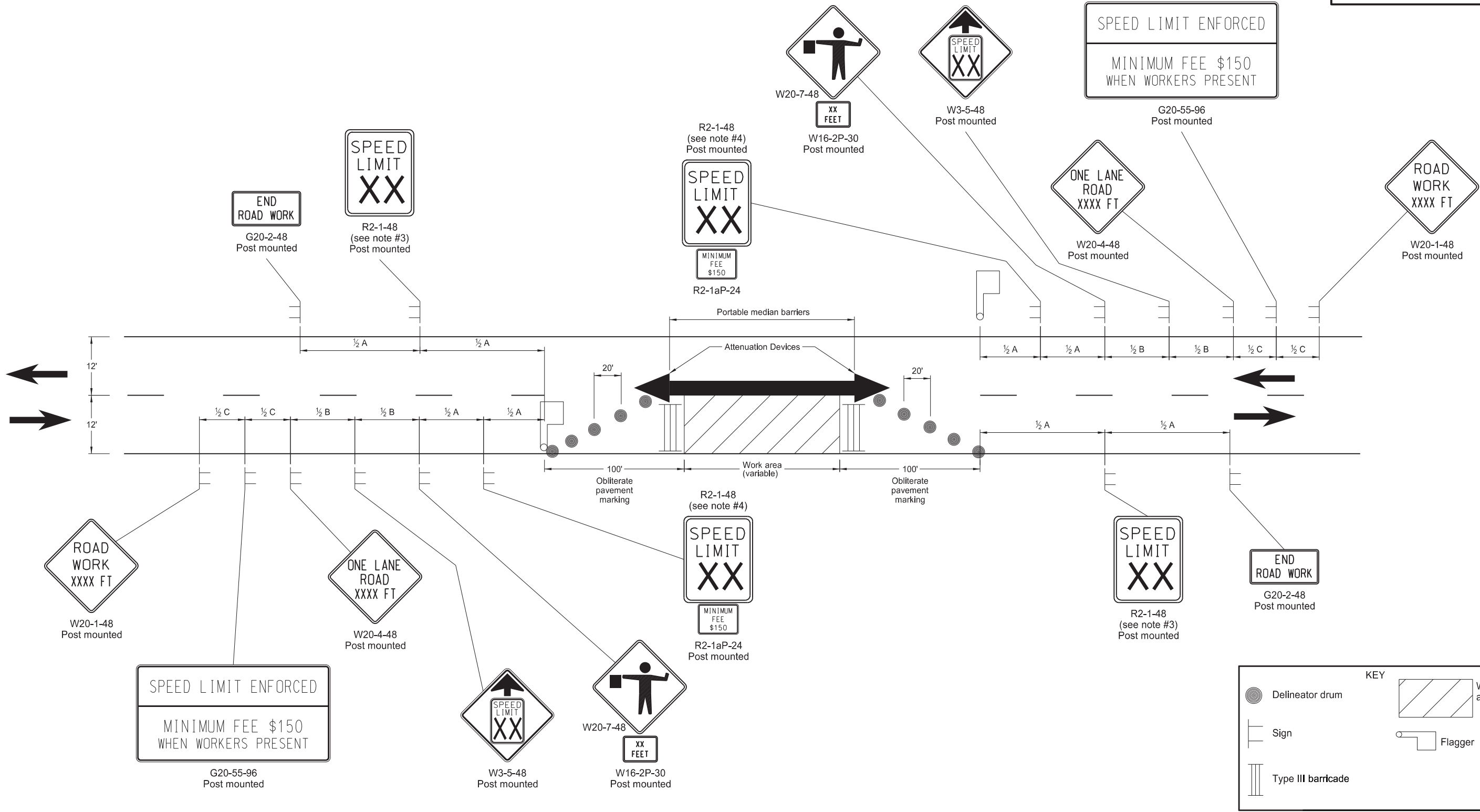


SIGN LAYOUT FOR ONE LANE CLOSURE TWO LANE ROADWAY

D-704-17



Notes:

1. Place barricades on moveable assemblies and signs on portable assemblies when located on roadway.
2. Remove existing striping as required. Use back to back delineators when inslope is 4:1 or flatter and roadway alignment is visible to approaching vehicles. Place back to back vertical panels when roadways have steep slopes and alignment is not visible to approaching traffic.
3. Re-establish speed limit. Determine exact speed limit in the field, dependent on location and conditions.
4. Determine the reduced speed limit based on the in-place speed limit before construction. Where speed reductions exceed 30 MPH, install a second speed limit sign with the desired speed reduction (not to exceed 30 MPH.) Place the second speed limit sign at 1/2B.
5. Install flags on warning signs in urban areas when signs are not portable. Mount 24 inch square flags perpendicular to the edges of the sign, and at such a distance above the edge that the flag does not touch the sign when limp.
6. As an option, use portable sign supports in lieu of post mounted signs in accordance with NDDOT Standard Drawing D-704-14.
7. Cover existing speed limit signs within a reduced speed zone.
8. Sign G20-55-96 is not required if this layout is part of other traffic control that contains this sign, or if work is less than 15 days.
9. Recommend using 40 mph speed limit in vicinity of workers, unless location and conditions dictate otherwise.

| ADVANCE WARNING SIGN SPACING                          |                                  |      |      |
|---|----------------------------------|------|------|
| Road Type   | Distance Between Signs Min. (ft) |      |      |
|   | A                                | B    | C    |
| Urban - Low Speed (30 mph or less)                    | 150                              | 150  | 150  |
| Urban - Low Speed (over 30 to 40 mph)                 | 280                              | 280  | 280  |
| Urban - High Speed (over 40 mph to 50 mph)            | 360                              | 360  | 360  |
| Rural - High Speed (over 50 mph to 65 mph)            | 720                              | 720  | 720  |
| Urban Expressway and Freeway (55 mph to 60 mph)       | 850                              | 1350 | 2200 |
| Rural Expressway and Freeway (70 mph to 80 mph)       | 1000                             | 1500 | 2640 |
| Interstate/4-Lane Divided (Maintenance and Surveying) | 750                              | 1000 | 1500 |

| NORTH DAKOTA<br>DEPARTMENT OF TRANSPORTATION |   |
|--|---|
| 9-27-13                                      |   |
| REVISIONS                                    |   |
| DATE   | CHANGE  |
| 08-17-17                                     | Note update & sign numbers  |
| 11-01-19                                     | Removed signs & revised note  |
| 12-08-21                                     | Switched order of Road Work XXXX and Spd Limit Enforced & added Dollars At Work |
| 11-29-22                                     | Removed Dollars At Work   |
| 08-21-24                                     | Pvmt Mkg Width & Med Barrier  |
| 06-30-25                                     | Legislative Changes   |

