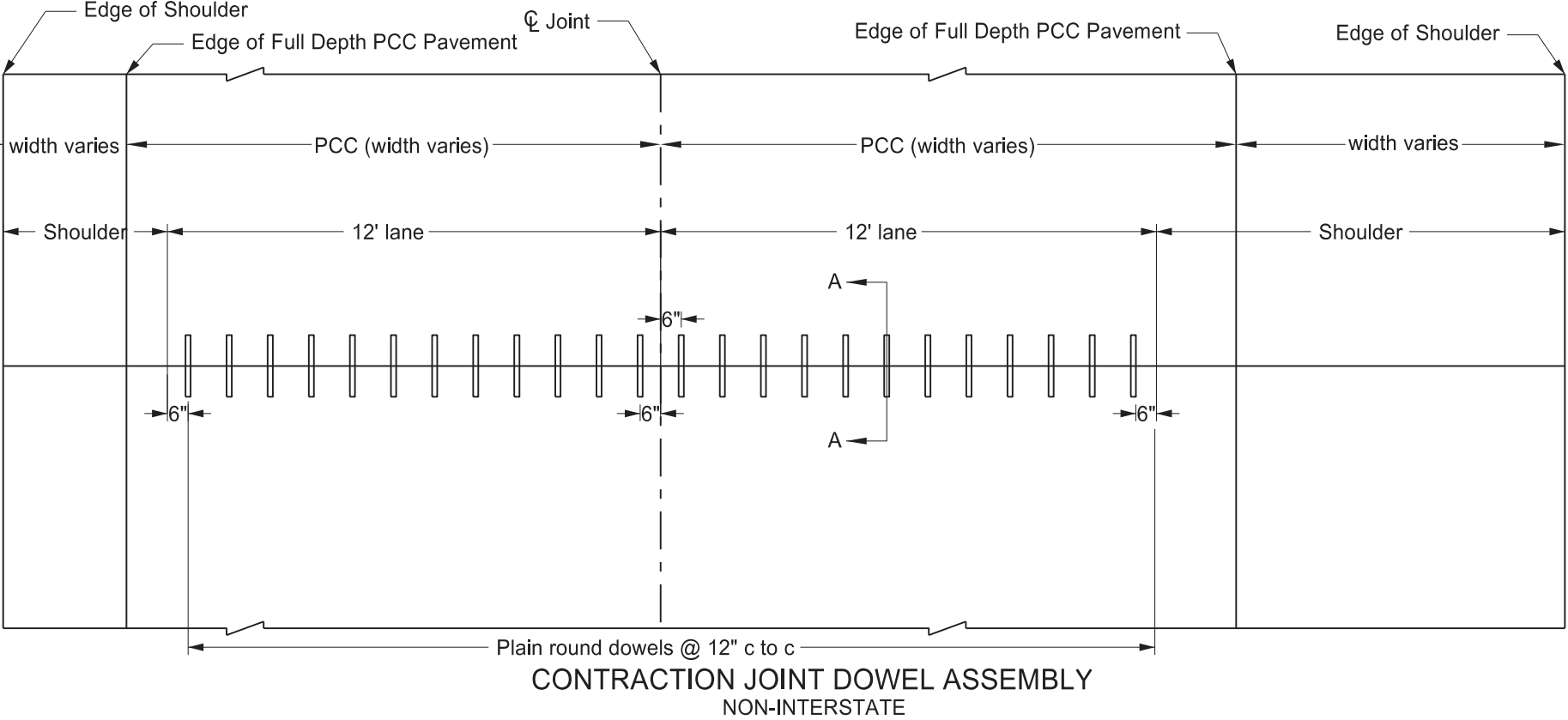
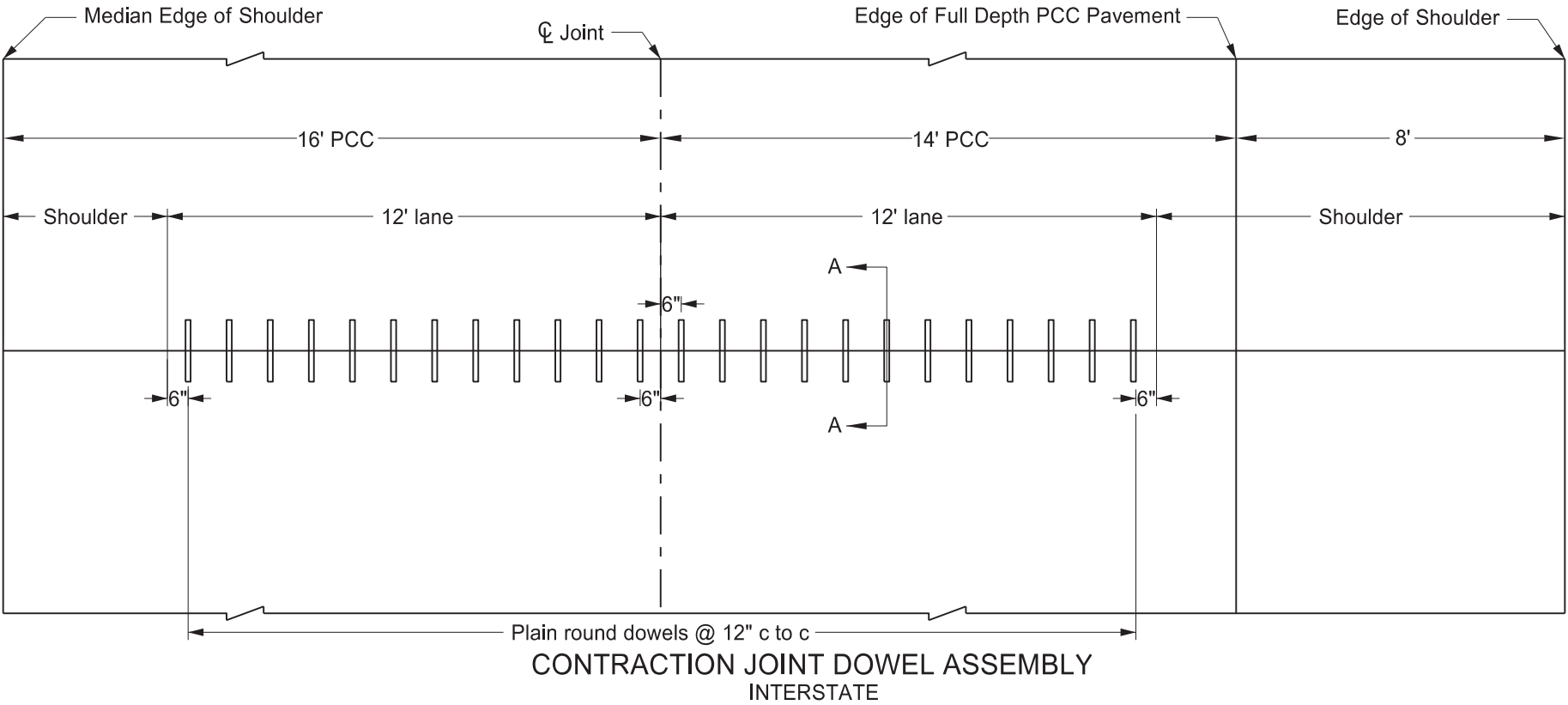
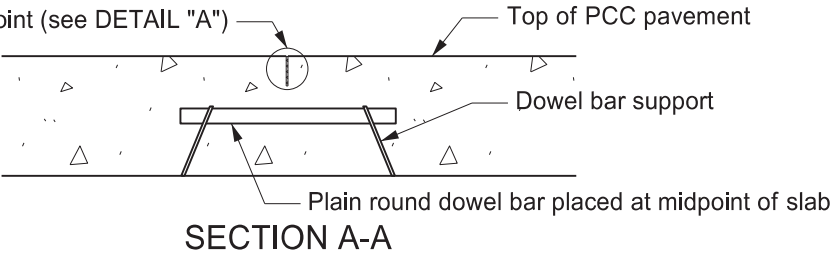
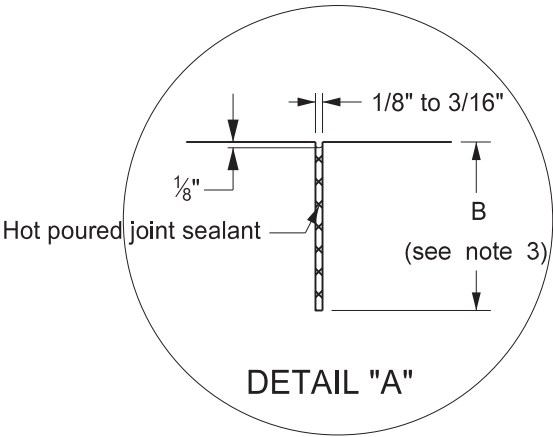


TRANSVERSE CONTRACTION JOINT DETAILS

Notes

1. The joint seal details apply to both doweled and non-doweled (plain) transverse joints.
2. T = Thickness of pavement.
3.  $B = T/4 + \frac{1}{4}"$  for AE or non-doweled concrete pavement or  
 $B = T/3$  for AAE or doweled concrete pavement



NORTH DAKOTA DEPARTMENT OF TRANSPORTATION	
9-15-10	
REVISIONS	
DATE	CHANGE
6/23/2014	Removed dowel size reference
3/16/2016	Revised Joint Details and notes
10/25/2019	Expanded Details for clarity
03/13/2025	Revised # of Dowels & Note 3.

KIRK J. HOFF  
REGISTERED  
PE-4683  
ENGINEER  
NORTH DAKOTA

03/13/25