

MEDORA BUSINESS LOOP AND CITY SECTION PROJECT

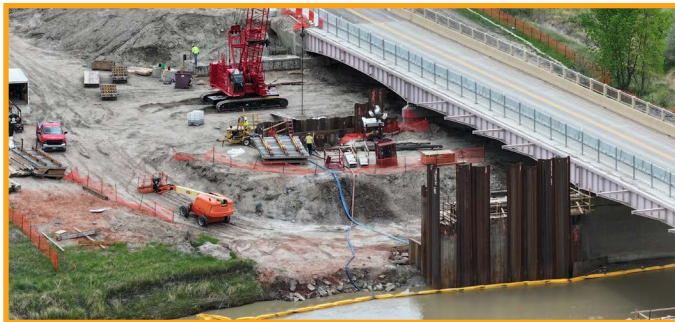
SPRING/SUMMER 2025 CONSTRUCTION UPDATES

Work on the Medora Business Loop and City Section project began in fall 2024 and will continue through summer 2026, bringing much-needed improvements to safety, traffic flow, and pedestrian access along Pacific Avenue (I-94 Business Loop) between exits 24 and 27.



PROJECT PROGRESS

Crews have widened Pacific Avenue from Chimney Park Road to Pool Drive. Traffic has shifted to the southbound portion of the widenings, allowing construction on the north side of the Little Missouri Bridge. Work will continue on both the bridge and the roundabout at Chateau Road throughout the summer.



UPCOMING TRAFFIC PATTERN SHIFT

Traffic from Pacific Avenue and Chateau Road is now being routed through the two north side lanes of the new roundabout. This change is necessary to maintain east-west access while construction continues on the roundabout's south side.



SUMMER TOURIST SEASON

Crews are working with the City of Medora to maintain safe traffic flow throughout the summer. Pavement markings are being updated at Chateau Road and traffic control measures are in place to accommodate larger vehicles.

To minimize disruption during peak tourist season, work will not take place in the city center from May 22 to September 3, 2025.

MORE QUESTIONS?

Stay updated through this project's dedicated [webpage](#) or contact:

Heather Brew, NDDOT Transportation Construction Administrator | hbrew@nd.gov
 Mike Njos, Project Engineer, Civil Science | [mnjos@civilscience.com](mailto:mnj@civilscience.com)