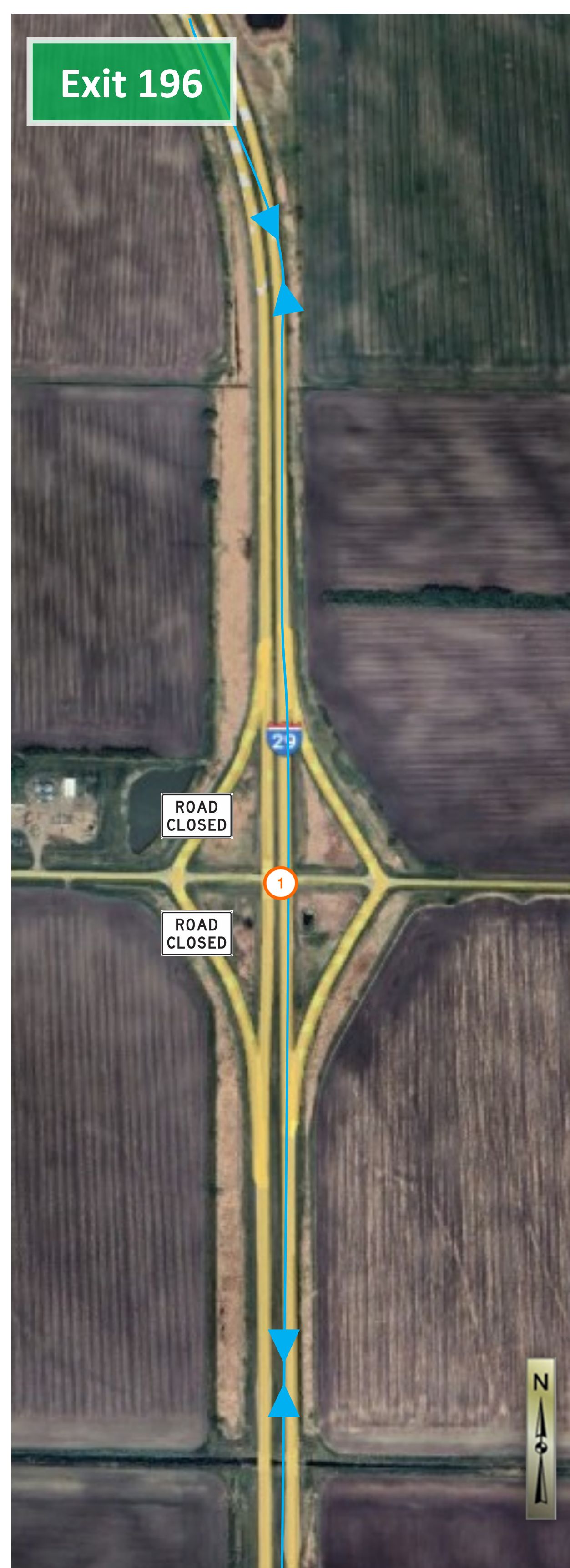


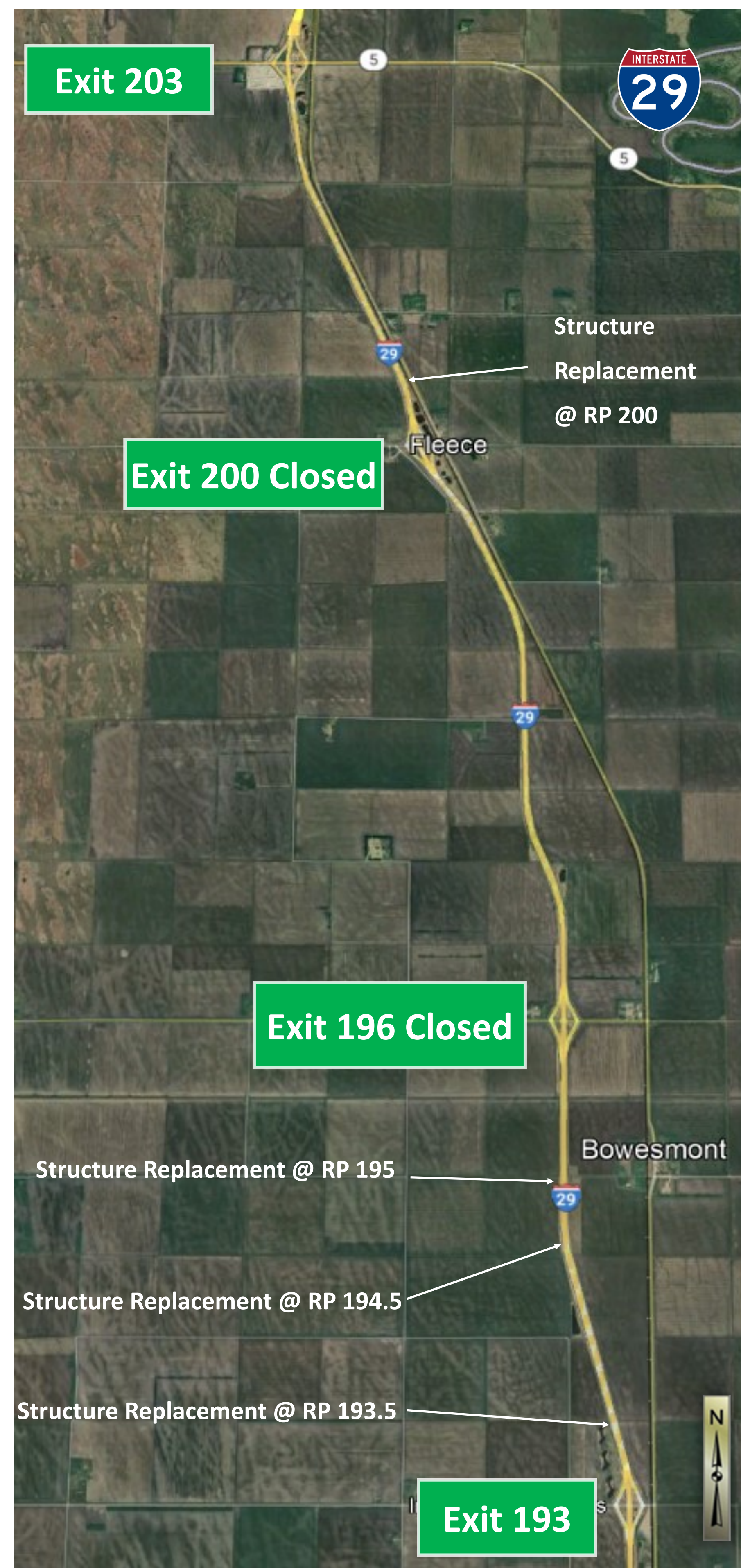


**Detour plan for interstate traffic @
Exit 193**



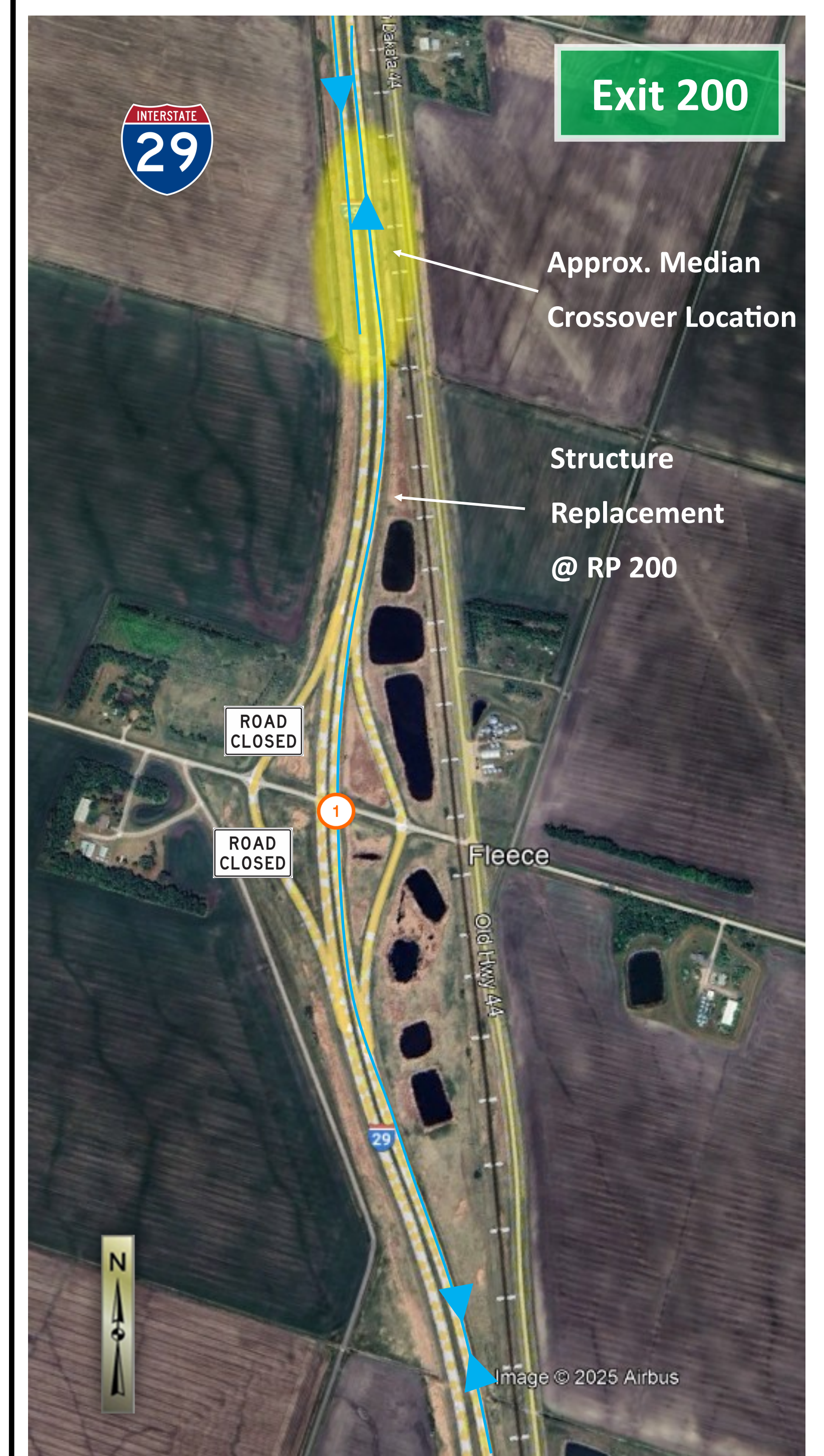
1 Interstate traffic will be maintained on Northbound lanes of I-29 while the Southbound is under construction. Ramps on the Southbound lanes will be closed. Ramps on the Northbound lanes will remain open.

**Detour plan for interstate traffic @
Exit 196**



- Interstate traffic travelling southbound will not be able to use the southbound ramps on Exit 196 or 200. If they wish to exit they must use Exit 193 to get on the northbound lanes and use the northbound ramps at Exit 196 or 200.

Detour Plan



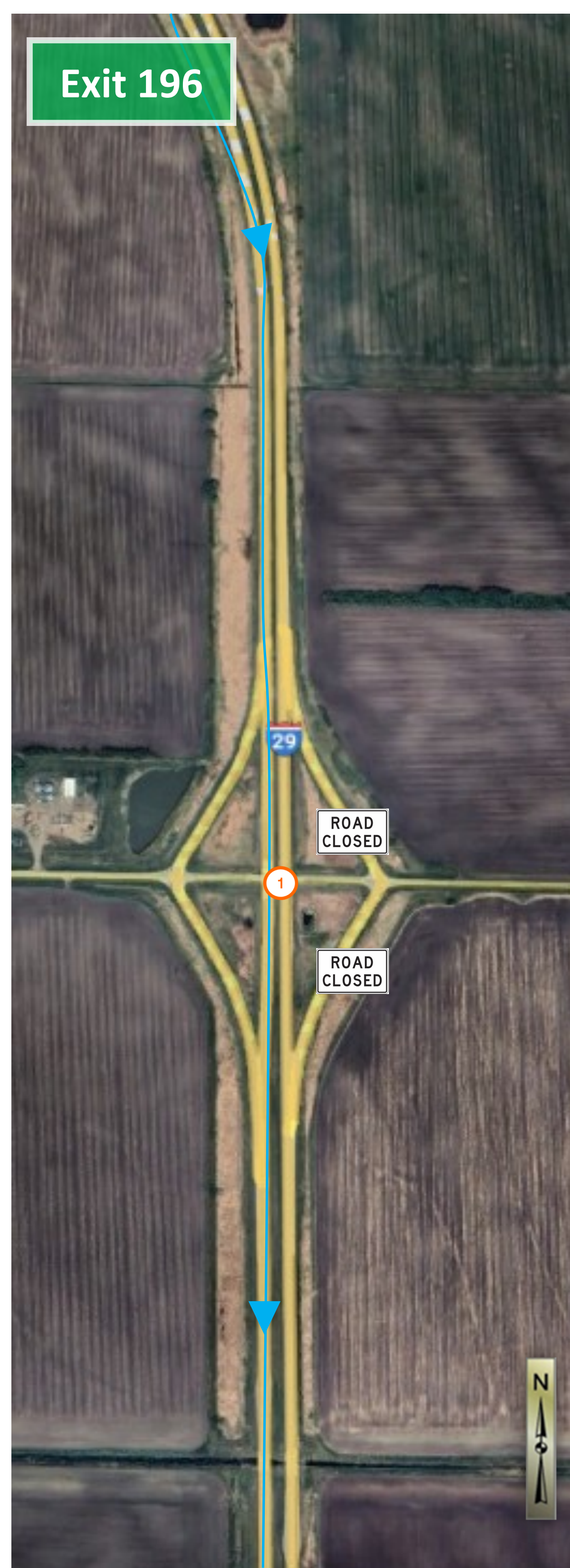
1 Interstate traffic will be maintained on Northbound lanes of I-29 while the Southbound is under construction. Ramps on the Southbound lanes will be closed. Ramps on the Northbound lanes will remain open.

**Traffic control plan for interstate traffic @
Exit 200**

EXHIBIT 2A
**WORK ZONE TRAFFIC CONTROL - DETOUR
ROUTES**
**FOR CONSTRUCTION ON SOUTHBOUND LANES
I-29 STRUCTURE REPLACEMENTS**

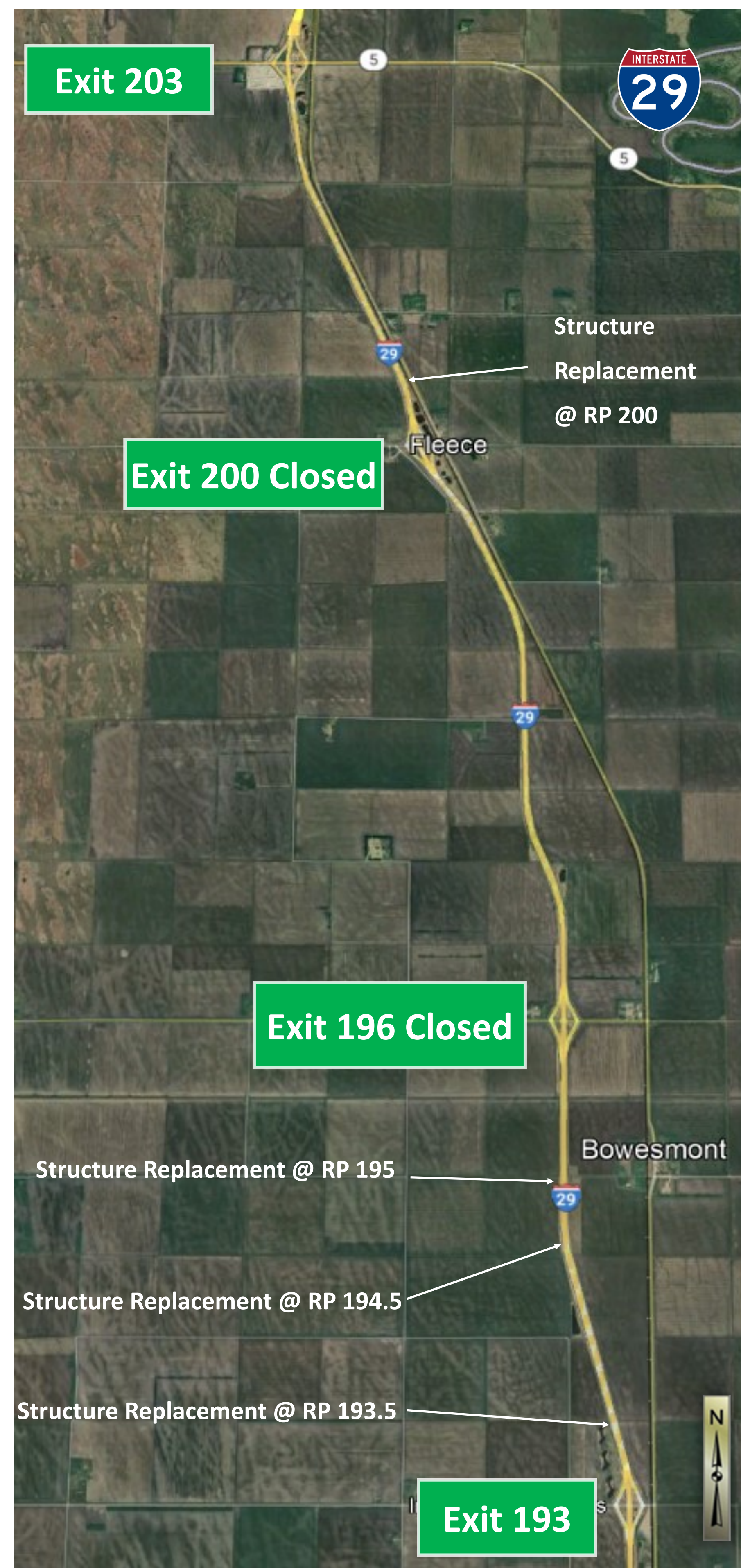


Detour plan for interstate traffic @ Exit 193



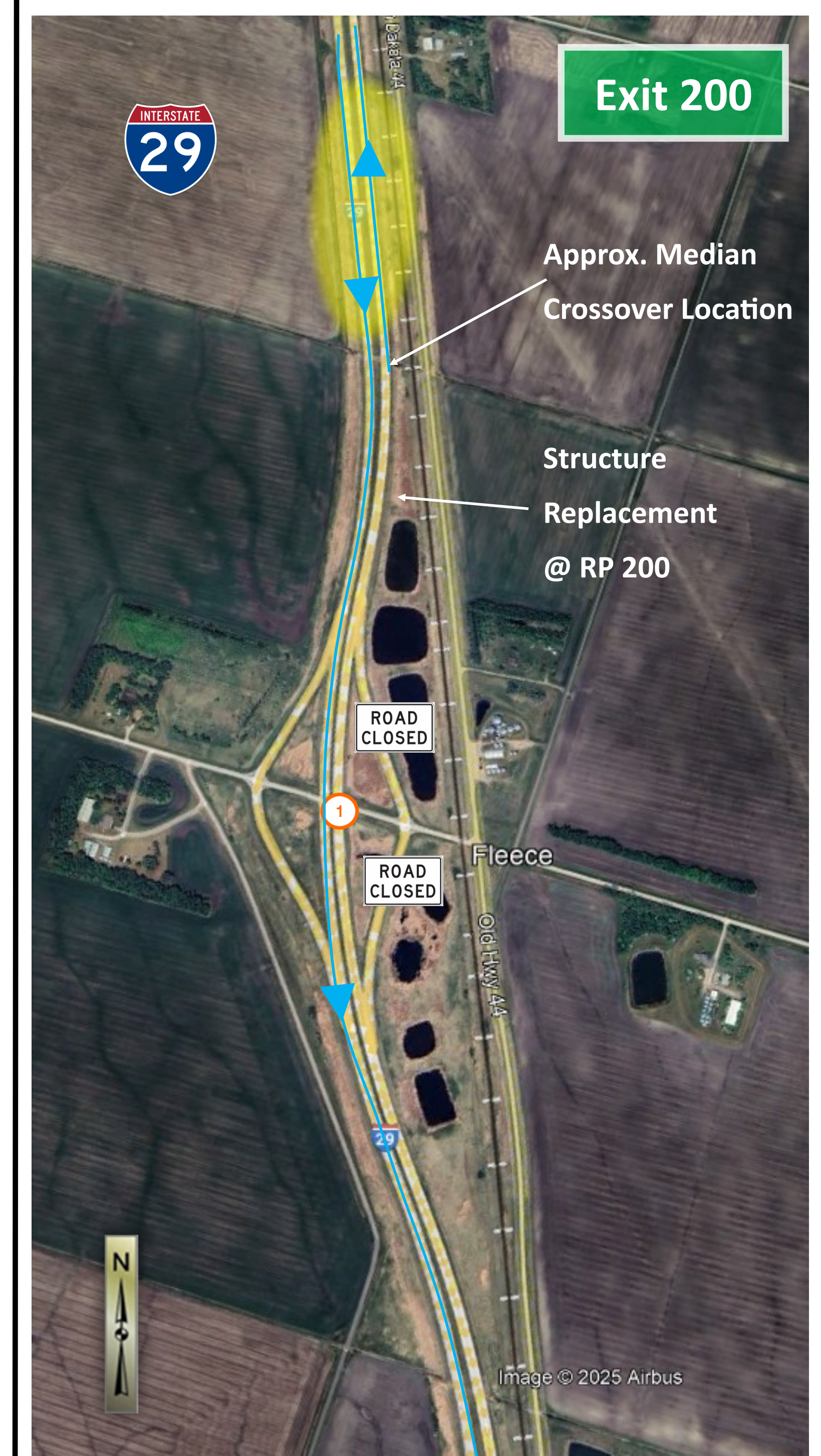
1 Interstate traffic will be maintained on Southbound lanes of I-29 while the Northbound is under construction. Ramps on the Northbound lanes will be closed. Ramps on the Southbound lanes will remain open.

Detour plan for interstate traffic @ Exit 196



• Interstate traffic travelling northbound will not be able to use the northbound ramps on Exit 196 or 200. If they wish to exit they must use Exit 203 to get on the southbound lanes and use the southbound ramps at Exit 196 or 200.

Detour Plan



1 Interstate traffic will be maintained on Southbound lanes of I-29 while the Northbound is under construction. Ramps on the Northbound lanes will be closed. Ramps on the Southbound lanes will remain open.

Traffic control plan for interstate traffic @ Exit 200

EXHIBIT 2B
WORK ZONE TRAFFIC CONTROL - DETOUR ROUTES
FOR CONSTRUCTION ON NORTHBOUND LANES
I-29 STRUCTURE REPLACEMENTS