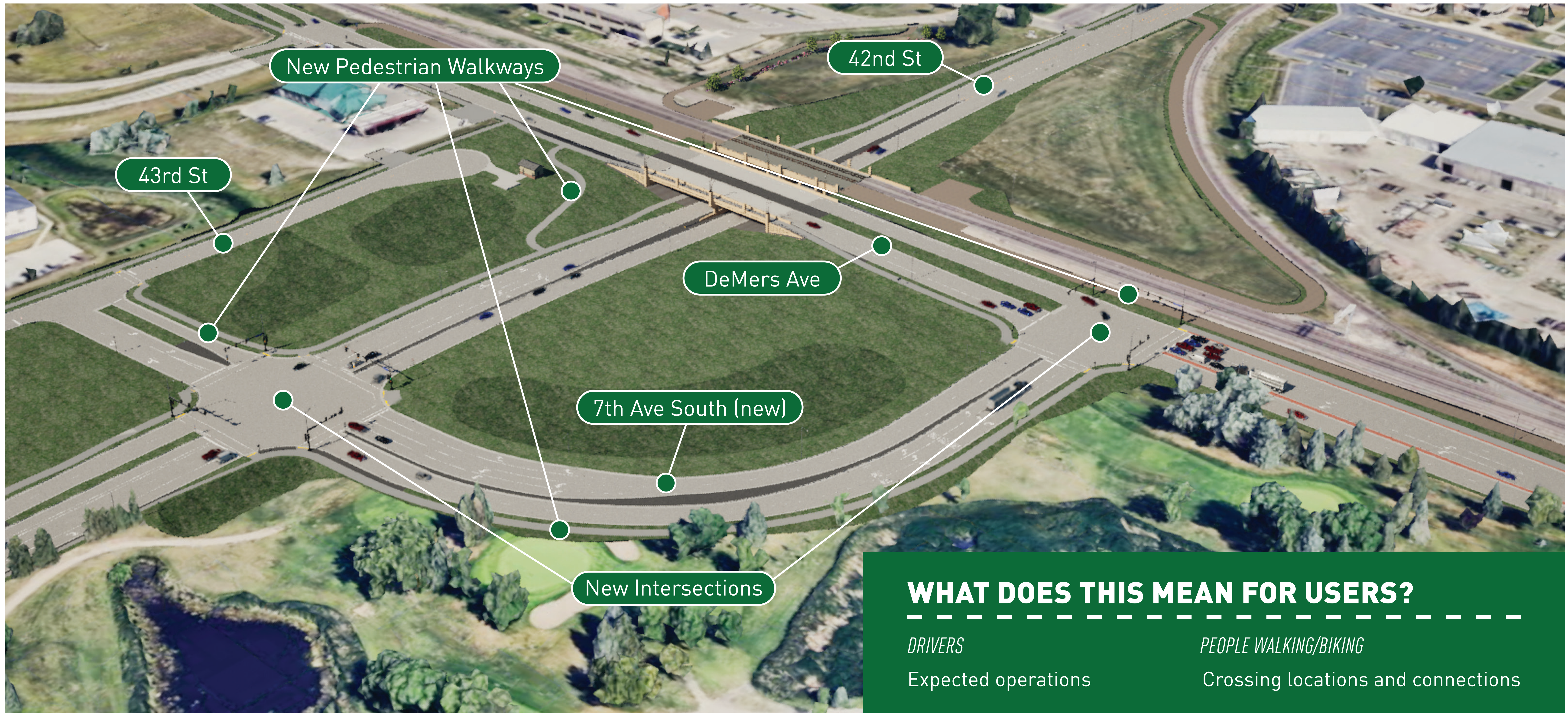


FINAL DESIGN AND LAYOUT



FINAL DESIGN PLAN VIEW



WHAT DOES THIS MEAN FOR USERS?

DRIVERS

Expected operations

PEOPLE WALKING/BIKING

Crossing locations and connections

LEARN MORE BY VISITING: www.dot.nd.gov/42nd-street-demers-avenue-underpass

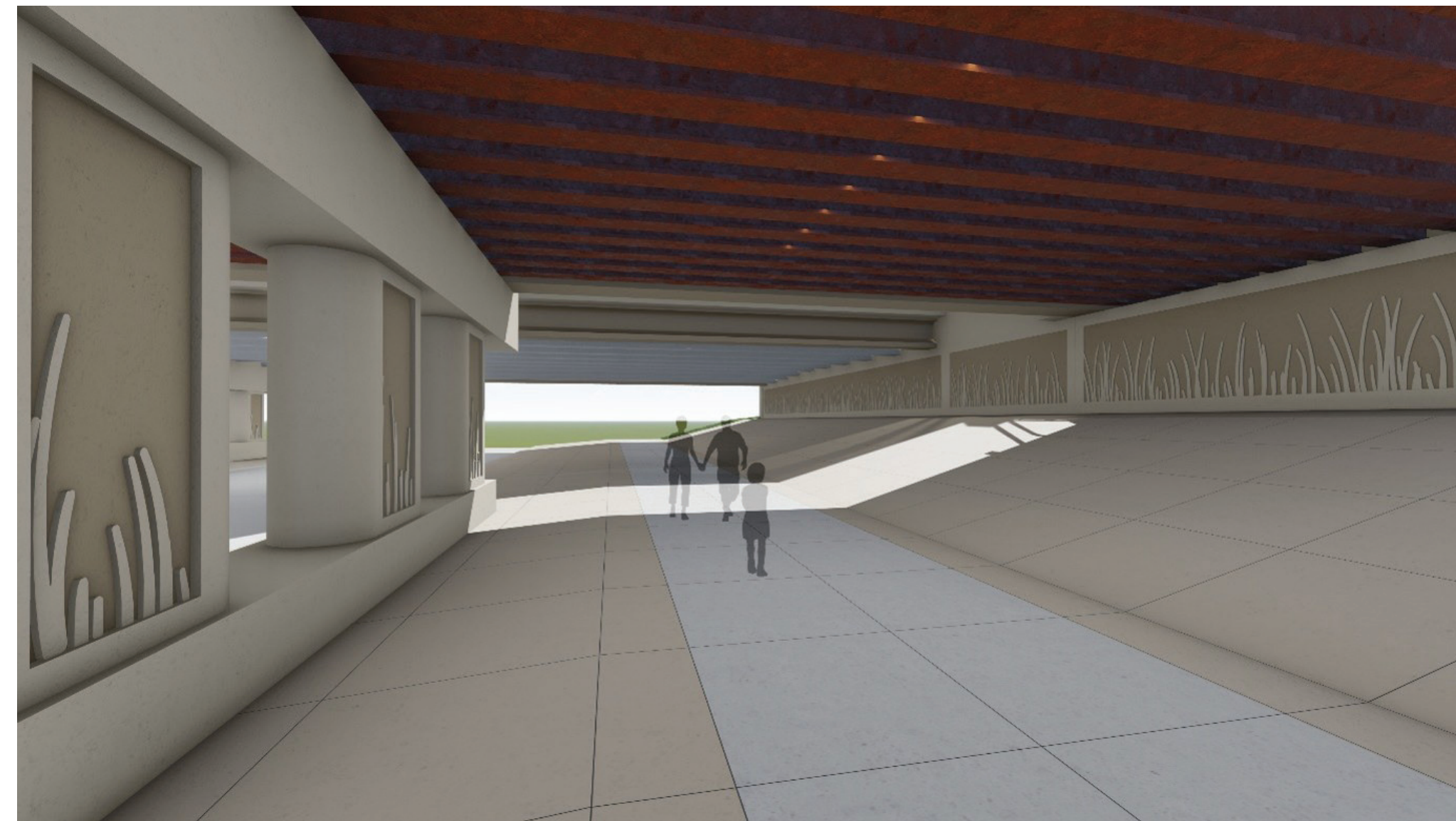
AESTHETICS AND PLACEMAKING



DECORATIVE FENCING/LIGHTING

PAINTED/PATTERNED CONCRETE

MULTI-MODAL CONNECTIONS



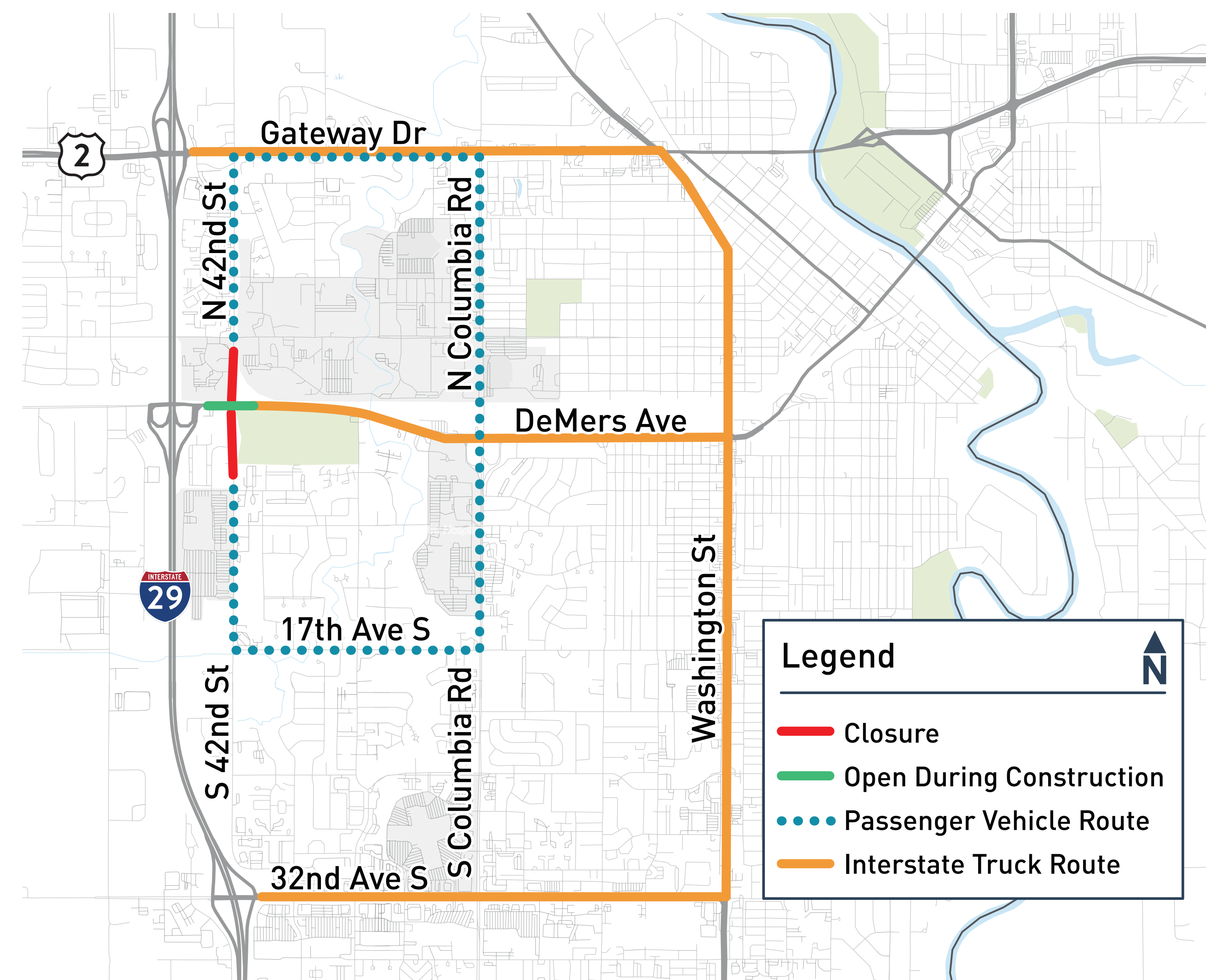
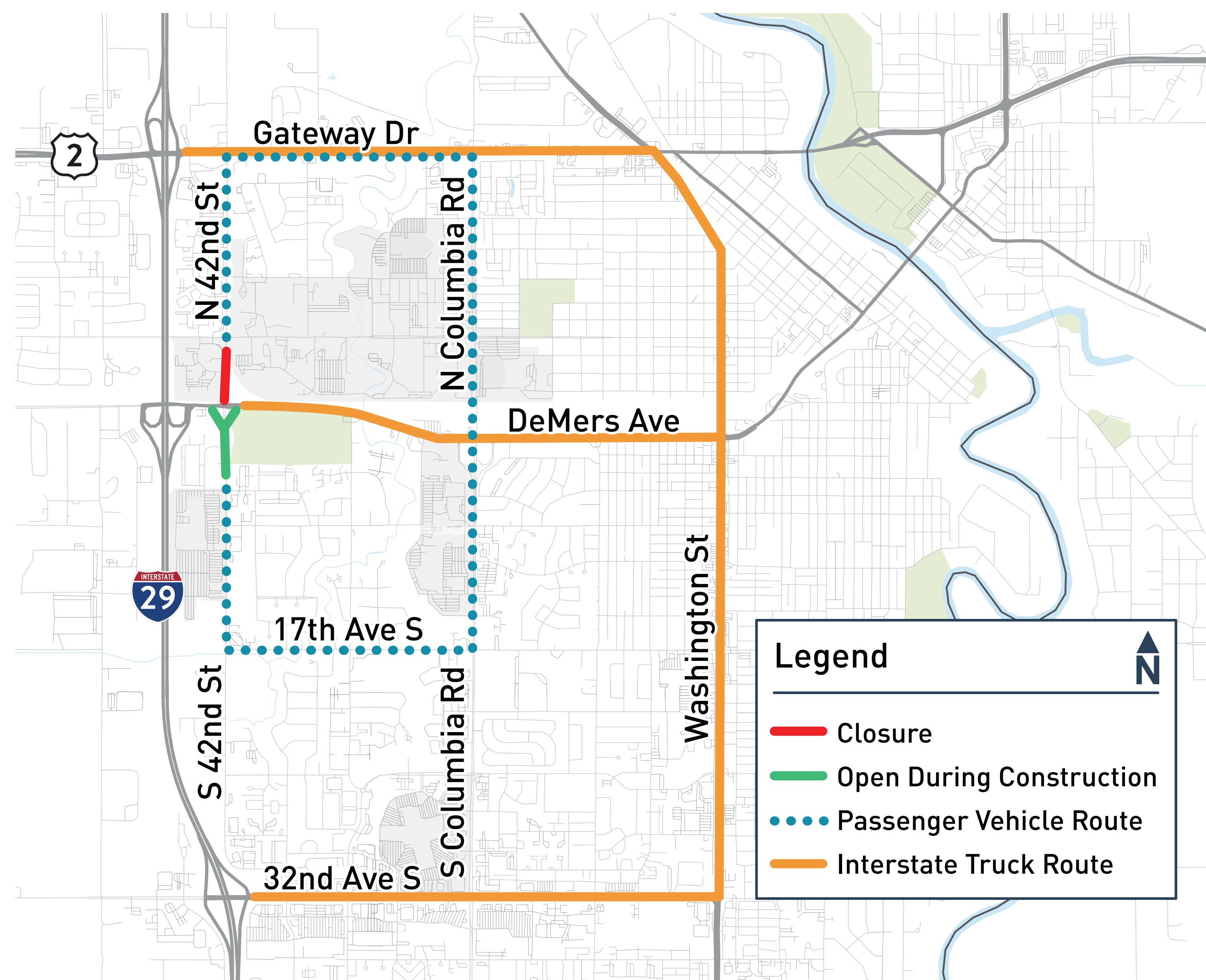
LEARN MORE BY VISITING: www.dot.nd.gov/42nd-street-demers-avenue-underpass

TRAFFIC OPERATIONS DURING CONSTRUCTION



SPRING 2026 - SUMMER 2027

SUMMER 2027 - FALL 2027



SEE CONSTRUCTION STAGE TRAFFIC OPERATIONS ONLINE AT: www.connector.eagle3dstreaming.com/v5/BMIStudio/42D/default

TRAFFIC OPERATIONS AFTER CONSTRUCTION



PHASE 6 - PROJECT COMPLETE



PROJECT IMPROVEMENTS

- New Underpass
- New Streets and Intersections
- New Traffic Signals
- New Pedestrian Walkways

PERFORMANCE SNAPSHOT

- Travel time reliability improved
- Intersection delay reduced
- Crash reduction expectation based on design type

LEARN MORE BY VISITING: www.dot.nd.gov/42nd-street-demers-avenue-underpass

RAY RICHARDS GOLF COURSE REDESIGN



NEW LAYOUT



LEARN MORE BY VISITING: www.dot.nd.gov/42nd-street-demers-avenue-underpass

CONSTRUCTION PHASING OVERVIEW



PHASE 1A & 1B



Railroad shoofly, DeMers Ave. bypass, water lines (Spring 26 - Summer 26)

PHASE 2



Railroad bridge, DeMers Bridge and reconstruction, Watermain and Storm sewer (Summer 26 - Early Summer 27)

PHASE 3



Remove shoofly, Remove bypass (Summer 27)

PHASE 4



Earthwork/grading, Storm water basins, Construct dry storage (Late Summer 27 - Early Fall 27)

PHASE 5



DeMers Ave. reconstruction e/w sides (Fall 27)

PHASE 6



Project Complete

WORK AREA

LEARN MORE BY VISITING: www.dot.nd.gov/42nd-street-demers-avenue-underpass