

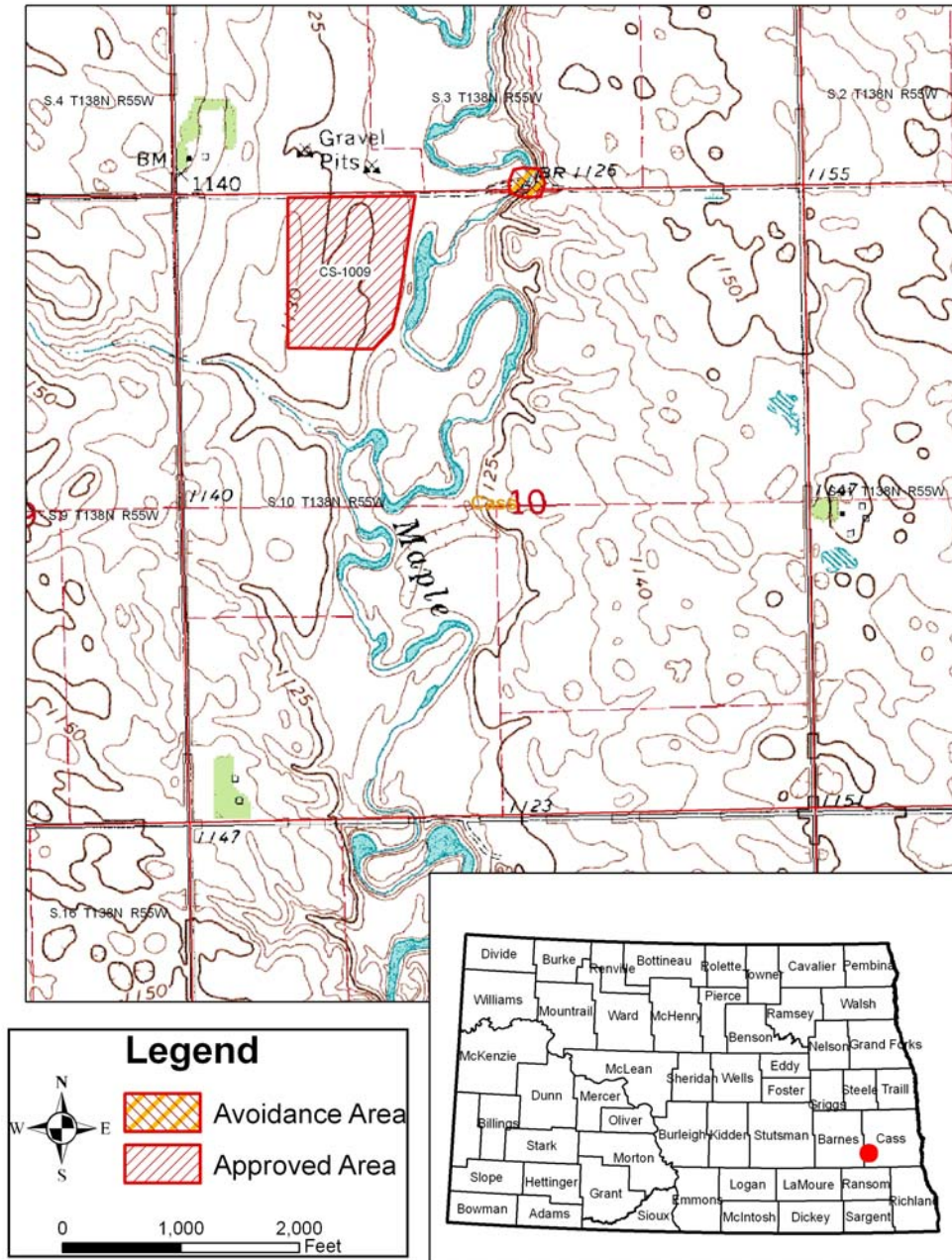
CS-1009



S. 10 T. 138 N, R 55 W

Cass

Conditions:



This approval does not imply landowner permission to acquire material at this location. An agreement with the landowner is still necessary. The contractor will be responsible for any impacts to wetlands, including permitting those impacts and mitigating the loss of the wetlands. As with all projects, if cultural artifacts and/or features (e.g., stone tools, fire hearths, stone circles, burials) are encountered, provisions outlined in Section 107.04 of the Standard Specifications for Road and Bridge Construction shall be followed.

If you have any questions regarding material sources please email materialsource@nd.gov