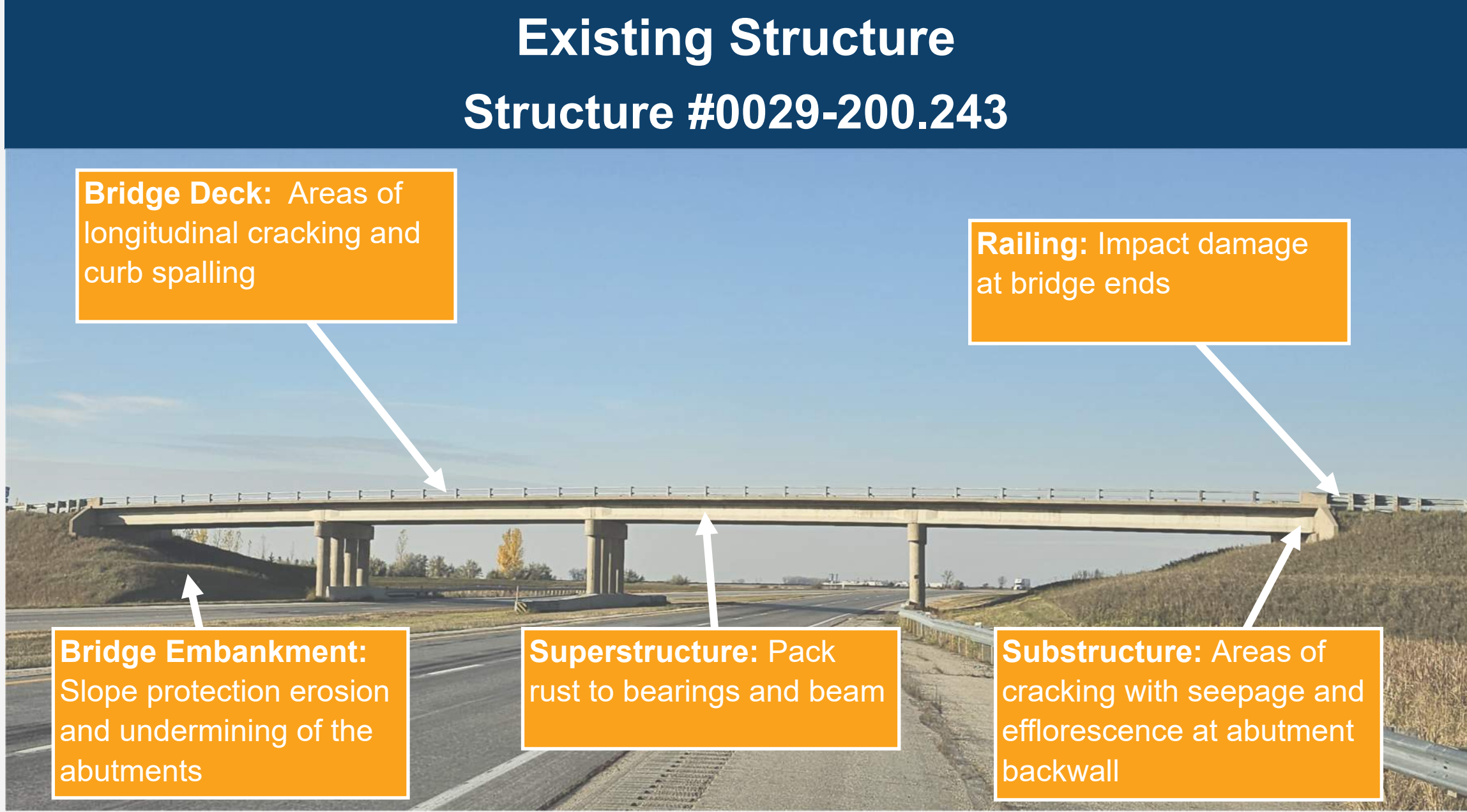
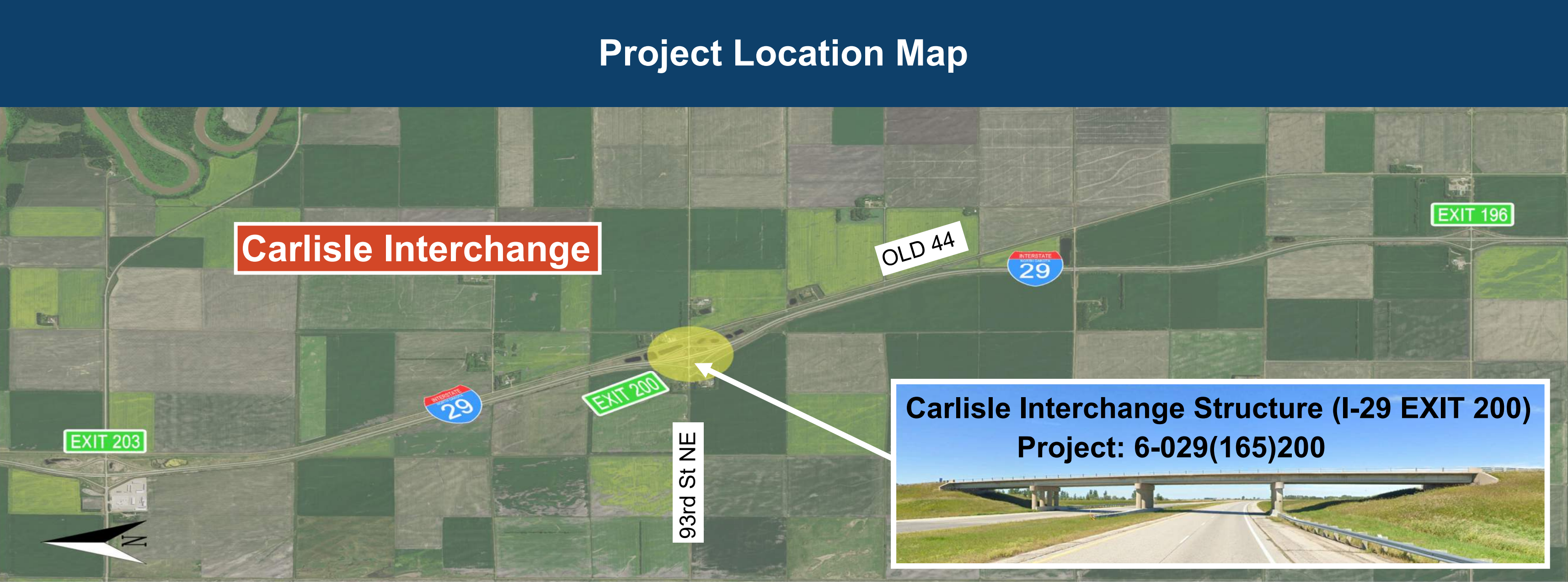
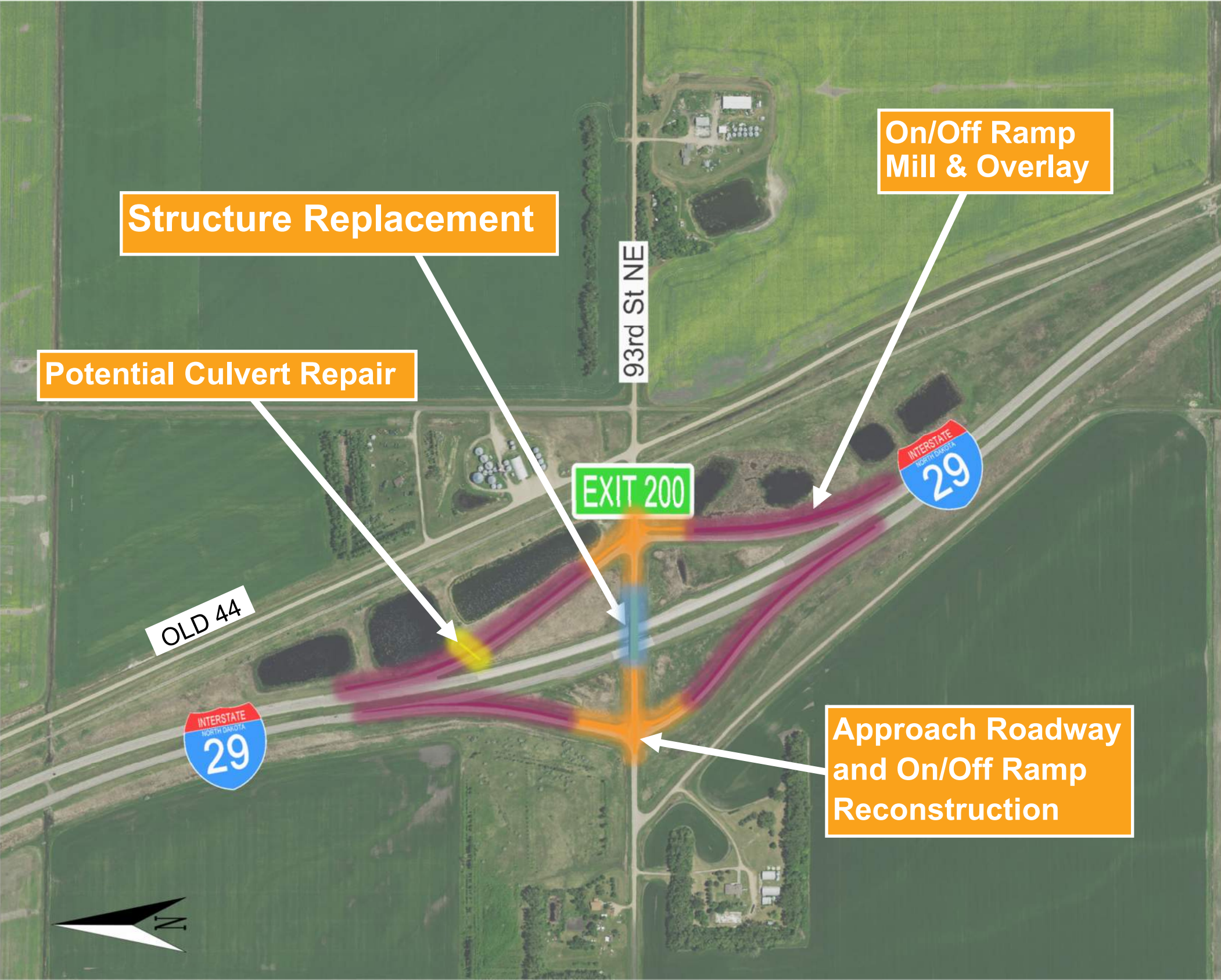


# Exhibit 1 - Project Overview

## Carlisle Interchange Structure Replacement (I-29 EXIT 200)

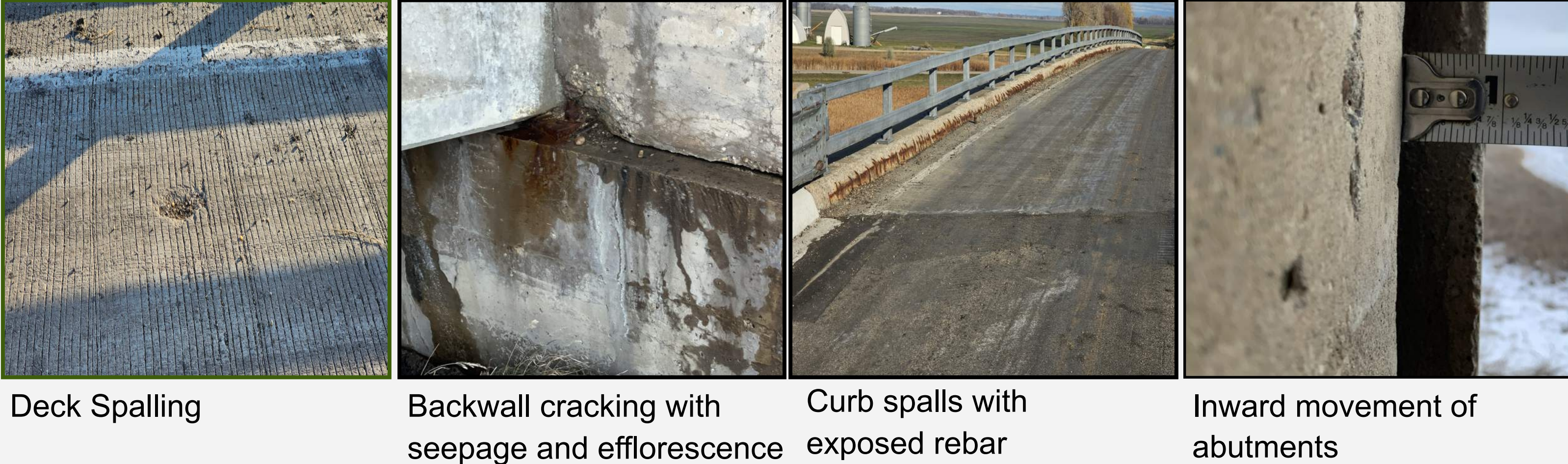


- Existing Structure
- Constructed in 1959
  - Spans — 4
  - Length — 260'
  - Clear Width — 24'
  - Min Vertical Clearance:  
South Side—16'-8"  
North Side— 16'-8 1/2"
  - Deficiencies shown describe a few of the structural elements to be addressed

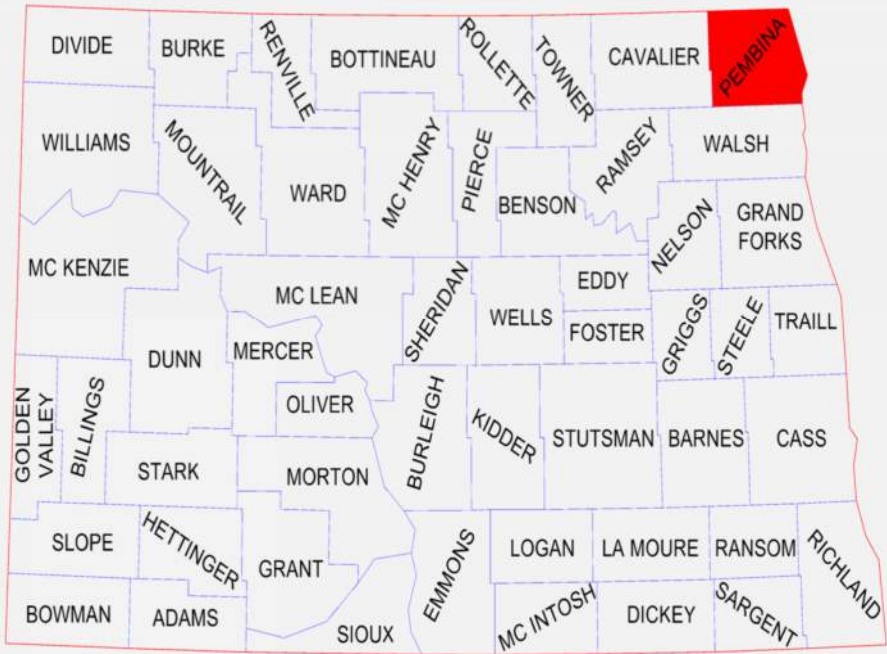


### Proposed Construction Sequence

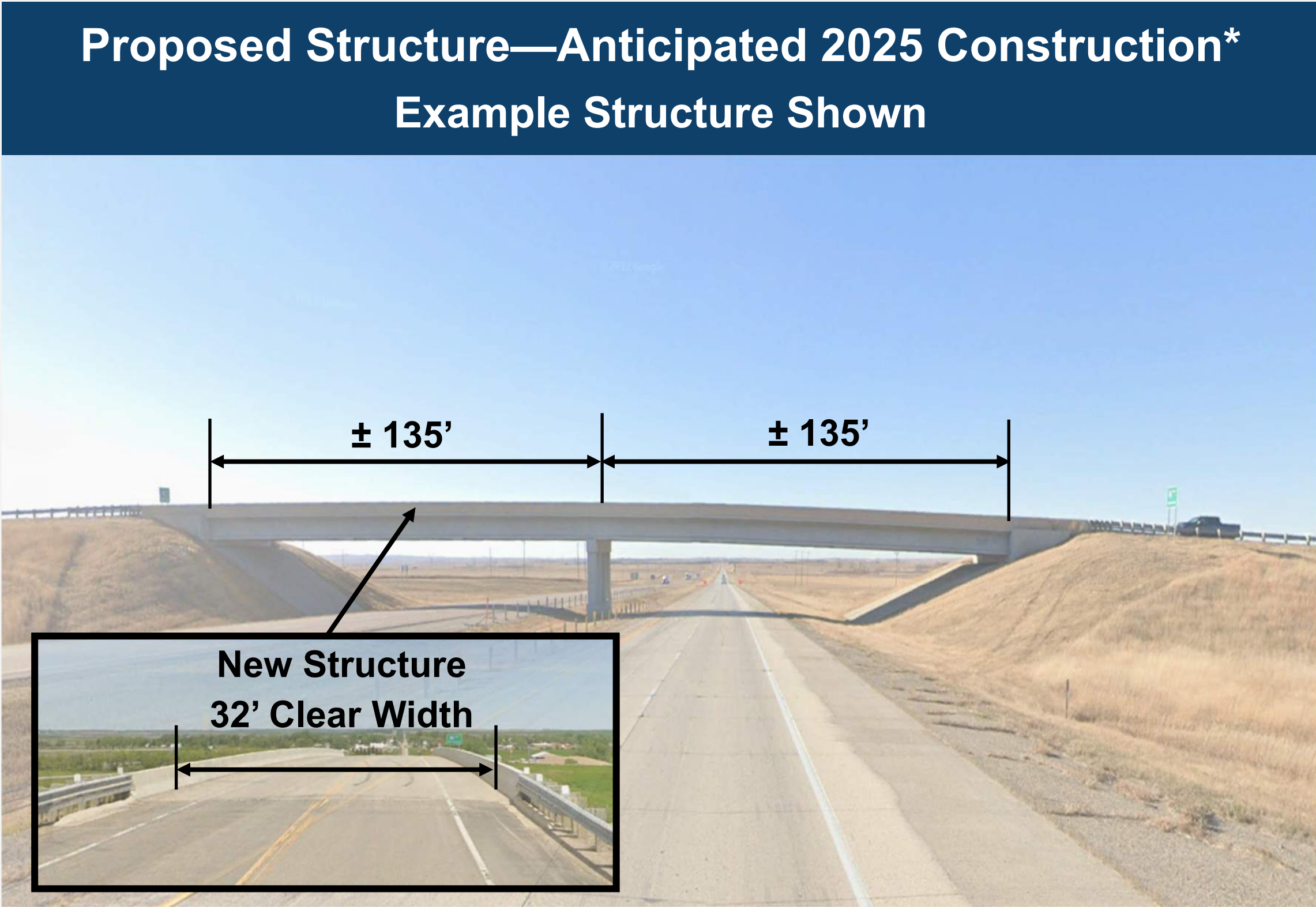
- Detour traffic as needed
- Close structure
- Remove existing structure
- Construct new structure
- Reconstruct segments of 93rd St NE and I-29 on/off ramps
- Mill and overlay I-29 on/off ramps
- Reopen bridge to traffic



The above map depicts the Carlisle Interchange located at the intersection of 93rd Street NE and Interstate 29 (EXIT 200). The blue area highlights the approximate limits of the structure replacement. The orange areas outline the approximate limits along the approach roadway and on/off ramps that may be impacted and require reconstruction once the tie-in locations are finalized. The purple areas represent remaining limits along the on/off ramps that will be milled and overlaid. The yellow area depicts an approximate location of a culvert repair that may be included with this project.



Pembina County, ND



- Proposed Structure
- Spans — 2
  - Length — 270' ±
  - Clear Width — 32'
  - Vertical Clearance — 16'-9"
  - New structure will address existing deficiencies, reduce the need for maintenance and provide improved safety features.

### Public Input Meeting - Drayton, ND

\* Construction schedule subject to change