



North Dakota Department of Transportation

Thomas K. Sorel
Director

Doug Burgum
Governor

March 2, 2018

ADDENDUM 1 – JOB 29

TO: All prospective bidders on project SS-6-018(076)152, Job No. 29 scheduled for the March 9, 2018 bid opening.

The following plan and request for proposal revisions shall be made:

Plan Revisions:

Remove and replace sheets 2-1, 6-1, 8-1, 100-1, 100-3 and 100-4 with the enclosed sheets revised 1/30/2018.

Sheet 2-1:

Added Sheet 100-4 and Sheet 100-5.

Sheet 6-1:

Added Note 704-500 PORTABLE RUMBLE STRIPS (PRS).

Sheet 8-1:

Updated Quantity 704-1000.

Added 704-1048 PORTABLE RUMBLE STRIPS (PRS).

Sheet 100-1:

Updated Traffic Control Devices List.

Sheet 100-3 & 4:

Added Sheets

Request for Proposal Revisions:

Remove and replace pages 5 of 7 of the Proposal pages located at the beginning of the Request for Proposal, with the enclosed pages revised 3/1/2018.

The following changes were made to the Bid Items:

Spec No.	Code No.	Description	Description of Change
704	1000	TRAFFIC CONTROL SIGNS	Increased from 2,479 to 2,549 UNIT
704	1048	PORTABLE RUMBLE STRIPS	Added Item at 2 EA

This addendum is to be incorporated into the bidder's proposal for this project.

AASHTOWare Project Bids files should be updated by downloading the addendum file from the Bid Express on-line bidding exchange at <http://www.bidx.com/> and load it into the AASHTOWare Project Bids program.

for

PHILLIP MURDOFF, P.E. – CONSTRUCTION SERVICES ENGINEER

80: dch

Enclosure

608 East Boulevard Avenue • Bismarck, North Dakota 58505-0700

Information: 1-855-NDROADS (1-855-637-6237) • FAX: (701) 328-0310 • TTY: 711 • dot.nd.gov

BID ITEMS

Project: SS-6-018(076)152 (PCN-22117)

Bidder must type or neatly print unit prices in numerals, make extensions for each item, and total. Do not carry unit prices further than three (3) decimal places.

Item No.	Spec No.	Code No.	Description	Unit	Approx. Quantity	Unit Price		Amount	
						\$\$\$\$	000	\$\$\$\$	00
001	103	0100	CONTRACT BOND	L SUM	1.				
002	107	0100	RAILWAY PROTECTION INSURANCE	L SUM	1.				
003	401	0070	FOG SEAL	GAL	8,640.				
004	420	0111	CRS2P EMULSIFIED ASPHALT	GAL	87,252.				
005	420	0127	COVER COAT MATERIAL CL 41-M	TON	2,160.				
006	702	0100	MOBILIZATION	L SUM	1.				
007	704	1000	TRAFFIC CONTROL SIGNS	UNIT	2,549.				
008	704	1048	PORTABLE RUMBLE STRIPS	EA	2.				
009	762	0103	PVMT MK PAINTED-MESSAGE	SF	466.				
010	762	0430	SHORT TERM 4IN LINE-TYPE NR	LF	37,792.				
011	762	1104	PVMT MK PAINTED 4IN LINE	LF	144,307.				
012	762	1108	PVMT MK PAINTED 8IN LINE	LF	300.				
013	762	1124	PVMT MK PAINTED 24IN LINE	LF	118.				
			TOTAL SUM BID						

TABLE OF CONTENTS

REVISED 1/30/2018	STATE	PROJECT NO.	SECTION NO.	SHEET NO.
	ND	SS-6-018(076)152	2	1

PLAN SECTIONS

Section	Page(s)	Description
1	1	Title Sheet
2	1	Table of Contents
4	1	Scope of Work
6	1	Notes
8	1	Quantities
10	1-2	Basis of Estimate
20	1	General Details
30	1-2	Typical Sections
100	1-4	Work Zone Traffic Control
120	1-4	Pavement Marking

LIST OF STANDARD DRAWINGS

Number	Description
D-101-1, 2,3	NDDOT Abbreviations
D-101-10	NDDOT Utility Company and Organization Abbreviations
D-101-20, 21	Line Styles
D-101-30, 31,32	Symbols
D-704-3	Lane Markers (Spotting Tab For Seal Projects Only)
D-704-7, 8	Breakaway Systems For Construction Zone Signs - Perforated Tube
D-704-9, 10,11	Construction Sign Details - Terminal And Guide Signs
D-704-13	Barricade And Channelizing Device Details
D-704-14	Construction Sign Punching And Mounting Details
D-704-15	Road Closure Layouts
D-704-20	Terminal And Seal Coat Sign Layouts
D-704-22	Construction Truck And Temporary Detour Layouts
D-704-27	Traffic Control Plan For Moving Operations
D-704-50	Portable Sign Support Assembly
D-762-1	Pavement Marking Message Details
D-762-4	Pavement Marking
D-762-11	Short-Term Pavement Marking

NOTES

REVISED 01/30/2018

STATE	PROJECT NO.	SECTION NO.	SHEET NO.
ND	SS-6-018(076)152	6	1

- 100-P01 LARIMORE DAYS: The annual Larimore Days is tentatively scheduled for Monday, July 16th, through Sunday, July 22nd in the City of Larimore. Contact the City Auditor at (701)343-2181 prior to beginning work on this project to confirm these dates. No work will be performed within the city limits during this time period.
- 100-P02 COORDINATION OF PROJECTS: Another project in the vicinity of this project is under contract during the 2018 construction season. This project is RSS-6-018(075)163, which is the replacement of RR Crossing - BNSF X-ING DOT 086877M, and is located in the city of Larimore.
- 105-110 PAVEMENT SWEEPING: Sweep paved areas that were used by construction traffic before opening these areas to public traffic.

Sweep all newly constructed pavement no more than 24 hours before a scheduled final inspection.

Use a vacuum or pick-up type sweeper to perform this work within the City segment.
- 107-115 RAILROAD PROTECTIVE LIABILITY INSURANCE: This project crosses the BNSF Railway Company at RP 163.202. The type of work that will be performed within the railroad right of way is preventative maintenance Seal and Cover coat. Direct inquiries regarding protective liability insurance to:

Rosa Martinez
Marsh USA Inc.
4400 Comerica Bank Tower
1717 Main Street
Dallas, TX 75201-7357, USA
214-303-8519
Rosa.M.Martinez@marsh.com

Obtain information regarding crossing number 086877M from the Federal Railroad Administration website: <http://safetydata.fra.dot.gov/Officeofsafety/>
- 401-P01 FOG SEAL APPLICATION: CSS-1H will be required. Broom roadway before the Fog Seal application. Apply Fog Seal at the rate shown in the Basis of Estimate, or as directed by the Engineer. Dilute the Fog Seal oil 50% (water) and 50% (CSS-1H) or as directed by the Engineer. Dilution at the supplier will be required. Begin this work within 48 hours of the mainline seal completion.
- 420-P01 SEAL COAT: Initial light brooming will be during the cool period of the early morning of the next day after seal application. Traffic control will be needed during the brooming operation.
- 420-P02 PROTECTION OF UTILITIES: All manholes, catch basins and valves shall be covered and protected from seal coat operations. Monuments in the limits of the seal coat not shown on the plans shall be protected.

- 704-500 PORTABLE RUMBLE STRIPS (PRS): Use PRS made of rubber or engineered polymers.

Install PRS that meet the following criteria:
 - Have no adhesives or fasteners required for placement;
 - Have a manufacture's speed rating that meets or exceeds the posted speed limit; and
 - Each strip in the array must weigh a minimum of 100 pounds.
Use individual PRS constructed in one of the following manners:
 - A single piece;
 - Inter locking segments; or
 - Two pieces hinged at the midpoint.
An installed array of PRS consists of a minimum of 3 individual strips.

Move rumble strips with the flagging operation. Do not place rumble strips on horizontal curves.

The Engineer will count and measure each array as one unit. Include the cost of providing, installing, maintaining, and relocating PRS in the unit price bid for "Portable Rumble Strips".
- 704-P01 TRAFFIC CONTROL FOR SEAL COATS: Provide traffic control consisting of a temporary lane closure, flagging, and a pilot car.

Traffic control device quantities are based on a 6 mile limitation and following list:
 1. Standard D-704-15, layout A, place layout A at both ends of the work zone. Flagging stations located within the work zone require sign W20-7-48 only;
 2. Standard D-704-20, layout H, signing will be required at junctions: Grand Forks Co. Roads, 12, 6, and 4.
 3. Standard D-704-22, layouts K and L.
Provide additional devices at no cost to the Department.

Place flaggers and traffic control devices as shown on Standard D-704-15, layout A at the following intersections when the lane closure spans across them.
 1. Grand Forks County Road 12
 2. Grand Forks County Road 6
 3. Grand Forks County Road 4
- 762-050 PAVEMENT MARKING: If the Engineer and Contractor agree, plan quantity will be used as the measurement for payment for pavement marking items.

This document was originally issued and sealed by Dustin Lang, Registration Number PE-6394, on 01/30/18 and the original document is stored at the North Dakota Department of Transportation.

ESTIMATE OF QUANTITIES

STATE	PROJECT NO.	SECTION NO.	SHEET NO.
ND	SS-6-018(076)152	8	1

SPEC CODE	ITEM DESCRIPTION	UNIT	MAINLINE	SECTION 3-4	SECTION 5	TOTAL
			-----	-----	-----	-----
103	0100 CONTRACT BOND	L SUM	1			1
107	0100 RAILWAY PROTECTION INSURANCE	L SUM	1			1
401	0070 FOG SEAL	GAL	7,776	793	71	8,640
420	0111 CRS2P EMULSIFIED ASPHALT	GAL	80,349	6,338	565	87,252
420	0127 COVER COAT MATERIAL CL 41-M	TON	1,944	198	18	2,160
702	0100 MOBILIZATION	L SUM	1			1
704	1000 TRAFFIC CONTROL SIGNS	UNIT	2,549			2,549
704	1048 PORTABLE RUMBLE STRIPS	EA	2			2
762	0103 PVMT MK PAINTED-MESSAGE	SF	466			466
762	0430 SHORT TERM 4IN LINE-TYPE NR	LF	37,792			37,792
762	1104 PVMT MK PAINTED 4IN LINE	LF	136,315	7,992		144,307
762	1108 PVMT MK PAINTED 8IN LINE	LF	300			300
762	1124 PVMT MK PAINTED 24IN LINE	LF	46	72		118

STATE	PROJECT NO.	SECTION NO.	SHEET NO.
ND	SS-6-018(076)152	100	1

SIGN NUMBER	SIGN SIZE	DESCRIPTION	AMOUNT REQUIRED	UNITS PER AMOUNT	UNITS SUB TOTAL
D3-36	36"x6"	STREET NAME SIGN (Sign and installation only)		6	
G20-1-60	60"x24"	ROAD WORK NEXT ___ MILES	2	34	68
G20-1b-60	60"x24"	WORK IN PROGRESS/ NO WORK IN PROGRESS (Sign and installation only)		26	
G20-2-48	48"x24"	END ROAD WORK	2	19	38
G20-4-36	36"x18"	PILOT CAR FOLLOW ME (Mounted to back of pilot car)		18	
G20-10-108	108"x48"	CONTRACTOR SIGN		64	
G20-50a-72	72"x36"	ROAD WORK NEXT ___ MILES RT & LT ARROWS	4	37	148
G20-52a-72	72"x24"	ROAD WORK NEXT ___ MILES RT or LT ARROW	2	30	60
G20-55-96	96"x48"	SPEED LIMIT ENFORCED - MINIMUM FEE \$80 WHEN WORKERS PRESENT		59	
M1-1-36	36"x36"	INTERSTATE ROUTE MARKER (Post and installation only)		10	
M1-4-24	24"x24"	U.S. ROUTE MARKER (Post and installation only)		10	
M1-5-24	24"x24"	STATE ROUTE MARKER (Post and installation only)		10	
M3-1-24	24"x12"	NORTH (Mounted on route marker post)		7	
M3-2-24	24"x12"	EAST (Mounted on route marker post)		7	
M3-3-24	24"x12"	SOUTH (Mounted on route marker post)		7	
M3-4-24	24"x12"	WEST (Mounted on route marker post)		7	
M4-8-24	24"x12"	DETOUR (Mounted on route marker post)		7	
M4-9-30	30"x24"	DETOUR ARROW RIGHT or LEFT/AHD AND RT or LT		15	
M4-10-48	48"x18"	DETOUR ARROW RIGHT or LEFT		23	
M5-1-21	21"x15"	ARROW AHD AND RT or LT (Mounted on route marker post)		7	
M5-2-21	21"x15"	ARROW AHD UP & RT or LT (Mounted on route marker post)		7	
M6-1-21	21"x15"	ARROW RT or LT (Mounted on route marker post)		7	
M6-2-21	21"x15"	ARROW UP & RT or LT (Mounted on route marker post)		7	
M6-3-21	21"x15"	ARROW AHD (Mounted on route marker post)		7	
R1-1-48	48"x48"	STOP		32	
R1-1a-18	18"x18"	STOP and SLOW PADDLE Back to Back	4	5	20
R1-2-60	60"x60"	YIELD		29	
R2-1-48	48"x60"	SPEED LIMIT ___	7	39	273
R2-1a-24	24"x18"	MINIMUM FEE \$80 (Mounted on Speed Limit post)	7	10	70
R3-7-48	48"x48"	LEFT or RIGHT LANE MUST TURN LEFT or RIGHT		35	
R4-1-48	48"x60"	DO NOT PASS	9	39	351
R4-7-48	48"x60"	KEEP RIGHT SYMBOL		39	
R5-1-48	48"x48"	DO NOT ENTER		35	
R6-1-36	36"x12"	ONE WAY RIGHT or LEFT		13	
R7-1-12	12"x18"	NO PARKING		11	
R10-6-24	24"x36"	STOP HERE ON RED		16	
R11-2-48	48"x30"	ROAD CLOSED		28	
R11-2a-48	48"x30"	STREET CLOSED	2	28	56
R11-3a-60	60"x30"	ROAD CLOSED ___ MILES AHEAD LOCAL TRAFFIC ONLY		31	
R11-3c-60	60"x30"	STREET CLOSED ___ MILES AHEAD LOCAL TRAFFIC ONLY		31	
R11-4a-60	60"x30"	STREET CLOSED TO THRU TRAFFIC	2	31	62
W1-3-48	48"x48"	RIGHT or LEFT SHARP REVERSE CURVE ARROW		35	
W1-4-48	48"x48"	RIGHT or LEFT REVERSE CURVE ARROW		35	
W1-4b-48	48"x48"	DOUBLE RIGHT or LEFT REVERSE CURVE ARROW		35	
W1-6-48	48"x24"	LARGE ARROW		26	
W3-1-48	48"x48"	STOP AHEAD SYMBOL		35	
W3-3-48	48"x48"	SIGNAL AHEAD SYMBOL		35	
W3-4-48	48"x48"	BE PREPARED TO STOP	4	35	140
W3-5-48	48"x48"	SPEED REDUCTION AHEAD	10	35	350
W4-2-48	48"x48"	RIGHT or LEFT LANE TRANSITION SYMBOL		35	
W5-1-48	48"x48"	ROAD NARROWS		35	
W5-8-48	48"x48"	THRU TRAFFIC RIGHT LANE		35	
W5-9-48	48"x48"	ROAD WORK TRAFFIC ONLY DOWN & LT or RT ARROW		35	
W6-3-48	48"x48"	TWO WAY TRAFFIC SYMBOL		35	
W8-1-48	48"x48"	BUMP		35	
W8-3-48	48"x48"	PAVEMENT ENDS		35	
W8-7-48	48"x48"	LOOSE GRAVEL		35	
W8-9a-48	48"x48"	SHOULDER DROP-OFF		35	
W8-11-48	48"x48"	UNEVEN LANES		35	
W8-12-48	48"x48"	NO CENTER STRIPE	6	35	210
W8-53-48	48"x48"	TRUCKS ENTERING HIGHWAY		35	
W8-54-48	48"x48"	TRUCKS ENTERING AHEAD or ___ FT.		35	
W8-55-48	48"x48"	TRUCKS CROSSING AHEAD or ___ FT.		35	
W8-56-48	48"x48"	TRUCKS EXITING HIGHWAY		35	
W9-3a-48	48"x48"	CENTER LANE CLOSED SYMBOL		35	
W12-2-48	48"x48"	LOW CLEARANCE SYMBOL		35	
W13-1-24	24"x24"	___ MPH ADVISORY SPEED PLATE (Mounted on warning sign post)		11	
W13-4-48	48"x60"	RAMP ARROW		39	
W14-3-48	48"x36"	NO PASSING ZONE		23	
W20-1-48	48"x48"	ROAD WORK AHEAD or ___ FT or ___ MILE		35	
W20-2-48	48"x48"	DETOUR AHEAD or ___ FT		35	
W20-3-48	48"x48"	ROAD or STREET CLOSED AHEAD or ___ FT.		35	
W20-4-48	48"x48"	ONE LANE ROAD AHEAD or ___ FT.		35	
W20-5-48	48"x48"	RIGHT or LEFT LANE CLOSED AHEAD or ___ FT.		35	
W20-7a-48	48"x48"	FLAGGING SYMBOL	4	35	140
W20-7k-24	24"x18"	___ FEET (Mounted on warning sign post)		10	
W20-8-48	48"x48"	STREET CLOSED	2	35	70
W20-51-48	48"x48"	EQUIPMENT WORKING		35	
W20-52-54	54"x12"	NEXT ___ MILES (Mounted on warning sign post)	9	12	108
W21-1a-48	48"x48"	WORKERS SYMBOL		35	
W21-2-48	48"x48"	FRESH OIL		35	
W21-3-48	48"x48"	ROAD MACHINERY AHEAD or ___ FT		35	

SIGN NUMBER	SIGN SIZE	DESCRIPTION	AMOUNT REQUIRED	UNITS PER AMOUNT	UNITS SUB TOTAL
W21-5-48	48"x48"	SHOULDER WORK		35	
W21-5a-48	48"x48"	RIGHT or LEFT SHOULDER CLOSED		35	
W21-5b-48	48"x48"	RIGHT or LEFT SHOULDER CLOSED AHEAD or ___ FT.		35	
W21-6a-48	48"x48"	SURVEY CREW AHEAD		35	
W21-50-48	48"x48"	BRIDGE PAINTING AHEAD or ___ FT.		35	
W21-51-48	48"x48"	MATERIAL ON ROADWAY		35	
W22-8-48	48"x48"	FRESH OIL LOOSE ROCK	9	35	315
	24"x24"	TAKE TURNS (6" D letters) (Mounted on stop sign post)		11	

SPECIAL SIGNS					
SIGN NUMBER	SIGN SIZE	DESCRIPTION	AMOUNT REQUIRED	UNITS PER AMOUNT	UNITS SUB TOTAL
CONSING 1	48"x48"	RUMBLE STRIPS AHEAD	2	35	70

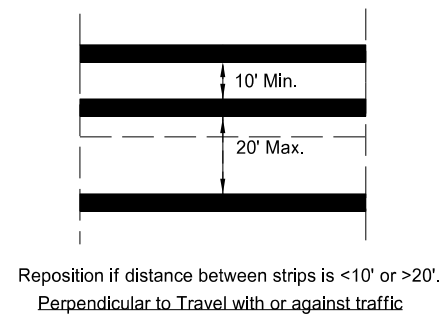
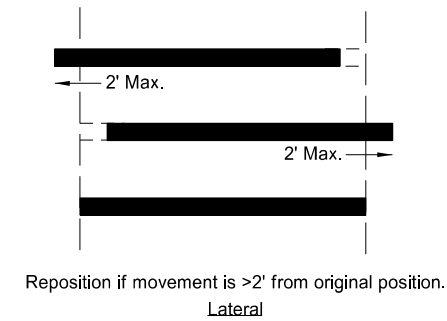
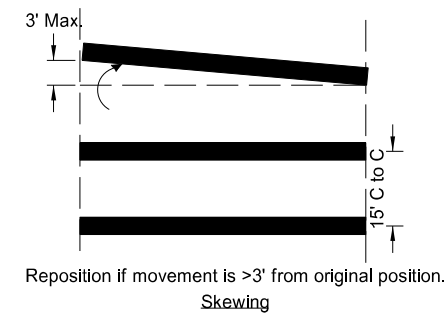
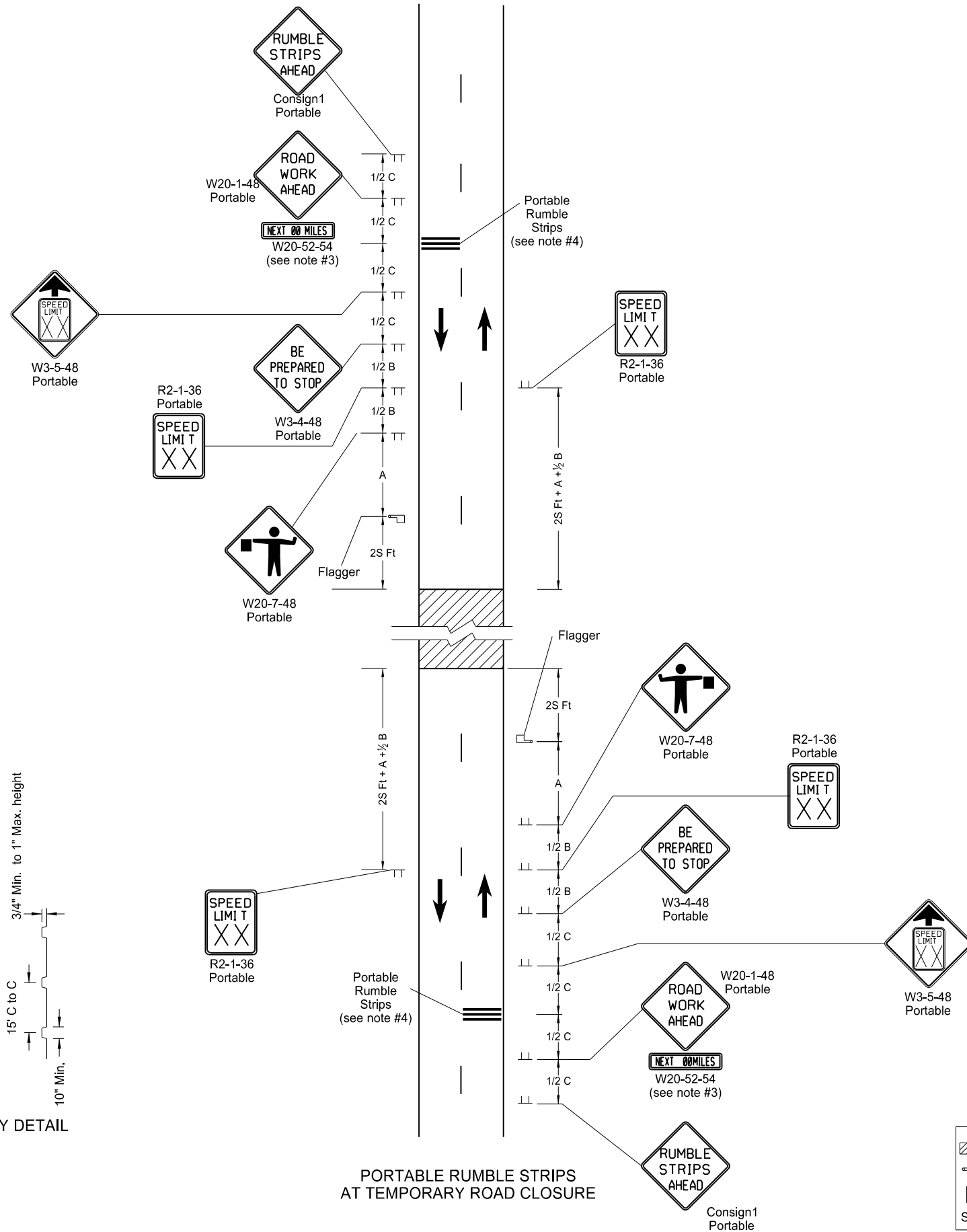
SPEC & CODE			TOTAL UNITS
704-1000	TRAFFIC CONTROL SIGNS		2549

SPEC & CODE	DESCRIPTION	UNIT	QUANTITY
704-0100	FLAGGING	MHR	
704-1041	ATTENUATION DEVICE-TYPE B-55	EACH	
704-1043	ATTENUATION DEVICE-TYPE B-65	EACH	
704-1044	ATTENUATION DEVICE-TYPE B-70	EACH	
704-1050	TYPE I BARRICADES	EACH	
704-1051	TYPE II BARRICADES	EACH	
704-1052	TYPE III BARRICADES	EACH	8
704-1060	DELINEATOR DRUMS	EACH	
704-1065	TRAFFIC CONES	EACH	
704-1067	TUBULAR MARKERS	EACH	
704-1070	DELINEATOR	EACH	
704-1072	FLEXIBLE DELINEATORS	EACH	
704-1081	VERTICAL PANELS - BACK TO BACK	EACH	
704-1085	SEQUENCING ARROW PANEL - TYPE A	EACH	
704-1086	SEQUENCING ARROW PANEL - TYPE B	EACH	
704-1087	SEQUENCING ARROW PANEL - TYPE C	EACH	
704-1088	SEQUENCING ARROW PANEL - TYPE C - CROSSOVER	EACH	
704-1095	TYPE B FLASHERS	EACH	
704-1500	OBLITERATION OF PVMT MK	SF	
704-3501	PORTABLE PRECAST CONCRETE MED BARRIER	LF	
704-3510	PRECAST CONCRETE MED BARRIER - STATE FURNISHED	EACH	
762-0200	RAISED PAVEMENT MARKERS	EACH	
762-0420	SHORT TERM 4IN LINE - TYPE R	LF	
762-0430	SHORT TERM 4IN LINE - TYPE NR	LF	58763
772-2110	FLASHING BEACON - POST MOUNTED	EACH	

NOTE:
If additional signs are required, units will be calculated using the formula from Section III-19.06 of the Design Manual.
<http://www.dot.nd.gov/>

This document was originally issued and sealed by Dustin Lang, Registration Number PE-6394, on 1/5/18 and the original document is stored at the North Dakota Department of Transportation.

Traffic Control Devices List



**PORTABLE RUMBLE STRIPS ARRAY
TYPES OF MOVEMENT AND MAXIMUM ALLOWANCES**

- Notes:
1. Number of devices were calculated using 40 mph. Speed determined in the field based on location and conditions.
 2. Re-establish the speed limit. Determine the exact speed limit in the field, dependent on location and conditions.
 3. Use sign W20-52-54 when work area is 1 mile or longer.
 4. Rumble strips are not used on a non paved surface or in a pre-construction speed zone of 25 mph or less.

Road Type	ADVANCE WARNING SIGN SPACING		
	Distance Between Signs Min. (ft)		
	A	B	C
Urban - Low Speed (30 mph or less)	150	150	150
Urban - Low Speed (over 30 to 40 mph)	280	280	280
Urban - High Speed (over 40 mph to 50 mph)	360	360	360
Rural - High Speed (over 50 mph to 65 mph)	720	720	720

KEY

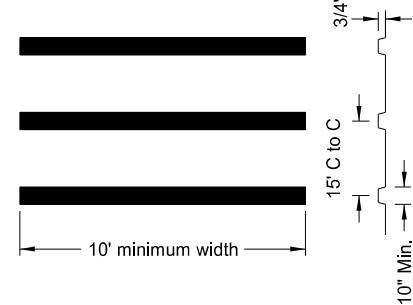
- Work area
- Flagger
- Sign
- S = Numerical value of speed limit or 85th percentile.

Drawing not to scale.

This document was originally issued and sealed by
Dustin Lang
 Registration Number
PE- 6394,
 on 01/30/18 and the original document is stored at the
 North Dakota Department
 of Transportation

PORTABLE RUMBLE STRIPS

PORTABLE RUMBLE STRIPS ARRAY DETAIL



SIGN NUMBER	Consign 1					STATION(S): Various Locations	AREA: 16 Sq.Ft.
WIDTH x HEIGHT	4'-0" x 4'-0"						
BORDER WIDTH	1.25" (inset 0.75")						
CORNER RADIUS	3"						
MOUNTING	Ground						
BACKGROUND	TYPE: XI Reflective COLOR: Fluorescent Orange						
LEGEND/BORDER	TYPE: Non-reflective COLOR: Black						

SYMBOL	X	Y	WID	HT	ANGLE

Dimensions are in inches.tenths Letter locations are panel edge to lower left corner

PANEL STYLE: ND_Misc_Warning.ssd

LETTER POSITION (X)						LENGTH	SIZE	SERIES	
R	U	M	B	L	E		30	7	C 2000
17.4	22.5	28	34.1	39.2	43.8				
S	T	R	I	P	S		25.6	7	C 2000
19.6	24.1	28.7	33.8	36.3	41.3				
A	H	E	A	D			24.5	7	C 2000
20.1	25.6	31.1	35.3	40.7					

This document was originally issued and sealed by
 Dustin Lang
 Registration Number
 PE- 6394 ,
 on 01/30/18 and the original document is stored at the
 North Dakota Department
 of Transportation

CONSTRUCTION SIGN DETAIL