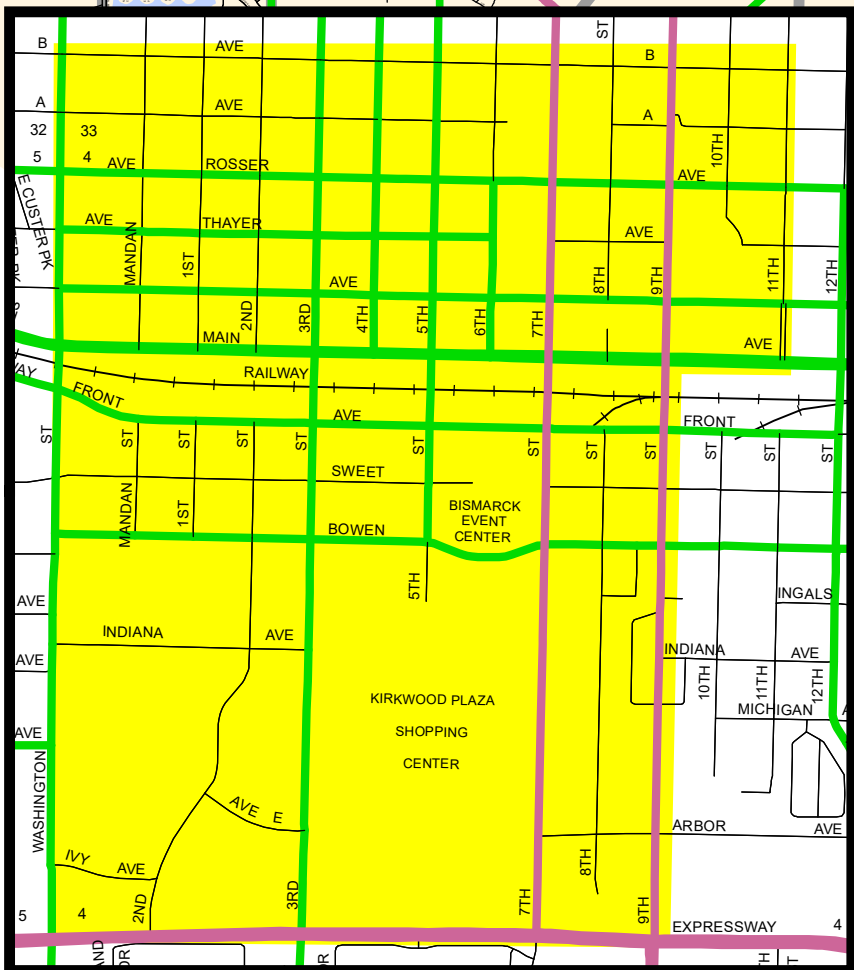
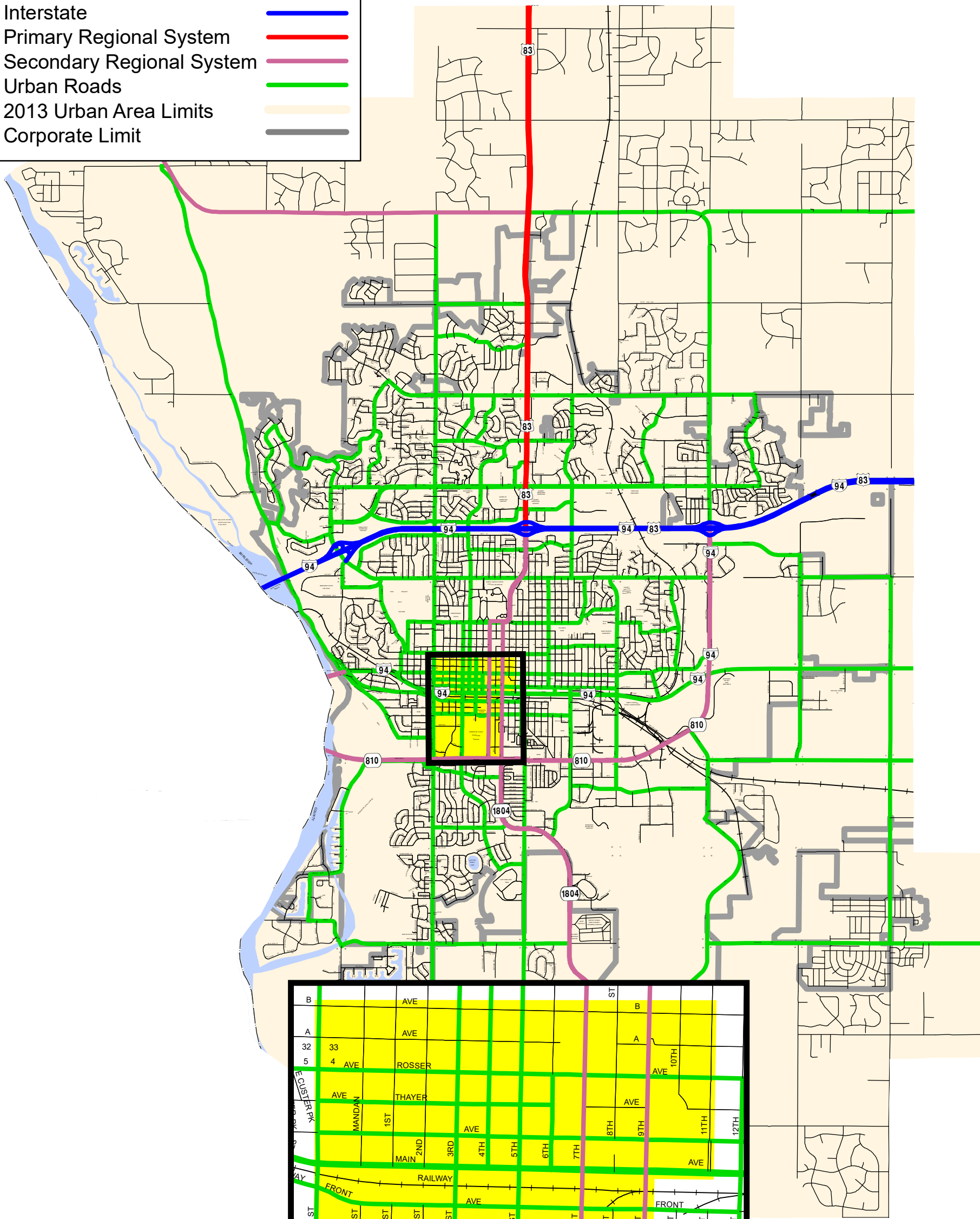


# 2016 URBAN ROAD SYSTEM MAP

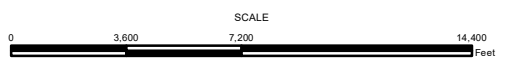
Legend	Existing
Interstate	
Primary Regional System	
Secondary Regional System	
Urban Roads	
2013 Urban Area Limits	
Corporate Limit	



## PROGRAM FOCUS AREA

2016  
 URBAN ROADS SYSTEM  
 2010 POPULATION 61,272  
**BISMARCK**  
 BURLEIGH COUNTY  
 NORTH DAKOTA

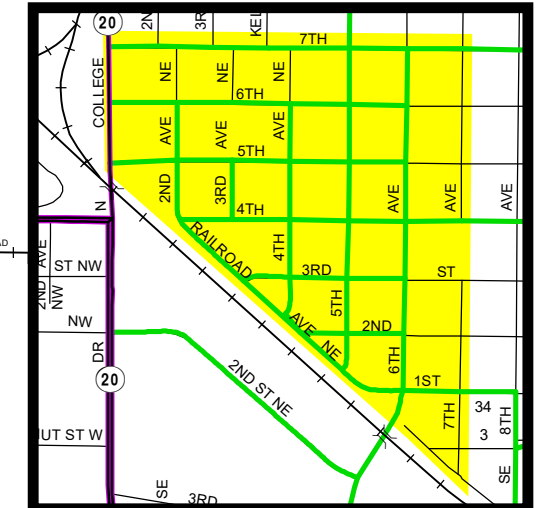
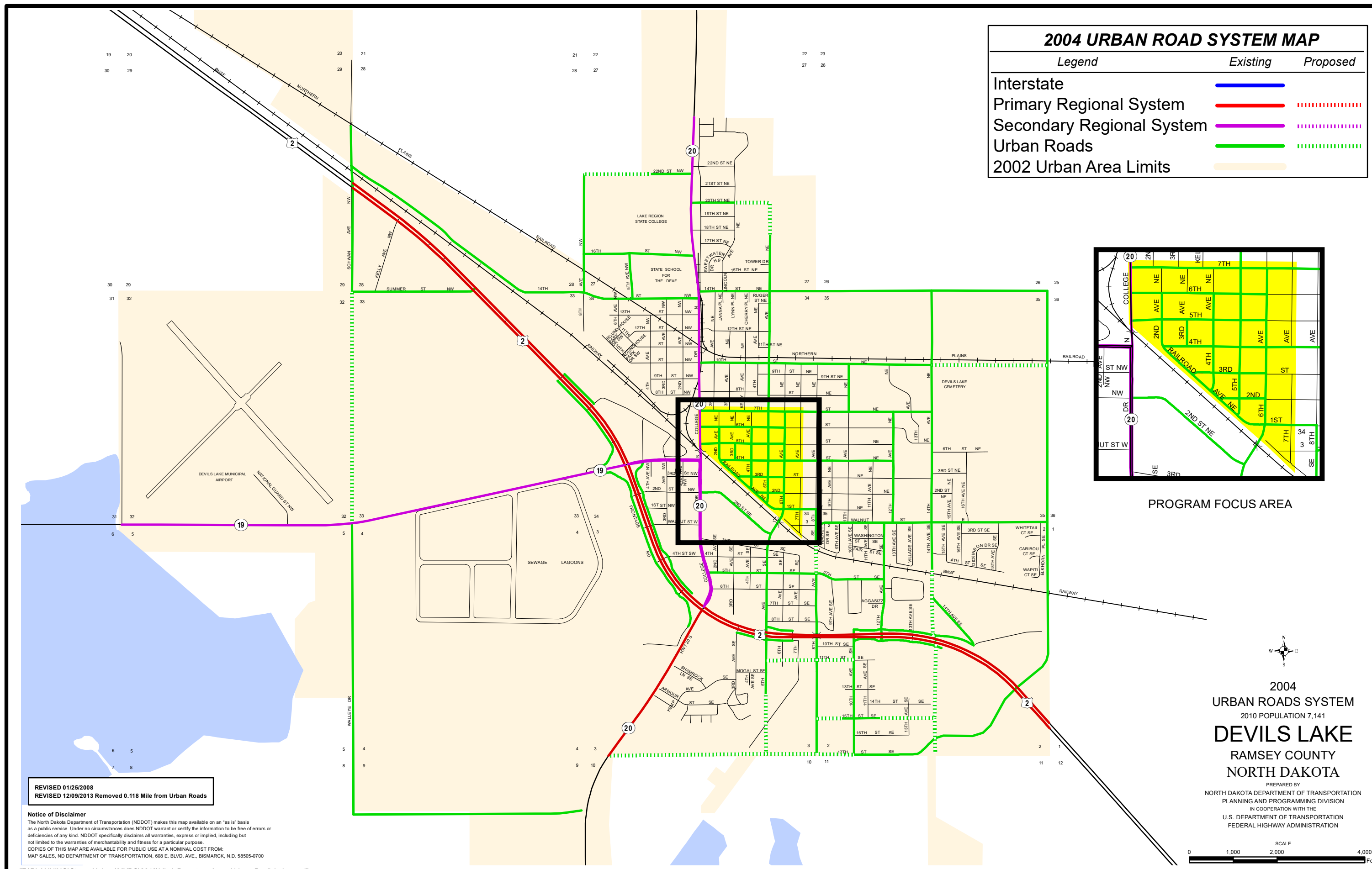
PREPARED BY  
 NORTH DAKOTA DEPARTMENT OF TRANSPORTATION  
 PLANNING / ASSET MANAGEMENT DIVISION  
 IN COOPERATION WITH THE  
 U.S. DEPARTMENT OF TRANSPORTATION  
 FEDERAL HIGHWAY ADMINISTRATION



**Notice of Disclaimer**  
 The North Dakota Department of Transportation (NDDOT) makes this map available on an "as is" basis as a public service. Under no circumstances does NDDOT warrant or certify the information to be free of errors or deficiencies of any kind. NDDOT specifically disclaims all warranties, express or implied, including but not limited to the warranties of merchantability and fitness for a particular purpose.  
 COPIES OF THIS MAP ARE AVAILABLE FOR PUBLIC USE AT A NOMINAL COST FROM:  
 MAP SALES, ND DEPARTMENT OF TRANSPORTATION, 608 E. BLVD. AVE., BISMARCK, N.D. 58505-0700  
 F:\PLANNING\Steve\_Nelson\MXDS\2016\LikelyDowntownArea\_Urban\_Bismarck.mxd

# 2004 URBAN ROAD SYSTEM MAP

Legend	Existing	Proposed
Interstate		
Primary Regional System		
Secondary Regional System		
Urban Roads		
2002 Urban Area Limits		

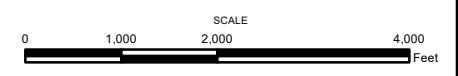


PROGRAM FOCUS AREA



2004  
 URBAN ROADS SYSTEM  
 2010 POPULATION 7,141  
**DEVILS LAKE**  
 RAMSEY COUNTY  
 NORTH DAKOTA

PREPARED BY  
 NORTH DAKOTA DEPARTMENT OF TRANSPORTATION  
 PLANNING AND PROGRAMMING DIVISION  
 IN COOPERATION WITH THE  
 U.S. DEPARTMENT OF TRANSPORTATION  
 FEDERAL HIGHWAY ADMINISTRATION



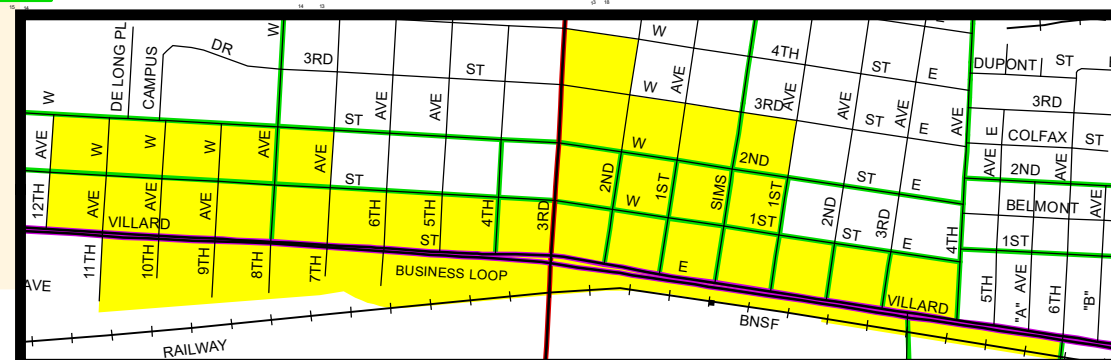
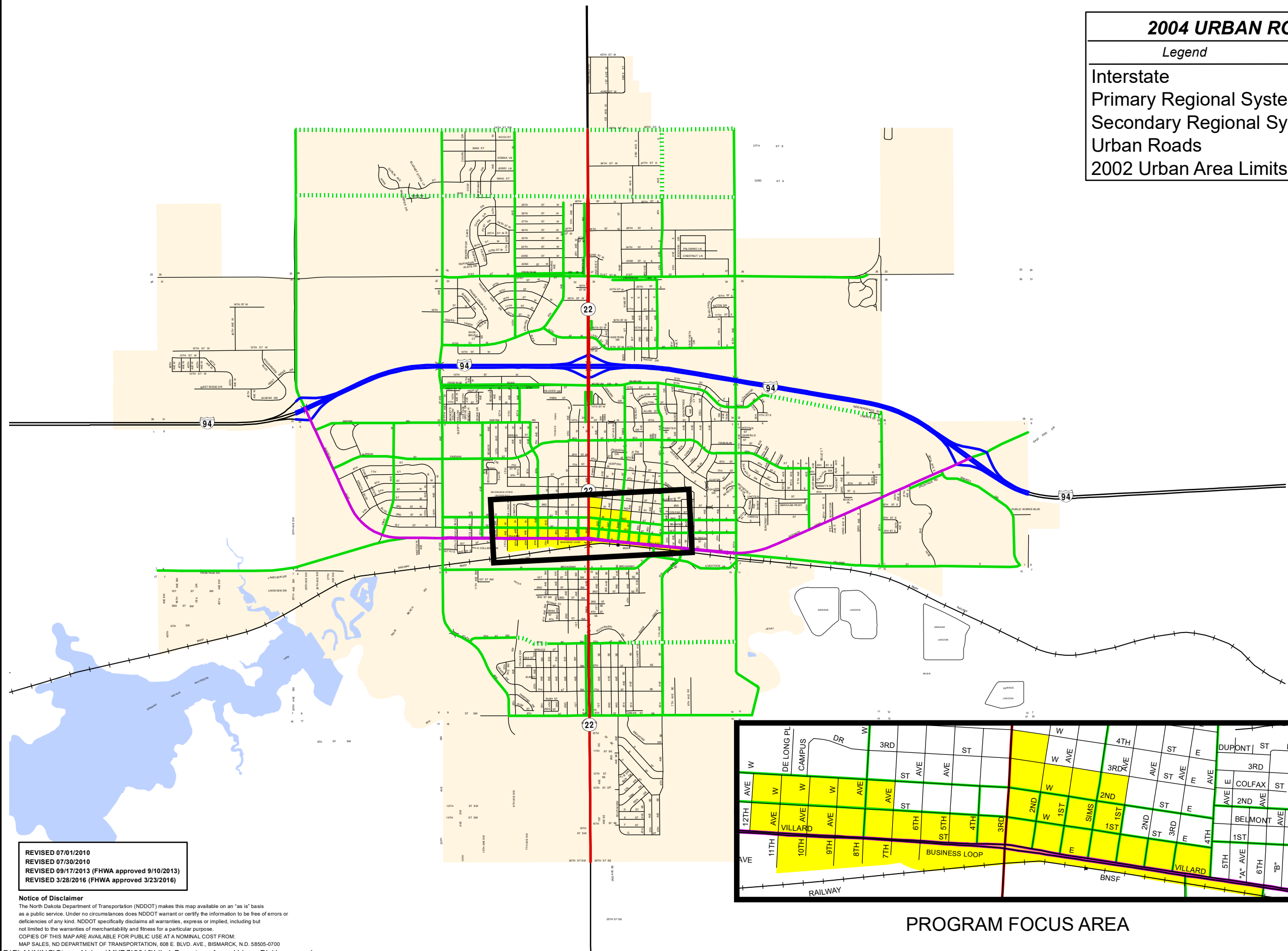
REVISED 01/25/2008  
 REVISED 12/09/2013 Removed 0.118 Mile from Urban Roads

**Notice of Disclaimer**  
 The North Dakota Department of Transportation (NDDOT) makes this map available on an "as is" basis as a public service. Under no circumstances does NDDOT warrant or certify the information to be free of errors or deficiencies of any kind. NDDOT specifically disclaims all warranties, express or implied, including but not limited to the warranties of merchantability and fitness for a particular purpose.  
 COPIES OF THIS MAP ARE AVAILABLE FOR PUBLIC USE AT A NOMINAL COST FROM:  
 MAP SALES, ND DEPARTMENT OF TRANSPORTATION, 608 E. BLVD. AVE., BISMARCK, N.D. 58505-0700

"F:\PLANNING\Steve\_Nelson\MXDS\2018\LikelyDowntownArea\_Urban\_DevilsLake.mxd"

# 2004 URBAN ROAD SYSTEM MAP

Legend	Existing	Proposed
Interstate		
Primary Regional System		
Secondary Regional System		
Urban Roads		
2002 Urban Area Limits		



**PROGRAM FOCUS AREA**

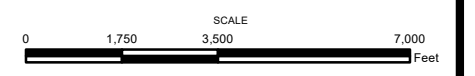
REVISED 07/01/2010  
 REVISED 07/30/2010  
 REVISED 09/17/2013 (FHWA approved 9/10/2013)  
 REVISED 3/28/2016 (FHWA approved 3/23/2016)

**Notice of Disclaimer**  
 The North Dakota Department of Transportation (NDDOT) makes this map available on an "as is" basis as a public service. Under no circumstances does NDDOT warrant or certify the information to be free of errors or deficiencies of any kind. NDDOT specifically disclaims all warranties, express or implied, including but not limited to the warranties of merchantability and fitness for a particular purpose.  
 COPIES OF THIS MAP ARE AVAILABLE FOR PUBLIC USE AT A NOMINAL COST FROM:  
 MAP SALES, ND DEPARTMENT OF TRANSPORTATION, 608 E. BLVD. AVE., BISMARCK, N.D. 58505-0700



2004  
 URBAN ROADS SYSTEM  
 2010 POPULATION 17,787  
**DICKINSON**  
 STARK COUNTY  
 NORTH DAKOTA

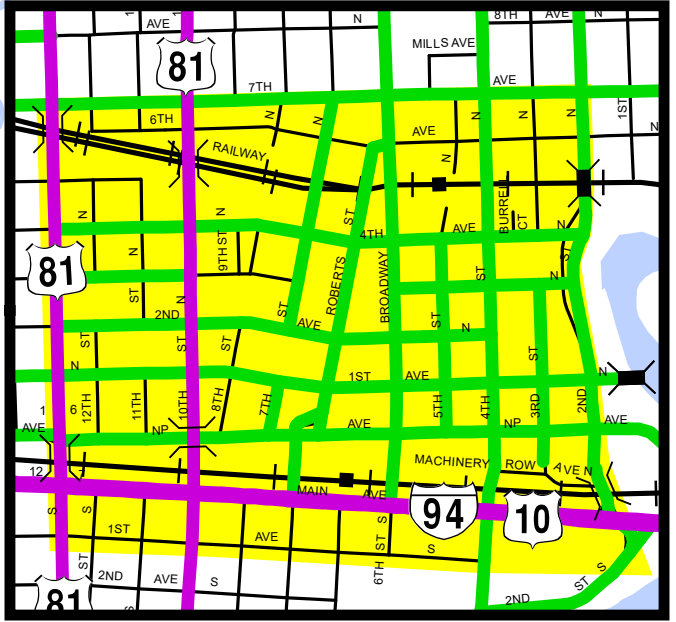
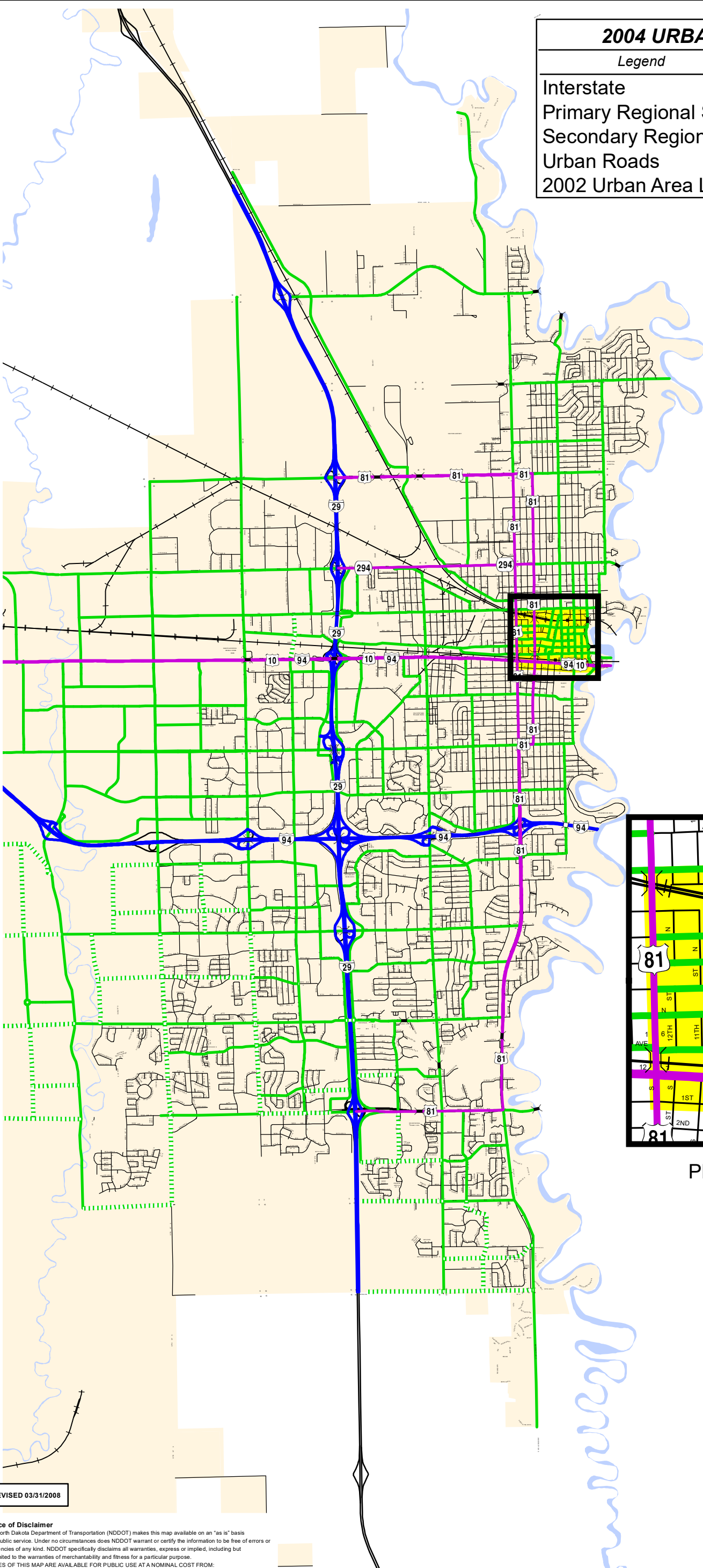
PREPARED BY  
 NORTH DAKOTA DEPARTMENT OF TRANSPORTATION  
 PLANNING AND PROGRAMMING DIVISION  
 IN COOPERATION WITH THE  
 U.S. DEPARTMENT OF TRANSPORTATION  
 FEDERAL HIGHWAY ADMINISTRATION





# 2004 URBAN ROAD SYSTEM MAP

Legend	Existing	Proposed
Interstate		
Primary Regional System		
Secondary Regional System		
Urban Roads		
2002 Urban Area Limits		

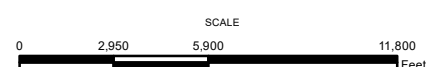


PROGRAM FOCUS AREA



2004  
 URBAN ROADS SYSTEM  
 2010 POPULATION 105,549  
**FARGO**  
 CASS COUNTY  
 NORTH DAKOTA

PREPARED BY  
 NORTH DAKOTA DEPARTMENT OF TRANSPORTATION  
 PLANNING AND PROGRAMMING DIVISION  
 IN COOPERATION WITH THE  
 U.S. DEPARTMENT OF TRANSPORTATION  
 FEDERAL HIGHWAY ADMINISTRATION



REVISED 03/31/2008

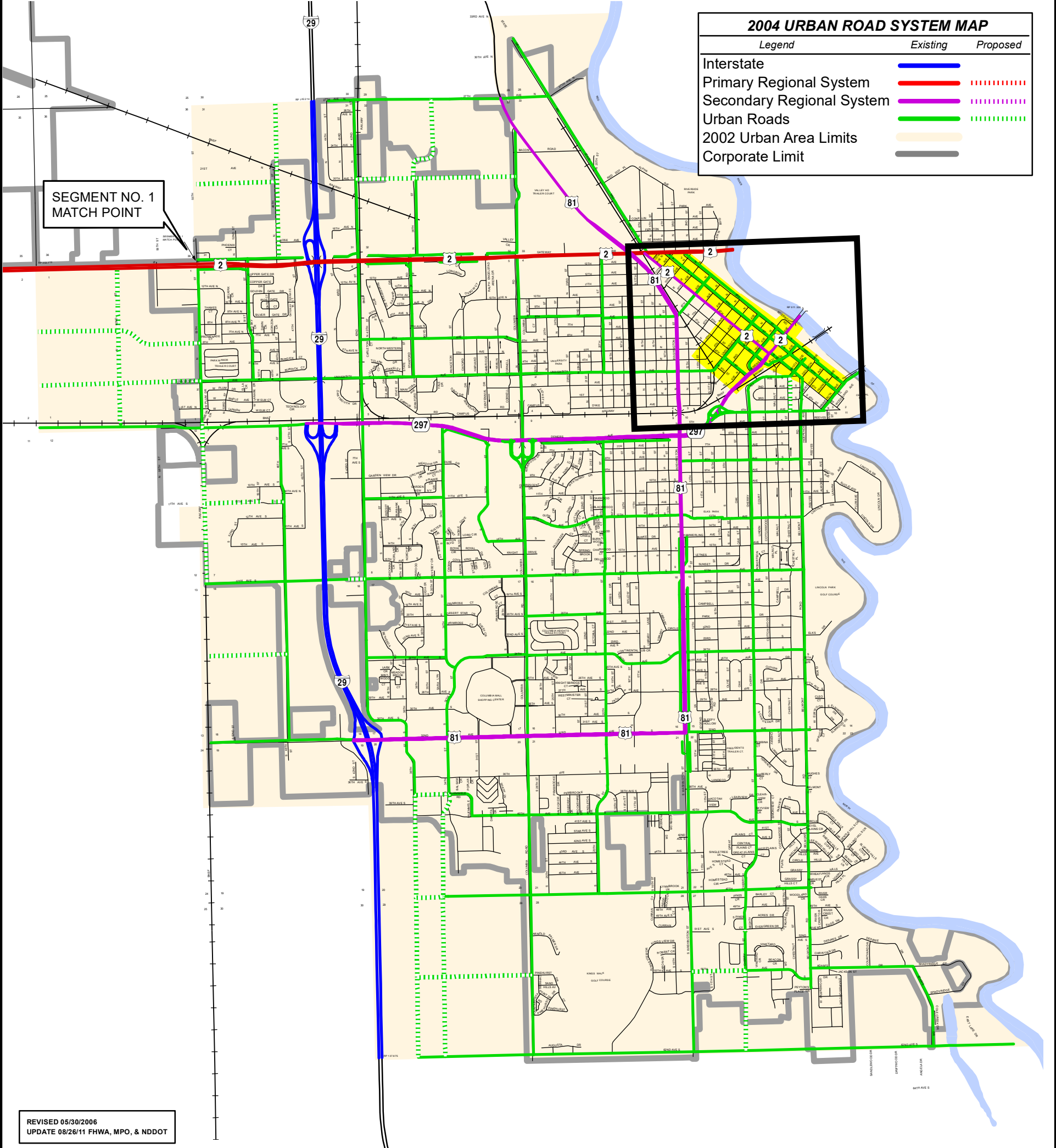
**Notice of Disclaimer**  
 The North Dakota Department of Transportation (NDDOT) makes this map available on an "as is" basis as a public service. Under no circumstances does NDDOT warrant or certify the information to be free of errors or deficiencies of any kind. NDDOT specifically disclaims all warranties, express or implied, including but not limited to the warranties of merchantability and fitness for a particular purpose.  
 COPIES OF THIS MAP ARE AVAILABLE FOR PUBLIC USE AT A NOMINAL COST FROM:  
 MAP SALES, ND DEPARTMENT OF TRANSPORTATION, 608 E. BLVD. AVE., BISMARCK, N.D. 58505-0700  
 F:\PLANNING\Steve\_Nelson\MXDS\2018\LikelyDowntownArea\_Urban\_Fargo.mxd

FARGO, NORTH DAKOTA

**2004 URBAN ROAD SYSTEM MAP**

Legend	Existing	Proposed
Interstate		
Primary Regional System		
Secondary Regional System		
Urban Roads		
2002 Urban Area Limits		
Corporate Limit		

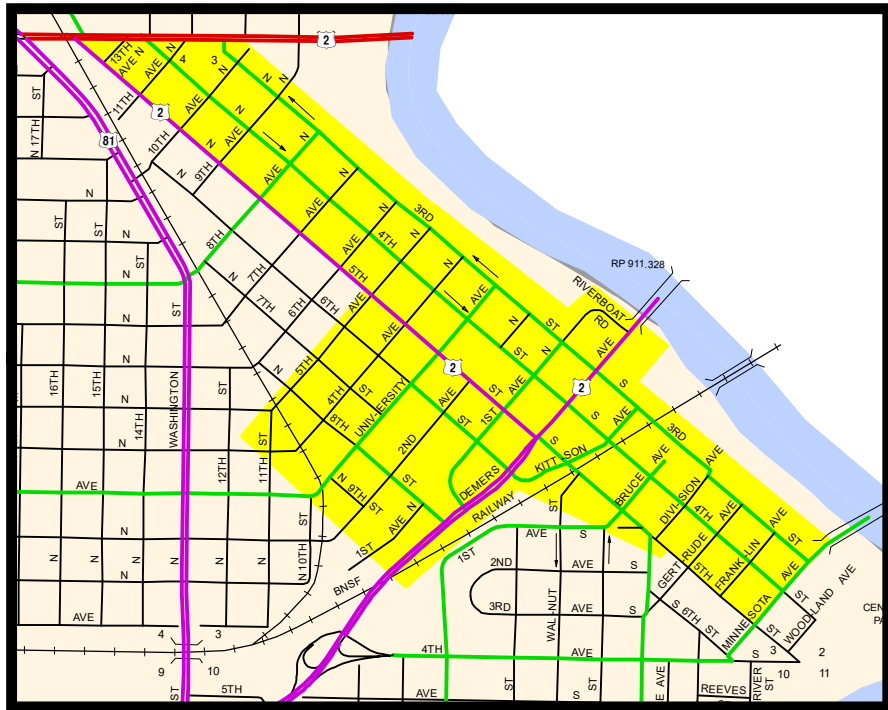
SEGMENT NO. 1  
MATCH POINT



REVISED 05/30/2006  
UPDATE 08/26/11 FHWA, MPO, & NDDOT

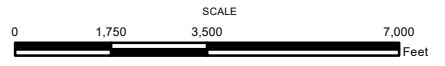
**Notice of Disclaimer**  
The North Dakota Department of Transportation (NDDOT) makes this map available on an "as is" basis as a public service. Under no circumstances does NDDOT warrant or certify the information to be free of errors or deficiencies of any kind. NDDOT specifically disclaims all warranties, express or implied, including but not limited to the warranties of merchantability and fitness for a particular purpose.  
COPIES OF THIS MAP ARE AVAILABLE FOR PUBLIC USE AT A NOMINAL COST FROM:  
MAP SALES, ND DEPARTMENT OF TRANSPORTATION, 608 E. BLVD. AVE., BISMARCK, N.D. 58505-0700

**PROGRAM FOCUS AREA**



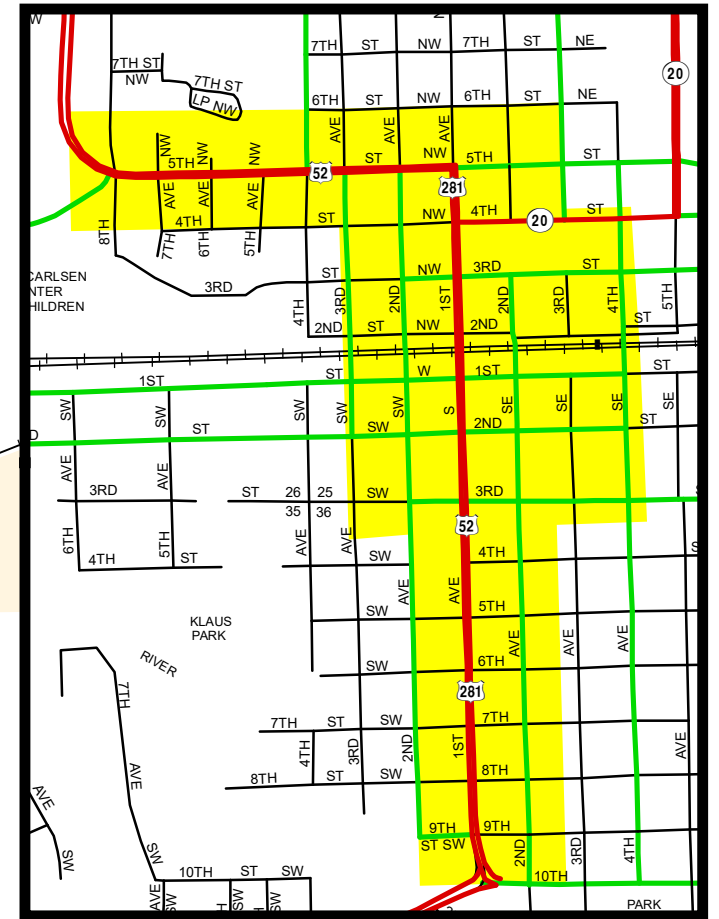
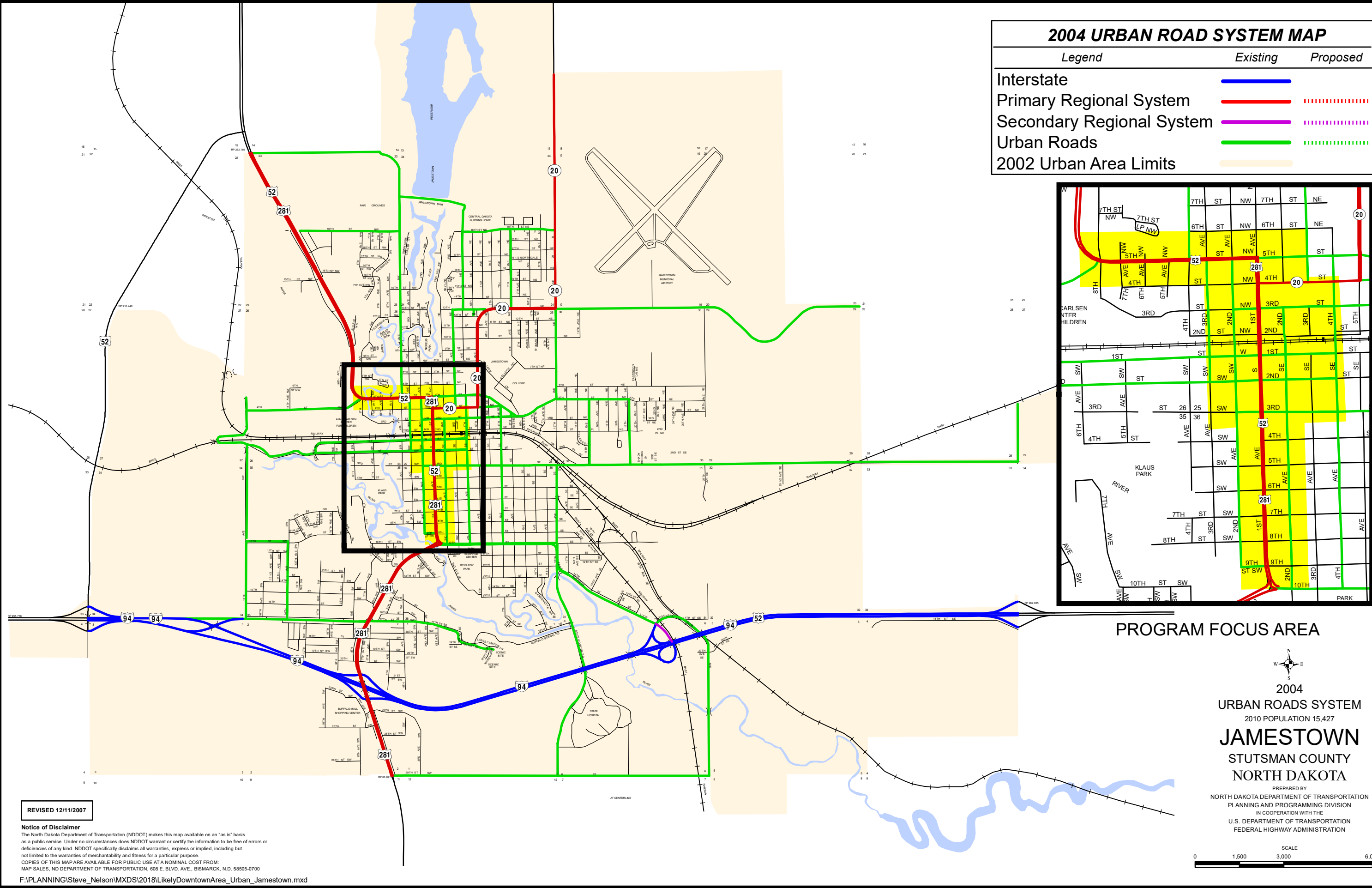
2004  
URBAN ROADS SYSTEM  
2010 POPULATION 52,838  
**GRAND FORKS**  
GRAND FORKS COUNTY  
NORTH DAKOTA

PREPARED BY  
NORTH DAKOTA DEPARTMENT OF TRANSPORTATION  
PLANNING AND PROGRAMMING DIVISION  
IN COOPERATION WITH THE  
U.S. DEPARTMENT OF TRANSPORTATION  
FEDERAL HIGHWAY ADMINISTRATION



# 2004 URBAN ROAD SYSTEM MAP

Legend	Existing	Proposed
Interstate		
Primary Regional System		
Secondary Regional System		
Urban Roads		
2002 Urban Area Limits		

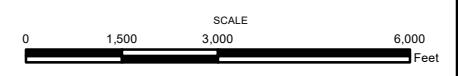


PROGRAM FOCUS AREA



2004  
 URBAN ROADS SYSTEM  
 2010 POPULATION 15,427  
**JAMESTOWN**  
 STUTSMAN COUNTY  
 NORTH DAKOTA

PREPARED BY  
 NORTH DAKOTA DEPARTMENT OF TRANSPORTATION  
 PLANNING AND PROGRAMMING DIVISION  
 IN COOPERATION WITH THE  
 U.S. DEPARTMENT OF TRANSPORTATION  
 FEDERAL HIGHWAY ADMINISTRATION

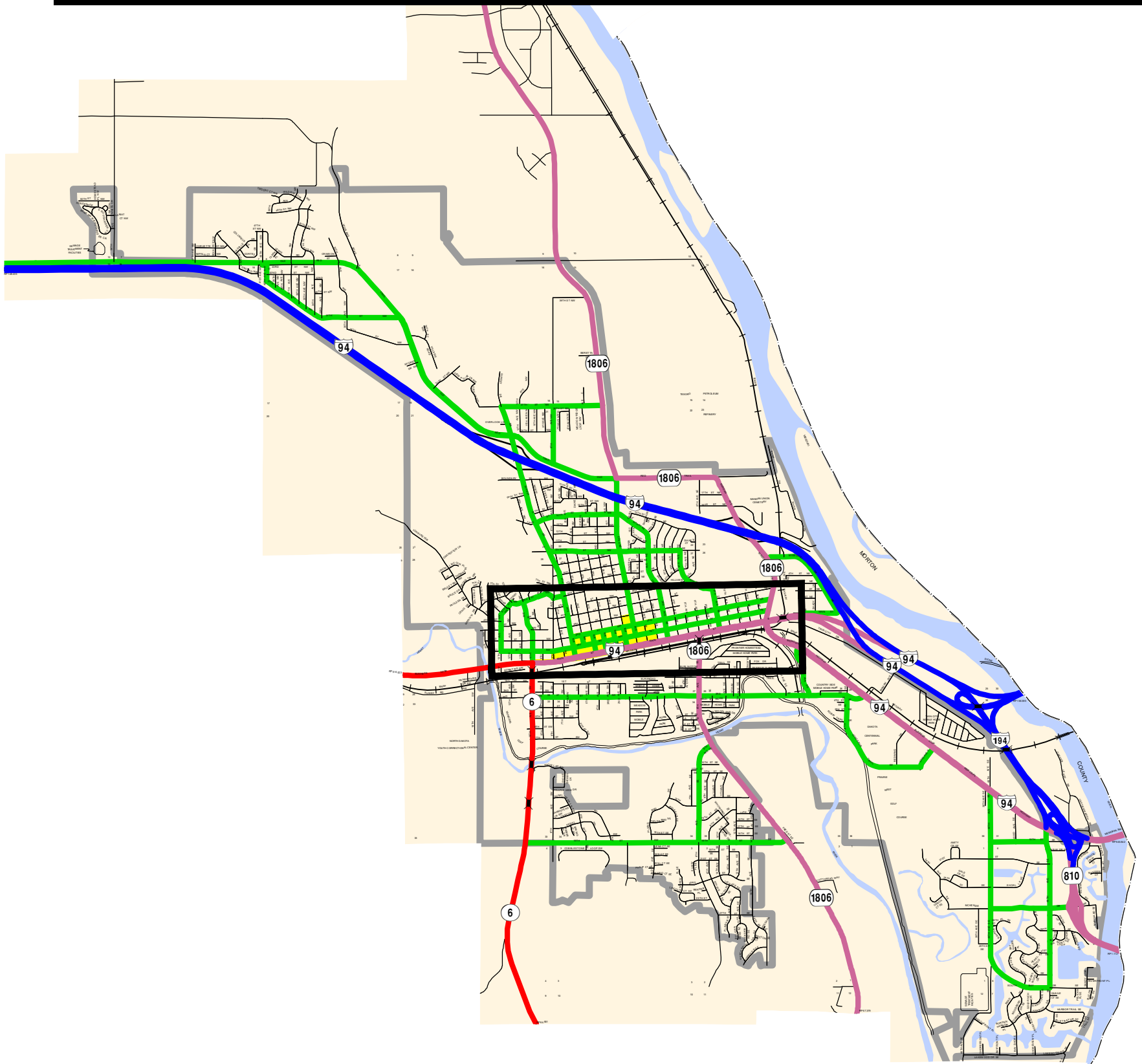
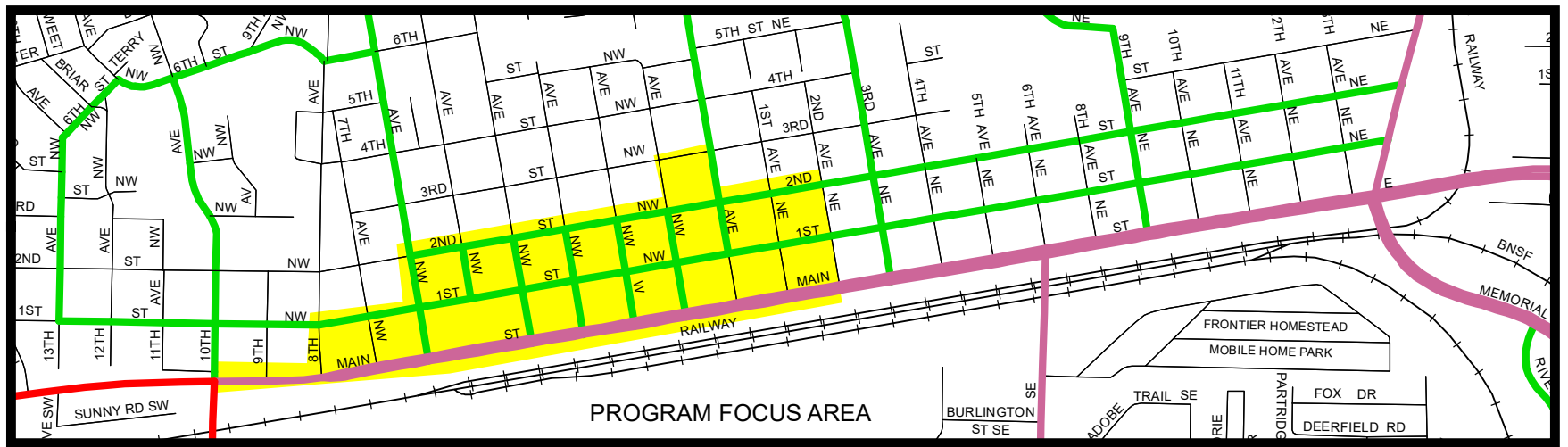


REVISED 12/11/2007

**Notice of Disclaimer**  
 The North Dakota Department of Transportation (NDDOT) makes this map available on an "as is" basis as a public service. Under no circumstances does NDDOT warrant or certify the information to be free of errors or deficiencies of any kind. NDDOT specifically disclaims all warranties, express or implied, including but not limited to the warranties of merchantability and fitness for a particular purpose.  
 COPIES OF THIS MAP ARE AVAILABLE FOR PUBLIC USE AT A NOMINAL COST FROM:  
 MAP SALES, ND DEPARTMENT OF TRANSPORTATION, 608 E. BLVD. AVE., BISMARCK, N.D. 58505-0700

F:\PLANNING\Steve\_Nelson\MXDS\2018\LikelyDowntownArea\_Urban\_Jamestown.mxd





**2016 URBAN ROAD SYSTEM MAP**

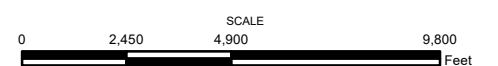
Legend	Existing
Interstate	
Primary Regional System	
Secondary Regional System	
Urban Roads	
2013 Urban Area Limits	
Corporate Limit	

**Notice of Disclaimer**  
 The North Dakota Department of Transportation (NDDOT) makes this map available on an "as is" basis as a public service. Under no circumstances does NDDOT warrant or certify the information to be free of errors or deficiencies of any kind. NDDOT specifically disclaims all warranties, express or implied, including but not limited to the warranties of merchantability and fitness for a particular purpose.  
 COPIES OF THIS MAP ARE AVAILABLE FOR PUBLIC USE AT A NOMINAL COST FROM:  
 MAP SALES, ND DEPARTMENT OF TRANSPORTATION, 608 E. BLVD. AVE., BISMARCK, N.D. 58505-0700



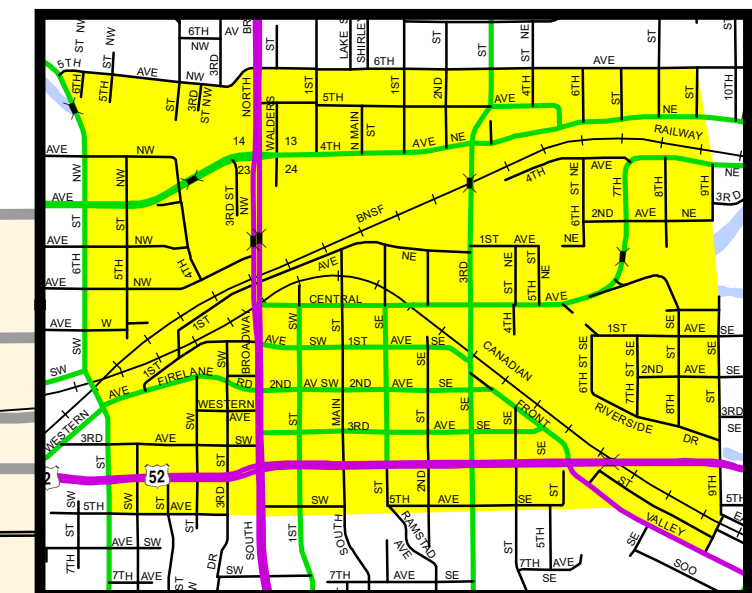
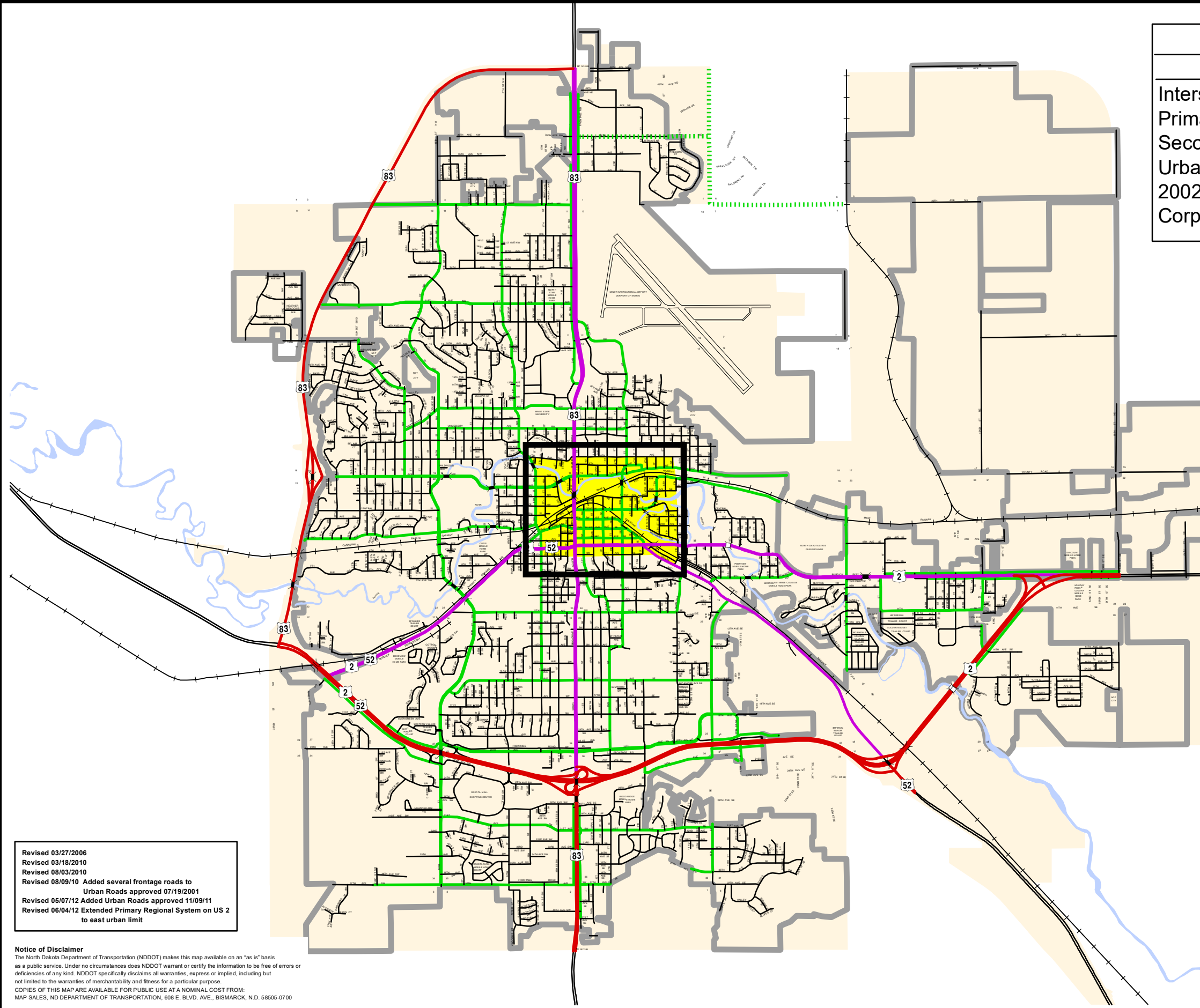
2016  
 URBAN ROADS SYSTEM  
 2010 POPULATION 18,331  
**MANDAN**  
 MORTON COUNTY  
 NORTH DAKOTA

PREPARED BY  
 NORTH DAKOTA DEPARTMENT OF TRANSPORTATION  
 PLANNING / ASSET MANAGEMENT DIVISION  
 IN COOPERATION WITH THE  
 U.S. DEPARTMENT OF TRANSPORTATION  
 FEDERAL HIGHWAY ADMINISTRATION



# 2004 URBAN ROAD SYSTEM MAP

Legend	Existing	Proposed
Interstate		
Primary Regional System		
Secondary Regional System		
Urban Roads		
2002 Urban Area Limits		
Corporate Limit		



PROGRAM FOCUS AREA

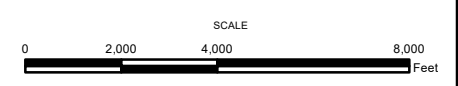
Revised 03/27/2006  
 Revised 03/18/2010  
 Revised 08/03/2010  
 Revised 08/09/10 Added several frontage roads to Urban Roads approved 07/19/2001  
 Revised 05/07/12 Added Urban Roads approved 11/09/11  
 Revised 06/04/12 Extended Primary Regional System on US 2 to east urban limit

**Notice of Disclaimer**  
 The North Dakota Department of Transportation (NDDOT) makes this map available on an "as is" basis as a public service. Under no circumstances does NDDOT warrant or certify the information to be free of errors or deficiencies of any kind. NDDOT specifically disclaims all warranties, express or implied, including but not limited to the warranties of merchantability and fitness for a particular purpose.  
 COPIES OF THIS MAP ARE AVAILABLE FOR PUBLIC USE AT A NOMINAL COST FROM:  
 MAP SALES, ND DEPARTMENT OF TRANSPORTATION, 608 E. BLVD. AVE., BISMARCK, N.D. 58505-0700



2004  
 URBAN ROADS SYSTEM  
 2010 POPULATION 40,888  
**MINOT**  
 WARD COUNTY  
 NORTH DAKOTA

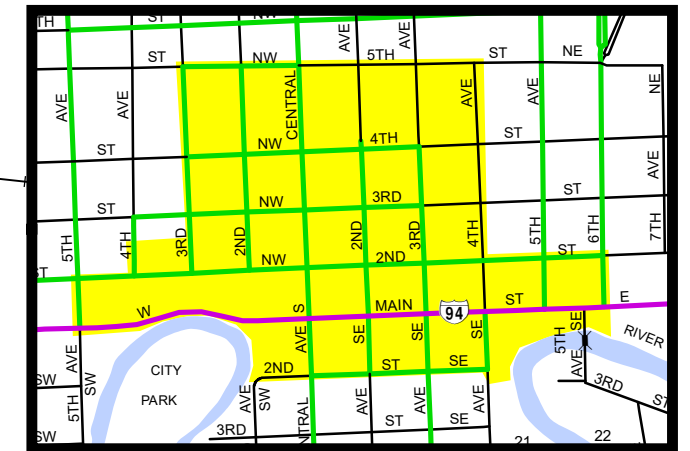
PREPARED BY  
 NORTH DAKOTA DEPARTMENT OF TRANSPORTATION  
 PLANNING AND PROGRAMMING DIVISION  
 IN COOPERATION WITH THE  
 U.S. DEPARTMENT OF TRANSPORTATION  
 FEDERAL HIGHWAY ADMINISTRATION



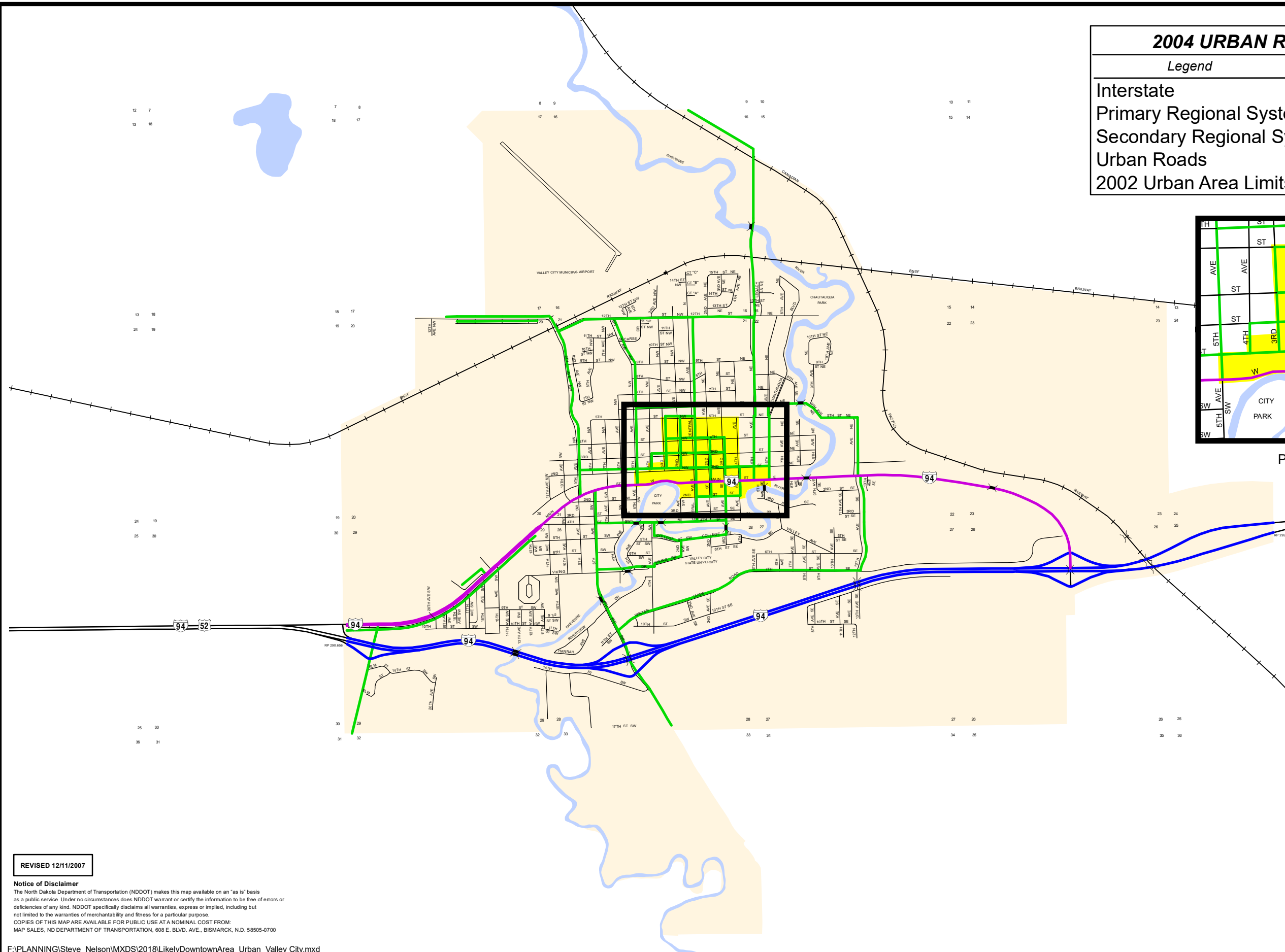


# 2004 URBAN ROAD SYSTEM MAP

Legend	Existing	Proposed
Interstate		
Primary Regional System		
Secondary Regional System		
Urban Roads		
2002 Urban Area Limits		

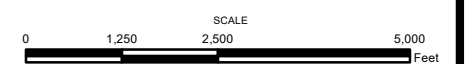


PROGRAM FOCUS AREA



2004  
 URBAN ROADS SYSTEM  
 2010 POPULATION 6,585  
**VALLEY CITY**  
 BARNES COUNTY  
 NORTH DAKOTA

PREPARED BY  
 NORTH DAKOTA DEPARTMENT OF TRANSPORTATION  
 PLANNING AND PROGRAMMING DIVISION  
 IN COOPERATION WITH THE  
 U.S. DEPARTMENT OF TRANSPORTATION  
 FEDERAL HIGHWAY ADMINISTRATION



REVISED 12/11/2007

**Notice of Disclaimer**  
 The North Dakota Department of Transportation (NDDOT) makes this map available on an "as is" basis as a public service. Under no circumstances does NDDOT warrant or certify the information to be free of errors or deficiencies of any kind. NDDOT specifically disclaims all warranties, express or implied, including but not limited to the warranties of merchantability and fitness for a particular purpose.  
 COPIES OF THIS MAP ARE AVAILABLE FOR PUBLIC USE AT A NOMINAL COST FROM:  
 MAP SALES, ND DEPARTMENT OF TRANSPORTATION, 608 E. BLVD. AVE., BISMARCK, N.D. 58505-0700

F:\PLANNING\Steve\_Nelson\MXDS\2018\LikelyDowntownArea\_Urban\_Valley City.mxd

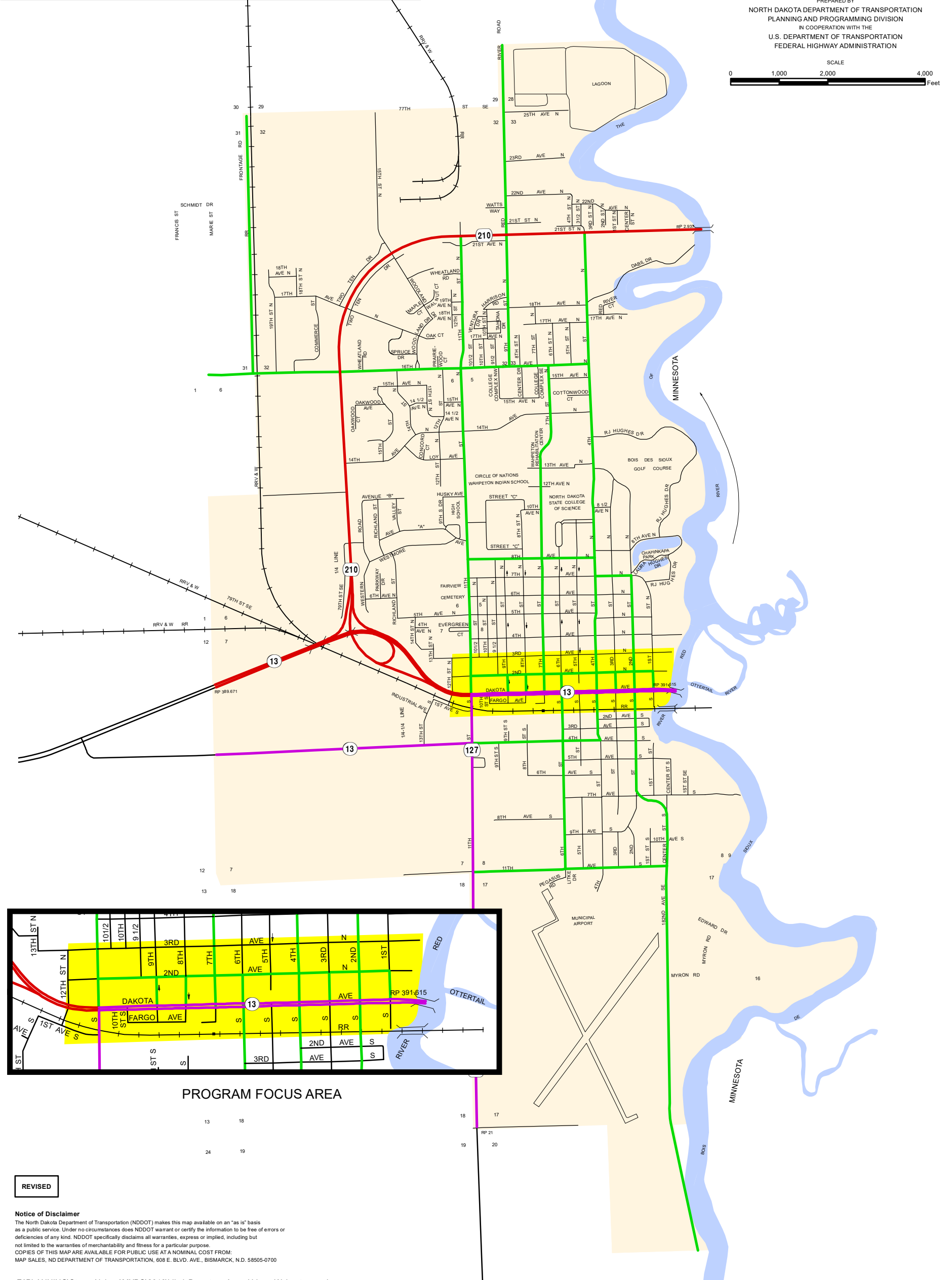
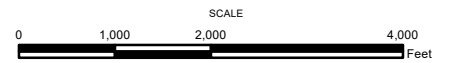
# 2004 URBAN ROAD SYSTEM MAP

Legend	Existing	Proposed
Interstate		
Primary Regional System		
Secondary Regional System		
Urban Roads		
2002 Urban Area Limits		



2004  
URBAN ROADS SYSTEM  
2010 POPULATION 7,766  
**WAHPETON**  
RICHLAND COUNTY  
NORTH DAKOTA

PREPARED BY  
NORTH DAKOTA DEPARTMENT OF TRANSPORTATION  
PLANNING AND PROGRAMMING DIVISION  
IN COOPERATION WITH THE  
U.S. DEPARTMENT OF TRANSPORTATION  
FEDERAL HIGHWAY ADMINISTRATION



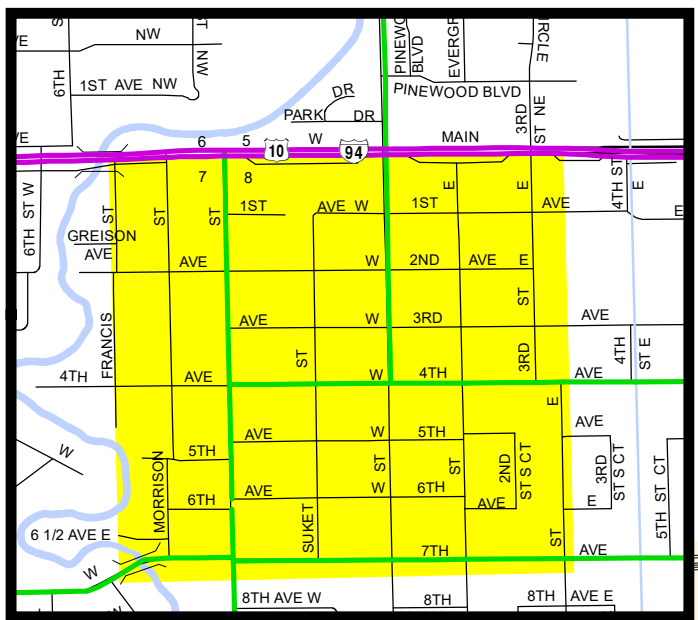
PROGRAM FOCUS AREA

REVISED

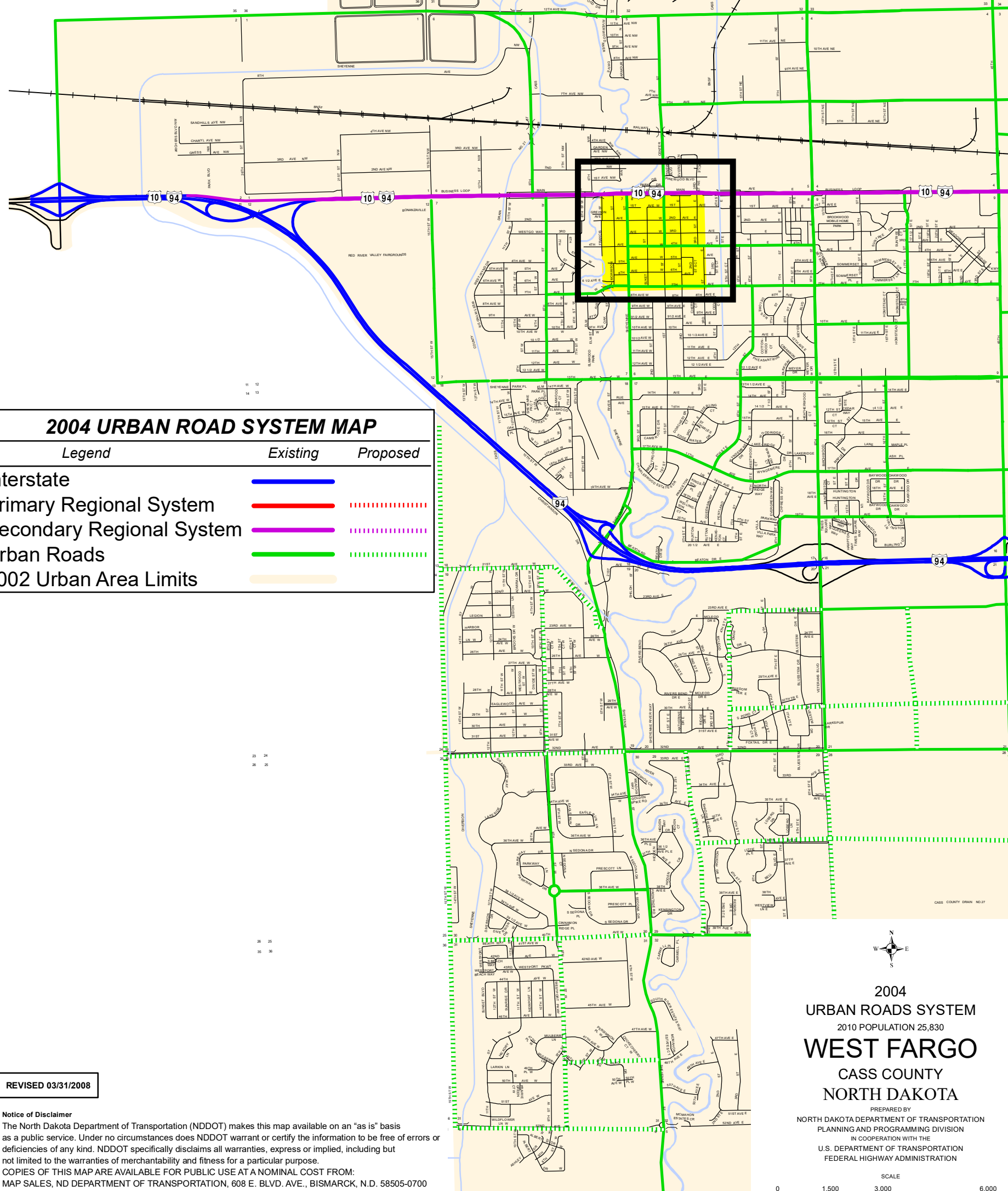
**Notice of Disclaimer**

The North Dakota Department of Transportation (NDDOT) makes this map available on an "as is" basis as a public service. Under no circumstances does NDDOT warrant or certify the information to be free of errors or deficiencies of any kind. NDDOT specifically disclaims all warranties, express or implied, including but not limited to the warranties of merchantability and fitness for a particular purpose. COPIES OF THIS MAP ARE AVAILABLE FOR PUBLIC USE AT A NOMINAL COST FROM: MAP SALES, ND DEPARTMENT OF TRANSPORTATION, 608 E. BLVD. AVE., BISMARCK, N.D. 58505-0700

F:\PLANNING\Steve\_Nelson\MXDS\2018\LikelyDowntownArea\_Urban\_Wahpeton.mxd



PROGRAM FOCUS AREA



**2004 URBAN ROAD SYSTEM MAP**

Legend	Existing	Proposed
Interstate		
Primary Regional System		
Secondary Regional System		
Urban Roads		
2002 Urban Area Limits		

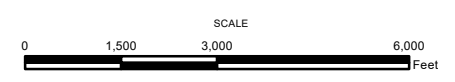
REVISED 03/31/2008

**Notice of Disclaimer**  
 The North Dakota Department of Transportation (NDDOT) makes this map available on an "as is" basis as a public service. Under no circumstances does NDDOT warrant or certify the information to be free of errors or deficiencies of any kind. NDDOT specifically disclaims all warranties, express or implied, including but not limited to the warranties of merchantability and fitness for a particular purpose.  
 COPIES OF THIS MAP ARE AVAILABLE FOR PUBLIC USE AT A NOMINAL COST FROM:  
 MAP SALES, ND DEPARTMENT OF TRANSPORTATION, 608 E. BLVD. AVE., BISMARCK, N.D. 58505-0700



2004  
 URBAN ROADS SYSTEM  
 2010 POPULATION 25,830  
**WEST FARGO**  
 CASS COUNTY  
 NORTH DAKOTA

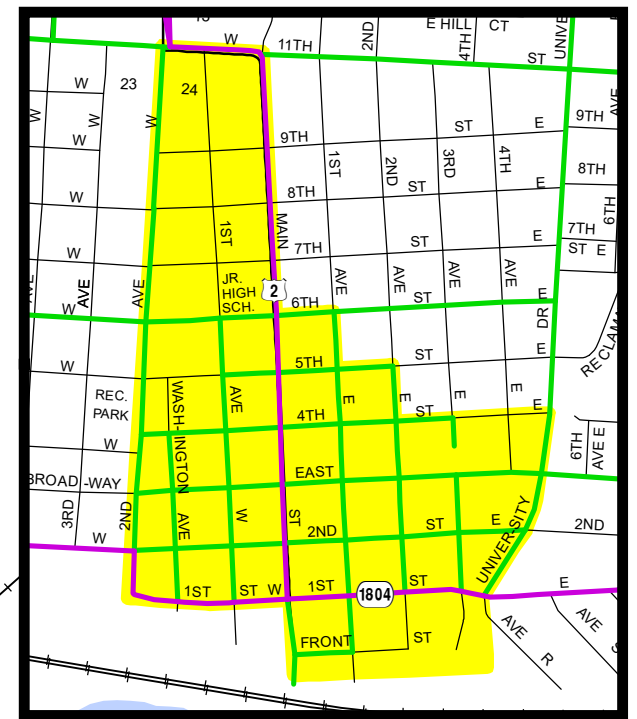
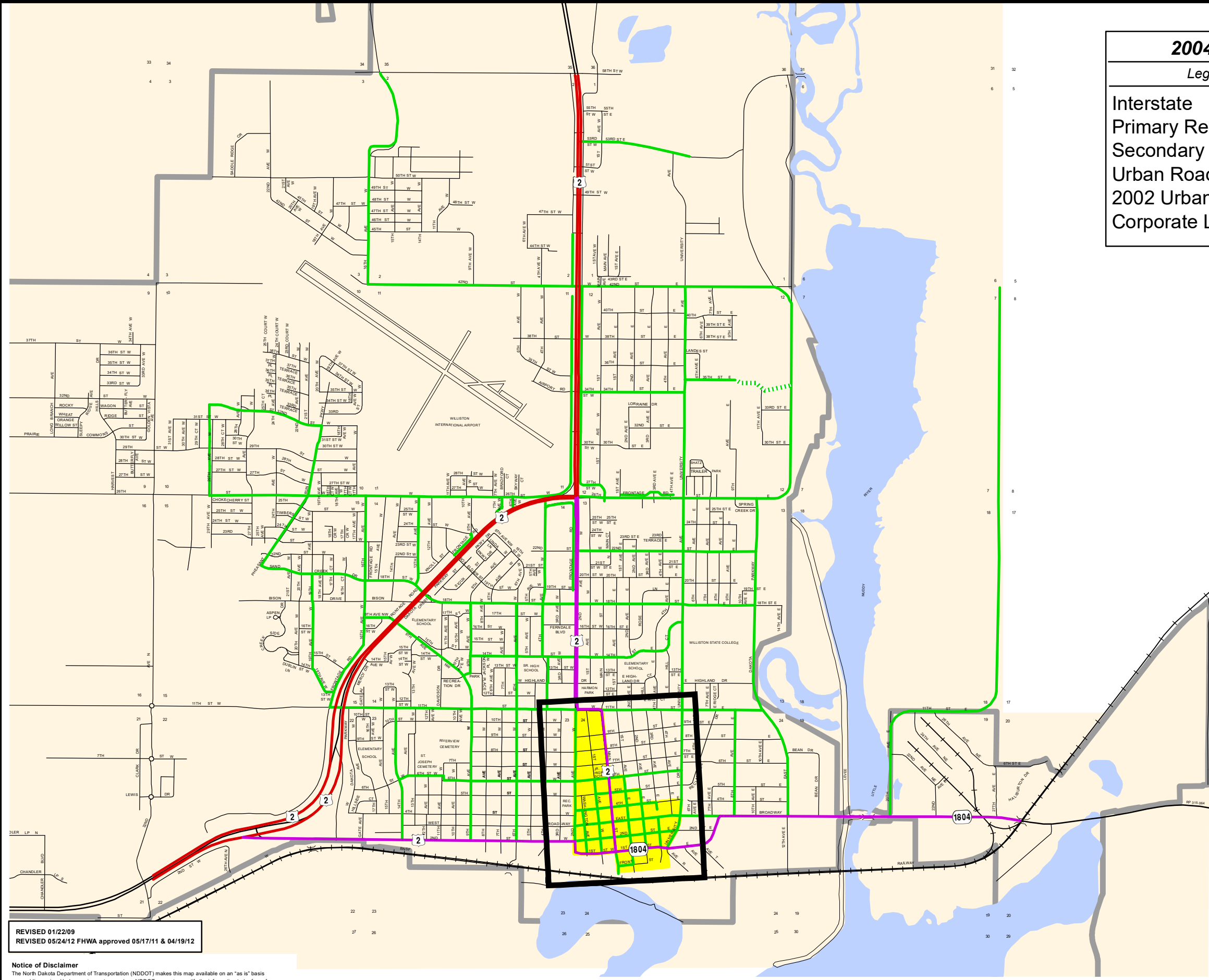
PREPARED BY  
 NORTH DAKOTA DEPARTMENT OF TRANSPORTATION  
 PLANNING AND PROGRAMMING DIVISION  
 IN COOPERATION WITH THE  
 U.S. DEPARTMENT OF TRANSPORTATION  
 FEDERAL HIGHWAY ADMINISTRATION





# 2004 URBAN ROAD SYSTEM MAP

Legend	Existing	Proposed
Interstate		
Primary Regional System		
Secondary Regional System		
Urban Roads		
2002 Urban Area Limits		
Corporate Limit		

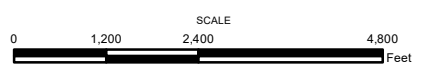


PROGRAM FOCUS AREA



2004  
URBAN ROADS SYSTEM  
2010 POPULATION 14,716  
**WILLISTON**  
WILLIAMS COUNTY  
NORTH DAKOTA

PREPARED BY  
NORTH DAKOTA DEPARTMENT OF TRANSPORTATION  
PLANNING AND PROGRAMMING DIVISION  
IN COOPERATION WITH THE  
U.S. DEPARTMENT OF TRANSPORTATION  
FEDERAL HIGHWAY ADMINISTRATION



REVISED 01/22/09  
REVISED 05/24/12 FHWA approved 05/17/11 & 04/19/12

**Notice of Disclaimer**  
The North Dakota Department of Transportation (NDDOT) makes this map available on an "as is" basis as a public service. Under no circumstances does NDDOT warrant or certify the information to be free of errors or deficiencies of any kind. NDDOT specifically disclaims all warranties, express or implied, including but not limited to the warranties of merchantability and fitness for a particular purpose.

"F:\PLANNING\Steve\_Nelson\MXDS\2018\LikelyDowntownArea\_Urban\_Williston.mxd"

COPIES OF THIS MAP ARE AVAILABLE FOR PUBLIC USE AT A NOMINAL COST FROM:  
MAP SALES, ND DEPARTMENT OF TRANSPORTATION, 608 E. BLVD. AVE., BISMARCK, N.D. 58505-0700

WILLISTON, NORTH DAKOTA