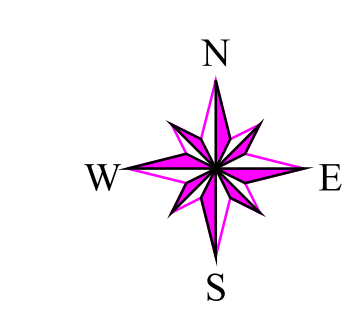
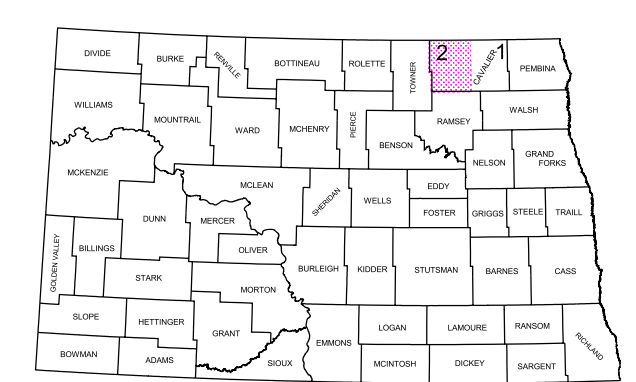
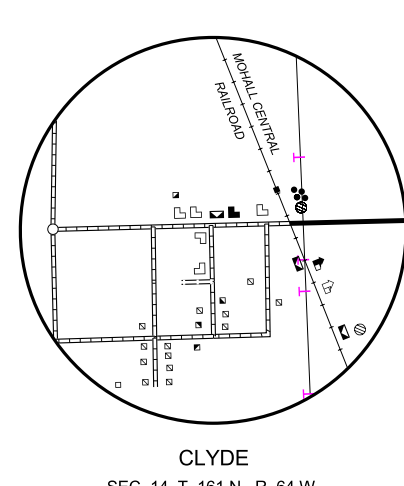
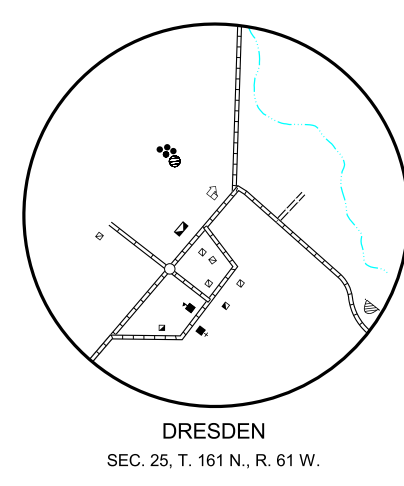
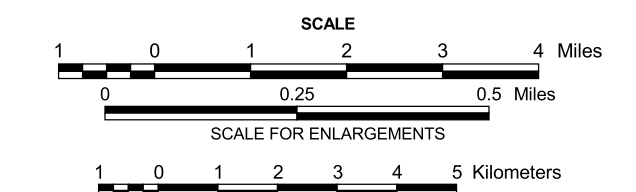


- NAME AND LOCATION OF ORGANIZED CIVIL TOWNSHIPS THOSE UNORGANIZED ARE SO NOTED
- T. 164 N.-R. 64 W. CYPRESS
 - T. 164 N.-R. 63 W. BYRON
 - T. 163 N.-R. 63 W. BYRON
 - T. 164 N.-R. 62 W. LINDEN
 - T. 163 N.-R. 62 W. LINDEN
 - T. 164 N.-R. 61 W. DRESDEN
 - T. 163 N.-R. 61 W. DRESDEN
 - T. 164 N.-R. 60 W. MT. CARMEL
 - T. 163 N.-R. 60 W. MT. CARMEL
 - T. 164 N.-R. 59 W. WEST HOPE
 - T. 163 N.-R. 59 W. WEST HOPE
 - T. 164 N.-R. 58 W. HOPE
 - T. 163 N.-R. 58 W. HOPE
 - T. 164 N.-R. 57 W. FREMONT
 - T. 163 N.-R. 57 W. FREMONT
 - T. 164 N.-R. 56 W. FREMONT
 - T. 163 N.-R. 56 W. FREMONT
 - T. 162 N.-R. 64 W. GLENLA
 - T. 162 N.-R. 63 W. GREY
 - T. 162 N.-R. 62 W. MINTO
 - T. 162 N.-R. 61 W. SOUTH DRESDEN
 - T. 162 N.-R. 60 W. LANGDON
 - T. 162 N.-R. 59 W. HARVEY
 - T. 162 N.-R. 58 W. LOMA
 - T. 162 N.-R. 57 W. NORTH OLGA
 - T. 163 N.-R. 57 W. NORTH OLGA
 - T. 161 N.-R. 57 W. SOUTH OLGA
 - T. 161 N.-R. 64 W. BRUCE
 - T. 161 N.-R. 63 W. HURON
 - T. 161 N.-R. 62 W. MOSCOW
 - T. 161 N.-R. 61 W. WATERLOO
 - T. 161 N.-R. 60 W. ELGIN
 - T. 161 N.-R. 59 W. MANILLA
 - T. 161 N.-R. 58 W. HAY
 - T. 160 N.-R. 64 W. TRIER
 - T. 160 N.-R. 63 W. HENDERSON
 - T. 160 N.-R. 62 W. GORDON
 - T. 160 N.-R. 61 W. NORTH LOMA
 - T. 160 N.-R. 60 W. PERRY
 - T. 160 N.-R. 59 W. EASBY
 - T. 160 N.-R. 58 W. ALMA
 - T. 160 N.-R. 57 W. EAST ALMA
 - T. 159 N.-R. 64 W. SEVERT
 - T. 159 N.-R. 63 W. BANNER
 - T. 159 N.-R. 62 W. STORLIE
 - T. 159 N.-R. 61 W. BILLINGS
 - T. 159 N.-R. 60 W. NEKOMA
 - T. 159 N.-R. 59 W. OSNABROCK
 - T. 159 N.-R. 58 W. OSFORD
 - T. 159 N.-R. 57 W. MONTRSE



CAVALIER COUNTY



2006

COPIES OF THIS MAP ARE AVAILABLE FOR PUBLIC USE AT A NOMINAL COST FROM:
MAP SALES, N.D. DEPT. OF TRANSPORTATION, 606 E. BLVD. AVE., BISMARCK, N.D. 58505-0700

BASED ON AERIAL PHOTOGRAPHY OF 1959
GROUND INVENTORY OF 2006
AERIAL INVENTORY OF 2006

UNIVERSAL TRANSVERSE MERCATOR ZONE 14
NORTH AMERICAN DATUM 83