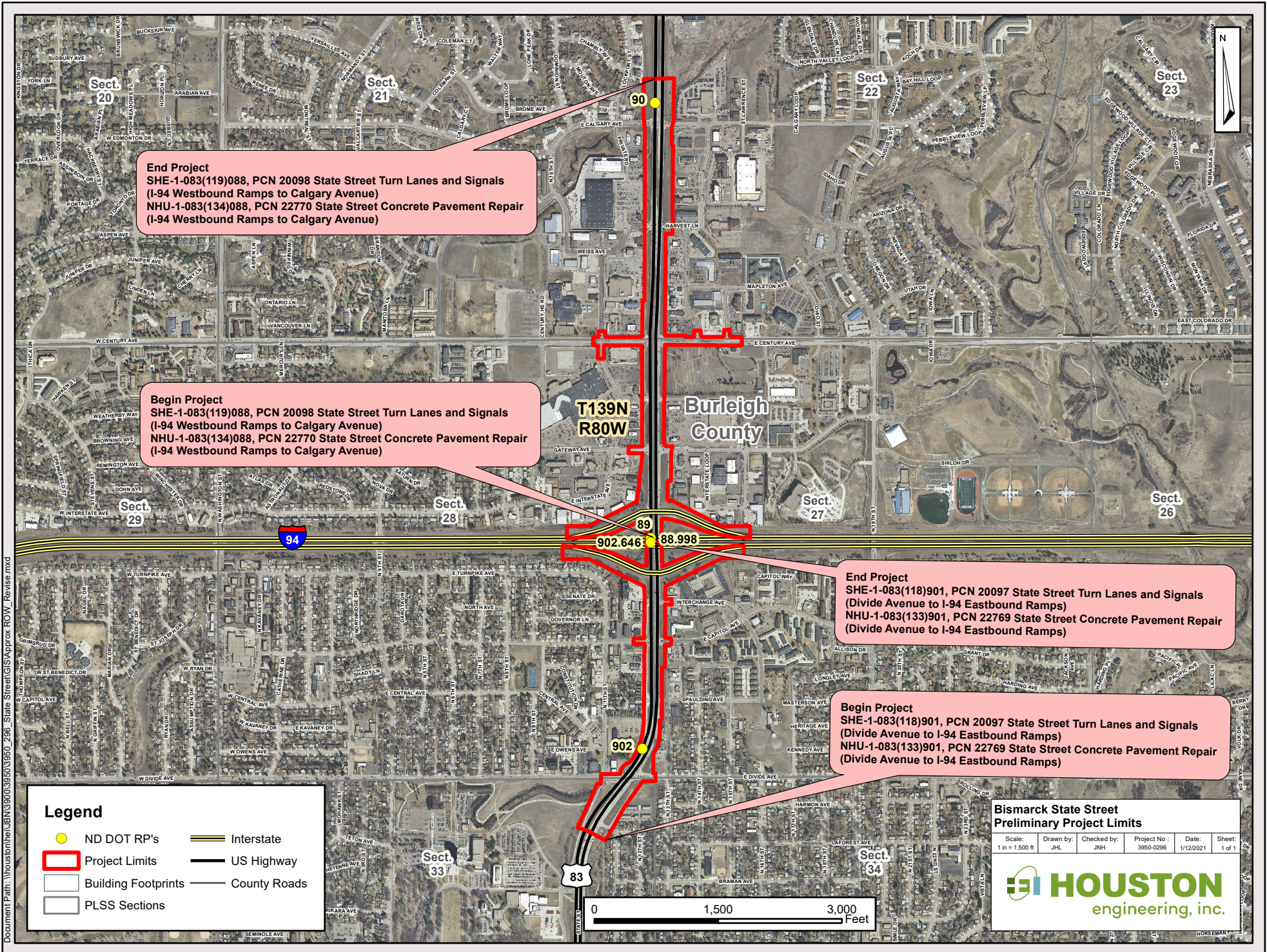


Document Path: \\houston\houston\BIS\3900\3950\3950\_296\_State Street\GIS\Approx ROW\_Revise.mxd



**End Project**  
SHE-1-083(119)088, PCN 20098 State Street Turn Lanes and Signals (I-94 Westbound Ramps to Calgary Avenue)  
NHU-1-083(134)088, PCN 22770 State Street Concrete Pavement Repair (I-94 Westbound Ramps to Calgary Avenue)

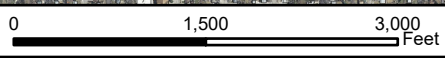
**Begin Project**  
SHE-1-083(119)088, PCN 20098 State Street Turn Lanes and Signals (I-94 Westbound Ramps to Calgary Avenue)  
NHU-1-083(134)088, PCN 22770 State Street Concrete Pavement Repair (I-94 Westbound Ramps to Calgary Avenue)

**End Project**  
SHE-1-083(118)901, PCN 20097 State Street Turn Lanes and Signals (Divide Avenue to I-94 Eastbound Ramps)  
NHU-1-083(133)901, PCN 22769 State Street Concrete Pavement Repair (Divide Avenue to I-94 Eastbound Ramps)

**Begin Project**  
SHE-1-083(118)901, PCN 20097 State Street Turn Lanes and Signals (Divide Avenue to I-94 Eastbound Ramps)  
NHU-1-083(133)901, PCN 22769 State Street Concrete Pavement Repair (Divide Avenue to I-94 Eastbound Ramps)

**Legend**

- ND DOT RP's
- Project Limits
- Building Footprints
- PLSS Sections
- Interstate
- US Highway
- County Roads



**Bismarck State Street Preliminary Project Limits**

Scale: 1 in = 1,500 ft  
 Drawn by: JHL  
 Checked by: JNH  
 Project No: 3950-0296  
 Date: 1/12/2021  
 Sheet: 1 of 1

**HOUSTON**  
engineering, inc.