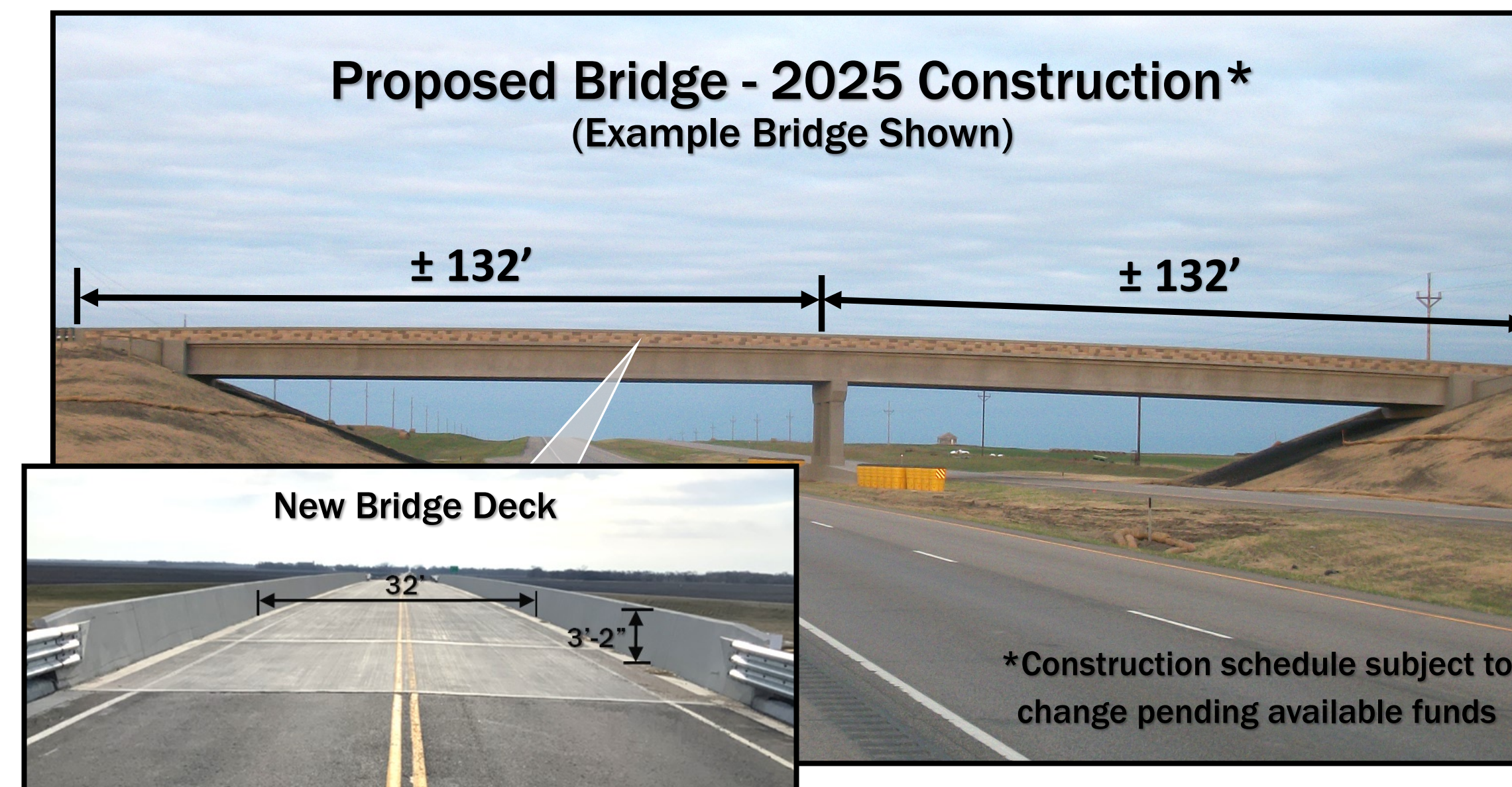
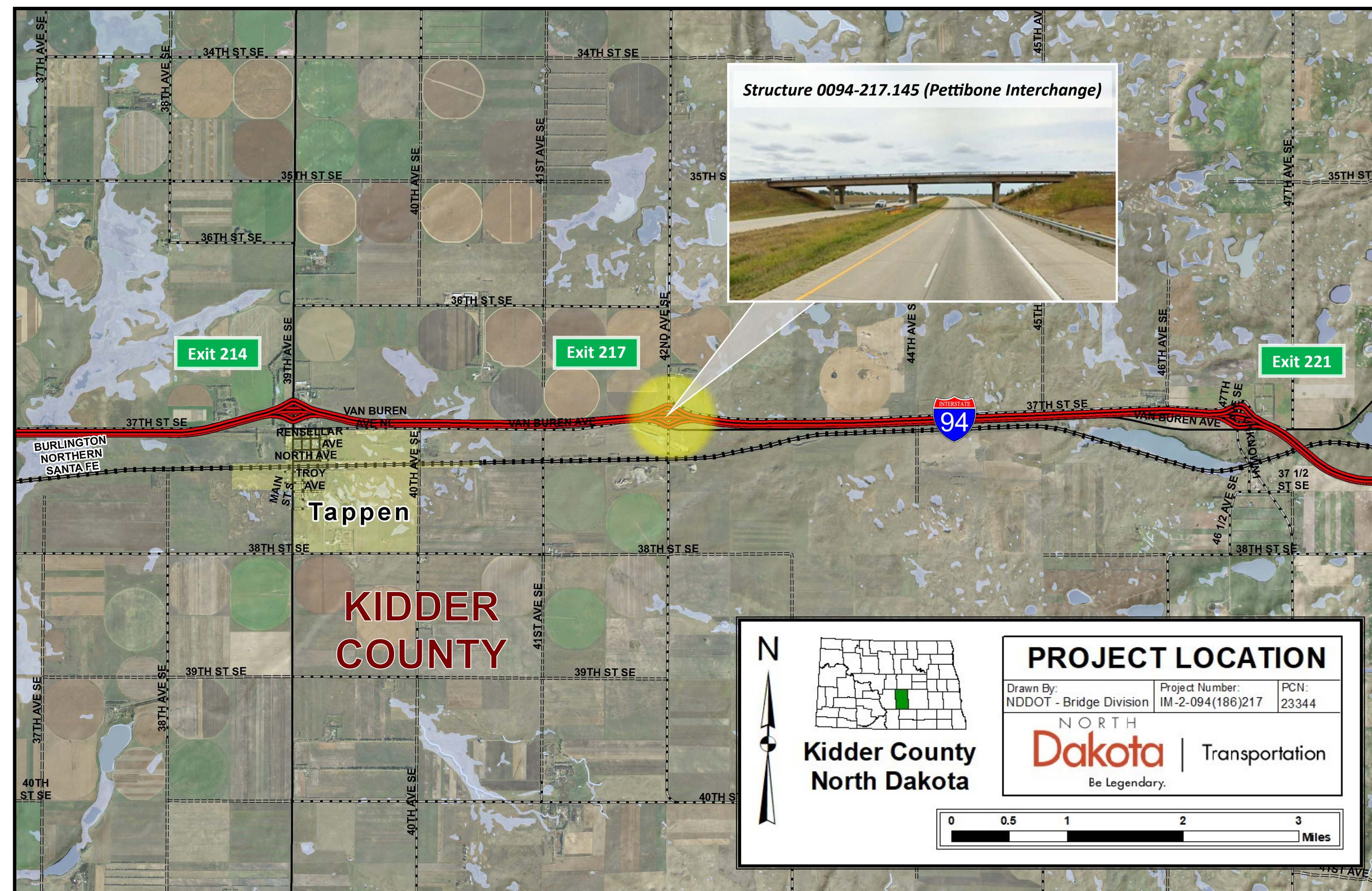
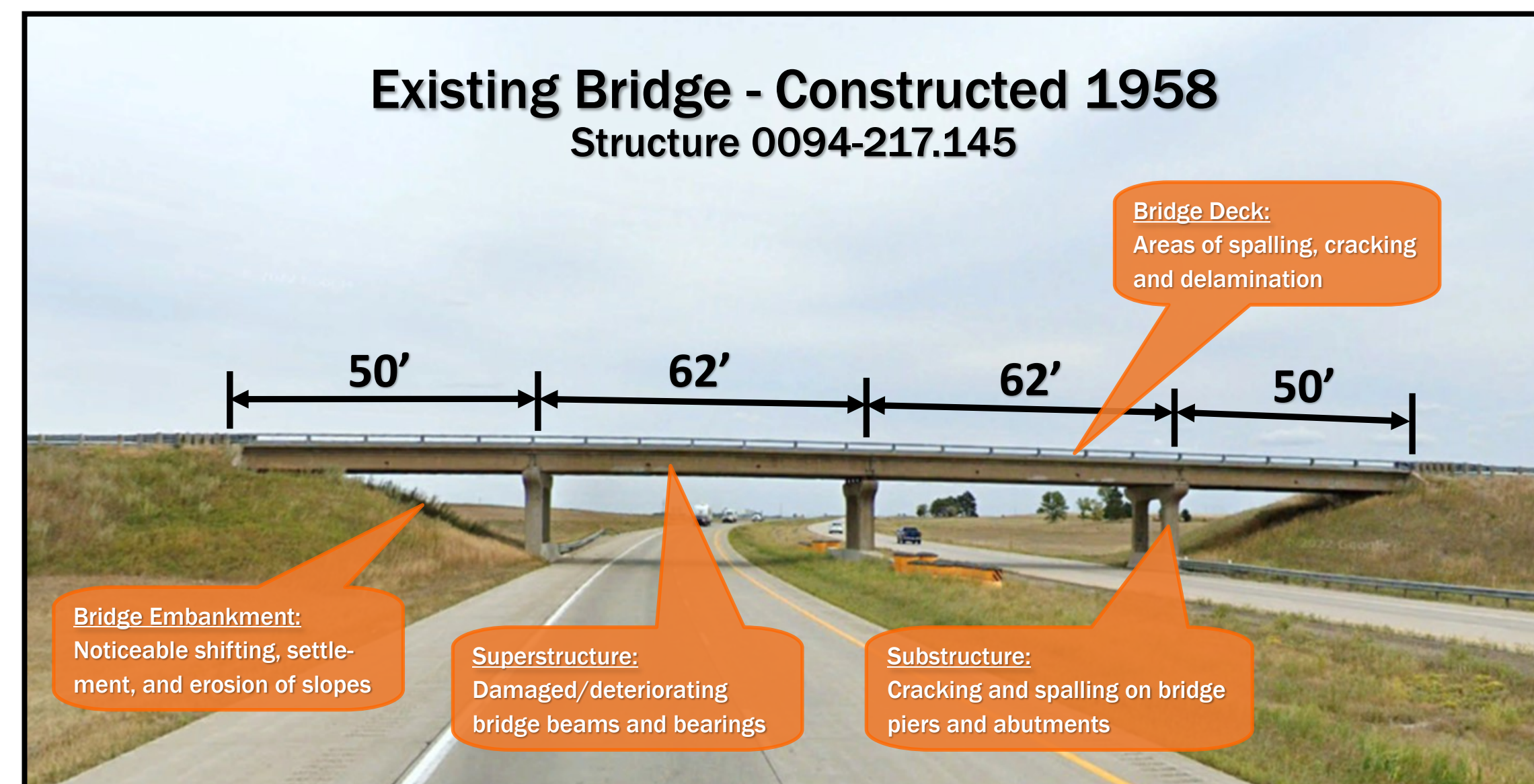


NORTH DAKOTA DEPARTMENT OF TRANSPORTATION

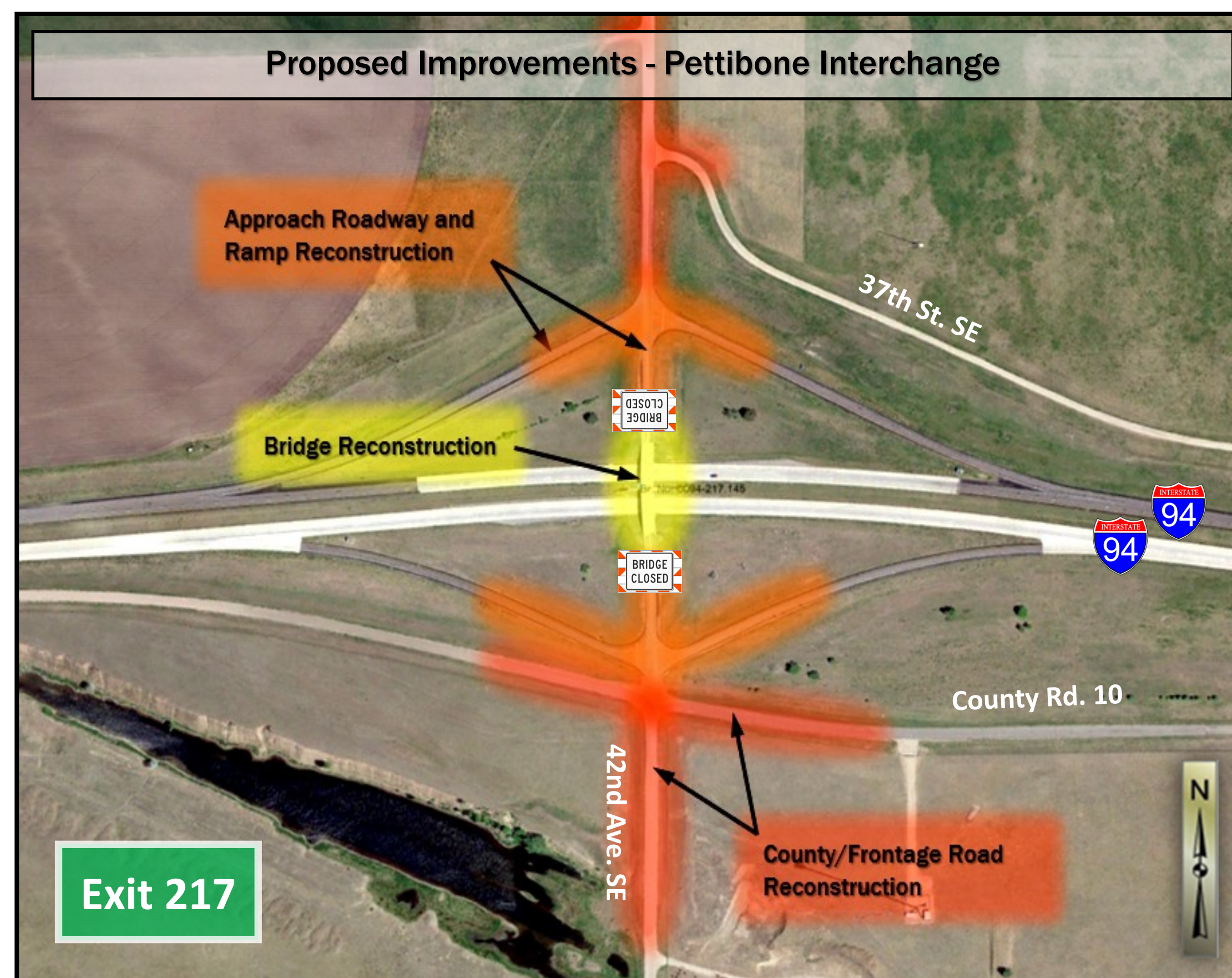
PUBLIC INPUT MEETING - TAPPEN, ND



- **Proposed Bridge**
 - Spans – 2
 - Length – ±264 ft.
 - Width – 32 ft.
 - Railing Height – 3'2"
 - Vert. Clearance - 16'10"
 - Construct New Slope Protection
 - New bridge will reduce maintenance and have improved design features



- **Existing Bridge**
 - Spans – 4
 - Length – 224 ft.
 - Width – 24 ft.
 - Railing Height – 2'9"
 - Vert. Clearance - 16'10"
 - No Slope Protection
 - Bridge components have deteriorated requiring attention



- 1) Close bridge and detour traffic as necessary
- 2) Remove existing bridge and construct new bridge
- 3) Reconstruct bridge approach roadways, interchange ramps, and county/frontage roads (roads will remain open to traffic)
- 4) Reopen bridge to traffic and complete project

EXHIBIT 1

PROJECT OVERVIEW

I-94 PETTIBONE INTERCHANGE BRIDGE RECONSTRUCTION

