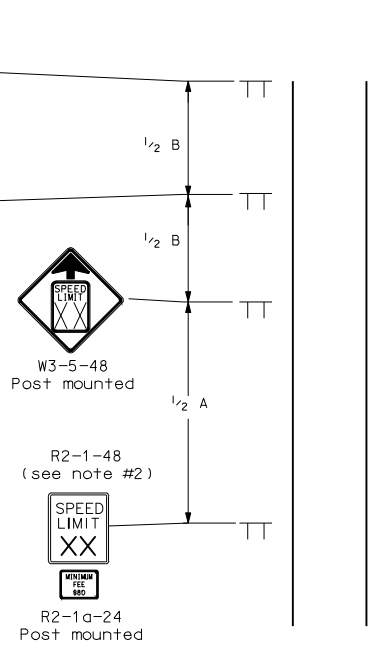
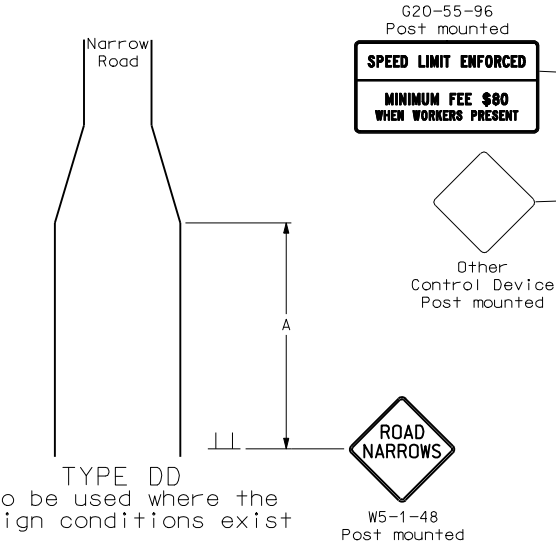
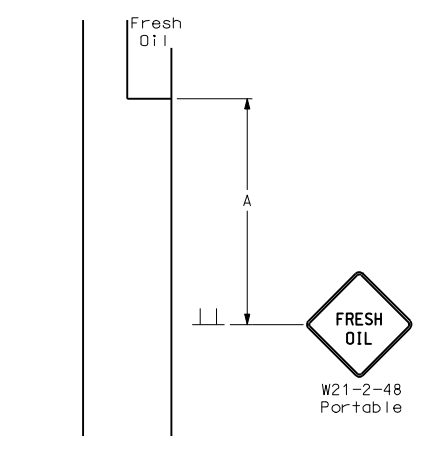
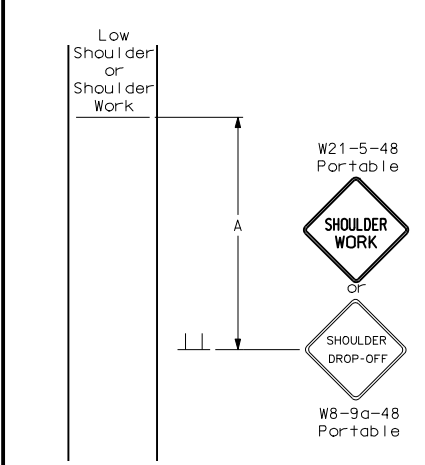
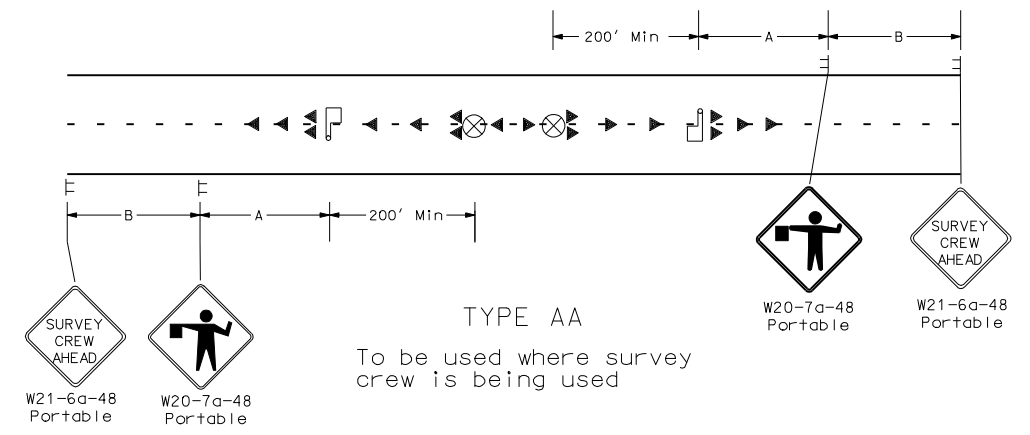
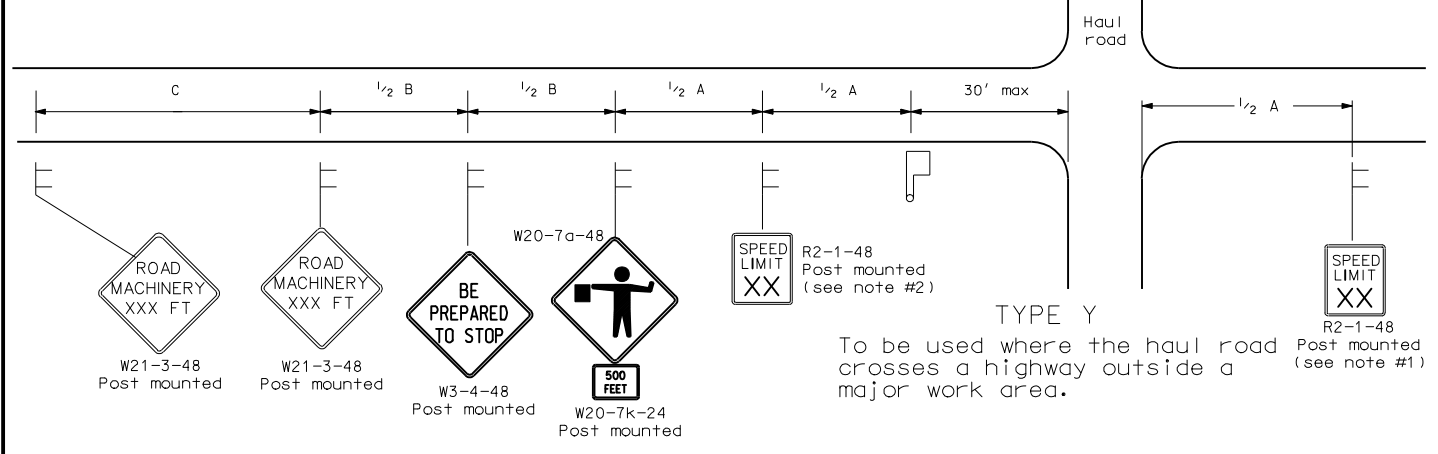
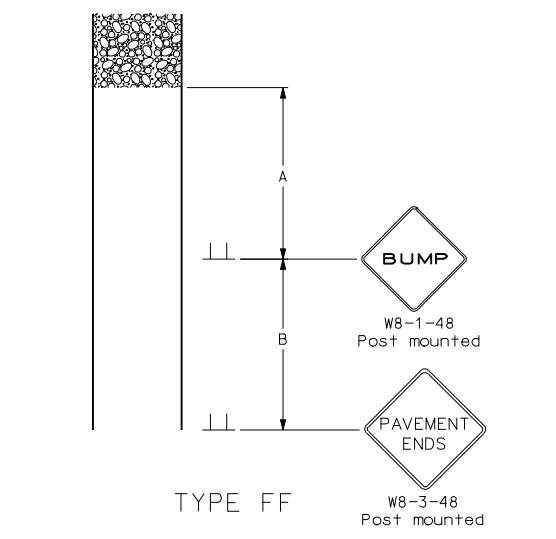
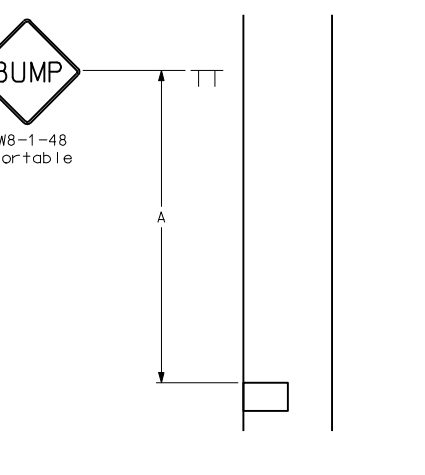
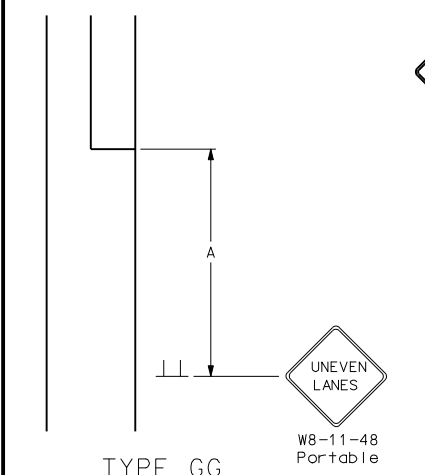


CONSTRUCTION SIGN AND BARRICADE LOCATION DETAILS



- Notes
- The speed limit shall be re-established. The exact speed limit shall be determined in the field, dependent on location and conditions.
  - The reduced speed limit shall be determined dependent on the in place speed limit before construction. The speed limit reduction should not exceed 10 mph below the existing speed limit, unless the design speed of the work zone feature has been reduced below the 10 mph. In this case, the speed limit reduction shall not exceed 30 MPH. Where speed limits are to be reduced more than 30 MPH, a second speed limit sign shall be installed with the desired speed reduction but shall not exceed 30 MPH. The second speed limit sign shall be placed at 1/2 B.
  - When warning signs are used in urban areas and the signs are not portable, flags shall be installed. The flags shall be 24 inches square, mounted perpendicular to the edges of the diamond sign, and at such a distance above the edge so that when the flag is limp it will not touch the sign. Rural areas will not require flags.
  - Existing speed limit signs within a reduced speed zone shall be covered.
  - The contractor has the option of using portable sign supports in lieu of post mounted sign as shown on the standard drawings as specified in section 704.03 C.
  - G20-55-96 or R2-1a-24 signs are not required if this standard is part of other traffic control layouts, or the work is less than 5 days.



KEY

	Type I barricade		Work area
	Type II barricade		Flagger
	Type III barricade		Sequencing arrow panel
	Sign		Type A delineator or vertical panels back to back
	Delineator drum		
	Cones		

ADVANCE WARNING SIGN SPACING

Road Type	Distance Between Signs Min. (ft)		
	A	B	C
Urban - Low Speed (30 mph or less)	150	150	150
Urban - Low Speed (over 30 to 40 mph)	280	280	280
Urban - High Speed (over 40 mph to 50 mph)	360	360	360
Rural - High Speed (over 50 mph to 65 mph)	720	720	720
Urban Expressway and Freeway (55 mph to 60 mph)	850	1350	2200
Rural Expressway and Freeway (70 mph to 75 mph)	1000	1500	2640
Interstate/4-Lane Divided (Maintenance and Surveying)	750	1000	1500

NORTH DAKOTA DEPARTMENT OF TRANSPORTATION 10-1-86

REVISIONS

DATE	CHANGE
09-03-96	70 mph
01-31-97	Sign spacing
10-01-99	General Revision
07-19-02	Revised spacing of Speed Limit Signs
01-30-03	Pavement end sign
07-25-03	Revised R2-1a
04-01-04	Rev. fee sign & warning sign spacing. Add note 6
12-01-04	PE Stamp added
06-29-05	Replaced R2-5a with W3-5, Rev. Adv. Warning Table, Rev. Note 2
07-05-05	Changed W20-7b to W3-4

This document was originally issued and sealed by Mark S Gaydos Registration Number PE-4518, on 07/05/05 and the original document is stored at the North Dakota Department of Transportation