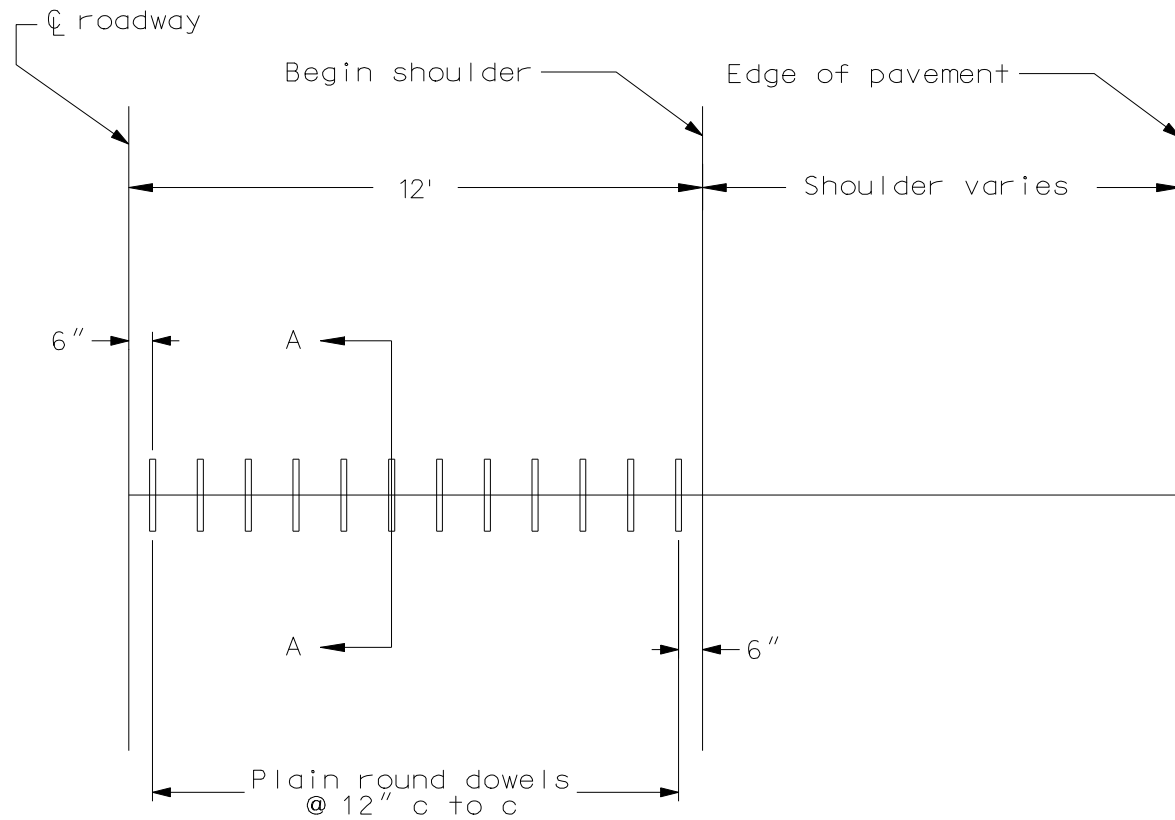
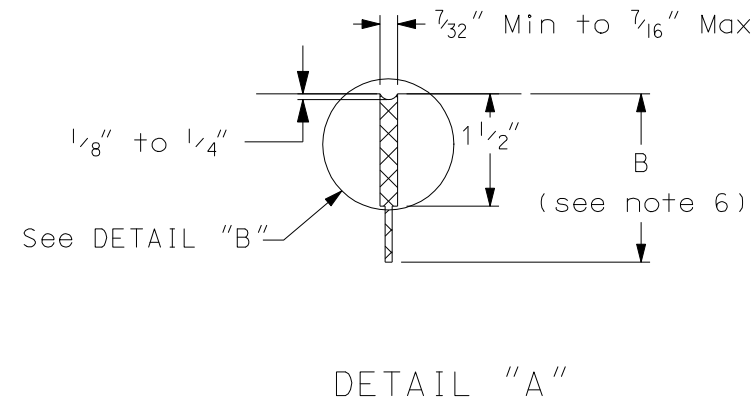


TRANSVERSE CONTRACTION JOINT DETAILS



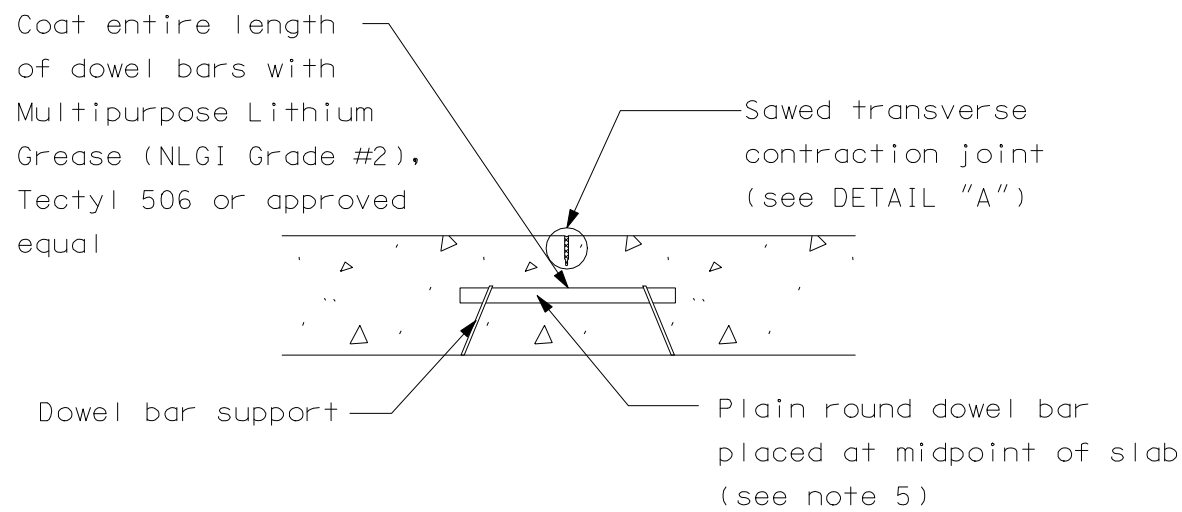
CONTRACTION JOINT DOWEL ASSEMBLY
(1/2 roadway shown)



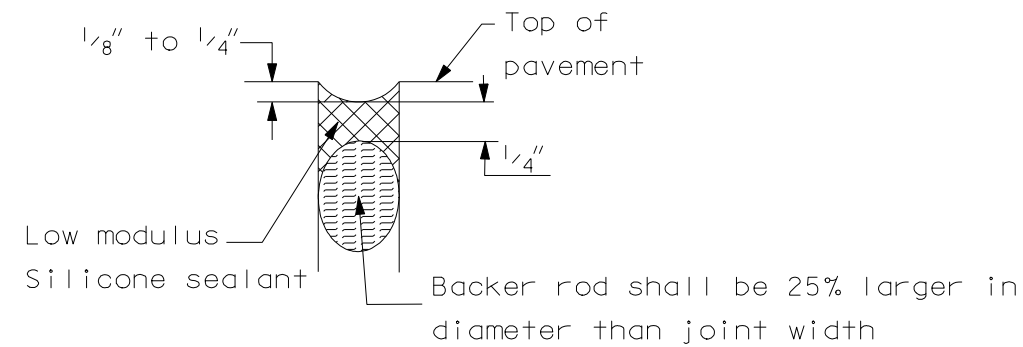
DETAIL "A"

Notes

1. Preformed compression joint seals of other shapes may be used. The shape and dimensions must be approved by the Engineer. Preformed inserts used to form grooves for transverse joints will not be allowed.
2. The joint seal details apply to both doweled and non-doweled (plain) transverse joints.
3. All dowels shall be epoxy coated in accordance with AASHTO M-254 TYPE B.
4. T = Thickness of pavement.
5. Dowels
 - Pavement 10" or less:
 - 1 1/4" X 18" plain round
 - Pavement greater than 10":
 - 1 1/2" X 18" plain round
6. $B = T/4 + 1/4"$ for AE or YE
non-dowelled concrete pavement
or
 $T/3$ for high early or doweled concrete pavement



SECTION A-A



DETAIL "B"

NORTH DAKOTA DEPARTMENT OF TRANSPORTATION 10-1-88	
REVISIONS	
DATE	CHANGE
04-01-93	Jt. Dim.
03-09-94	Dowel coating
08-30-01	General revisions
12-01-04	PE Stamp added removed pay items
02-16-07	Dowel coating
09-12-07	Removed Shoulder Dowels & Revised Joint Details

This document was originally issued and sealed by **Mark S Gaydos**, Registration Number **PE- 4518**, on **09/12/07** and the original document is stored at the North Dakota Department of Transportation