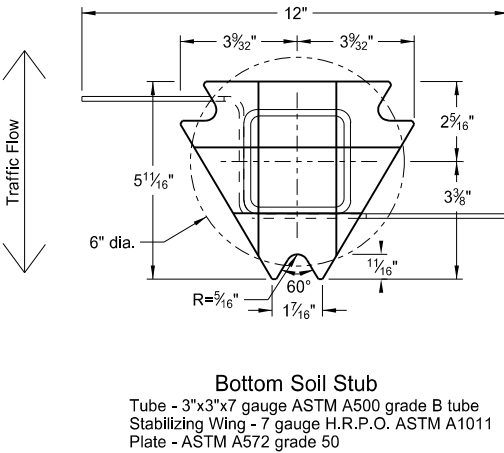
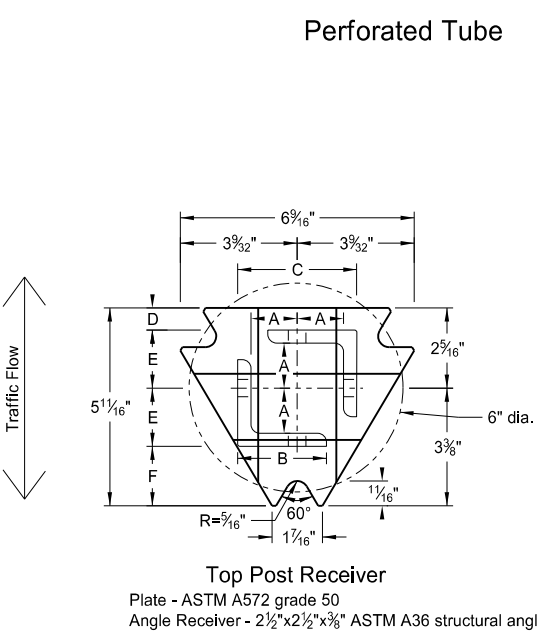
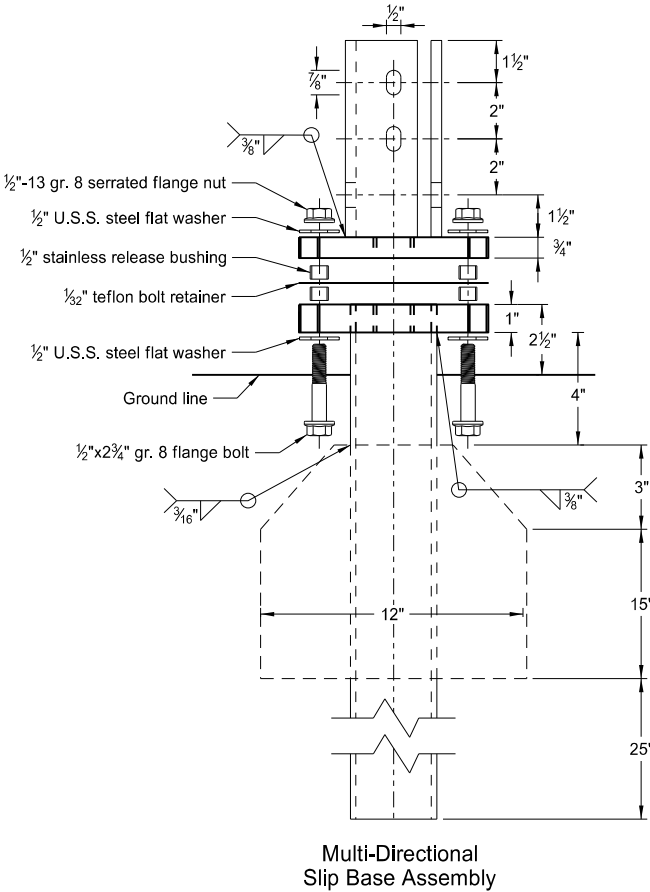


Perforated Tube

- Notes:
1. Torque slip base bolts as specified by manufacturer.
  2. Use anchor with 43.9 KSI yield strength and 59.3 KSI tensile strength.
  3. Provide 4" vertical clearance for anchor or breakaway base. Measure the 4"x60" measurement above and below post location and back and ahead of post.
  4. In concrete sidewalk, use same anchor without wings.
  5. Provide more than 7' between the first and fourth posts of a four post sign.

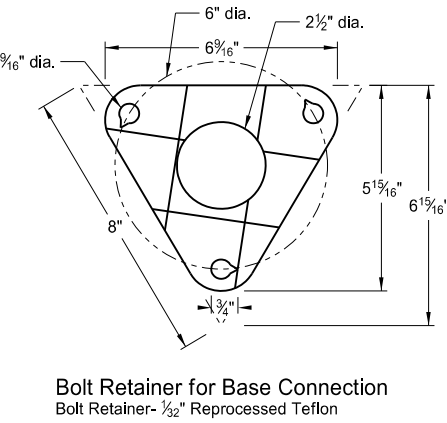
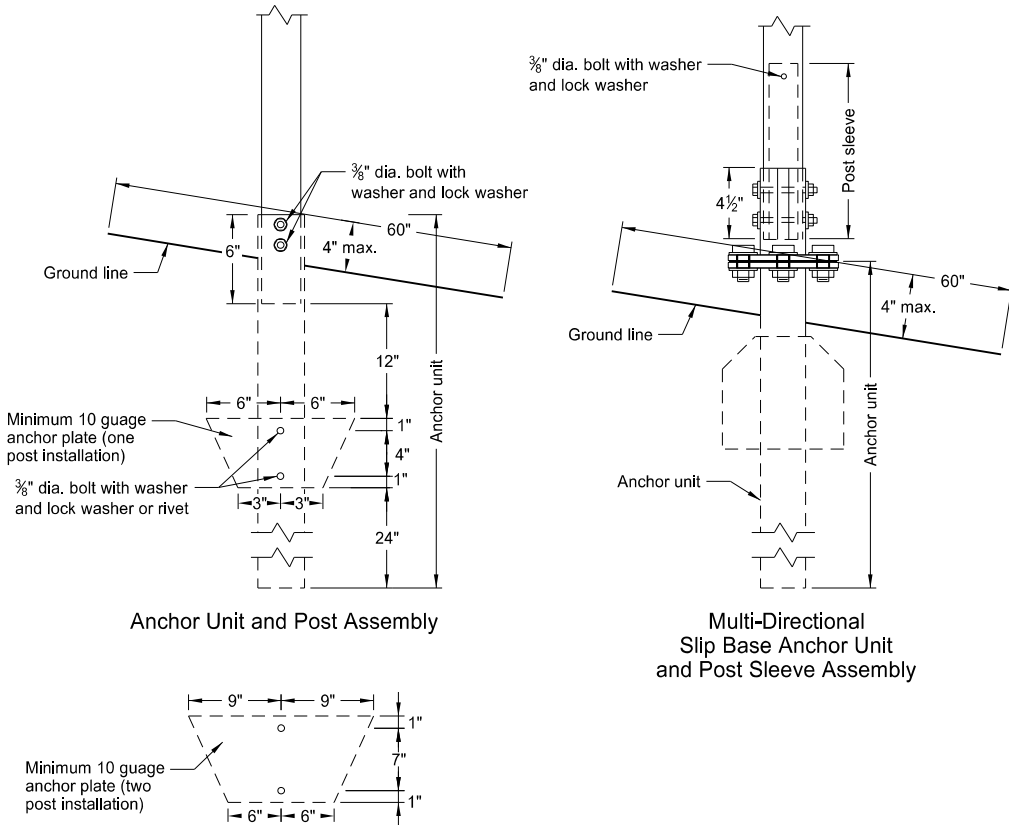


Telescoping Perforated Tube						
Number of Posts	Post Size in.	Wall Thick-ness Gauge	Sleeve Size in.	Wall Thick-ness Gauge	Slip Base	Anchor Size without Slip Base in.
1	2	12			No	2 1/4
1	2 1/4	12			No	2 1/2
1	2 1/2	12			(A)	3
1	2 1/2	10			Yes	
1	2 1/4	12	2	12	Yes	
1	2 1/2	12	2 1/4	12	Yes	
2	2	12			No	2 1/4
2	2 1/4	12			No	2 1/2
2	2 1/2	12			Yes	
2	2 1/2	12			Yes	
2	2 1/4	10	2	12	Yes	
2	2 1/2	12	2 1/4	12	Yes	
3 & 4	2 1/2	12			Yes	
3 & 4	2 1/2	10			Yes	
3 & 4	2 1/2	12	2 1/4	12	Yes	
3 & 4	2 1/4	12	2	12	Yes	
3 & 4	2 1/2	10	2 3/16	10	Yes	

Properties of Telescoping Perforated Tube						
Tube Size in.	Wall Thickness in.	U.S. Standard Gauge	Weight per Foot lbs.	Moment of Inertia in. <sup>4</sup>	Cross Sec. Area in. <sup>2</sup>	Section Modulus in. <sup>3</sup>
1 1/2 x 1 1/2	0.105	12	1.702	0.129	0.380	0.172
2 x 2	0.105	12	2.416	0.372	0.590	0.372
2 1/4 x 2 1/4	0.105	12	2.773	0.561	0.695	0.499
2 3/8 x 2 3/8	0.135	10	3.432	0.605	0.841	0.590
2 1/2 x 2 1/2	0.105	12	3.141	0.804	0.803	0.643
2 1/2 x 2 1/2	0.135	10	4.006	0.979	1.010	0.785

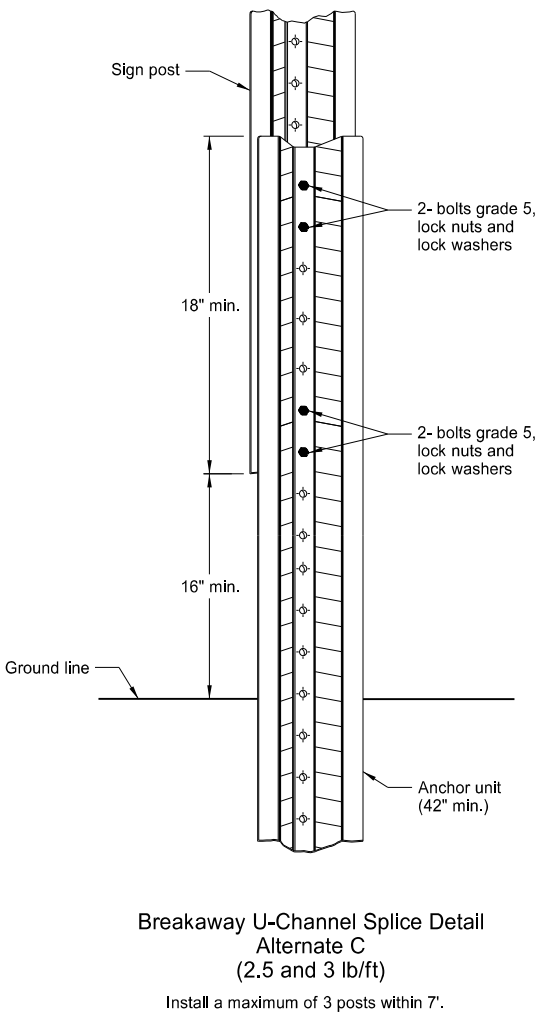
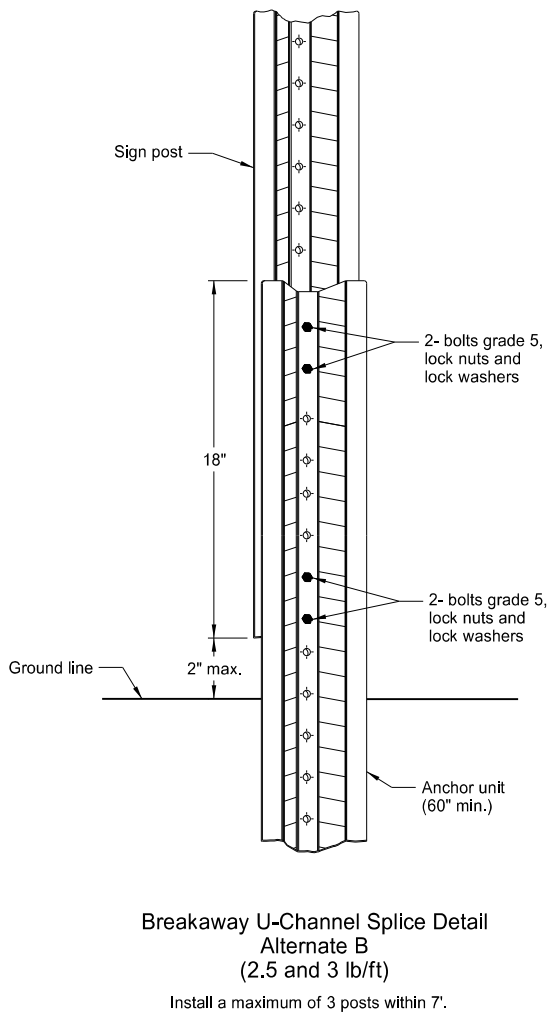
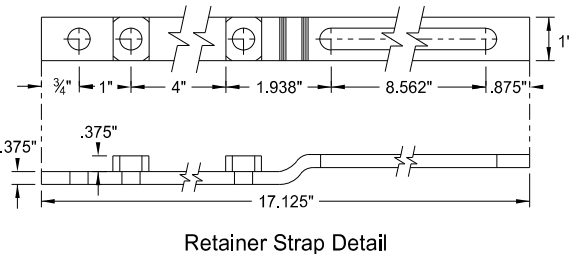
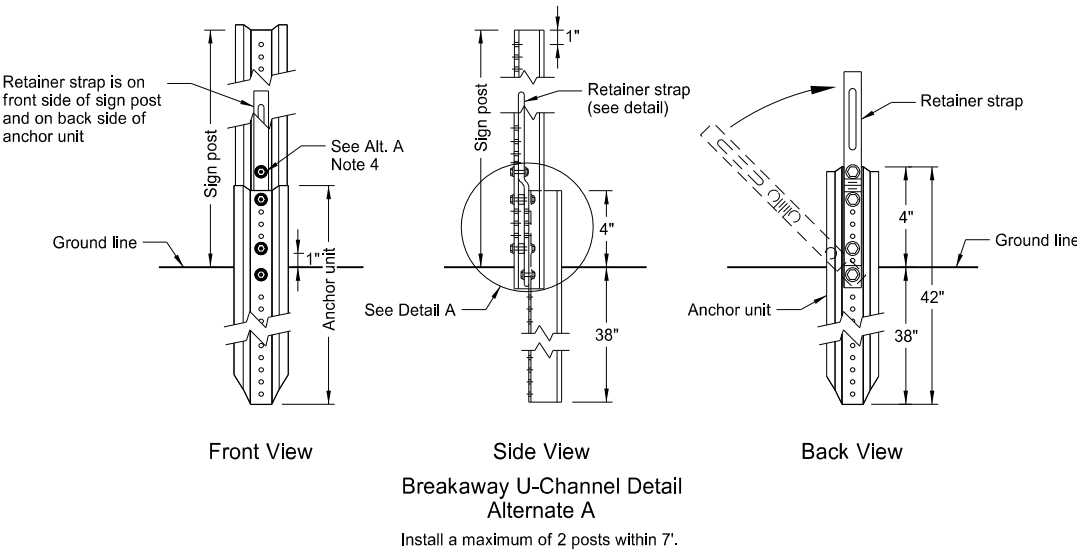
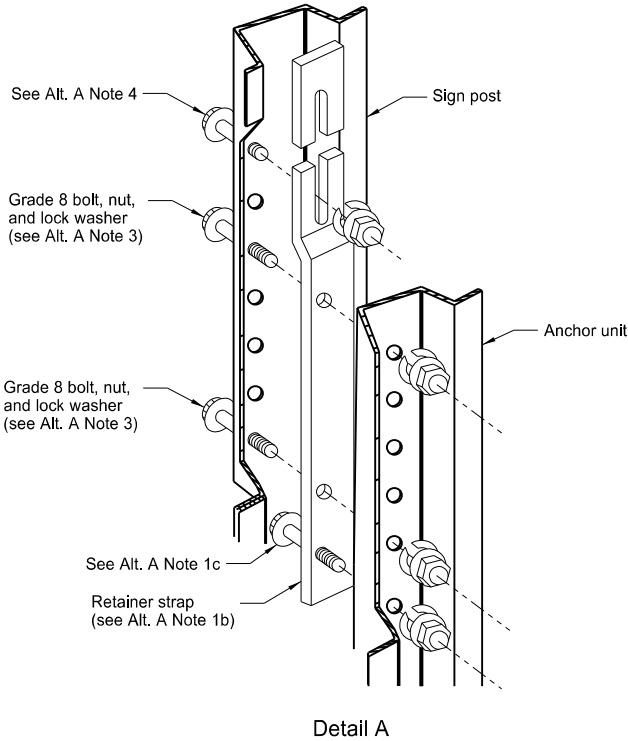
Top Post Receiver Data Table						
Square Post Sizes (B)	A	B	C	D	E	F
2 3/16"x10 ga.	1 5/16"	2 1/2"	3 1/2"	2 5/32"	1 33/64"	1 7/8"
2 1/2"x10 ga.	1 3/32"	2 1/2"	3 5/16"	5/8"	1 21/32"	1 3/4"

- (A) Use breakaway base when support is placed in weak soils. Engineer determines if soils are weak.
- (B) For additional wind load, insert the 2 3/8"x10 ga. into 2 1/2"x10 ga.



NORTH DAKOTA DEPARTMENT OF TRANSPORTATION		This document was originally issued and sealed by  Kirk J Hoff,  Registration Number PE- 4683,  on 10/03/19 and the original document is stored at the North Dakota Department of Transportation
2-28-14		
REVISIONS		
DATE	CHANGE	
9-27-17 10-03-19	Updated to active voice New Design Engr PE Stamp	

U-Channel Post



Alternate A Steps of Installation:

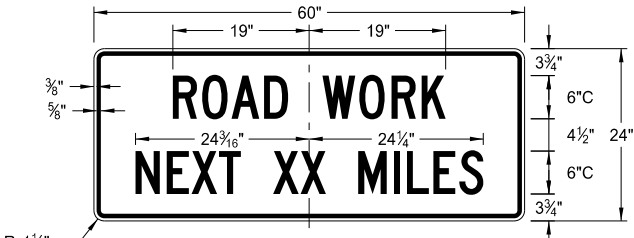
- a) Drive anchor unit to within 12" of ground level.  
b) Establish proper assembly by lining up bottom hole of retainer strap with 6th hole from the top of the anchor unit.  
c) Assemble strap to back of anchor unit using 5/16"x2" bolt, lock washer and nut.  
d) Rotate strap 90° to left.
- a) Drive anchor unit to 4" above ground.  
b) Rotate strap to vertical position.
- a) Place 5/16"x2" bolt, lock washer and nut in bottom of sign post to facilitate alignment of sign post with proper hole in anchor unit.  
b) Alternately tighten two connector bolts.
- Complete assembly by tightening 5/16"x2" bolt (this fastens sign post to retainer strap).
- Properly nest base post, strap, and sign post. Proper nesting occurs when all flat surfaces of the base post, strap, and sign post at the bolts have full contact across the entire width.

NORTH DAKOTA DEPARTMENT OF TRANSPORTATION	
2-28-14	
REVISIONS	
DATE	CHANGE
9-27-17 10-03-19	Updated to active voice New Design Engr PE Stamp

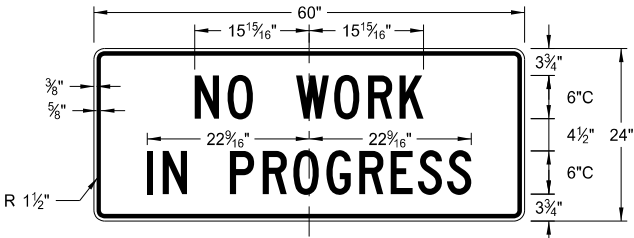
This document was originally issued and sealed by  
Kirk J Hoff,  
Registration Number  
PE- 4683,  
on 10/03/19 and the original document is stored at the North Dakota Department of Transportation

CONSTRUCTION SIGN DETAILS  
TERMINAL AND GUIDE SIGNS

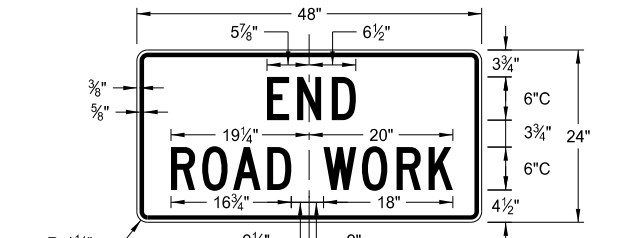
D-704-9



G20-1-60  
Legend: black (non-refl)  
Background: orange



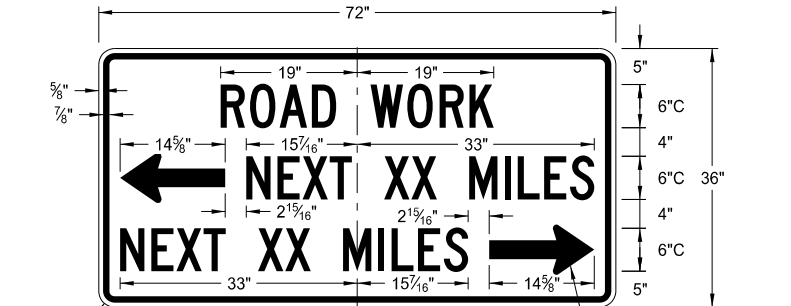
G20-1b-60  
Legend: black (non-refl)  
Background: orange



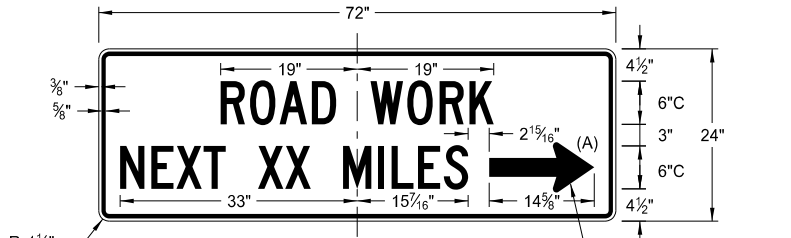
G20-2-48  
Legend: black (non-refl)  
Background: orange



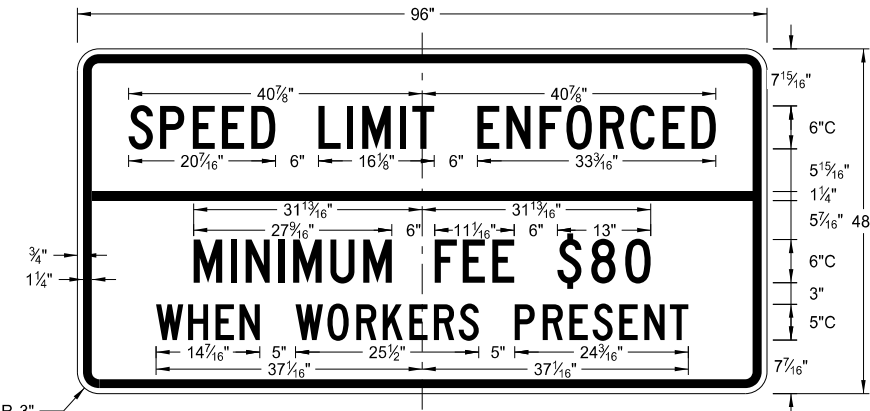
G20-4b-36  
Legend: black (non-refl)  
Background: orange



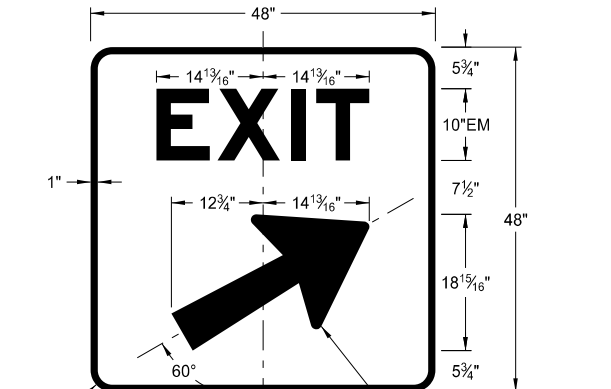
G20-50a-72  
Legend: black (non-refl)  
Background: orange



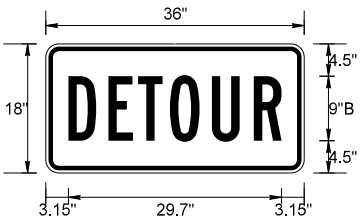
G20-52a-72  
Legend: black (non-refl)  
Background: orange



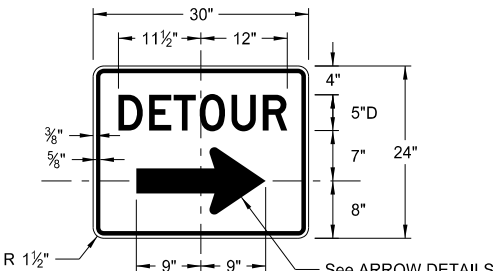
G20-55-96  
Legend: black (non-refl)  
Background: orange



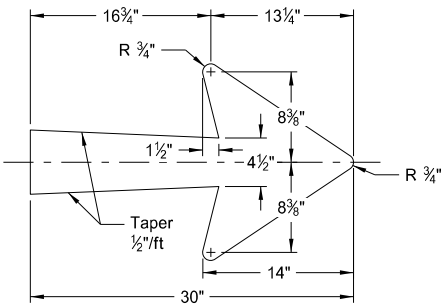
E5-1(L or R)-48  
Legend: white  
Background: green (orange optional)



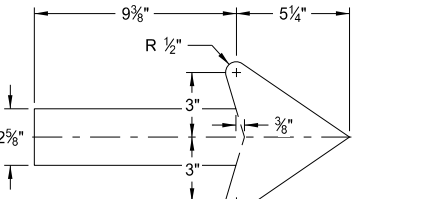
M4-8-36  
Legend: black (non-refl)  
Background: orange



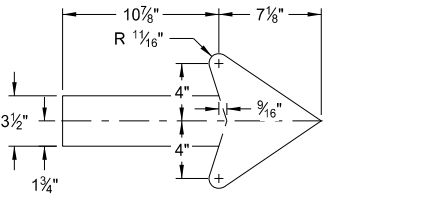
M4-9(L or R)-30 & M4-9-30  
Legend: black (non-refl)  
Background: orange



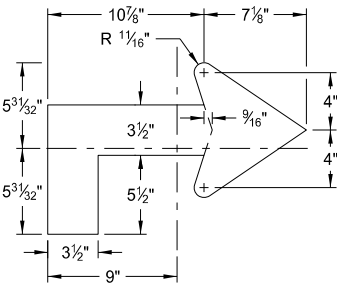
E5-1-48



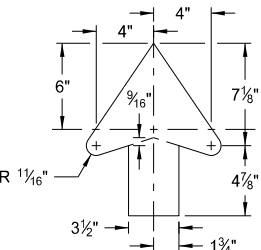
G20-50a-72  
G20-52a-72



M4-9(L or R)-30  
Right or Left



M4-9(L or R)-30  
Advanced Right or Left



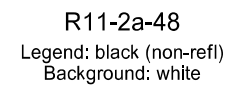
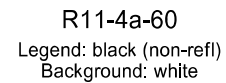
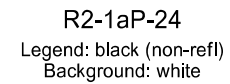
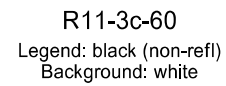
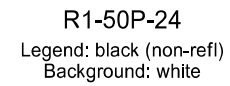
M4-9-30  
Straight

ARROW DETAILS

NOTES:  
(A) Arrow may be right or left of the legend to indicate construction to the right or left.

NORTH DAKOTA DEPARTMENT OF TRANSPORTATION	
8-13-13	
REVISIONS	
DATE	CHANGE
8-17-17 10-03-19	Added sign & background color New Design Engineer PE Stamp

This document was originally issued and sealed by  
Kirk J Hoff,  
Registration Number  
PE- 4683,  
on 10/03/19 and the original document is stored at the  
North Dakota Department  
of Transportation

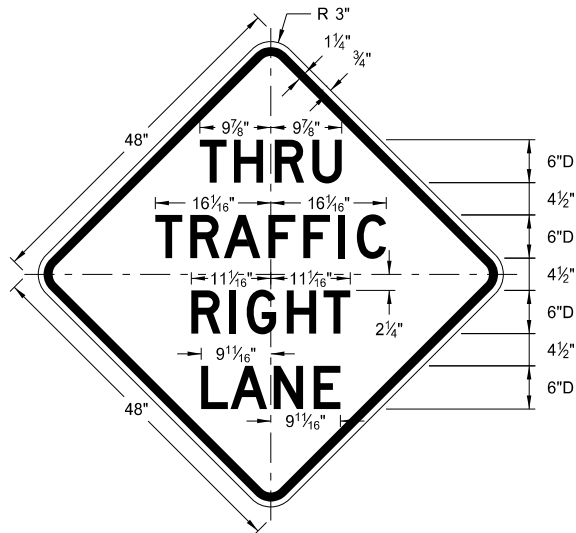


NORTH DAKOTA DEPARTMENT OF TRANSPORTATION	
8-13-13	
REVISIONS	
DATE	CHANGE
8-17-17 10-03-19	Revised sign number New Design Engineer PE Stamp

This document was originally issued and sealed by  
**Kirk J Hoff,**  
 Registration Number  
**PE- 4683 ,**  
 on 10/03/19 and the original document is stored at the  
 North Dakota Department  
 of Transportation

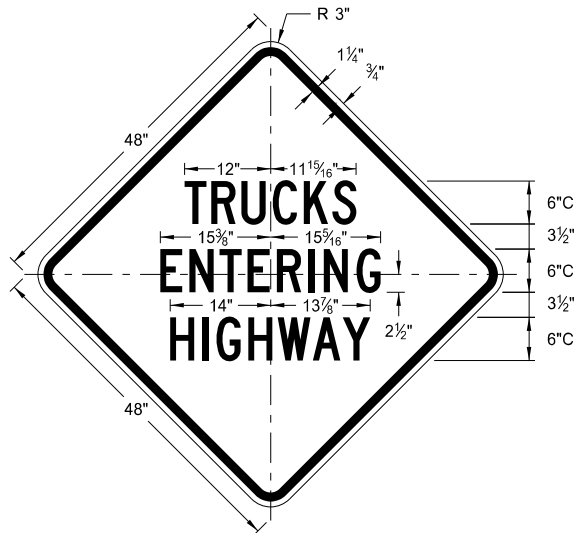
CONSTRUCTION SIGN DETAILS  
WARNING SIGNS

D-704-11



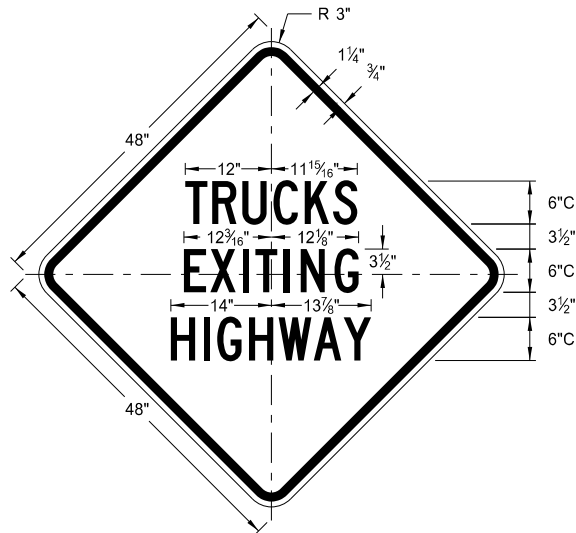
W5-8-48

Legend: black (non-refl)  
Background: orange



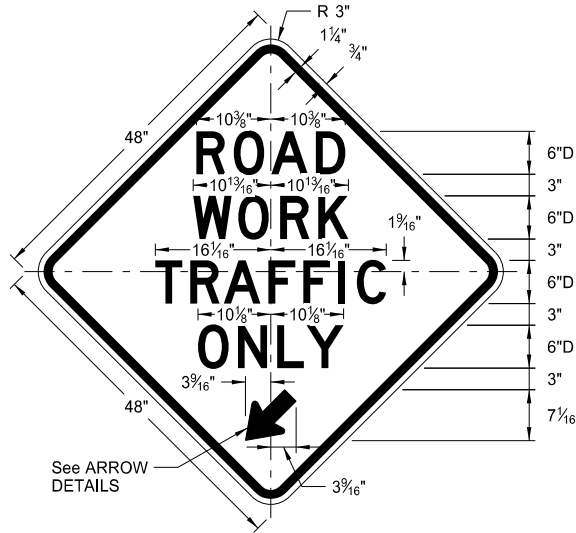
W8-53-48

Legend: black (non-refl)  
Background: orange



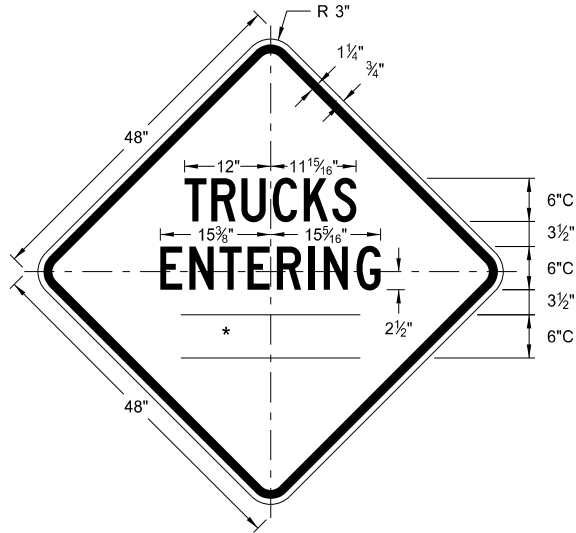
W8-56-48

Legend: black (non-refl)  
Background: orange



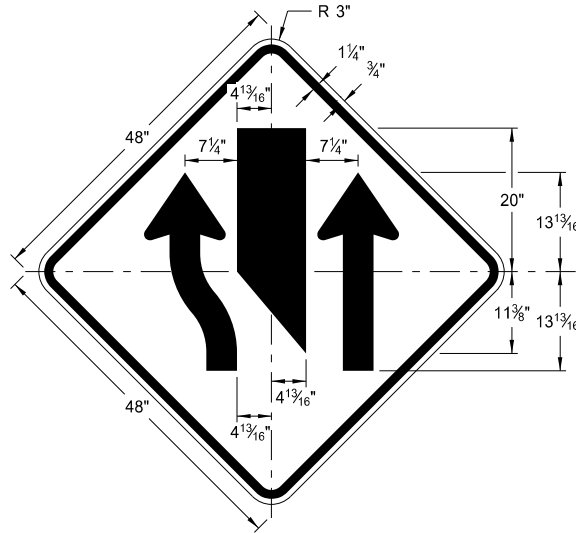
W5-9-48

Legend: black (non-refl)  
Background: orange



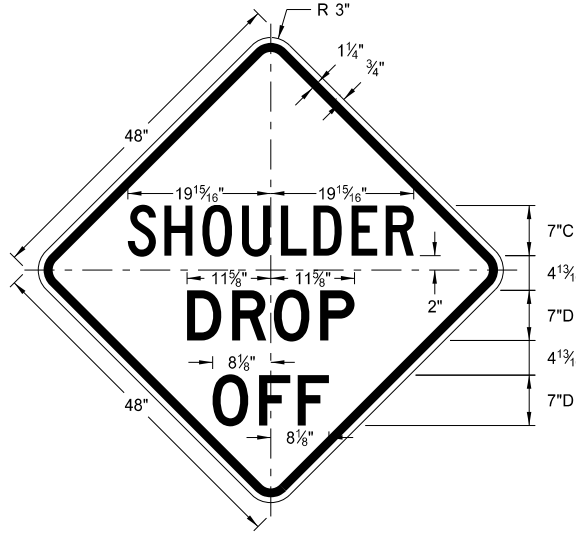
W8-54-48

Legend: black (non-refl)  
Background: orange



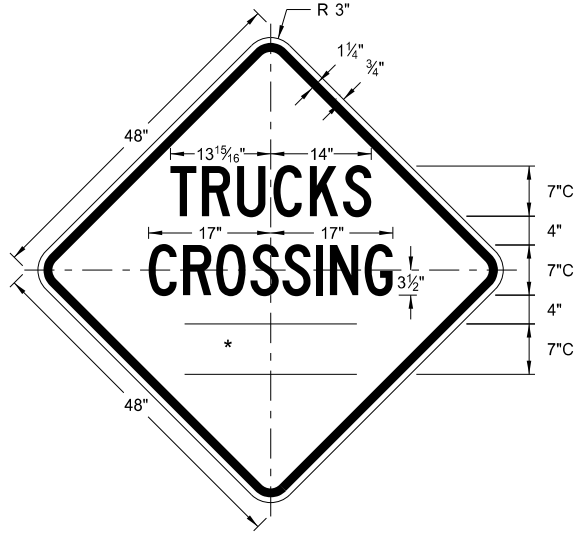
W9-3a-48

Legend: black (non-refl)  
Background: orange



W8-9a-48

Legend: black (non-refl)  
Background: orange

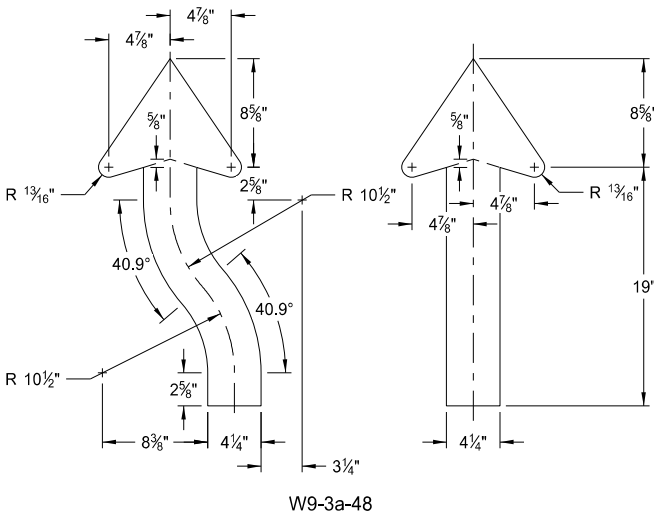
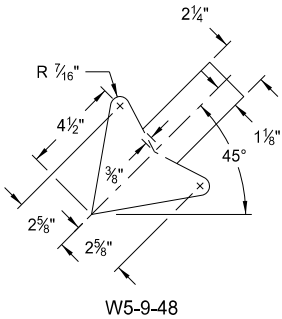


W8-55-48

Legend: black (non-refl)  
Background: orange

WORD	LETTER SPACING
AHEAD	Standard
200 FT	Standard
350 FT	Standard
500 FT	Standard
1000 FT	Reduce 40%
1500 FT	Reduce 40%
½ MILE	Reduce 50%
1 MILE	Standard

\* DISTANCE MESSAGES



ARROW DETAILS

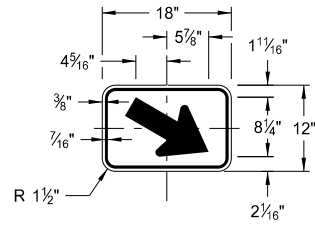
NORTH DAKOTA DEPARTMENT OF TRANSPORTATION	
8-13-13	
REVISIONS	
DATE	CHANGE
8-17-17	Updated sign number
5-31-18	Revised sign and arrow details
10-03-19	New Design Engineer PE Stamp

This document was originally  
issued and sealed by  
Kirk J Hoff,  
Registration Number  
PE- 4683,  
on 10/03/19 and the original  
document is stored at the  
North Dakota Department  
of Transportation

CONSTRUCTION SIGN DETAILS  
WARNING SIGNS

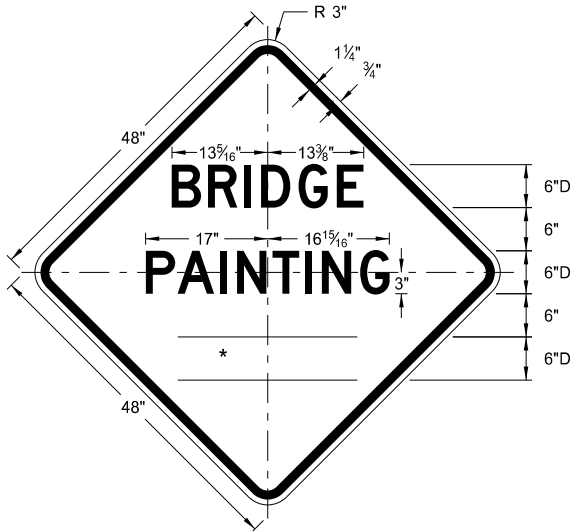
WORD	LETTER SPACING
AHEAD	Standard
200 FT	Standard
350 FT	Standard
500 FT	Standard
1000 FT	Reduce 40%
1500 FT	Reduce 40%
½ MILE	Reduce 50%
1 MILE	Standard

\* DISTANCE MESSAGES



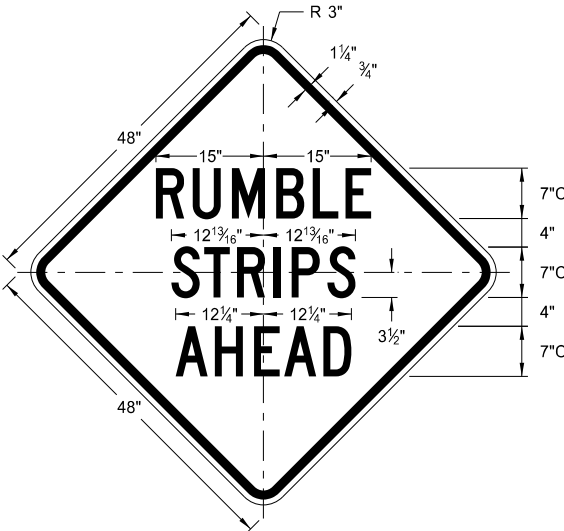
W16-7aP-18

Legend: black (non-refl)  
Background: orange



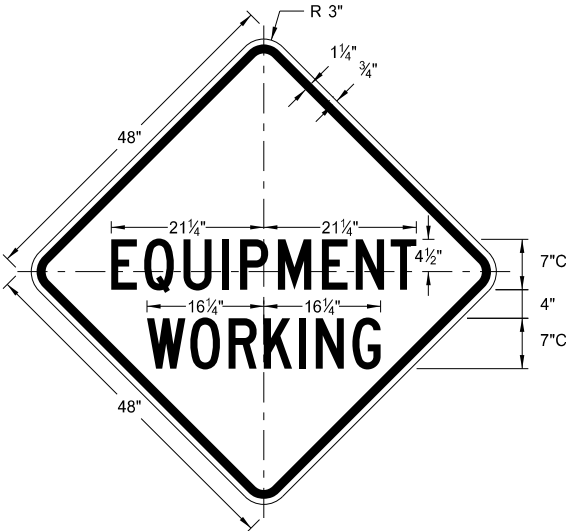
W21-50-48

Legend: black (non-refl)  
Background: orange



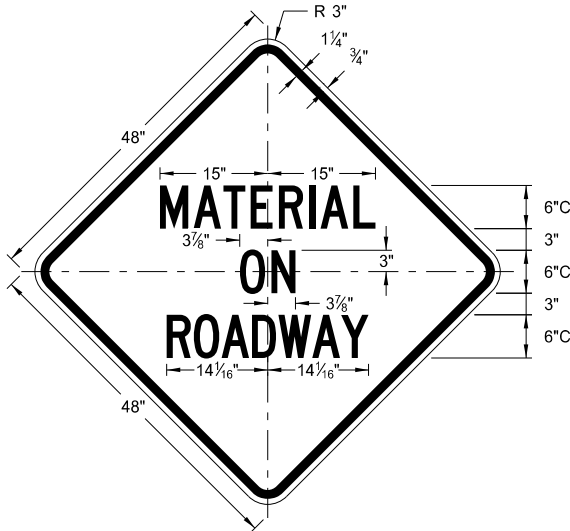
W21-53-48

Legend: black (non-refl)  
Background: orange



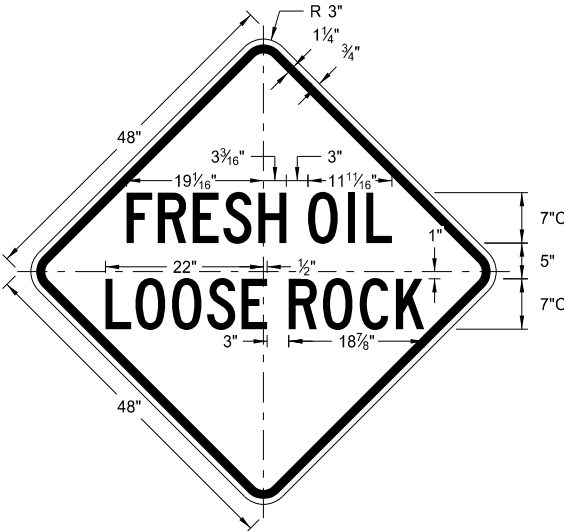
W20-51-48

Legend: black (non-refl)  
Background: orange



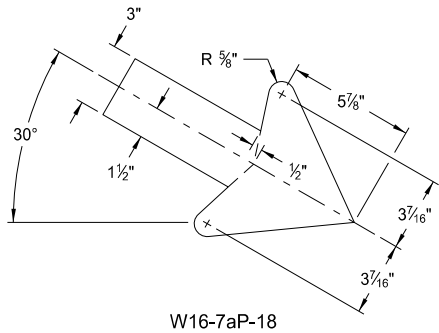
W21-51-48

Legend: black (non-refl)  
Background: orange

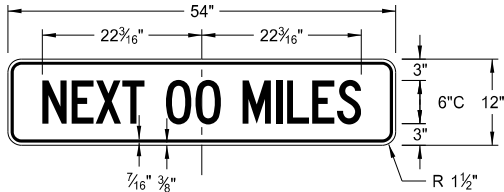


W22-8-48

Legend: black (non-refl)  
Background: orange

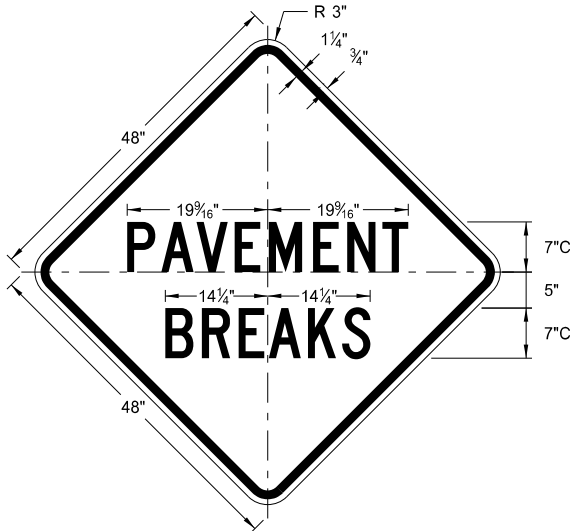


W16-7aP-18



W20-52P-54

Legend: black (non-refl)  
Background: orange

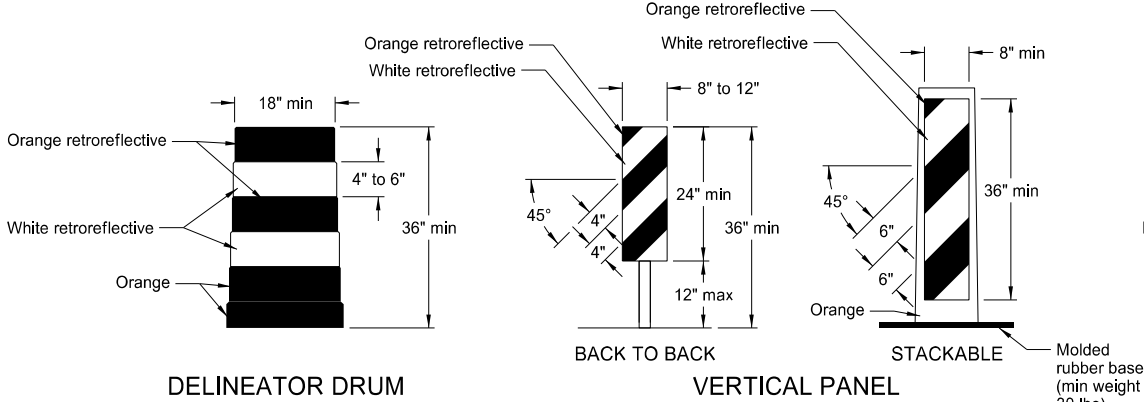


W21-52-48

Legend: black (non-refl)  
Background: orange

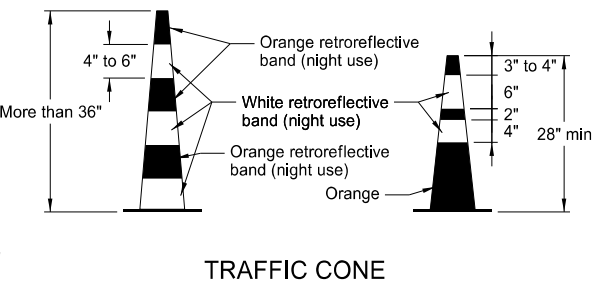
NORTH DAKOTA DEPARTMENT OF TRANSPORTATION		This document was originally issued and sealed by  Kirk J Hoff,  Registration Number PE- 4683,  on 11/1/19 and the original document is stored at the North Dakota Department of Transportation
5-31-18		
REVISIONS		
DATE	CHANGE	
11-01-19	Added details for sign W16-7aP-18.	

BARRICADE AND CHANNELIZING DEVICE DETAILS

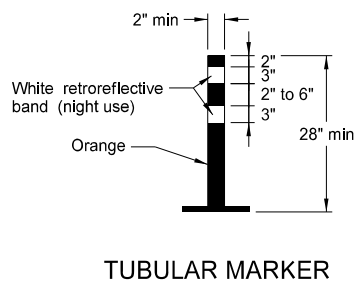


Provide horizontal, circumferential, alternating orange and white retroreflective stripes 4" to 6" wide for drum markings. Use a minimum of two orange and two white stripes with the top stripe being orange for each drum. Do not exceed 3" nonretroreflectORIZED spaces between the horizontal orange and white stripes. Avoid placement of stripes on drum ribs or indentations. Use closed top drums that will not allow collection of debris. Do not place ballast on the top of drum.

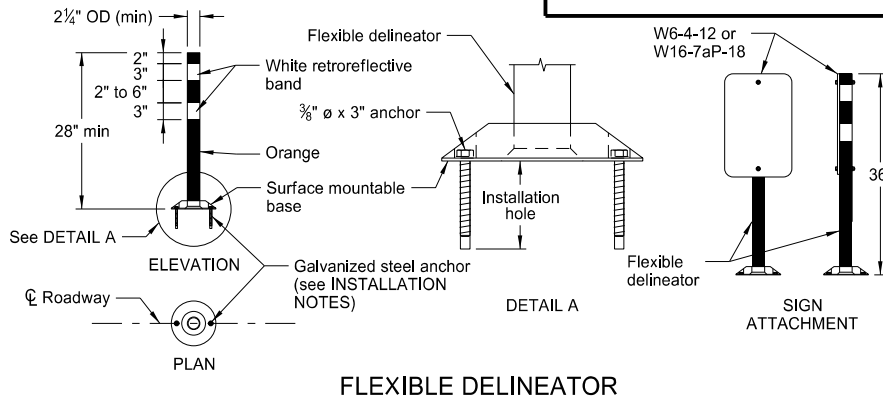
Provide alternating orange and white retroreflective stripes, sloping downward in direction vehicular traffic is to pass. Place retroreflective sheeting on both sides of panel with a minimum of 270 square inches of retroreflective area facing vehicular traffic. Where the height of the retroreflective material on the vertical panel is 36 inches or more, use a stripe width of 6 inches.



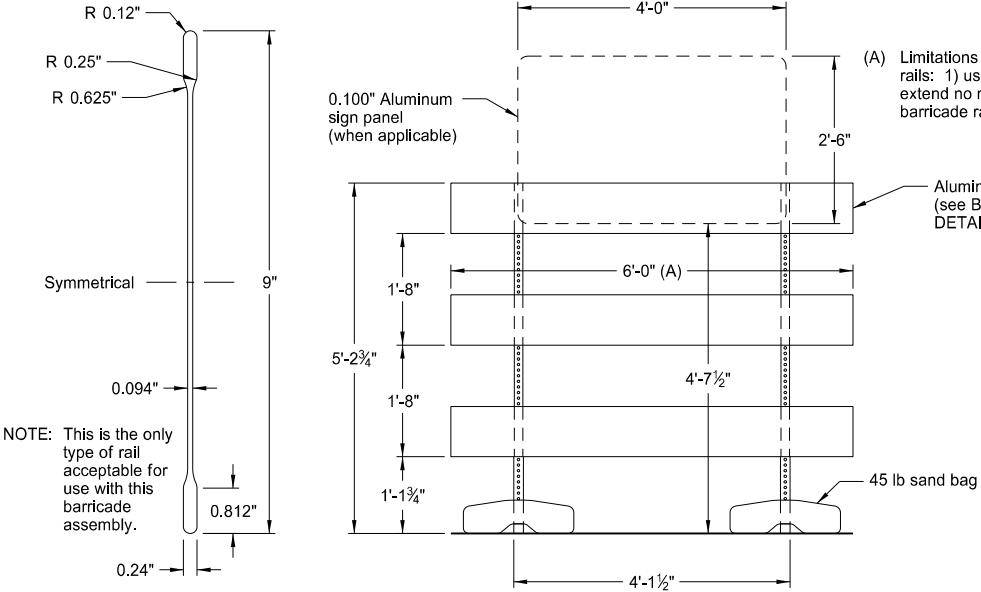
Provide retroreflectORIZATION of cones more than 36" in height by alternating orange and white retroreflective stripes. Use a minimum of two orange and two white stripes for each cone with the top stripe being orange. Use maximum 3" nonretroreflectORIZED space between the orange and white stripes.



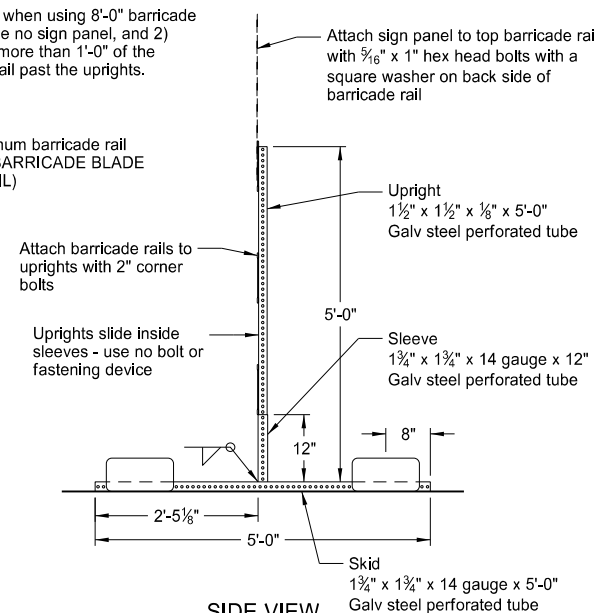
Provide retroreflectORIZATION of tubular markers more than 42" in height by alternating four 4" to 6" wide orange and white stripes with the top stripe being orange.



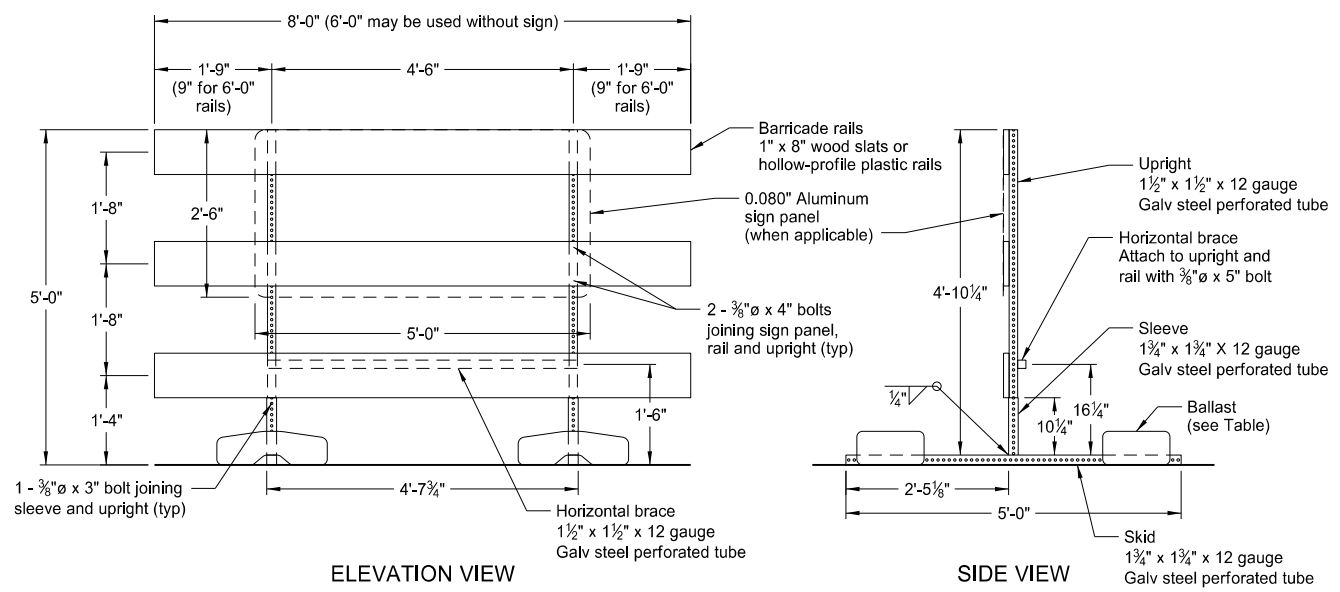
- INSTALLATION NOTES:
1. Drill installation holes to diameter and depth required by manufacturer's specifications.
  2. For removal, remove anchors and fill installation hole with an epoxy designed to bond to pavement surface.
  3. In lieu of bolted down base, use an 8" x 8" butyl pad or hot melt butyl. Remove butyl as close as possible to pavement surface.



BARRICADE BLADE DETAIL

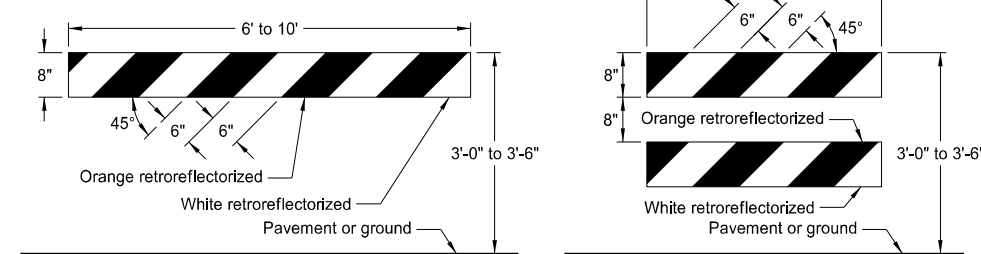


BARRICADE ASSEMBLY DETAIL  
(Aluminum Barricade Rails)



BARRICADE ASSEMBLY DETAIL  
(Wood or Plastic Rails)

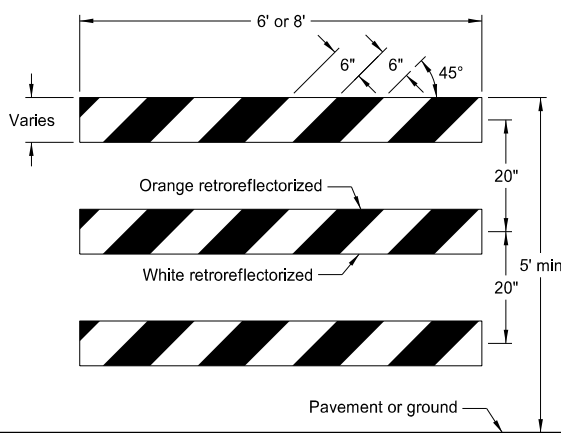
NOTE: For barricade markings use alternating orange and white retroreflective stripes, sloping downward in the direction traffic is to pass. Place retroreflective sheeting on both sides of the rails with a minimum of 270 square inches of visible retroreflective area facing vehicular traffic. When the barricade length is less than 36", use a rail stripe width of 4".



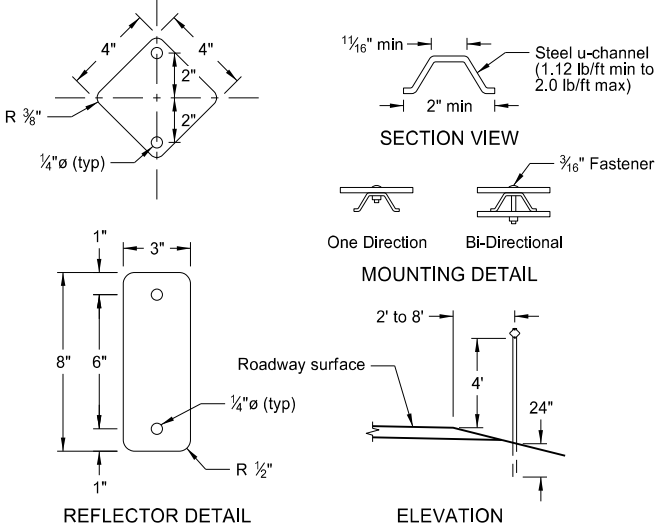
TYPE I BARRICADE

TYPE II BARRICADE

BARRICADE RAIL DETAILS



TYPE III BARRICADE



DELINEATORS

MINIMUM BALLAST  
(For each side of barricade support)

Without Sign	4 - 25 lb sandbags
With Sign	6 - 25 lb sandbags

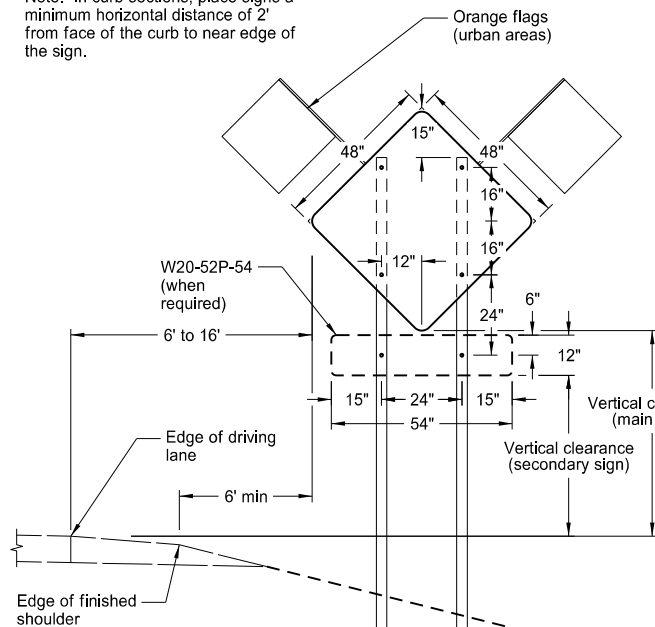
Note: Number of sandbags based on a wind speed of 55 MPH. Sandbags assumed to be placed at or near the ends of the skids.

NORTH DAKOTA DEPARTMENT OF TRANSPORTATION	
10-3-13	
REVISIONS	
DATE	CHANGE
9-27-17 11-01-19	Updated to active voice Revised details for Flexible Delineator

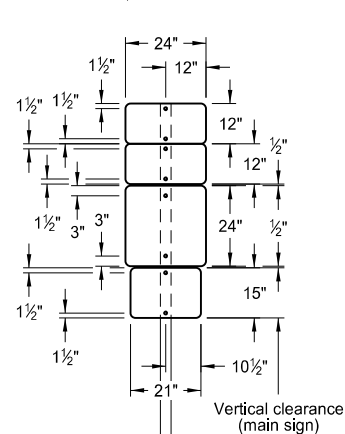
This document was originally issued and sealed by  
Kirk J Hoff,  
Registration Number  
PE- 4683,  
on 11/1/19 and the original document is stored at the  
North Dakota Department  
of Transportation

CONSTRUCTION SIGN PUNCHING AND MOUNTING DETAILS

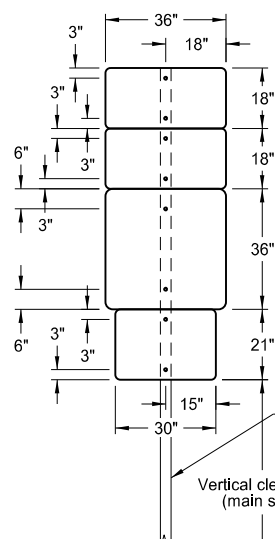
Note: In curb sections, place signs a minimum horizontal distance of 2' from face of the curb to near edge of the sign.



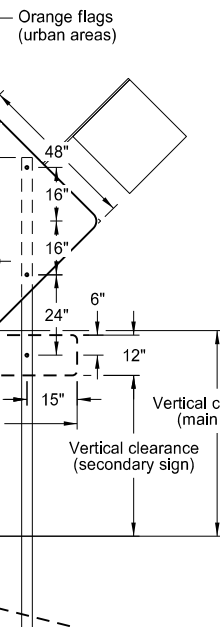
TYPICAL SECTION  
(48" x 48" diamond warning sign shown)



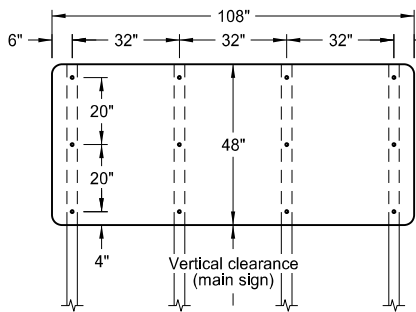
24" x 24"  
ROUTE MARKER  
ASSEMBLY



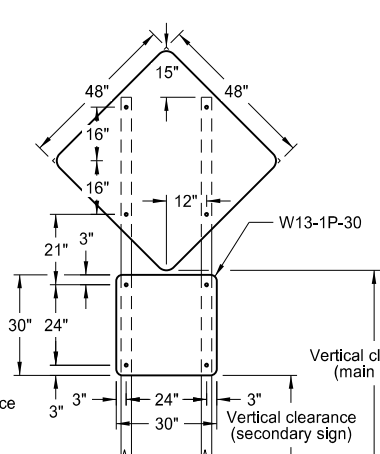
36" x 36"  
ROUTE MARKER  
ASSEMBLY



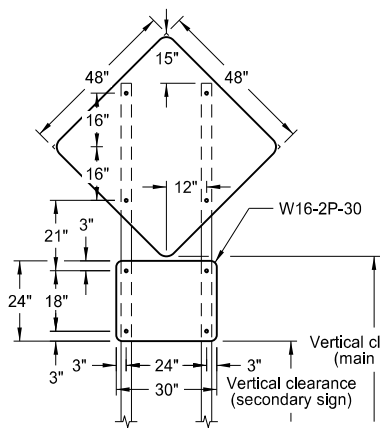
18" x 18"  
DIAMOND SIGN



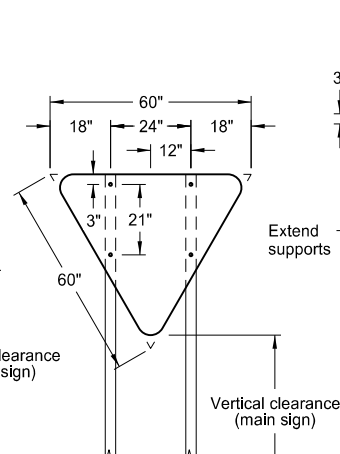
108" x 48" SIGN



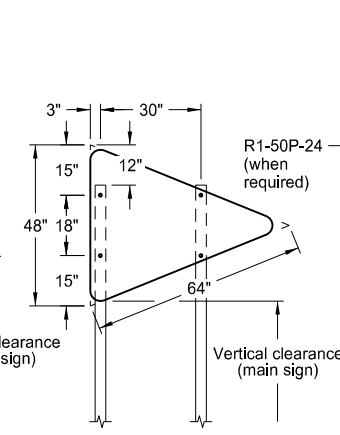
48" x 48" DIAMOND SIGN  
(with 30" x 30" secondary sign)



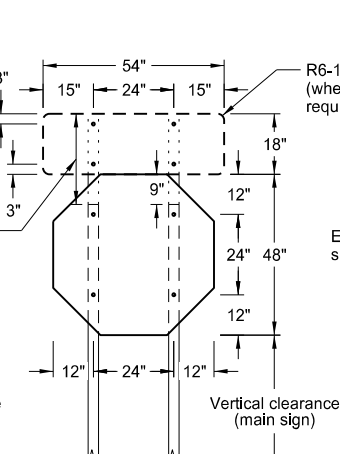
48" x 48" DIAMOND SIGN  
(with 30" x 24" secondary sign)



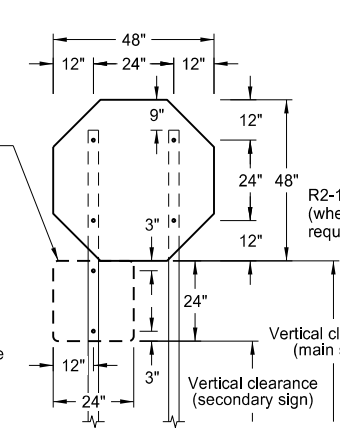
R1-2-60 - YIELD SIGN



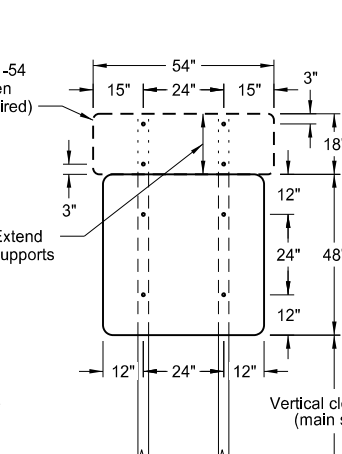
W14-3-64 - PENNANT SIGN



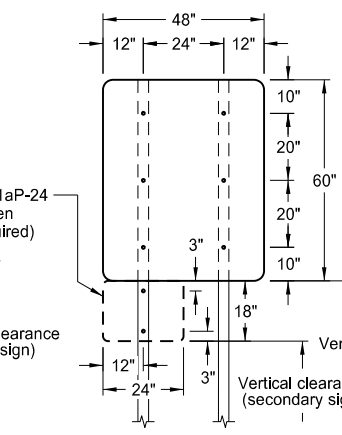
R1-1-48 - STOP SIGN  
(with R6-1-54 sign as required)



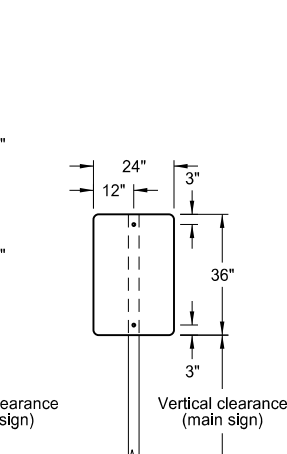
R1-1-48 - STOP SIGN  
(with R1-50P-24 sign as required)



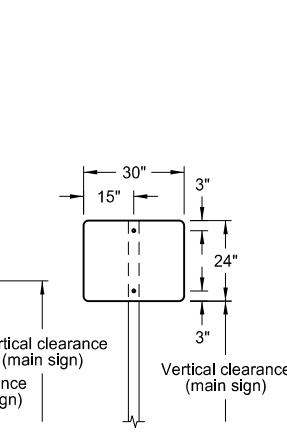
48" x 48" SIGN  
(with R6-1-54 sign as required)



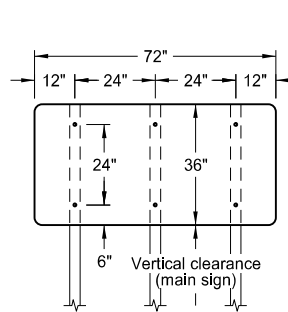
48" x 48" SIGN  
(with R2-1aP-24 sign as required)



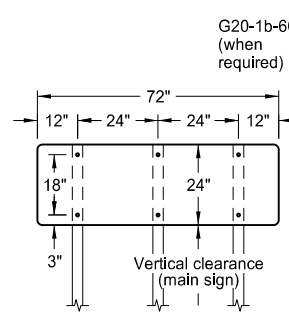
24" x 36" SIGN



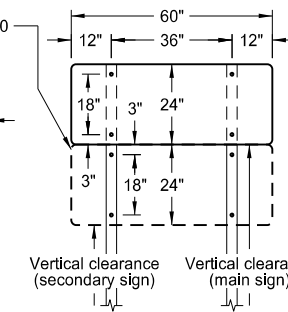
30" x 24" SIGN



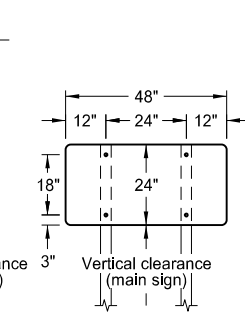
72" x 36" SIGN



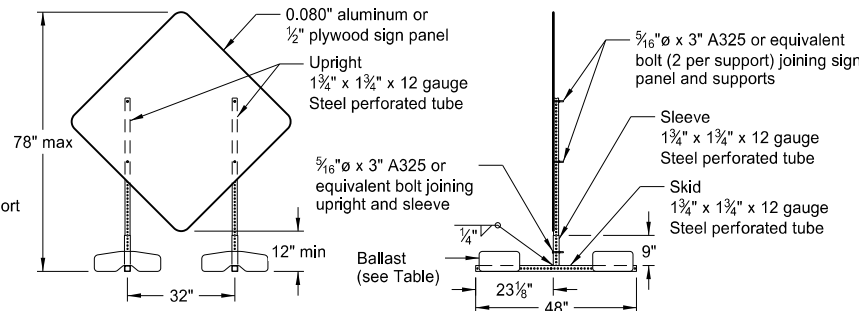
72" x 24" SIGN



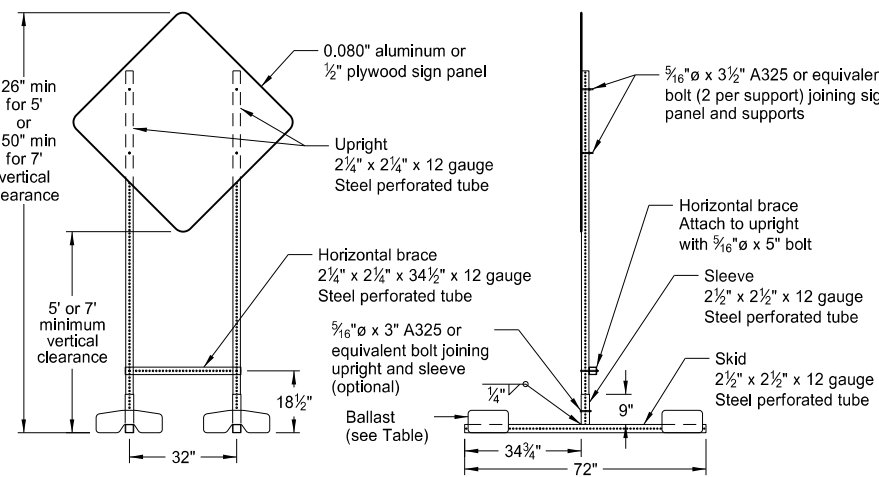
60" x 24" SIGN



48" x 24" SIGN



PORTABLE SIGN SUPPORT  
LOW-MOUNTING HEIGHT



PORTABLE SIGN SUPPORT  
HIGH-MOUNTING HEIGHT

NOTES:

1. Sign Supports: Galvanize or paint supports. Minimum post sizes are 2.5 lb/ft u-channel or 2" x 2" x 12 gauge steel perforated tube, except where noted. When installing signs on u-channel, minimum post size for assemblies containing a secondary sign is 3.0 lb/ft. Post sizes based on a wind speed of 55 MPH.  
  
Place signs over 50 square feet on 2½" x 2½" perforated tube supports as a minimum.  
  
Do not attach guy wires to sign supports. Attach wind beams behind sign panels when used with u-posts.
2. Sign Panels: Provide sign panels made of 0.100" aluminum, ½" plywood, or other approved material, except where noted. Punch all holes round for ⅝" bolts.
3. Alternate Messages: Install and remove alternate message signs on reflectorized plate (without borders) as required. (i.e. "Left" and "Right" message on lane closure sign)
4. Route Marker Auxiliary Signs: Provide route marker auxiliary signs, such as the cardinal direction and directional arrows, with a background and legend that match the route marker they are used with:

Interstate - white legend on blue background  
Interstate Business Loop - white legend on green background  
US and State - black legend on white background  
County - yellow legend on blue background

5. Vertical Clearance: Install signs with a vertical clearance of 5'-0" (see TYPICAL SECTION.). In areas where parking or pedestrian movements are likely or the view of the sign may be obstructed, install signs with a vertical clearance of 7'-0" from the top of the curb or from the near edge of the driving lane in absence of a curb.

The vertical clearance to secondary signs is 1'-0" less than the vertical clearance stated above.

Provide a minimum clearance of 7'-0" from the ground at the post for signs with an area exceeding 50 square feet.

6. Portable Signs: Provide portable signs that meet the vertical clearance stated above when it is necessary to place signs within the pavement surface.

Use of low-mounting height (minimum 12" vertical clearance) portable signs for 5 days or less, is allowed as long as the view of the sign is not obstructed. Time delays caused by unforeseen circumstances, such as equipment breakdown, rain, subgrade failures, etc., will not accrue towards the 5 day period. Use of R9-8 through R9-11a series, W1-6 through W1-8 series, M4-10, and E5-1 is allowed for longer than 5 days.

Restrict signs mounted on portable sign supports shown in the LOW-MOUNTING HEIGHT and HIGH-MOUNTING HEIGHT details to a maximum surface area of 16 square feet.

MINIMUM BALLAST  
(For each side of sign support base)

Sign Panel Mounting Height (ft)	Number of 25 lb sandbags for 4' x 4' sign panel
1'	6
5'	8
7'	10

Note: The number of sandbags are based on a wind speed of 55 MPH. Place sandbags at or near the ends of skids.

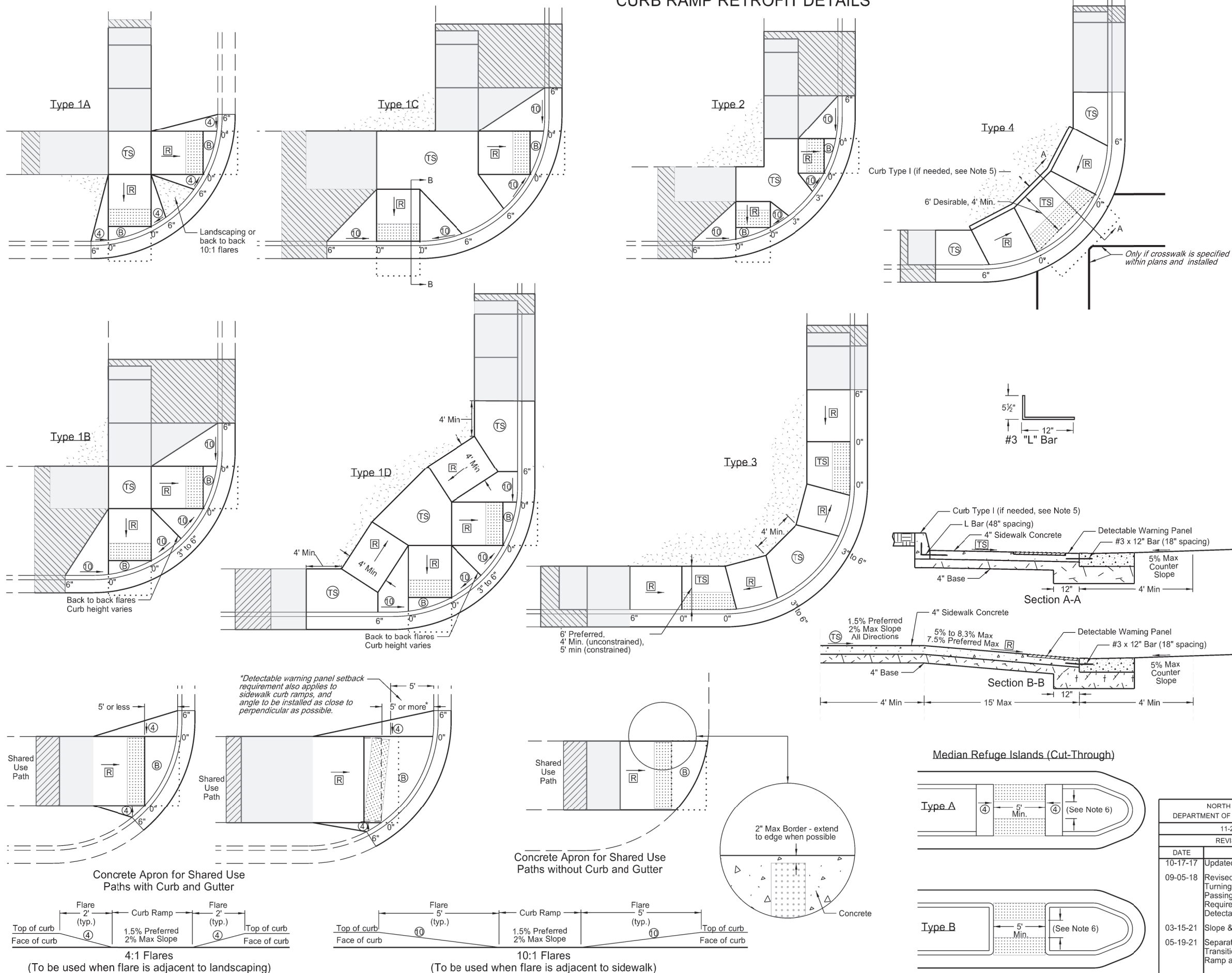
NORTH DAKOTA DEPARTMENT OF TRANSPORTATION	
10-4-13	
REVISIONS	
DATE	CHANGE
11-14-13	Revised Note 6
9-27-17	Updated to active voice
11-01-19	Revised 60"x24" sign detail

This document was originally issued and sealed by  
  
Kirk J Hoff,  
Registration Number  
PE-4683,  
on 11/1/19 and the original document is stored at the North Dakota Department of Transportation



CURB RAMP RETROFIT DETAILS

D-750-3



- NOTES:
1. Ramp width is the useable portion of the ramp, excluding flares. Match curb ramp width to Existing Pedestrian Facility (EPF) width (4' minimum or 5' for island ramps.) Match ramp width to existing shared use path width. Maximum ramp length is 15'.
  2. Provide turning space with desirable 5' x 5' size or larger and minimum 4' x 4' unconstrained size, for any change of direction. Provide landing 5' long x width of path at the bottom and top of parallel ramps and at the top of perpendicular ramps. Turning spaces and Landings may overlap.
  3. Match detectable warning panel width to ramp width. Radial panels are allowed. Place detectable warning panel within the lower turning space.
  4. Provide a continuous 4' minimum width EPF with 1.5% preferred cross slope and max 2% constructed cross slope.
  5. Modify existing ground slope with landscaping, as needed. If not possible, use a vertical curb as detailed on Standard D-750-2. The Engineer will measure curb at the unit price bid for "Curb - Type 1" per lineal foot.
  6. Islands: If the profile of the island curb ramp is 2% or less, provide a minimum distance of 2' between warning panels. If the profile of the island curb ramp is steeper than 2%, provide a turning space between the ramps.
  7. Provide generally planar vertical alignments. Provide grade breaks, perpendicular to the direction of the pedestrian travel, at the top and bottom of curb ramps (1.5% preferred, 2% max constructed cross slope).
  8. See Curb Ramp Retrofit Transition Details Standard D-750-4 for additional information. Also See PROWAG for full compliance in the curb ramp area.
  9. Grade transitions shall be flush.

LEGEND:

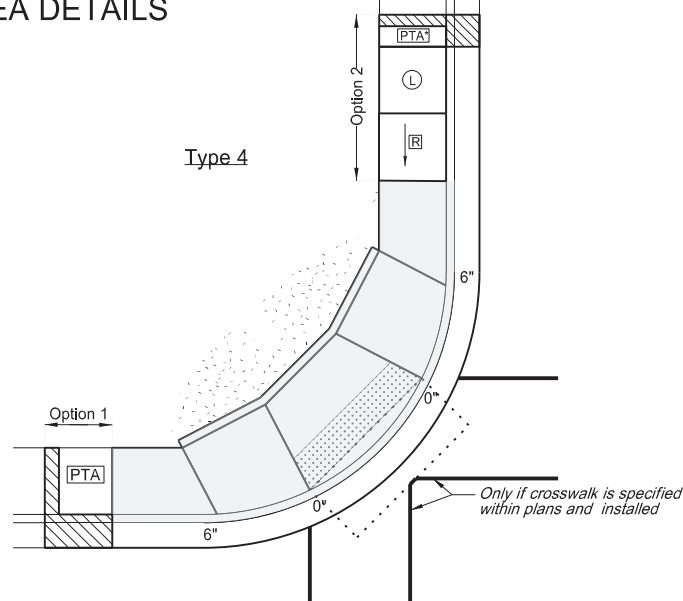
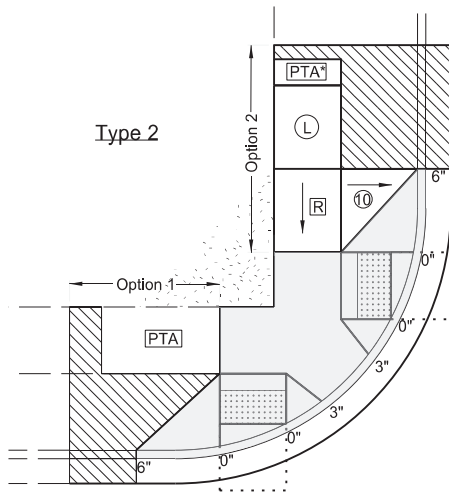
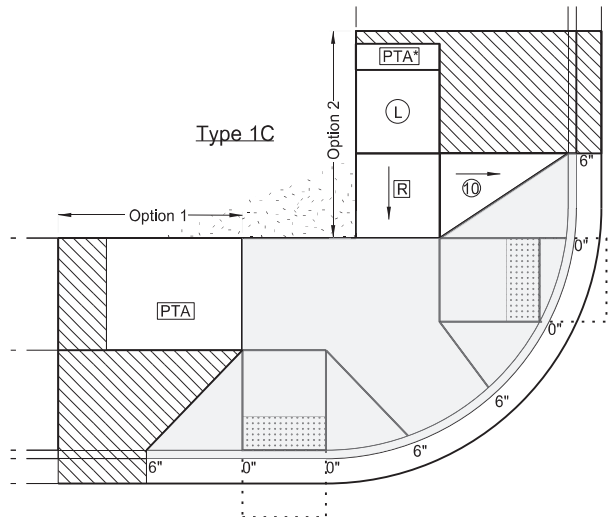
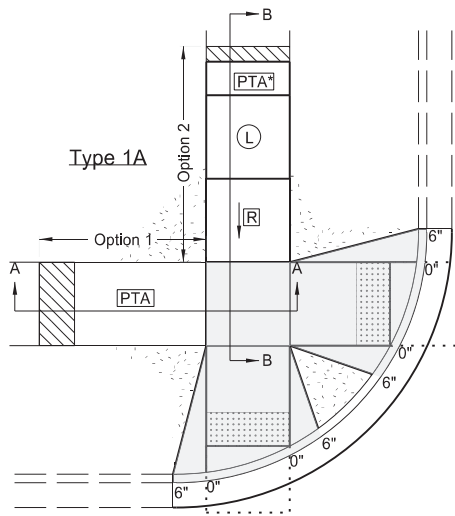
- Detectable Warning Panel.
- Landscaping.
- Transitional tie-in to nearest joint, if needed.
- Curb Ramp Retrofit Transitional Area (See Standard Drawing D750-4)
- 4' long x width of EPF or 4' minimum Clear space outside traffic lanes of travel. 1.5% preferred cross slope 2% maximum cross slope 4.7% preferred running and counter slope 5% maximum running and counter slope
- (TS) : Turning Space Use at top of ramp or when changing directions. 1.5% preferred slope (2% maximum) all directions.
- (R) : Preferred Ramp Grade = 5% to 7.5%. Maximum Constructed Grade = 8.3%. Preferred Cross Slope = 1.5%. Maximum Constructed Cross Slope = 2%.
- (B) : 1.5% preferred cross slope 2% maximum constructed cross slope running slope consistent with the EPF 4.7% preferred max counter slope 5.0% max constructed counter slope
- (10) : 10:1 maximum constructed slope.
- (4) : 4:1 maximum constructed slope.
- 0", 3", or 6" : Curb Height.

NORTH DAKOTA DEPARTMENT OF TRANSPORTATION	
11-26-13	
REVISIONS	
DATE	CHANGE
10-17-17	Updated to active voice.
09-05-18	Revised Notes, Revision for Turning Space, Added Passing Space Requirements, Turned Detectable Warning Panel
03-15-21	Slope & other clarifications.
05-19-21	Separate Curb Ramp Transition Area from Curb Ramp area

KIRK J. HOFF  
REGISTERED  
PROFESSIONAL  
PE-4683  
ENGINEER  
NORTH DAKOTA  
05 19 2021

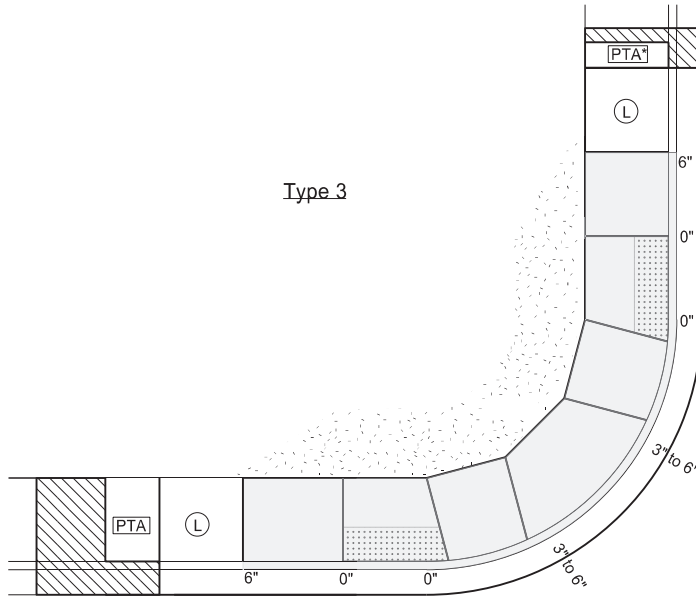
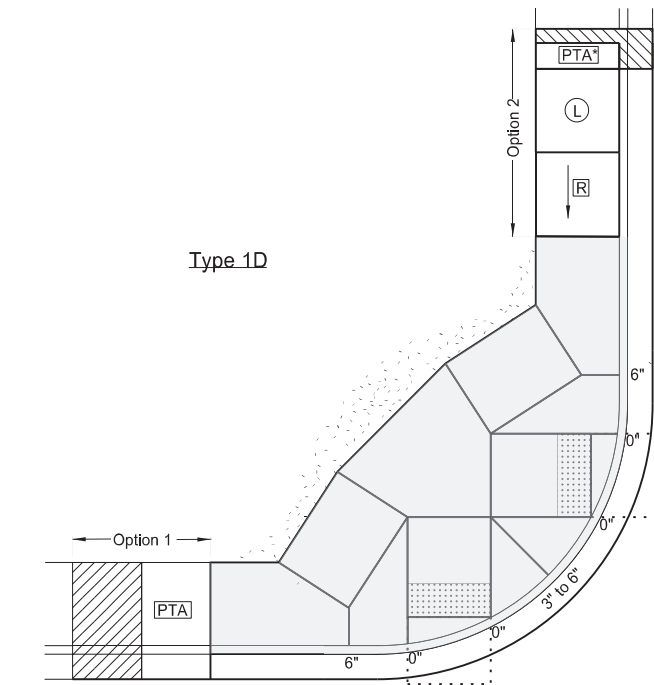
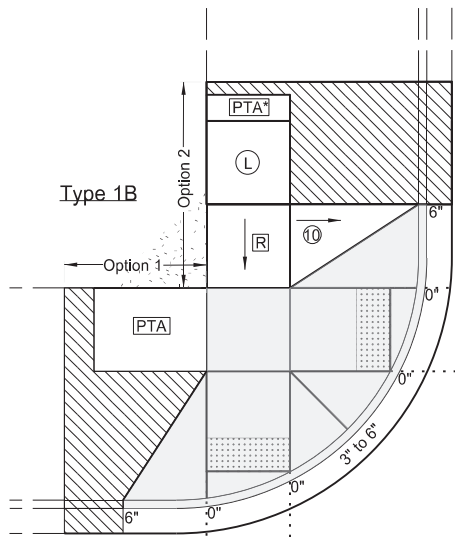
CURB RAMP RETROFIT TRANSITIONAL AREA DETAILS

D-750-4



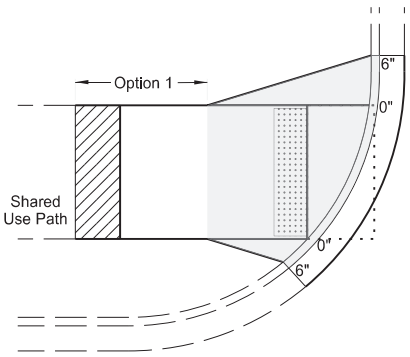
NOTES:

1. Curb Ramp Transitional Areas are to transition from the Curb Ramp area into the Existing Pedestrian Facility (EPF). Each layout shows example transitions. Use any combination for transitions from the Ramp Area into the EPF that allows for similar or gentler slopes to that of the existing condition, yet transitions in the shortest distance possible. In some cases, if grades allow, the Ramp area can immediately transition into the EPF and no transitional area is needed.
  2. Option 1: Use this transition when existing running slope grades are less than 5%. Transition from the ramp area to the EPF using the Pedestrian Access Transition Area (PTA) transition rates and in less than 20 feet.
  3. Option 2: Use this transition when existing running slopes are greater than 5% and option 1 is not able to be met.
- Add a ramp and a landing immediately after the ramp area. Then transition from the compliant landing into the EPF using the PTA rates (preferred), or in less than 15 feet (which ever is shorter).
4. Transitional Areas for Shared Use Paths can be concrete or asphalt.
  5. See Curb Ramp Retrofit Details Standard D-750-3 for additional information.

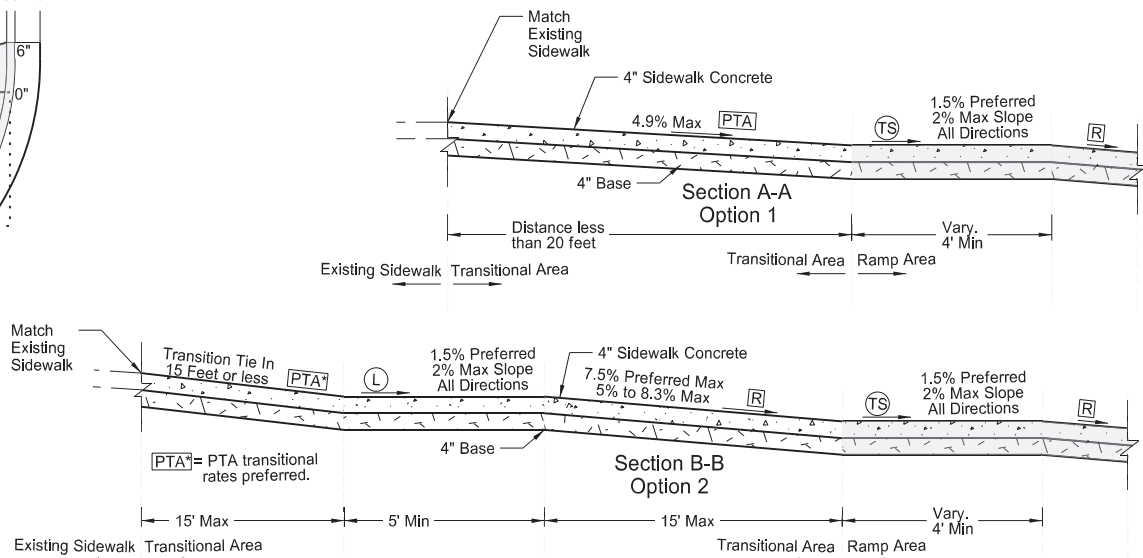
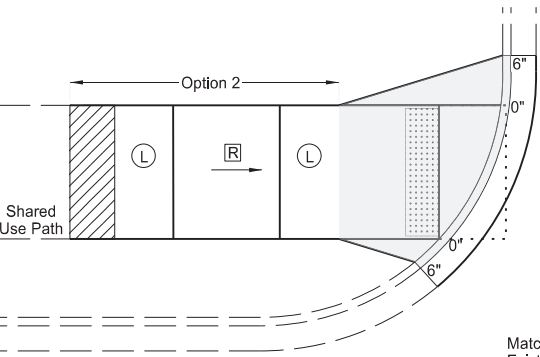


LEGEND:

- : Detectable Warning Panel.
- : Landscaping.
- : Transitional tie-in to nearest joint, if needed.
- : Curb Ramp Retrofit Area (See Standard Drawing D750-3)
- : 4' long x width of EPF or 4' minimum Clear space outside traffic lanes of travel. 1.5% preferred cross slope 2% maximum cross slope 4.7% preferred running slope 5% maximum running slope
- : Pedestrian Access Transition Area Running Slope less than 4.9%. Transition Cross Section at 1/2 percent per foot from the from Ramp Area to EPF.
- : Turning Space/Landing Use at top of ramp or when changing directions. 1.5% preferred slope (2% maximum) all directions.
- : Preferred Ramp Grade = 5% to 7.5%. Maximum Constructed Grade = 8.3%. Preferred Cross Slope = 1.5%. Maximum Constructed Cross Slope = 2% Maximum Length = 15 feet
- : 10:1 maximum constructed slope.
- : 4:1 maximum constructed slope.
- 0", 3", or 6" : Curb Height.



Transition Areas for Shared Use Paths



NORTH DAKOTA DEPARTMENT OF TRANSPORTATION	
05-19-21	
REVISIONS	
DATE	CHANGE

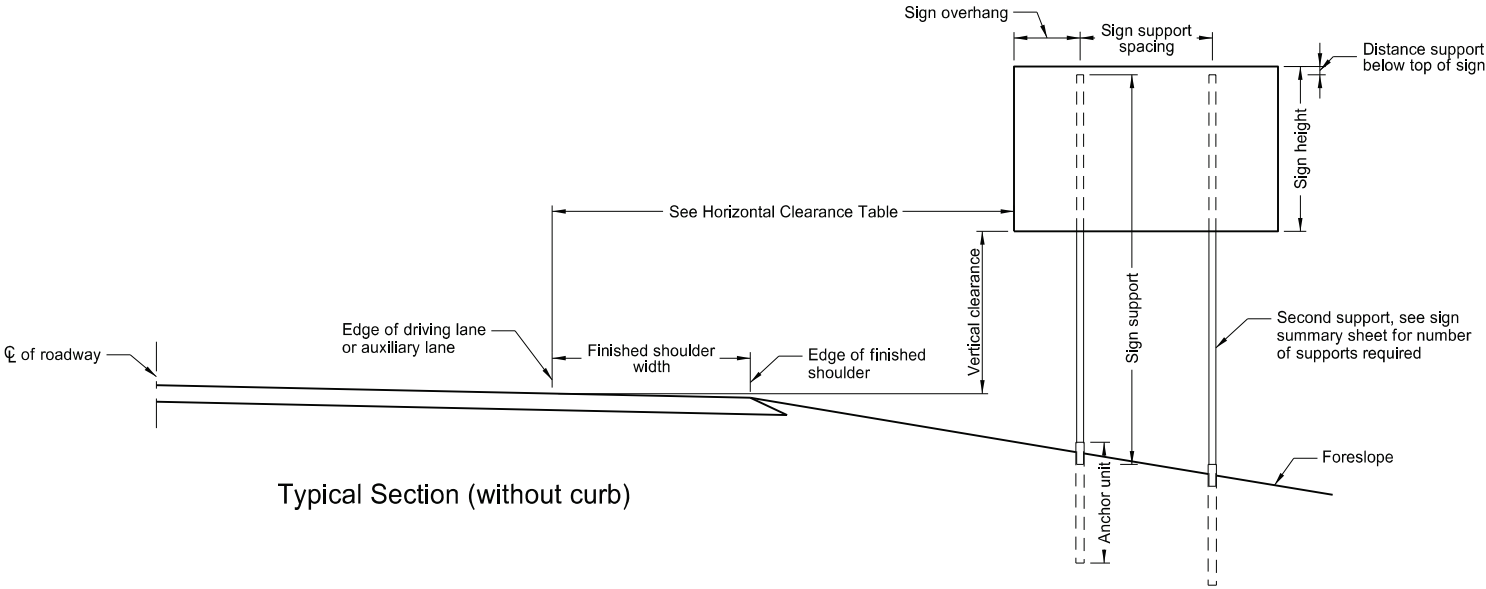


PERFORATED TUBE ASSEMBLY DETAILS

D-754-23

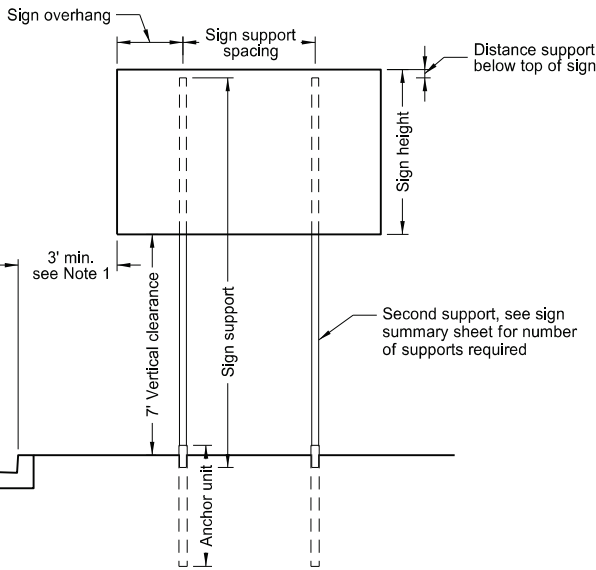
Notes:

1. Curbed Roadways: Use a 3' clearance from face of the curb except where right of way or sidewalk width is limited; Use a minimum 2' clearance. Increase the horizontal clearance if required to maintain a minimum sidewalk clear width of 4' from the sign support, not including any attached curb.
2. Minimum vertical clearance: Provide at least 5' measured from the bottom of the sign to the edge of the driving lane or auxiliary lane at the side of the road in rural districts. Provide at least 7' clearance to the bottom of the sign, where parking or pedestrian movements occur.
- Install signs on expressways a minimum height of 7'.
- Install adopt-a-highway signs on Freeways at least 7' above the edge of the driving lane.
- Maximum vertical clearance is 6" greater than the minimum vertical clearance.
3. Offset signs: Use a vertical clearance of 5' above the edge of the driving lane for signs placed 30 feet or more from the edge of the traveled way.
4. Provide a horizontal clearance from edge of shared use path to edge of sign of 3', except where width is limited. Provide a minimum clearance of 2'.

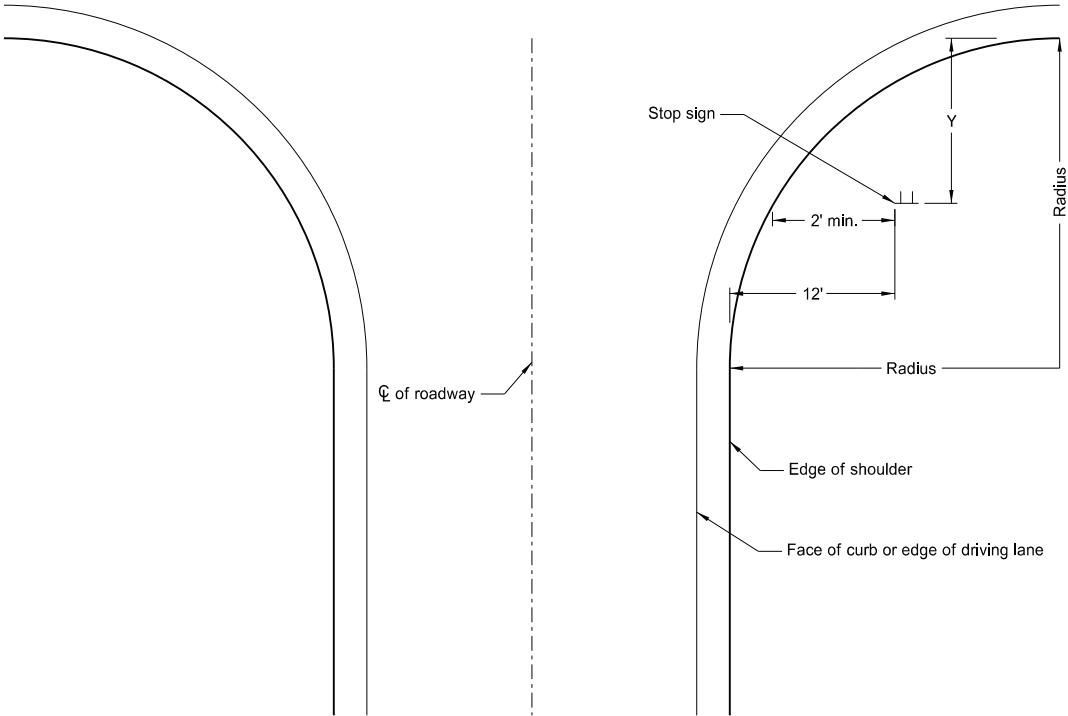


Typical Section (without curb)

Horizontal Clearance Table	
Shoulder Width ft	Offset ft
0 to 2	16
>2 to 4	18
>4 to 6	20
>6 to 8	22
>8 to 10	24



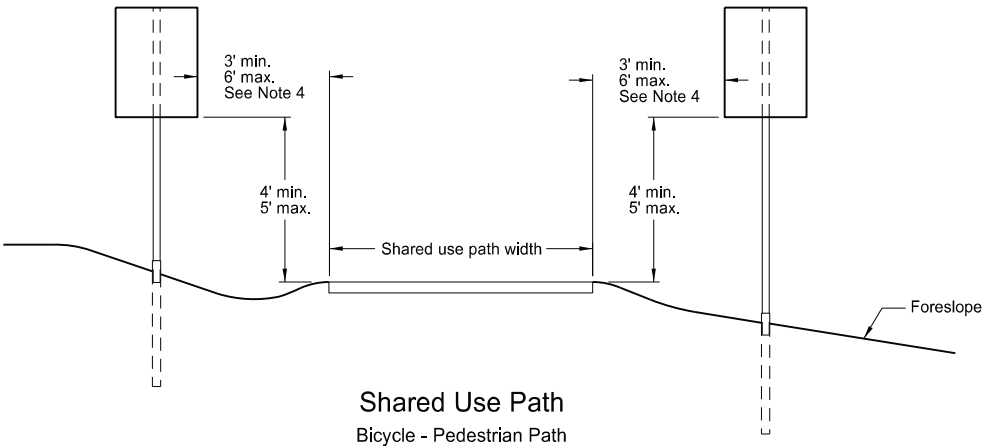
Typical Section (with curb)  
Residential or Business District



Stop Sign Location  
Wide Throat Intersection

Use layout for the placement of "Stop" signs.

Radius ft.	Y-max. ft.	Y-min. ft.
40	50	15
45	50	18
50	50	21
55	50	25
60	50	28
65	50	32
70	50	35
75	50	39
80	50	43



Shared Use Path  
Bicycle - Pedestrian Path

NORTH DAKOTA DEPARTMENT OF TRANSPORTATION	
10-3-13	
REVISIONS	
DATE	CHANGE
7-8-14	Revised note 2, added note 4.
8-30-18	Updated notes to active voice.
8-29-19	New Design Engineer PE Stamp.
8-05-24	Electronic Stamp/Signature.



08/05/24