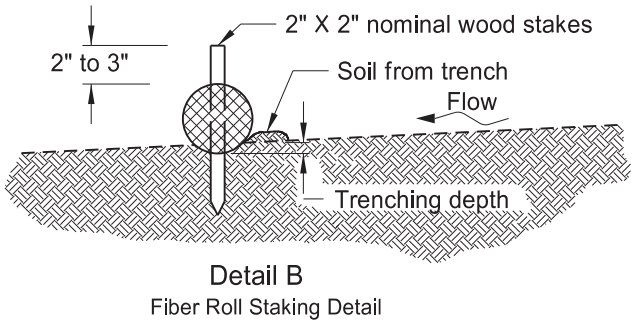
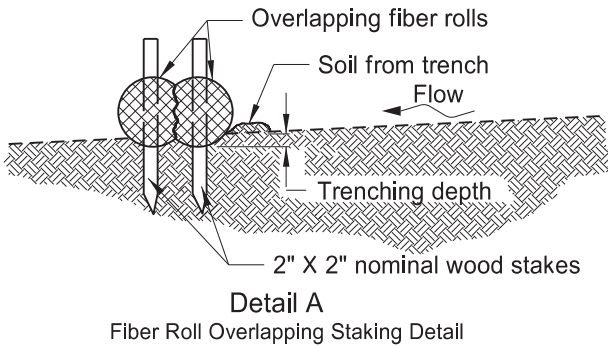
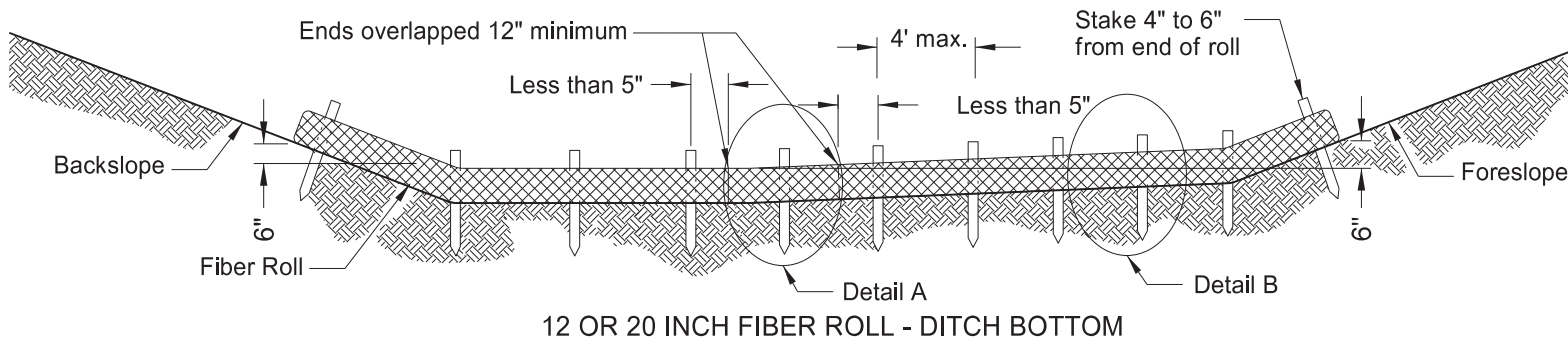
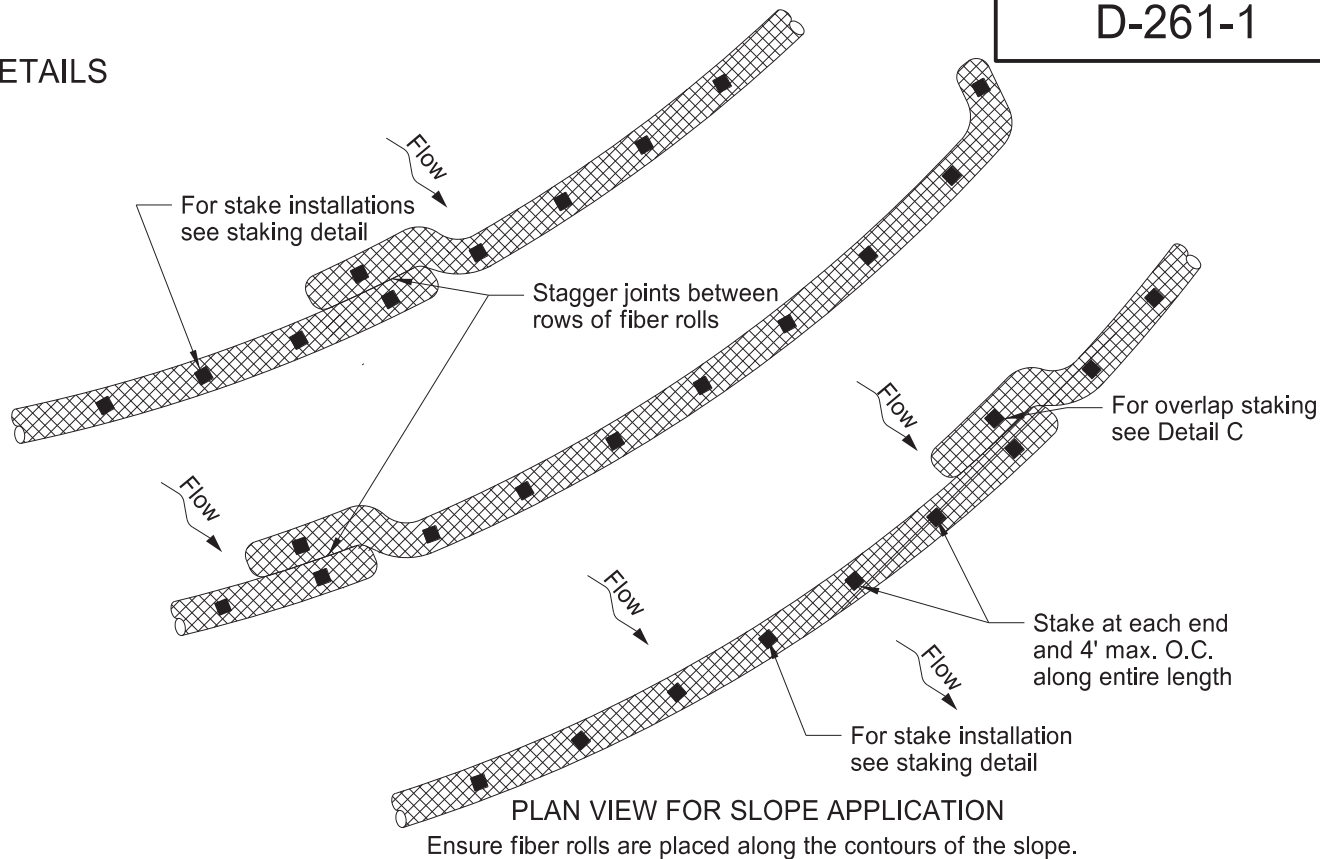
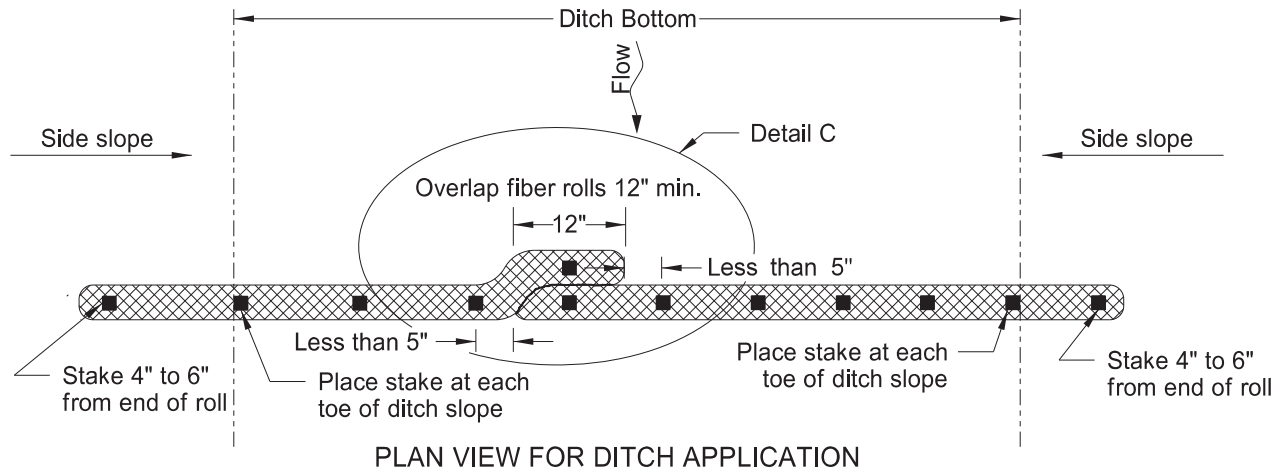
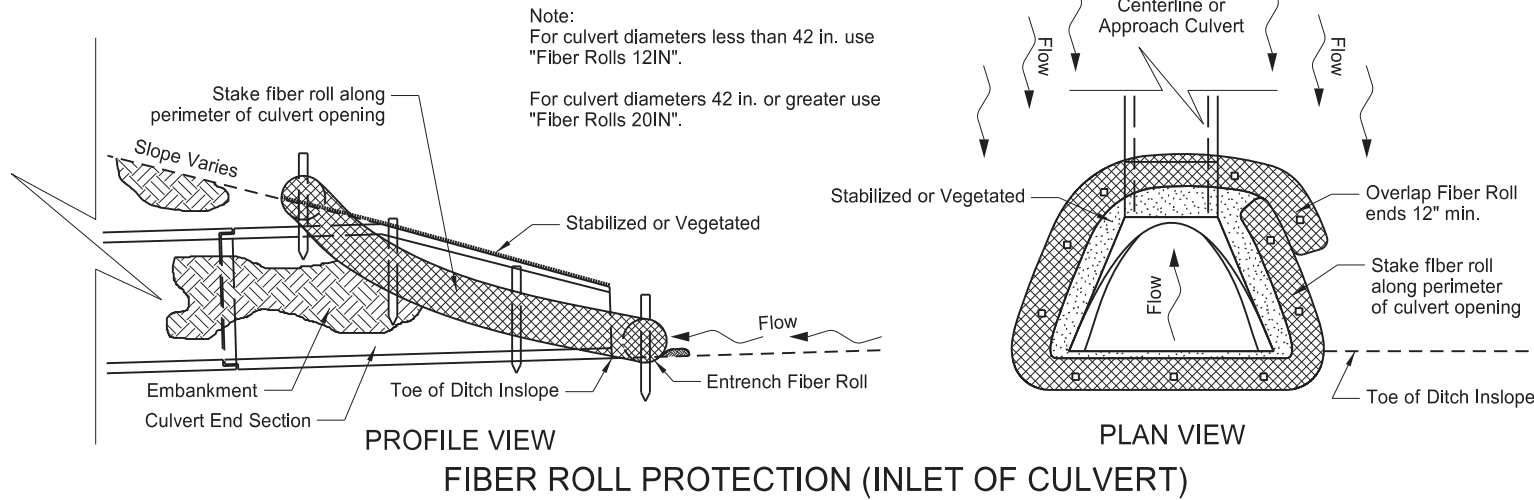


EROSION CONTROL
FIBER ROLL PLACEMENT DETAILS



NOTE: Do not allow runoff to run under or around roll.



FIBER ROLL DIAMETER	NOMINAL STAKE SIZE	MINIMUM STAKE LENGTH	TRENCH DEPTH	
			MINIMUM	MAXIMUM
6"	2" x 2"	18"	2"	2"
9" or 12"	2" x 2"	24"	2"	3"
20"	2" x 2"	36"	3"	5"

NORTH DAKOTA
DEPARTMENT OF TRANSPORTATION

11-18-10

REVISIONS

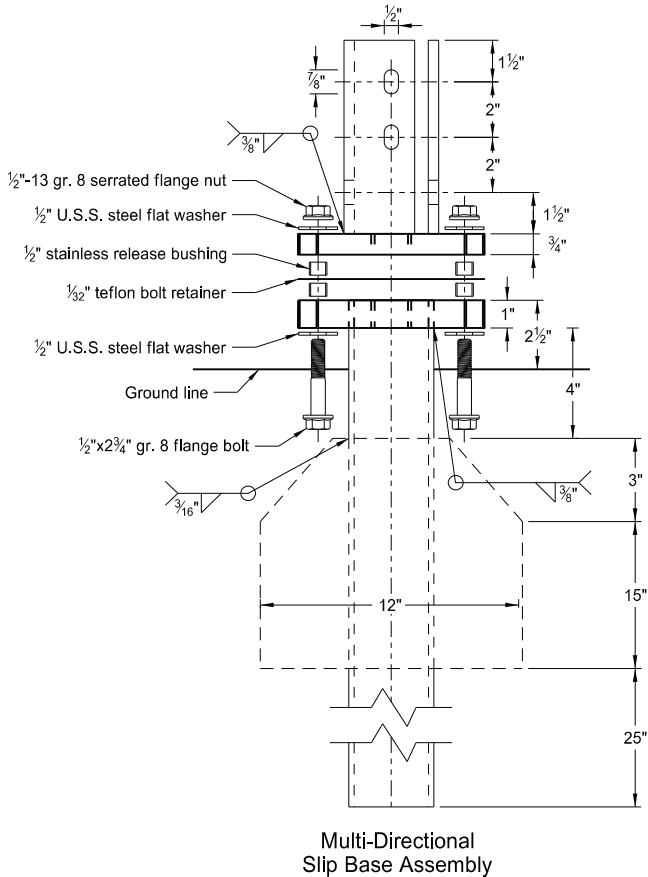
DATE	CHANGE
06-10-13	Added plan view for ditch and slope application. Added table with values for stake and trench dimensions.
10-04-13	Revised fiber roll overlap detail.
06-26-14	Changed standard drawing number from D-708-7 to D-261-1.
08-27-19	New Design Engineer PE Stamp.
04-22-24	Slope Plan View-overlap change.
03-13-25	Added D-708-6 Culvert Inlet detail.

KIRK J. HOFF
REGISTERED
PROFESSIONAL
PE-4683
ENGINEER
NORTH DAKOTA

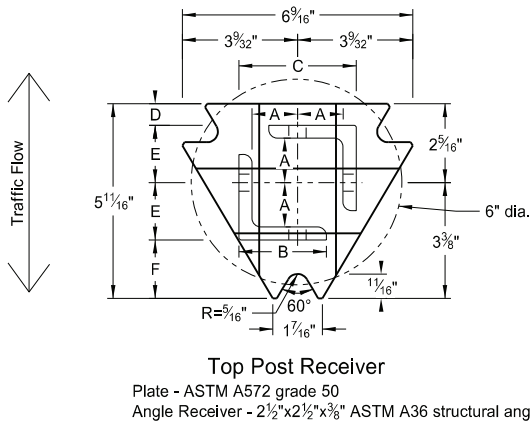
03/13/25

BREAKAWAY SYSTEMS FOR CONSTRUCTION ZONE SIGNS

D-704-7



Perforated Tube



Notes:

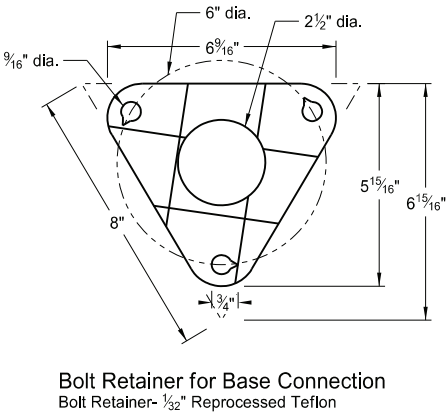
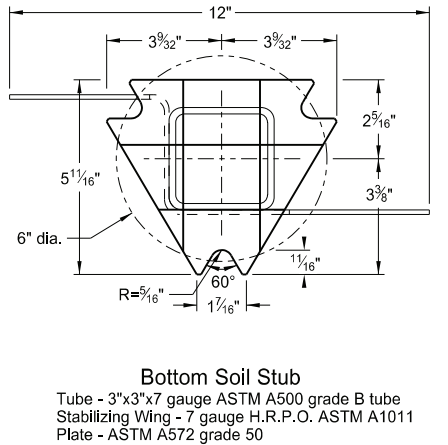
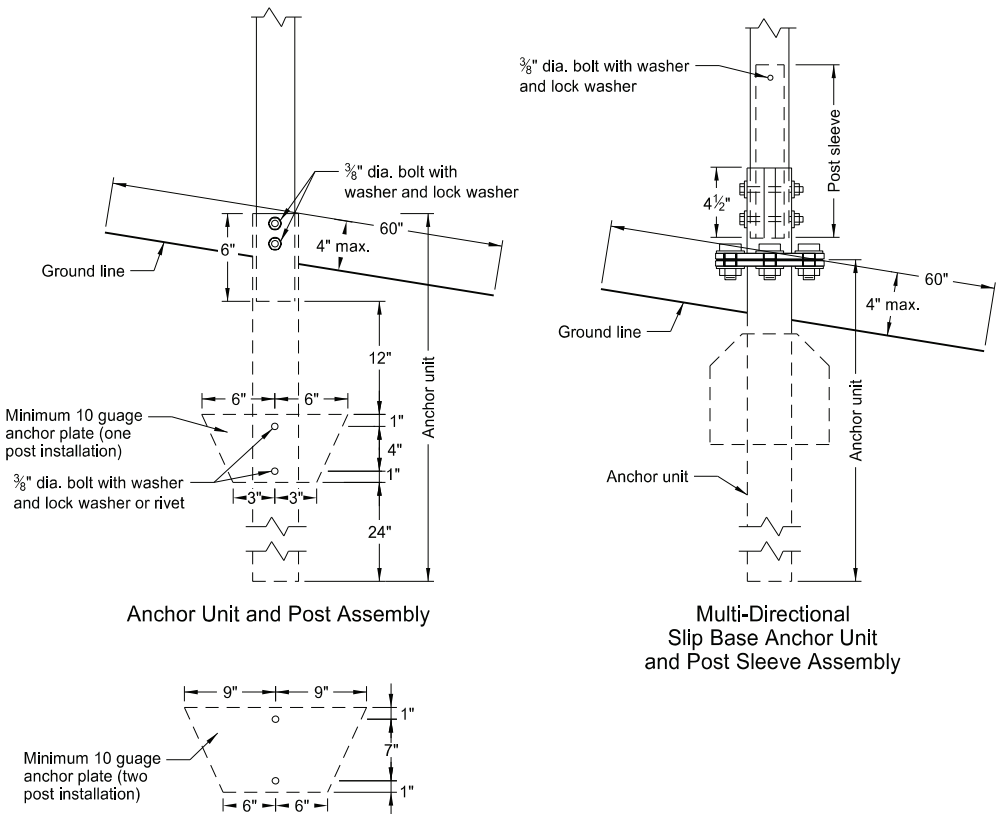
1. Torque slip base bolts as specified by manufacturer.
2. Use anchor with 43.9 KSI yield strength and 59.3 KSI tensile strength.
3. Provide 4" vertical clearance for anchor or breakaway base. Measure the 4"x60" measurement above and below post location and back and ahead of post.
4. In concrete sidewalk, use same anchor without wings.
5. Provide more than 7' between the first and fourth posts of a four post sign.

Telescoping Perforated Tube						
Number of Posts	Post Size in.	Wall Thickness Gauge	Sleeve Size in.	Wall Thickness Gauge	Slip Base	Anchor Size without Slip Base in.
1	2	12			No	2 1/4
1	2 1/4	12			No	2 1/2
1	2 1/2	12			(A)	3
1	2 1/2	10			Yes	
1	2 1/4	12	2	12	Yes	
1	2 1/2	12	2 1/4	12	Yes	
2	2	12			No	2 1/4
2	2 1/4	12			No	2 1/2
2	2 1/2	12			Yes	
2	2 1/2	12			Yes	
2	2 1/4	10	2	12	Yes	
2	2 1/2	12	2 1/4	12	Yes	
3 & 4	2 1/2	12			Yes	
3 & 4	2 1/2	10			Yes	
3 & 4	2 1/2	12	2 1/4	12	Yes	
3 & 4	2 1/4	12	2	12	Yes	
3 & 4	2 1/2	10	2 3/16	10	Yes	

Properties of Telescoping Perforated Tube						
Tube Size in.	Wall Thickness in.	U.S. Standard Gauge	Weight per Foot lbs.	Moment of Inertia in. ⁴	Cross Sec. Area in. ²	Section Modulus in. ³
1 1/2 x 1 1/2	0.105	12	1.702	0.129	0.380	0.172
2 x 2	0.105	12	2.416	0.372	0.590	0.372
2 1/4 x 2 1/4	0.105	12	2.773	0.561	0.695	0.499
2 3/16 x 2 3/16	0.135	10	3.432	0.605	0.841	0.590
2 1/2 x 2 1/2	0.105	12	3.141	0.804	0.803	0.643
2 1/2 x 2 1/2	0.135	10	4.006	0.979	1.010	0.785

Top Post Receiver Data Table						
Square Post Sizes (B)	A	B	C	D	E	F
2 3/16"x10 ga.	1 5/16"	2 1/2"	3 1/32"	2 5/32"	1 33/64"	1 7/8"
2 1/2"x10 ga.	1 3/32"	2 1/2"	3 5/16"	5/8"	1 21/32"	1 3/4"

- (A) Use breakaway base when support is placed in weak soils. Engineer determines if soils are weak.
- (B) For additional wind load, insert the 2 3/16"x10 ga. into 2 1/2"x10 ga.



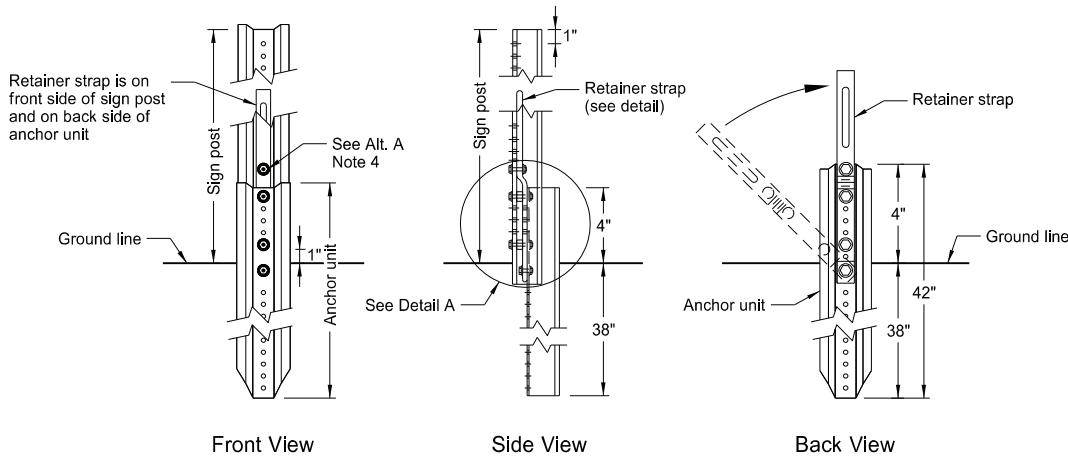
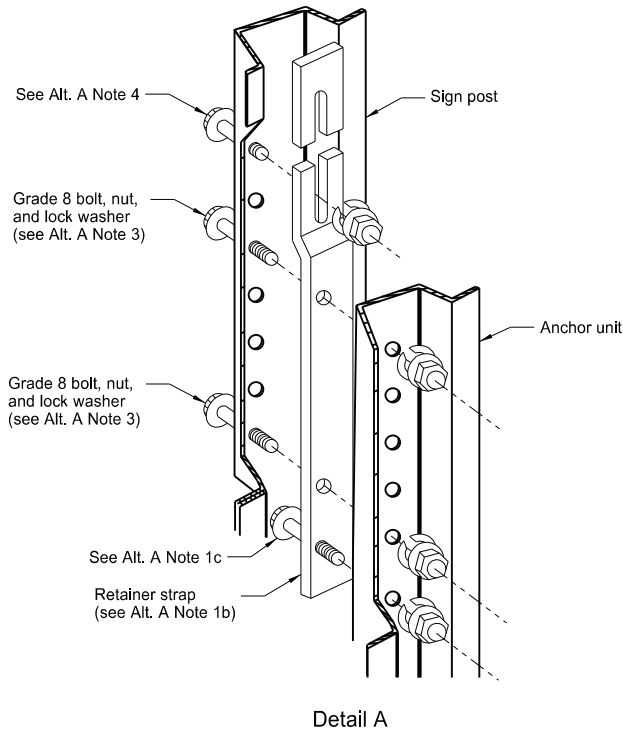
NORTH DAKOTA DEPARTMENT OF TRANSPORTATION	
2-28-14	
REVISIONS	
DATE	CHANGE
9-27-17	Updated to active voice
10-03-19	New Design Engr PE Stamp
8-01-24	Electronic Stamp/Signature



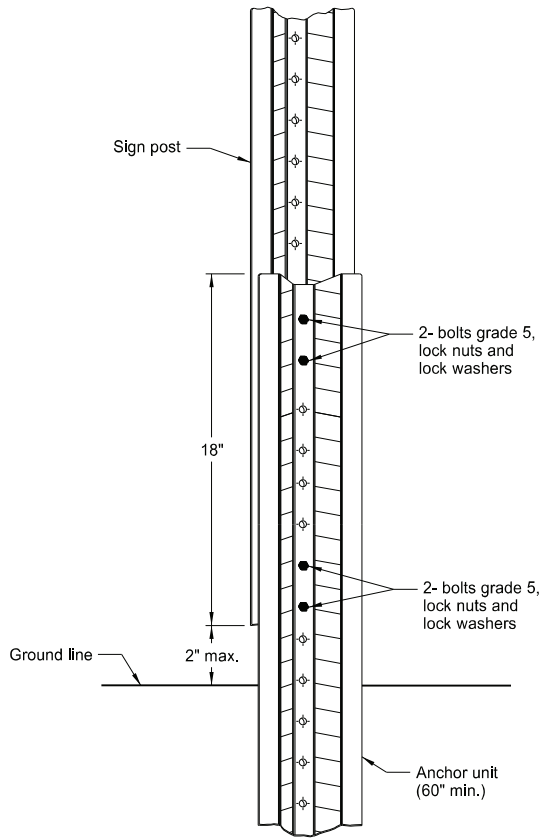
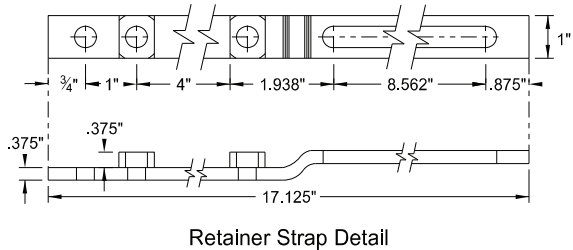
BREAKAWAY SYSTEMS FOR CONSTRUCTION ZONE SIGNS

D-704-8

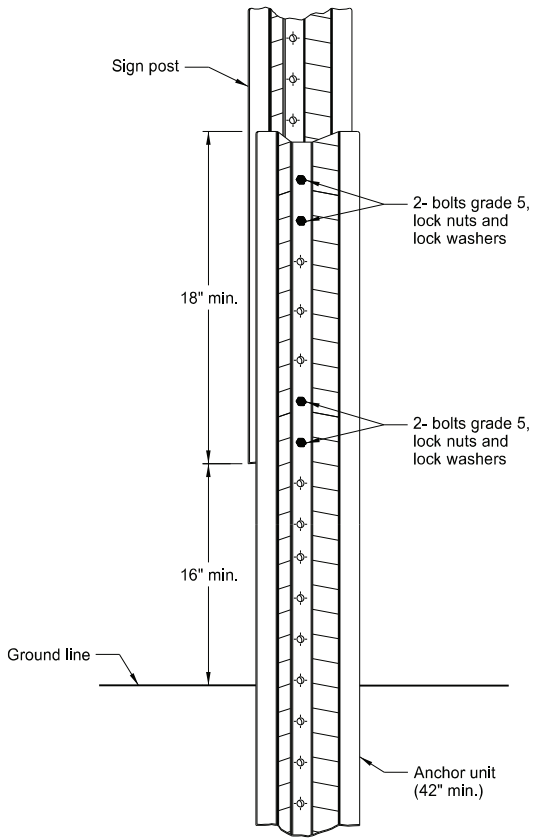
U-Channel Post



Breakaway U-Channel Detail Alternate A
Install a maximum of 2 posts within 7'.



Breakaway U-Channel Splice Detail Alternate B
(2.5 and 3 lb/ft)
Install a maximum of 3 posts within 7'.



Breakaway U-Channel Splice Detail Alternate C
(2.5 and 3 lb/ft)
Install a maximum of 3 posts within 7'.

Alternate A Steps of Installation:

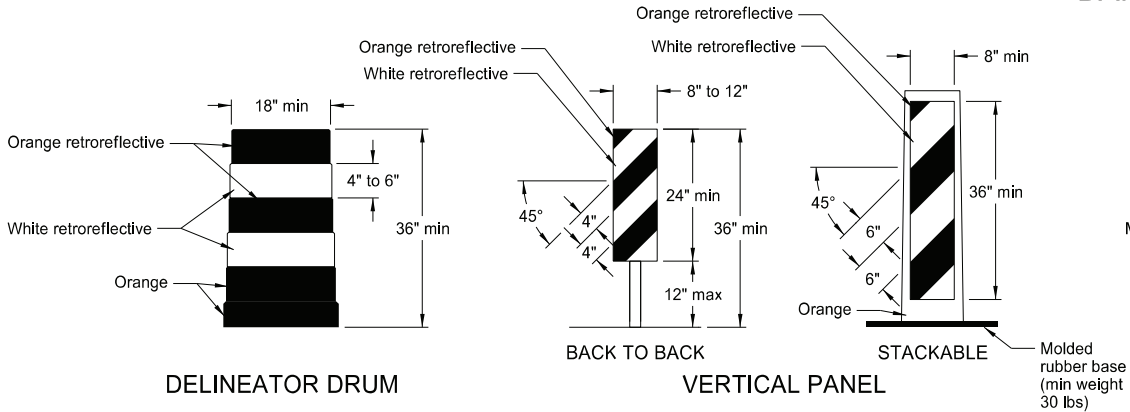
- a) Drive anchor unit to within 12" of ground level.
b) Establish proper assembly by lining up bottom hole of retainer strap with 6th hole from the top of the anchor unit.
c) Assemble strap to back of anchor unit using 5/16"x2" bolt, lock washer and nut.
d) Rotate strap 90° to left.
- a) Drive anchor unit to 4" above ground.
b) Rotate strap to vertical position.
- a) Place 5/16"x2" bolt, lock washer and nut in bottom of sign post to facilitate alignment of sign post with proper hole in anchor unit.
b) Alternately tighten two connector bolts.
- Complete assembly by tightening 5/16"x2" bolt (this fastens sign post to retainer strap).
- Properly nest base post, strap, and sign post. Proper nesting occurs when all flat surfaces of the base post, strap, and sign post at the bolts have full contact across the entire width.

NORTH DAKOTA DEPARTMENT OF TRANSPORTATION	
2-28-14	
REVISIONS	
DATE	CHANGE
9-27-17	Updated to active voice
10-03-19	New Design Engr PE Stamp
8-01-24	Electronic Stamp/Signature



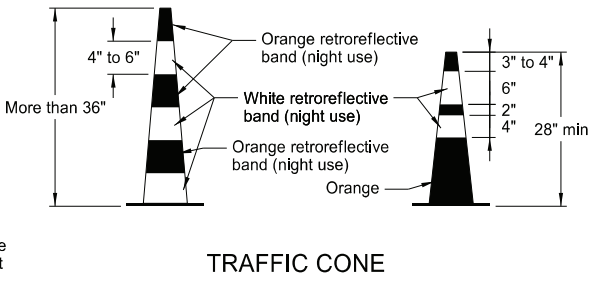
08/01/24

BARRICADE AND CHANNELIZING DEVICE DETAILS

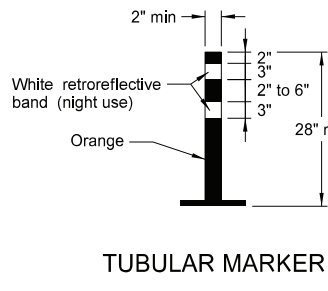


Provide horizontal, circumferential, alternating orange and white retroreflective stripes 4" to 6" wide for drum markings. Use a minimum of two orange and two white stripes with the top stripe being orange for each drum. Do not exceed 3" nonretroreflectORIZED spaces between the horizontal orange and white stripes. Avoid placement of stripes on drum ribs or indentations. Use closed top drums that will not allow collection of debris. Do not place ballast on the top of drum.

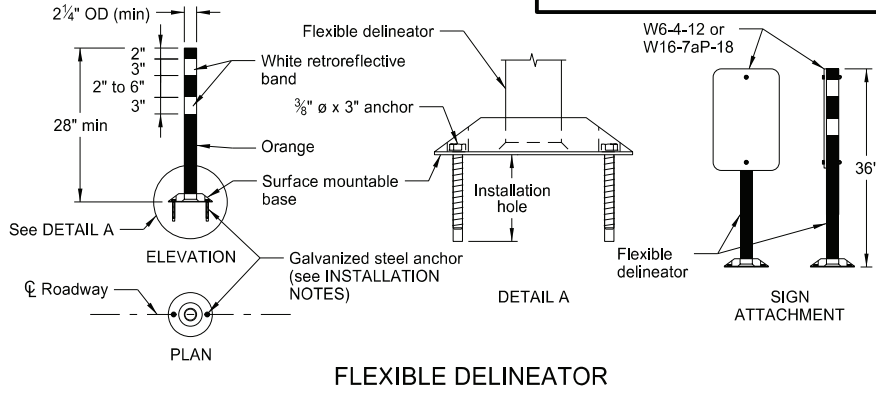
Provide alternating orange and white retroreflective stripes, sloping downward in direction vehicular traffic is to pass. Place retroreflective sheeting on both sides of panel with a minimum of 270 square inches of retroreflective area facing vehicular traffic. Where the height of the retroreflective material on the vertical panel is 36 inches or more, use a stripe width of 6 inches.



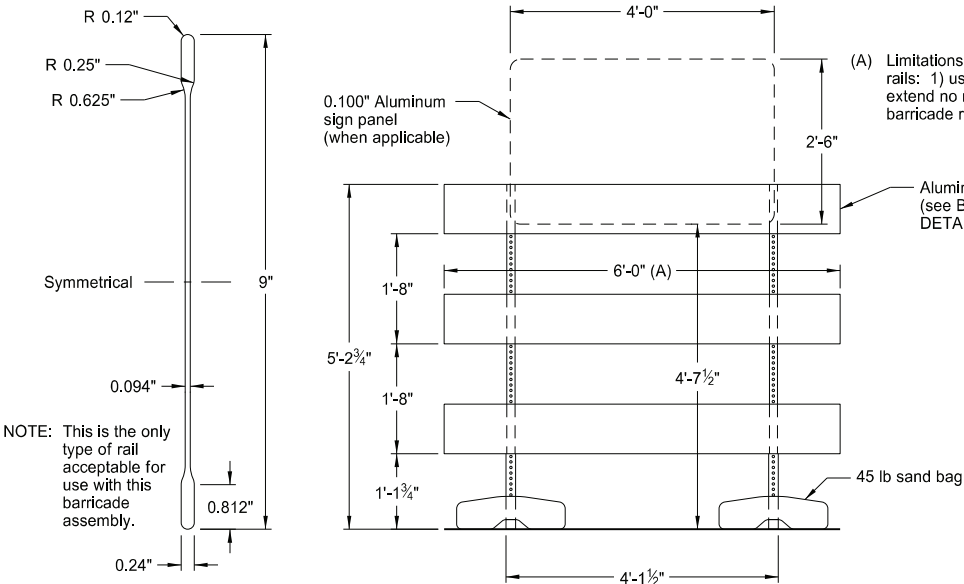
Provide retroreflectORIZATION of cones more than 36" in height by alternating orange and white retroreflective stripes. Use a minimum of two orange and two white stripes for each cone with the top stripe being orange. Use maximum 3" nonretroreflectORIZED space between the orange and white stripes.



Provide retroreflectORIZATION of tubular markers more than 42" in height by alternating four 4" to 6" wide orange and white stripes with the top stripe being orange.



- INSTALLATION NOTES:
1. Drill installation holes to diameter and depth required by manufacturer's specifications.
 2. For removal, remove anchors and fill installation hole with an epoxy designed to bond to pavement surface.
 3. In lieu of bolted down base, use an 8" x 8" butyl pad or hot melt butyl. Remove butyl as close as possible to pavement surface.

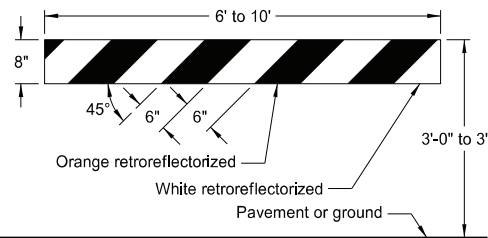


BARRICADE BLADE DETAIL

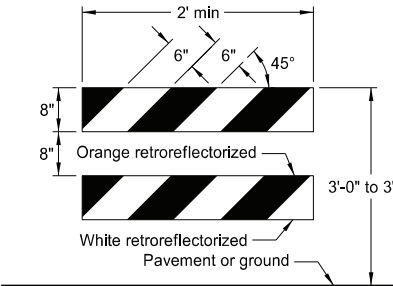
ELEVATION VIEW

BARRICADE ASSEMBLY DETAIL
(Aluminum Barricade Rails)

NOTE: For barricade markings use alternating orange and white retroreflective stripes, sloping downward in the direction traffic is to pass. Place retroreflective sheeting on both sides of the rails with a minimum of 270 square inches of visible retroreflective area facing vehicular traffic. When the barricade length is less than 36", use a rail stripe width of 4".

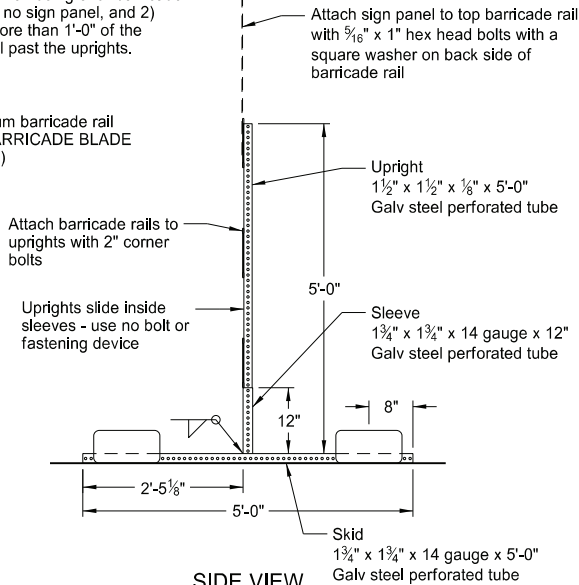


TYPE I BARRICADE



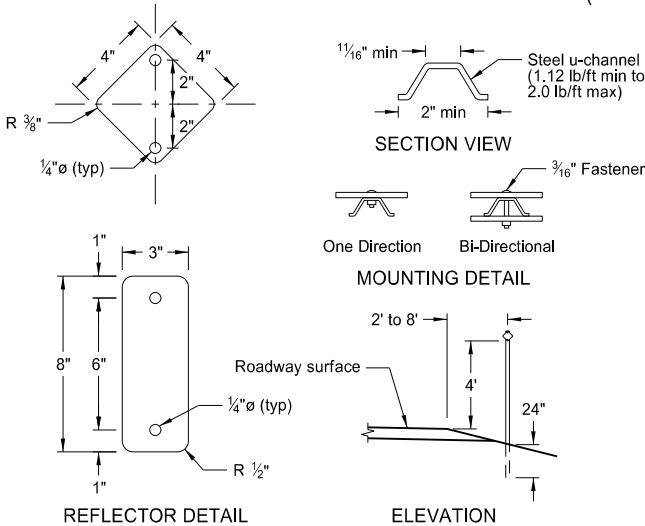
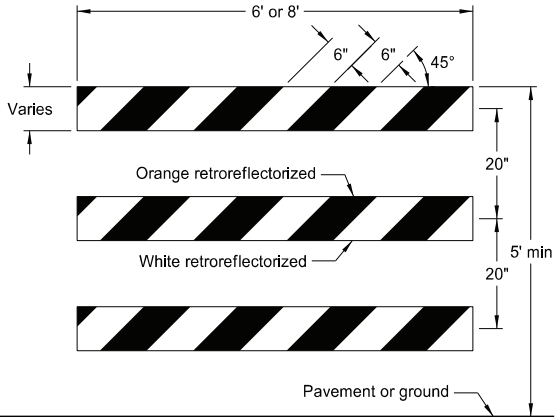
TYPE II BARRICADE

BARRICADE RAIL DETAILS

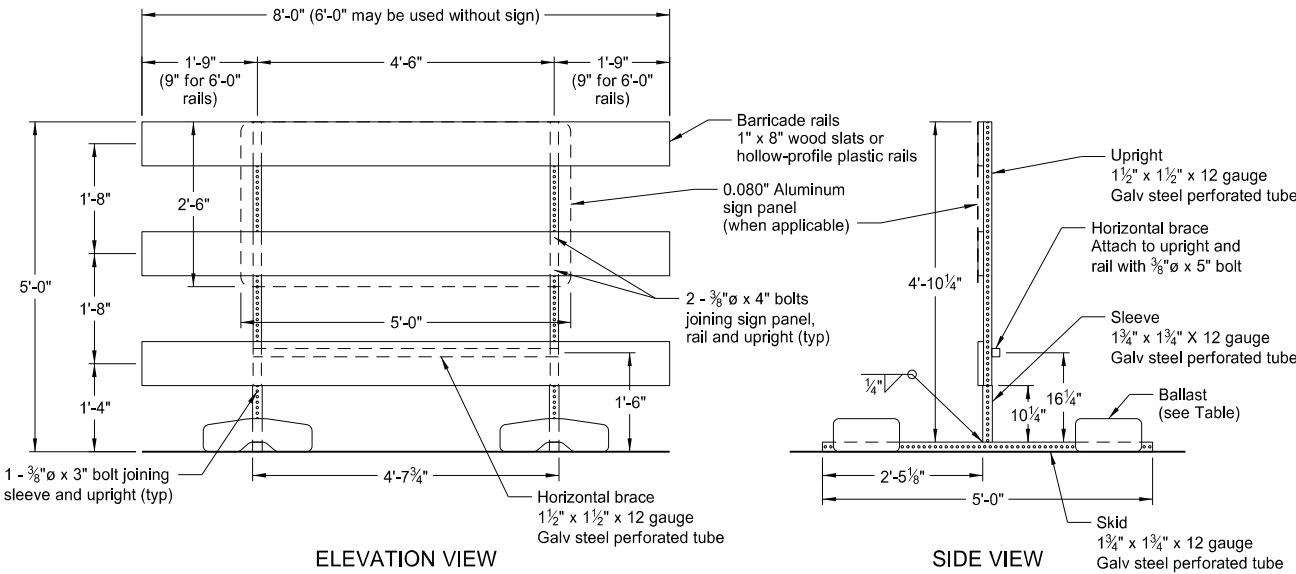


SIDE VIEW

TYPE III BARRICADE



DELINEATORS



ELEVATION VIEW

BARRICADE ASSEMBLY DETAIL
(Wood or Plastic Rails)

MINIMUM BALLAST
(For each side of barricade support)

Without Sign	4 - 25 lb sandbags
With Sign	6 - 25 lb sandbags

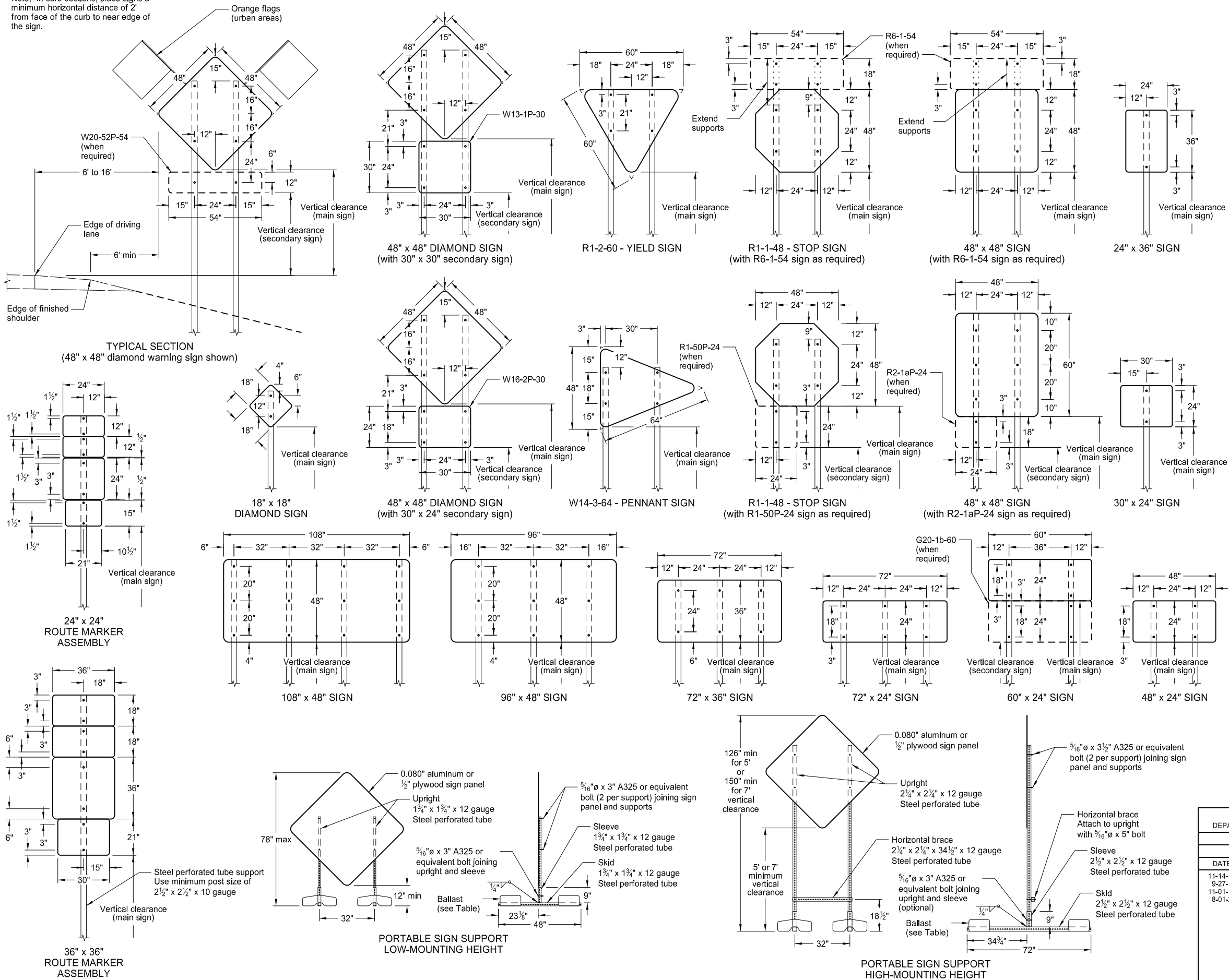
Note: Number of sandbags based on a wind speed of 55 MPH. Sandbags assumed to be placed at or near the ends of the skids.

NORTH DAKOTA DEPARTMENT OF TRANSPORTATION	
10-3-13	
REVISIONS	
DATE	CHANGE
9-27-17	Updated to active voice
11-01-19	Revised details for Flexible Delineator
8-01-24	Electronic Stamp/Signature



CONSTRUCTION SIGN PUNCHING AND MOUNTING DETAILS

Note: In curb sections, place signs a minimum horizontal distance of 2' from face of the curb to near edge of the sign.



NOTES:

1. Sign Supports: Galvanize or paint supports. Minimum post sizes are 2.5 lb/ft u-channel or 2" x 2" x 12 gauge steel perforated tube, except where noted. When installing signs on u-channel, minimum post size for assemblies containing a secondary sign is 3.0 lb/ft. Post sizes based on a wind speed of 55 MPH.

Place signs over 50 square feet on 2½" x 2½" perforated tube supports as a minimum.

Do not attach guy wires to sign supports. Attach wind beams behind sign panels when used with u-posts.
2. Sign Panels: Provide sign panels made of 0.100" aluminum, ½" plywood, or other approved material, except where noted. Punch all holes round for ⅜" bolts.
3. Alternate Messages: Install and remove alternate message signs on reflectorized plate (without borders) as required. (i.e. "Left" and "Right" message on lane closure sign)
4. Route Marker Auxiliary Signs: Provide route marker auxiliary signs, such as the cardinal direction and directional arrows, with a background and legend that match the route marker they are used with:

Interstate - white legend on blue background
Interstate Business Loop - white legend on green background
US and State - black legend on white background
County - yellow legend on blue background

5. Vertical Clearance: Install signs with a vertical clearance of 5'-0" (see TYPICAL SECTION.) In areas where parking or pedestrian movements are likely or the view of the sign may be obstructed, install signs with a vertical clearance of 7'-0" from the top of the curb or from the near edge of the driving lane in absence of a curb.

The vertical clearance to secondary signs is 1'-0" less than the vertical clearance stated above.

Provide a minimum clearance of 7'-0" from the ground at the post for signs with an area exceeding 50 square feet.

6. Portable Signs: Provide portable signs that meet the vertical clearance stated above when it is necessary to place signs within the pavement surface.

Use of low-mounting height (minimum 12" vertical clearance) portable signs for 5 days or less, is allowed as long as the view of the sign is not obstructed. Time delays caused by unforeseen circumstances, such as equipment breakdown, rain, subgrade failures, etc., will not accrue towards the 5 day period. Use of R9-8 through R9-11a series, W1-6 through W1-8 series, M4-10, and E5-1 is allowed for longer than 5 days.

Restrict signs mounted on portable sign supports shown in the LOW-MOUNTING HEIGHT and HIGH-MOUNTING HEIGHT details to a maximum surface area of 16 square feet.

MINIMUM BALLAST
(For each side of sign support base)

Sign Panel Mounting Height (ft)	Number of 25 lb sandbags for 4' x 4' sign panel
1'	6
5'	8
7'	10

Note: The number of sandbags are based on a wind speed of 55 MPH. Place sandbags at or near the ends of skids.

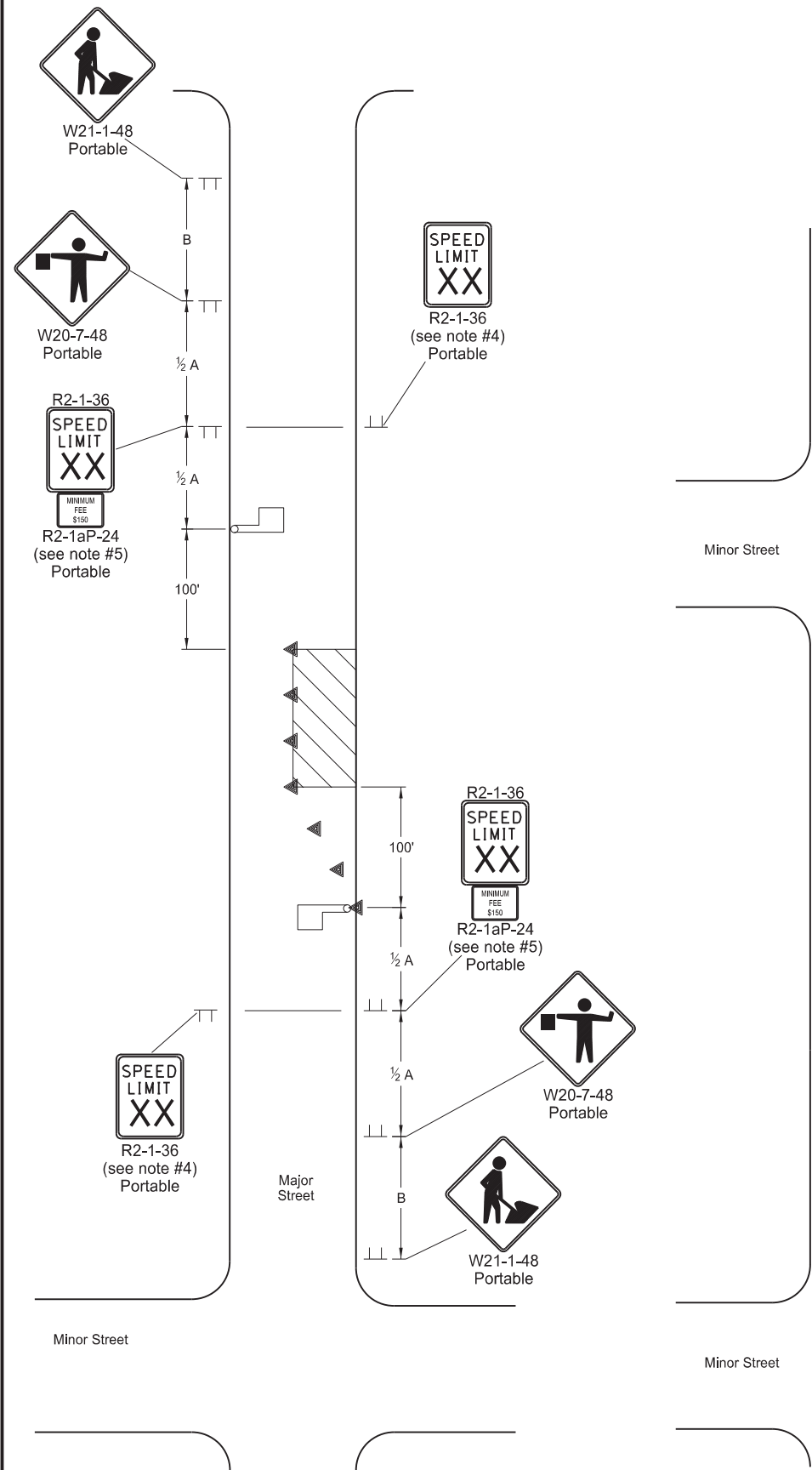
NORTH DAKOTA DEPARTMENT OF TRANSPORTATION	
10-4-13	
REVISIONS	
DATE	CHANGE
11-14-13	Revised Note 6
9-27-17	Updated to active voice
11-01-19	Revised 60"x24" sign detail
8-01-24	Electronic Stamp/Signature



08/01/24

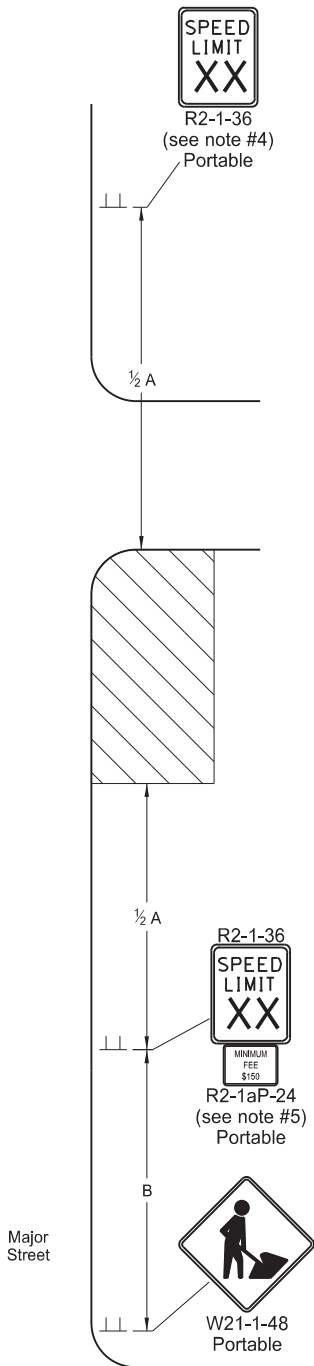
LANE CLOSURES ON URBAN STREETS LAYOUTS

D-704-25



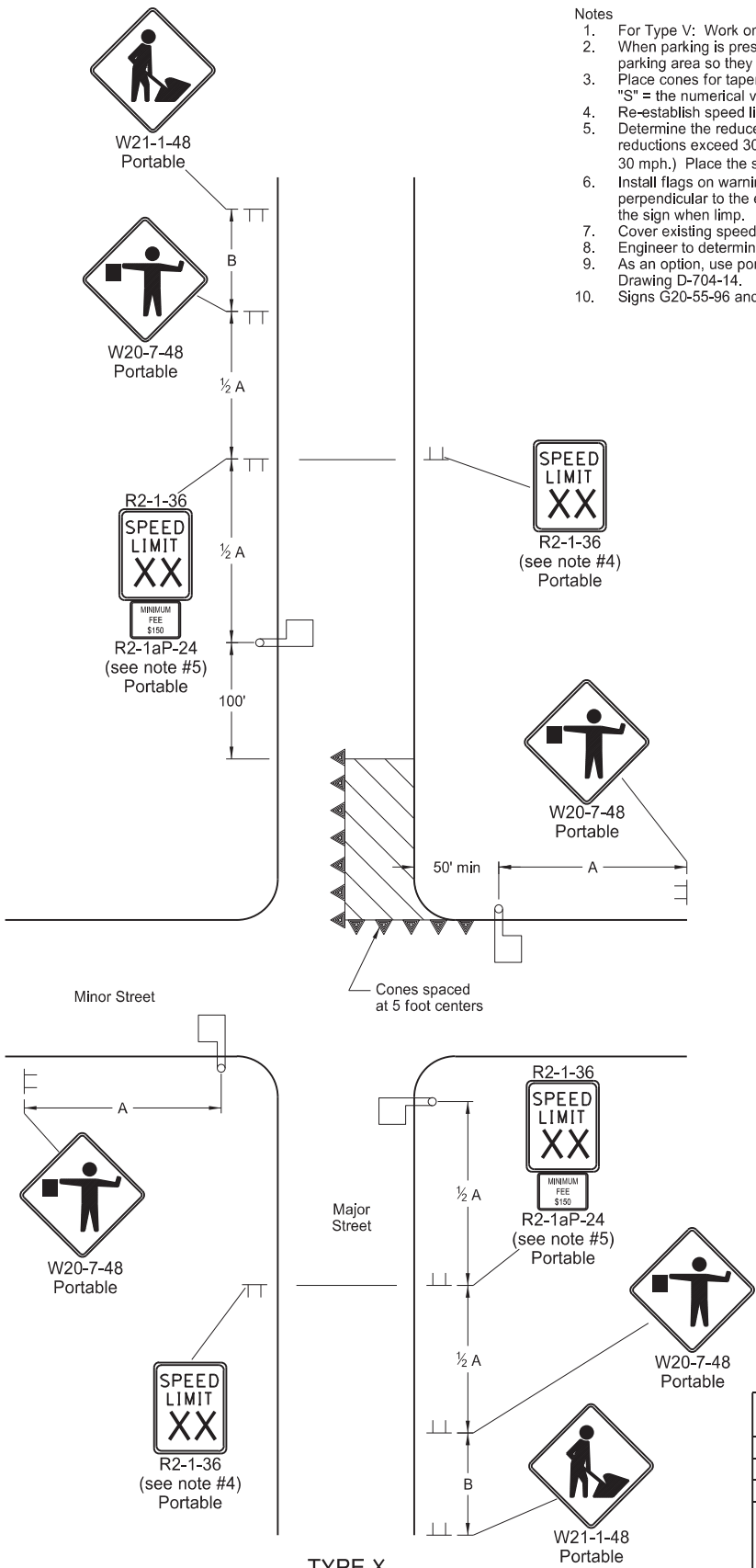
TYPE V
LANE CLOSURE ON URBAN STREET

Portion of roadway closed to traffic only during daylight hours (mid block location).



TYPE W
WORK BEYOND CURB ON URBAN STREET

Work area outside driving lane and no closure necessary.



TYPE X
LANE CLOSURE NEAR INTERSECTION ON URBAN STREET

Portion of roadway closed to traffic only during daylight hours (end block location).

- Notes
1. For Type V: Work on one side of roadway at a time so as not to block off more than one lane of traffic.
 2. When parking is present, place signs so they are entirely visible above parked vehicles or at the edge of the parking area so they are visible to oncoming traffic. Place signs on portable mounts when located on roadway.
 3. Place cones for tapering traffic at 3 equal spaces and cones for tangents at dimension "S". "S" = the numerical value of speed limit.
 4. Re-establish speed limit. Determine exact speed limit in the field, dependent on location and conditions.
 5. Determine the reduced speed limit based on the in-place speed limit before construction. Where speed reductions exceed 30 mph, install a second speed limit sign with the desired speed reduction (not to exceed 30 mph.) Place the second speed limit sign at 1/2 B.
 6. Install flags on warning signs in urban areas when signs are not portable. Mount 24 inches square flags perpendicular to the edges of the sign, and at such a distance above the edge that the flag does not touch the sign when limp.
 7. Cover existing speed limit signs within reduced speed zones.
 8. Engineer to determine safe speed, when necessary.
 9. As an option, use portable sign supports in lieu of post mounted signs in accordance with NDDOT Standard Drawing D-704-14.
 10. Signs G20-55-96 and R2-1aP-24 are not required for urban projects.

ADVANCE WARNING SIGN SPACING			
Road Type	Distance Between Signs Min. (ft)		
	A	B	C
Urban - Low Speed (30 mph or less)	150	150	150
Urban - Low Speed (over 30 to 40 mph)	280	280	280
Urban - High Speed (over 40 mph to 50 mph)	360	360	360
Rural - High Speed (over 50 mph to 65 mph)	720	720	720
Urban Expressway and Freeway (55 mph to 60 mph)	850	1350	2200
Rural Expressway and Freeway (70 mph to 80 mph)	1000	1500	2640
Interstate/4-Lane Divided (Maintenance and Surveying)	750	1000	1500

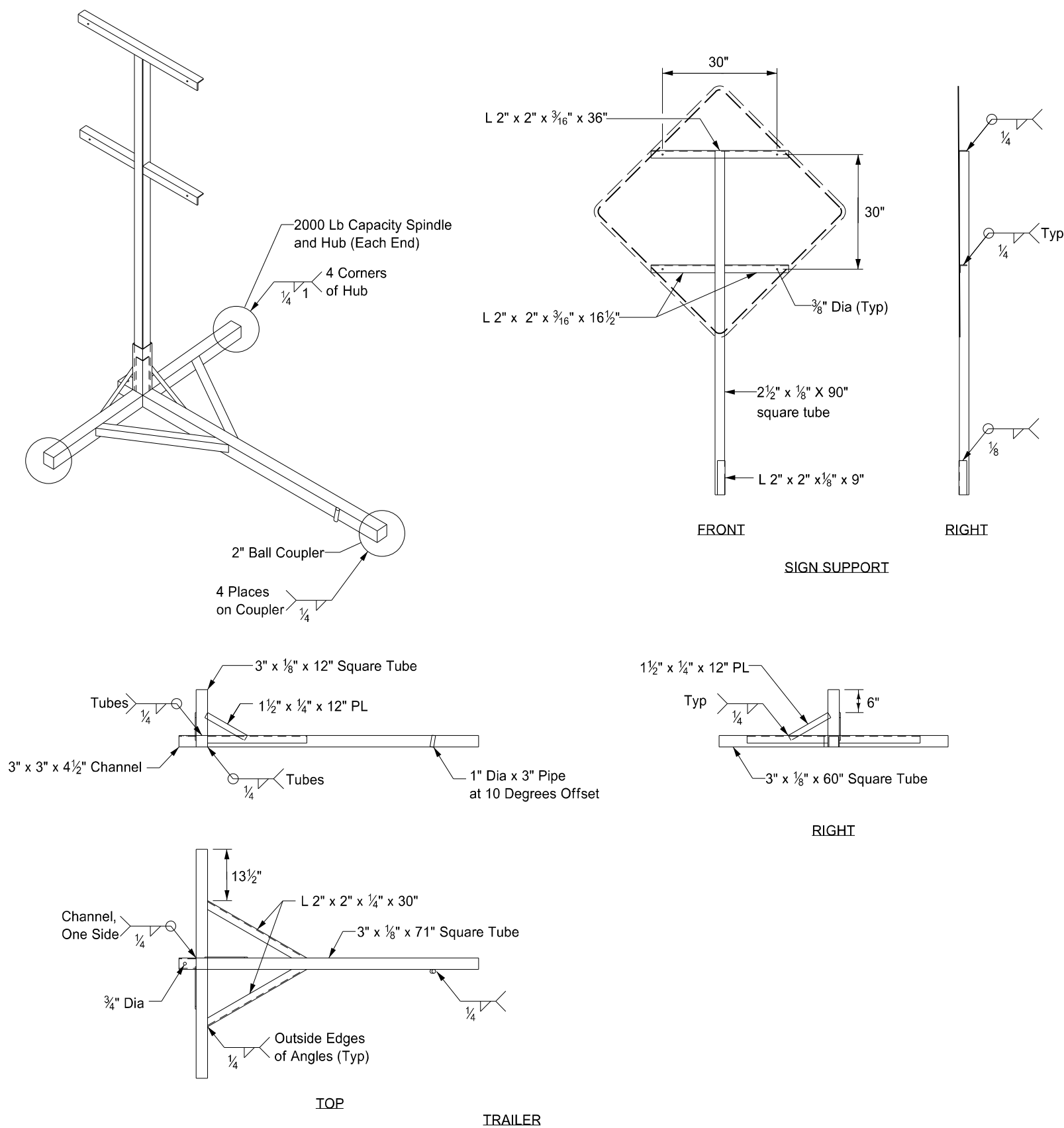
KEY	
	Sign
	Cones
	Work area
	Flagger

NORTH DAKOTA DEPARTMENT OF TRANSPORTATION	
9-27-13	
REVISIONS	
DATE	CHANGE
08-17-17	Updated notes & removed signs
11-01-19	Revised note & added Min Fee sign
08-01-24	Electronic Stamp/Signature
06-30-25	Legislative Changes



PORTABLE SIGN SUPPORT ASSEMBLY

D-704-50

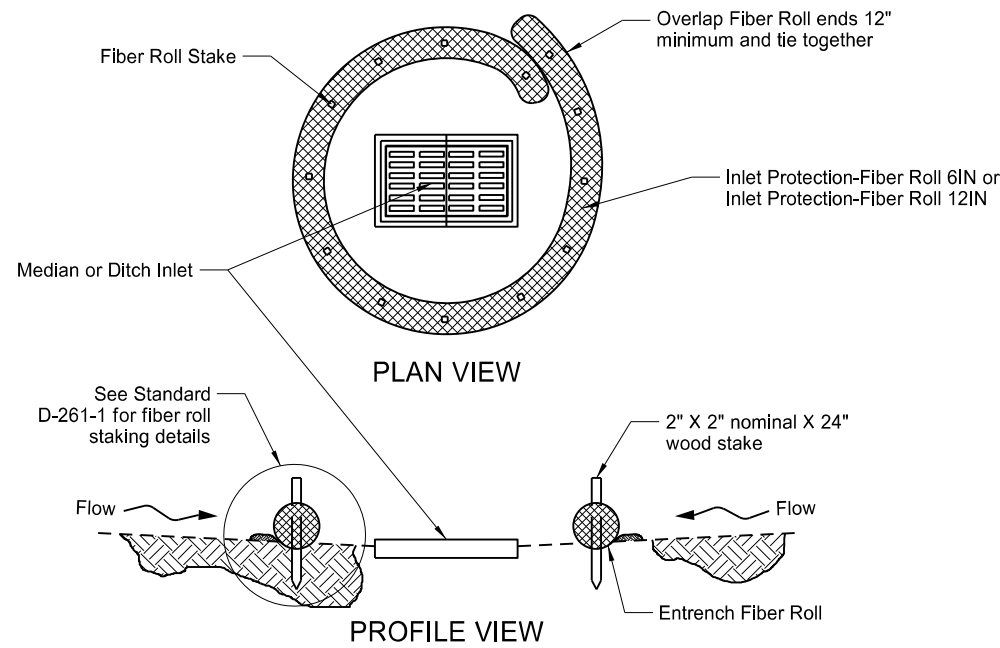


- Notes:
- 1. Maximum 250 pound weight of assembly.
 - 2. Use a 14" wheel and tire.
 - 3. Use no automotive and equipment axle assemblies for trailer-mounted sign supports.
 - 4. Other NCHRP 350 or MASH crash tested assemblies are acceptable.

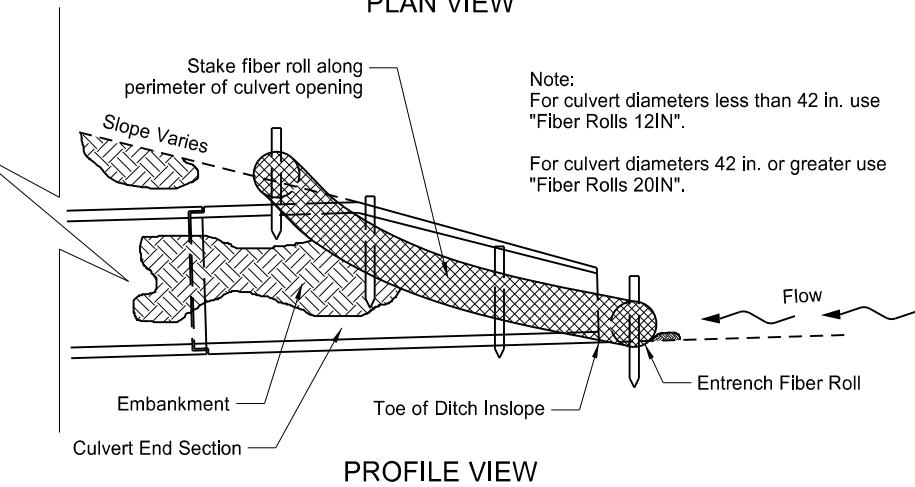
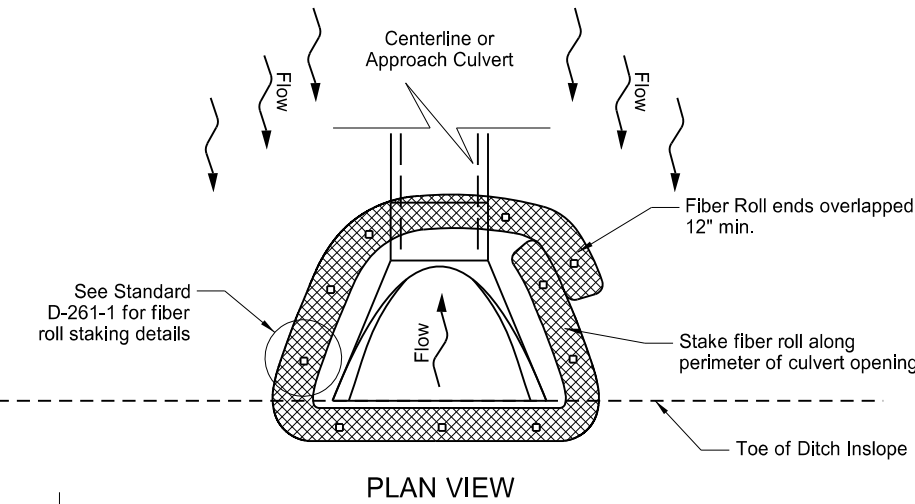
NORTH DAKOTA DEPARTMENT OF TRANSPORTATION	
11-23-10	
REVISIONS	
DATE	CHANGE
12/02/2020	Updated Note to active voice.



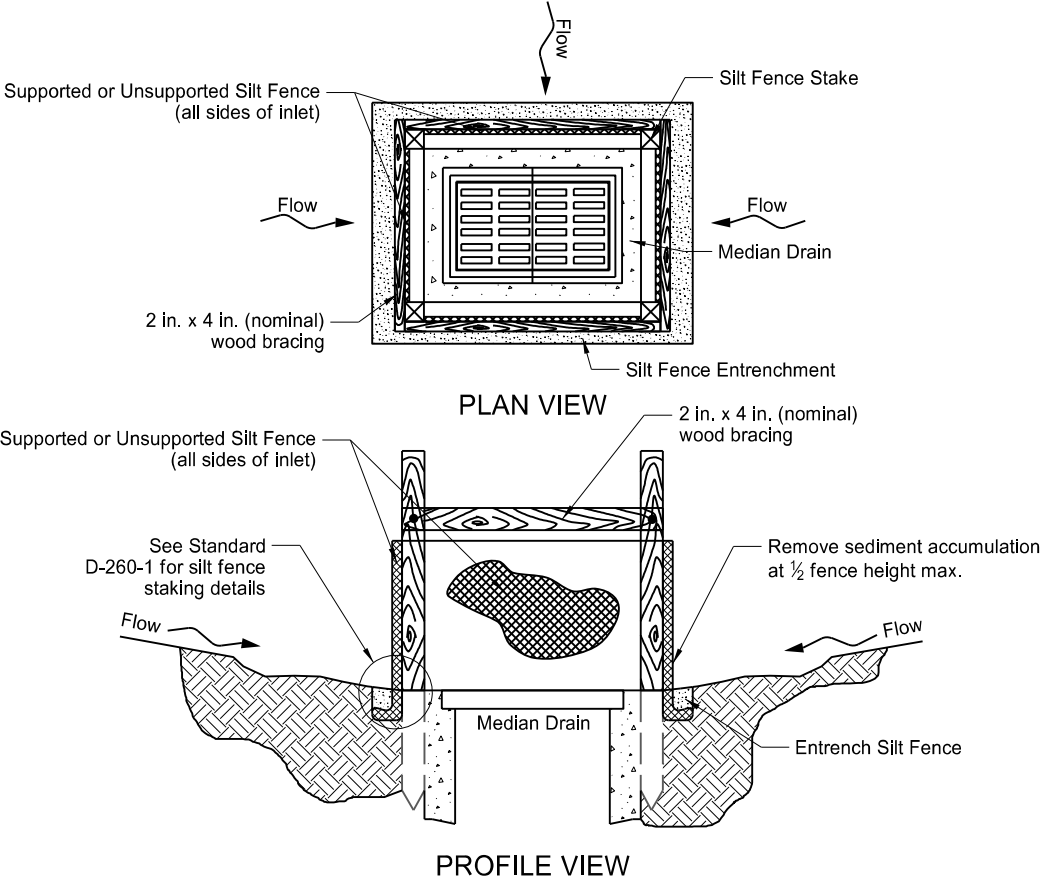
EROSION AND SILTATION CONTROLS
MEDIAN OR DITCH INLET PROTECTION



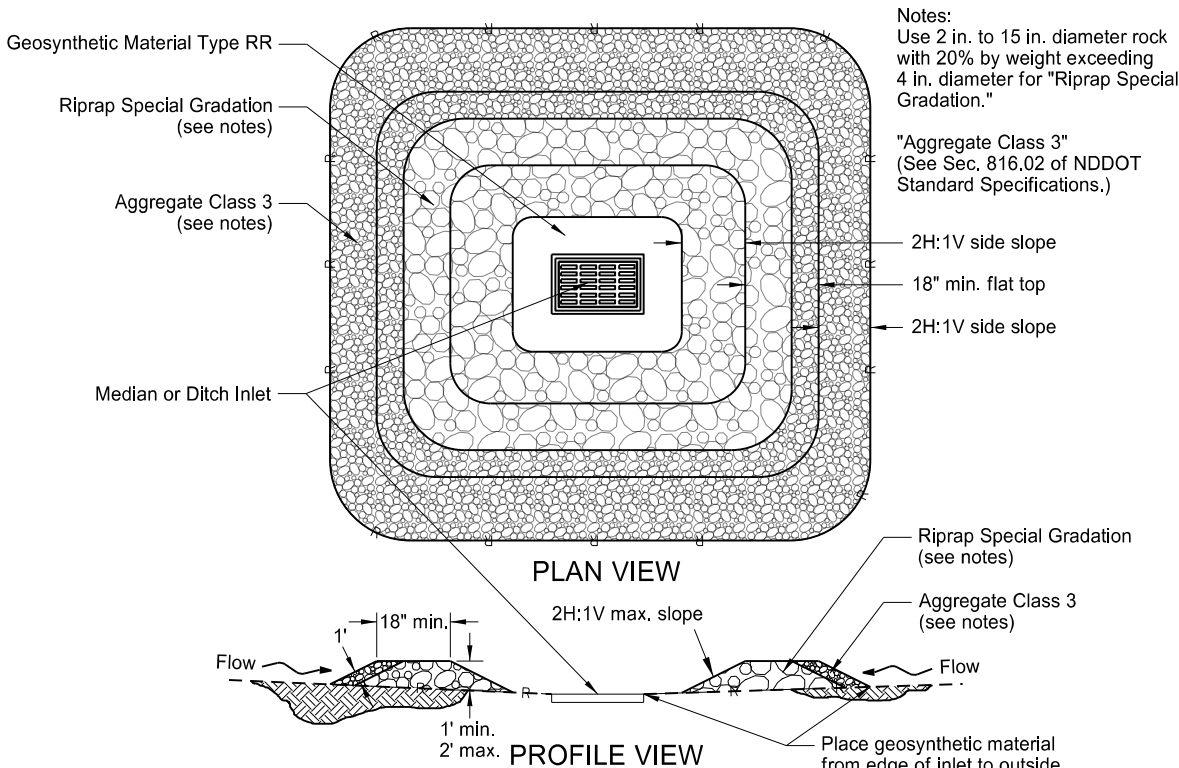
FIBER ROLL PROTECTION
(MEDIAN OR DITCH INLET)



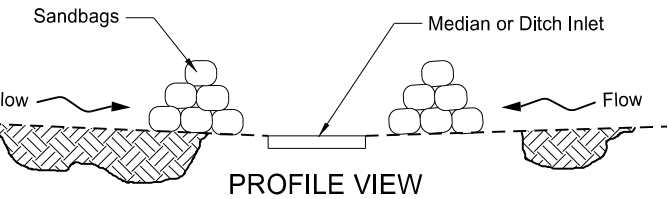
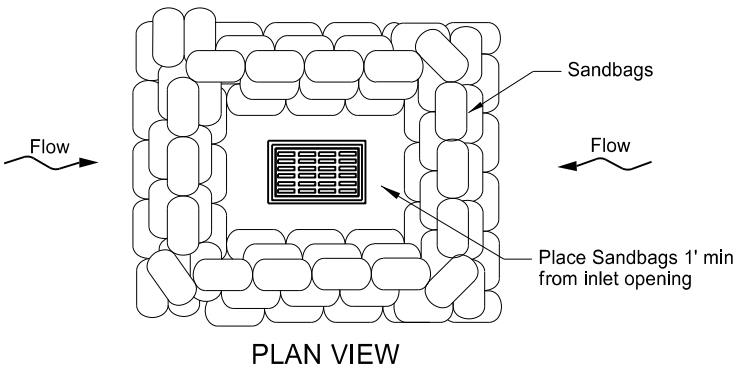
FIBER ROLL PROTECTION
(INLET OF CULVERT)



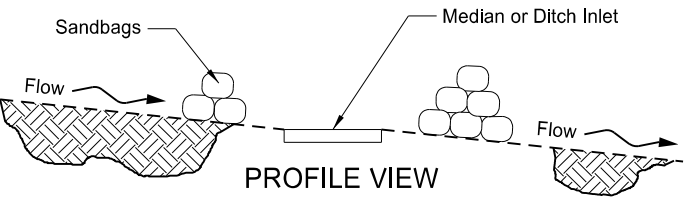
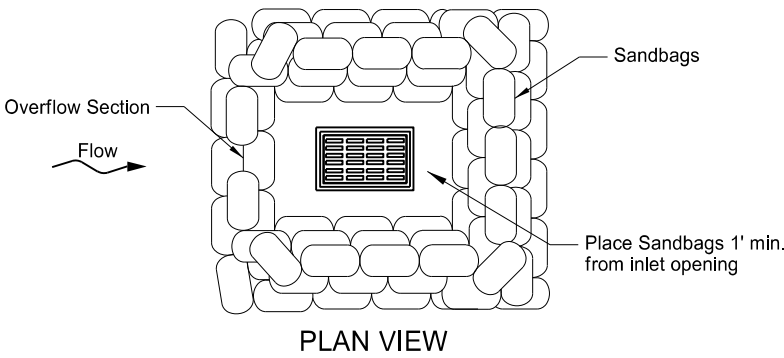
SILT FENCE PROTECTION
(MEDIAN OR DITCH INLET)



GRAVEL INLET PROTECTION
(MEDIAN OR DITCH INLET)



SANDBAG PROTECTION
(LOW POINT)

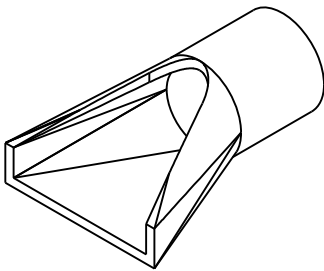


SANDBAG PROTECTION
(ON SLOPE)

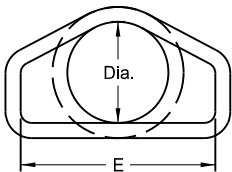
NORTH DAKOTA DEPARTMENT OF TRANSPORTATION	
10-03-13	
REVISIONS	
DATE	CHANGE
06-26-14	Updated reference to standard drawing number for fiber roll staking details.
10-01-14	Updated reference to standard drawing number for silt fence.
10-17-17	Updated to active voice.
08-27-19	New Design Engineer PE Stamp.

This document was originally issued and sealed by
Kirk J Hoff,
Registration Number
PE- 4683,
on 8-27-19 and the original document is stored at the
North Dakota Department
of Transportation

FLARED END SECTION						
TERMINAL DIMENSIONS						
DIA	A	B	C	D	E	U
12	0'-4"	2'-0"	4'-0 ⁷ / ₈ "	6'-0 ⁷ / ₈ "	2'-0"	2"
15	0'-6"	2'-3"	3'-10"	6'-1"	2'-6"	2 ¹ / ₄ "
18	0'-9"	2'-3"	3'-10"	6'-1"	3'-0"	2 ¹ / ₂ "
21	0'-9"	3'-0"	3'-1"	6'-1"	3'-6"	2 ³ / ₄ "
24	0'-9 ¹ / ₂ "	3'-7 ¹ / ₂ "	2'-6"	6'-1 ¹ / ₂ "	4'-0"	3"
27	0'-10 ¹ / ₂ "	4'-0"	2'-1 ¹ / ₂ "	6'-1 ¹ / ₂ "	4'-6"	3 ¹ / ₂ "
30	1'-0"	4'-6"	1'-7 ³ / ₄ "	6'-1 ³ / ₄ "	5'-0"	3 ¹ / ₂ "
36	1'-3"	5'-3"	2'-9"	8'-0"	6'-0"	4"
42	1'-9"	5'-3"	2'-9"	8'-0"	6'-6"	4 ¹ / ₂ "
48	2'-0"	6'-0"	2'-0"	8'-0"	7'-0"	5"
54	2'-3"	5'-5"	2'-9 ¹ / ₂ "	8'-2 ¹ / ₄ "	7'-6"	5 ¹ / ₂ "
60	2'-11"	5'-0"	3'-3"	8'-3"	8'-0"	5"
66	2'-6"	6'-0"	2'-3"	8'-3"	8'-6"	5 ¹ / ₂ "
72	3'-0"	6'-6"	1'-9"	8'-3"	9'-0"	6"
78	3'-0"	7'-6"	1'-9"	9'-3"	9'-6"	6 ¹ / ₂ "
84	3'-0"	7'-6 ¹ / ₂ "	1'-9"	9'-3 ¹ / ₂ "	10'-0"	6 ¹ / ₂ "
90	3'-5"	7'-3 ¹ / ₂ "	2'-0"	9'-3 ¹ / ₄ "	11'-0"	6 ¹ / ₂ "

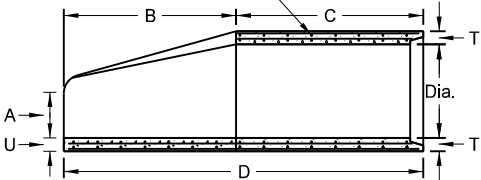


PERSPECTIVE

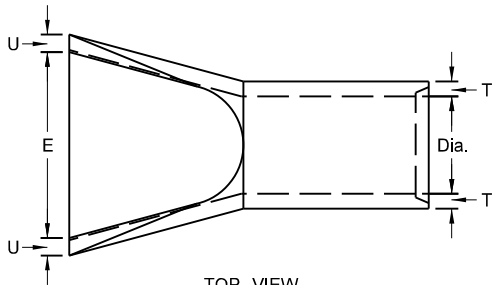


END VIEW

Standard Reinforcement for Class III pipe reinforced as per AASHTO M170



SIDE VIEW



TOP VIEW

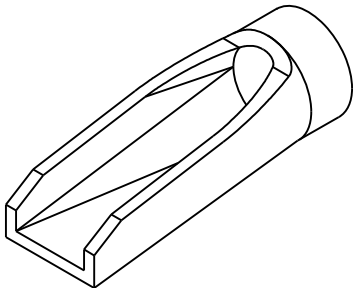
NOTES:

1. All reinforcing steel shall meet AASHTO M170 requirements.
2. All circular, longitudinal, and elliptical reinforcement shall be assembled and securely fastened in cage fashion so as to maintain reinforcement in exact shape and correct positions within the forms.
3. Laying length of pipe: 12" to 66" (incl.) = not less than 4 feet
66" to 108" (incl.) = not less than 6 feet
4. Joints shall be sealed with rubber gaskets or with sealer approved by the engineer whenever pipe are specified for storm drain or sanitary sewers.
5. For Class IV and Class V reinforced concrete pipe and end section sizes which do not have reinforcement specified by AASHTO M170, shop drawings and design calculations shall be prepared and sealed by a Professional Engineer and submitted for the Engineer's review.

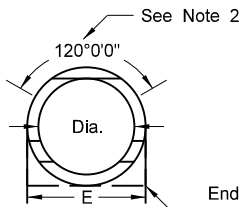
REINFORCED CONCRETE PIPE - FLARED END SECTION

Reinforcement to be equivalent to Class III RCP

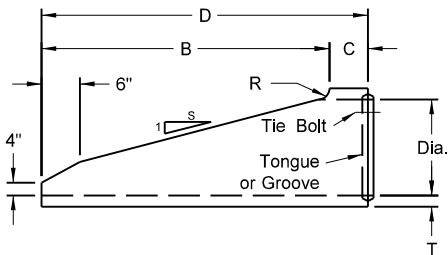
TRAVERSABLE END SECTION						
DIA	B	C	D	E	R	S
15"	4'	9"	4'-9"	1'-7 ¹ / ₂ "	3"	6
18"	5'-9"	9"	6'-6"	1'-11"	3"	6
24"	6'	1'	7'	2'-6"	3"	4
30"	7'-6"	1'	8'-6"	3'-1"	3 ¹ / ₂ "	4
36"	7'-3"	15"	8'-6"	3'-8"	3"	4



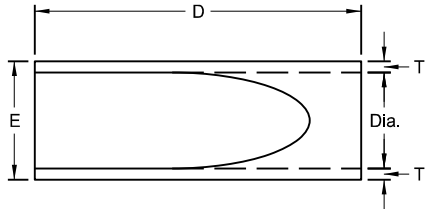
PERSPECTIVE



END VIEW



SIDE VIEW



TOP VIEW

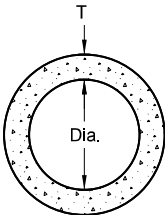
NOTES (Traversable End Section):

1. Manufactured in accordance with applicable portions of ASTM C76/AASHTO M170.
2. Reinforcement per Class III RCP with double reinforcement in the upper 120° of the full barrel portion.

REINFORCED CONCRETE PIPE - TRAVERSABLE END SECTION

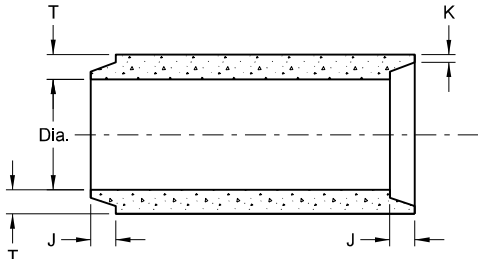
Reinforcement to be equivalent to Class III RCP

All Classifications of Round Concrete Pipe						
Internal Dia. of pipe in Inches	Cross-Sectional Water Area	Weight per Lin. Foot of pipe Std. Wall	Joint J Groove End Min./Max.	Joint K Tongue Min.	Minimum Wall Thickness (T)	
Dia	Sq. ft.	Lbs.	In.	In.	In.	
12	0.79	92	1 ⁵ / ₈ -2 ³ / ₈	³ / ₄	2	
15	1.23	127	1 ³ / ₄ -2 ¹ / ₄	⁷ / ₈	2 ¹ / ₄	
18	1.77	168	1 ¹ / ₂ -2 ¹ / ₂	1	2 ¹ / ₂	
21	2.40	214	1 ¹ / ₈ -3 ¹ / ₈	1 ¹ / ₈	2 ³ / ₄	
24	3.14	265	2 ³ / ₄ -3 ¹ / ₄	1 ¹ / ₈	3	
27	3.98	322	2 ¹ / ₄ -4	1 ¹ / ₄	3 ¹ / ₄	
30	4.91	384	3 ¹ / ₄ -4 ¹ / ₄	1 ¹ / ₄	3 ¹ / ₂	
33	5.94	452	3 ¹ / ₄ -4 ¹ / ₄	1 ¹ / ₂	3 ³ / ₄	
36	7.07	524	3 ¹ / ₄ -4 ¹ / ₄	1 ¹ / ₂	4	
42	9.62	685	3 ³ / ₄ -4 ³ / ₄	1 ³ / ₄	4 ¹ / ₂	
48	12.57	685	3 ³ / ₄ -4 ³ / ₄	1 ³ / ₄	5	
54	15.90	1070	4 ¹ / ₈ -5 ¹ / ₄	2	5 ¹ / ₂	
60	19.63	1296	4 ¹ / ₂ -5 ¹ / ₂	2 ¹ / ₄	6	
66	23.76	1542	5-6	2 ³ / ₈	6 ¹ / ₂	
72	28.27	1810	5 ⁵ / ₈ -6 ³ / ₄	2 ³ / ₈	7	
78	33.18	2098	6 ¹ / ₄ -7 ¹ / ₄	2 ³ / ₈	7 ¹ / ₂	
84	38.48	2410	5 ⁵ / ₈ -7 ³ / ₄	3 ³ / ₈	8	
90	44.18	2793	6 ³ / ₄ -8 ¹ / ₂	3 ³ / ₈	8 ¹ / ₂	
96	50.27	3092	7-8 ¹ / ₄	3 ¹ / ₂	9	
102	56.75	3466	7-8 ¹ / ₄	3 ¹ / ₂	9 ¹ / ₂	
108	63.62	3864	7 ¹ / ₄ -8 ¹ / ₂	3 ³ / ₄	10	

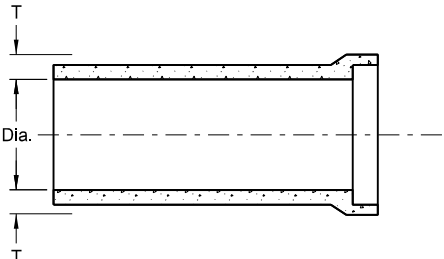


END VIEW

CIRCULAR PIPE

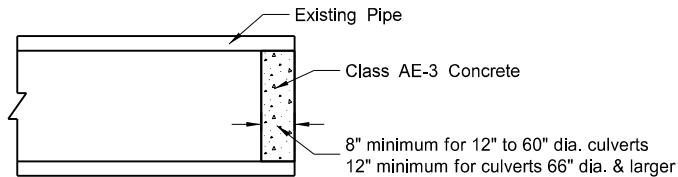


TONGUE & GROOVE JOINT



BELL & SPIGOT JOINT

JOINTS FOR REINFORCED CONCRETE PIPE



CONCRETE PIPE PLUG

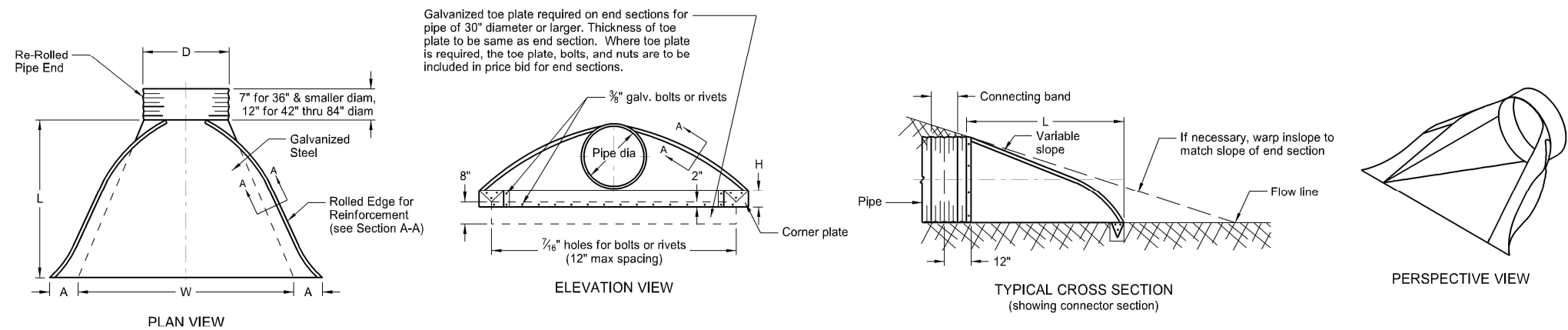
SEE STANDARD DRAWING D-714-22 FOR DETAILS OF CONCRETE PIPE TIES (TIE BOLTS).

NORTH DAKOTA DEPARTMENT OF TRANSPORTATION	
05-12-14	
REVISIONS	
DATE	CHANGE
01-21-15	Revised Note 5
11-21-16	Revised End Section Dimensions
09-18-19	Updated Perspective View Details

This document was originally issued and sealed by
Jon Ketterling
Registration Number
PE- 4684,
on 9/18/19 and the original document is stored at the
North Dakota Department
of Transportation

ROUND CORRUGATED STEEL PIPE CULVERTS AND END SECTIONS

D-714-4



PIPE DIA.	GALVANIZED THICKNESS	END SECTION DIMENSIONS						APPROX. SLOPE RATE	BODY
		A	B	H	L	W			
15	0.064 - 0.079	7	8	6	26	30		2 1/2:1	1
18	0.064 - 0.109	8	10	6	31	36		2 1/2:1	1
24	0.064 - 0.109	10	13	6	41	48		2 1/2:1	1
30	0.064 - 0.109	12	16	8	51	60		2 1/2:1	1 or 2
36	0.064 - 0.109	14	19	9	60	72		2 1/2:1	2
42	0.064 - 0.138	16	22	11	69	84		2 1/2:1	2
48	0.064 - 0.168	18	27	12	78	90		2 1/2:1	2
54	0.064 - 0.168	18	30	12	84	102		2:1	2
* 60	0.064 - 0.168	18	33	12	87	114		1 1/2:1	3
* 66	0.064 - 0.168	18	36	12	87	120		1 1/2:1	3
* 72	0.064 - 0.168	18	39	12	87	126		1 1/2:1	3
* 78	0.064 - 0.168	18	42	12	87	132		1 1/2:1	3
* 84	0.064 - 0.168	18	45	12	87	138		1 1/2:1	3

* These sizes have 0.109" sides and 0.138" center panels.

** Pipe diameter is equal to dimension "D" of end section.

Manufacturers tolerances of above dimensions will be allowed.

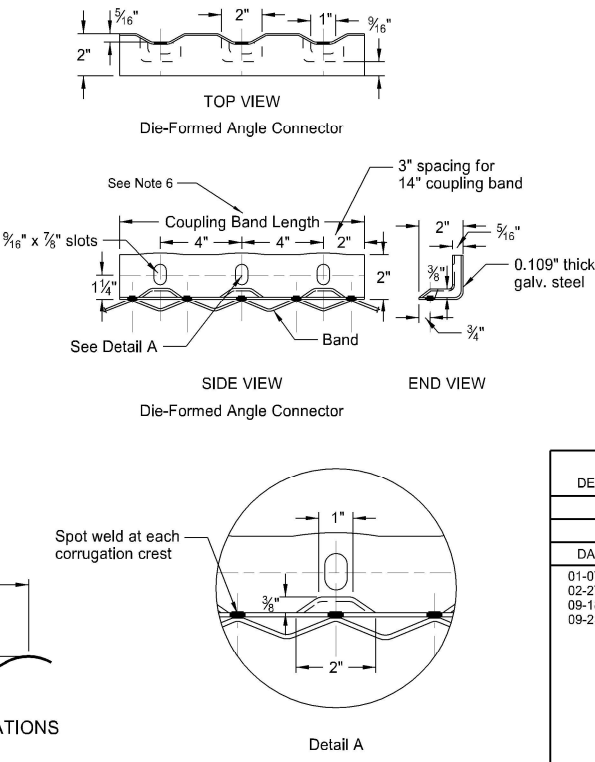
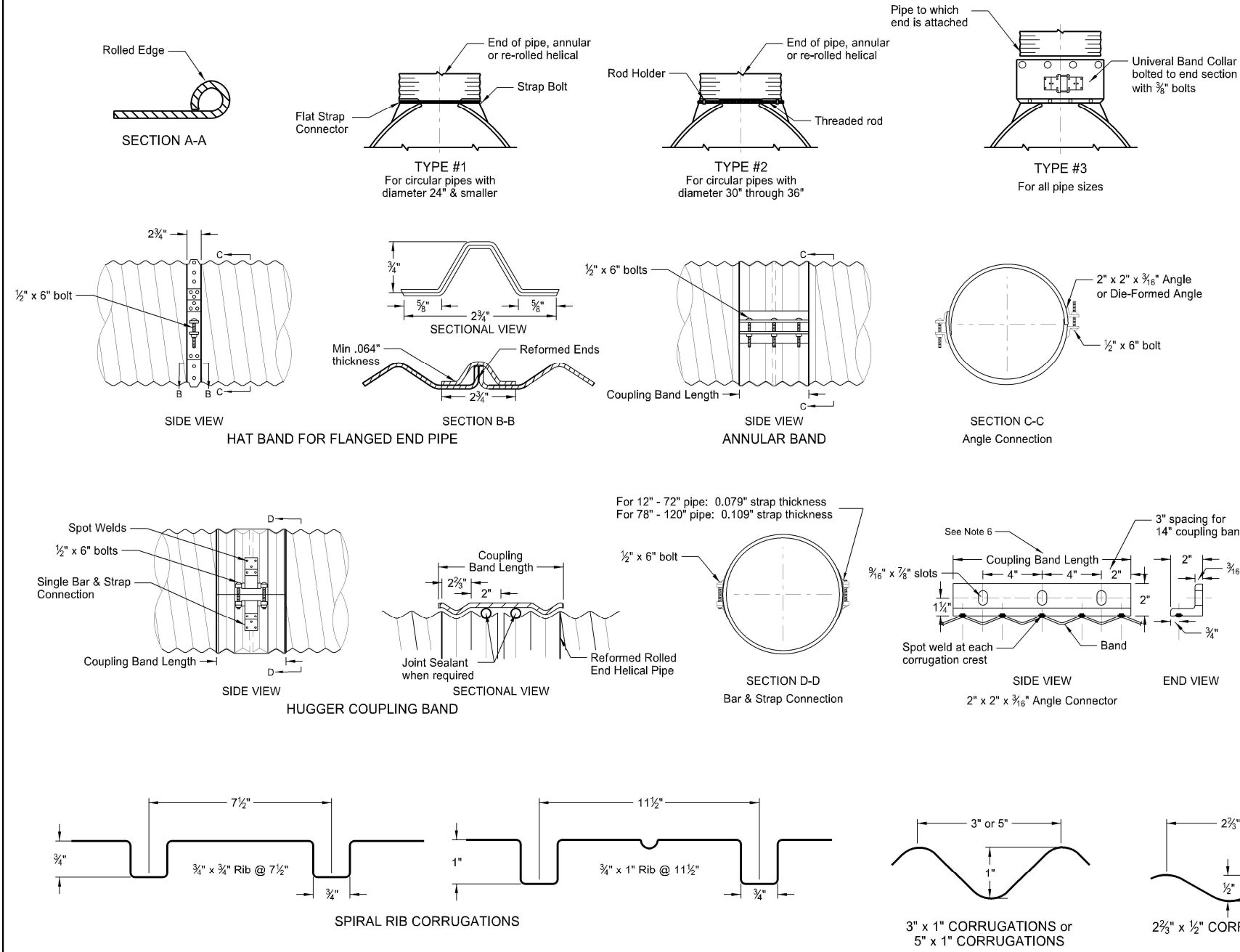
Splices to be the lap riveted type.

Multiple panel bodies shall have lap seams which are to be tightly joined with 3/8" dia. galv. bolts or rivets. Nuts to be torqued to 25 foot-lbs ±.

NOTES:

- Pipes and connecting bands shall conform to applicable sections of NDDOT Standard Specifications and to AASHTO M-36.
- Top edge of all end sections to have rolled edges for reinforcement (see Section A-A). The reinforced edges are to be supplemented with 2" x 2" x 1/4" galv. angle for 60" through 72" dia. and 2 1/2" x 2 1/2" x 1/4" galv. angle for 78" and 84" dia.. Angles to be attached by galv. 3/8" dia. bolts and nuts. Angles are to extend from pipe to the corner wing bend.
- Elongated pipes shall be factory preformed so that the vertical diameter shall be 5% greater and the horizontal diameter 5% less than a circular pipe.
- Coupling bands shall be two-piece for pipes larger than 36" as shown in Section C-C & D-D details. For pipes 36" and smaller, a one-piece band is acceptable.
- 1/2" x 8" bolts may be used as a substitute for the 1/2" x 6" bolts shown in the details.
- Coupling bands wider than 14" may be used if a minimum of four 1/2" bolts with maximum spacing of 5 1/2" are used for the connection.
- Length of spot welds shall be minimum 1/2".

COUPLING BAND DIMENSIONS				
COUPLING TYPE	CORRUGATION PITCH x DEPTH	PIPE SIZE	COUPLING BAND LENGTH	MIN. BAND THICKNESS
Hat Band	2 3/8" x 1/2"	12" - 48"	2 3/4"	.064"
Annular Band	2 3/8" x 1/2"	12" - 72"	12"	.052"
		78" - 84"	12"	.079"
Hugger Band	2 3/8" x 1/2" Rerolled End	12" - 72"	10 1/2"	.052"
		78" - 84"	10 1/2"	.079"
	3" x 1" Rerolled End	48" - 120"	10 1/2"	.052"
		48" - 120"	12"	.064"

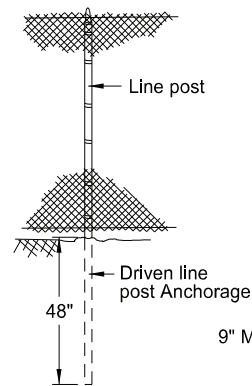


NORTH DAKOTA DEPARTMENT OF TRANSPORTATION	
08-16-13	
REVISIONS	
DATE	CHANGE
01-07-14	End Section Plan View
02-27-14	3" x 1" Corrugation Detail
09-18-19	Added Perspective View Detail
09-23-22	Galvanized Thickness Table

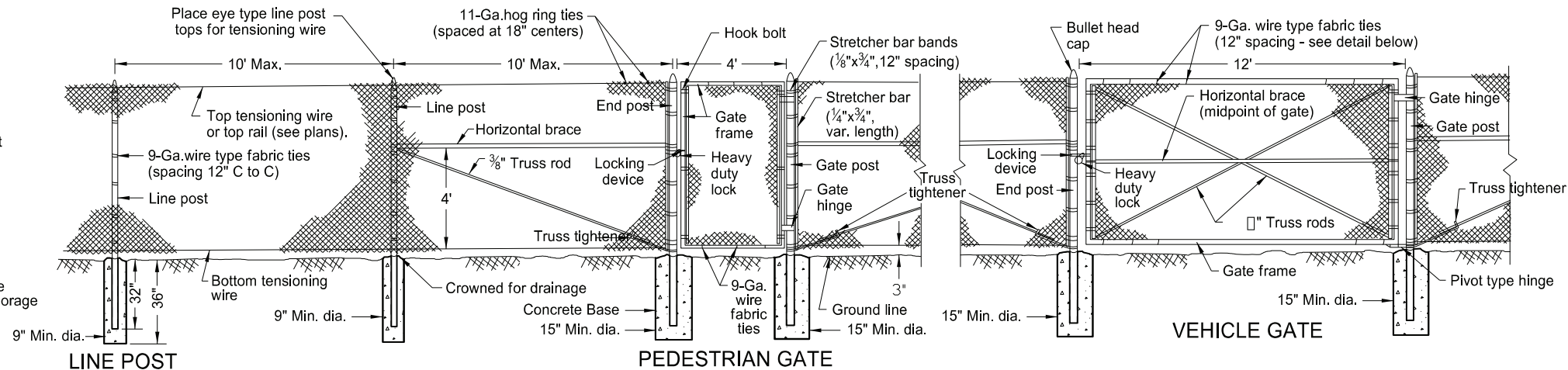
Professional Engineer Seal for Nathan D Kettering, PE-4684, State of North Dakota. The seal is circular with the text "NORTH DAKOTA" and "ENGINEER" around the perimeter. The name "NATHAN D KETTERING" and "PE-4684" are in the center. The date "09/23/22" is at the bottom.

CHAIN LINK FENCE

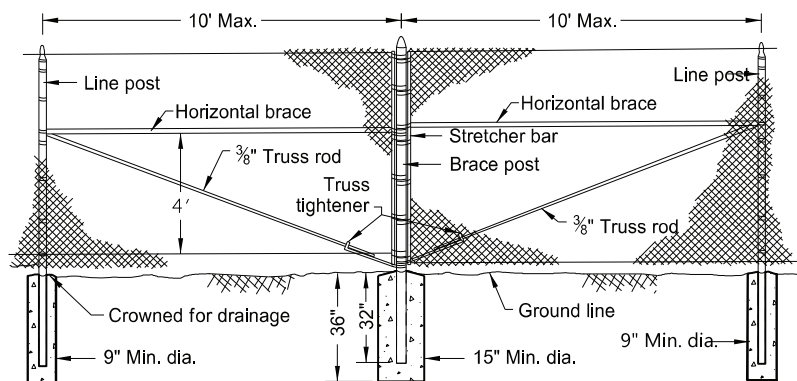
ALTERNATE
LINE POST
ANCHORAGE



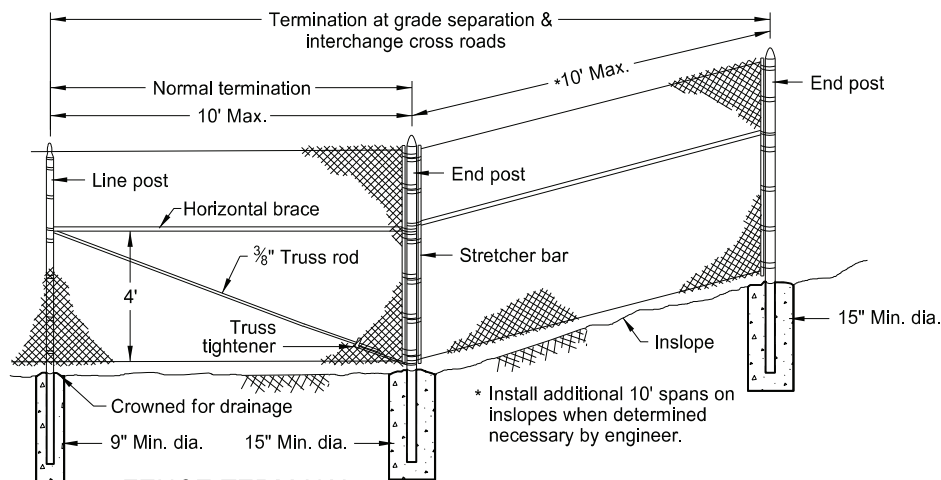
LINE POST



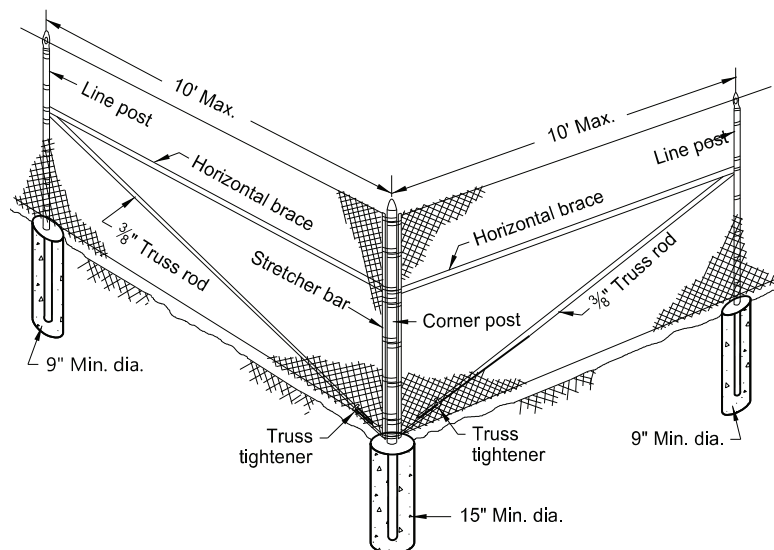
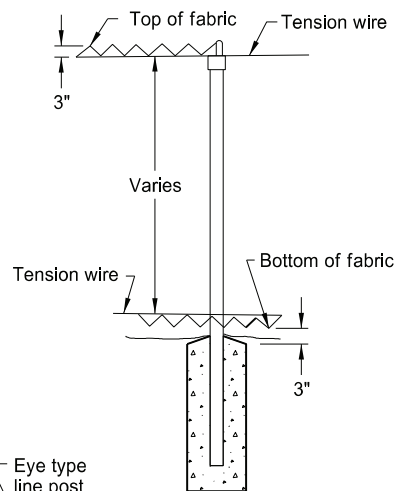
VEHICLE GATE



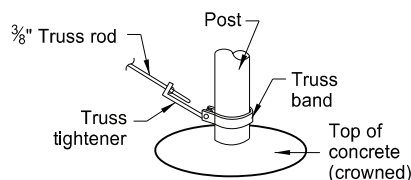
DOUBLE BRACE ASSEMBLY



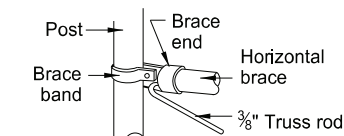
FENCE TERMINAL



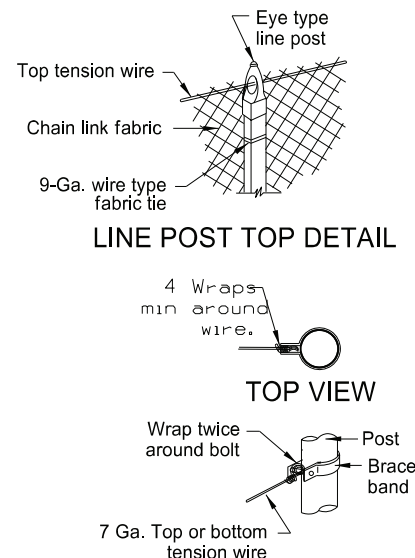
CORNER ASSEMBLY



TRUSS ATTACHMENT AT TERMINAL POSTS



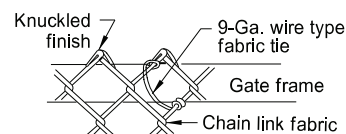
BRACE & TRUSS ATTACHMENT



LINE POST TOP DETAIL

TOP VIEW

TENSION WIRE ANCHORAGE

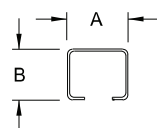


WIRE TYPE FABRIC TIE DETAIL

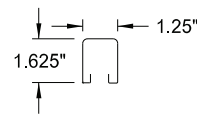


STRETCHER
BAR BAND

EQUIVALENT POST SIZES AND WEIGHTS																
USE OF POST	FABRIC HEIGHT	ROUND STEEL			ROLL FORMED			"H" COLUMN STEEL								
		Size	Weight - Lbs./Ft.		Size		Weight	Size		Weight						
		Out. Dia.	Grade 1	Grade 2	A	B	Lbs./Ft.	A	B	Lbs./Ft.						
LINE POST	6' or less	1.900"	2.72	2.28	1.875"	1.625"	2.40	2.25"	1.70"	3.26						
	Over 6'	2.375"	3.65	3.12	2.25"	1.70"	2.78	2.25"	1.70"	3.26						
END or CORNER	6' or less	2.375"	3.65	3.12	ROLL FORMED STEEL POSTS NOT PERMITTED			"H" COLUMN STEEL POSTS NOT PERMITTED								
	Over 6'	2.875"	5.79	4.64												
BRACE POST	6' or less	2.375"	3.65	3.12												
	Over 6'	2.875"	5.79	4.64												
GATE POST	6' or less	3.500"	7.58	5.71												
	Over 6'	4.000"	9.11	6.56												
EXTERIOR FRAME FOR GATE	Gate width 6' or less	1.660"	2.27	1.84												
	Gate width over 6'	1.900"	2.72	2.28												
HORIZONTAL BRACE	All	1.660"	2.27	1.84							1.625" x 1.25"		1.35			

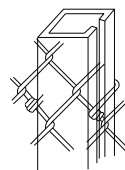


LINE
POST

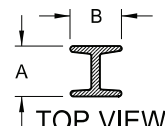


TOP &
BRACE RAIL

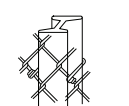
ROLL FORMED POST



ROLL FORMED POST



↑ TOP VIEW



"H" COLUMN POST

NORTH DAKOTA	
DEPARTMENT OF TRANSPORTATION	
8-5-09	
REVISIONS	
DATE	CHANGE
9-28-10	Revised Equivalent Post Sizes and Weights, details, & notes.
10-17-17	Updated to active voice.
8-07-23	Update Design Engr PE Stamp.

