

November 4, 2020

ADDENDUM 1 – JOB 4

TO: All prospective bidders on Projects TAU-0008(034), Job No. 4 scheduled for the November 13, 2020 bid opening.

The following plans revisions shall be made:

Plan Revisions:

See attached summaries from Paul Benning, P.E. dated November 4, 2020 for an explanation.

This addendum is to be incorporated into the bidder's proposal for this project.



PHILLIP MURDOFF, P.E. – CONSTRUCTION SERVICES ENGINEER

80: dch

Enclosure

PLAN ADDENDUM SUMMARY AND APPROVAL

| PROJECT INFORMATION | | |
|--------------------------|-----------------|--|
| Project: | TAU-0008(034) | PCN: 22572 |
| Location: | Burleigh County | |
| Date: | 11/04/2020 | Lead Designer: Short Elliott Hendrickson Inc. |
| Bid Opening Date: | 11/13/2020 | JOB#: 4 Addendum#: 1 |

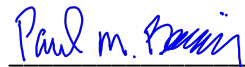
| PLAN SHEET CHANGES | | |
|--------------------|-------|---|
| Section | Sheet | Description |
| 2 | 1 | Added Standard Drawing D-750-1 |
| 6 | 1 | Added plan note 750-P02 for reinforcement of concrete driveways |
| | | |
| | | |

| CHANGES MADE TO BID ITEMS FOR JOB | | | | | |
|-----------------------------------|------|-------------|------|-------------------|------------------|
| Spec | Code | Description | Unit | Previous Quantity | Revised Quantity |
| | | | | | |
| | | | | | |
| | | | | | |
| | | | | | |
| | | | | | |
| | | | | | |
| | | | | | |

APPROVAL

Should the revisions described above be processed as a plan addendum?

 X Yes No



Paul Benning, P.E. – Local Government Engineer

11/4/2020

Date


X:\KOLLL\IND\154870\5-final-dgn\151-drawings\10-Civil\cad\dwg\sheet154870TC.dwg 11/4/2020 8:42 AM mbonanno

TABLE OF CONTENTS

| | | | | |
|-----|-------|---------------|-------------|-----------|
| Rev | STATE | PROJECT NO. | SECTION NO. | SHEET NO. |
| | ND | TAU-0008(034) | 2 | 1 |

| PLAN SECTIONS | | | | LIST OF STANDARD DRAWINGS | |
|---------------|----------|--|------------------|---|--|
| Sections | Sheet(s) | Description | Number | Description | |
| 1 | 1 | Title Sheet | D-101-1, 2, 3 | NDDOT Abbreviations | |
| 2 | 1 | Table of Contents, List of Standard Drawings | D-101-10 | NDDOT Utility Company Abbreviations | |
| 2 | 2 | Legend | D-101-20, 21 | Linestyles | |
| 4 | 1 | Scope of Work | D-101-30, 31, 32 | Symbols | |
| 6 | 1 | Construction Notes | D-255-2 | Erosion and Siltation Control Erosion Control Blanket Installation | |
| 8 | 1 | Estimated Quantities, Basis of Estimate | D-260-1 | Erosion and Siltation Controls - Silt Fence | |
| 20 | 1 | Details | D-261-1 | Erosion Control Fiber Roll Placement Details | |
| 60 | 1-9 | Sidewalk Plan & Profiles | D-704-7 | Breakaway Systems For Construction Zone Signs - Perforated Tube | |
| 76 | 1-2 | Temporary Erosion Control | D-704-8 | Breakaway Systems For Construction Zone Signs - U-Channel Post | |
| 77 | 1-4 | Permanent Erosion Control | D-704-9, 10, 11 | Construction Sign Details | |
| 100 | 1-4 | Work Zone Traffic Control | D-704-13 | Barricade and Channelizing Device Details | |
| 110 | 1-3 | Permanent Signing | D-704-14 | Construction Sign Punching and Mounting Details | |
| 120 | 1 | Permanent Pavement Markings | D-704-24 | Shoulder Closures and Bridge Painting Layouts | |
| 140 | 1-2 | Lighting | D-704-50 | Portable Sign Support Assembly | |
| 200 | 1-5 | Cross Sections | D-748-1 | Curb & Gutter and Valley Gutter | |
| | | | D-750-1 | Concrete Driveway - Urban | |
| | | | D-750-2 | Sidewalk | |
| | | | D-750-3 | Curb Ramp Details | |
| | | | D-754-23 | Perforated Tube Assembly Details | |
| | | | D-754-24, 25 | Mounting Details Perforated Tube | |
| | | | D-754-24A | Breakaway Coupler System for Perforated Tubes | |
| | | | D-754-27, 28 | Sing Punching, Stringer, and Support Location Details Regulatory, Warning and Guide Signs | |
| | | | D-762-1 | Pavement Marking Message Details | |

This document was originally issued and sealed by MATTHEW R SCHAIBLE PE 10939 on 11/4/2020 and the original document is stored at SEH

| TABLE OF CONTENTS, LIST OF STANDARD DRAWINGS | | | |
|--|----------------|----------|--|
|  <div>PHONE: 701.354.7121 4719 SHELBURNE STREET, SUITE 6 BISMARCK, ND 58503-5677 www.sehinc.com</div> | SEH Project #: | Date: | |
| | 154870 | 4/4/2020 | |
| Drawn By: | Checked By: | | |
| NMB | MRS | | |

X:\KOLLE\IND\15487015-final-dgn\15-drawings\10-Civil\cardwg\sheet154870CN.dwg 11/4/2020 8:45 AM rbonanno

NOTES

- 105-110

PAVEMENT SWEEPING: Sweep paved areas that were used by construction equipment or material storage prior to opening to traffic. Contractor has option to coordinate with Lincoln Public Works for utilization of vacuum or pickup type sweeper at Contractor's expense.
- 105-P01

UTILITIES: All utilities shown are for reference only. Not all utility locates were answered. It is the Contractor's responsibility to comply with specifications and locates for all utilities prior to start of work.
- 105-P02

EXISTING UTILITY LOCATIONS: Contractor shall contact all residents living adjacent to the construction of new sidewalk and inquire about existence of private utilities in the construction area. All private utilities, if disturbed, shall be restored to preconstruction condition at the Contractor's expense.
- 105-P03

RIGHT OF WAY: Contractor shall protect all survey land monuments and be responsible for all costs associated with resetting any disturbed monuments.
- 107-P01

HAUL ROAD RESTRICTIONS: Lincoln Road and 66th St SE are designated haul routes within the City of Lincoln. Before submitting a proposal, contact appropriate State, County, Township, or City officials to determine if there are any roadways that will be designated as "no haul" routes.
- 202-132

REMOVAL OF BITUMINOUS SURFACING: Include all costs for removing existing asphalt pavement full-depth in Removal of Bituminous Surfacing.
- 202-P01

ABUTTING PAVEMENT: Where new pavement will abut existing pavements, a full depth vertical saw cut shall be made along the entire length of the butt joint. Material shall be removed without damage to existing material to remain. Place all new pavement to match existing pavement for a continuous surface profile. Any damage to existing material to remain in place shall be restored to preconstruction condition at Contractor's expense. Include all labor, material, and equipment required for saw cutting in the unit bid price for "Sidewalk Concrete 4IN".
- 203-010

SHRINKAGE: 30 percent additional volume is included for shrinkage in earth embankment.
- 203-P01

TOPSOIL: Strip topsoil to a maximum depth of 8 inches. Do not perform any earthwork operations outside of ROW without obtaining landowners permission first. Stockpile topsoil outside of grading limits. Do not stockpile outside of right-of-way without obtaining landowner's permission and complying with all siting laws and permits. Do not stockpile on residential lawn areas within right-of-way. Spread topsoil evenly over finished grade between grading limits and edge of pavement. Spread all excess topsoil within 66th St. SE sidewalk grading limits.
- 203-P02

BORROW - EXCAVATION: Compaction Control for all borrow shall by Type C per Section 203.04 of the Standard Specifications. Include cost for work associated with excavation and placement as compaction control Type C under "Borrow - Excavation".
- 216-P01

WATER: The cost for water for all borrow compaction and dust control shall be included in the bid price for "Borrow - Excavation".
- 253-P01

SEEDING AND HYDRAULIC MULCH: All seeding shall be paid between planned disturbance limits shown in plans. All disturbance outside of these limits shall be seeded with either Class I or Class II seeding matching adjacent specified seeding in plans. Class I seeding has been planned at 2' wide from each edge of sidewalk along all residential lawns. All seeding is to be Hydraulic Mulched as specified in NDDOT Section 253. An additional 0.050 acres of Seeding CL II and Hydraulic Mulch have been included in associated bid items for miscellaneous construction and Rapid Flashing Beacon utility installation. All seeding outside of planned disturbance limits shall be completed at the Contractor's expense. Hydraulic Mulch and Seeding shall be paid at plan quantity.
- 302-P01

AGGREGATE BASE COURSE: Bid item shall be paid as plan quantity unless changes are made by the Engineer.

- 430-P01

PATCHING: Along 66th Street SE sidewalk installation, between STA 2+43 - STA 2+68 right-of-way boundary to 20 LF LT full width. Replace asphalt approach after installation of new sidewalk concrete matching asphalt patch to new sidewalk elevation. All grading, material, labor, equipment and incidentals shall be included in bid price for "PATCHING".
- 704-P01

TUBULAR MARKERS: Contractor shall follow Tubular Marker layout as shown on Sheet 100-3 for work done adjacent to the 66th St SE roundabout. Additional Tubular Markers were included to be used at the Contractor's discretion for work along Dolan Drive.
- 704-P02

TRAFFIC CONTROL DEVICES: Provided traffic control devices are suitable for 2 active work areas. Contractor is responsible for maintenance of traffic control devices within each work area. Provide additional devices at no additional cost to the project.

1. Standard Detail D-704-24, layout U. Existing speed limit is 35 mph, reduced speed signs will not be required.
- 750-P01

SIDEWALK CONCRETE 4IN: All excavation to construct the sidewalk to grade established by plans shall be included in the Contractor's bid price for "Sidewalk Concrete 4IN". All existing curb stops or gate valves within the new sidewalk concrete limits shall be set flush with the top of new sidewalk. All costs associated with adjusting and setting curb stops or gate valves shall be included in the price bid of "Sidewalk Concrete 4IN".
- 750 - P02

DRIVEWAY CONCRETE 6IN: Reinforce driveways with a No. 4 deformed reinforcing bar placed 24 inches on center both transversely and longitudinally. Include an 18-inch minimum overlap at splice locations. Use chairs to support the bars at mid-depth of the slab and ensure a clearance of 3 inches to all side forms. Tie all cold joints with a 12-inch-long No. 4 deformed reinforcing bar placed 24 inches on center. All driveways to be tied to curb and gutter or sidewalk by use of No. 4 x 12" dowel bars placed mid-depth at 24" on center. Saw all longitudinal and transverse joints. Include all costs for the labor, equipment, and material necessary to construct the reinforced driveways in the price bid for "Driveway Concrete 6IN Reinforced".
- 762-050

PAVEMENT MARKING: If the Engineer and Contractor agree, plan quantity will be used as the measurement for payment of pavement marking items.

SEH

PHONE: 701.354.7121
4719 SHELBURNE STREET,
SUITE 6
BISMARCK, ND 58503-5677
www.sehinc.com

SEH Project #:
154870

Drawn By:
NMB

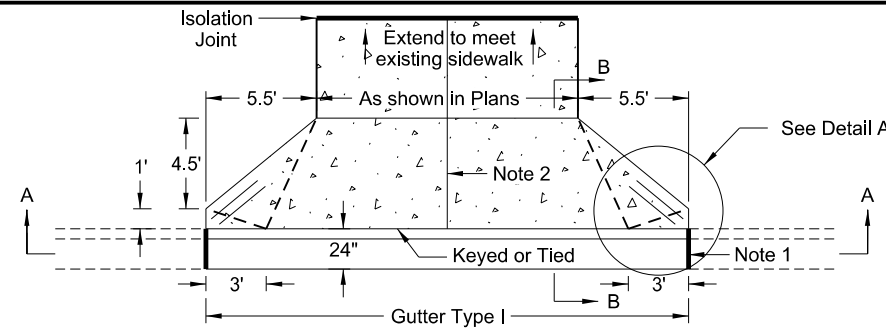
Date:
4/4/2020

Checked By:
MRS

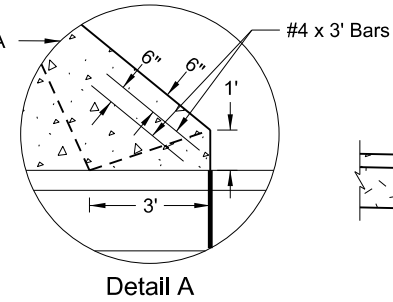
This document was originally issued and sealed by MATTHEW R SCHAIBLE PE 10939 on 11/4/2020 and the original document is stored at SEH

GENERAL NOTES

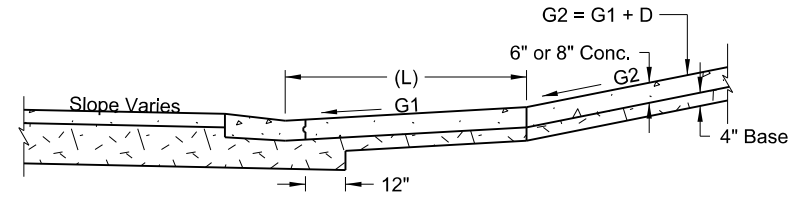
CONCRETE DRIVEWAY - URBAN



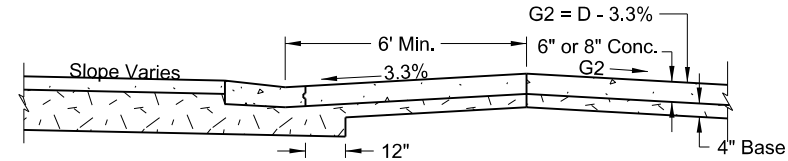
Driveway Type 1



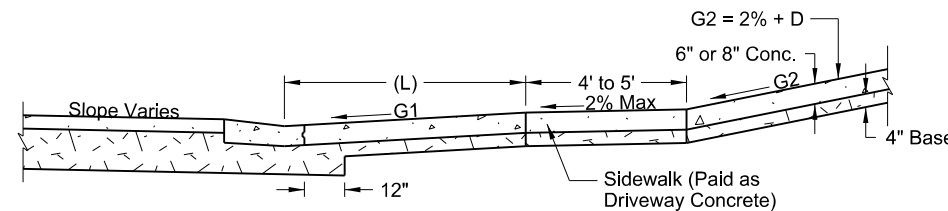
Detail A



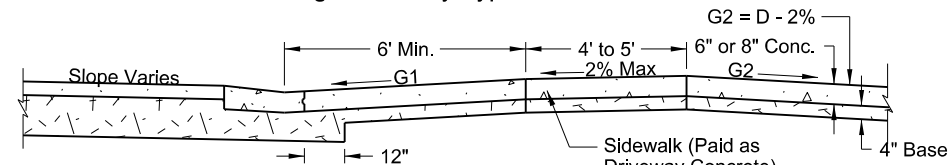
Sag - Driveway Type 1



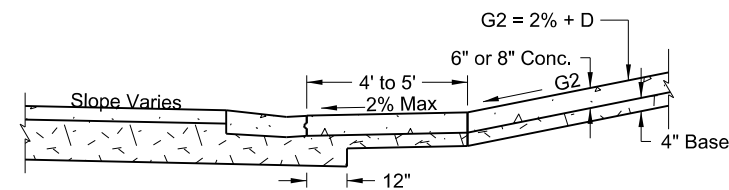
Summit - Driveway Type 1



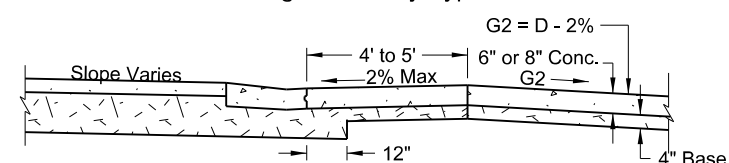
Sag - Driveway Types 2A & 2B



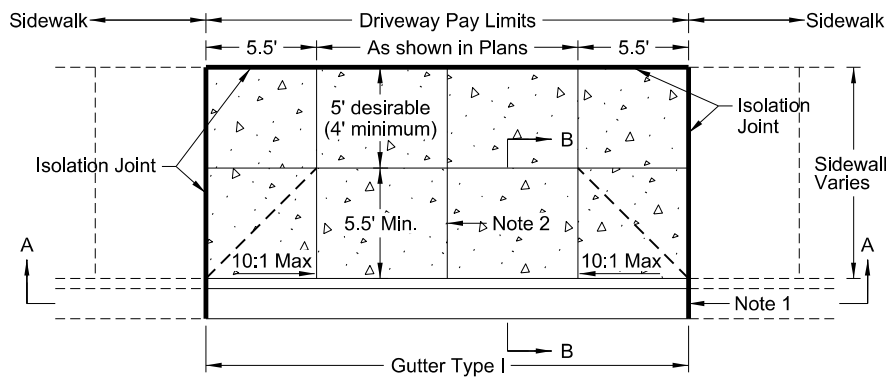
Summit - Driveway Types 2A & 2B



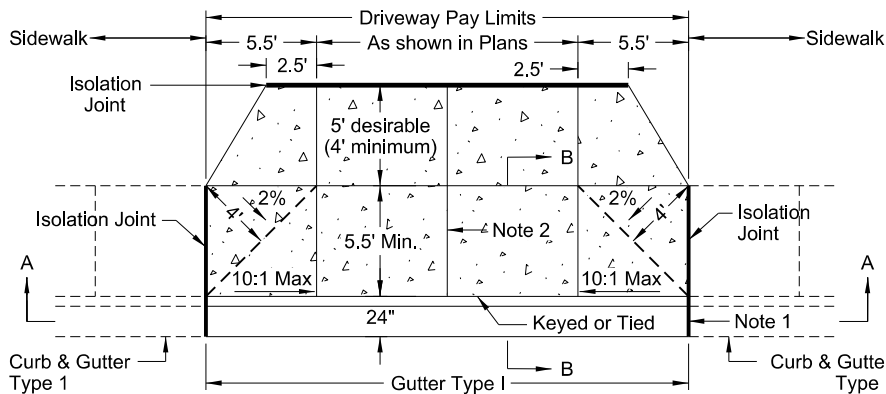
Sag - Driveway Type 3



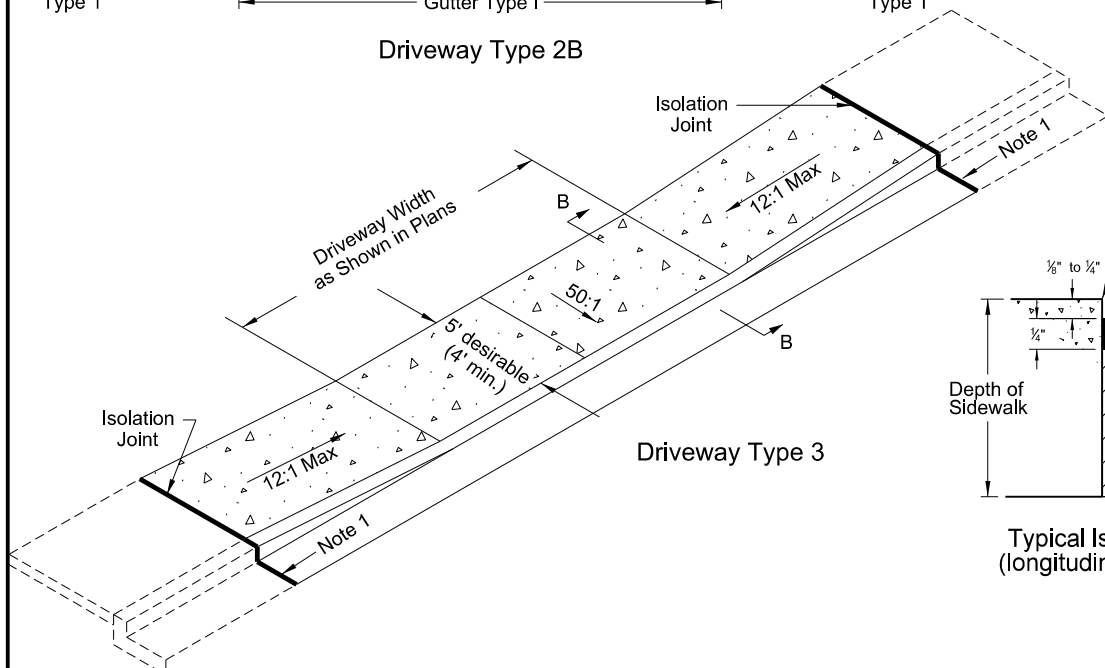
Summit - Driveway Type 3



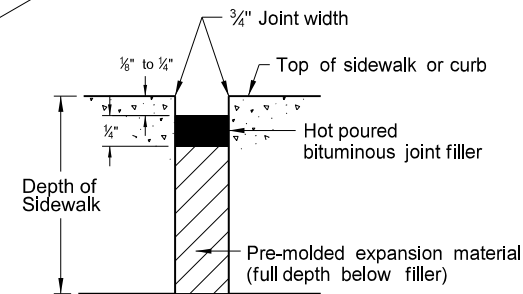
Driveway Type 2A



Driveway Type 2B



Driveway Type 3



Typical Isolation Joint Seal
(longitudinal and transverse)

NOTES:

1. See Standard D-748-1 for curb and gutter isolation joint detail. On PCC roadways, match curb and gutter joints with pavement joints, as much as practical.
2. Joint Spacing: Use 1 center contraction joint on driveways 20' width or less, 2 center contraction joints for driveways 20' to 30' width, and 3 center contraction joints for driveways greater than 30' width.

Saw or groove contraction joints a minimum depth of 1/3 the depth of the concrete.

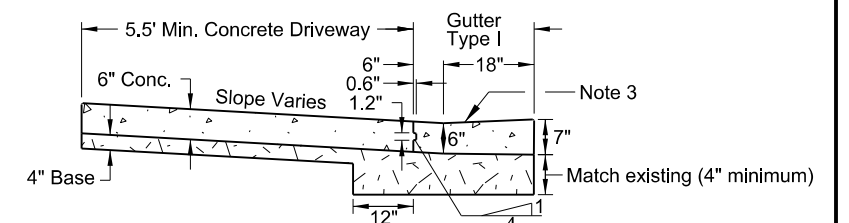
Use isolation joints between separately poured concretes, or between old and new concrete.

Seal joints with hot pour bituminous filler or low modulus silicone. Install and tool sealant according to manufacturer's recommendations.

Include all costs for labor, equipment, and material to construct and seal joints in the price bid for the driveway.
3. Include all costs for gutter-Type 1 in the unit price bid for "Curb and Gutter-Type 1".
4. Use 6" driveway unless otherwise specified.
5. Place 4" base material under concrete driveway. Include all costs for labor and materials necessary to place the base material in the price bid for Salvage Base Course or Aggregate Base Course CL 5.
6. Construct sidewalk behind a driveway to the same thickness as the driveway. The Engineer will measure it as driveway concrete.

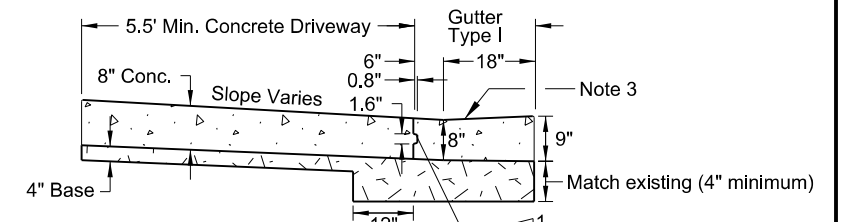


Section A-A



6" Section B-B

4
Keyed Construction Joint or
Tied Joint (#3 x 1'-6" Bars) 4' on center



8" Section B-B

4
Keyed Construction Joint or
Tied Joint (#3 x 1'-6" Bars) 4' on center

| Driveway ADT | Grade G1 | | Dimension (L) ft. | | Grade Changes (D) | |
|-----------------|-----------|---|-------------------|---------|-------------------|---|
| | Desirable | Maximum | Desirable | Maximum | Desirable | Maximum |
| (0-500) | 5% | 12% or controlled by vehicle clearance | 12 | 6 | 6% | 15% or controlled by vehicle clearance |
| (500-1500) | 3% | 8% | 20 | 20 | 3% | 6% |
| (> 1500) | 2% | 5% | 40 | 40 | 0% | 3% |

| | |
|------------------------------|--|
| NORTH DAKOTA | |
| DEPARTMENT OF TRANSPORTATION | |
| 2-13-2014 | |
| REVISIONS | |
| DATE | CHANGE |
| 10-17-17 08-27-19 | Updated to active voice. New Design Engineer PE Stamp |

This document was originally issued and sealed by
Kirk J Hoff,
Registration Number
PE-4683,
on 08/27/19 and the original document is stored at the
North Dakota Department
of Transportation