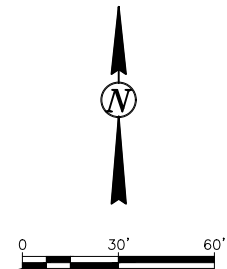


08/15/18 06:03:18AM H:\Fargo\IBN\6000\6059\18_6059_145 - 52nd Ave. Design\CAD\Plans\090--PAVEMENT JOINTING LAYOUT.dwg

	STATE	PROJECT NO.	SECTION NO.	SHEET NO.
	ND	SU-8-984(164)	90	1



- #4 DEFORMED TIE BAR
- ===== DOWELED JOINT
- R REINFORCED PANELS
- IMPRESSED CONCRETE
- 5" SIDEWALK
- 6" SIDEWALK
- MEDIAN NOSE
- 10" ASPHALT PAVEMENT

- NOTE:**
1. ALL CONCRETE PAVEMENT JOINTS ADJACENT TO EXISTING CONCRETE SHALL MATCH THE EXISTING JOINT PATTERN.
 2. ALL CONCRETE PAVEMENT SHALL BE DOWELED WITH REINFORCED PANELS AT UTILITY CROSSINGS. REINFORCED PANELS SHALL NOT BE PAID FOR SEPARATELY BUT INCLUDED IN THE PRICE BID FOR 10" NON-REINF. CONC. PVMT CL AE-DOWELED.
 3. ALL MANHOLE CASTINGS WITHIN THE CONCRETE PAVEMENT SHALL BE FLOATING CASTING R-1955-1. ALL COSTS FOR THE FLOATING CASTING SHALL BE INCLUDED IN THE PRICE OF EACH STRUCTURE.
 4. POUR CURB & GUTTER SEPARATE FROM ADJACENT CONCRETE PAVEMENT.
 5. INSTALL MH CASTINGS WITH PAVING OPERATION OR INSTALL WITH EACH ADJOINING FULL CONCRETE PANEL. MH ISOLATION OR BOX OUTS WILL NOT BE ALLOWED.



Proj. No. 6059-0145
Houston
Engineering Inc.
Ph: 701.237.5065

ALL ELEVATIONS ARE BASED ON
THE U.S.G.S. VERTICAL DATUM OF 1988.
(UNLESS NOTED OTHERWISE)

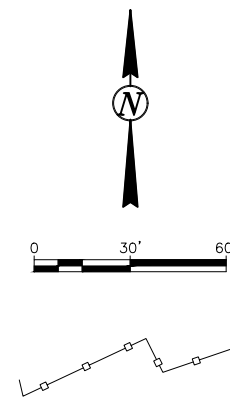
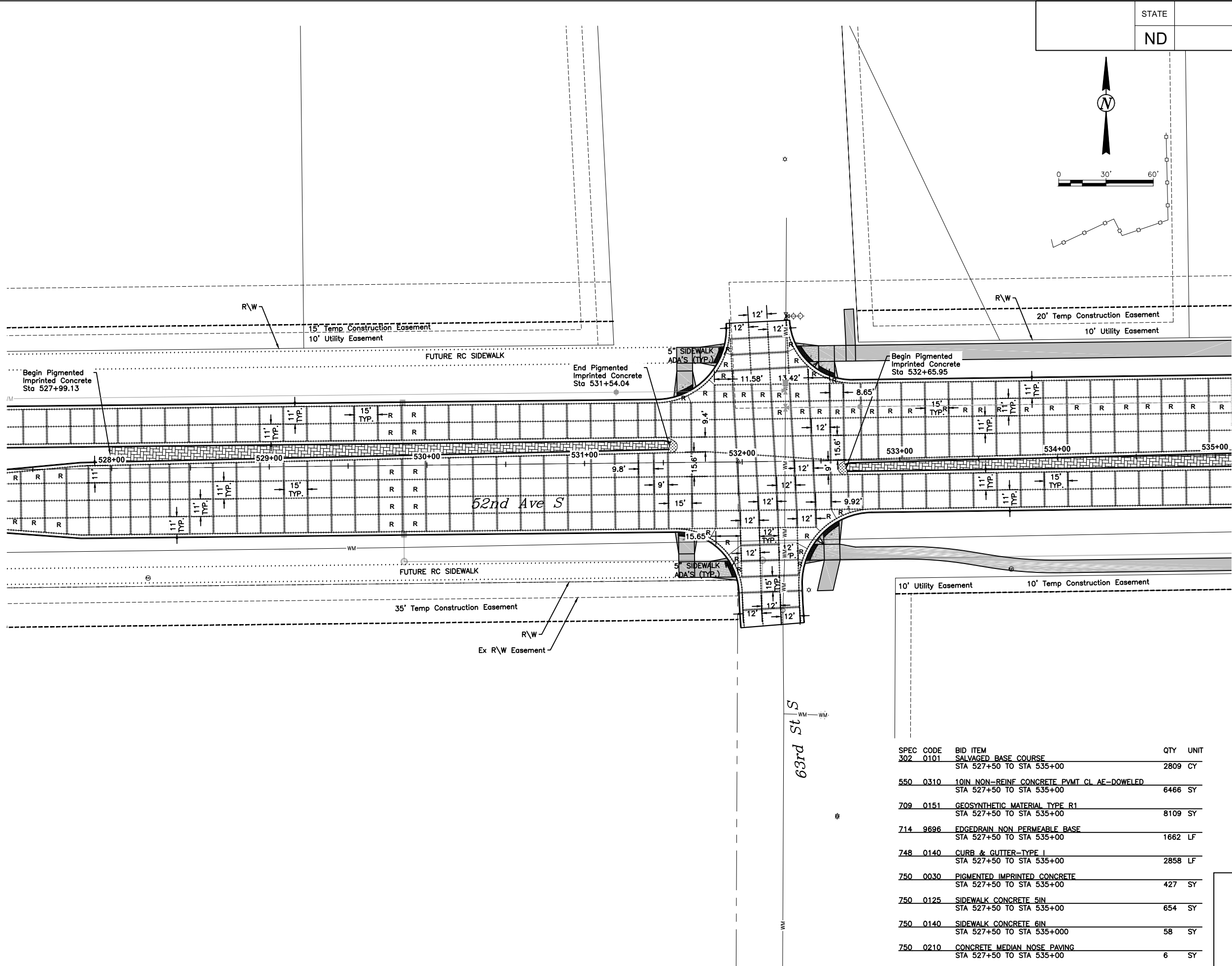
This document was originally issued and sealed by
Adam M. Ruud
Registration Number 10407
on 8/15/18 and the original document is stored in the Engineering Dept. at City Hall.

Paving Layouts

52nd Ave S - West of 63rd St S to 45th St S

SPEC CODE	BID ITEM	QTY	UNIT
302 0101	SALVAGED BASE COURSE STA 521+22 TO STA 527+50	1420	CY
401 0050	TACK COAT STA 521+22 TO STA 526+17	172	GAL
401 0060	PRIME COAT STA 521+22 TO STA 526+17	758	GAL
430 0143	SUPERPAVE FAA 43 STA 521+22 TO STA 526+17	1572	TON
430 5834	PG 58-34 ASPHALT CEMENT STA 521+22 TO STA 526+17	94	TON
550 0310	10IN NON-REINF CONCRETE PVMT CL AE-DOWELED STA 526+17 TO STA 527+50	745	SY
709 0151	GEOSYNTHETIC MATERIAL TYPE R1 STA 526+17 TO STA 527+50	996	SY
714 9696	EDGEDRAIN NON PERMEABLE BASE STA 526+17 TO STA 527+50	542	LF
748 0140	CURB & GUTTER-TYPE I STA 526+17 TO STA 527+50	542	LF
990 0400	PIPE CLEANOUT STA 526+17 TO STA 527+50	1	EA

H:\Fargo\JBN\6000\6059\18_6059_145 - 52nd Ave. Design\CAD\Plans\090--PAVEMENT JOINTING LAYOUT.dwg 08/15/18 06:03:23AM H:\Fargo\JBN\6000\6059\18_6059_145 - 52nd Ave. Design\CAD\Plans\090--PAVEMENT JOINTING LAYOUT.dwg



- #4 DEFORMED TIE BAR
- ===== DOWELED JOINT
- R REINFORCED PANELS
- [Pattern] IMPRESSIONED CONCRETE
- [Pattern] 5" SIDEWALK
- [Pattern] 6" SIDEWALK
- [Pattern] MEDIAN NOSE
- [Pattern] 10" ASPHALT PAVEMENT

- NOTE:**
1. ALL CONCRETE PAVEMENT JOINTS ADJACENT TO EXISTING CONCRETE SHALL MATCH THE EXISTING JOINT PATTERN.
 2. ALL CONCRETE PAVEMENT SHALL BE DOWELED WITH REINFORCED PANELS AT UTILITY CROSSINGS. REINFORCED PANELS SHALL NOT BE PAID FOR SEPARATELY BUT INCLUDED IN THE PRICE BID FOR 10" NON-REINF. CONC. PVMT CL AE-DOWELED.
 3. ALL MANHOLE CASTINGS WITHIN THE CONCRETE PAVEMENT SHALL BE FLOATING CASTING R-1955-1. ALL COSTS FOR THE FLOATING CASTING SHALL BE INCLUDED IN THE PRICE OF EACH STRUCTURE.
 4. POUR CURB & GUTTER SEPARATE FROM ADJACENT CONCRETE PAVEMENT.
 5. INSTALL MH CASTINGS WITH PAVING OPERATION OR INSTALL WITH EACH ADJOINING FULL CONCRETE PANEL. MH ISOLATION OR BOX OUTS WILL NOT BE ALLOWED.



THE CITY OF
Fargo
FAR MORE



Proj. No. 6059-0145
Houston
Engineering Inc.
Ph: 701.237.5065

ALL ELEVATIONS ARE BASED ON
THE U.S.G.S. VERTICAL DATUM OF 1988.
(UNLESS NOTED OTHERWISE)

SPEC CODE	BID ITEM	QTY	UNIT
302 0101	SALVAGED BASE COURSE STA 527+50 TO STA 535+00	2809	CY
550 0310	10IN NON-REINF CONCRETE PVMT CL AE-DOWELED STA 527+50 TO STA 535+00	6466	SY
709 0151	GEOSYNTHETIC MATERIAL TYPE R1 STA 527+50 TO STA 535+00	8109	SY
714 9696	EDGEDRAIN NON PERMEABLE BASE STA 527+50 TO STA 535+00	1662	LF
748 0140	CURB & GUTTER-TYPE I STA 527+50 TO STA 535+00	2858	LF
750 0030	PIGMENTED IMPRINTED CONCRETE STA 527+50 TO STA 535+00	427	SY
750 0125	SIDEWALK CONCRETE 5IN STA 527+50 TO STA 535+00	654	SY
750 0140	SIDEWALK CONCRETE 6IN STA 527+50 TO STA 535+000	58	SY
750 0210	CONCRETE MEDIAN NOSE PAVING STA 527+50 TO STA 535+00	6	SY
750 2115	DETECTABLE WARNING PANELS STA 527+50 TO STA 535+00	181	SF

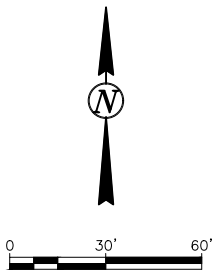
This document was originally issued and sealed by
Adam M. Ruud
Registration Number 10407
on 8/15/18 and the original document is stored in the Engineering Dept. at City Hall.

Paving Layouts

52nd Ave S - West of 63rd St S to 45th St S

08/15/18 06:03:33AM H:\Fargo\IBN\6000\6059\18_6059_145 - 52nd Ave. Design\CAD\Plans\090--PAVEMENT JOINTING LAYOUT.dwg

	STATE	PROJECT NO.	SECTION NO.	SHEET NO.
	ND	SU-8-984(164)	90	3



- #4 DEFORMED TIE BAR
- ===== DOWELED JOINT
- R REINFORCED PANELS
- IMPRESSED CONCRETE
- 5" SIDEWALK
- 6" SIDEWALK
- MEDIAN NOSE
- 10" ASPHALT PAVEMENT

- NOTE:**
1. ALL CONCRETE PAVEMENT JOINTS ADJACENT TO EXISTING CONCRETE SHALL MATCH THE EXISTING JOINT PATTERN.
 2. ALL CONCRETE PAVEMENT SHALL BE DOWELED WITH REINFORCED PANELS AT UTILITY CROSSINGS. REINFORCED PANELS SHALL NOT BE PAID FOR SEPARATELY BUT INCLUDED IN THE PRICE BID FOR 10" NON-REINF. CONC. PVMT CL AE-DOWELED.
 3. ALL MANHOLE CASTINGS WITHIN THE CONCRETE PAVEMENT SHALL BE FLOATING CASTING R-1955-1. ALL COSTS FOR THE FLOATING CASTING SHALL BE INCLUDED IN THE PRICE OF EACH STRUCTURE.
 4. POUR CURB & GUTTER SEPARATE FROM ADJACENT CONCRETE PAVEMENT.
 5. INSTALL MH CASTINGS WITH PAVING OPERATION OR INSTALL WITH EACH ADJOINING FULL CONCRETE PANEL. MH ISOLATION OR BOX OUTS WILL NOT BE ALLOWED.



Proj. No. 6059-0145
Houston
Engineering Inc.
Ph: 701.237.5065

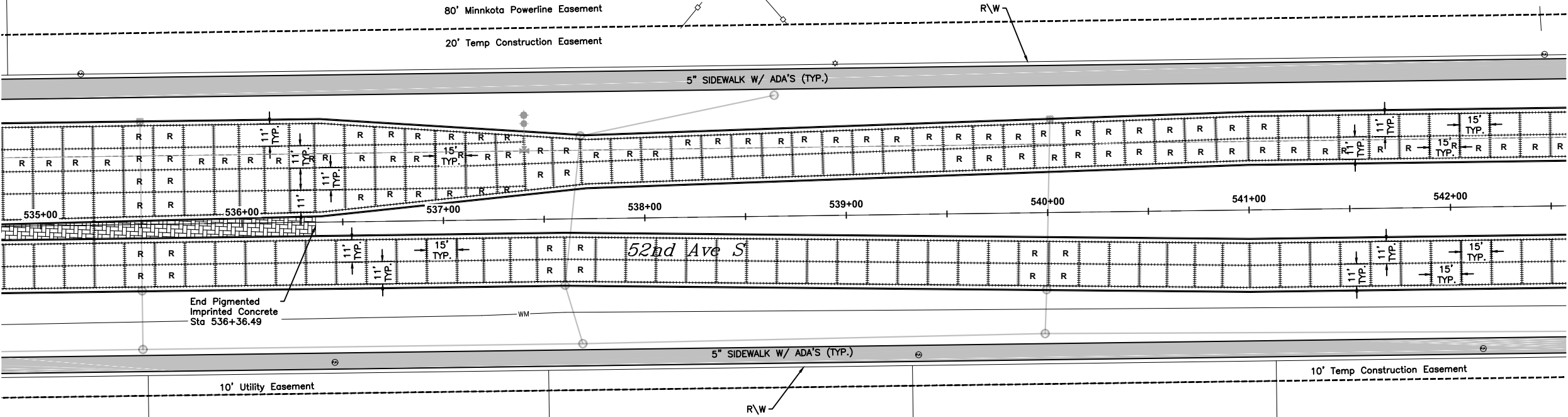
ALL ELEVATIONS ARE BASED ON
THE U.S.G.S. VERTICAL DATUM OF 1988.
(UNLESS NOTED OTHERWISE)

This document was
originally issued and
sealed by
Adam M. Ruud
Registration Number
10407
on 8/15/18 and the
original document is
stored in the Engineering
Dept. at City Hall.

Paving Layouts

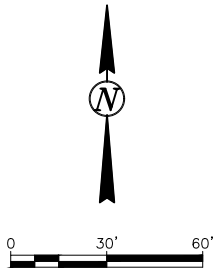
52nd Ave S - West of 63rd St S to 45th St S

SPEC CODE	BID ITEM	QTY	UNIT
302 0101	SALVAGED BASE COURSE STA 535+00 TO STA 542+50	1971	CY
550 0310	10IN NON-REINF CONCRETE PVMT CL AE-DOWELED STA 535+00 TO STA 542+50	4181	SY
709 0151	GEOSYNTHETIC MATERIAL TYPE R1 STA 535+00 TO STA 542+50	5665	SY
714 9696	EDGEDRAIN NON PERMEABLE BASE STA 535+00 TO STA 542+50	2728	LF
748 0140	CURB & GUTTER-TYPE 1 STA 535+00 TO STA 542+50	3001	LF
750 0030	PIGMENTED IMPRINTED CONCRETE STA 535+00 TO STA 542+50	124	SY
750 0125	SIDEWALK CONCRETE 5IN STA 535+00 TO STA 542+50	1500	SY
990 0400	PIPE CLEANOUT STA 535+00 TO STA 542+50	2	EA



08/15/18 06:03:43AM H:\Fargo\JBN\6000\6059\18_6059_145 - 52nd Ave. Design\CAD\Plans\090-PAVEMENT JOINTING LAYOUT.dwg

	STATE	PROJECT NO.	SECTION NO.	SHEET NO.
	ND	SU-8-984(164)	90	4



- #4 DEFORMED TIE BAR
- ===== DOWELED JOINT
- R REINFORCED PANELS
- IMPRESSED CONCRETE
- 5" SIDEWALK
- 6" SIDEWALK
- MEDIAN NOSE
- 10" ASPHALT PAVEMENT

NOTE:

1. ALL CONCRETE PAVEMENT JOINTS ADJACENT TO EXISTING CONCRETE SHALL MATCH THE EXISTING JOINT PATTERN.
2. ALL CONCRETE PAVEMENT SHALL BE DOWELED WITH REINFORCED PANELS AT UTILITY CROSSINGS. REINFORCED PANELS SHALL NOT BE PAID FOR SEPARATELY BUT INCLUDED IN THE PRICE BID FOR 10" NON-REINF. CONC. PVMT CL AE-DOWELED.
3. ALL MANHOLE CASTINGS WITHIN THE CONCRETE PAVEMENT SHALL BE FLOATING CASTING R-1955-1. ALL COSTS FOR THE FLOATING CASTING SHALL BE INCLUDED IN THE PRICE OF EACH STRUCTURE.
4. POUR CURB & GUTTER SEPARATE FROM ADJACENT CONCRETE PAVEMENT.
5. INSTALL MH CASTINGS WITH PAVING OPERATION OR INSTALL WITH EACH ADJOINING FULL CONCRETE PANEL. MH ISOLATION OR BOX OUTS WILL NOT BE ALLOWED.



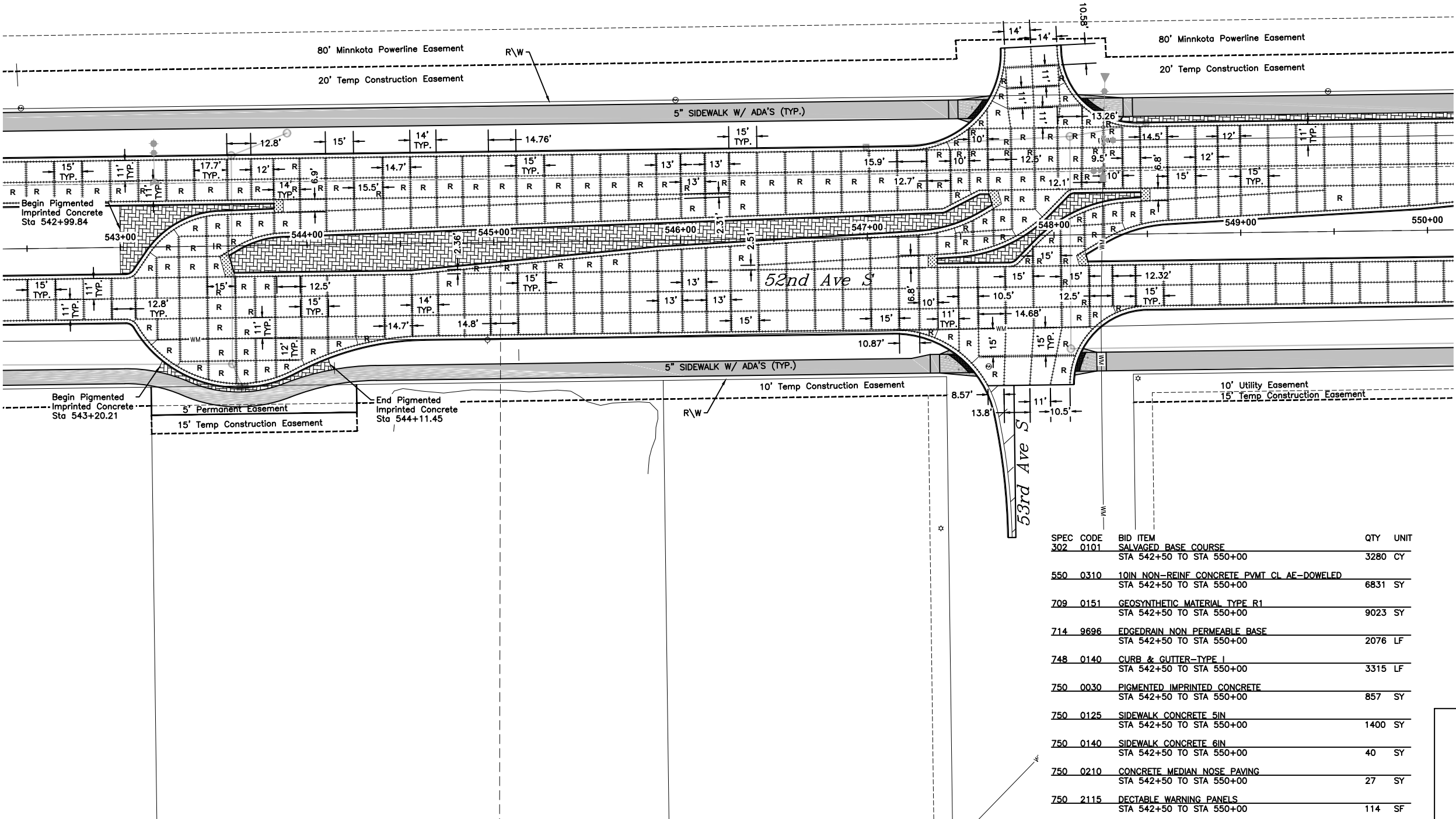
Proj. No. 6059-0145
Houston
Engineering Inc.
Ph: 701.237.5065

ALL ELEVATIONS ARE BASED ON
THE U.S.G.S. VERTICAL DATUM OF 1988.
(UNLESS NOTED OTHERWISE)

This document was originally issued and sealed by
Adam M. Ruud
Registration Number 10407
on 8/15/18 and the original document is stored in the Engineering Dept. at City Hall.

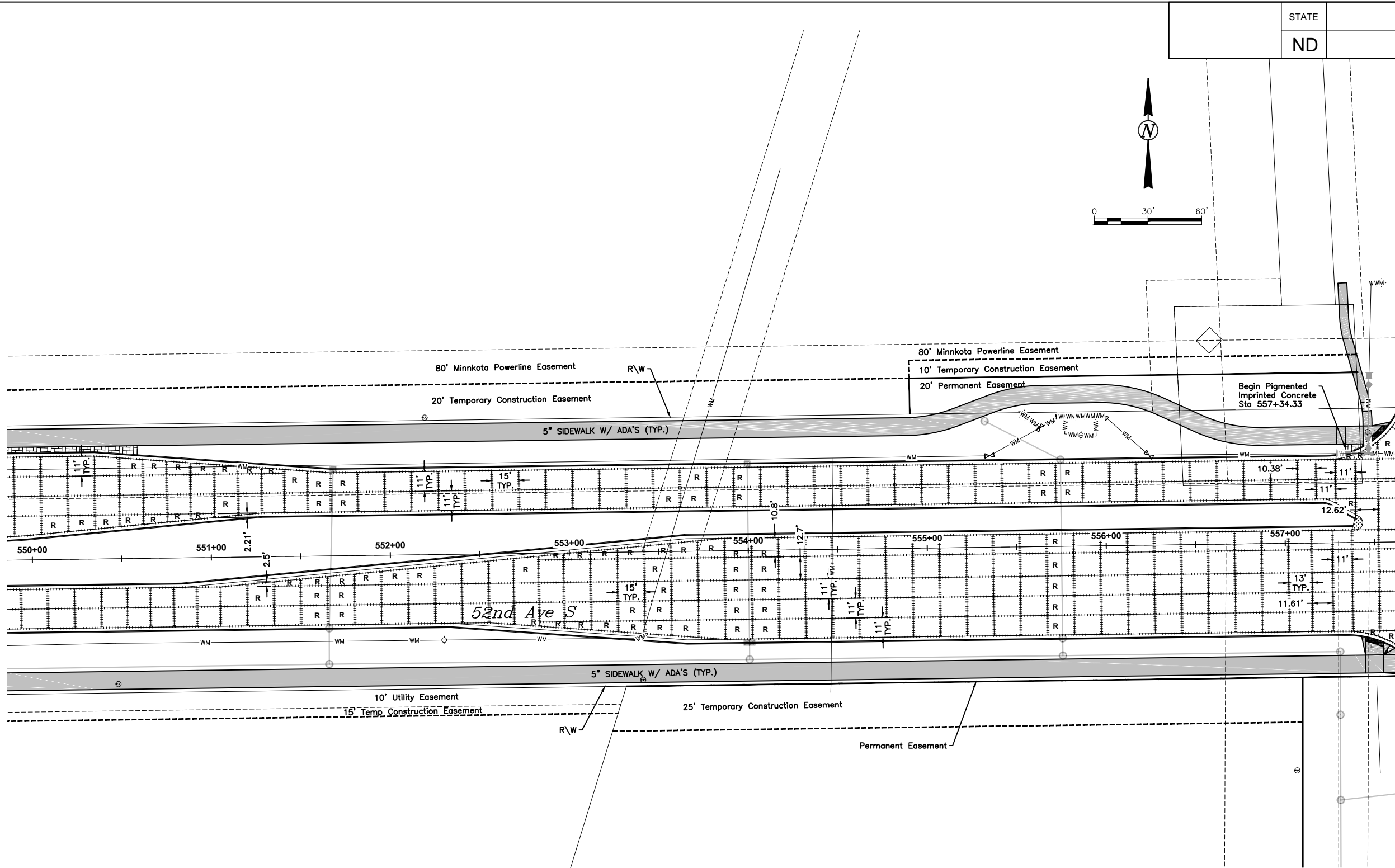
Paving Layouts

52nd Ave S - West of 63rd St S to 45th St S



SPEC CODE	BID ITEM	QTY	UNIT
302 0101	SALVAGED BASE COURSE STA 542+50 TO STA 550+00	3280	CY
550 0310	10IN NON-REINF CONCRETE PVMT CL AE-DOWELED STA 542+50 TO STA 550+00	6831	SY
709 0151	GEOSYNTHETIC MATERIAL TYPE R1 STA 542+50 TO STA 550+00	9023	SY
714 9696	EDGEDRAIN NON PERMEABLE BASE STA 542+50 TO STA 550+00	2076	LF
748 0140	CURB & GUTTER-TYPE I STA 542+50 TO STA 550+00	3315	LF
750 0030	PIGMENTED IMPRINTED CONCRETE STA 542+50 TO STA 550+00	857	SY
750 0125	SIDEWALK CONCRETE 5IN STA 542+50 TO STA 550+00	1400	SY
750 0140	SIDEWALK CONCRETE 6IN STA 542+50 TO STA 550+00	40	SY
750 0210	CONCRETE MEDIAN NOSE PAVING STA 542+50 TO STA 550+00	27	SY
750 2115	DECTABLE WARNING PANELS STA 542+50 TO STA 550+00	114	SF
990 0400	PIPE CLEANOUT STA 542+50 TO STA 550+00	2	EA

H:\Fargo\IBN\6000\6059\18_6059_145 - 52nd Ave. Design\CAD\Plans\090--PAVEMENT JOINTING LAYOUT.dwg 08/15/18 06:03:55AM



- #4 DEFORMED TIE BAR
- ===== DOWELED JOINT
- R REINFORCED PANELS
- IMPRESSED CONCRETE
- 5" SIDEWALK
- 6" SIDEWALK
- MEDIAN NOSE
- 10" ASPHALT PAVEMENT

NOTE:

1. ALL CONCRETE PAVEMENT JOINTS ADJACENT TO EXISTING CONCRETE SHALL MATCH THE EXISTING JOINT PATTERN.
2. ALL CONCRETE PAVEMENT SHALL BE DOWELED WITH REINFORCED PANELS AT UTILITY CROSSINGS. REINFORCED PANELS SHALL NOT BE PAID FOR SEPARATELY BUT INCLUDED IN THE PRICE BID FOR 10" NON-REINF. CONC. PVMT CL AE-DOWELED.
3. ALL MANHOLE CASTINGS WITHIN THE CONCRETE PAVEMENT SHALL BE FLOATING CASTING R-1955-1. ALL COSTS FOR THE FLOATING CASTING SHALL BE INCLUDED IN THE PRICE OF EACH STRUCTURE.
4. POUR CURB & GUTTER SEPARATE FROM ADJACENT CONCRETE PAVEMENT.
5. INSTALL MH CASTINGS WITH PAVING OPERATION OR INSTALL WITH EACH ADJOINING FULL CONCRETE PANEL. MH ISOLATION OR BOX OUTS WILL NOT BE ALLOWED.



Proj. No. 6059-0145
Houston
Engineering Inc.
Ph: 701.237.5065

ALL ELEVATIONS ARE BASED ON
THE U.S.G.S. VERTICAL DATUM OF 1988.
(UNLESS NOTED OTHERWISE)

This document was
originally issued and
sealed by
Adam M. Ruud
Registration Number
10407
on 8/15/18 and the
original document is
stored in the Engineering
Dept. at City Hall.

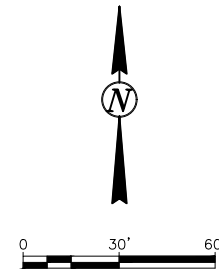
Paving Layouts

52nd Ave S - West of 63rd St S to 45th St S

SPEC CODE	BID ITEM	QTY	UNIT
302 0101	SALVAGED BASE COURSE STA 550+00 TO STA 557+50	2462	CY
550 0310	10IN NON-REINF CONCRETE PVMT CL AE-DOWELED STA 550+00 TO STA 557+50	5825	SY
709 0151	GEOSYNTHETIC MATERIAL TYPE R1 STA 550+00 TO STA 557+50	7213	SY
714 9696	EDGEDRAIN NON PERMEABLE BASE STA 550+00 TO STA 557+50	2984	LF
748 0140	CURB & GUTTER-TYPE I STA 550+00 TO STA 557+50	2984	LF
750 0030	PIGMENTED IMPRINTED CONCRETE STA 550+00 TO STA 557+50	22	SY
750 0125	SIDEWALK CONCRETE 5IN STA 550+00 TO STA 557+50	1661	SY
750 0210	CONCRETE MEDIAN NOSE PAVING STA 550+00 TO STA 557+50	3	SY
990 0400	PIPE CLEANOUT STA 550+00 TO STA 557+50	1	EA

08/15/18 06:04:04AM H:\Fargo\JBN\6000\6059\18_6059_145 - 52nd Ave. Design\CAD\Plans\090--PAVEMENT JOINTING LAYOUT.dwg

	STATE	PROJECT NO.	SECTION NO.	SHEET NO.
	ND	SU-8-984(164)	90	6



- #4 DEFORMED TIE BAR
- ===== DOWELED JOINT
- R REINFORCED PANELS
- IMPRESSED CONCRETE
- 5" SIDEWALK
- 6" SIDEWALK
- MEDIAN NOSE
- 10" ASPHALT PAVEMENT

NOTE:

1. ALL CONCRETE PAVEMENT JOINTS ADJACENT TO EXISTING CONCRETE SHALL MATCH THE EXISTING JOINT PATTERN.
2. ALL CONCRETE PAVEMENT SHALL BE DOWELED WITH REINFORCED PANELS AT UTILITY CROSSINGS. REINFORCED PANELS SHALL NOT BE PAID FOR SEPARATELY BUT INCLUDED IN THE PRICE BID FOR 10" NON-REINF. CONC. PVMT CL AE-DOWELED.
3. ALL MANHOLE CASTINGS WITHIN THE CONCRETE PAVEMENT SHALL BE FLOATING CASTING R-1955-1. ALL COSTS FOR THE FLOATING CASTING SHALL BE INCLUDED IN THE PRICE OF EACH STRUCTURE.
4. POUR CURB & GUTTER SEPARATE FROM ADJACENT CONCRETE PAVEMENT.
5. INSTALL MH CASTINGS WITH PAVING OPERATION OR INSTALL WITH EACH ADJOINING FULL CONCRETE PANEL. MH ISOLATION OR BOX OUTS WILL NOT BE ALLOWED.



Proj. No. 6059-0145
Houston
Engineering Inc.
Ph: 701.237.5065

ALL ELEVATIONS ARE BASED ON
THE U.S.G.S. VERTICAL DATUM OF 1988.
(UNLESS NOTED OTHERWISE)

This document was originally issued and sealed by
Adam M. Ruud
Registration Number 10407
on 8/15/18 and the original document is stored in the Engineering Dept. at City Hall.

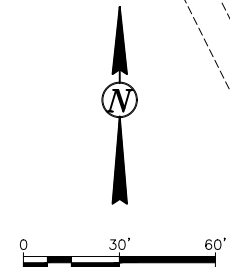
Paving Layouts

52nd Ave S - West of 63rd St S to 45th St S

SPEC CODE	BID ITEM	QTY	UNIT
302 0101	SALVAGED BASE COURSE STA 557+50 TO STA 565+00	3132	CY
550 0310	10IN NON-REINF CONCRETE PVMT CL AE-DOWELED STA 557+50 TO STA 565+00	7697	SY
709 0151	GEOSYNTHETIC MATERIAL TYPE R1 STA 557+50 TO STA 565+00	9214	SY
714 9696	EDGEDRAIN NON PERMEABLE BASE STA 557+50 TO STA 565+00	2981	LF
748 0140	CURB & GUTTER-TYPE I STA 557+50 TO STA 565+00	3114	LF
750 0030	PIGMENTED IMPRINTED CONCRETE STA 557+50 TO STA 565+00	53	SY
750 0125	SIDEWALK CONCRETE 5IN STA 557+50 TO STA 565+00	1586	SY
750 0140	SIDEWALK CONCRETE 6IN STA 557+50 TO STA 565+00	64	SY
750 0210	CONCRETE MEDIAN NOSE PAVING STA 557+50 TO STA 565+00	10	SY
750 2115	DECTABLE WARNING PANELS STA 557+50 TO STA 565+00	186	SF
990 0400	PIPE CLEANOUT STA 557+50 TO STA 565+00	2	EA

08/15/18 06:04:14AM H:\Fargo\JBN\6000\6059\18_6059_145 - 52nd Ave. Design\CAD\Plans\090--PAVEMENT JOINTING LAYOUT.dwg

	STATE	PROJECT NO.	SECTION NO.	SHEET NO.
	ND	SU-8-984(164)	90	7



- #4 DEFORMED TIE BAR
- ===== DOWELED JOINT
- R REINFORCED PANELS
- IMPRESSED CONCRETE
- 5" SIDEWALK
- 6" SIDEWALK
- MEDIAN NOSE
- 10" ASPHALT PAVEMENT

NOTE:

1. ALL CONCRETE PAVEMENT JOINTS ADJACENT TO EXISTING CONCRETE SHALL MATCH THE EXISTING JOINT PATTERN.
2. ALL CONCRETE PAVEMENT SHALL BE DOWELED WITH REINFORCED PANELS AT UTILITY CROSSINGS. REINFORCED PANELS SHALL NOT BE PAID FOR SEPARATELY BUT INCLUDED IN THE PRICE BID FOR 10" NON-REINF. CONC. PVMT CL AE-DOWELED.
3. ALL MANHOLE CASTINGS WITHIN THE CONCRETE PAVEMENT SHALL BE FLOATING CASTING R-1955-1. ALL COSTS FOR THE FLOATING CASTING SHALL BE INCLUDED IN THE PRICE OF EACH STRUCTURE.
4. POUR CURB & GUTTER SEPARATE FROM ADJACENT CONCRETE PAVEMENT.
5. INSTALL MH CASTINGS WITH PAVING OPERATION OR INSTALL WITH EACH ADJOINING FULL CONCRETE PANEL. MH ISOLATION OR BOX OUTS WILL NOT BE ALLOWED.



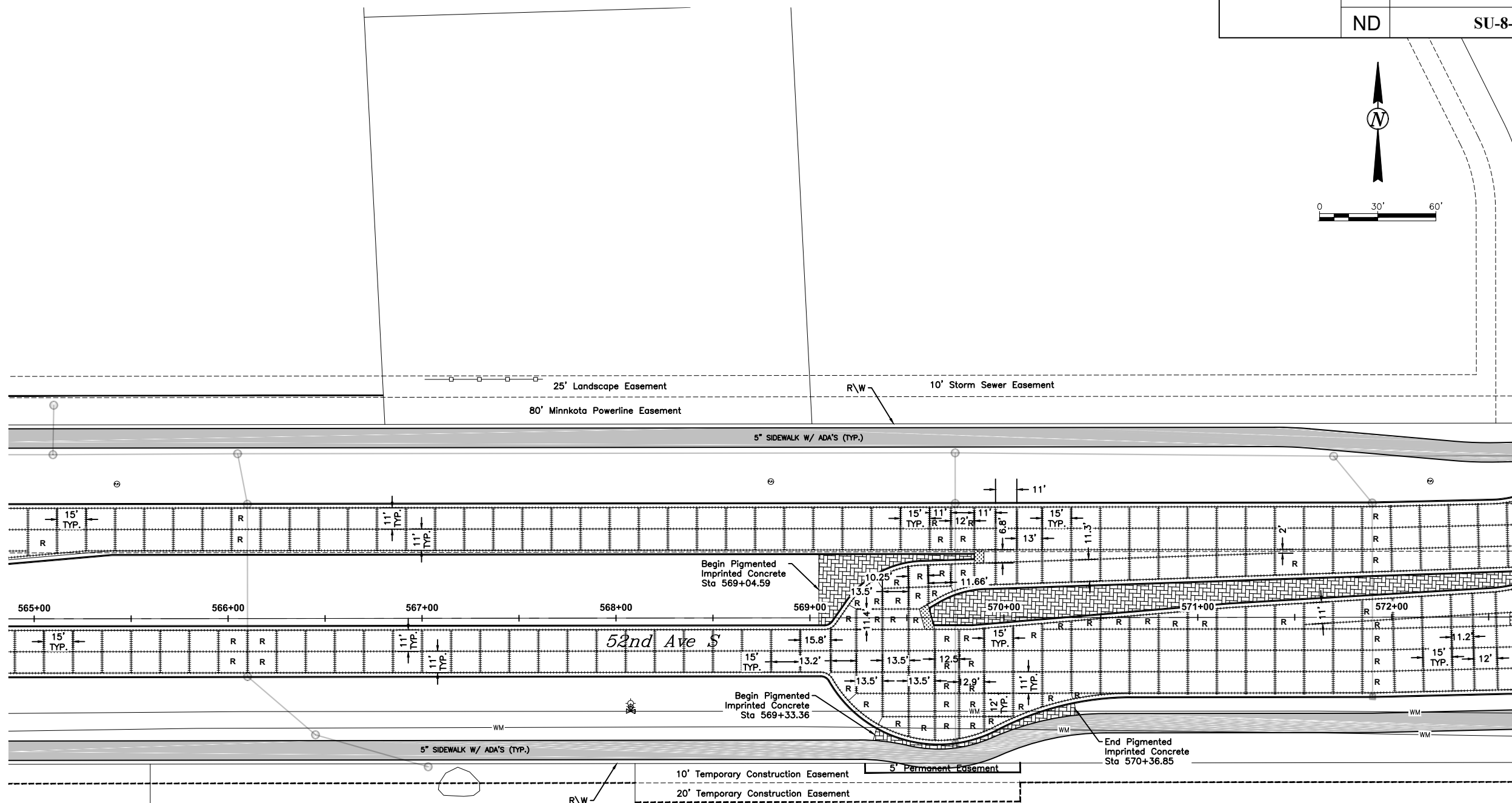
Proj. No. 6059-0145
Houston
Engineering Inc.
Ph: 701.237.5065

ALL ELEVATIONS ARE BASED ON
THE U.S.G.S. VERTICAL DATUM OF 1988.
(UNLESS NOTED OTHERWISE)

This document was originally issued and sealed by
Adam M. Ruud
Registration Number 10407
on 8/15/18 and the original document is stored in the Engineering Dept. at City Hall.

Paving Layouts

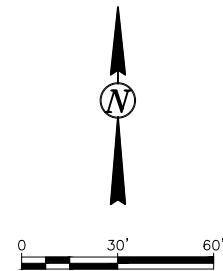
52nd Ave S - West of 63rd St S to 45th St S



SPEC CODE	BID ITEM	QTY	UNIT
302 0101	SALVAGED BASE COURSE STA 565+00 TO STA 572+50	2534	CY
550 0310	10IN NON-REINF CONCRETE PVMT CL AE-DOWELED STA 565+00 TO STA 572+50	5171	SY
709 0151	GEOSYNTHETIC MATERIAL TYPE R1 STA 565+00 TO STA 572+50	6998	SY
714 9696	EDGEDRAIN NON PERMEABLE BASE STA 565+00 TO STA 572+50	2326	LF
748 0140	CURB & GUTTER-TYPE I STA 565+00 TO STA 572+50	3077	LF
750 0030	PIGMENTED IMPRINTED CONCRETE STA 565+00 TO STA 572+50	514	SY
750 0125	SIDEWALK CONCRETE 5IN STA 565+00 TO STA 572+50	1670	SY
750 0210	CONCRETE MEDIAN NOSE PAVING STA 565+00 TO STA 572+50	11	SY
990 0400	PIPE CLEANOUT STA 565+00 TO STA 572+50	2	EA

08/22/18 03:51:45PM H:\Fargo\JBN\6000\6059\18_6059_145 - 52nd Ave. Design\CAD\Plans\090--PAVEMENT JOINTING LAYOUT.dwg

	STATE	PROJECT NO.	SECTION NO.	SHEET NO.
	ND	SU-8-984(164)	90	8



- #4 DEFORMED TIE BAR
- ===== DOWELED JOINT
- R REINFORCED PANELS
- IMPRESSED CONCRETE
- 5" SIDEWALK
- 6" SIDEWALK
- MEDIAN NOSE
- 10" ASPHALT PAVEMENT

NOTE:

1. ALL CONCRETE PAVEMENT JOINTS ADJACENT TO EXISTING CONCRETE SHALL MATCH THE EXISTING JOINT PATTERN.
2. ALL CONCRETE PAVEMENT SHALL BE DOWELED WITH REINFORCED PANELS AT UTILITY CROSSINGS. REINFORCED PANELS SHALL NOT BE PAID FOR SEPARATELY BUT INCLUDED IN THE PRICE BID FOR 10" NON-REINF. CONC. PVMT CL AE-DOWELED.
3. ALL MANHOLE CASTINGS WITHIN THE CONCRETE PAVEMENT SHALL BE FLOATING CASTING R-1955-1. ALL COSTS FOR THE FLOATING CASTING SHALL BE INCLUDED IN THE PRICE OF EACH STRUCTURE.
4. POUR CURB & GUTTER SEPARATE FROM ADJACENT CONCRETE PAVEMENT.
5. INSTALL MH CASTINGS WITH PAVING OPERATION OR INSTALL WITH EACH ADJOINING FULL CONCRETE PANEL. MH ISOLATION OR BOX OUTS WILL NOT BE ALLOWED.



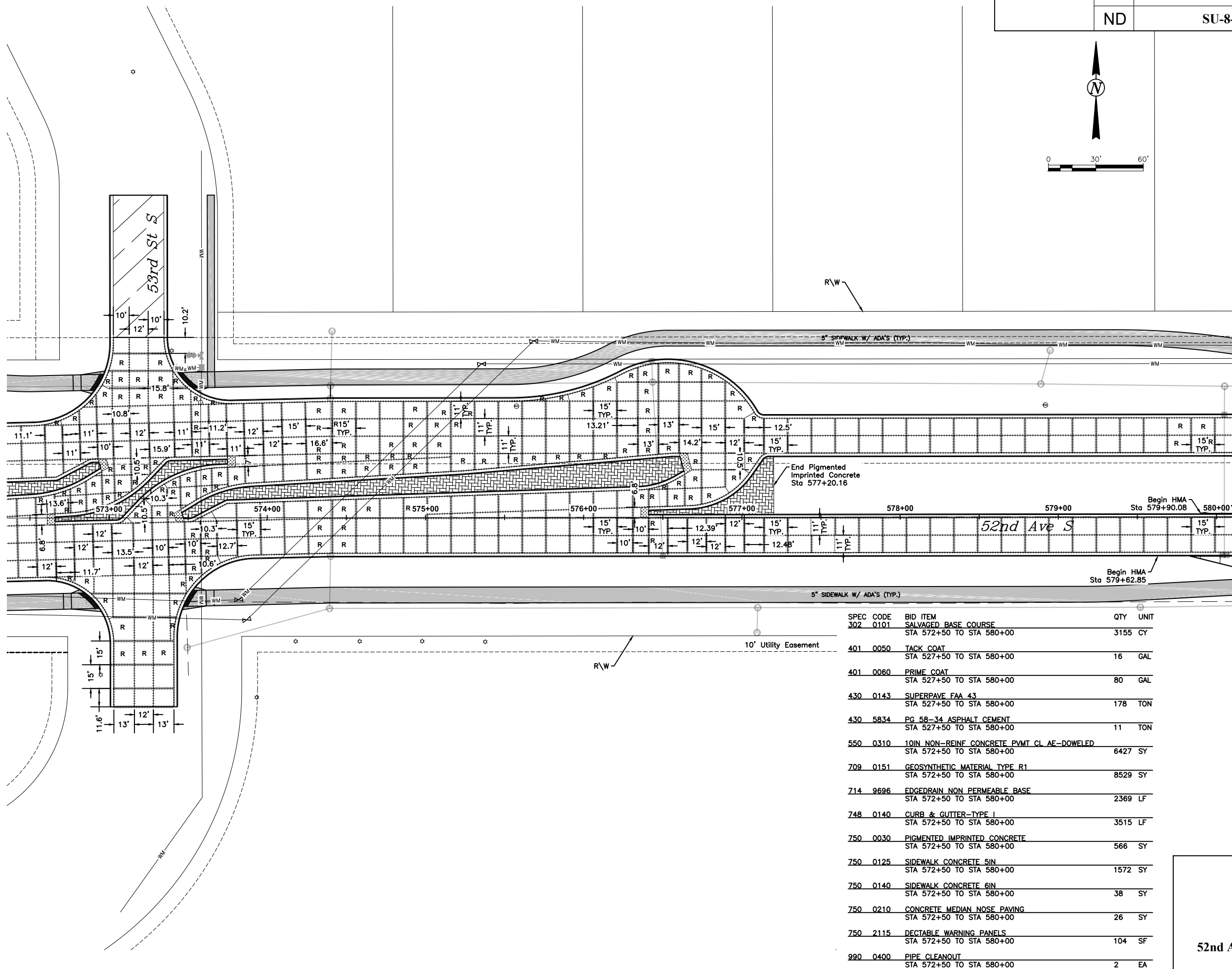
Proj. No. 6059-0145
Houston
Engineering Inc.
Ph: 701.237.5065

ALL ELEVATIONS ARE BASED ON
THE U.S.G.S. VERTICAL DATUM OF 1988.
(UNLESS NOTED OTHERWISE)

This document was
originally issued and
sealed by
Adam M. Ruud
Registration Number
10407
on 8/22/18 and the
original document is
stored in the Engineering
Dept. at City Hall.

Paving Layouts

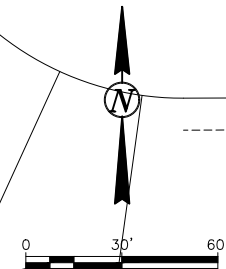
52nd Ave S - West of 63rd St S to 45th St S



SPEC CODE	BID ITEM	QTY	UNIT
302 0101	SALVAGED BASE COURSE STA 572+50 TO STA 580+00	3155	CY
401 0050	TACK COAT STA 527+50 TO STA 580+00	16	GAL
401 0060	PRIME COAT STA 527+50 TO STA 580+00	80	GAL
430 0143	SUPERPAVE FAA 43 STA 527+50 TO STA 580+00	178	TON
430 5834	PG 58-34 ASPHALT CEMENT STA 527+50 TO STA 580+00	11	TON
550 0310	10IN NON-REINF CONCRETE PVMT CL AE-DOWELED STA 572+50 TO STA 580+00	6427	SY
709 0151	GEOSYNTHETIC MATERIAL TYPE R1 STA 572+50 TO STA 580+00	8529	SY
714 9696	EDGEDRAIN NON PERMEABLE BASE STA 572+50 TO STA 580+00	2369	LF
748 0140	CURB & GUTTER-TYPE I STA 572+50 TO STA 580+00	3515	LF
750 0030	PIGMENTED IMPRINTED CONCRETE STA 572+50 TO STA 580+00	566	SY
750 0125	SIDEWALK CONCRETE 5IN STA 572+50 TO STA 580+00	1572	SY
750 0140	SIDEWALK CONCRETE 6IN STA 572+50 TO STA 580+00	38	SY
750 0210	CONCRETE MEDIAN NOSE PAVING STA 572+50 TO STA 580+00	26	SY
750 2115	DECTABLE WARNING PANELS STA 572+50 TO STA 580+00	104	SF
990 0400	PIPE CLEANOUT STA 572+50 TO STA 580+00	2	EA

08/22/18 03:51:49PM H:\Fargo\JBN\6059\18_6059_145 - 52nd Ave. Design\CAD\Plans\090-PAVEMENT JOINTING LAYOUT.dwg

STATE	PROJECT NO.	SECTION NO.	SHEET NO.
ND	SU-8-984(164)	90	9



- #4 DEFORMED TIE BAR
- ===== DOWELED JOINT
- R REINFORCED PANELS
- IMPRESSED CONCRETE
- 5" SIDEWALK
- 6" SIDEWALK
- MEDIAN NOSE
- 10" ASPHALT PAVEMENT

NOTE:

- ALL CONCRETE PAVEMENT JOINTS ADJACENT TO EXISTING CONCRETE SHALL MATCH THE EXISTING JOINT PATTERN.
- ALL CONCRETE PAVEMENT SHALL BE DOWELED WITH REINFORCED PANELS AT UTILITY CROSSINGS. REINFORCED PANELS SHALL NOT BE PAID FOR SEPARATELY BUT INCLUDED IN THE PRICE BID FOR 10" NON-REINF. CONC. PVT CL AE-DOWELED.
- ALL MANHOLE CASTINGS WITHIN THE CONCRETE PAVEMENT SHALL BE FLOATING CASTING R-1955-1. ALL COSTS FOR THE FLOATING CASTING SHALL BE INCLUDED IN THE PRICE OF EACH STRUCTURE.
- POUR CURB & GUTTER SEPARATE FROM ADJACENT CONCRETE PAVEMENT.
- INSTALL MH CASTINGS WITH PAVING OPERATION OR INSTALL WITH EACH ADJOINING FULL CONCRETE PANEL. MH ISOLATION OR BOX OUTS WILL NOT BE ALLOWED.
- SEE SECTION 130 AND STANDARD DRAWING 764-60 FOR LIMITS OF 3" CURB HEIGHT THRU GUARDRAIL



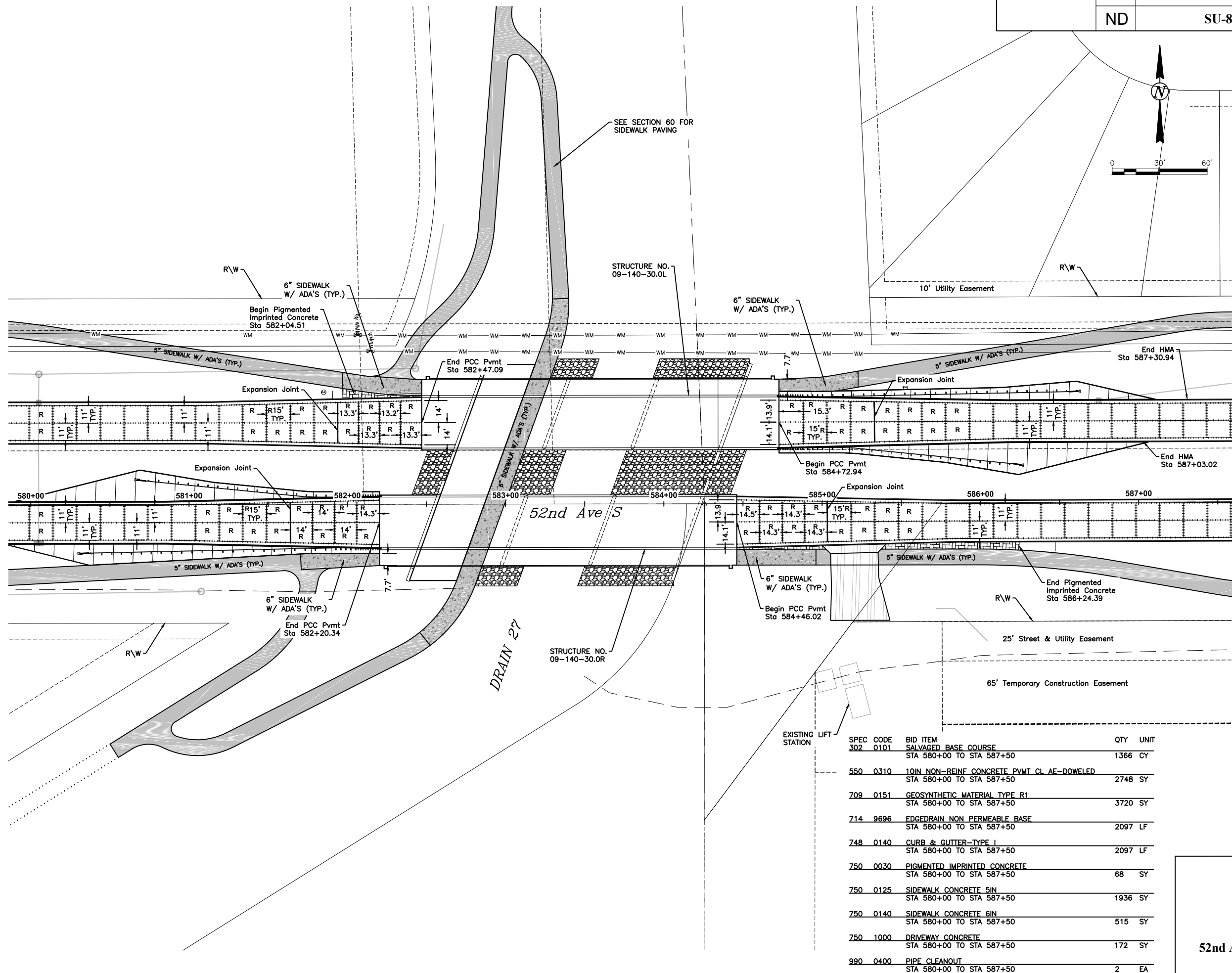
Proj. No. 6059-0145
Houston
Engineering Inc.
Ph: 701.237.5065

ALL ELEVATIONS ARE BASED ON
THE U.S.G.S. VERTICAL DATUM OF 1988.
(UNLESS NOTED OTHERWISE)

This document was originally issued and sealed by
Adam M. Ruud
Registration Number 10407
on 8/22/18 and the original document is stored in the Engineering Dept. at City Hall.

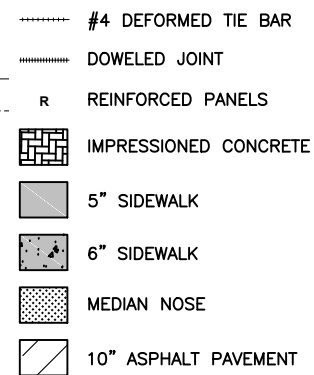
Paving Layouts

52nd Ave S - West of 63rd St S to 45th St S



EXISTING LIFT STATION

SPEC CODE	BID ITEM	QTY	UNIT
302 0101	SALVAGED BASE COURSE STA 580+00 TO STA 587+50	1366	CY
550 0310	10IN NON-REINF CONCRETE PVT CL AE-DOWELED STA 580+00 TO STA 587+50	2748	SY
709 0151	GEOSYNTHETIC MATERIAL TYPE R1 STA 580+00 TO STA 587+50	3720	SY
714 9696	EDGEDRAIN NON PERMEABLE BASE STA 580+00 TO STA 587+50	2097	LF
748 0140	CURB & GUTTER-TYPE I STA 580+00 TO STA 587+50	2097	LF
750 0030	PIGMENTED IMPRINTED CONCRETE STA 580+00 TO STA 587+50	68	SY
750 0125	SIDEWALK CONCRETE 5IN STA 580+00 TO STA 587+50	1936	SY
750 0140	SIDEWALK CONCRETE 6IN STA 580+00 TO STA 587+50	515	SY
750 1000	DRIVEWAY CONCRETE STA 580+00 TO STA 587+50	172	SY
990 0400	PIPE CLEANOUT STA 580+00 TO STA 587+50	2	EA



1. ALL CONCRETE PAVEMENT JOINTS ADJACENT TO EXISTING CONCRETE SHALL MATCH THE EXISTING JOINT PATTERN.
2. ALL CONCRETE PAVEMENT SHALL BE DOWELED WITH REINFORCED PANELS AT UTILITY CROSSINGS. REINFORCED PANELS SHALL NOT BE PAID FOR SEPARATELY BUT INCLUDED IN THE PRICE BID FOR 10" NON-REINF. CONC. PVMT CL AE-DOWELED.
3. ALL MANHOLE CASTINGS WITHIN THE CONCRETE PAVEMENT SHALL BE FLOATING CASTING R-1955-1. ALL COSTS FOR THE FLOATING CASTING SHALL BE INCLUDED IN THE PRICE OF EACH STRUCTURE.
4. POUR CURB & GUTTER SEPARATE FROM ADJACENT CONCRETE PAVEMENT.
5. INSTALL MH CASTINGS WITH PAVING OPERATION OR INSTALL WITH EACH ADJOINING FULL CONCRETE PANEL. MH ISOLATION OR BOX OUTS WILL NOT BE ALLOWED.



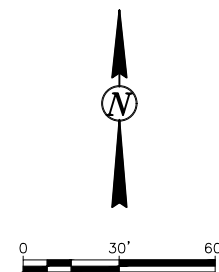
ALL ELEVATIONS ARE BASED ON
THE U.S.G.S. VERTICAL DATUM OF 1988
(UNLESS NOTED OTHERWISE)

Paving Layouts

SPEC	CODE	BID ITEM	QTY	UNIT
302	0101	SALVAGED BASE COURSE STA 587+50 TO STA 595+00	2227	CY
550	0310	10IN NON-REINF CONCRETE PVMT CL AF-DOWELED STA 587+50 TO STA 595+00	4553	SY
709	0151	GEOSYNTHETIC MATERIAL TYPE R1 STA 587+50 TO STA 595+00	6239	SY
714	9696	EDGEDRAIN NON PERMEABLE BASE STA 587+50 TO STA 595+00	2624	LF
748	0140	CURB & GUTTER-TYPE I STA 587+50 TO STA 595+00	3077	LF
750	0030	PIGMENTED IMPRINTED CONCRETE STA 587+50 TO STA 595+00	302	SY
750	0125	SIDEWALK CONCRETE 5IN STA 587+50 TO STA 595+00	1670	SY
750	0210	CONCRETE MEDIAN NOSE PAVING STA 587+50 TO STA 595+00	11	SY
990	0400	PIPE CLEANOUT STA 587+50 TO STA 595+00	2	EA

08/15/18 06:04:54AM H:\Fargo\JBN\6000\6059\18_6059_145 - 52nd Ave. Design\CAD\Plans\090-PAVEMENT JOINTING LAYOUT.dwg

	STATE	PROJECT NO.	SECTION NO.	SHEET NO.
	ND	SU-8-984(164)	90	11



- #4 DEFORMED TIE BAR
- ===== DOWELED JOINT
- R REINFORCED PANELS
- IMPRESSED CONCRETE
- 5" SIDEWALK
- 6" SIDEWALK
- MEDIAN NOSE
- 10" ASPHALT PAVEMENT

NOTE:

1. ALL CONCRETE PAVEMENT JOINTS ADJACENT TO EXISTING CONCRETE SHALL MATCH THE EXISTING JOINT PATTERN.
2. ALL CONCRETE PAVEMENT SHALL BE DOWELED WITH REINFORCED PANELS AT UTILITY CROSSINGS. REINFORCED PANELS SHALL NOT BE PAID FOR SEPARATELY BUT INCLUDED IN THE PRICE BID FOR 10" NON-REINF. CONC. PVMT CL AE-DOWELED.
3. ALL MANHOLE CASTINGS WITHIN THE CONCRETE PAVEMENT SHALL BE FLOATING CASTING R-1955-1. ALL COSTS FOR THE FLOATING CASTING SHALL BE INCLUDED IN THE PRICE OF EACH STRUCTURE.
4. POUR CURB & GUTTER SEPARATE FROM ADJACENT CONCRETE PAVEMENT.
5. INSTALL MH CASTINGS WITH PAVING OPERATION OR INSTALL WITH EACH ADJOINING FULL CONCRETE PANEL. MH ISOLATION OR BOX OUTS WILL NOT BE ALLOWED.



Proj. No. 6059-0145
Houston
Engineering Inc.
Ph: 701.237.5065

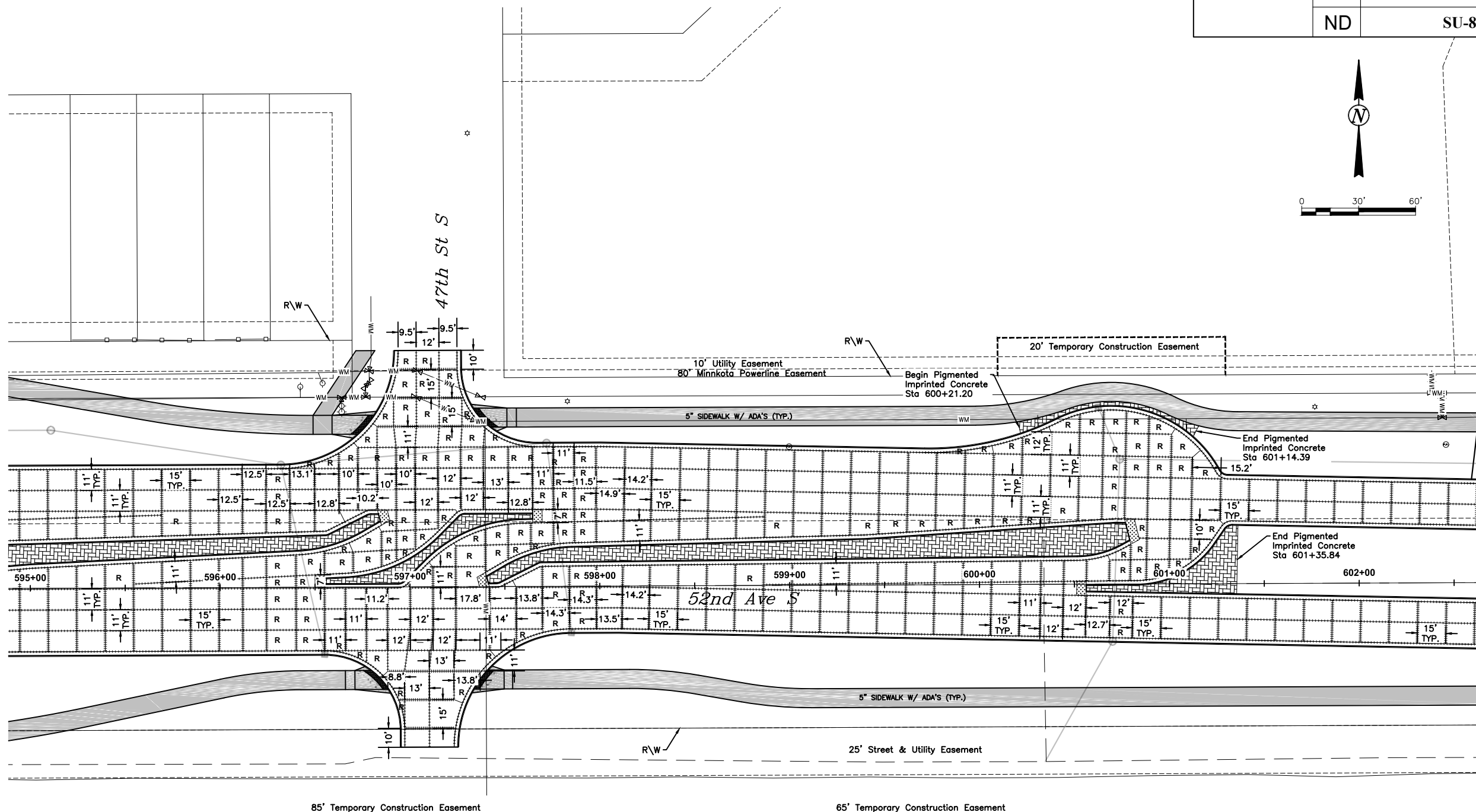
ALL ELEVATIONS ARE BASED ON
THE U.S.G.S. VERTICAL DATUM OF 1988.
(UNLESS NOTED OTHERWISE)

This document was
originally issued and
sealed by
Adam M. Ruud
Registration Number
10407
on 8/15/18 and the
original document is
stored in the Engineering
Dept. at City Hall.

Paving Layouts

52nd Ave S - West of 63rd St S to 45th St S

SPEC CODE	BID ITEM	QTY	UNIT
302 0101	SALVAGED BASE COURSE STA 595+00 TO STA 602+50	3282	CY
550 0310	10IN NON-REINF CONCRETE PVMT CL AE-DOWELED STA 595+00 TO STA 602+50	7020	SY
709 0151	GEOSYNTHETIC MATERIAL TYPE R1 STA 595+00 TO STA 602+50	9092	SY
714 9696	EDGEDRAIN NON PERMEABLE BASE STA 595+00 TO STA 602+50	1813	LF
748 0140	CURB & GUTTER-TYPE I STA 595+00 TO STA 602+50	3280	LF
750 0030	PIGMENTED IMPRINTED CONCRETE STA 595+00 TO STA 602+50	727	SY
750 0125	SIDEWALK CONCRETE 5IN STA 595+00 TO STA 602+50	1559	SY
750 0140	SIDEWALK CONCRETE 6IN STA 595+00 TO STA 602+50	40	SY
750 0210	CONCRETE MEDIAN NOSE PAVING STA 595+00 TO STA 602+50	27	SY
750 2115	DECTABLE WARNING PANELS STA 595+00 TO STA 602+50	108	SF
990 0400	PIPE CLEANOUT STA 595+00 TO STA 602+50	2	EA

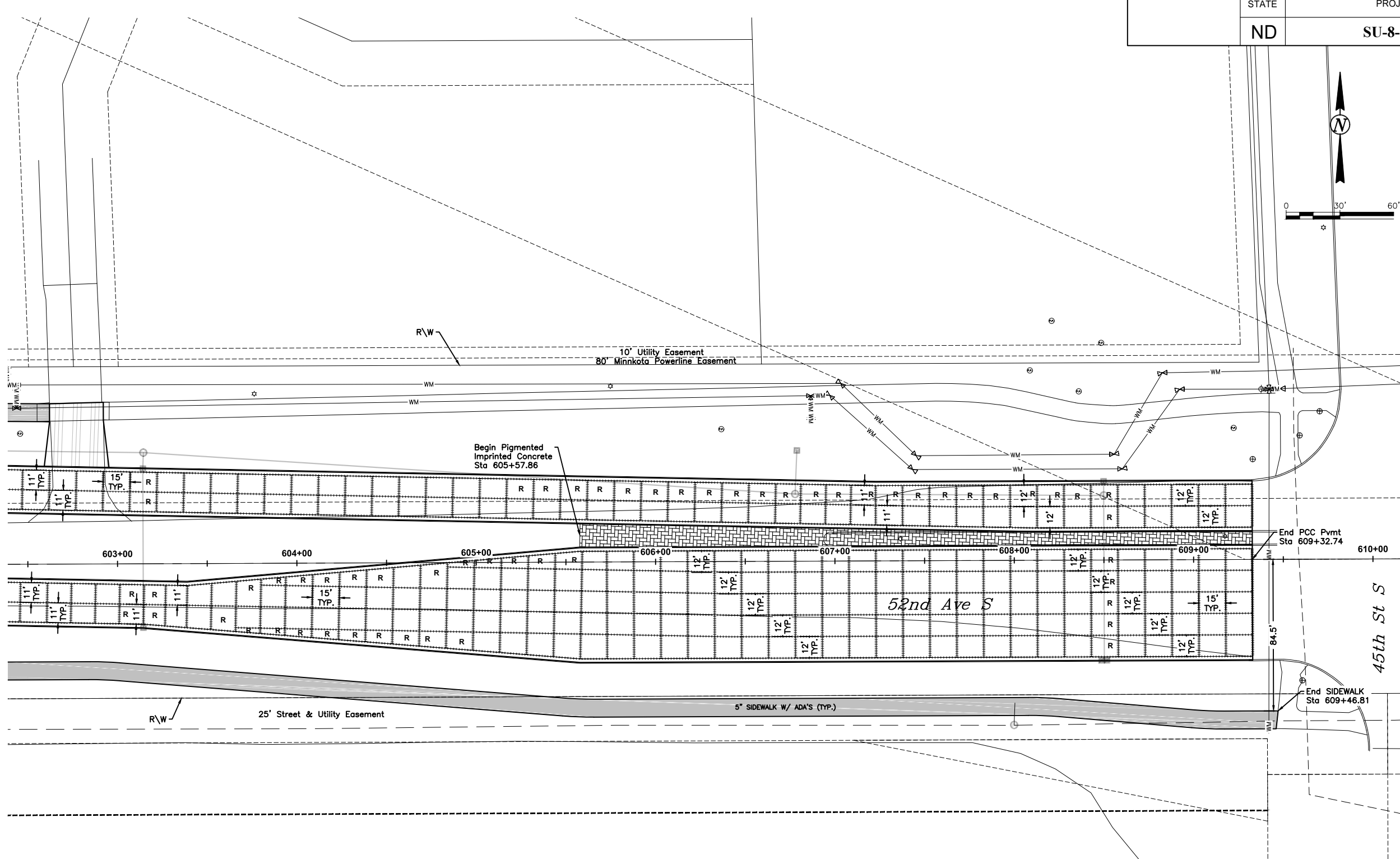


85' Temporary Construction Easement

65' Temporary Construction Easement

08/15/18 06:05:04AM H:\Fargo\JBN\6000\6059\18_6059_145 - 52nd Ave. Design\CAD\Plans\090--PAVEMENT JOINTING LAYOUT.dwg

	STATE	PROJECT NO.	SECTION NO.	SHEET NO.
	ND	SU-8-984(164)	90	12



- #4 DEFORMED TIE BAR
- ===== DOWELED JOINT
- R REINFORCED PANELS
- [Pattern] IMPRESSIONED CONCRETE
- [Pattern] 5" SIDEWALK
- [Pattern] 6" SIDEWALK
- [Pattern] MEDIAN NOSE
- [Pattern] 10" ASPHALT PAVEMENT

- NOTE:
1. ALL CONCRETE PAVEMENT JOINTS ADJACENT TO EXISTING CONCRETE SHALL MATCH THE EXISTING JOINT PATTERN.
 2. ALL CONCRETE PAVEMENT SHALL BE DOWELED WITH REINFORCED PANELS AT UTILITY CROSSINGS. REINFORCED PANELS SHALL NOT BE PAID FOR SEPARATELY BUT INCLUDED IN THE PRICE BID FOR 10" NON-REINF. CONC. PVMT CL AE-DOWELED.
 3. ALL MANHOLE CASTINGS WITHIN THE CONCRETE PAVEMENT SHALL BE FLOATING CASTING R-1955-1. ALL COSTS FOR THE FLOATING CASTING SHALL BE INCLUDED IN THE PRICE OF EACH STRUCTURE.
 4. POUR CURB & GUTTER SEPARATE FROM ADJACENT CONCRETE PAVEMENT.
 5. INSTALL MH CASTINGS WITH PAVING OPERATION OR INSTALL WITH EACH ADJOINING FULL CONCRETE PANEL. MH ISOLATION OR BOX OUTS WILL NOT BE ALLOWED.



THE CITY OF
Fargo
FAR MORE



Proj. No. 6059-0145
Houston
Engineering Inc.
Ph: 701.237.5065

ALL ELEVATIONS ARE BASED ON
THE U.S.G.S. VERTICAL DATUM OF 1988.
(UNLESS NOTED OTHERWISE)

This document was originally issued and sealed by
Adam M. Ruud
Registration Number 10407
on 8/15/18 and the original document is stored in the Engineering Dept. at City Hall.

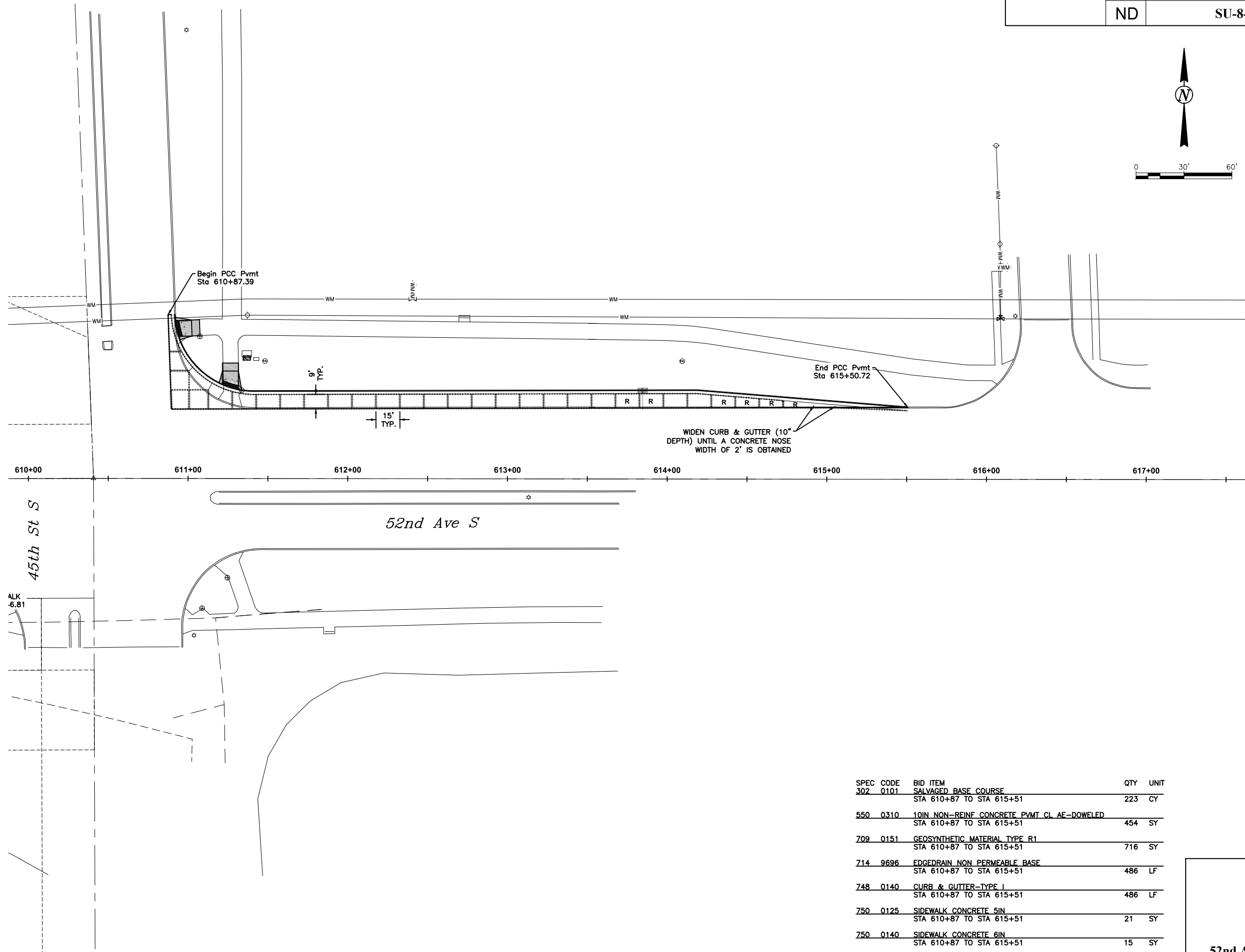
SPEC CODE	BID ITEM	QTY	UNIT
302 0101	SALVAGED BASE COURSE STA 602+50 TO STA 609+33	2457	CY
550 0310	10IN NON-REINF CONCRETE PVMT CL AE-DOWELED STA 602+50 TO STA 609+33	5441	SY
709 0151	GEOSYNTHETIC MATERIAL TYPE R1 STA 602+50 TO STA 609+33	6995	SY
714 9696	EDGEDRAIN NON PERMEABLE BASE STA 602+50 TO STA 609+33	1983	LF
748 0140	CURB & GUTTER-TYPE I STA 602+50 TO STA 609+33	2733	LF
750 0030	PIGMENTED IMPRINTED CONCRETE STA 602+50 TO STA 609+33	372	SY
750 0125	SIDEWALK CONCRETE 5IN STA 602+50 TO STA 609+33	789	SY
750 1000	DRIVEWAY CONCRETE STA 602+50 TO STA 609+33	126	SY
990 0400	PIPE CLEANOUT STA 602+50 TO STA 608+33	2	EA

Paving Layouts

52nd Ave S - West of 63rd St S to 45th St S

H:\Fargo\IBN\6000\6059\18_6059_145 - 52nd Ave. Design\CAD\Plans\090--PAVEMENT JOINTING LAYOUT.dwg 08/15/18 06:05:14AM

STATE	PROJECT NO.	SECTION NO.	SHEET NO.
ND	SU-8-984(164)	90	13



- #4 DEFORMED TIE BAR
- ===== DOWELED JOINT
- R REINFORCED PANELS
- IMPRESSED CONCRETE
- 5" SIDEWALK
- 6" SIDEWALK
- MEDIAN NOSE
- 10" ASPHALT PAVEMENT

- NOTE:
- ALL CONCRETE PAVEMENT JOINTS ADJACENT TO EXISTING CONCRETE SHALL MATCH THE EXISTING JOINT PATTERN.
 - ALL CONCRETE PAVEMENT SHALL BE DOWELED WITH REINFORCED PANELS AT UTILITY CROSSINGS. REINFORCED PANELS SHALL NOT BE PAID FOR SEPARATELY BUT INCLUDED IN THE PRICE BID FOR 10" NON-REINF. CONC. PVMT CL AE-DOWELED.
 - ALL MANHOLE CASTINGS WITHIN THE CONCRETE PAVEMENT SHALL BE FLOATING CASTING R-1955-1. ALL COSTS FOR THE FLOATING CASTING SHALL BE INCLUDED IN THE PRICE OF EACH STRUCTURE.
 - POUR CURB & GUTTER SEPARATE FROM ADJACENT CONCRETE PAVEMENT.
 - INSTALL MH CASTINGS WITH PAVING OPERATION OR INSTALL WITH EACH ADJOINING FULL CONCRETE PANEL. MH ISOLATION OR BOX OUTS WILL NOT BE ALLOWED.

Fargo
FAR MORE

Proj. No. 6059-0145
Houston
Engineering Inc.
Ph: 701.237.5065

ALL ELEVATIONS ARE BASED ON
THE U.S.G.S. VERTICAL DATUM OF 1988.
(UNLESS NOTED OTHERWISE)

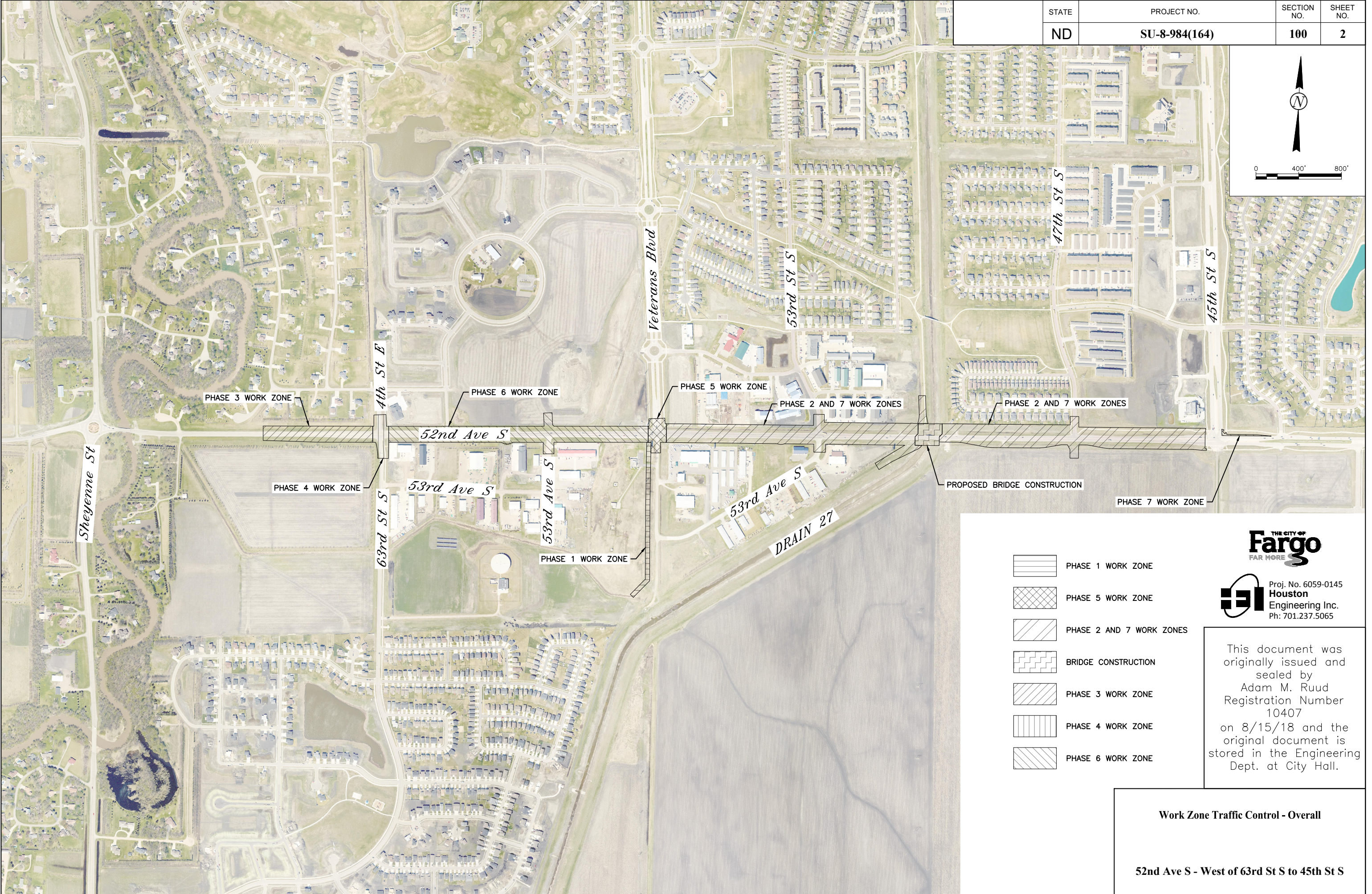
This document was
originally issued and
sealed by
Adam M. Ruud
Registration Number
10407
on 8/15/18 and the
original document is
stored in the Engineering
Dept. at City Hall.

Paving Layouts

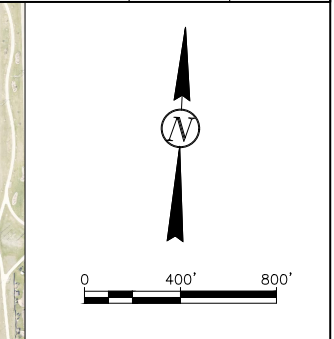
52nd Ave S - West of 63rd St S to 45th St S

SPEC CODE	BID ITEM	QTY	UNIT
302 0101	SALVAGED BASE COURSE		
	STA 610+87 TO STA 615+51	223	CY
550 0310	10IN NON-REINF CONCRETE PVMT CL AE-DOWELED		
	STA 610+87 TO STA 615+51	454	SY
709 0151	GEOSYNTHETIC MATERIAL TYPE R1		
	STA 610+87 TO STA 615+51	716	SY
714 9696	EDGEDRAIN NON PERMEABLE BASE		
	STA 610+87 TO STA 615+51	486	LF
748 0140	CURB & GUTTER-TYPE I		
	STA 610+87 TO STA 615+51	486	LF
750 0125	SIDEWALK CONCRETE 5IN		
	STA 610+87 TO STA 615+51	21	SY
750 0140	SIDEWALK CONCRETE 6IN		
	STA 610+87 TO STA 615+51	15	SY
750 2115	DECTABLE WARNING PANELS		
	STA 610+87 TO STA 615+51	41	SF

08/15/18 06:08:32AM H:\Fargo\JBN\6000\6059\18_6059_145 - 52nd Ave. Design\CAD\Plans\100-Traffic Control_Overall.dwg



	STATE	PROJECT NO.	SECTION NO.	SHEET NO.
	ND	SU-8-984(164)	100	2



- PHASE 1 WORK ZONE
- PHASE 5 WORK ZONE
- PHASE 2 AND 7 WORK ZONES
- BRIDGE CONSTRUCTION
- PHASE 3 WORK ZONE
- PHASE 4 WORK ZONE
- PHASE 6 WORK ZONE



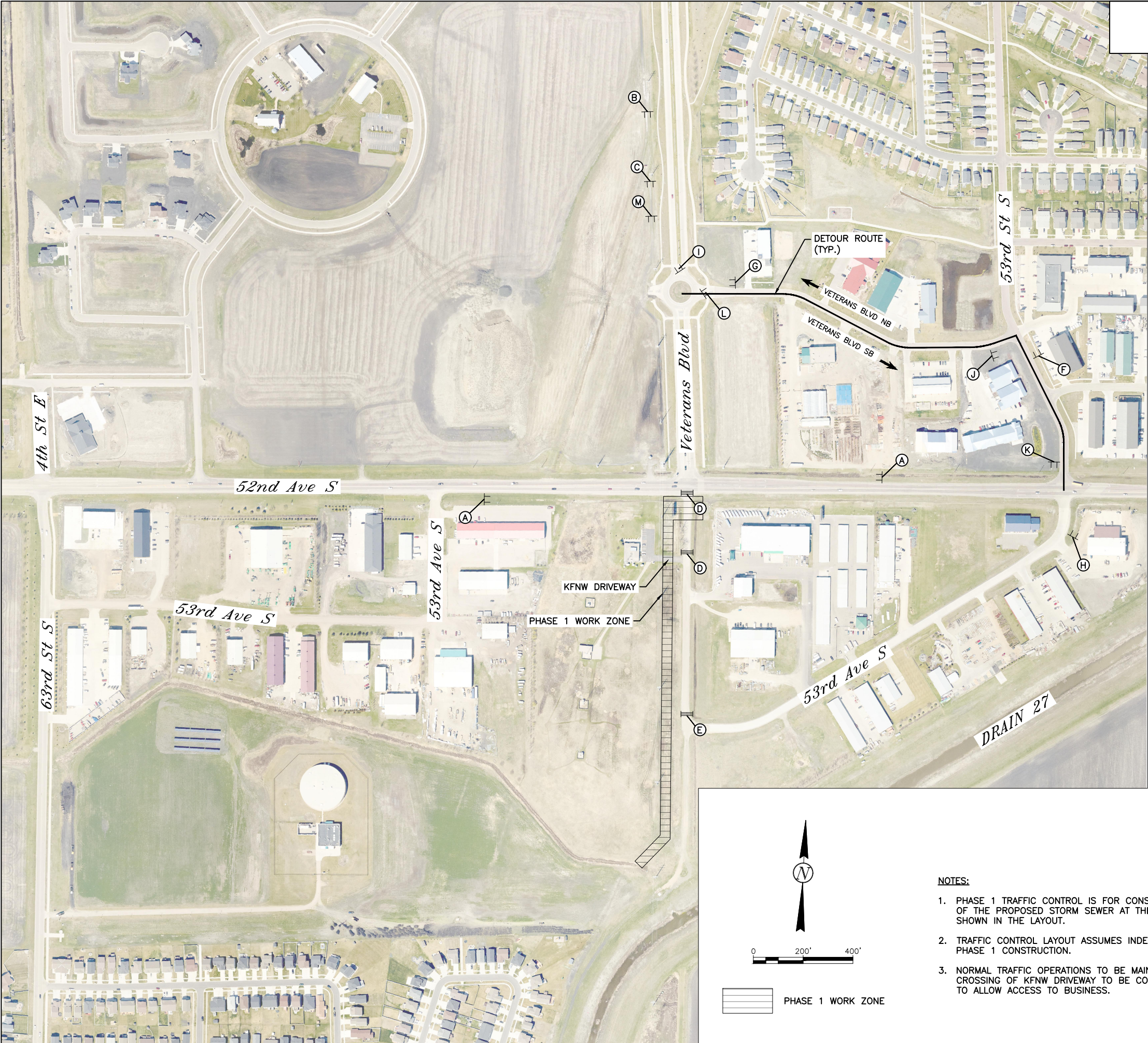
Proj. No. 6059-0145
Houston
Engineering Inc.
Ph: 701.237.5065

This document was originally issued and sealed by
Adam M. Ruud
Registration Number 10407
on 8/15/18 and the original document is stored in the Engineering Dept. at City Hall.

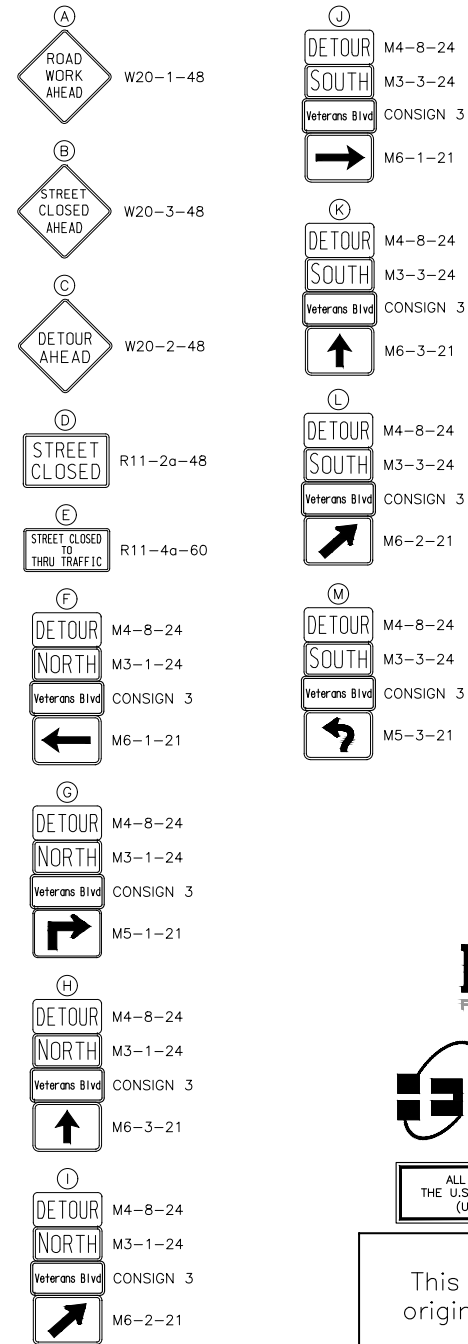
Work Zone Traffic Control - Overall

52nd Ave S - West of 63rd St S to 45th St S

08/15/18 06:09:09AM H:\Fargo\JBN\6000\6059\18_6059_145 - 52nd Ave. Design\CAD\Plans\100-Traffic Control_Phase 1.dwg



STATE	PROJECT NO.	SECTION NO.	SHEET NO.
ND	SU-8-984(164)	100	3



Proj. No. 6059-0145
Houston
Engineering Inc.
Ph: 701.237.5065



ALL ELEVATIONS ARE BASED ON
THE U.S.G.S. VERTICAL DATUM OF 1988.
(UNLESS NOTED OTHERWISE)

This document was originally issued and sealed by
Adam M. Ruud
Registration Number 10407
on 8/15/18 and the original document is stored in the Engineering Dept. at City Hall.

Work Zone Traffic Control - Phase 1

52nd Ave S - West of 63rd St S to 45th St S

- NOTES:**
1. PHASE 1 TRAFFIC CONTROL IS FOR CONSTRUCTION OF THE PROPOSED STORM SEWER AT THE LOCATION SHOWN IN THE LAYOUT.
 2. TRAFFIC CONTROL LAYOUT ASSUMES INDEPENDENT PHASE 1 CONSTRUCTION.
 3. NORMAL TRAFFIC OPERATIONS TO BE MAINTAINED. CROSSING OF KFNW DRIVEWAY TO BE COORDINATED TO ALLOW ACCESS TO BUSINESS.

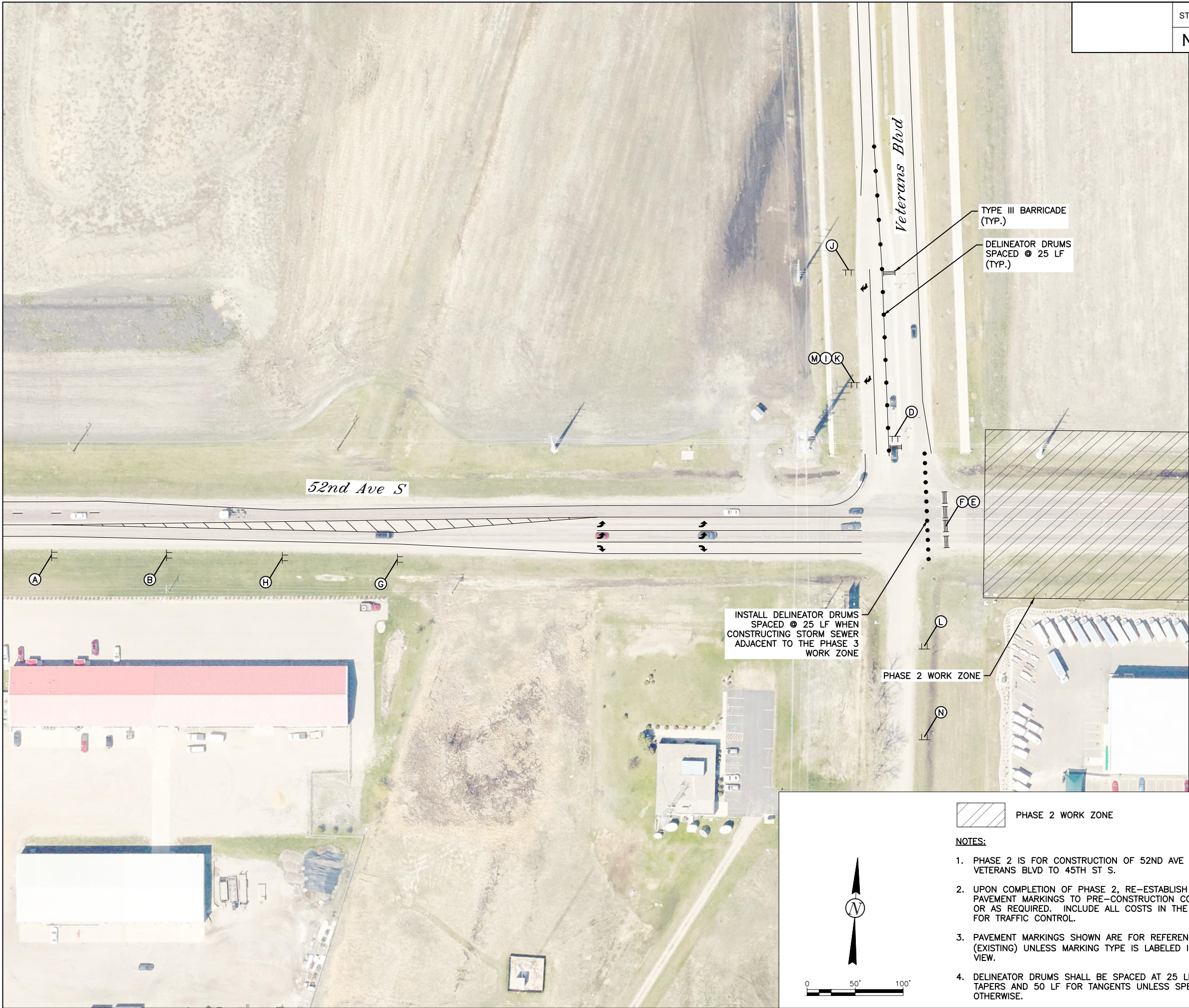
STATE	PROJECT NO.		SECTION NO.	SHEET NO.
ND	SU-8-984(164)		100	4
<div> <div>I</div> <div>DETOUR</div> <div>EAST</div> <div>52nd Ave S</div> <div>→</div> </div> <div> M4-8-24 M3-2-24 CONSIGN 1 M6-1-21 </div>	<div> <div>R</div> <div>DETOUR</div> <div>WEST</div> <div>52nd Ave S</div> <div>↑</div> </div> <div> M4-8-24 M3-4-24 CONSIGN 1 M6-3-21 </div>	<div> <div>Z</div> <div>DETOUR</div> <div>NORTH</div> <div>Veterans Blvd</div> <div>→</div> </div> <div> M4-8-24 M3-1-24 CONSIGN 3 M6-1-21 </div>	<div> <div>FF</div> <div>DETOUR</div> <div>SOUTH</div> <div>53rd St S</div> <div>←</div> </div> <div> M4-8-24 M3-3-24 CONSIGN 4 M6-1-21 </div>	
<div> <div>J</div> <div>DETOUR</div> <div>EAST</div> <div>52nd Ave S</div> <div>↪</div> </div> <div> M4-8-24 M3-2-24 CONSIGN 1 M5-1-21 </div>	<div> <div>S</div> <div>DETOUR</div> <div>WEST</div> <div>52nd Ave S</div> <div>↗</div> </div> <div> M4-8-24 M3-4-24 CONSIGN 1 M6-2-21 </div>	<div> <div>AA</div> <div>DETOUR</div> <div>NORTH</div> <div>53rd St S</div> <div>←</div> </div> <div> M4-8-24 M3-1-24 CONSIGN 4 M6-1-21 </div>	<div> <div>GG</div> <div>DETOUR</div> <div>SOUTH</div> <div>53rd St S</div> <div>→</div> </div> <div> M4-8-24 M3-3-24 CONSIGN 4 M6-1-21 </div>	
<div> <div>K</div> <div>DETOUR</div> <div>EAST</div> <div>52nd Ave S</div> <div>↑</div> </div> <div> M4-8-24 M3-2-24 CONSIGN 1 M6-3-21 </div>	<div> <div>T</div> <div>DETOUR</div> <div>WEST</div> <div>52nd Ave S</div> <div>↶</div> </div> <div> M4-8-24 M3-4-24 CONSIGN 1 M5-3-21 </div>	<div> <div>BB</div> <div>DETOUR</div> <div>NORTH</div> <div>53rd St S</div> <div>→</div> </div> <div> M4-8-24 M3-1-24 CONSIGN 4 M6-1-21 </div>	<div> <div>HH</div> <div>DETOUR</div> <div>SOUTH</div> <div>53rd St S</div> <div>↑</div> </div> <div> M4-8-24 M3-3-24 CONSIGN 4 M6-3-21 </div>	
<div> <div>L</div> <div>DETOUR</div> <div>EAST</div> <div>52nd Ave S</div> <div>↗</div> </div> <div> M4-8-24 M3-2-24 CONSIGN 1 M6-2-21 </div>	<div> <div>U</div> <div>DETOUR</div> <div>SOUTH</div> <div>63rd St S</div> <div>←</div> </div> <div> M4-8-24 M3-3-24 CONSIGN 2 M6-1-21 </div>	<div> <div>CC</div> <div>DETOUR</div> <div>NORTH</div> <div>53rd St S</div> <div>↪</div> </div> <div> M4-8-24 M3-1-24 CONSIGN 4 M5-1-21 </div>	<div> <div>II</div> <div>DETOUR</div> <div>SOUTH</div> <div>53rd St S</div> <div>↗</div> </div> <div> M4-8-24 M3-3-24 CONSIGN 4 M6-2-21 </div>	
<div> <div>M</div> <div>DETOUR</div> <div>EAST</div> <div>52nd Ave S</div> <div>↶</div> </div> <div> M4-8-24 M3-2-24 CONSIGN 1 M5-3-21 </div>	<div> <div>V</div> <div>DETOUR</div> <div>SOUTH</div> <div>63rd St S</div> <div>→</div> </div> <div> M4-8-24 M3-3-24 CONSIGN 2 M6-1-21 </div>	<div> <div>DD</div> <div>DETOUR</div> <div>NORTH</div> <div>53rd St S</div> <div>↑</div> </div> <div> M4-8-24 M3-1-24 CONSIGN 4 M6-3-21 </div>	<div> <div>JJ</div> <div>DETOUR</div> <div>SOUTH</div> <div>53rd St S</div> <div>↶</div> </div> <div> M4-8-24 M3-3-24 CONSIGN 4 M5-3-21 </div>	
<div> <div>N</div> <div>DETOUR</div> <div>WEST</div> <div>52nd Ave S</div> <div>←</div> </div> <div> M4-8-24 M3-4-24 CONSIGN 1 M6-1-21 </div>	<div> <div>W</div> <div>DETOUR</div> <div>SOUTH</div> <div>63rd St S</div> <div>↑</div> </div> <div> M4-8-24 M3-3-24 CONSIGN 2 M6-3-21 </div>	<div> <div>EE</div> <div>DETOUR</div> <div>NORTH</div> <div>53rd St S</div> <div>↗</div> </div> <div> M4-8-24 M3-1-24 CONSIGN 4 M6-2-21 </div>	<div> <div>KK</div> <div>SIDEWALK CLOSED</div> </div> <div> R9-9-24 </div>	
<div> <div>O</div> <div>DETOUR</div> <div>WEST</div> <div>52nd Ave S</div> <div>↶</div> </div> <div> M4-8-24 M3-4-24 CONSIGN 1 M5-1-21 </div>	<div> <div>X</div> <div>DETOUR</div> <div>SOUTH</div> <div>63rd St S</div> <div>↗</div> </div> <div> M4-8-24 M3-3-24 CONSIGN 2 M6-2-21 </div>		<div>  <p>THE CITY OF Fargo FAR MORE</p> </div>	
<div> <div>P</div> <div>DETOUR</div> <div>WEST</div> <div>52nd Ave S</div> <div>→</div> </div> <div> M4-8-24 M3-4-24 CONSIGN 1 M6-1-21 </div>	<div> <div>Y</div> <div>DETOUR</div> <div>NORTH</div> <div>Veterans Blvd</div> <div>←</div> </div> <div> M4-8-24 M3-1-24 CONSIGN 3 M6-1-21 </div>		<div>  <p>Proj. No. 6059-0145 Houston Engineering Inc. Ph: 701.237.5065</p> </div>	
<div> <div>Q</div> <div>DETOUR</div> <div>WEST</div> <div>52nd Ave S</div> <div>↪</div> </div> <div> M4-8-24 M3-4-24 CONSIGN 1 M5-1-21 </div>				

This document was originally issued and sealed by
Adam M. Ruud
Registration Number 10407
on 8/15/18 and the original document is stored in the Engineering Dept. at City Hall.

Work Zone Traffic Control - Phase 2

52nd Ave S - West of 63rd St S to 45th St S

08/15/18 06:10:45AM H:\Fargo\JBN\6000\6059\18_6059_145 - 52nd Ave. Design\CAD\Plans\100-Traffic Control_Phase 3 Detailed.dwg



STATE	PROJECT NO.	SECTION NO.	SHEET NO.
ND	SU-8-984(164)	100	5

A

STREET
CLOSED
AHEAD

W20-3-48

B

DETOUR
AHEAD

W20-2-48

C

DETOUR

WEST

52nd Ave S

W12-1-30

D

DETOUR

SOUTH

63rd St S

R3-2-24

E

STREET
CLOSED

R11-2a-48

F

DETOUR

M4-10-48

G

DETOUR

EAST

52nd Ave S

M4-8-24
M3-2-24
CONSIGN 1
M6-1-21

H

DETOUR

EAST

52nd Ave S

M4-8-24
M3-2-24
CONSIGN 1
M5-1-21

I

DETOUR

WEST

52nd Ave S

M4-8-24
M3-4-24
CONSIGN 1
M6-1-21

J

DETOUR

WEST

52nd Ave S

M4-8-24
M3-4-24
CONSIGN 1
M5-1-21

K

DETOUR

SOUTH

63rd St S

M4-8-24
M3-3-24
CONSIGN 2
M6-1-21

L

DETOUR

NORTH

53rd St S

M4-8-24
M3-1-24
CONSIGN 4
M6-3-21

M

DETOUR

SOUTH

53rd St S

M4-8-24
M3-3-24
CONSIGN 4
M6-3-21

N

DETOUR

WEST

52nd Ave S

M4-8-24
M3-4-24
CONSIGN 1
M6-1-21

R3-1-24



Proj. No. 6059-0145
Houston
Engineering Inc.
Ph: 701.237.5065

This document was originally issued and sealed by
Adam M. Ruud
Registration Number 10407
on 8/15/18 and the original document is stored in the Engineering Dept. at City Hall.

Work Zone Traffic Control - Phase 2

52nd Ave S - West of 63rd St S to 45th St S

 PHASE 2 WORK ZONE

NOTES:

1. PHASE 2 IS FOR CONSTRUCTION OF 52ND AVE S FROM VETERANS BLVD TO 45TH ST S.
2. UPON COMPLETION OF PHASE 2, RE-ESTABLISH EXISTING PAVEMENT MARKINGS TO PRE-CONSTRUCTION CONDITIONS OR AS REQUIRED. INCLUDE ALL COSTS IN THE BID PRICE FOR TRAFFIC CONTROL.
3. PAVEMENT MARKINGS SHOWN ARE FOR REFERENCE ONLY (EXISTING) UNLESS MARKING TYPE IS LABELED IN THE PLAN VIEW.
4. DELINEATOR DRUMS SHALL BE SPACED AT 25 LF FOR TAPERS AND 50 LF FOR TANGENTS UNLESS SPECIFIED OTHERWISE.

<p>(M)</p> <p>DETOUR EAST 52nd Ave S CONSIGN 1</p> <p>M4-8-24 M3-2-24 CONSIGN 1 M5-3-21</p>	<p>(V)</p> <p>DETOUR NORTH 63rd St S CONSIGN 2</p> <p>M4-8-24 M3-1-24 CONSIGN 2 M5-1-21</p>	<p>(CC)</p> <p>DETOUR NORTH Veterans Blvd CONSIGN 3</p> <p>M4-8-24 M3-1-24 CONSIGN 3 M6-1-21</p>
<p>(N)</p> <p>DETOUR WEST 52nd Ave S CONSIGN 1</p> <p>M4-8-24 M3-4-24 CONSIGN 1 M6-1-21</p>	<p>(W)</p> <p>DETOUR SOUTH 63rd St S CONSIGN 2</p> <p>M4-8-24 M3-3-24 CONSIGN 2 M6-1-21</p>	<p>(DD)</p> <p>DETOUR NORTH Veterans Blvd CONSIGN 3</p> <p>M4-8-24 M3-1-24 CONSIGN 3 M6-3-21</p>
<p>(O)</p> <p>DETOUR WEST 52nd Ave S CONSIGN 1</p> <p>M4-8-24 M3-4-24 CONSIGN 1 M5-1-21</p>	<p>(X)</p> <p>DETOUR SOUTH 63rd St S CONSIGN 2</p> <p>M4-8-24 M3-3-24 CONSIGN 2 M6-1-21</p>	<p>(EE)</p> <p>DETOUR NORTH Veterans Blvd CONSIGN 3</p> <p>M4-8-24 M3-1-24 CONSIGN 3 M6-2-21</p>
<p>(P)</p> <p>DETOUR WEST 52nd Ave S CONSIGN 1</p> <p>M4-8-24 M3-4-24 CONSIGN 1 M6-1-21</p>	<p>(Y)</p> <p>DETOUR SOUTH 63rd St S CONSIGN 2</p> <p>M4-8-24 M3-3-24 CONSIGN 2 M5-1-21</p>	<p>(FF)</p> <p>DETOUR NORTH Veterans Blvd CONSIGN 3</p> <p>M4-8-24 M3-1-24 CONSIGN 3 M5-3-21</p>
<p>(Q)</p> <p>DETOUR WEST 52nd Ave S CONSIGN 1</p> <p>M4-8-24 M3-4-24 CONSIGN 1 M5-1-21</p>	<p>(Z)</p> <p>DETOUR SOUTH 63rd St S CONSIGN 2</p> <p>M4-8-24 M3-3-24 CONSIGN 2 M6-3-21</p>	<p>(GG)</p> <p>DETOUR SOUTH 63rd St S CONSIGN 2</p> <p>M4-8-24 M3-3-24 CONSIGN 2 M6-3-21</p>
<p>(R)</p> <p>DETOUR WEST 52nd Ave S CONSIGN 1</p> <p>M4-8-24 M3-4-24 CONSIGN 1 M6-3-21</p>	<p>(AA)</p> <p>DETOUR SOUTH 63rd St S CONSIGN 2</p> <p>M4-8-24 M3-3-24 CONSIGN 2 M6-2-21</p>	<p>(BB)</p> <p>DETOUR NORTH Veterans Blvd CONSIGN 3</p> <p>M4-8-24 M3-1-24 CONSIGN 3 M6-1-21</p>
<p>(S)</p> <p>DETOUR WEST 52nd Ave S CONSIGN 1</p> <p>M4-8-24 M3-4-24 CONSIGN 1 M6-2-21</p>	<p>(T)</p> <p>DETOUR WEST 52nd Ave S CONSIGN 1</p> <p>M4-8-24 M3-4-24 CONSIGN 1 M5-3-21</p>	<p>(U)</p> <p>DETOUR NORTH 63rd St S CONSIGN 2</p> <p>M4-8-24 M3-1-24 CONSIGN 2 M6-1-21</p>

THE CITY OF
Fargo
FAR MORE

 Proj. No. 6059-0145
Houston
Engineering Inc.
Ph: 701.237.5065

This document was
originally issued and
sealed by
Adam M. Ruud
Registration Number
10407
on 8/15/18 and the
original document is
stored in the Engineering
Dept. at City Hall.

52nd Ave S - West of 63rd St S to 45th St S