

# North Dakota Department of Transportation

Thomas K. Sorel  
*Director*

Doug Burgum  
*Governor*

November 15, 2017

## ADDENDUM 2 – JOB 37

TO: All prospective bidders on projects NH-3-001(027)161 (PCN 21667), NH-6-002(122)295 (PCN 21341) and NH-6-002(123)295 (PCN 21346), Job No. 37 scheduled for the November 17, 2017 bid opening.

The following plan and request for proposal revisions shall be made:

### Plan Revisions for NH-6-002(122)295

**Remove and replace sheets 6-1, 6-2, 6-3, 8-1, 20-6, 60-1 and 60-15 with revised sheets dated 11/13/2017 and 10/14/2017.**

#### Section 6 Sheets 1-3:

Added Notes 202-P02 and 550-P06

#### Section 8 Sheet 1:

Decrease bid item 202 0021 from 3,296 to 1,625 TON  
Removed bid item 203 0101

#### Section 20 Sheet 6:

Added sheet

#### Section 60 Sheet 1 and 15:

Change the quantity of 202 0021 REMOVE AGGREGATE BASE AND SURFACING

### Request for Proposal Revisions:

**Remove and replace pages 5, 6, 7, 8 and 9 of 11 with the enclosed pages revised 11/15/2017.**

The following changes were made to the Bid Items:

Spec No.	Code No.	Description	Description of Change
202	0021	REMOVE AGGREGATE BASE AND SURFACING	Decreased from 3,296 to 1,625 TON
203	0101	COMMON EXCAVATION-TYPE A	Removed Bid Item

Addendum 2

Job 37, November 17, 2017 Bid Opening

Page 2 of 2

This addendum is to be incorporated into the bidder's proposal for this project.

Project Bids files should be updated by downloading the addendum file from the Bid Express on-line bidding exchange at <http://www.bidx.com/> and load it into the AASHTOWare Project Bids program.



for

PHILLIP MURDOFF – CONSTRUCTION SERVICES ENGINEER

80:jwj

Enclosure

**BID ITEMS**

**Projects: NH-3-001(027)161 (PCN-21667), NH-6-002(122)295 (PCN-21341), and NH-6-002(123)295 (PCN-21346)**

**Bidder must type or neatly print unit prices in numerals, make extensions for each item, and total. Do not carry unit prices further than three (3) decimal places.**

Item No.	Spec No.	Code No.	Description	Unit	Approx. Quantity	Unit Price		Amount	
						\$\$\$\$	000	\$\$\$\$	00
001	103	0100	CONTRACT BOND	L SUM	1.				
002	202	0021	REMOVE AGGREGATE BASE & SURFACING	TON	1,625.				
003	202	0350	REMOVAL OF TEMPORARY BYPASS	EA	3.				
004	203	0103	COMMON EXCAVATION-TYPE C	CY	383.				
005	203	0109	TOPSOIL	CY	1,122.				
006	203	0119	TOPSOIL-IMPORTED	CY	112.				
007	203	0140	BORROW-EXCAVATION	CY	5,515.				
008	216	0100	WATER	M GAL	170.				
009	230	0125	SHOULDER PREPARATION	MILE	1.880				
010	230	0302	SUBGRADE PREPARATION-TYPE A-SHOULDERS	STA	40.				
011	251	0200	SEEDING CLASS II	ACRE	1.500				
012	251	2000	TEMPORARY COVER CROP	ACRE	.800				
013	253	0101	STRAW MULCH	ACRE	2.300				
014	261	0112	FIBER ROLLS 12IN	LF	5,625.				
015	261	0113	REMOVE FIBER ROLLS 12IN	LF	1,880.				
016	302	0100	SALVAGED BASE COURSE	TON	348.				

**BID ITEMS**

Projects: NH-3-001(027)161 (PCN-21667), NH-6-002(122)295 (PCN-21341), and NH-6-002(123)295 (PCN-21346)

**Bidder must type or neatly print unit prices in numerals, make extensions for each item, and total. Do not carry unit prices further than three (3) decimal places.**

Item No.	Spec No.	Code No.	Description	Unit	Approx. Quantity	Unit Price		Amount	
						\$\$\$\$	000	\$\$\$\$	00
017	302	0120	AGGREGATE BASE COURSE CL 5	TON	1,356.				
018	401	0050	TACK COAT	GAL	2,385.				
019	401	0060	PRIME COAT	GAL	875.				
020	401	0070	FOG SEAL	GAL	663.				
021	411	0105	MILLING PAVEMENT SURFACE	SY	106,691.				
022	411	0132	RELAYING MILLED MATERIAL	TON	10,438.				
023	430	0045	SUPERPAVE FAA 45	TON	4,956.				
024	430	1000	CORED SAMPLE	EA	21.				
025	430	5828	PG 58-28 ASPHALT CEMENT	TON	297.400				
026	550	0355	CONCRETE OVERLAY	CY	14,695.				
027	550	0365	CONCRETE PLACEMENT - DOWELED	SY	71,934.				
028	570	0210	PCC PAVEMENT GRINDING	SY	41,495.				
029	570	0240	DOWELED CONTRACTION JOINT ASSEMBLY	LF	342.				
030	570	0713	8IN CONCRETE PAVEMENT REPAIR-FULL DEPTH-DOWELED	SY	1,367.				
031	570	0963	TRANSVERSE PCC JOINT CLEANING & SEALING	LF	54,050.				
032	570	0965	LONGITUDINAL PCC JOINT CLEANING & SEALING	LF	26,611.				

**BID ITEMS**

Projects: NH-3-001(027)161 (PCN-21667), NH-6-002(122)295 (PCN-21341), and NH-6-002(123)295 (PCN-21346)

**Bidder must type or neatly print unit prices in numerals, make extensions for each item, and total. Do not carry unit prices further than three (3) decimal places.**

Item No.	Spec No.	Code No.	Description	Unit	Approx. Quantity	Unit Price		Amount	
						\$\$\$\$	000	\$\$\$\$	00
033	570	0966	RANDOM PCC CRACK CLEANING & SEALING	LF	2,975.				
034	570	1512	SPALL REPAIR-PARTIAL DEPTH	SF	2,090.				
035	702	0100	MOBILIZATION	L SUM	1.				
036	704	0100	FLAGGING	MHR	1,240.				
037	704	1000	TRAFFIC CONTROL SIGNS	UNIT	11,287.				
038	704	1041	ATTENUATION DEVICE-TYPE B-55	EA	2.				
039	704	1050	TYPE I BARRICADE	EA	30.				
040	704	1052	TYPE III BARRICADE	EA	169.				
041	704	1060	DELINEATOR DRUMS	EA	97.				
042	704	1067	TUBULAR MARKERS	EA	167.				
043	704	1072	FLEXIBLE DELINEATORS	EA	504.				
044	704	1080	STACKABLE VERTICAL PANELS	EA	11.				
045	704	1087	SEQUENCING ARROW PANEL-TYPE C	EA	4.				
046	704	1088	SEQUENCING ARROW PANEL-TYPE C-CROSSOVER	EA	2.				
047	704	1185	PILOT CAR	HR	100.				
048	704	1500	OBLITERATION OF PAVEMENT MARKING	SF	4,963.				

**BID ITEMS**

Projects: NH-3-001(027)161 (PCN-21667), NH-6-002(122)295 (PCN-21341), and NH-6-002(123)295 (PCN-21346)

**Bidder must type or neatly print unit prices in numerals, make extensions for each item, and total. Do not carry unit prices further than three (3) decimal places.**

Item No.	Spec No.	Code No.	Description	Unit	Approx. Quantity	Unit Price		Amount	
						\$\$\$\$	000	\$\$\$\$	00
049	704	3510	PRECAST CONCRETE MED BARRIER-STATE FURNISHED	EA	80.				
050	706	0400	FIELD OFFICE	EA	1.				
051	706	0500	AGGREGATE LABORATORY	EA	1.				
052	706	0550	BITUMINOUS LABORATORY	EA	1.				
053	706	0600	CONTRACTOR'S LABORATORY	EA	1.				
054	709	0151	GEOSYNTHETIC MATERIAL TYPE R1	SY	3,278.				
055	714	7036	PIPE PVC 18IN	LF	704.				
056	754	0112	FLAT SHEET FOR SIGNS-TYPE IV REFL SHEETING	SF	14.				
057	754	0206	STEEL GALV POSTS-TELESCOPING PERFORATED TUBE	LF	215.				
058	754	0592	RESET SIGN PANEL	EA	4.				
059	760	0001	RUMBLE STRIPS - CONCRETE SHOULDER	MILE	9.638				
060	760	0005	RUMBLE STRIPS - ASPHALT SHOULDER	MILE	1.880				
061	760	0007	RUMBLE STRIPS - ASPHALT CENTERLINE	MILE	.940				
062	760	0010	RUMBLE STRIPS - INTERSECTION	SET	1.				
063	762	0103	PVMT MK PAINTED-MESSAGE	SF	52.				
064	762	0110	EPOXY PVMT MK 4IN LINE-GROOVED	LF	13,213.				

**BID ITEMS**

Projects: NH-3-001(027)161 (PCN-21667), NH-6-002(122)295 (PCN-21341), and NH-6-002(123)295 (PCN-21346)

**Bidder must type or neatly print unit prices in numerals, make extensions for each item, and total. Do not carry unit prices further than three (3) decimal places.**

Item No.	Spec No.	Code No.	Description	Unit	Approx. Quantity	Unit Price		Amount	
						\$\$\$\$	000	\$\$\$\$	00
065	762	0112	EPOXY PVT MK MESSAGE	SF	96.				
066	762	0113	EPOXY PVT MK 4IN LINE	LF	154,069.				
067	762	0115	EPOXY PVT MK 8IN LINE	LF	2,270.				
068	762	0117	EPOXY PVT MK 24IN LINE	LF	65.				
069	762	0200	RAISED PAVEMENT MARKERS	EA	21,309.				
070	762	0430	SHORT TERM 4IN LINE-TYPE NR	LF	32,587.				
071	762	1104	PVT MK PAINTED 4IN LINE	LF	12,321.				
072	766	0100	MAILBOX-ALL TYPES	EA	3.				
073	772	2110	FLASHING BEACON-POST MOUNTED	EA	2.				
074	772	2935	REVISE FLASHING BEACON SYSTEM	EA	1.				
			<b>TOTAL SUM BID</b>						

NOTES

Revised 11/14/2017

STATE	PROJECT NO.	SECTION NO.	SHEET NO.
ND	NH-6-002(122)295	6	1

- 107-P01 MAINTAINING TRAFFIC –DROP-OFFS: If, at the end of the work-day, drop-offs greater than 2 inches and less than 18 inches or slopes steeper than 4:1 exist between the edge of a traffic lane and the outside edge of the proposed roadway, perform one of the following actions:
- Construct a traversable wedge in the area of the drop-off or steep slope; or
  - Close the lane adjacent to the drop-off or steep slope and provide 24-hour flagging or pilot car operations.
- When constructing a wedge, construct a wedge composed of aggregate or earthen materials with a 4:1 or flatter slope along the entire length of the area. Compact materials using Type C compaction, as specified in 203.04 E.4, “Compaction Control Type C”.
- Install stackable vertical panels that meet the requirements of Section 704.03 H, “Stackable Vertical Panels”, along the edge of the driving lane closest to the wedge.
- The Engineer will measure stackable vertical panels as specified in Section 704.05, “Method of Measurement” and will pay for panels as specified in Section 704.06, “Basis of Payment”.
- The Engineer will not measure material used to construct the wedge. Include the cost of materials, equipment, labor, and incidentals required for this operation in the price bid for “Aggregate Base CL 5.
- If a 4:1 or flatter wedge is not installed, provide 24 hour flagging or pilot car operations and associated traffic control at no additional cost to the Department.
- The requirements of Section 704.04 O, “Traffic Control for Uneven Pavement” apply to drop-offs created by milling or the placement of hot mix asphalt.
- 202-P01 MEDIAN APPROACH REMOVAL: Remove the median crossing adjacent to the west crossover. Engineer will measure the removal as “Removal of Temporary Bypass”.
- 202-P02 REMOVAL OF TEMPORARY BYPASS: Obtain approval from the Engineer before removing a temporary bypass. Restore the area impacted by the construction, and removal of the crossovers to its original condition; shape the median slopes to a 6:1 slope, seed and mulch. Include all costs associated with the removal of the asphalt surfacing, aggregate, geosynthetic material, topsoil on the crossover and pipe in the contract unit price for “Removal of Temporary Bypass”.
- 203-P01 SHRINKAGE: 25 percent additional volume is included for shrinkage in earth embankment.
- 230-P01 SUBGRADE PREPARATION: Complete subgrade preparation – type A shoulders to a depth of 12 inches.

- 261-P01 PERMANENT FIBER ROLLS: If fiber rolls are to remain on the project, use fiber rolls that are composed of netting that meets either of the following:
- Plastic or natural fiber photodegradable netting that has a life expectancy between 12 to 24 months. If the photodegradable netting is plastic, the netting color must be either clear or green. Black plastic netting will not be allowed.
  - 100 percent biodegradable jute netting that has a life expectancy between 6 to 12 months.
- 411-P01 MAINLINE MILLING: The last paragraph of Section 411.04 “Construction Requirements” only applies to the intersection with ND 1; the 5 day limitation will not apply to milling operations on US 2. Provide milling and paving equipment capable of following a string line.
- 411-P02 SURFACE TOLERANCE: Construct the finished surface of the milling to within 0.04 feet of the proposed elevation.
- 411-P03 MILLING SECTION: Remove the existing bituminous material at the beginning and end of milling sections, project termini, and at intersection to form a straight vertical edge to allow placement of the full depth of surfacing. The loaded trucks are limited to running on 1 mile of the milled surface at a time. The Contractor is allowed to use the leave out locations listed in Note 550-P04 to stay within the 1 mile limitation. Include the cost of labor, materials and equipment in the price bid for “Milling Pavement Surface”.
- 411-P04 RELAYING MILLED MATERIAL: This work consists of placing, shaping, and compacting material on the roadway shoulders using a road widening/shouldering machine. Use one of the following materials:
- Asphalt millings from the project;
  - Class 4 aggregate meeting the requirements of Section 816; or
  - Class 5 aggregate meeting the requirements of Section 816.
- Use the same type of material throughout the project.
- If asphalt millings are used, the following additional requirements apply:
- Produce material with a maximum particle size of 1.5 inches;
- Such payment is full compensation for furnishing all materials, equipment, labor, and incidentals to complete the work as specified.
- Provide 1627 ton of milled material for project NH-6-002(123)295.
- 411-P05 MILLED MATERIAL: Approximately 5500 ton of hot bituminous pavement (HBP) material will be stockpiled with a front-end loader at the NDDOT Maintenance Yard located at 205 Main Street South, Pekin, ND 58361. Process the HBP material so that the maximum particle size does not exceed

This document was originally issued and sealed by Sara A. Cahlin, Registration Number PE-8397, on 11/13/2017 and the original document is stored at the North Dakota Department of Transportation.

NOTES

Revised 11/14/2017

STATE	PROJECT NO.	SECTION NO.	SHEET NO.
ND	NH-6-002(122)295	6	2

1-1/2". Notify the NDDOT Section Yard 72 hours prior to delivery of any HBP material. Include the cost of labor and equipment to remove, process, haul, and stockpile the HBP material in the price bid for "Milling Pavement Surface".

550-P01 DOWEL BARS: Include the cost of cleaning, drilling, epoxy, and dowel bars where the new concrete pavement abuts the existing concrete in the price bid for "Concrete Placement - Doweled".

550-P02 CONCRETE PAVEMENT: Place the concrete on a clean surface, free of loose or adhering foreign material. Air blast the milled surface no more than 30 minutes before placing concrete. Loaded trucks are allowed to run on the milled surface and back up to the concrete paving operation as long as loaded trucks aren't tracking foreign material onto the milled surface.

550-P03 CONCRETE PAVEMENT: The Department will waive the requirement to place the reinforcing steel, tie bars and dowel bar assemblies a minimum of 2,000 feet ahead of the paving operation as stated in Sections 550.04 E.1 and 550.04 G.2 and allow the use of the roadway as a haul road at the Contractors request, provided the following conditions are met:

- Repair all damaged areas
- Construct the finished surface to the specific surface tolerance prior to the placement of reinforcing steel, tie bars and dowel bar assemblies.
- Place the reinforcing steel and tie bars on approved supports securely, properly and accurately in advance of the paving operation.

550-P04 LEAVE OUT: Leave out consists of paving half an intersection at a side street and allowing traffic to cross US 2 on the unpaved portion. The portion left out will not be paved until the concrete overlay has attained a flexural strength of 450 psi or a compressive strength of 3,000 psi.  
Leave out location are:

- Sta. 15611+75 – Airport Entrance
- Sta. 15892+18 – 42<sup>nd</sup> St NE
- Sta. 15981+30 – Private Drive Access
- Sta. 16041+52 – 113<sup>th</sup> Ave NE
- Sta. 16081+90 – Private Drive Access

Leave outs may be added or eliminated at the request of the contractor and at the discretion of the engineer. Include the cost for this work in the price bid for "Concrete Placement – Doweled".

550-P05 CONCRETE PAVEMENT: Included in the quantity for "CONCRETE OVERLAY" is an additional 5% for irregularities.

550-P06 CONCRETE PAVEMET: Contractor has the option of utilizing dowel bar basket clips and nails at shown in Section 20 sheet 6. If this option is utilized the contractor must:

Furnish a MIT-Scan-T2 non-destructive testing device having the ability to locate dowel bars. Perform all tests in the presents of the Engineer unless otherwise approved. Locate the entire span of the dowel bar basket and verify the anchoring of the dowel bar basket by locating the upstream and downstream edges of the dowel bar baskets. Testing requirements are as follows:  
Verify the adequacy of the dowel bar anchoring by scanning seven random doweled contraction joint in each lot.

704-100 TRAFFIC CONTROL SUPERVISOR: Provide a Traffic Control Supervisor.

704-200 PRECAST CONCRETE MEDIAN BARRIERS – STATE FURNISHED: Obtain 36 barriers from Devils Lake District. Return barriers to Devils Lake District. Obtain 44 barriers from Grand Forks District. Return barriers to Grand Forks District.

Some 4 inch x 4 inch boards are available at the return location. Provide any additional 4 inch x 4 inch boards necessary to stack barriers. The boards will become property of the Department. Include the cost for boards in the contract unit price for "Precast Concrete Median Barrier - State Furnished".

704-301 SEQUENCING ARROW PANEL – TYPE C – CROSSOVER: Provide solar powered arrow panels that meet the requirements of the MUTCD and ITE and that are capable of operating for 20 days without a solar charge.

Include all costs for materials, equipment, labor, and incidentals in the contract unit price for "Sequencing Arrow Panel – Type C – Crossover".

704-511 OBLITERATION OF PAVEMENT MARKINGS: Mask pavement markings designated for obliteration as specified in Section 704.04 N.1, "Masking".

704-P01 TRAFFIC CONTROL FOR BITUMINOUS PAVEMENT: Provide traffic control consisting of median crossings and road closure.

Maintain a minimum 12 feet wide lane for traffic at all times.

Complete necessary pavement marking and rumble strip installation operations prior to removing traffic control crossovers.

Phase 1: Construct median cross overs. A total of 4 lane closures have been provided to allow work at two separate locations. Remove existing median approach.

Phase 2: Perform work on mainline concrete overlay and cross road overlay.

This document was originally issued and sealed by Sara A. Cahlin, Registration Number PE-8397, on 11/13/2017 and the original document is stored at the North Dakota Department of Transportation.

NOTES

Revised 11/14/2017

STATE	PROJECT NO.	SECTION NO.	SHEET NO.
ND	NH-6-002(122)295	6	3

Phase 3: Removal of median cross overs. A total of 4 lane closures have been provided to allow work at two separate locations.

Traffic control device quantities are based on the phasing described above and the following list. Provide additional devices at no cost to the Department.

Standard D-704-15 layout A – For ND 1 intersection paving  
Standard D-704-22 layouts K and L – For trucks hauling  
Standard D-704-26 layouts CC, EE, and GG – For paving  
Standard D-704-34 – For single lane closure  
Standard D-704-38 – For east median crossover  
Standard D-704-39 – For west median crossover

Place flaggers and traffic control devices as shown on Standard D-704-15, layout A at the intersection of US 2 and ND 1 when paving in the intersection.

704-P02 CLOSING AND MAINTAINING ACCESS: Maintain access to private drives and local roads at all times with the use of leave outs or work with the local entity to temporarily close access. Notify the local entity one week prior to any closure.

704-P03 TRAFFIC CONTROL AT ND 1: Temporarily widen the west edge of the ND 1 approach with milled material, during Phase 1 of the intersection paving. Remove the extra material once the intersection is complete.

Placement of the milled material is measured as “Relaying Milled Material”.  
Removal of the milled material is measured as “Remove Aggregate Base & Surfacing”.

704-P01 FLASHING BEACON: Provide solar powered flashing beacons that meet the requirements of the MUTCD and ITE. Provide beacons that are visible for a distance of 0.25 miles (1,320 feet) and are capable of operating for 20 days without a solar charge.

Include all costs for materials, equipment, labor, and incidentals in the contract unit price for "Flashing Beacon – Post Mounted".

706-P01 FIELD OFFICE: Provide a field office which meets the following requirements:

- 1. The field office shall be a minimum of 450 square feet.
- 2. Indoor bathroom facilities.
- 3. Air conditioner (20,000 BTU minimum)
- 4. Lighting (lumens required 110 foot-candles)
- 5. Minimum of 3 phone jacks (NDDOT to pay for phone service)
- 6. Heat, electric, sewer, and water hookups to be furnished by contractor to pay utility bills.
- 7. Cabinet space of a minimum of 32 cubic feet.
- 8. Counter space of a minimum of 40 square feet.

- 9. The floor is to be free of protrusions so that it will accommodate NDDOT furnished office equipment.
- 10. Photocopy/printer machine capable of 11x17 photocopies and toner to last the duration of the project (NDDOT will furnish paper). Other features to include digital coping & scanning (fax capabilities can be included but not necessary). Copier/printer machine shall have operating software compatible with that used by NDDOT.
- 11. The location of the field office shall be on, or as close to the project as possible and approved by the Engineer. Any rental fees shall be paid by Contractor.
- 12. The field office shall be available for occupancy at the start of the project and remain available to project completion.
- 13. The following services will be furnished and paid for by the NDDOT and requested through the Work Management System:
  - a. Telephone
  - b. Broadband internet service including State Network access

All requirements of the Field Office are subject to approval by the Engineer.  
Payment for the Field Office shall be under the bid item “Field Office”.

- Schedule for Payments:
- 25% when set up on site
  - 50% when 30% of work is completed
  - 75% when 60% of work is completed
  - 100% when project is complete

This document was originally issued and sealed by Sara A. Cahlin, Registration Number PE-8397, on 11/13/2017 and the original document is stored at the North Dakota Department of Transportation.

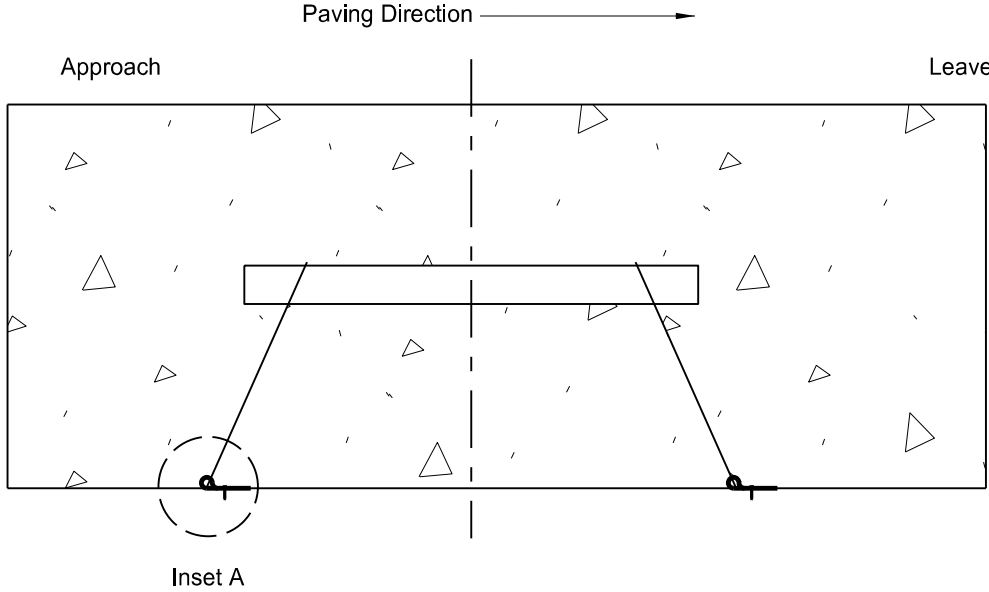
ESTIMATE OF QUANTITIES

STATE	PROJECT NO.	SECTION NO.	SHEET NO.
ND	NH-6-002(122)295	8	1

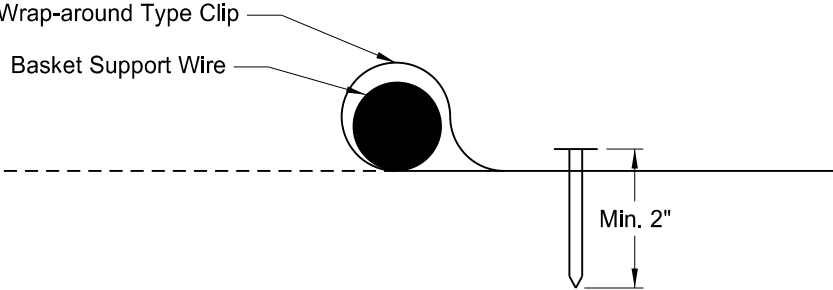
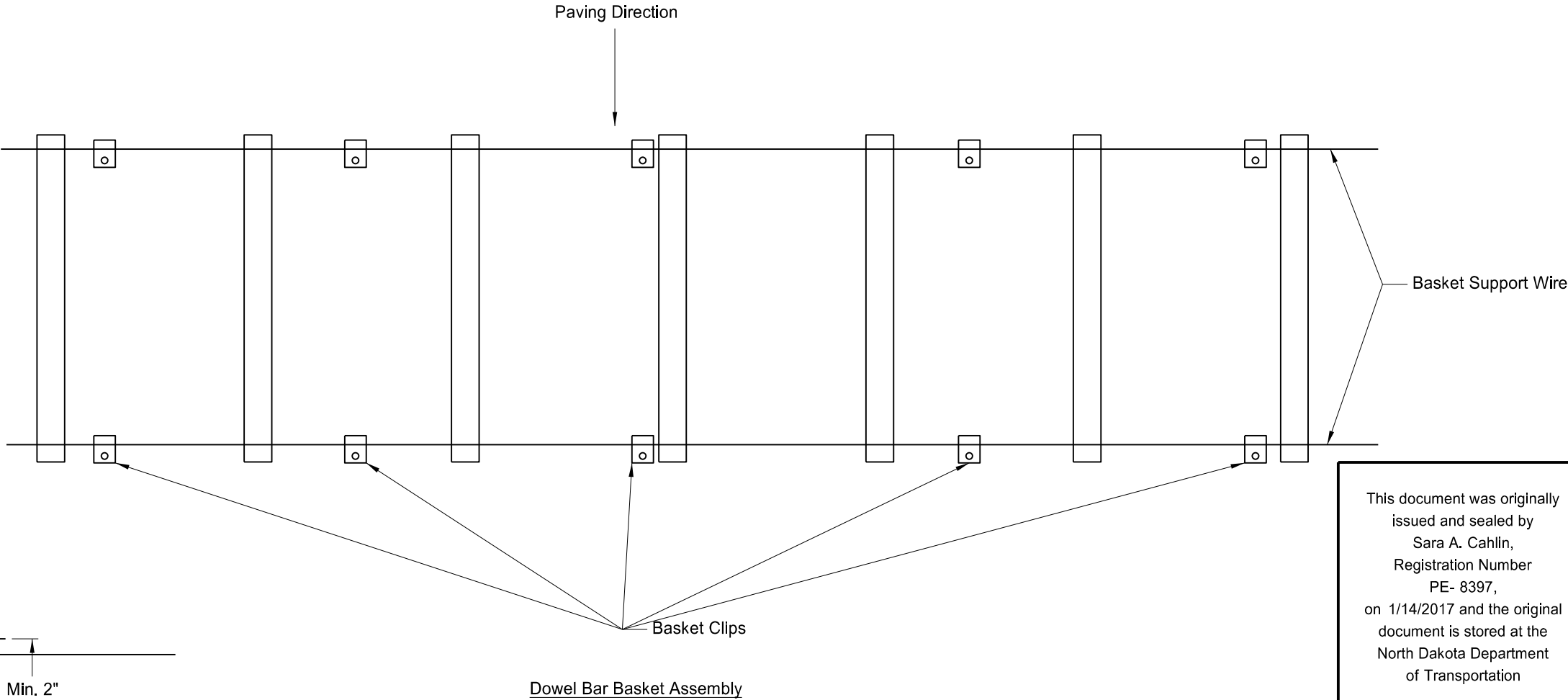
REVISED 11/13/2017

SPEC	CODE	ITEM DESCRIPTION	UNIT	MAINLINE	TOTAL
----	----	-----	----	-----	-----
103	0100	CONTRACT BOND	L SUM	0.815	0.815
202	0021	REMOVE AGGREGATE BASE & SURFACING	TON	1,625	1,625
202	0350	REMOVAL OF TEMPORARY BYPASS	EA	3	3
203	0103	COMMON EXCAVATION-TYPE C	CY	383	383
203	0109	TOPSOIL	CY	1,122	1,122
203	0119	TOPSOIL-IMPORTED	CY	112	112
203	0140	BORROW-EXCAVATION	CY	5,515	5,515
216	0100	WATER	M GAL	170	170
230	0302	SUBGRADE PREPARATION-TYPE A-SHOULDERS	STA	40	40
251	0200	SEEDING CLASS II	ACRE	1.5	1.5
251	2000	TEMPORARY COVER CROP	ACRE	0.8	0.8
253	0101	STRAW MULCH	ACRE	2.3	2.3
261	0112	FIBER ROLLS 12IN	LF	5,625	5,625
261	0113	REMOVE FIBER ROLLS 12IN	LF	1,880	1,880
302	0100	SALVAGED BASE COURSE	TON	348	348
302	0120	AGGREGATE BASE COURSE CL 5	TON	1,306	1,306
401	0050	TACK COAT	GAL	616	616
401	0060	PRIME COAT	GAL	875	875
411	0105	MILLING PAVEMENT SURFACE	SY	106,433	106,433
411	0132	RELAYING MILLED MATERIAL	TON	8,811	8,811
430	0045	SUPERPAVE FAA 45	TON	1,325	1,325
430	5828	PG 58-28 ASPHALT CEMENT	TON	79.4	79.4
550	0355	CONCRETE OVERLAY	CY	14,695	14,695
550	0365	CONCRETE PLACEMENT - DOWELED	SY	71,934	71,934
702	0100	MOBILIZATION	L SUM	0.815	0.815
704	0100	FLAGGING	MHR	800	800
704	1000	TRAFFIC CONTROL SIGNS	UNIT	8,773	8,773
704	1041	ATTENUATION DEVICE-TYPE B-55	EA	2	2
704	1052	TYPE III BARRICADE	EA	119	119
704	1060	DELINEATOR DRUMS	EA	97	97
704	1067	TUBULAR MARKERS	EA	107	107
704	1072	FLEXIBLE DELINEATORS	EA	504	504
704	1080	STACKABLE VERTICAL PANELS	EA	11	11

Sheet Added11/14/2017	STATE	PROJECT NO.	SECTION NO.	SHEET NO.
	ND	NH-6-002(122)295	20	6



- Note:
1. Provide wrap-around clips with a minimum 2" nail.
  2. Install basket clip on the leave side of the basket support wire.
  3. Provide a minimum of 10 clips per dowel bar basket assembly.

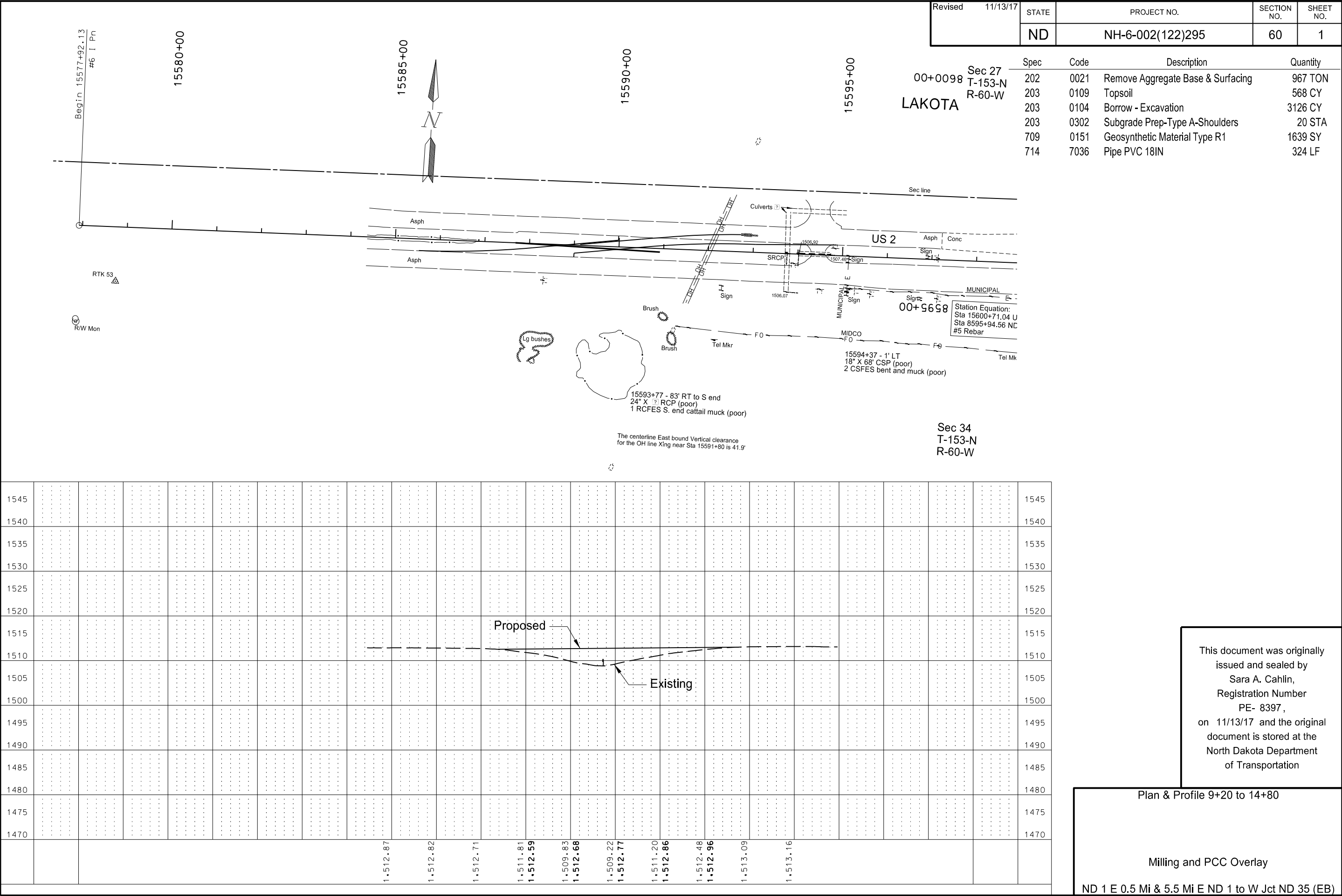


This document was originally issued and sealed by  
Sara A. Cahlin,  
Registration Number  
PE- 8397,  
on 1/14/2017 and the original document is stored at the  
North Dakota Department  
of Transportation

Basket Clip Detail

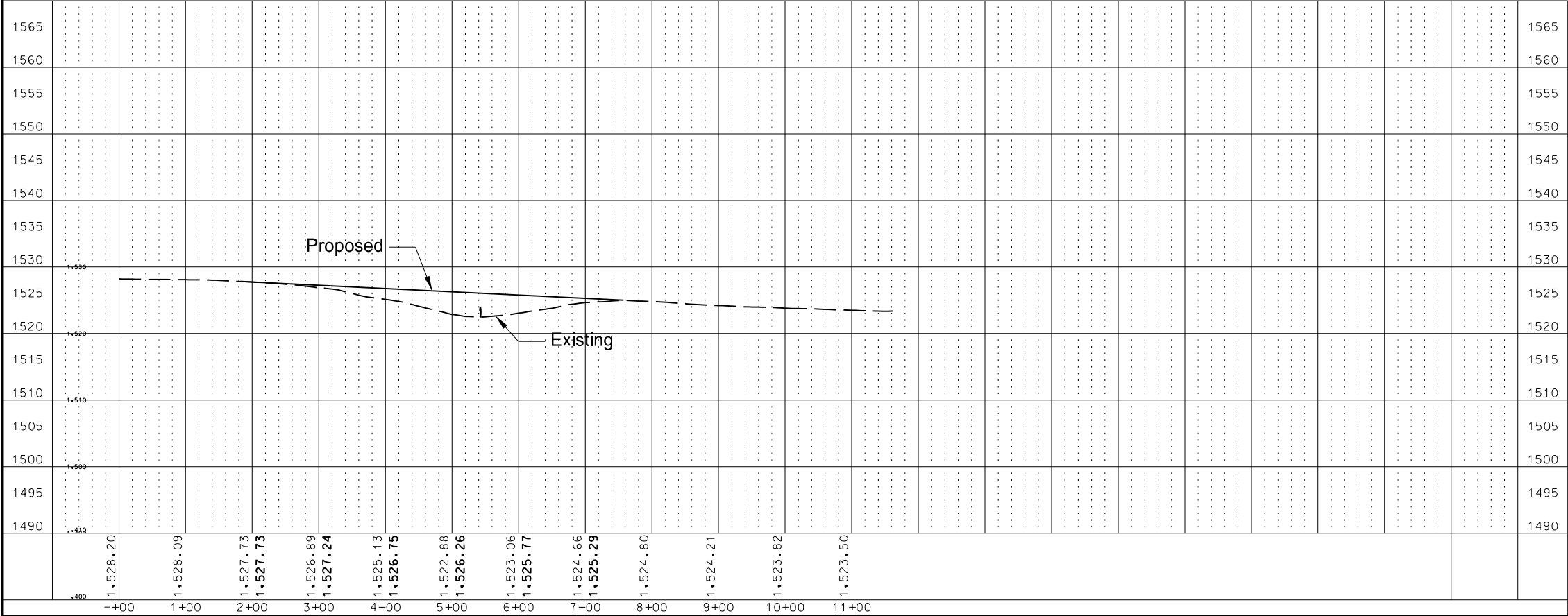
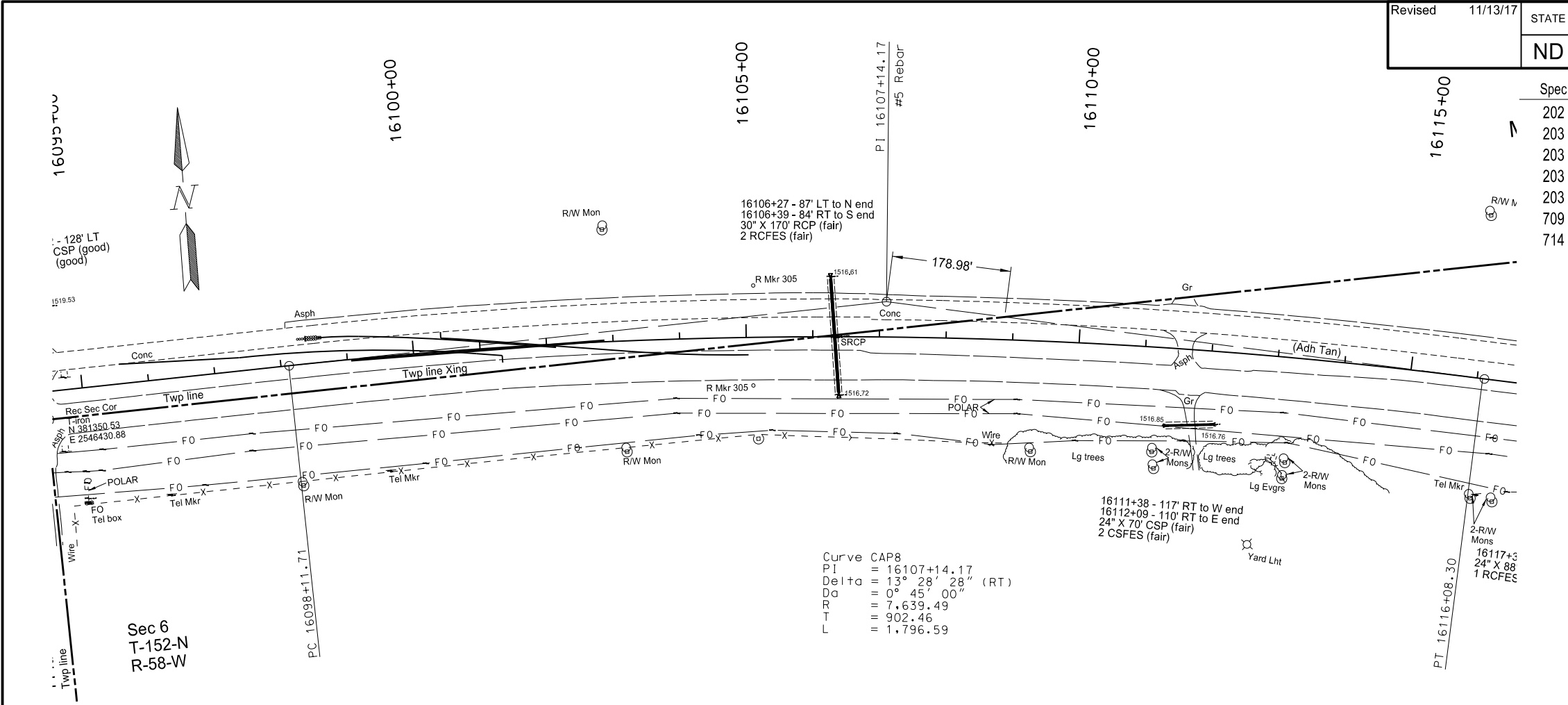
Milling and PCC Overlay

ND 1 E 0.5 Mi. & 5.5 Mi E ND 1 to W Jct ND 35 (EB)



Revised	11/13/17	STATE	PROJECT NO.	SECTION NO.	SHEET NO.
		ND	NH-6-002(122)295	60	15

Spec	Code	Description	Quantity
202	0021	Remove Aggregate Base & Surfacing	658 TON
203	0103	Common Excavation-Type C	373 CY
203	0109	Topsoil	554 CY
203	0104	Borrow - Excavation	2389 CY
203	0302	Subgrade Prep-Type A-Shoulders	20 STA
709	0151	Geosynthetic Material Type R1	1639 SY
714	7036	Pipe PVC 18IN	380 LF



This document was originally issued and sealed by  
Sara A. Cahlin,  
Registration Number  
PE- 8397,  
on 11/13/17 and the original document is stored at the  
North Dakota Department  
of Transportation

Plan & Profile 1+80 to 7+60

Milling and PCC Overlay

ND 1 E 0.5 Mi & 5.5 Mi E ND 1 to W Jct ND 35 (EB)