

North Dakota Department of Transportation

Thomas K. Sorel
Director

Doug Burgum
Governor

November 9, 2017

ADDENDUM 2 – JOB 22

TO: All prospective bidders on Project SU-2-990(054)058, Job No. 22 scheduled for the November 17, 2017 bid opening.

The following plan and request for proposal revisions shall be made:

Plan Revisions:

See attached summary from Chad Petersen, KLJ dated November 8, 2017 for an explanation.

Request for Proposal Revisions:

Remove and replace pages 5 and 6 of 8 of the Proposal pages located at the beginning of the Request for Proposal, with the enclosed pages revised 11/9/2017.

The following changes were made to the Bid Items:

Spec No.	Code No.	Description	Description of Change
202	0130	REMOVAL OF CURB AND GUTTER	Decreased from 441 to 263 LF
302	0120	AGGREGATE BASE COURSE CL 5	Decreased from 1,691 to 75 TON
430	2000	PATCHING	Decreased from 25 to 10 TON
570	0240	DOWELED CONTRACTION JOINT ASSEMBLY	Decreased from 1,240 to 244 LF
570	0424	DOWEL BARS	Decreased from 2,480 to 1,486 EA
570	0700	CONC PVMT REPAIR-SPOT FULL DEPTH	Decreased from 33,805 to 13,433 SF
570	0966	RANDOM PCC CRACK CLEANING & SEALING	Decreased from 1,193 to 1,176 LF
570	1512	SPALL REPAIR-PARTIAL DEPTH	Decreased from 2,466 to 1,668 SF
704	1500	OBLITERATION OF PAVEMENT MARKING	Decreased from 7,314 to 6,157 SF
722	6140	ADJUST GATE VALVE BOX	Decreased from 3 to 1 EA
722	6200	ADJUST MANHOLE	Decreased from 15 to 10 EA
748	0140	CURB & GUTTER-TYPE I	Decreased from 441 to 263 LF
762	0113	EPOXY PVMT MK 4IN LINE	Decreased from 6,364 to 3,132 LF
762	0117	EPOXY PVMT MK 24IN LINE	Decreased from 942 to 902 LF

Addendum 1

Job 22, November 17, 2017 Bid Opening

Page 2 of 2

This addendum is to be incorporated into the bidder's proposal for this project. AASHTOWare Project Bids files should be updated by downloading the addendum file from the Bid Express online bidding exchange at <http://www.bidx.com/> and load it into the AASHTOWare Project Bids program.

A handwritten signature in black ink, appearing to read "Phillip Murdoff". The signature is stylized and cursive.

PHILLIP MURDOFF – CONSTRUCTION SERVICES ENGINEER

80:dch

Enclosure



November 8, 2017

ADDENDUM 2 JOB 22

TO: All prospective bidders and suppliers on Project SU-2-990(054)058 scheduled for the November 17, 2017 bid opening.

Revisions for SU-2-990(054)058:

Remove the following sheets:

- Section 4, Sheet 3
- Section 11, Sheets 9-10
- Section 30, Sheet 2

Remove & Replace the following sheets:

- Section 1, Sheet 1: 7th Street has been removed.
- Section 2, Sheet 1: Table of Contents has been updated to reflect removed sheets.
- Section 8, Sheet 1: The following bid items have been updated:

"CONTRACT BOND", "REMOVAL OF CURB & GUTTER", "AGGREGATE BASE COURSE CL 5", "PATCHING", "DOWELED CONTRACTION JOINT ASSEMBLY", "DOWEL BARS", "CONC PVMT REPAIR-SPOT FULL DEPTH", "RANDOM PCC CRACK CLEANING & SEALING", "SPALL REPAIR-PARTIAL DEPTH", "MOBILIZATION", "TRAFFIC CONTROL SIGNS", "TYPE I BARRICADE", "TYPE III BARRICADE", "DELINEATOR DRUMS", "STACKABLE VERTICAL PANELS", "OBLITERATION OF PAVEMENT MARKING", "ADJUST GATE VALVE BOX", "ADJUST MANHOLE", "CURB & GUTTER-TYPE I", "EPOXY PVMT MK MESSAGE", "EPOXY PVMT MK 4IN LINE", "EPOXY PVMT MK 6IN LINE", "EPOXY PVMT MK 8IN LINE", and "EPOXY PVMT MK 24IN LINE"

- Section 11, Sheet 9: Section 11, Sheets 9-10 were removed. Section 11, Sheet 11 was re-numbered.
- Section 30, Sheet 1: 7th Street has been removed. Section 30, Sheet 1-2 were combined.

Sincerely,

KLJ

A handwritten signature in blue ink that reads 'Chad Petersen'.

Chad Petersen
Project Engineer

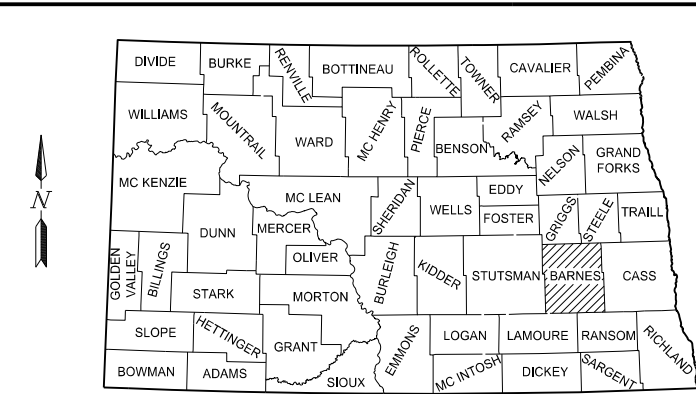
Enclosure(s): Revised Plan Sheets
Project #: SU-2-990(054)058

BID ITEMS

Project: SU-2-990(054)058 (PCN-21845)

Bidder must type or neatly print unit prices in numerals, make extensions for each item, and total. Do not carry unit prices further than three (3) decimal places.

Item No.	Spec No.	Code No.	Description	Unit	Approx. Quantity	Unit Price		Amount	
						\$\$\$\$	000	\$\$\$\$	00
001	103	0100	CONTRACT BOND	L SUM	1.				
002	202	0130	REMOVAL OF CURB & GUTTER	LF	263.				
003	302	0120	AGGREGATE BASE COURSE CL 5	TON	75.				
004	430	2000	PATCHING	TON	10.				
005	570	0240	DOWELED CONTRACTION JOINT ASSEMBLY	LF	244.				
006	570	0424	DOWEL BARS	EA	1,486.				
007	570	0700	CONC PVMT REPAIR-SPOT FULL DEPTH	SF	13,433.				
008	570	0966	RANDOM PCC CRACK CLEANING & SEALING	LF	1,176.				
009	570	1512	SPALL REPAIR-PARTIAL DEPTH	SF	1,668.				
010	702	0100	MOBILIZATION	L SUM	1.				
011	704	1000	TRAFFIC CONTROL SIGNS	UNIT	3,874.				
012	704	1050	TYPE I BARRICADE	EA	20.				
013	704	1052	TYPE III BARRICADE	EA	74.				
014	704	1060	DELINEATOR DRUMS	EA	94.				
015	704	1080	STACKABLE VERTICAL PANELS	EA	40.				
016	704	1500	OBLITERATION OF PAVEMENT MARKING	SF	6,157.				



STATE COUNTY MAP

JOB #22

Revised	11/8/17	STATE	PROJECT NO.	PCN	SECTION NO.	SHEET NO.
		ND	SU-2-990(054)058	21845	1	1

**CITY OF VALLEY CITY, NORTH DAKOTA
PLANS FOR FEDERAL AID PROJECT
NUMBER SU-2-990(054)058**

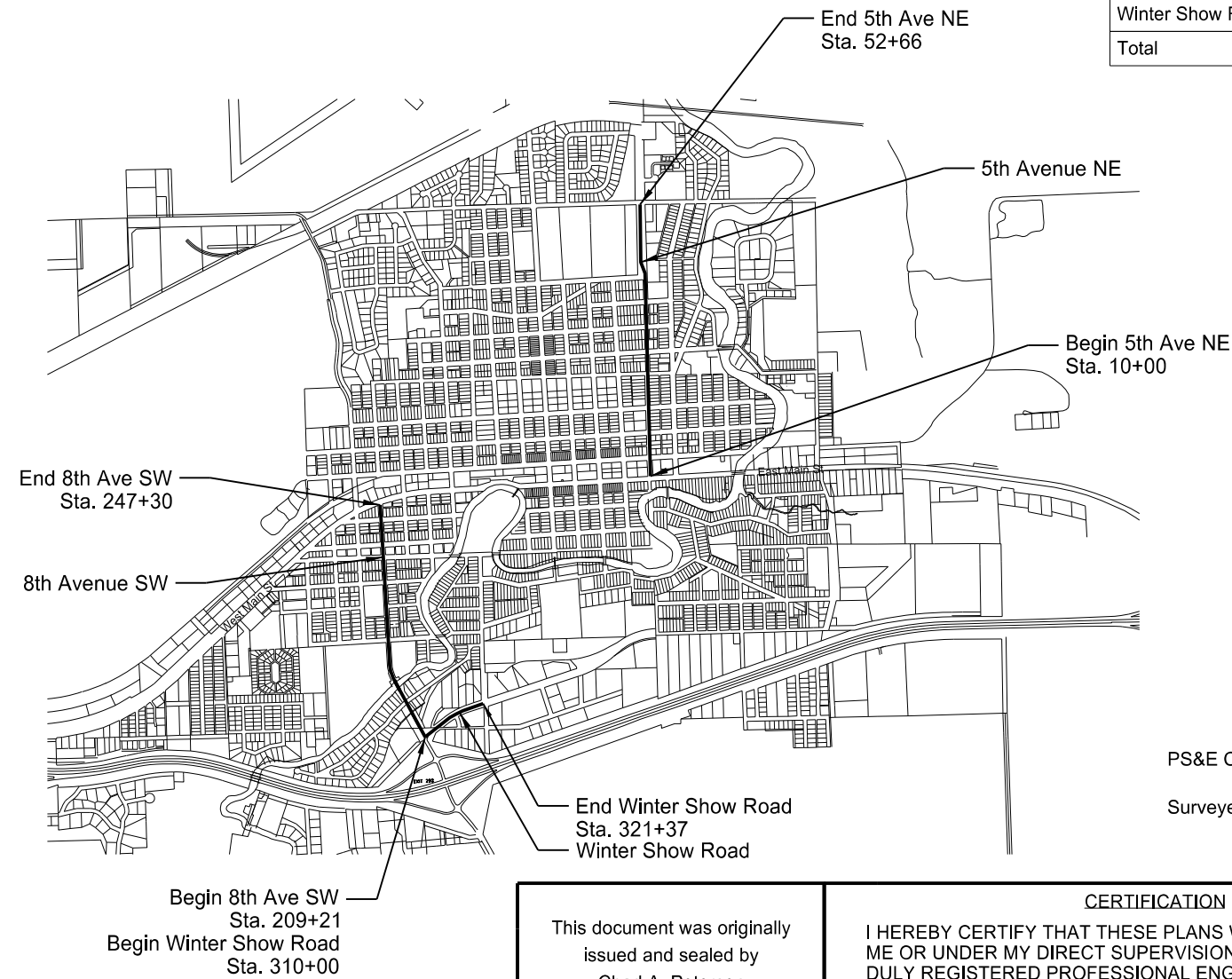
**Concrete Pavement Repairs, Curb and Gutter, and Incidentals
5th Avenue NE, 8th Avenue SW,
and Winter Show Road**

GOVERNING SPECIFICATIONS

2014 Standard Specifications adopted by the North Dakota Department of Transportation and the Supplemental Specifications effective on the date the project is advertised.

PROJECT LENGTH

Project	Gross Miles	Net Miles
5th Avenue NE	0.888	0.888
8th Avenue SW	0.713	0.713
Winter Show Road	0.215	0.215
Total	1.816	1.816



PS&E Corrections Made _____ August 2017
 Surveyed & Designed Date _____ July 2017

DESIGNER Michael Strom
 DESIGNER Jacob Loegering
 DESIGNER _____
 DESIGNER _____
 DESIGNER _____

This document was originally issued and sealed by
 Chad A. Petersen
 Registration Number
 PE- 4884,
 on 11/8/17 and the original document is stored at the
 Office of KLJ in
 Valley City, ND

CERTIFICATION
 I HEREBY CERTIFY THAT THESE PLANS WERE PREPARED BY ME OR UNDER MY DIRECT SUPERVISION, AND THAT I AM A DULY REGISTERED PROFESSIONAL ENGINEER UNDER THE LAWS OF THE STATE OF NORTH DAKOTA.

 Chad A. Petersen /s/
 KLJ
 DATE 11/8/17 REGISTRATION NUMBER PE-4884



1010 4th AVENUE SW
 P.O. BOX 937
 VALLEY CITY, ND 58072-0937
 (701) 845-4980, FAX (701) 845-0252
 © KLJ 2017

TABLE OF CONTENTS

Revised 11/8/2017	STATE	PROJECT NO.	SECTION NO.	SHEET NO.
	ND	SU-2-990(054)058	2	1

PLAN SECTIONS

Section	Page(s)	Description
1	1	Title Sheet
2	1	Table of Contents
4	1 - 2	Scope of Work
6	1	Plan Notes
8	1	Estimate of Quantities
11	1 - 8	Concrete Pavement Data Sheets
11	9	Striping Data Sheets
20	1 - 5	Concrete Pavement Repair Detail
20	6	Spall Repair Detail
20	7	Pavement Reinforcing Detail at Pipe Locations
20	8	Floating Manhole Details
30	1	Typical Sections
100	1	Traffic Control Devices List
100	2 - 7	Traffic Control Layouts

LIST OF STANDARD DRAWINGS


Number	Description
D-101-1, 2 & 3	NDDOT Abbreviations
D-101-10	NDDOT Utility Company and Organization Abbreviations
D-101-20, 21	Line Styles
D-101-30, 31 & 32	Symbols
D-704-7	Breakaway Systems For Construction Zone Signs - Perforated Tube
D-704-8	Breakaway Systems For Construction Zone Signs - U-Channel Post
D-704-9	Construction Sign Details - Terminal And Guide Signs
D-704-11	Construction Sign Details - Warning Signs
D-704-13	Barricade And Channelizing Device Details
D-704-14	Construction Sign Punching And Mounting Details
D-704-15	Road Closure Layouts
D-704-19	Road Closure And Lane Closure On A Two Way Road Layouts
D-704-20	Terminal And Seal Coat Sign Layouts
D-704-22	Construction Truck And Temporary Detour Layouts
D-704-25	Lane Closures On Urban Streets Layouts
D-704-26	Miscellaneous Sign Layouts
D-704-50	Portable Sign Support Assembly
D-762-1	Pavement Marking Message Details
D-762-4	Pavement Marking

SPECIAL PROVISIONS

Number	Description
SP 5184(14)	Permits and Environmental Considerations

Revised	11/8/17	STATE	PROJECT NO.	SECTION NO.	SHEET NO.
		ND	SU-2-990(054)058	8	1

SPEC	CODE	ITEM DESCRIPTION	UNIT	PARTICIPATING TOTAL
103	0100	CONTRACT BOND	L SUM	1.0
202	0130	REMOVAL OF CURB & GUTTER	LF	263
302	0120	AGGREGATE BASE COURSE CL 5	TON	75
430	2000	PATCHING	TON	10
570	0240	DOWELED CONTRACTION JOINT ASSEMBLY	LF	244
570	0424	DOWEL BARS	EA	1,486
570	0700	CONC PVTM REPAIR-SPOT FULL DEPTH	SF	13,433
570	0966	RANDOM PCC CRACK CLEANING & SEALING	LF	1,176
570	1512	SPALL REPAIR-PARTIAL DEPTH	SF	1,668
702	0100	MOBILIZATION	L SUM	1.0
704	1000	TRAFFIC CONTROL SIGNS	UNIT	3,874
704	1050	TYPE I BARRICADE	EA	20
704	1052	TYPE III BARRICADE	EA	74
704	1060	DELINEATOR DRUMS	EA	94
704	1080	STACKABLE VERTICAL PANELS	EA	40
704	1500	OBLITERATION OF PAVEMENT MARKING	SF	6,157
722	6140	ADJUST GATE VALVE BOX	EA	1
722	6200	ADJUST MANHOLE	EA	10
748	0140	CURB & GUTTER-TYPE I	LF	263
762	0112	EPOXY PVMT MK MESSAGE	SF	746.5
762	0113	EPOXY PVMT MK 4IN LINE	LF	3,132
762	0114	EPOXY PVMT MK 6IN LINE	LF	4,422
762	0115	EPOXY PVMT MK 8IN LINE	LF	527
762	0117	EPOXY PVMT MK 24IN LINE	LF	902
772	2810	TEMPORARY TRAFFIC SIGNAL	EA	4


SU-2-990(054)058 CITY OF VALLEY CITY, NORTH DAKOTA		
	ESTIMATE OF QUANTITIES	
	<small>DRAWN BY</small> JN	<small>CHECKED BY</small> MS

5TH AVENUE NE (Participating)			
	LENGTH	QUANTITY	UNIT
EPOXY PVMT MK 4IN LINE (10' SKIP 30' GAP)	3320	830	LF
EPOXY PVMT MK 4IN LINE (DOUBLE LINE)	241	482	LF
EPOXY PVMT MK 6IN LINE (CROSS WALKS)	1440	2880	LF
EPOXY PVMT MK 8IN LINE (LANE MARKERS)		120	LF
EPOXY PVMT MK 24IN LINE (STOP BARS)		355	LF
EPOXY PVMT MK 24IN LINE (CONTINENTAL CROSSINGS)		0	LF
EPOXY PVMT MK MESSAGE	EA		
RIGHT ARROW (16 SF)	1	16	
LEFT ARROW (16 SF)	1	16	
STRAIGHT AND TURN (27 SF)	0	0	
SCHOOL CROSSING (80 SF)	0	0	
ONLY (22 SF)	2	44	
TOTAL		76	SF

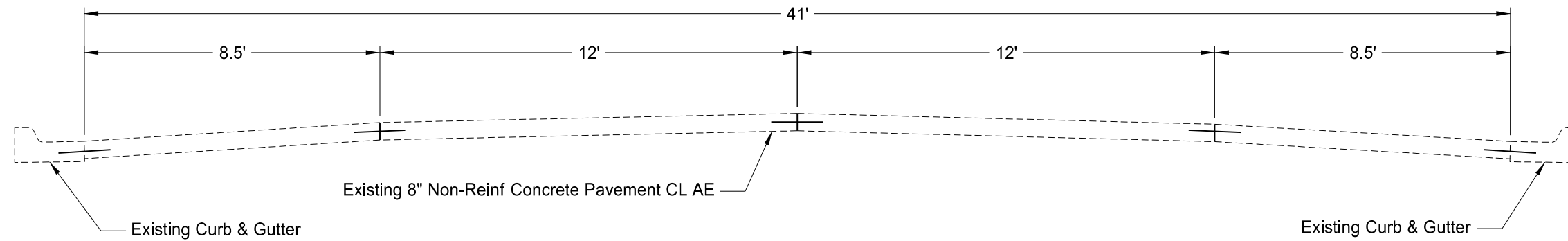
WINTER SHOW ROAD (Participating)			
	LENGTH	QUANTITY	UNIT
EPOXY PVMT MK 4IN LINE (10' SKIP 30' GAP)	760	190	LF
EPOXY PVMT MK 4IN LINE (DOUBLE LINE)	355	710	LF
EPOXY PVMT MK 6IN LINE (CROSS WALKS)	0	0	LF
EPOXY PVMT MK 8IN LINE (LANE MARKERS)		305	LF
EPOXY PVMT MK 24IN LINE (STOP BARS)		34	LF
EPOXY PVMT MK 24IN LINE (CONTINENTAL CROSSINGS)		0	LF
EPOXY PVMT MK MESSAGE	EA		
RIGHT ARROW (16 SF)	1	16	
LEFT ARROW (16 SF)	0	0	
STRAIGHT AND TURN (27 SF)	1	27	
SCHOOL CROSSING (80 SF)	0	0	
ONLY (22 SF)	0	0	
TOTAL		43	SF

8TH AVENUE SW (Participating)			
	LENGTH	QUANTITY	UNIT
EPOXY PVMT MK 4IN LINE (10' SKIP 30' GAP)	3680	920	LF
EPOXY PVMT MK 4IN LINE (DOUBLE LINE)	0	0	LF
EPOXY PVMT MK 6IN LINE (CROSS WALKS)	771.5	1543	LF
EPOXY PVMT MK 8IN LINE (LANE MARKERS)		102	LF
EPOXY PVMT MK 24IN LINE (STOP BARS)		237	LF
EPOXY PVMT MK 24IN LINE (CONTINENTAL CROSSINGS)		276	LF
EPOXY PVMT MK MESSAGE	EA		
RIGHT ARROW (16 SF)	2	32	
LEFT ARROW (16 SF)	2	32	
STRAIGHT AND TURN (27 SF)	0	0	
SCHOOL CROSSING (80 SF)	7	560	
ONLY (22 SF)	0	0	
TOTAL		624	SF

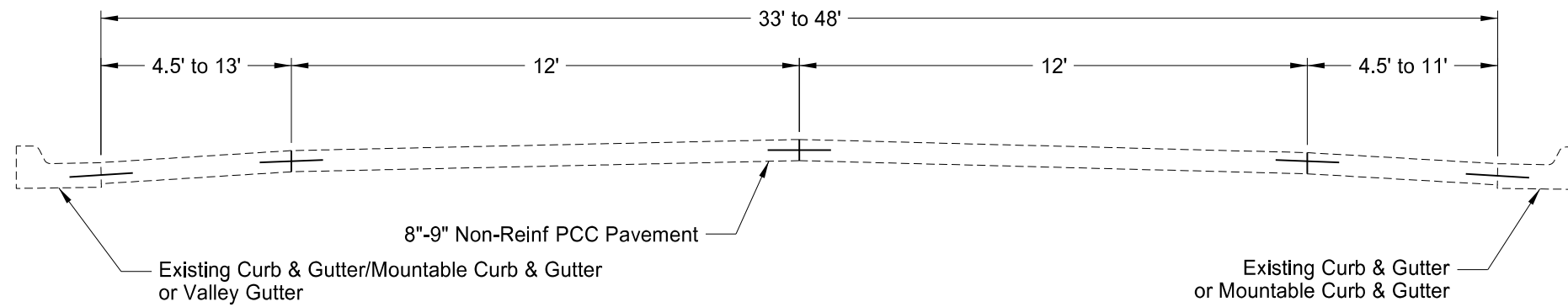
This document was originally issued and sealed by Chad A. Petersen Registration Number PE- 4884, on 11/8/17 and the original document is stored at the Office of KLJ in Valley City, ND

SU-2-990(054)058 CITY OF VALLEY CITY, NORTH DAKOTA		
	STRIPING DATA SHEETS	
	<small>DRWN. BY</small> JN	<small>CHFD. BY</small> MS

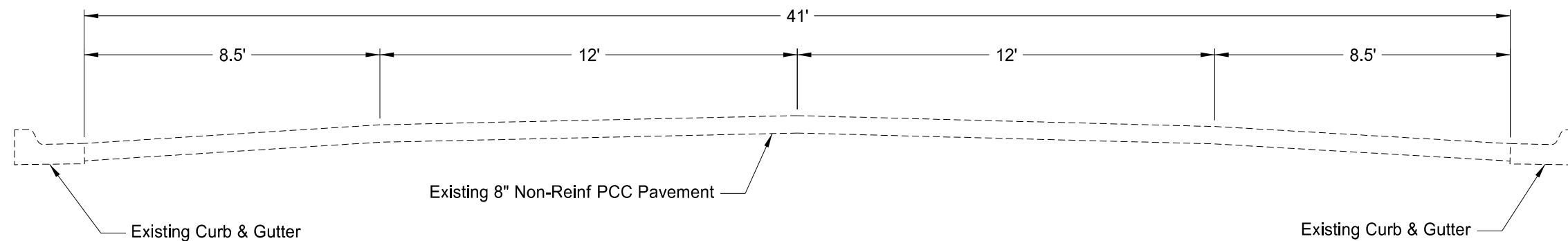
Revised	11/8/17	STATE	PROJECT NO.	SECTION NO.	SHEET NO.
		ND	SU-2-990(054)058	30	1



5th Avenue NE
Typical Section
Sta. 12+61 to 54+32




8th Avenue SW
Typical Section
Sta. 200+00 to 238+20



Winter Show Road
Typical Section
Sta. 310+00 to 321+37

This document was originally issued and sealed by Chad A. Petersen Registration Number PE- 4884, on 11/8/17 and the original document is stored at the Office of KLJ in Valley City, ND

SU-2-990(054)058 CITY OF VALLEY CITY, NORTH DAKOTA		
	TYPICAL SECTIONS	
	<small>DRWN. BY</small> JN	<small>CHFD. BY</small> MS