

North Dakota Department of Transportation

Grant Levi, P.E.
Director

Doug Burgum
Governor

February 24, 2017

ADDENDUM 1 – JOB 10

TO: All prospective bidders on project SS-2-046(045)067, Job No. 10 scheduled for the March 17, 2017 bid opening.

The following plan and request for proposal revisions shall be made:

Plan Revisions:

Remove and replace sheets 6-1, 8-2 and 60-1 with the enclosed sheets revised 2/23/17.

Sheet 6-1:

Note 201-P02 CLEARING & GRUBBING was revised.

Note 203-P02 COMMON EXCAVATION-WASTE was revised. The legal description was revised.

Sheet 8-2:

Item 722 0110 MANHOLE 60IN; 2 EA was added.

Item 722 1110 MANOLE RISER 60IN; 12.4 LF was added.

Sheet 60-1:

Manhole Riser 60IN quantity was revised from 13 to 12.4 LF.

Request for Proposal Revisions:

Remove and replace page 7 of 9 of the Proposal pages located at the beginning of the Request for Proposal, with the enclosed page revised 2/24/2017.

Page 7 of 9:

Item 722 0110 MANHOLE 60IN; 2 EA was added.

Item 722 1110 MANOLE RISER 60IN; 12.4 LF was added.

This addendum is to be incorporated into the bidder's proposal for this project. AASHTOWare Project Bids files should be updated by downloading the addendum file from the Bid Express on-line bidding exchange at <http://www.bidx.com/> and load it into the AASHTOWare Project Bids program.

CAL J. GENDREAU – CONSTRUCTION SERVICES ENGINEER

80:plm

Enclosure

BID ITEMS

Project: SS-2-046(045)067 (PCN-19714)

Bidder must type or neatly print unit prices in numerals, make extensions for each item, and total. Do not carry unit prices further than three (3) decimal places.

Item No.	Spec No.	Code No.	Description	Unit	Approx. Quantity	Unit Price		Amount	
						\$\$\$\$	000	\$\$\$\$	00
033	714	5050	PIPE CORR STEEL .064IN 42IN	LF	875.				
034	714	5835	END SECT CORR STEEL .109IN 42IN	EA	1.				
035	714	6581	PIPE POLYETHYLENE CORR PERF 6IN DRAIN	LF	200.				
036	714	9771	UNDERDRAIN PIPE PVC NON-PERFORATED 6IN	LF	40.				
037	720	0110	RIGHT OF WAY MARKERS	EA	5.				
038	720	0125	ALIGNMENT MONUMENTS	EA	1.				
039	720	0130	IRON PIN R/W MONUMENTS	EA	3.				
040	720	0135	IRON PIN REFERENCE MONUMENTS	EA	2.				
041	722	0110	MANHOLE 60IN	EA	2.				
042	722	1110	MANHOLE RISER 60IN	LF	12.400				
043	754	0110	FLAT SHEET FOR SIGNS-TYPE XI REFL SHEETING	SF	30.				
044	754	0162	REMOVE & RESET DELINEATORS	EA	4.				
045	754	0206	STEEL GALV POSTS-TELESCOPING PERFORATED TUBE	LF	100.				
046	754	0592	RESET SIGN PANEL	EA	2.				
			TOTAL SUM BID						

STATE	PROJECT NO.	SECTION NO.	SHEET NO.
ND	SS-2-046(045)067	6	1

NOTES**GENERAL NOTES**

- 105-P01 INCLINOMETERS: Protect existing inclinometers at Sta. 377+56 Offset 57' RT and Sta. 379+73 Offset 71' RT.
- 201-P01 CLEARING & GRUBBING: Remove trees within the clearing & grubbing shown on Section 40 Sheet 1. Engineer approval is needed for additional tree removal.
- 201-P02 CLEARING & GRUBBING: Stockpile trees that are greater than 6 inches in diameter measured 4.5 feet from the ground within the temporary construction easement at a location specified by the landowner. Contact the landowner for stockpile location.
- 203-010 SHRINKAGE: 25 percent additional volume is included for shrinkage in earth embankment.
- 203-P01 COMMON EXC: Complete all work associated with Common Excavation – Type B before hauling Common Excavation – Waste away from the project.
- 203-P02 COMMON EXCAVATION – WASTE: Department Option waste site has an approximate capacity of 32,000 CY. Locate additional waste site(s). A waste site clues located in the NW ¼ of Section 1 T136N R58W. Obtain a Certificate of Approval (COA) on all contractor obtained waste sites. Earth moving equipment (scraper hauled dirt) will not be allowed on the highway except for crossing. Obtain pre-approval from the Geotechnical Section for all contractor obtained waste sites within ½ mile of the project limits.
- 203-P03 COMMON EXCAVATION – WASTE: 5.2 acres of Seeding Class II & Straw Mulch, 4033 CY of Topsoil – Waste Site, 2000 LF of Silt Fence and Remove Silt Fence, 1500 LF of Fiber Roll 12IN has been provided for the waste site and cartway.
- 302-P01 DRAINAGE AGGREGATE: The Engineer will contact Geotechnical Section to locate the trench drains in the field after the initial excavation is completed. Include the cost for excavation and placement of embankment in the bid price for Drainage Aggregate.
- Drainage Aggregate consists of Class 43 Aggregate. Modify Spec. 816.03 to remove the 8% max. shale requirement as it applies to Cl 43 Chips.
- 704-P01 TRAFFIC CONTROL: Provide traffic control consisting of a temporary lane closure and flagging.
- Traffic control device quantities are based on a 1500 foot lane closure and the list below. Provide additional devices at no cost to the Department.
1. Standard D-704-15, layout A;
 2. Standard D-704-19, layout F;
 3. Standard D-704-20, layout G;
 4. Standard D-704-22, layouts K and L;
 5. Standard D-704-24, layout S.

- 704-P02 PORTABLE CHANGEABLE MESSAGE SIGN: Install Portable Changeable Message Signs (PCMS) before work begins on the project. The Engineer will determine the locations for PCMS installation. Relocate the PCMS as directed by the Engineer.

Provide an operator trained in the use of the PCMS.

The Engineer will determine the message to be displayed. The operator shall program the message within one hour of the Engineer's request to change the message.

- 704-P03 PORTABLE RUMBLE STRIPS: Rumble strip consists of rubber or engineered polymers. Rumble strips may be composed of interlocking segments, have a hinge at the midpoint, or a single piece. Meet the following criteria for the rumble strips:

- consist of a minimum of 3 strips in each array
- capable of being installed without adhesives or bolts
- 10' minimum overall length of each strip
- 10" minimum width of each strip
- minimum height of ¾" and a maximum height of 1"
- 12" space between each strip.

Move rumble strips with the flagging operation. The Engineer will count and measure each array as one. Include the cost of obtaining, installing, maintaining, and relocating in the price bid for "Portable Rumble Strips".

- 714-P01 PIPE POLYETHYLENE CORR PERF 6IN DRAIN: Wrap pipe in a Geosynthetic Material Type D3 or D4 sock.

This document was originally issued and sealed by Sara A. Cahlin, Registration Number PE-8397, on 2/23/17 and the original document is stored at the North Dakota Department of Transportation.

ESTIMATE OF QUANTITIES

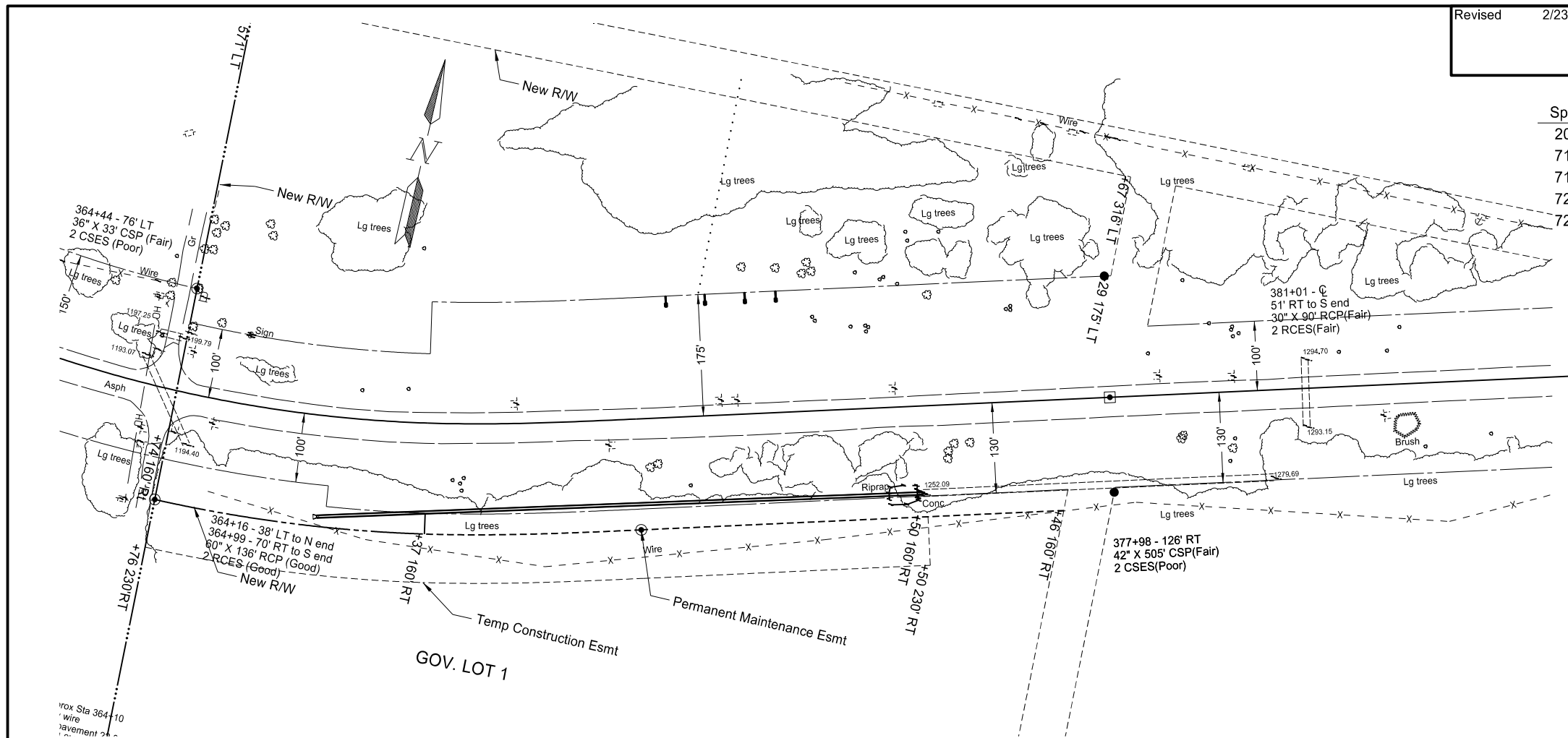
STATE	PROJECT NO.	SECTION NO.	SHEET NO.
ND	SS-2-046(045)067	8	2

REVISED 02/23/2017

SPEC CODE	ITEM DESCRIPTION	UNIT	MAINLINE	TOTAL
-----	-----	-----	-----	-----
714 5835	END SECT CORR STEEL .109IN 42IN	EA	1	1
714 6581	PIPE POLYETHYLENE CORR PERF 6IN DRAIN	LF	200	200
714 9771	UNDERDRAIN PIPE PVC NON-PERFORATED 6IN	LF	40	40
720 0110	RIGHT OF WAY MARKERS	EA	5	5
720 0125	ALIGNMENT MONUMENTS	EA	1	1
720 0130	IRON PIN R/W MONUMENTS	EA	3	3
720 0135	IRON PIN REFERENCE MONUMENTS	EA	2	2
722 0110	MANHOLE 60IN	EA	2	2
722 1110	MANHOLE RISER 60IN	LF	12.4	12.4
754 0110	FLAT SHEET FOR SIGNS-TYPE XI REFL SHEETING	SF	30	30
754 0162	REMOVE & RESET DELINEATORS	EA	4	4
754 0206	STEEL GALV POSTS-TELESCOPING PERFORATED TUBE	LF	100	100
754 0592	RESET SIGN PANEL	EA	2	2

Revised	2/23/17	STATE	PROJECT NO.	SECTION NO.	SHEET NO.
		ND	SS-2-046(045)067	60	1

Spec	Code	Description	Quantity
202	169	Removal of End Section- All Types & Size	1 EA
714	5050	Pipe Corr Steel .064IN 42IN	875 LF
714	5835	End Section Corr Steel .109IN 42IN	1 EA
722	110	Manhole 60IN	2 EA
722	1110	Manhole Riser 60IN	12.4 LF

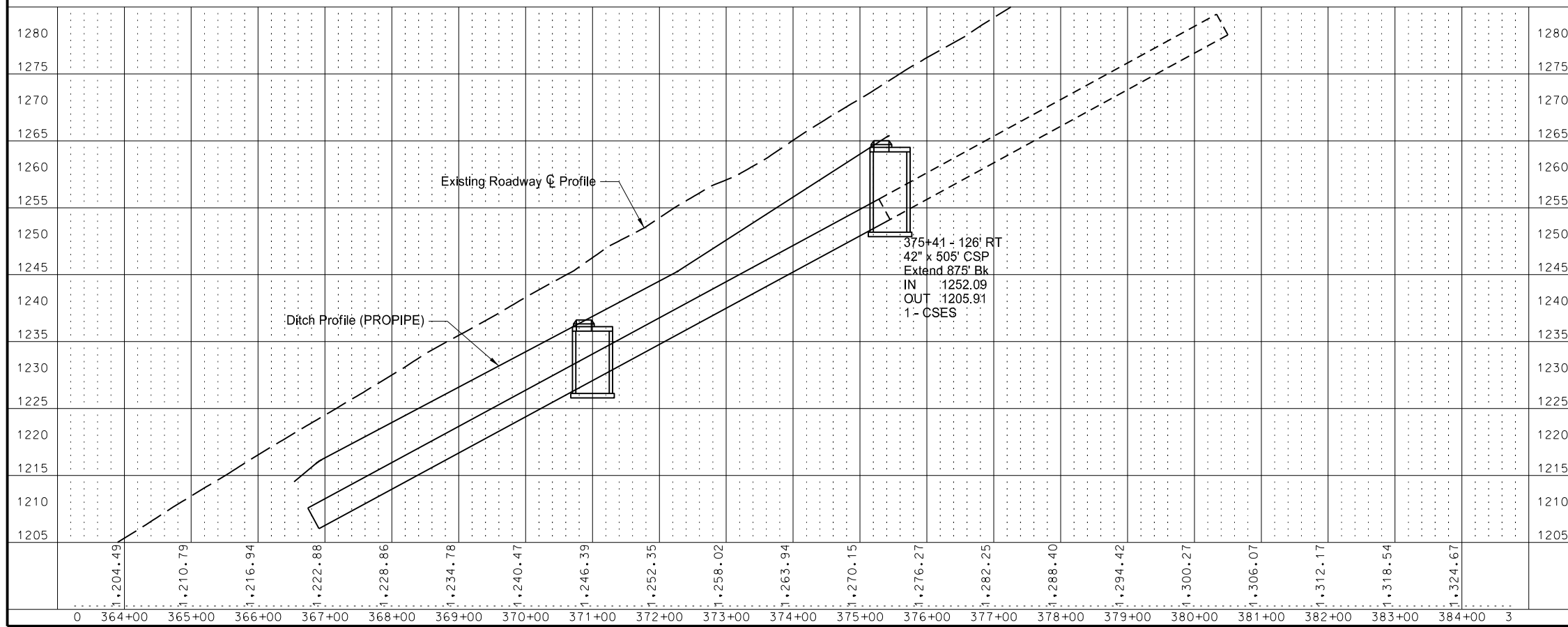


Manhole No. 1 - 60 In.
 Sta. 375+44
 Top Elev. 1260.60
 Base Elev. 1251.27
 Invert Elev. 1251.95
 Riser 7.66 Ft.

42 In. Conduit NE	1252.09
42 In. Conduit SW	1251.95

Manhole No. 2 - 60 In.
 Sta. 371+00
 Top Elev. 1233.66
 Base Elev. 1227.28
 Invert Elev. 1227.96
 Riser 4.71 Ft.

42 In. Conduit NE	1228.11
42 In. Conduit SW	1227.96



This document was originally issued and sealed by Sara A. Cahlin, Registration Number PE- 8397, on 2/23/17 and the original document is stored at the North Dakota Department of Transportation

Plan & Profile
 Slide Repair
 ND 46 - Slide Repair at RP 67.54