



# AUTOMATIC TRAFFIC DATA

October 2021



Prepared by  
**NORTH DAKOTA DEPARTMENT OF TRANSPORTATION**  
BISMARCK, NORTH DAKOTA  
[www.dot.nd.gov](http://www.dot.nd.gov)

**DIRECTOR**  
William T. Panos

PLANNING AND ASSET MANAGEMENT DIVISION  
Scott D. Zainhofsky, P. E., Director

**Principal Author**  
Nikkie Reis, Traffic Data Section

# CONTENTS

## The Fast Lane

### **Part 1 - ALL TRAFFIC**

1. ATR Locations
2. ATR Locations Map
3. WIM Locations Map
4. Average Daily Traffic Graph
5. Average Daily Traffic Year to Date Graph
6. ADT and Percent Change by Functional Class
7. ADT and Percent Change by Station

### **Part 2 -TRUCK TRAFFIC**

1. ATR Locations
2. Average Daily Traffic Graph – Trucks
3. Average Daily Traffic Year to Date Graph – Trucks
4. ADT and Percent Change by Functional Class
5. ADT and Percent Change by Station

More detailed information is available and can be obtained by contacting Nickie Reis, Traffic Data Section of the Planning and Asset Management Division of the North Dakota Department of Transportation, 608 East Boulevard Ave, Bismarck, ND 58505, (701)328-3458 or [nreis@nd.gov](mailto:nreis@nd.gov)

# The Fast Lane

(When you just don't have time for the whole report)

October 2021

*In the following observations, when I talk about increases and decreases, I am referring to how the numbers compared to the same month one year before. For example: October 2021 versus October 2020. We are now breaking this report down into two parts: Part 1 gives overall information about all the vehicles passing the recording devices and Part 2 deals only with truck traffic.*

## Part 1 – ALL TRAFFIC

### Graph

When we total all the traffic at all the ATRs, we see a graphic depiction of how this year's traffic compares to last year's. For this month, the traffic is 11.2 % higher than it was last October.

### Functional Class Groups

When we break the state's highways down into the various classes of highways, we see some interesting facts. Let's look at the following functional classes:

- **Urban Interstate 94** – increased 12.6 %
- **Rural Interstate 94** – increased 15.8 %
- **Urban Interstate 29 (this group is comprised of only one station)** – increased 18.5 %
- **Rural Interstate 29** – increased 10.2 %
- **Rural Principal Arterial** – increased 9.8 %
- **Rural Minor Arterial** – increased 11.2 %
- **Rural Major Collector – State** – increased 9.9 %
- **Rural Major Collector – County** – increased 7.8 %
- **Urban Principal Arterial** – increased 8.0 %
- **Urban Minor Arterial** – increased 5.7 %
- **Urban Collector & Local Urban (this group is comprised of only one station)** - increased 6.9 %

### Individual Stations

Compared to last October, 74 of the 81 stations showed an increase. Of the remaining 7 stations, 7 decreased and 0 had no change.

## Part 2 – TRUCK TRAFFIC

### Graph

When we total just the truck traffic at all the ATRs, we see a graphic depiction of how this year's traffic compares to last year's. For this month, truck traffic is 9.5 % higher than it was last October.

### Functional Class Groups

- **Urban Interstate** – increased 6.1 %
- **Rural Interstate** – increased 8.4 %
- **Rural Principal Arterial** – increased 10.2 %
- **Rural Minor Arterial** – increased 16.6 %
- **Rural Major Collector – State** – increased 24.8 %
- **Rural Major Collector – County** – increased 8.0 %
- **Urban Principal Arterial** – increased 6.0 %

### Individual Stations

Of the 73 stations that could be used to compare trucks, 56 increased from October 2020. Of the remaining 17 stations, 17 decreased and 0 did not change. The western 1/3 saw 24% of its stations decrease compared to 20% in the eastern 1/3 & 26% in the central 1/3.

PART 1

# ALL TRAFFIC

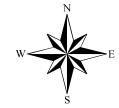
**NORTH DAKOTA DEPARTMENT OF TRANSPORTATION  
ATR LOCATIONS**

<b>STATION</b>	<b>NAME</b>	<b>HIGHWAY</b>	<b>REF POINT</b>	<b>OFF SET</b>	<b>TYPE</b>	<b>LOCATION</b>
<b>URBAN INTERSTATE 94</b>						
217	FARGO (U)	94	352.000	0.3327	Class	RED RIVER BRIDGE
283	BISMARCK (U)	94	158.000	0.8538	Class	0.4 MILES WEST OF US 83 INT.
<b>RURAL INTERSTATE 94</b>						
207	MEDINA	94	231.000	0.2923	Class	0.9 MILES EAST OF MEDINA
223	NEW SALEM	94	126.000	0.8803	Class	0.8 MILES WEST OF ND 31 INT.
245	TOWER CITY	94	312.000	0.5100	Class	2.3 MILES WEST OF BUFFALO INT.
279	PAINTED CANYON	94	34.000	0.6637	Class	7.8 MILES WEST OF US 85 INT.
<b>URBAN INTERSTATE 29</b>						
235	FARGO (U)	29	66.255	0.5725	Class	NORTH OF 12TH AVE.
<b>RURAL INTERSTATE 29</b>						
211	BUXTON	29	112.000	0.8614	Class	4.0 MILES NORTH OF MAYVILLE INT.
243	BOWESMONT	29	196.014	0.5726	Class	0.5 MILES NORTH OF BOWESMONT
265	MOORETON	29	25.000	0.0149	Class	2.5 MILES NORTH OF ND 13
285	DAVENPORT	29	55.000	0.4798	Class	1.3 MILES NORTH OF DAVENPORT INT
<b>RURAL PRINCIPAL ARTERIAL</b>						
201	RAY	2	51.000	0.2986	Class	2.1 MILES WEST OF RAY
203	MAX	83	168.000	0.9400	Class	3.3 MILES SOUTH OF ND 53
205	GWINNER	13	337.000	0.2241	Class	2.1 MILES WEST OF ND 32
215	JAMESTOWN	52	259.000	0.5408	Class	2.5 MILES NORTH OF JAMESTOWN
219	MANDAN	6	55.000	0.8718	Class	11.0 MILES SOUTH OF MANDAN
221	FAIRFIELD	85	80.000	0.8850	Class	5.1 MILES NORTH OF I-94
229	COOPERSTOWN	200	345.000	0.2602	Class	4.0 MILES EAST OF COOPERSTOWN
233	FOXHOLM	52	78.000	0.2600	Class	1.5 MILES SOUTHEAST OF FOXHOLM
237	NEKOMA	1	205.000	0.2195	Class	8.5 MILES SOUTH LANGDON
239	NEW TOWN	23	42.000	0.8986	Class	4.7 MILES EAST OF ND 22
241	BOTTINEAU	5	173.000	0.9523	Class	0.2 MILES WEST OF ND 14
251	HAGUE	83	1.000	0.1144	Class	1.1 MILES NORTH OF SOUTH DAKOTA LINE
253	RUGBY	2	207.000	0.3265	Class	3.5 MILES WEST OF ND 3
255	CROSBY	5	28.000	0.7521	Class	6.0 MILES WEST OF CROSBY
257	WILLISTON	2	2.000	0.3979	Class	2.4 MILES EAST OF MONTANA LINE
261	CARRINGTON	281	117.000	0.9013	Class	5.5 MILES NORTH OF JUNCTION WITH HWY 200
271	GOLDEN VALLEY	200	131.000	0.0000	Class	0.7 MILES EAST OF GOLDEN VALLEY
273	NEW LEIPZIG	21	67.000	0.5500	Class	2.1 MILES WEST OF ND 49
281	SAWYER	52	102.000	0.7136	Class	WEST OF SAWYER
297	WILLISTON_NW	85	193.000	0.7000	Class	NW WILLISTON TRUCK RELIEVER ROUTE
299	KILLDEER200W	200	88.000	0.5200	Class	6.7 MILES WEST OF JCT. ND 22 AND ND 200
303	MICHIGAN	2	296.000	0.6500	Class	4.0 MILES EAST OF ND 1
307	WASHBURN	83	130.000	0.7300	Class	NORTH OF WASHBURN
309	NEWTOWN_EAST	23	58.000	0.7000	Class	8.4 MILES EAST OF NEW TOWN
311	WILLISTON_2N	2	27.000	0.6300	Class	5.2 MILES NORTH OF WILLISTON
315	RYDER_E23___	23	102.000	0.2000	Class	3.3 MILES WEST OF THE JUNCTION WITH US 83
337	BLAISDELL_E2	2	107.000	0.1000	Class	1.0 MILES EAST OF BLAISDELL
339	GRASSY_BUTTE	85	113.000	0.8500	Class	1.3 MILES NORTH OF GRASSY BUTTE
341	ALEXANDER85W	85	162.000	0.2080	Class	1/2 MILE W OF ALEXANDER
343	WATFORD_E23_	23	10.000	0.7000	Class	9.1 MILES EAST OF WATFORD CITY
345	WILLIAMS_N85	85	205.000	0.4800	Class	15.4 MILES NORTH OF WILLISTON
349	BEULAH_S49__	49	91.000	0.7700	Class	10.5 MILES SOUTH OF BEULAH
351	COLUMBUS_W5	5	52.000	0.2000	Class	3.2 MILES EAST OF NOONAN
353	GRANVILLE_E2	2	177.000	0.7600	Class	8.3 MILES EAST OF GRANVILLE
355	MOHALL_W5___	5	121.000	0.9700	Class	3.6 MILES WEST OF MOHALL
419	EMERADO_W2	2	340.000	0.5000	Class	2.5 MILES WEST OF EMERADO
423	HARVEY_N3___	3	165.000	0.5600	Class	5.6 MILES NORTH OF HARVEY
429	LAKOTA_S1___	1	160.000	0.3800	Class	1.6 MILES SOUTH OF LAKOTA
447	DUNSEITH_E__	281	250.000	0.2700	Class	2.95 MILES EAST OF DUNSEITH

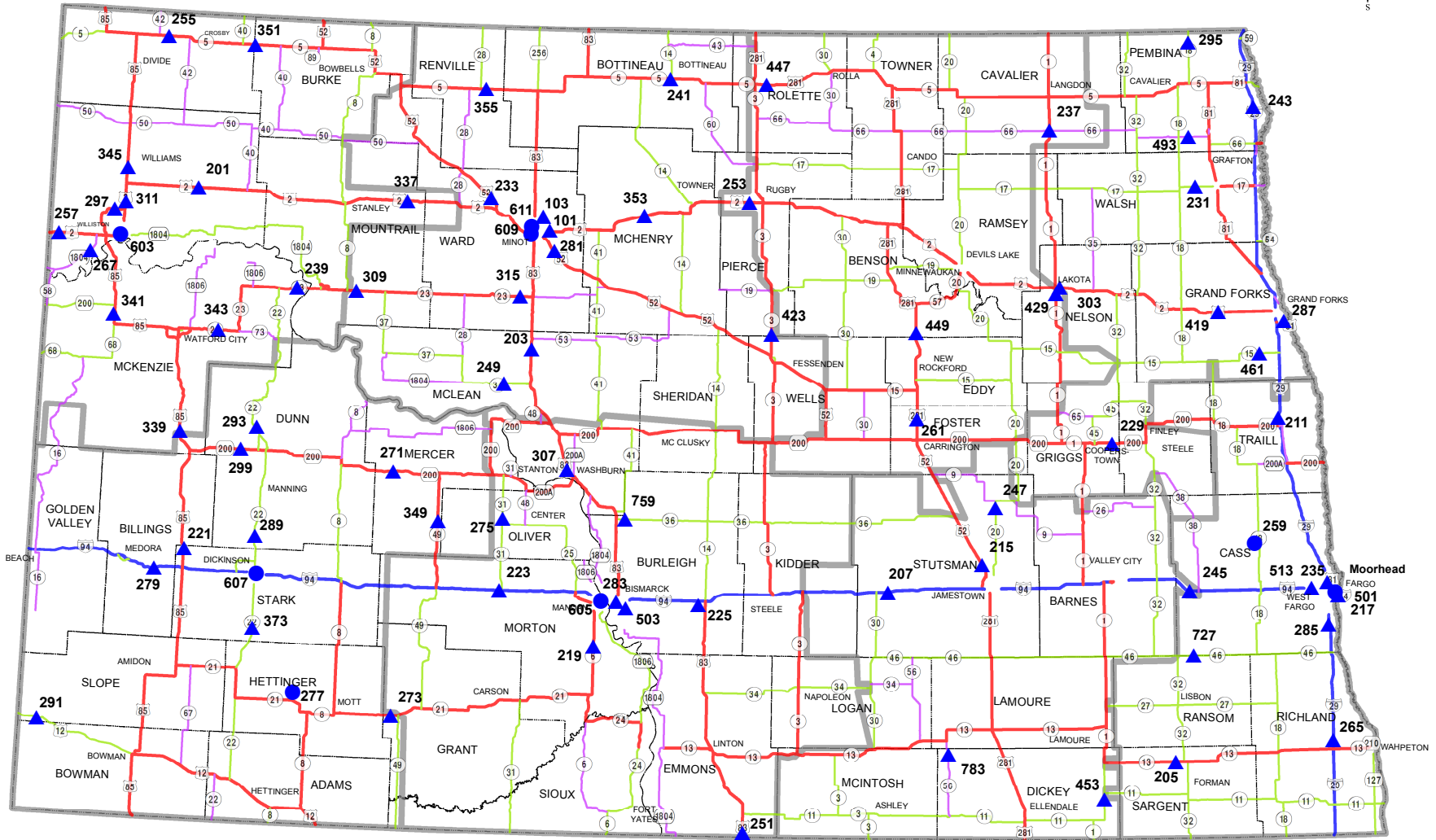
**NORTH DAKOTA DEPARTMENT OF TRANSPORTATION  
ATR LOCATIONS**

<b>STATION</b>	<b>NAME</b>	<b>HIGHWAY</b>	<b>REF POINT</b>	<b>OFF SET</b>	<b>TYPE</b>	<b>LOCATION</b>
<b>RURAL PRINCIPAL ARTERIAL</b>						
449	SHEYENNE_N__	281	141.000	0.4800	Class	2.5 MILES NORTH OF SHEYENNE
<b>RURAL MINOR ARTERIAL</b>						
231	GRAFTON	17	122.000	0.1293	Class	5.5 MILES WEST OF GRAFTON
247	COURTENAY	20	20.000	0.4196	Class	1.8 MILES SOUTH OF ND 9
249	GARRISON	37	54.000	0.9548	Class	1.0 MILES WEST OF GARRISON
275	HANNOVER	31	97.000	0.0758	Class	1.2 MILES NORTH OF HANNOVER
289	MANNING	22	81.000	0.5055	Class	SOUTH OF MANNING
291	MARMARTH	12	4.000	0.8670	Class	1.0 MILE WEST OF MARMARTH
293	KILLDEER	22	112.000	0.1350	Class	5.9 MILES NORTH OF KILLDEER
295	NECHE	18	239.000	0.3300	Class	1.2 MILES SOUTH OF NECHE
373	DICKINSON22S	22	57.000	0.2400	Class	11.4 MILES SOUTH OF DICKINSON
453	OAKES_S1_____	1	13.000	0.3500	Class	3.0 MILES SOUTH OF OAKES
461	THOMPSON_W15	15	129.000	0.0000	Class	3.4 MILES WEST OF THOMPSON
727	ENDERLIN_E46	46	84.000	0.2000	Class	EAST EDGE OF ENDERLIN
759	WILTON_E36__	36	2.000	0.2600	Class	2.3 MILES SE OF WILTON
<b>RURAL MAJOR COLLECTOR-STATE</b>						
267	TRENTON	1804	329.000	0.8846	Class	1.5 MILES NORTHEAST OF TRENTON
493	ST_THOMAS_W_	66	117.000	0.4000	Class	5.7 MILES WEST OF ST. THOMAS
783	KULM_S56_____	56	14.000	0.5800	Class	4.7 MILES SOUTH OF KULM
<b>RURAL MAJOR COLLECTOR-COUNTY</b>						
101	MINOT55ST_NE	5145 C	0.000	0.3000	Class	CMC 5145 - 0.3 MILES NORTH OF US2
103	MINOT46AV_NE	5138 C	8.000	0.2000	Class	CMC 5138 - 2.1 MILES EAST OF US 83
225	STERLING	836 C	14.000	0.2100	Class	CMC 0836 - 1.9 MILES WEST OF US 83
259	AYR				Volume	CMC 0918 - 12.0 MILES EAST OF AYR
277	REGENT				Volume	CMC 2117 - 2.0 MILES NORTH OF ND 21
<b>URBAN PRINCIPAL ARTERIAL</b>						
287	GRAND FORKS	81 B	942.000	0.4092	Class	S. WASHINGTON BETWEEN 24 AND 28 AVE. S.
501	FARGO (U)	81 B	925.000	0.3888	Volume	UNIVERSITY AVE. BET 15 AND 15 1/2 AVE.
503	BISMARCK (U)	810	5.000	0.5750	Class	BIS. EXPWY. SOUTH OF E. MAIN STREET
513	WFARGO_MAIN_ (U)	10 B	933.000	0.4400	Class	MAIN ST. WEST OF 15TH ST NW
603	WILLISTON (U)	2 B	900.000	0.6627	Volume	2ND ST. WEST OF 14TH AVE. WEST
605	MANDAN (U)	94 B	917.043	0.0939	Volume	EAST MAIN ST. WEST OF TWIN CITY DRIVE
<b>URBAN MINOR ARTERIAL</b>						
607	DICKINSON (U)				Volume	9TH ST. EAST BET. 2ND AVE. & 3RD AVE. EAST
611	MINOT (U)				Volume	UNIVERSITY AVE. BET 12TH ST. & 13TH ST. NW.
<b>URBAN COLLECTOR AND LOCAL URBAN</b>						
609	MINOT (U)				Volume	16TH AVE BET. 12TH ST SW. & 17TH AVE. SW.

# Automatic Traffic Recorder (ATR) Locations



(10)



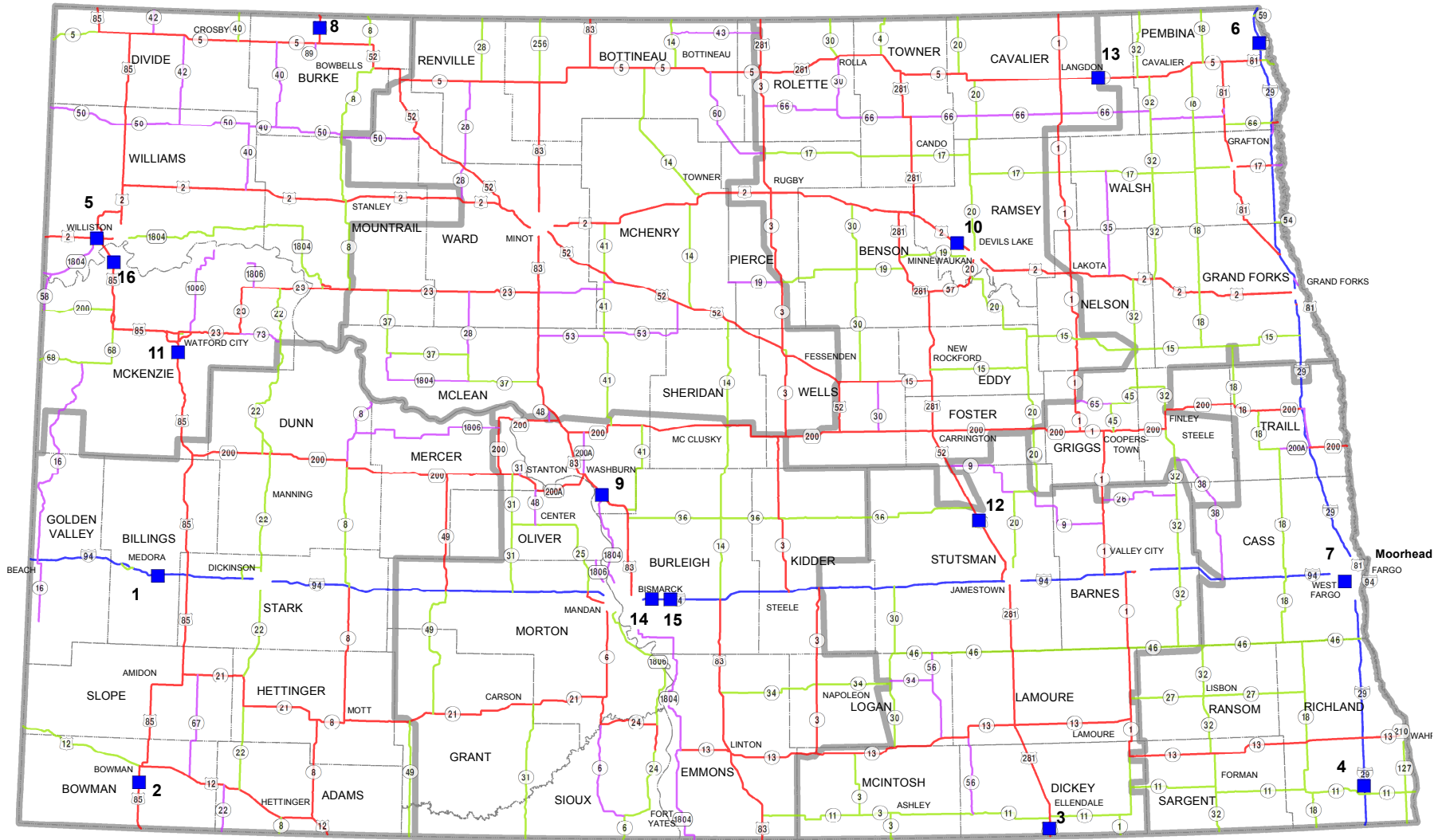
Station Type	Functional Class	Number of ATR Stations
▲ Class	Blue Interstate Rural	8 Rural Interstate
● Volume	Red Principal Arterial Rural	40 Rural Principal Arterial
	Green Minor Arterial Rural	13 Rural Minor Arterial
	Purple Major Collector	8 Rural Major Collector
		3 Urban Interstate
		6 Urban Principal Arterial
		2 Urban Minor Arterial
		1 Urban Collector

Planning & Asset Management Division  
 Traffic Data Section  
 January 2020

File pathway: F:\PLANNING\REIS\shjeflo\Reports\Annual 2017\ArcMap\ATR Locations\_2018.mxd



# Weigh - In - Motion Locations



(11)

**■ WIM Sites**

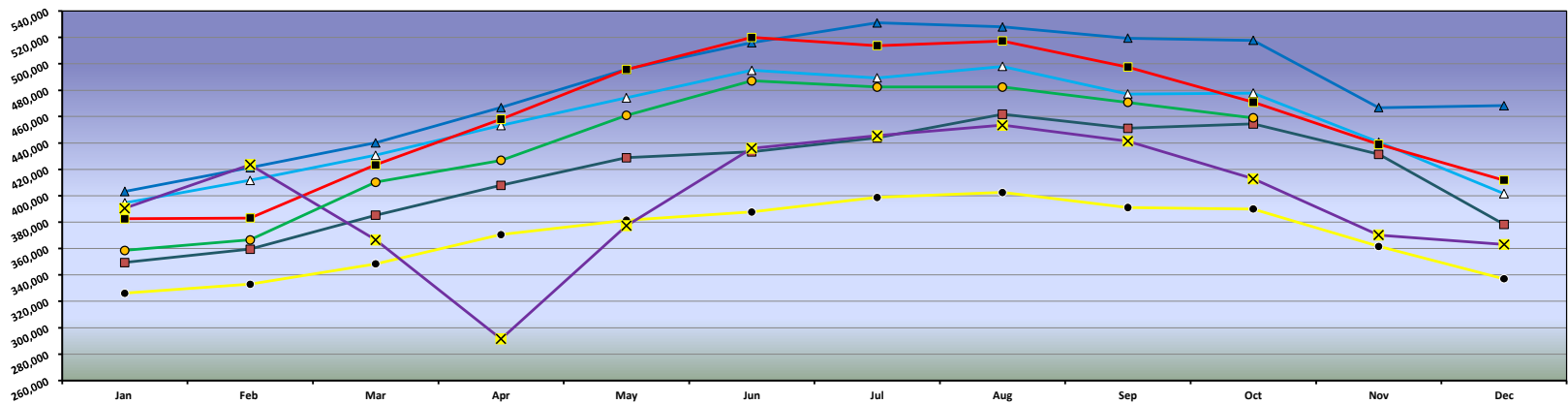
- |               |                |                   |                       |
|---------------|----------------|-------------------|-----------------------|
| 1 - Belfield  | 5 - Williston  | 9 - Washburn      | 13 - Langdon          |
| 2 - Bowman    | 6 - Joliette   | 10 - Devils Lake  | 14 - Apple Creek East |
| 3 - Ellendale | 7 - West Fargo | 11 - Watford City | 15 - Apple Creek West |
| 4 - Wahpeton  | 8 - Portal     | 12 - Jamestown    | 16 - Panger           |

Planning & Asset Management Division  
 Traffic Data Section  
 January 2020

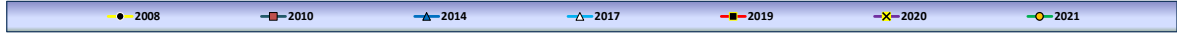
File pathway: F:\PLANNING\NREIS\shjeflo\Reports\Annual 2017\ArcMap\WIM Locations 2017.mxd

Average Daily Traffic  
All ATR's

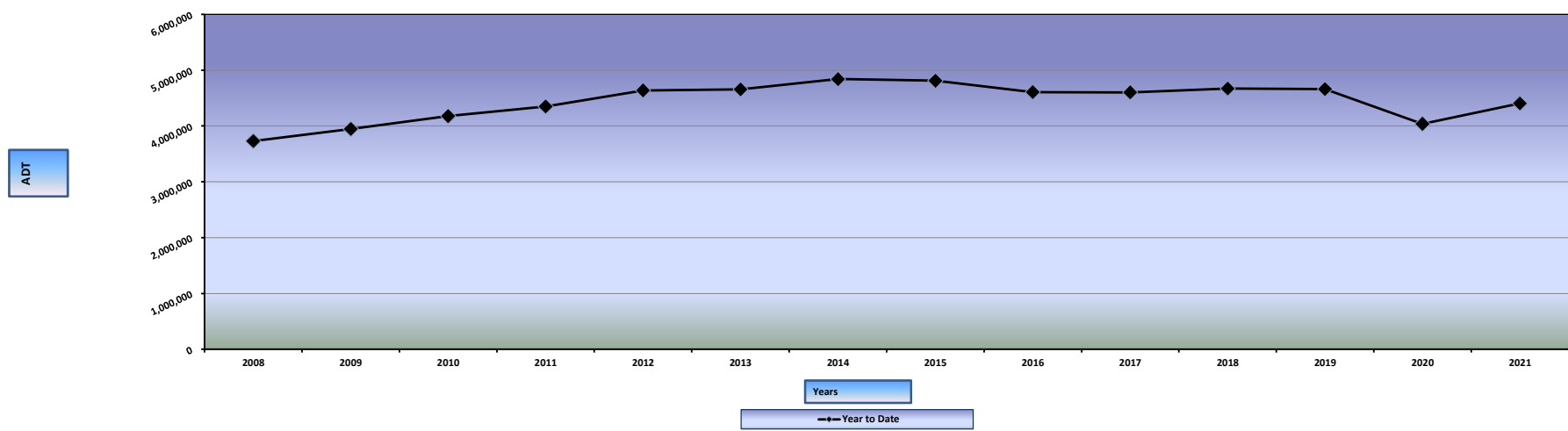
ADT



Years



Average Daily Traffic All ATR's Year to Date (January-October)



**STATE OF NORTH DAKOTA  
AUTOMATIC TRAFFIC RECORDER DATA BY MONTH  
AVERAGE DAILY TRAFFIC AND PERCENT CHANGE BY SYSTEM**

YEAR	JAN	FEB	MAR	APR	MAY	JUN	JUL	AUG	SEP	OCT	NOV	DEC	ANNUAL
<b>URBAN INTERSTATE 94</b>													
2021	84433	87635	96237	100003	106148	111470	109783	110857	108508	106484			102156
2020	87094	95207	78976	62136	84685	99193	101154	103800	100905	94592	86178	84154	89840
% CHG	-3.1%	-8.0%	21.9%	60.9%	25.3%	12.4%	8.5%	6.8%	7.5%	12.6%			
<b>RURAL INTERSTATE 94</b>													
2021	23642	24029	29263	30833	34852	42056	43471	43813	38552	35169			34568
2020	23072	26065	23944	17627	25616	33621	37787	38336	35574	30375	26894	25020	28661
% CHG	2.5%	-7.8%	22.2%	74.9%	36.1%	25.1%	15.0%	14.3%	8.4%	15.8%			
<b>URBAN INTERSTATE 29</b>													
2021	27645	29415	32410	33070	35470	36497	36948	36486	35575	36247			33976
2020	29686	33262	27122	19714	26240	31350	32082	33102	32179	30586	27819	27768	29243
% CHG	-6.9%	-11.6%	19.5%	67.7%	35.2%	16.4%	15.2%	10.2%	10.6%	18.5%			
<b>RURAL INTERSTATE 29</b>													
2021	27260	28337	31818	32881	34681	36081	35673	36373	35328	34297			33273
2020	28715	31966	26996	18481	25243	31403	32510	33993	33392	31111	28430	27861	29175
% CHG	-5.1%	-11.4%	17.9%	77.9%	37.4%	14.9%	9.7%	7.0%	5.8%	10.2%			
<b>RURAL PRINCIPAL ARTERIAL</b>													
2021	83495	82998	95621	99655	110905	118886	119237	117144	113911	110376			105223
2020	102775	110228	97997	78655	97098	109863	112369	112284	109235	100495	87617	86205	100402
% CHG	-18.8%	-24.7%	-2.4%	26.7%	14.2%	8.2%	6.1%	4.3%	4.3%	9.8%			
<b>RURAL MINOR ARTERIAL</b>													
2021	16623	16526	18739	19891	21832	23953	23757	23152	22836	22505			20981
2020	19388	20432	18914	16433	19554	21959	21377	21347	20951	20247	18522	17257	19698
% CHG	-14.3%	-19.1%	-0.9%	21.0%	11.6%	9.1%	11.1%	8.5%	9.0%	11.2%			
<b>RURAL MAJOR COLLECTOR - STATE</b>													
2021	3915	3790	4308	4432	4769	4892	4902	4952	4925	5388			4627
2020	4820	5016	4380	3478	4274	4587	4537	4824	4802	4903	4076	4028	4477
% CHG	-18.8%	-24.4%	-1.6%	27.4%	11.6%	6.6%	8.0%	2.7%	2.6%	9.9%			
<b>RURAL MAJOR COLLECTOR - COUNTY</b>													
2021	4581	4495	5049	5407	5948	5943	5992	6079	5930	5961			5539
2020	4314	4585	4343	4306	5518	5838	5543	5895	5822	5531	4815	4579	5091
% CHG	6.2%	-2.0%	16.3%	25.6%	7.8%	1.8%	8.1%	3.1%	1.9%	7.8%			
<b>URBAN PRINCIPAL ARTERIAL</b>													
2021	80261	82437	89366	92933	98091	99163	94701	95370	96642	94297			92326
2020	83402	89176	77526	65494	82109	90612	90340	92376	90809	87287	79350	79532	84001
% CHG	-3.8%	-7.6%	15.3%	41.9%	19.5%	9.4%	4.8%	3.2%	6.4%	8.0%			
<b>URBAN MINOR ARTERIAL</b>													
2021	4610	4695	5049	5231	5490	5462	5128	5515	5887	5665			5273
2020	4990	5275	4354	3474	4443	4952	5165	5011	5276	5358	4410	4356	4755
% CHG	-7.6%	-11.0%	16.0%	50.6%	23.6%	10.3%	-0.7%	10.1%	11.6%	5.7%			

STATE OF NORTH DAKOTA  
 AUTOMATIC TRAFFIC RECORDER DATA BY MONTH  
 AVERAGE DAILY TRAFFIC AND PERCENT CHANGE BY SYSTEM

YEAR	JAN	FEB	MAR	APR	MAY	JUN	JUL	AUG	SEP	OCT	NOV	DEC	ANNUAL
<b>URBAN COLLECTOR &amp; LOCAL URBAN</b>													
2021	2177	2172	2427	2558	2742	2750	2761	2674	2698	2619			2558
2020	2248	2383	2017	1725	2541	2635	2592	2591	2519	2449	2148	2347	2350
% CHG	-3.2%	-8.9%	20.3%	48.3%	7.9%	4.4%	6.5%	3.2%	7.1%	6.9%			











**STATE OF NORTH DAKOTA  
AUTOMATIC TRAFFIC RECORDER DATA BY MONTH  
AVERAGE DAILY TRAFFIC AND PERCENT CHANGE BY STATION**

DIRECTION	YEAR	JAN	FEB	MAR	APR	MAY	JUN	JUL	AUG	SEP	OCT	NOV	DEC	ANNUAL
<b>RURAL PRINCIPAL ARTERIAL</b>														
<b>STATION: 229 - COOPERSTOWN</b>														
<b>LOCATION: HIGHWAY 200 - 4.0 MILES EAST OF COOPERSTOWN</b>														
WEST	2021	307	307	363	395	453	506	484	467	513	489			
	2020	299	336	295	287	373	433	443	431	477	426	338	321	372
	% CHG MO.	2.7%	-8.6%	23.1%	37.6%	21.4%	16.9%	9.3%	8.4%	7.5%	14.8%			
	% CHG YR.	2.7%	-3.3%	5.1%	12.7%	14.8%	15.2%	14.2%	13.3%	12.5%	12.7%			
EAST & WEST	2021	635	627	752	819	926	1034	991	963	1050	1006			
	2020	619	690	609	593	757	897	901	901	986	872	696	664	765
	% CHG MO.	2.6%	-9.1%	23.5%	38.1%	22.3%	15.3%	10.0%	6.9%	6.5%	15.4%			
	% CHG YR.	2.6%	-3.6%	5.0%	12.8%	15.0%	15.1%	14.2%	13.1%	12.1%	12.5%			
<b>STATION: 233 - FOXHOLM</b>														
<b>LOCATION: HIGHWAY 52 - 1.5 MILES SOUTHEAST OF FOXHOLM</b>														
EAST	2021	843	854	992	1034	1127	1141	1113	1075	1119	1153			
	2020	916	991	842	734	970	1047	1023	1030	1095	1040	923	887	958
	% CHG MO.	-8.0%	-13.8%	17.8%	40.9%	16.2%	9.0%	8.8%	4.4%	2.2%	10.9%			
	% CHG YR.	-8.0%	-11.0%	-2.2%	6.9%	8.9%	8.9%	8.3%	8.3%	7.5%	7.9%			
WEST	2021	855	883	1043	1071	1178	1188	1141	1124	1162	1170			
	2020	923	1005	905	750	981	1069	1057	1067	1108	1067	952	930	985
	% CHG MO.	-7.4%	-12.1%	15.2%	42.8%	20.1%	11.1%	7.9%	5.3%	4.9%	9.7%			
	% CHG YR.	-7.4%	-9.9%	-1.8%	7.5%	10.2%	10.4%	10.0%	9.4%	8.8%	8.9%			
EAST & WEST	2021	1698	1737	2035	2105	2305	2329	2254	2199	2281	2323			
	2020	1839	1996	1747	1484	1951	2116	2080	2097	2203	2107	1875	1817	1943
	% CHG MO.	-7.7%	-13.0%	16.5%	41.8%	18.1%	10.1%	8.4%	4.9%	3.5%	10.3%			
	% CHG YR.	-7.7%	-10.4%	-2.0%	7.2%	9.6%	9.7%	9.5%	8.8%	8.2%	8.4%			
<b>STATION: 237 - NEKOMA</b>														
<b>LOCATION: HIGHWAY 1 - 8.5 MILES SOUTH LANGDON</b>														
NORTH	2021	330	334	366	408	448	470	457	488	492	466			
	2020	348	345	298	280	401	463	451	481	522	458	347	348	395
	% CHG MO.	-5.2%	-3.2%	22.8%	45.7%	11.7%	1.5%	1.3%	1.5%	-5.7%	1.7%			
	% CHG YR.	-5.2%	-4.2%	3.9%	13.1%	12.8%	10.4%	8.8%	7.6%	5.7%	5.2%			
SOUTH	2021	341	336	371	418	460	474	468	494	504	467			
	2020	354	352	298	279	411	473	465	481	532	458	355	360	402
	% CHG MO.	-3.7%	-4.5%	24.5%	49.8%	11.9%	0.2%	0.6%	2.7%	-5.3%	2.0%			
	% CHG YR.	-3.7%	-4.1%	4.4%	14.3%	13.7%	10.8%	9.0%	8.0%	6.1%	5.6%			
NORTH & SOUTH	2021	671	670	737	826	908	944	925	982	996	933			
	2020	702	697	596	559	812	936	916	962	1054	916	702	708	797
	% CHG MO.	-4.4%	-3.9%	23.7%	47.8%	11.8%	0.9%	1.0%	2.1%	-5.5%	1.9%			
	% CHG YR.	-4.4%	-4.1%	4.2%	13.7%	13.3%	10.6%	8.9%	7.8%	5.9%	5.4%			
<b>STATION: 239 - NEW TOWN</b>														
<b>LOCATION: HIGHWAY 23 - 4.7 MILES EAST OF ND 22</b>														
EAST	2021	1885	1882	2197	2385	2636	2710	2710	2752	2765	2635			
	2020	3114	3462	3052	2049	1983	2234	2339	2405	2388	2351	2081	2062	2460
	% CHG MO.	-39.5%	-45.6%	-28.0%	16.4%	32.9%	21.3%	15.9%	14.4%	15.8%	12.1%			
	% CHG YR.	-39.5%	-42.7%	-38.1%	-28.5%	-19.6%	-13.8%	-10.0%	-7.2%	-4.8%	-3.2%			
WEST	2021	1929	1914	2242	2429	2670	2717	2713	2775	2791	2659			
	2020	3205	3571	3153	2109	2016	2278	2403	2456	2425	2406	2130	2112	2522
	% CHG MO.	-39.8%	-46.4%	-28.9%	15.2%	32.4%	19.3%	12.9%	13.0%	15.1%	10.5%			
	% CHG YR.	-39.8%	-43.3%	-38.7%	-29.3%	-20.4%	-14.9%	-11.3%	-8.5%	-6.1%	-4.5%			
EAST & WEST	2021	3814	3796	4439	4814	5306	5427	5423	5527	5556	5294			
	2020	6319	7033	6205	4158	3999	4512	4742	4861	4813	4757	4211	4174	4982
	% CHG MO.	-39.6%	-46.0%	-28.5%	15.8%	32.7%	20.3%	14.4%	13.7%	15.4%	11.3%			
	% CHG YR.	-39.6%	-43.0%	-38.4%	-28.9%	-20.0%	-14.4%	-10.7%	-7.8%	-5.4%	-3.9%			
<b>STATION: 241 - BOTTINEAU</b>														
<b>LOCATION: HIGHWAY 5 - 0.2 MILES WEST OF ND 14</b>														
EAST	2021	497	468	546	563	650	706	704	732	680	628			
	2020	494	541	454	409	615	705	741	722	733	599	481	500	583
	% CHG MO.	0.6%	-13.5%	20.3%	37.7%	5.7%	0.1%	-5.0%	1.4%	-7.2%	4.8%			
	% CHG YR.	0.6%	-6.8%	1.5%	9.3%	8.4%	6.6%	4.4%	4.0%	2.4%	2.7%			
WEST	2021	517	486	565	580	681	725	738	756	711	652			
	2020	507	555	460	421	628	703	757	747	749	617	498	513	596
	% CHG MO.	2.0%	-12.4%	22.8%	37.8%	8.4%	3.1%	-2.5%	1.2%	-5.1%	5.7%			
	% CHG YR.	2.0%	-5.6%	3.0%	10.6%	10.0%	8.6%	6.5%	5.7%	4.2%	4.3%			

**STATE OF NORTH DAKOTA  
AUTOMATIC TRAFFIC RECORDER DATA BY MONTH  
AVERAGE DAILY TRAFFIC AND PERCENT CHANGE BY STATION**

DIRECTION	YEAR	JAN	FEB	MAR	APR	MAY	JUN	JUL	AUG	SEP	OCT	NOV	DEC	ANNUAL
<b>RURAL PRINCIPAL ARTERIAL</b>														
<b>STATION: 241 - BOTTINEAU</b>														
<b>LOCATION: HIGHWAY 5 - 0.2 MILES WEST OF ND 14</b>														
EAST & WEST	2021	1014	954	1111	1143	1331	1431	1442	1488	1391	1280			
	2020	1001	1096	914	830	1243	1408	1498	1469	1482	1216	979	1013	1179
	% CHG MO.	1.3%	-13.0%	21.6%	37.7%	7.1%	1.6%	-3.7%	1.3%	-6.1%	5.3%			
	% CHG YR.	1.3%	-6.2%	2.3%	9.9%	9.2%	7.6%	5.5%	4.8%	3.3%	3.5%			
<b>STATION: 251 - HAGUE</b>														
<b>LOCATION: HIGHWAY 83 - 1.1 MILES NORTH OF SOUTH DAKOTA LINE</b>														
NORTH	2021	347	324	398	407	471	502	478	452	428	442			
	2020	332	380	383	321	397	441	456	467	433	413	369	348	395
	% CHG MO.	4.5%	-14.7%	3.9%	26.8%	18.6%	13.8%	4.8%	-3.2%	-1.2%	7.0%			
	% CHG YR.	4.5%	-5.8%	-2.4%	4.2%	7.4%	8.7%	8.0%	6.4%	5.5%	5.6%			
SOUTH	2021	352	325	385	404	462	500	477	457	435	446			
	2020	353	379	344	306	397	444	449	457	444	418	385	353	394
	% CHG MO.	-0.3%	-14.2%	11.9%	32.0%	16.4%	12.6%	6.2%	0.0%	-2.0%	6.7%			
	% CHG YR.	-0.3%	-7.5%	-1.3%	6.1%	8.4%	9.2%	8.7%	7.4%	6.3%	6.3%			
NORTH & SOUTH	2021	699	649	783	811	933	1002	955	909	863	888			
	2020	685	759	727	627	794	885	905	924	877	831	754	701	789
	% CHG MO.	2.0%	-14.5%	7.7%	29.3%	17.5%	13.2%	5.5%	-1.6%	-1.6%	6.9%			
	% CHG YR.	2.0%	-6.6%	-1.8%	5.1%	7.9%	8.9%	8.4%	6.9%	5.9%	6.0%			
<b>STATION: 253 - RUGBY</b>														
<b>LOCATION: HIGHWAY 2 - 3.5 MILES WEST OF ND 3</b>														
EAST	2021	1076	1088	1341	1331	1447	1530	1614	1519	1463	1421			
	2020	1158	1237	1023	814	1193	1366	1456	1440	1388	1247	1067	1137	1211
	% CHG MO.	-7.1%	-12.0%	31.1%	63.5%	21.3%	12.0%	10.9%	5.5%	5.4%	14.0%			
	% CHG YR.	-7.1%	-9.6%	2.5%	14.3%	15.8%	15.0%	14.3%	13.0%	12.0%	12.2%			
WEST	2021	1075	1077	1326	1319	1417	1520	1634	1528	1441	1414			
	2020	1154	1229	1021	802	1183	1358	1427	1427	1374	1239	1066	1126	1201
	% CHG MO.	-6.8%	-12.4%	29.9%	64.5%	19.8%	11.9%	14.5%	7.1%	4.9%	14.1%			
	% CHG YR.	-6.8%	-9.7%	2.2%	14.1%	15.3%	14.6%	14.6%	13.5%	12.4%	12.6%			
EAST & WEST	2021	2151	2165	2667	2650	2864	3050	3248	3047	2904	2835			
	2020	2312	2466	2044	1616	2376	2724	2883	2867	2762	2486	2133	2263	2411
	% CHG MO.	-7.0%	-12.2%	30.5%	64.0%	20.5%	12.0%	12.7%	6.3%	5.1%	14.0%			
	% CHG YR.	-7.0%	-9.7%	2.4%	14.2%	15.6%	14.8%	14.5%	13.2%	12.2%	12.4%			
<b>STATION: 255 - CROSBY</b>														
<b>LOCATION: HIGHWAY 5 - 6.0 MILES WEST OF CROSBY</b>														
EAST	2021	305	308	351	368	401	402	425	398	413	426			
	2020	342	365	332	301	368	365	363	404	377	391	323	324	355
	% CHG MO.	-10.8%	-15.6%	5.7%	22.3%	9.0%	10.1%	17.1%	-1.5%	9.5%	9.0%			
	% CHG YR.	-10.8%	-13.3%	-7.2%	-0.6%	1.5%	3.0%	5.1%	4.2%	4.8%	5.2%			
WEST	2021	302	305	348	372	404	407	422	403	416	432			
	2020	344	363	323	307	368	362	364	410	378	389	322	324	355
	% CHG MO.	-12.2%	-16.0%	7.7%	21.2%	9.8%	12.4%	15.9%	-1.7%	10.1%	11.1%			
	% CHG YR.	-12.2%	-14.1%	-7.3%	-0.7%	1.5%	3.4%	5.3%	4.3%	5.0%	5.6%			
EAST & WEST	2021	607	613	699	740	805	809	847	801	829	858			
	2020	686	728	655	608	736	727	727	814	755	780	645	648	709
	% CHG MO.	-11.5%	-15.8%	6.7%	21.7%	9.4%	11.3%	16.5%	-1.6%	9.8%	10.0%			
	% CHG YR.	-11.5%	-13.7%	-7.2%	-0.7%	1.5%	3.2%	5.2%	4.2%	4.9%	5.4%			
<b>STATION: 257 - WILLISTON</b>														
<b>LOCATION: HIGHWAY 2 - 2.4 MILES EAST OF MONTANA LINE</b>														
EAST	2021	728	712	802 *	903	950	961	942	961	937	897			
	2020	940	963	825	574	928	969	978	945	875	824	761	796	865
	% CHG MO.	-22.6%	-26.1%	-2.8%	57.3%	2.4%	-0.8%	-3.7%	1.7%	7.1%	8.9%			
	% CHG YR.	-22.6%	-24.3%	-17.8%	-4.8%	-3.2%	-2.8%	-2.9%	-2.3%	-1.3%	-0.3%			
WEST	2021	746	737	831 *	914	973	984	970	980	974	952			
	2020	955	983	853	605	979	1006	1000	954	905	847	779	833	892
	% CHG MO.	-21.9%	-25.0%	-2.6%	51.1%	-0.6%	-2.2%	-3.0%	2.7%	7.6%	12.4%			
	% CHG YR.	-21.9%	-23.5%	-17.1%	-4.9%	-4.0%	-3.6%	-3.5%	-2.7%	-1.6%	-0.3%			
EAST & WEST	2021	1474	1449	1633	1817	1923	1945	1912	1941	1911	1849			
	2020	1895	1946	1678	1179	1907	1975	1978	1899	1780	1671	1540	1629	1756
	% CHG MO.	-22.2%	-25.5%	-2.7%	54.1%	0.8%	-1.5%	-3.3%	2.2%	7.4%	10.7%			
	% CHG YR.	-22.2%	-23.9%	-17.4%	-4.9%	-3.6%	-3.2%	-3.2%	-2.5%	-1.4%	-0.3%			

STATE OF NORTH DAKOTA  
AUTOMATIC TRAFFIC RECORDER DATA BY MONTH  
AVERAGE DAILY TRAFFIC AND PERCENT CHANGE BY STATION

DIRECTION	YEAR	JAN	FEB	MAR	APR	MAY	JUN	JUL	AUG	SEP	OCT	NOV	DEC	ANNUAL	
RURAL PRINCIPAL ARTERIAL															
<b>STATION: 261 - CARRINGTON</b>															
<b>LOCATION: HIGHWAY 281 - 5.5 MILES NORTH OF JUNCTION WITH HWY 200</b>															
NORTH	2021	651	656	784	857	935	984	961	989 *	935	886				
	2020	667	764	674	579	804	906	870	844	859	795	689	684	761	
	% CHG MO.	-2.4%	-14.1%	16.3%	48.0%	16.3%	8.6%	10.5%	17.2%	8.8%	11.4%				
	% CHG YR.	-2.4%	-8.7%	-0.7%	9.8%	11.3%	10.8%	10.7%	11.6%	11.3%	11.3%				
SOUTH	2021	651	658	786	855	949	1019	952	989 *	928	864				
	2020	671	759	668	574	802	899	877	837	855	800	691	683	760	
	% CHG MO.	-3.0%	-13.3%	17.7%	49.0%	18.3%	13.3%	8.6%	18.2%	8.5%	8.0%				
	% CHG YR.	-3.0%	-8.5%	-0.1%	10.4%	12.2%	12.5%	11.8%	12.7%	12.2%	11.7%				
NORTH & SOUTH	2021	1302	1314	1570	1712	1884	2003	1913	1978	1863	1750				
	2020	1338	1523	1342	1153	1606	1805	1747	1681	1714	1595	1380	1367	1521	
	% CHG MO.	-2.7%	-13.7%	17.0%	48.5%	17.3%	11.0%	9.5%	17.7%	8.7%	9.7%				
	% CHG YR.	-2.7%	-8.6%	-0.4%	10.1%	11.8%	11.6%	11.3%	12.1%	11.7%	11.5%				
<b>STATION: 271 - GOLDEN VALLEY</b>															
<b>LOCATION: HIGHWAY 200 - 0.7 MILES EAST OF GOLDEN VALLEY</b>															
EAST	2021	444 *	431 *	501 *	557 *	615 *	677 *	650 *	650 *	618 *	578 *				
	2020	459 *	495 *	439 *	415 *	562 *	653 *	727 *	696 *	632 *	569 *	533 *	516 *	558	
	% CHG MO.	-3.3%	-12.9%	14.1%	34.2%	9.4%	3.7%	-10.6%	-6.6%	-2.2%	1.6%				
	% CHG YR.	-3.3%	-8.3%	-1.2%	6.9%	7.5%	6.7%	3.3%	1.8%	1.3%	1.3%				
WEST	2021	444 *	431 *	501 *	557 *	615 *	677 *	650 *	650 *	618 *	578 *				
	2020	459 *	495 *	439 *	415 *	562 *	653 *	727 *	696 *	632 *	569 *	533 *	516 *	558	
	% CHG MO.	-3.3%	-12.9%	14.1%	34.2%	9.4%	3.7%	-10.6%	-6.6%	-2.2%	1.6%				
	% CHG YR.	-3.3%	-8.3%	-1.2%	6.9%	7.5%	6.7%	3.3%	1.8%	1.3%	1.3%				
EAST & WEST	2021	888	862	1002	1114	1230	1354	1300	1300	1236	1156				
	2020	918	990	878	830	1124	1306	1454	1392	1264	1138	1066	1032	1116	
	% CHG MO.	-3.3%	-12.9%	14.1%	34.2%	9.4%	3.7%	-10.6%	-6.6%	-2.2%	1.6%				
	% CHG YR.	-3.3%	-8.3%	-1.2%	6.9%	7.5%	6.7%	3.3%	1.8%	1.3%	1.3%				
<b>STATION: 273 - NEW LEIPZIG</b>															
<b>LOCATION: HIGHWAY 21 - 2.1 MILES WEST OF ND 49</b>															
EAST	2021	150	147	164	174	189	207	196	212	198	196				
	2020	145	153	136	142	184	205	202	211	203	193	173	155	175	
	% CHG MO.	3.4%	-3.9%	20.6%	22.5%	2.7%	1.0%	-3.0%	0.5%	-2.5%	1.6%				
	% CHG YR.	3.4%	-0.3%	6.2%	10.2%	8.4%	6.8%	5.1%	4.4%	3.5%	3.3%				
WEST	2021	153	151	169	181	192	212	201	209	199	197				
	2020	147	157	143	145	189	209	205	216	209	195	176	158	179	
	% CHG MO.	4.1%	-3.8%	18.2%	24.8%	1.6%	1.4%	-2.0%	-3.2%	-4.8%	1.0%				
	% CHG YR.	4.1%	0.0%	5.8%	10.5%	8.3%	6.9%	5.4%	4.0%	2.9%	2.7%				
EAST & WEST	2021	303	298	333	355	381	419	397	421	397	393				
	2020	292	310	279	287	373	414	407	427	412	388	349	313	354	
	% CHG MO.	3.8%	-3.9%	19.4%	23.7%	2.1%	1.2%	-2.5%	-1.4%	-3.6%	1.3%				
	% CHG YR.	3.8%	-0.2%	6.0%	10.4%	8.4%	6.9%	5.2%	4.2%	3.2%	3.0%				
<b>STATION: 281 - SAWYER</b>															
<b>LOCATION: HIGHWAY 52 - WEST OF SAWYER</b>															
EAST	2021	1985	1982	2297	2373	2580	2604	2606	2534	2533	2498				
	2020	1966	2113	1898	1747	2273	2454	2404	2430	2450	2375	2052	2031	2183	
	% CHG MO.	1.0%	-6.2%	21.0%	35.8%	13.5%	6.1%	8.4%	4.3%	3.4%	5.2%				
	% CHG YR.	1.0%	-2.7%	4.8%	11.8%	12.2%	11.0%	10.6%	9.7%	8.9%	8.5%				
WEST	2021	2007	2014	2349	2428	2648	2672	2679	2532	2580	2540				
	2020	2007	2142	1952	1775	2305	2495	2417	2433	2475	2387	2067	2042	2208	
	% CHG MO.	0.0%	-6.0%	20.3%	36.8%	14.9%	7.1%	10.8%	4.1%	4.2%	6.4%				
	% CHG YR.	0.0%	-3.1%	4.4%	11.7%	12.4%	11.4%	11.3%	10.3%	9.5%	9.2%				
EAST & WEST	2021	3992	3996	4646	4801	5228	5276	5285	5066	5113	5038				
	2020	3973	4255	3850	3522	4578	4949	4821	4863	4925	4762	4119	4073	4391	
	% CHG MO.	0.5%	-6.1%	20.7%	36.3%	14.2%	6.6%	9.6%	4.2%	3.8%	5.8%				
	% CHG YR.	0.5%	-2.9%	4.6%	11.8%	12.3%	11.2%	10.9%	10.0%	9.2%	8.9%				
<b>STATION: 297 - WILLISTON_NW</b>															
<b>LOCATION: HIGHWAY 85 - NW WILLISTON TRUCK RELIEVER ROUTE</b>															
NORTH	2021	1405	1419	1515	1555	1659	1869	1857	1897	1872	1863				
	2020	2538	2521	2288	1798	1878	1938	1912	2056	1995	1853	1584	1456	1985	
	% CHG MO.	-44.6%	-43.7%	-33.8%	-13.5%	-11.7%	-3.6%	-2.9%	-7.7%	-6.2%	0.5%				
	% CHG YR.	-44.6%	-44.2%	-40.9%	-35.5%	-31.5%	-27.3%	-24.2%	-22.2%	-20.5%	-18.6%				

STATE OF NORTH DAKOTA  
AUTOMATIC TRAFFIC RECORDER DATA BY MONTH  
AVERAGE DAILY TRAFFIC AND PERCENT CHANGE BY STATION

DIRECTION	YEAR	JAN	FEB	MAR	APR	MAY	JUN	JUL	AUG	SEP	OCT	NOV	DEC	ANNUAL	
RURAL PRINCIPAL ARTERIAL															
<b>STATION: 297 - WILLISTON_NW</b>															
<b>LOCATION: HIGHWAY 85 - NW WILLISTON TRUCK RELIEVER ROUTE</b>															
SOUTH	2021	1426	1451	1532	1584	1685	1875	1904	1941	1927	1909				
	2020	2569	2520	2318	1813	1908	1963	1938	2038	2034	1870	1611	1474	2005	
	% CHG MO.	-44.5%	-42.4%	-33.9%	-12.6%	-11.7%	-4.5%	-1.8%	-4.8%	-5.3%	2.1%				
	% CHG YR.	-44.5%	-43.5%	-40.5%	-35.0%	-31.0%	-27.0%	-23.8%	-21.5%	-19.8%	-17.8%				
NORTH & SOUTH	2021	2831	2870	3047	3139	3344	3744	3761	3838	3799	3772				
	2020	5107	5041	4606	3611	3786	3901	3850	4094	4029	3723	3195	2930	3989	
	% CHG MO.	-44.6%	-43.1%	-33.8%	-13.1%	-11.7%	-4.0%	-2.3%	-6.3%	-5.7%	1.3%				
	% CHG YR.	-44.6%	-43.8%	-40.7%	-35.3%	-31.2%	-27.2%	-24.0%	-21.8%	-20.1%	-18.2%				
<b>STATION: 299 - KILLDEER200W</b>															
<b>LOCATION: HIGHWAY 200 - 6.7 MILES WEST OF JCT. ND 22 AND ND 200</b>															
EAST	2021	548	559	640	676	777	771	849	821	871	848				
	2020	796	901	845	645	606	639	669	660	688	668	606	562	690	
	% CHG MO.	-31.2%	-38.0%	-24.3%	4.8%	28.2%	20.7%	26.9%	24.4%	26.6%	26.9%				
	% CHG YR.	-31.2%	-34.8%	-31.3%	-24.0%	-15.6%	-10.4%	-5.5%	-2.1%	1.0%	3.4%				
WEST	2021	554	568	640	674	769	781	852	827	869	855				
	2020	817	916	860	659	621	644	682	670	723	679	615	562	704	
	% CHG MO.	-32.2%	-38.0%	-25.6%	2.3%	23.8%	21.3%	24.9%	23.4%	20.2%	25.9%				
	% CHG YR.	-32.2%	-35.3%	-32.0%	-25.1%	-17.2%	-11.8%	-6.9%	-3.5%	-0.9%	1.6%				
EAST & WEST	2021	1102	1127	1280	1350	1546	1552	1701	1648	1740	1703				
	2020	1613	1817	1705	1304	1227	1283	1351	1330	1411	1347	1221	1124	1394	
	% CHG MO.	-31.7%	-38.0%	-24.9%	3.5%	26.0%	21.0%	25.9%	23.9%	23.3%	26.4%				
	% CHG YR.	-31.7%	-35.0%	-31.7%	-24.5%	-16.4%	-11.1%	-6.2%	-2.8%	0.0%	2.5%				
<b>STATION: 303 - MICHIGAN</b>															
<b>LOCATION: HIGHWAY 2 - 4.0 MILES EAST OF ND 1</b>															
EAST	2021	1428	1425	1674	1719	2043	2258	2222	2134	2062	1965				
	2020	1496	1627	1295	981	1627	2067	2141	2056	1951	1703	1398	1449	1649	
	% CHG MO.	-4.5%	-12.4%	29.3%	75.2%	25.6%	9.2%	3.8%	3.8%	5.7%	15.4%				
	% CHG YR.	-4.5%	-8.6%	2.5%	15.7%	18.0%	16.0%	13.7%	12.1%	11.3%	11.7%				
WEST	2021	1413	1419	1669	1716	2054	2244	2234	2118	2036	1920				
	2020	1467	1625	1330	986	1605	2082	2125	2028	1943	1687	1390	1453	1643	
	% CHG MO.	-3.7%	-12.7%	25.5%	74.0%	28.0%	7.8%	5.1%	4.4%	4.8%	13.8%				
	% CHG YR.	-3.7%	-8.4%	1.8%	15.0%	17.9%	15.6%	13.6%	12.2%	11.3%	11.5%				
EAST & WEST	2021	2841	2844	3343	3435	4097	4502	4456	4252	4098	3885				
	2020	2963	3252	2625	1967	3232	4149	4266	4084	3894	3390	2788	2902	3293	
	% CHG MO.	-4.1%	-12.5%	27.4%	74.6%	26.8%	8.5%	4.5%	4.1%	5.2%	14.6%				
	% CHG YR.	-4.1%	-8.5%	2.1%	15.3%	18.0%	15.8%	13.6%	12.2%	11.3%	11.6%				
<b>STATION: 307 - WASHBURN</b>															
<b>LOCATION: HIGHWAY 83 - NORTH OF WASHBURN</b>															
NORTH	2021	2124	2178	2522	2547	2874	3181	3269	3069	2842	2627				
	2020	2272	2497	2250	1860	2392	2931	3037	2869	2667	2367	2114	2188	2454	
	% CHG MO.	-6.5%	-12.8%	12.1%	36.9%	20.2%	8.5%	7.6%	7.0%	6.6%	11.0%				
	% CHG YR.	-6.5%	-9.8%	-2.8%	5.5%	8.6%	8.6%	8.4%	8.2%	8.0%	8.3%				
SOUTH	2021	2116	2167	2510	2510	2857	3150	3244	3098	2827	2621				
	2020	2263	2470	2191	1851	2390	2930	3016	2893	2710	2386	2120	2187	2451	
	% CHG MO.	-6.5%	-12.3%	14.6%	35.6%	19.5%	7.5%	7.6%	7.1%	4.3%	9.8%				
	% CHG YR.	-6.5%	-9.5%	-1.9%	6.0%	8.9%	8.6%	8.4%	8.2%	7.8%	8.0%				
NORTH & SOUTH	2021	4240	4345	5032	5057	5731	6331	6513	6167	5669	5248				
	2020	4535	4967	4441	3711	4782	5861	6053	5762	5377	4753	4234	4375	4904	
	% CHG MO.	-6.5%	-12.5%	13.3%	36.3%	19.8%	8.0%	7.6%	7.0%	5.4%	10.4%				
	% CHG YR.	-6.5%	-9.7%	-2.3%	5.8%	8.8%	8.6%	8.4%	8.2%	7.9%	8.1%				
<b>STATION: 309 - NEWTOWN_EAST</b>															
<b>LOCATION: HIGHWAY 23 - 8.4 MILES EAST OF NEW TOWN</b>															
EAST	2021	1734	1656	1921	1999	2245	2382	2359	2236	2123	2073				
	2020	2060	2296	1951	1527	1878	2200	2177	2138	2084	1916	1741	1727	1975	
	% CHG MO.	-15.8%	-27.9%	-1.5%	30.9%	19.5%	8.3%	8.4%	4.6%	1.9%	8.2%				
	% CHG YR.	-15.8%	-22.2%	-15.8%	-6.7%	-1.6%	0.2%	1.5%	1.9%	1.9%	2.5%				
WEST	2021	1712	1635	1898	1984	2225	2359	2326	2237	2105	2042				
	2020	2040	2266	1921	1506	1860	2184	2161	2106	2066	1886	1710	1698	1950	
	% CHG MO.	-16.1%	-27.8%	-1.2%	31.7%	19.6%	8.0%	7.6%	6.2%	1.9%	8.3%				
	% CHG YR.	-16.1%	-22.3%	-15.8%	-6.5%	-1.4%	0.3%	1.4%	2.1%	2.0%	2.6%				











**STATE OF NORTH DAKOTA  
AUTOMATIC TRAFFIC RECORDER DATA BY MONTH  
AVERAGE DAILY TRAFFIC AND PERCENT CHANGE BY STATION**

DIRECTION	YEAR	JAN	FEB	MAR	APR	MAY	JUN	JUL	AUG	SEP	OCT	NOV	DEC	ANNUAL
<b>RURAL MINOR ARTERIAL</b>														
<b>STATION: 247 - COURTENAY</b>														
<b>LOCATION: HIGHWAY 20 - 1.8 MILES SOUTH OF ND 9</b>														
NORTH	2021	183	186	220	234	264	276	274	263	252	255			
	2020	174	196	186	163	216	257	252	249	247	232	209	198	215
	% CHG MO.	5.2%	-5.1%	18.3%	43.6%	22.2%	7.4%	8.7%	5.6%	2.0%	9.9%			
	% CHG YR.	5.2%	-0.3%	5.9%	14.5%	16.3%	14.3%	13.4%	12.2%	10.9%	10.8%			
SOUTH	2021	180	185	212	225	261	281	268	258	246	250			
	2020	171	194	177	155	214	249	248	244	257	233	202	191	211
	% CHG MO.	5.3%	-4.6%	19.8%	45.2%	22.0%	12.9%	8.1%	5.7%	-4.3%	7.3%			
	% CHG YR.	5.3%	0.0%	6.5%	15.1%	16.7%	15.9%	14.5%	13.2%	10.8%	10.5%			
NORTH & SOUTH	2021	363	371	432	459	525	557	542	521	498	505			
	2020	345	390	363	318	430	506	500	493	504	465	411	389	426
	% CHG MO.	5.2%	-4.9%	19.0%	44.3%	22.1%	10.1%	8.4%	5.7%	-1.2%	8.6%			
	% CHG YR.	5.2%	-0.1%	6.2%	14.8%	16.5%	15.1%	13.9%	12.7%	10.9%	10.6%			
<b>STATION: 249 - GARRISON</b>														
<b>LOCATION: HIGHWAY 37 - 1.0 MILES WEST OF GARRISON</b>														
EAST	2021	630	634	744	802	981	1139	1211	1052	942	861			
	2020	590	628	586	627	890	1086	1154	1047	935	819	744	686	816
	% CHG MO.	6.8%	1.0%	27.0%	27.9%	10.2%	4.9%	4.9%	0.5%	0.7%	5.1%			
	% CHG YR.	6.8%	3.8%	11.3%	15.6%	14.2%	11.9%	10.4%	8.9%	7.8%	7.6%			
WEST	2021	623	637	740	801	988	1134	1186	1040	934	855			
	2020	585	622	588	622	884	1086	1144	1039	932	808	733	678	810
	% CHG MO.	6.5%	2.4%	25.9%	28.8%	11.8%	4.4%	3.7%	0.1%	0.2%	5.8%			
	% CHG YR.	6.5%	4.4%	11.4%	15.9%	14.8%	12.2%	10.5%	8.8%	7.7%	7.6%			
EAST & WEST	2021	1253	1271	1484	1603	1969	2273	2397	2092	1876	1716			
	2020	1175	1250	1174	1249	1774	2172	2298	2086	1867	1627	1477	1364	1626
	% CHG MO.	6.6%	1.7%	26.4%	28.3%	11.0%	4.7%	4.3%	0.3%	0.5%	5.5%			
	% CHG YR.	6.6%	4.1%	11.4%	15.7%	14.5%	12.0%	10.4%	8.8%	7.8%	7.6%			
<b>STATION: 275 - HANNOVER</b>														
<b>LOCATION: HIGHWAY 31 - 1.2 MILES NORTH OF HANNOVER</b>														
NORTH	2021	273	263	308	340	369	418	396	402	399	361			
	2020	254	277	251	237	316	377	430	401	354	320	305	301	319
	% CHG MO.	7.5%	-5.1%	22.7%	43.5%	16.8%	10.9%	-7.9%	0.2%	12.7%	12.8%			
	% CHG YR.	7.5%	0.9%	7.9%	16.2%	16.3%	15.1%	10.5%	8.9%	9.4%	9.7%			
SOUTH	2021	268	253	300	331	362	416	387	403	404	356			
	2020	255	269	247	234	308	367	429	390	351	317	299	293	313
	% CHG MO.	5.1%	-5.9%	21.5%	41.5%	17.5%	13.4%	-9.8%	3.3%	15.1%	12.3%			
	% CHG YR.	5.1%	-0.6%	6.5%	14.6%	15.3%	14.9%	9.9%	8.8%	9.6%	9.9%			
NORTH & SOUTH	2021	541	516	608	671	731	834	783	805	803	717			
	2020	509	546	498	471	624	744	859	791	705	637	604	594	632
	% CHG MO.	6.3%	-5.5%	22.1%	42.5%	17.1%	12.1%	-8.8%	1.8%	13.9%	12.6%			
	% CHG YR.	6.3%	0.2%	7.2%	15.4%	15.8%	15.0%	10.2%	8.9%	9.5%	9.8%			
<b>STATION: 289 - MANNING</b>														
<b>LOCATION: HIGHWAY 22 - SOUTH OF MANNING</b>														
NORTH	2021	1683	1674	1862	1993	2123	2312	2307	2309	2272	2173			
	2020	2257	2361	2166	1818	1811	1990	2064	2096	2060	1978	1837	1747	2015
	% CHG MO.	-25.4%	-29.1%	-14.0%	9.6%	17.2%	16.2%	11.8%	10.2%	10.3%	9.9%			
	% CHG YR.	-25.4%	-27.3%	-23.1%	-16.2%	-10.4%	-6.1%	-3.5%	-1.8%	-0.5%	0.5%			
SOUTH	2021	1666	1655	1853	1966	2111	2288	2297	2298	2255	2165			
	2020	2233	2350	2151	1799	1787	1950	2035	2071	2026	1971	2250	1743	2031
	% CHG MO.	-25.4%	-29.6%	-13.9%	9.3%	18.1%	17.3%	12.9%	11.0%	11.3%	9.8%			
	% CHG YR.	-25.4%	-27.5%	-23.2%	-16.3%	-10.4%	-6.0%	-3.3%	-1.5%	-0.1%	0.9%			
NORTH & SOUTH	2021	3349	3329	3715	3959	4234	4600	4604	4607	4527	4338			
	2020	4490	4711	4317	3617	3598	3940	4099	4167	4086	3949	4087	3490	4046
	% CHG MO.	-25.4%	-29.3%	-13.9%	9.5%	17.7%	16.8%	12.3%	10.6%	10.8%	9.9%			
	% CHG YR.	-25.4%	-27.4%	-23.1%	-16.2%	-10.4%	-6.0%	-3.4%	-1.6%	-0.3%	0.7%			
<b>STATION: 291 - MARMARTH</b>														
<b>LOCATION: HIGHWAY 12 - 1.0 MILE WEST OF MARMARTH</b>														
EAST	2021	232	217	258	290	313	361	452	460	434	414			
	2020	252	266	269	203	278	352	335	335	320	292	263	247	284
	% CHG MO.	-7.9%	-18.4%	-4.1%	42.9%	12.6%	2.6%	34.9%	37.3%	35.6%	41.8%			
	% CHG YR.	-7.9%	-13.3%	-10.2%	0.7%	3.3%	3.1%	8.6%	12.8%	15.6%	18.2%			

**STATE OF NORTH DAKOTA  
AUTOMATIC TRAFFIC RECORDER DATA BY MONTH  
AVERAGE DAILY TRAFFIC AND PERCENT CHANGE BY STATION**

DIRECTION	YEAR	JAN	FEB	MAR	APR	MAY	JUN	JUL	AUG	SEP	OCT	NOV	DEC	ANNUAL
<b>RURAL MINOR ARTERIAL</b>														
<b>STATION: 291 - MARMARTH</b>														
<b>LOCATION: HIGHWAY 12 - 1.0 MILE WEST OF MARMARTH</b>														
WEST	2021	234	218	258	290	317	368	436	460	429	407			
	2020	252	267	258	198	276	357	346	344	318	290	261	248	285
	% CHG MO.	-7.1%	-18.4%	0.0%	46.5%	14.9%	3.1%	26.0%	33.7%	34.9%	40.3%			
	% CHG YR.	-7.1%	-12.9%	-8.6%	2.6%	5.3%	4.8%	8.5%	12.3%	15.1%	17.6%			
EAST & WEST	2021	466	435	516	580	630	729	888	920	863	821			
	2020	504	533	527	401	554	709	681	679	638	582	524	495	569
	% CHG MO.	-7.5%	-18.4%	-2.1%	44.6%	13.7%	2.8%	30.4%	35.5%	35.3%	41.1%			
	% CHG YR.	-7.5%	-13.1%	-9.4%	1.6%	4.3%	4.0%	8.6%	12.6%	15.3%	17.9%			
<b>STATION: 293 - KILLDEER</b>														
<b>LOCATION: HIGHWAY 22 - 5.9 MILES NORTH OF KILLDEER</b>														
NORTH	2021	1234	1288	1421	1533	1593	1730	1702	1679	1721	1632			
	2020	2131 *	2193 *	2165 *	1611 *	1667 *	1707 *	1289	1412	1397	1414	1367	1260	1634
	% CHG MO.	-42.1%	-41.3%	-34.4%	-4.8%	-4.4%	1.3%	32.0%	18.9%	23.2%	15.4%			
	% CHG YR.	-42.1%	-41.7%	-39.2%	-32.4%	-27.6%	-23.3%	-17.7%	-14.1%	-10.7%	-8.6%			
SOUTH	2021	1216	1275	1414	1515	1571	1713	1690	1678	1713	1635			
	2020	2131	2193	2165	1611	1667	1707	1295	1458	1424	1405	1349	1257	1639
	% CHG MO.	-42.9%	-41.9%	-34.7%	-6.0%	-5.8%	0.4%	30.5%	15.1%	20.3%	16.4%			
	% CHG YR.	-42.9%	-42.4%	-39.8%	-33.1%	-28.4%	-24.1%	-18.6%	-15.1%	-11.9%	-9.6%			
NORTH & SOUTH	2021	2450	2563	2835	3048	3164	3443	3392	3357	3434	3267			
	2020	4262	4386	4330	3222	3334	3414	2584	2870	2821	2819	2716	2517	3273
	% CHG MO.	-42.5%	-41.6%	-34.5%	-5.4%	-5.1%	0.8%	31.3%	17.0%	21.7%	15.9%			
	% CHG YR.	-42.5%	-42.0%	-39.5%	-32.7%	-28.0%	-23.7%	-18.2%	-14.6%	-11.3%	-9.1%			
<b>STATION: 295 - NECHE</b>														
<b>LOCATION: HIGHWAY 18 - 1.2 MILES SOUTH OF NECHE</b>														
NORTH	2021	135 *	133 *	147 *	152 *	164 *	174 *	183 *	189 *	198 *	199 *			
	2020	138	141	129	115	144	141	156 *	163 *	181 *	160 *	145 *	144 *	146
	% CHG MO.	-2.2%	-5.7%	14.0%	32.2%	13.9%	23.4%	17.3%	16.0%	9.4%	24.4%			
	% CHG YR.	-2.2%	-3.9%	1.7%	8.4%	9.6%	12.0%	12.9%	13.3%	12.8%	14.0%			
SOUTH	2021	135 *	133 *	147 *	152 *	164 *	174 *	183 *	189 *	198 *	199 *			
	2020	146	154	144	132	160	157	156 *	163 *	181 *	160 *	145 *	144 *	154
	% CHG MO.	-7.5%	-13.6%	2.1%	15.2%	2.5%	10.8%	17.3%	16.0%	9.4%	24.4%			
	% CHG YR.	-7.5%	-10.7%	-6.5%	-1.6%	-0.7%	1.3%	3.7%	5.4%	5.9%	7.8%			
NORTH & SOUTH	2021	270	266	294	304	328	348	366	378	396	398			
	2020	284	295	273	247	304	298	312	326	362	320	290	288	300
	% CHG MO.	-4.9%	-9.8%	7.7%	23.1%	7.9%	16.8%	17.3%	16.0%	9.4%	24.4%			
	% CHG YR.	-4.9%	-7.4%	-2.6%	3.2%	4.2%	6.4%	8.1%	9.2%	9.2%	10.8%			
<b>STATION: 373 - DICKINSON22S</b>														
<b>LOCATION: HIGHWAY 22 - 11.4 MILES SOUTH OF DICKINSON</b>														
NORTH	2021	696	694	844	850	876	1016	998	983	901	915			
	2020	738	768	686	578	761	886	909	868	807	767	752	726	771
	% CHG MO.	-5.7%	-9.6%	23.0%	47.1%	15.1%	14.7%	9.8%	13.2%	11.6%	19.3%			
	% CHG YR.	-5.7%	-7.7%	1.9%	11.3%	12.1%	12.7%	12.2%	12.3%	12.2%	12.9%			
SOUTH	2021	696 *	694 *	844 *	850 *	876 *	1016 *	998 *	983 *	901 *	915 *			
	2020	729	762	682	570	756	882	916	869	795	763	752	732	767
	% CHG MO.	-4.5%	-8.9%	23.8%	49.1%	15.9%	15.2%	9.0%	13.1%	13.3%	19.9%			
	% CHG YR.	-4.5%	-6.8%	2.8%	12.4%	13.2%	13.6%	12.8%	12.8%	12.9%	13.6%			
NORTH & SOUTH	2021	1392	1388	1688	1700	1752	2032	1996	1966	1802	1830			
	2020	1467	1530	1368	1148	1517	1768	1825	1737	1602	1530	1504	1458	1538
	% CHG MO.	-5.1%	-9.3%	23.4%	48.1%	15.5%	14.9%	9.4%	13.2%	12.5%	19.6%			
	% CHG YR.	-5.1%	-7.2%	2.4%	11.9%	12.7%	13.1%	12.5%	12.6%	12.6%	13.3%			
<b>STATION: 453 - OAKES S1</b>														
<b>LOCATION: HIGHWAY 1 - 3.0 MILES SOUTH OF OAKES</b>														
NORTH	2021	535	498	565	603	666	695	688	658	691	772			
	2020	462	491	477	462	591	650	621	626	612	692	595	518	566
	% CHG MO.	15.8%	1.4%	18.4%	30.5%	12.7%	6.9%	10.8%	5.1%	12.9%	11.6%			
	% CHG YR.	15.8%	8.4%	11.7%	16.3%	15.5%	13.7%	13.2%	12.1%	12.2%	12.1%			
SOUTH	2021	533	499	554	597	667	689	686	653	687	770			
	2020	461	494	482	467	590	651	622	627	624	704	601	522	570
	% CHG MO.	15.6%	1.0%	14.9%	27.8%	13.1%	5.8%	10.3%	4.1%	10.1%	9.4%			
	% CHG YR.	15.6%	8.1%	10.4%	14.7%	14.3%	12.5%	12.2%	11.0%	10.9%	10.7%			









**STATE OF NORTH DAKOTA  
AUTOMATIC TRAFFIC RECORDER DATA BY MONTH  
AVERAGE DAILY TRAFFIC AND PERCENT CHANGE BY STATION**

DIRECTION	YEAR	JAN	FEB	MAR	APR	MAY	JUN	JUL	AUG	SEP	OCT	NOV	DEC	ANNUAL
-----------	------	-----	-----	-----	-----	-----	-----	-----	-----	-----	-----	-----	-----	--------

**URBAN MINOR ARTERIAL**

**STATION: 607 - DICKINSON (U)**

**LOCATION: 9TH ST. EAST BET. 2ND AVE. & 3RD AVE. EAST**

EAST	2021	1359	1376	1454	1496	1581	1581	1528	1616	1672	1609			
	2020	1415	1457	1189	983	1233	1429	1401	1381	1461	1421	1276	1285	1328
	% CHG MO.	-4.0%	-5.6%	22.3%	52.2%	28.2%	10.6%	9.1%	17.0%	14.4%	13.2%			
	% CHG YR.	-4.0%	-4.8%	3.2%	12.7%	15.8%	14.8%	13.9%	14.3%	14.3%	14.2%			
WEST	2021	1386	1410	1517	1593	1709	1745	1673	1766	1809	1770			
	2020	1431	1476	1229	1003	1316	1496	1466	1466	1548	1491	1327	1325	1381
	% CHG MO.	-3.1%	-4.5%	23.4%	58.8%	29.9%	16.6%	14.1%	20.5%	16.9%	18.7%			
	% CHG YR.	-3.1%	-3.8%	4.3%	14.9%	18.0%	17.7%	17.2%	17.6%	17.5%	17.6%			
EAST & WEST	2021	2745	2786	2971	3089	3290	3326	3201	3382	3481	3379			
	2020	2846	2933	2418	1986	2549	2925	2867	2847	3009	2912	2603	2610	2709
	% CHG MO.	-3.5%	-5.0%	22.9%	55.5%	29.1%	13.7%	11.6%	18.8%	15.7%	16.0%			
	% CHG YR.	-3.5%	-4.3%	3.7%	13.8%	16.9%	16.3%	15.6%	16.0%	16.0%	16.0%			

**STATION: 611 - MINOT (U)**

**LOCATION: UNIVERSITY AVE. BET 12TH ST. & 13TH ST. NW.**

EAST	2021	901	925	1008	1041	1060	998	919	1018	1157	1129			
	2020	1036	1138	927	699	887	938	1046	1010	1080	1139	871	839	968
	% CHG MO.	-13.0%	-18.7%	8.7%	48.9%	19.5%	6.4%	-12.1%	0.8%	7.1%	-0.9%			
	% CHG YR.	-13.0%	-16.0%	-8.6%	2.0%	5.3%	5.5%	2.7%	2.5%	3.0%	2.6%			
WEST	2021	964	984	1070	1101	1140	1138	1008	1115	1249	1157			
	2020	1108	1204	1009	789	1007	1089	1252	1154	1187	1307	936	907	1079
	% CHG MO.	-13.0%	-18.3%	6.0%	39.5%	13.2%	4.5%	-19.5%	-3.4%	5.2%	-11.5%			
	% CHG YR.	-13.0%	-15.7%	-9.1%	0.2%	2.8%	3.1%	-0.7%	-1.1%	-0.3%	-1.6%			
EAST & WEST	2021	1865	1909	2078	2142	2200	2136	1927	2133	2406	2286			
	2020	2144	2342	1936	1488	1894	2027	2298	2164	2267	2446	1807	1746	2047
	% CHG MO.	-13.0%	-18.5%	7.3%	44.0%	16.2%	5.4%	-16.1%	-1.4%	6.1%	-6.5%			
	% CHG YR.	-13.0%	-15.9%	-8.9%	1.1%	4.0%	4.2%	0.9%	0.6%	1.3%	0.4%			

**URBAN COLLECTOR & LOCAL URBAN**

**STATION: 609 - MINOT (U)**

**LOCATION: 16TH AVE BET. 12TH ST SW. & 17TH AVE. SW.**

EAST	2021	1110	1100	1212	1287	1380	1390	1389	1377	1389 *	1330			
	2020	1154	1224	1047	895	1253	1345	1307	1325	1281	1256 *	1084	1183	1196
	% CHG MO.	-3.8%	-10.1%	15.8%	43.8%	10.1%	3.3%	6.3%	3.9%	8.4%	5.9%			
	% CHG YR.	-3.8%	-7.1%	-0.1%	9.0%	9.3%	8.1%	7.8%	7.3%	7.4%	7.3%			
WEST	2021	1067	1072	1215	1271	1362	1360	1372	1297	1309 *	1289			
	2020	1094	1159	970	830	1288	1290	1285	1266	1238	1193 *	1064	1164	1153
	% CHG MO.	-2.5%	-7.5%	25.3%	53.1%	5.7%	5.4%	6.8%	2.4%	5.7%	8.0%			
	% CHG YR.	-2.5%	-5.1%	4.1%	14.1%	12.1%	10.8%	10.1%	9.1%	8.7%	8.6%			
EAST & WEST	2021	2177	2172	2427	2558	2742	2750	2761	2674	2698	2619			
	2020	2248	2383	2017	1725	2541	2635	2592	2591	2519	2449	2148	2347	2350
	% CHG MO.	-3.2%	-8.9%	20.3%	48.3%	7.9%	4.4%	6.5%	3.2%	7.1%	6.9%			
	% CHG YR.	-3.2%	-6.1%	1.9%	11.5%	10.6%	9.4%	9.0%	8.2%	8.0%	7.9%			

**CON** STATION DOWN DUE TO CONSTRUCTION  
**REP** STATION DOWN DUE TO REPAIRS  
**NEW** NEW STATION, NO PRIOR DATA  
**\*** TRAFFIC ESTIMATED DUE TO INSUFFICIENT DATA



PART 2

# TRUCK TRAFFIC

**NORTH DAKOTA DEPARTMENT OF TRANSPORTATION  
ATR CLASS LOCATIONS**

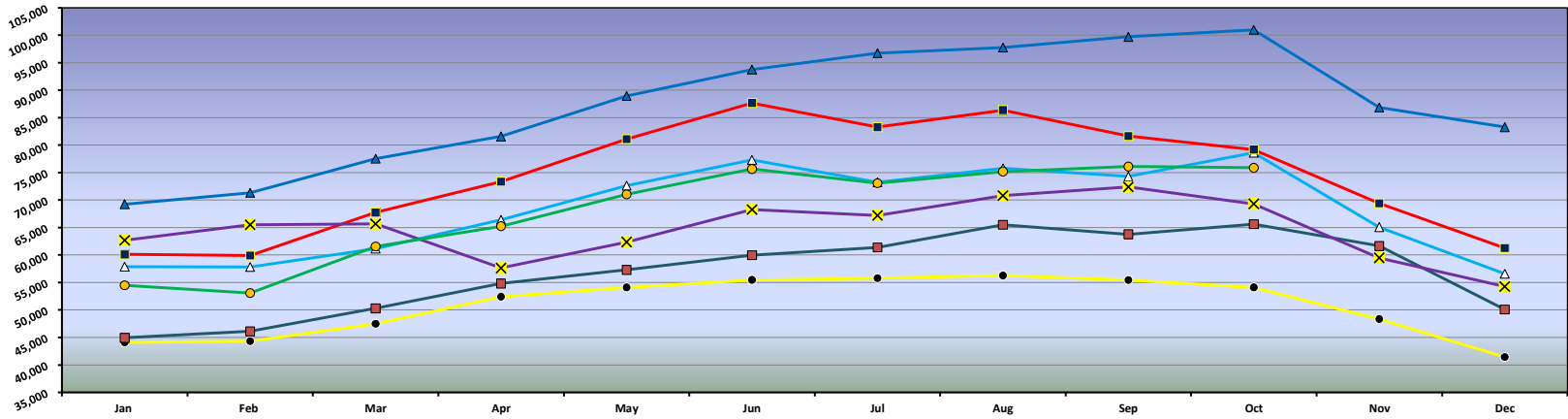
STATION	NAME	HIGHWAY	REF POINT	OFF SET	TYPE	LOCATION
<b>URBAN INTERSTATE 94</b>						
217	FARGO (U)	94	352.000	0.3327	Class	RED RIVER BRIDGE
283	BISMARCK (U)	94	158.000	0.8538	Class	0.4 MILES WEST OF US 83 INT.
<b>RURAL INTERSTATE 94</b>						
207	MEDINA	94	231.000	0.2923	Class	0.9 MILES EAST OF MEDINA
223	NEW SALEM	94	126.000	0.8803	Class	0.8 MILES WEST OF ND 31 INT.
245	TOWER CITY	94	312.000	0.5100	Class	2.3 MILES WEST OF BUFFALO INT.
279	PAINTED CANYON	94	34.000	0.6637	Class	7.8 MILES WEST OF US 85 INT.
<b>URBAN INTERSTATE 29</b>						
235	FARGO (U)	29	66.255	0.5725	Class	NORTH OF 12TH AVE.
<b>RURAL INTERSTATE 29</b>						
211	BUXTON	29	112.000	0.8614	Class	4.0 MILES NORTH OF MAYVILLE INT.
243	BOWESMONT	29	196.014	0.5726	Class	0.5 MILES NORTH OF BOWESMONT
265	MOORETON	29	25.000	0.0149	Class	2.5 MILES NORTH OF ND 13
285	DAVENPORT	29	55.000	0.4798	Class	1.3 MILES NORTH OF DAVENPORT INT
<b>RURAL PRINCIPAL ARTERIAL</b>						
201	RAY	2	51.000	0.2986	Class	2.1 MILES WEST OF RAY
203	MAX	83	168.000	0.9400	Class	3.3 MILES SOUTH OF ND 53
205	GWINNER	13	337.000	0.2241	Class	2.1 MILES WEST OF ND 32
215	JAMESTOWN	52	259.000	0.5408	Class	2.5 MILES NORTH OF JAMESTOWN
219	MANDAN	6	55.000	0.8718	Class	11.0 MILES SOUTH OF MANDAN
221	FAIRFIELD	85	80.000	0.8850	Class	5.1 MILES NORTH OF I-94
229	COOPERSTOWN	200	345.000	0.2602	Class	4.0 MILES EAST OF COOPERSTOWN
233	FOXHOLM	52	78.000	0.2600	Class	1.5 MILES SOUTHEAST OF FOXHOLM
237	NEKOMA	1	205.000	0.2195	Class	8.5 MILES SOUTH LANGDON
239	NEW TOWN	23	42.000	0.8986	Class	4.7 MILES EAST OF ND 22
241	BOTTINEAU	5	173.000	0.9523	Class	0.2 MILES WEST OF ND 14
251	HAGUE	83	1.000	0.1144	Class	1.1 MILES NORTH OF SOUTH DAKOTA LINE
253	RUGBY	2	207.000	0.3265	Class	3.5 MILES WEST OF ND 3
255	CROSBY	5	28.000	0.7521	Class	6.0 MILES WEST OF CROSBY
257	WILLISTON	2	2.000	0.3979	Class	2.4 MILES EAST OF MONTANA LINE
261	CARRINGTON	281	117.000	0.9013	Class	5.5 MILES NORTH OF JUNCTION WITH HWY 200
271	GOLDEN VALLEY	200	131.000	0.0000	Class	0.7 MILES EAST OF GOLDEN VALLEY
273	NEW LEIPZIG	21	67.000	0.5500	Class	2.1 MILES WEST OF ND 49
281	SAWYER	52	102.000	0.7136	Class	WEST OF SAWYER
297	WILLISTON_NW	85	193.000	0.7000	Class	NW WILLISTON TRUCK RELIEVER ROUTE
299	KILLDEER200W	200	88.000	0.5200	Class	6.7 MILES WEST OF JCT. ND 22 AND ND 200
303	MICHIGAN	2	296.000	0.6500	Class	4.0 MILES EAST OF ND 1
307	WASHBURN	83	130.000	0.7300	Class	NORTH OF WASHBURN
309	NEWTOWN_EAST	23	58.000	0.7000	Class	8.4 MILES EAST OF NEW TOWN
311	WILLISTON_2N	2	27.000	0.6300	Class	5.2 MILES NORTH OF WILLISTON
315	RYDER_E23__	23	102.000	0.2000	Class	3.3 MILES WEST OF THE JUNCTION WITH US 83
337	BLAISDELL_E2	2	107.000	0.1000	Class	1.0 MILES EAST OF BLAISDELL
339	GRASSY_BUTTE	85	113.000	0.8500	Class	1.3 MILES NORTH OF GRASSY BUTTE
341	ALEXANDER85W	85	162.000	0.2080	Class	1/2 MILE W OF ALEXANDER
343	WATFORD_E23_	23	10.000	0.7000	Class	9.1 MILES EAST OF WATFORD CITY
345	WILLIAMS_N85	85	205.000	0.4800	Class	15.4 MILES NORTH OF WILLISTON
349	BEULAH_S49__	49	91.000	0.7700	Class	10.5 MILES SOUTH OF BEULAH
351	COLUMBUS_W5	5	52.000	0.2000	Class	3.2 MILES EAST OF NOONAN
353	GRANVILLE_E2	2	177.000	0.7600	Class	8.3 MILES EAST OF GRANVILLE
355	MOHALL_W5__	5	121.000	0.9700	Class	3.6 MILES WEST OF MOHALL
419	EMERADO_W2	2	340.000	0.5000	Class	2.5 MILES WEST OF EMERADO
423	HARVEY_N3__	3	165.000	0.5600	Class	5.6 MILES NORTH OF HARVEY
429	LAKOTA_S1__	1	160.000	0.3800	Class	1.6 MILES SOUTH OF LAKOTA
447	DUNSEITH_E__	281	250.000	0.2700	Class	2.95 MILES EAST OF DUNSEITH

**NORTH DAKOTA DEPARTMENT OF TRANSPORTATION  
ATR CLASS LOCATIONS**

<b>STATION</b>	<b>NAME</b>	<b>HIGHWAY</b>	<b>REF POINT</b>	<b>OFF SET</b>	<b>TYPE</b>	<b>LOCATION</b>
<b>RURAL PRINCIPAL ARTERIAL</b>						
449	SHEYENNE_N__	281	141.000	0.4800	Class	2.5 MILES NORTH OF SHEYENNE
<b>RURAL MINOR ARTERIAL</b>						
231	GRAFTON	17	122.000	0.1293	Class	5.5 MILES WEST OF GRAFTON
247	COURTENAY	20	20.000	0.4196	Class	1.8 MILES SOUTH OF ND 9
249	GARRISON	37	54.000	0.9548	Class	1.0 MILES WEST OF GARRISON
275	HANNOVER	31	97.000	0.0758	Class	1.2 MILES NORTH OF HANNOVER
289	MANNING	22	81.000	0.5055	Class	SOUTH OF MANNING
291	MARMARTH	12	4.000	0.8670	Class	1.0 MILE WEST OF MARMARTH
293	KILLDEER	22	112.000	0.1350	Class	5.9 MILES NORTH OF KILLDEER
295	NECHE	18	239.000	0.3300	Class	1.2 MILES SOUTH OF NECHE
373	DICKINSON22S	22	57.000	0.2400	Class	11.4 MILES SOUTH OF DICKINSON
453	OAKES_S1____	1	13.000	0.3500	Class	3.0 MILES SOUTH OF OAKES
461	THOMPSON_W15	15	129.000	0.0000	Class	3.4 MILES WEST OF THOMPSON
727	ENDERLIN_E46	46	84.000	0.2000	Class	EAST EDGE OF ENDERLIN
759	WILTON_E36__	36	2.000	0.2600	Class	2.3 MILES SE OF WILTON
<b>RURAL MAJOR COLLECTOR-STATE</b>						
267	TRENTON	1804	329.000	0.8846	Class	1.5 MILES NORTHEAST OF TRENTON
493	ST_THOMAS_W_	66	117.000	0.4000	Class	5.7 MILES WEST OF ST. THOMAS
783	KULM_S56____	56	14.000	0.5800	Class	4.7 MILES SOUTH OF KULM
<b>RURAL MAJOR COLLECTOR-COUNTY</b>						
101	MINOT55ST_NE	5145 C	0.000	0.3000	Class	CMC 5145 - 0.3 MILES NORTH OF US2
103	MINOT46AV_NE	5138 C	8.000	0.2000	Class	CMC 5138 - 2.1 MILES EAST OF US 83
225	STERLING	836 C	14.000	0.2100	Class	CMC 0836 - 1.9 MILES WEST OF US 83
<b>URBAN PRINCIPAL ARTERIAL</b>						
287	GRAND FORKS	81 B	942.000	0.4092	Class	S. WASHINGTON BETWEEN 24 AND 28 AVE. S.
503	BISMARCK (U)	810	5.000	0.5750	Class	BIS. EXPWY. SOUTH OF E. MAIN STREET
513	WFARGO_MAIN_ (U)	10 B	933.000	0.4400	Class	MAIN ST. WEST OF 15TH ST NW

Average Daily Truck Traffic  
All ATR's

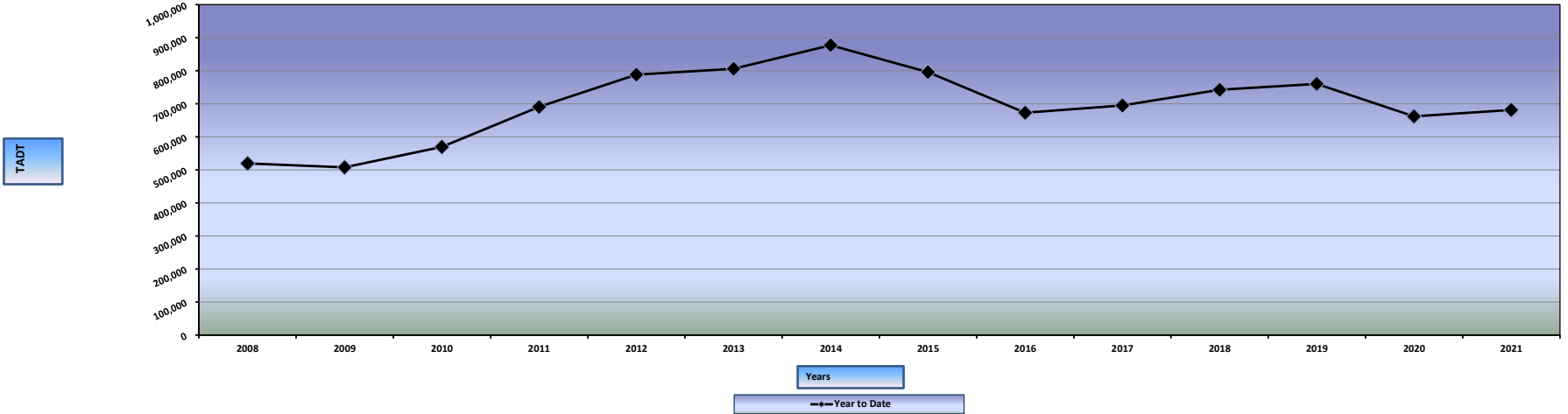
TADT



Years



Average Daily Truck Traffic All ATR's Year to Date (January-October)



**STATE OF NORTH DAKOTA  
AUTOMATIC TRAFFIC RECORDER DATA BY MONTH  
AVERAGE TRUCK DAILY TRAFFIC AND PERCENT CHANGE BY SYSTEM**

YEAR	JAN	FEB	MAR	APR	MAY	JUN	JUL	AUG	SEP	OCT	NOV	DEC	ANNUAL
<b>URBAN INTERSTATE</b>													
2021	10606	10566	12242	13069	14138	15095	14427	14687	14198	14275			13330
2020	9819	10288	10643	10418	12146	13357	13004	13563	13717	13457	11620	10526	11880
% CHG	8.0%	2.7%	15.0%	25.4%	16.4%	13.0%	10.9%	8.3%	3.5%	6.1%			
<b>RURAL INTERSTATE</b>													
2021	15054	15041	17094	17011	17727	18972	18420	19088	19094	18682			17618
2020	13957	14719	15343	13641	14875	16531	16295	17437	18121	17236	15722	14291	15681
% CHG	7.9%	2.2%	11.4%	24.7%	19.2%	14.8%	13.0%	9.5%	5.4%	8.4%			
<b>RURAL PRINCIPAL ARTERIAL</b>													
2021	21468	20463	24005	25935	28833	30347	29294	30274	31288	30568			27248
2020	30377	31849	31229	25366	25982	27914	27977	29184	29697	27737	23490	21738	27712
% CHG	-29.3%	-35.7%	-23.1%	2.2%	11.0%	8.7%	4.7%	3.7%	5.4%	10.2%			
<b>RURAL MINOR ARTERIAL</b>													
2021	3544	3343	4016	4410	4944	5339	5150	5211	5650	5988			4760
2020	4290	4487	4386	4001	4046	4653	4410	4665	4838	5137	4116	3658	4391
% CHG	-17.4%	-25.5%	-8.4%	10.2%	22.2%	14.7%	16.8%	11.7%	16.8%	16.6%			
<b>RURAL MAJOR COLLECTOR - STATE</b>													
2021	763	674	747	825	870	1027	1088	1082	1118	1632			983
2020	1222	1204	1093	914	956	981	932	1167	1220	1308	865	789	1054
% CHG	-37.6%	-44.0%	-31.7%	-9.7%	-9.0%	4.7%	16.7%	-7.3%	-8.4%	24.8%			
<b>RURAL MAJOR COLLECTOR - COUNTY</b>													
2021	573	522	631	706	874	877	865	942	889	874			775
2020	468	486	517	577	896	970	806	928	910	809	639	586	716
% CHG	22.4%	7.4%	22.1%	22.4%	-2.5%	-9.6%	7.3%	1.5%	-2.3%	8.0%			
<b>URBAN PRINCIPAL ARTERIAL</b>													
2021	2484	2463	2816	3290	3646	3995	3832	3882	3863	3843			3411
2020	2539	2470	2457	2716	3458	3846	3789	3860	3882	3624	3039	2676	3196
% CHG	-2.2%	-0.3%	14.6%	21.1%	5.4%	3.9%	1.1%	0.6%	-0.5%	6.0%			









**STATE OF NORTH DAKOTA  
AUTOMATIC TRAFFIC RECORDER DATA BY MONTH  
TRUCK AVERAGE DAILY TRAFFIC AND PERCENT CHANGE BY STATION**

DIRECTION	YEAR	JAN	FEB	MAR	APR	MAY	JUN	JUL	AUG	SEP	OCT	NOV	DEC	ANNUAL
<b>RURAL PRINCIPAL ARTERIAL</b>														
<b>STATION: 205 - GWINNER</b>														
<b>LOCATION: HIGHWAY 13 - 2.1 MILES WEST OF ND 32</b>														
EAST	2021	72	66	75	86	96	89	66	78	91	129			
	2020	64	74	80	80	84	88	73	76	86	127	74	64	81
	% CHG MO.	12.5%	-10.8%	-6.3%	7.5%	14.3%	1.1%	-9.6%	2.6%	5.8%	1.6%			
	% CHG YR.	12.5%	0.0%	-2.3%	0.3%	3.4%	3.0%	1.3%	1.5%	2.0%	1.9%			
WEST	2021	73	62	77	87	98	87	64	79	95	134			
	2020	65	75	84	86	83	92	77	78	89	130	75	61	83
	% CHG MO.	12.3%	-17.3%	-8.3%	1.2%	18.1%	-5.4%	-16.9%	1.3%	6.7%	3.1%			
	% CHG YR.	12.3%	-3.6%	-5.4%	-3.5%	1.0%	-0.2%	-2.5%	-2.0%	-1.0%	-0.3%			
EAST & WEST	2021	145	128	152	173	194	176	130	157	186	263			
	2020	129	149	164	166	167	180	150	154	175	257	149	125	164
	% CHG MO.	12.4%	-14.1%	-7.3%	4.2%	16.2%	-2.2%	-13.3%	1.9%	6.3%	2.3%			
	% CHG YR.	12.4%	-1.8%	-3.8%	-1.6%	2.2%	1.4%	-0.6%	-0.3%	0.5%	0.8%			
<b>STATION: 215 - JAMESTOWN</b>														
<b>LOCATION: HIGHWAY 52 - 2.5 MILES NORTH OF JAMESTOWN</b>														
EAST	2021	408	401	507	527	547	555	535	529	564	561			
	2020	392	404	455	432	492	554	491	507	574	522	427	382	469
	% CHG MO.	4.1%	-0.7%	11.4%	22.0%	11.2%	0.2%	9.0%	4.3%	-1.7%	7.5%			
	% CHG YR.	4.1%	1.6%	5.2%	9.5%	9.9%	7.9%	8.1%	7.6%	6.3%	6.4%			
WEST	2021	408	380	503	516	531	540	517	523	562	558			
	2020	392 *	404 *	455 *	432 *	492 *	554 *	491 *	507 *	579	518	429	366	468
	% CHG MO.	4.1%	-5.9%	10.5%	19.4%	7.9%	-2.5%	5.3%	3.2%	-2.9%	7.7%			
	% CHG YR.	4.1%	-1.0%	3.2%	7.4%	7.5%	5.5%	5.4%	5.1%	4.0%	4.4%			
EAST & WEST	2021	816	781	1010	1043	1078	1095	1052	1052	1126	1119			
	2020	784	808	910	864	984	1108	982	1014	1153	1040	856	748	938
	% CHG MO.	4.1%	-3.3%	11.0%	20.7%	9.6%	-1.2%	7.1%	3.7%	-2.3%	7.6%			
	% CHG YR.	4.1%	0.3%	4.2%	8.4%	8.7%	6.7%	6.8%	6.3%	5.2%	5.4%			
<b>STATION: 219 - MANDAN</b>														
<b>LOCATION: HIGHWAY 6 - 11.0 MILES SOUTH OF MANDAN</b>														
NORTH	2021	103	96	112	115	136	158	147	152	156	145			
	2020	87	104	98	106	137	142	137	141	151	141	118	103	122
	% CHG MO.	18.4%	-7.7%	14.3%	8.5%	-0.7%	11.3%	7.3%	7.8%	3.3%	2.8%			
	% CHG YR.	18.4%	4.2%	7.6%	7.8%	5.6%	6.8%	6.9%	7.0%	6.5%	6.1%			
SOUTH	2021	98	91	106	108	130	152	131	144	151	139			
	2020	81	97	92	101	128	135	132	139	146	138	116	100	117
	% CHG MO.	21.0%	-6.2%	15.2%	6.9%	1.6%	12.6%	-0.8%	3.6%	3.4%	0.7%			
	% CHG YR.	21.0%	6.2%	9.3%	8.6%	6.8%	8.0%	6.5%	6.1%	5.7%	5.1%			
NORTH & SOUTH	2021	201	187	218	223	266	310	278	296	307	284			
	2020	168	201	190	207	265	277	269	280	297	279	234	203	239
	% CHG MO.	19.6%	-7.0%	14.7%	7.7%	0.4%	11.9%	3.3%	5.7%	3.4%	1.8%			
	% CHG YR.	19.6%	5.1%	8.4%	8.2%	6.2%	7.4%	6.7%	6.6%	6.1%	5.6%			
<b>STATION: 221 - FAIRFIELD</b>														
<b>LOCATION: HIGHWAY 85 - 5.1 MILES NORTH OF I-94</b>														
NORTH	2021	317	295	350	351	387	383	389	388	406	396			
	2020	471	523	539	383	335	403	383	398	376	389	357	334	408
	% CHG MO.	-32.7%	-43.6%	-35.1%	-8.4%	15.5%	-5.0%	1.6%	-2.5%	8.0%	1.8%			
	% CHG YR.	-32.7%	-38.4%	-37.2%	-31.5%	-24.5%	-21.5%	-18.6%	-16.7%	-14.3%	-12.8%			
SOUTH	2021	309	274	327	340	377	411	407	417	427	418			
	2020	438	502	534	371	341	382	363	388	386	378	354	319	396
	% CHG MO.	-29.5%	-45.4%	-38.8%	-8.4%	10.6%	7.6%	12.1%	7.5%	10.6%	10.6%			
	% CHG YR.	-29.5%	-38.0%	-38.3%	-32.2%	-25.6%	-20.6%	-16.6%	-13.8%	-11.2%	-9.2%			
NORTH & SOUTH	2021	626	569	677	691	764	794	796	805	833	814			
	2020	909	1025	1073	754	676	785	746	786	762	767	711	653	804
	% CHG MO.	-31.1%	-44.5%	-36.9%	-8.4%	13.0%	1.1%	6.7%	2.4%	9.3%	6.1%			
	% CHG YR.	-31.1%	-38.2%	-37.7%	-31.9%	-25.0%	-21.1%	-17.6%	-15.3%	-12.8%	-11.0%			
<b>STATION: 229 - COOPERSTOWN</b>														
<b>LOCATION: HIGHWAY 200 - 4.0 MILES EAST OF COOPERSTOWN</b>														
EAST	2021	72	65	82	87	89	101	86	103	144	136			
	2020	70	78	78	79	81	97	90	100	135	102	74	74	88
	% CHG MO.	2.9%	-16.7%	5.1%	10.1%	9.9%	4.1%	-4.4%	3.0%	6.7%	33.3%			
	% CHG YR.	2.9%	-7.4%	-3.1%	0.3%	2.3%	2.7%	1.6%	1.8%	2.6%	6.0%			







**STATE OF NORTH DAKOTA  
AUTOMATIC TRAFFIC RECORDER DATA BY MONTH  
TRUCK AVERAGE DAILY TRAFFIC AND PERCENT CHANGE BY STATION**

DIRECTION	YEAR	JAN	FEB	MAR	APR	MAY	JUN	JUL	AUG	SEP	OCT	NOV	DEC	ANNUAL
<b>RURAL PRINCIPAL ARTERIAL</b>														
<b>STATION: 297 - WILLISTON_NW</b>														
<b>LOCATION: HIGHWAY 85 - NW WILLISTON TRUCK RELIEVER ROUTE</b>														
SOUTH	2021	692	698	742	760	812	913	936	946	934	957			
	2020	1361	1301	1246	982	939	957	926	965	995	904	795	710	1007
	% CHG MO.	-49.2%	-46.3%	-40.4%	-22.6%	-13.5%	-4.6%	1.1%	-2.0%	-6.1%	5.9%			
	% CHG YR.	-49.2%	-47.8%	-45.4%	-40.9%	-36.5%	-32.0%	-28.0%	-25.1%	-23.1%	-20.7%			
NORTH & SOUTH	2021	1347	1352	1443	1473	1582	1792	1809	1854	1813	1867			
	2020	2653	2565	2436	1915	1828	1862	1791	1891	1936	1762	1548	1384	1964
	% CHG MO.	-49.2%	-47.3%	-40.8%	-23.1%	-13.5%	-3.8%	1.0%	-2.0%	-6.4%	6.0%			
	% CHG YR.	-49.2%	-48.3%	-45.9%	-41.3%	-36.9%	-32.2%	-28.3%	-25.3%	-23.4%	-20.9%			
<b>STATION: 299 - KILLDEER200W</b>														
<b>LOCATION: HIGHWAY 200 - 6.7 MILES WEST OF JCT. ND 22 AND ND 200</b>														
EAST	2021	243	248	284	299	373	356	405	388	416	410			
	2020	402	469	438	317	261	271	295	286	296	307	260	249	321
	% CHG MO.	-39.6%	-47.1%	-35.2%	-5.7%	42.9%	31.4%	37.3%	35.7%	40.5%	33.6%			
	% CHG YR.	-39.6%	-43.6%	-40.8%	-33.9%	-23.3%	-16.5%	-10.0%	-5.2%	-0.8%	2.4%			
WEST	2021	267	272	304	322	393	384	428	411	436	440			
	2020	436	497	475	354	290	296	324	312	339	340	289	270	352
	% CHG MO.	-38.8%	-45.3%	-36.0%	-9.0%	35.5%	29.7%	32.1%	31.7%	28.6%	29.4%			
	% CHG YR.	-38.8%	-42.2%	-40.1%	-33.9%	-24.1%	-17.3%	-11.3%	-6.8%	-3.2%	-0.2%			
EAST & WEST	2021	510	520	588	621	766	740	833	799	852	850			
	2020	838	966	913	671	551	567	619	598	635	647	549	519	673
	% CHG MO.	-39.1%	-46.2%	-35.6%	-7.5%	39.0%	30.5%	34.6%	33.6%	34.2%	31.4%			
	% CHG YR.	-39.1%	-42.9%	-40.4%	-33.9%	-23.7%	-16.9%	-10.7%	-6.0%	-2.0%	1.1%			
<b>STATION: 303 - MICHIGAN</b>														
<b>LOCATION: HIGHWAY 2 - 4.0 MILES EAST OF ND 1</b>														
EAST	2021	290	264	306	314	374	389	357	373	397	361			
	2020	283	277	271	257	311	387	359	373	409	330	288	280	319
	% CHG MO.	2.5%	-4.7%	12.9%	22.2%	20.3%	0.5%	-0.6%	0.0%	-2.9%	9.4%			
	% CHG YR.	2.5%	-1.1%	3.5%	7.9%	10.7%	8.5%	6.9%	5.9%	4.7%	5.2%			
WEST	2021	312	282	324	328	391	416	390	391	402	370			
	2020	301	298	289	266	329	417	378	404	438	352	304	299	340
	% CHG MO.	3.7%	-5.4%	12.1%	23.3%	18.8%	-0.2%	3.2%	-3.2%	-8.2%	5.1%			
	% CHG YR.	3.7%	-0.8%	3.4%	8.0%	10.4%	8.1%	7.2%	5.7%	3.7%	3.9%			
EAST & WEST	2021	602	546	630	642	765	805	747	764	799	731			
	2020	584	575	560	523	640	804	737	777	847	682	592	579	658
	% CHG MO.	3.1%	-5.0%	12.5%	22.8%	19.5%	0.1%	1.4%	-1.7%	-5.7%	7.2%			
	% CHG YR.	3.1%	-0.9%	3.4%	7.9%	10.5%	8.2%	7.1%	5.8%	4.2%	4.5%			
<b>STATION: 307 - WASHBURN</b>														
<b>LOCATION: HIGHWAY 83 - NORTH OF WASHBURN</b>														
NORTH	2021	339	329	378	382	428	480	463	463	435	420			
	2020	370	387	384	354	418	499	507	499	465	444	374	347	421
	% CHG MO.	-8.4%	-15.0%	-1.6%	7.9%	2.4%	-3.8%	-8.7%	-7.2%	-6.5%	-5.4%			
	% CHG YR.	-8.4%	-11.8%	-8.3%	-4.5%	-3.0%	-3.2%	-4.1%	-4.6%	-4.8%	-4.9%			
SOUTH	2021	361	352	405	412	471	538	518	515	480	450			
	2020	404	411	410	387	461	565	551	564	548	498	407	375	465
	% CHG MO.	-10.6%	-14.4%	-1.2%	6.5%	2.2%	-4.8%	-6.0%	-8.7%	-12.4%	-9.6%			
	% CHG YR.	-10.6%	-12.5%	-8.7%	-5.1%	-3.5%	-3.8%	-4.1%	-4.8%	-5.8%	-6.2%			
NORTH & SOUTH	2021	700	681	783	794	899	1018	981	978	915	870			
	2020	774	798	794	741	879	1064	1058	1063	1013	942	781	722	886
	% CHG MO.	-9.6%	-14.7%	-1.4%	7.2%	2.3%	-4.3%	-7.3%	-8.0%	-9.7%	-7.6%			
	% CHG YR.	-9.6%	-12.2%	-8.5%	-4.8%	-3.2%	-3.5%	-4.1%	-4.7%	-5.3%	-5.6%			
<b>STATION: 309 - NEWTOWN_EAST</b>														
<b>LOCATION: HIGHWAY 23 - 8.4 MILES EAST OF NEW TOWN</b>														
EAST	2021	313	200	369	423	473	495	456	467	457	373			
	2020	315	387	427	363	357	402	389	424	429	432	386	318	386
	% CHG MO.	-0.6%	-48.3%	-13.6%	16.5%	32.5%	23.1%	17.2%	10.1%	6.5%	-13.7%			
	% CHG YR.	-0.6%	-26.9%	-21.9%	-12.5%	-3.8%	1.0%	3.4%	4.3%	4.6%	2.6%			
WEST	2021	337	245	348	398	446	460	430	434	432	384			
	2020	370	415	418	341	339	384	367	399	405	391	354	316	375
	% CHG MO.	-8.9%	-41.0%	-16.7%	16.7%	31.6%	19.8%	17.2%	8.8%	6.7%	-1.8%			
	% CHG YR.	-8.9%	-25.9%	-22.7%	-14.0%	-5.8%	-1.5%	1.1%	2.1%	2.7%	2.2%			



















**STATE OF NORTH DAKOTA  
AUTOMATIC TRAFFIC RECORDER DATA BY MONTH  
TRUCK AVERAGE DAILY TRAFFIC AND PERCENT CHANGE BY STATION**

DIRECTION	YEAR	JAN	FEB	MAR	APR	MAY	JUN	JUL	AUG	SEP	OCT	NOV	DEC	ANNUAL
-----------	------	-----	-----	-----	-----	-----	-----	-----	-----	-----	-----	-----	-----	--------

**RURAL MAJOR COLLECTOR - COUNTY**

**STATION: 225 - STERLING**

**LOCATION: HIGHWAY 836C - CMC 0836 - 1.9 MILES WEST OF US 83**

WEST	2021	56	56	72	87	98	104	96	104	106	93			
	2020	55	48 *	57 *	58 *	83 *	101 *	89 *	93	97	85	69	69	75
	% CHG MO.	1.8%	16.7%	26.3%	50.0%	18.1%	3.0%	7.9%	11.8%	9.3%	9.4%			
	% CHG YR.	1.8%	8.7%	15.0%	24.3%	22.6%	17.7%	15.9%	15.2%	14.4%	13.8%			
EAST & WEST	2021	112	109	153	189	220	215	195	210	225	191			
	2020	104	96	114	116	166	202	178	192	207	182	144	136	153
	% CHG MO.	7.7%	13.5%	34.2%	62.9%	32.5%	6.4%	9.6%	9.4%	8.7%	4.9%			
	% CHG YR.	7.7%	10.5%	19.1%	30.9%	31.4%	25.1%	22.2%	20.1%	18.4%	16.8%			

**URBAN PRINCIPAL ARTERIAL**

**STATION: 287 - GRAND FORKS**

**LOCATION: HIGHWAY 81B - S. WASHINGTON BETWEEN 24 AND 28 AVE. S.**

NORTH	2021	165	156	162	192	248	266	273	259	270	345			
	2020	197	167	144	144	210	256	241	262	288	290	179	168	212
	% CHG MO.	-16.2%	-6.6%	12.5%	33.3%	18.1%	3.9%	13.3%	-1.1%	-6.3%	19.0%			
	% CHG YR.	-16.2%	-11.8%	-4.9%	3.5%	7.1%	6.4%	7.6%	6.2%	4.3%	6.2%			
SOUTH	2021	181	181	191	211	266	286	289	275	278	351			
	2020	205	177	155	158	210	259	260	269	299	298	193	186	222
	% CHG MO.	-11.7%	2.3%	23.2%	33.5%	26.7%	10.4%	11.2%	2.2%	-7.0%	17.8%			
	% CHG YR.	-11.7%	-5.2%	3.0%	9.9%	13.8%	13.1%	12.7%	11.0%	8.3%	9.6%			
NORTH & SOUTH	2021	346	337	353	403	514	552	562	534	548	696			
	2020	402	344	299	302	420	515	501	531	587	588	372	354	435
	% CHG MO.	-13.9%	-2.0%	18.1%	33.4%	22.4%	7.2%	12.2%	0.6%	-6.6%	18.4%			
	% CHG YR.	-13.9%	-8.4%	-0.9%	6.8%	10.5%	9.8%	10.2%	8.7%	6.4%	7.9%			

**STATION: 503 - BISMARCK (U)**

**LOCATION: HIGHWAY 810 - BIS. EXPWY. SOUTH OF E. MAIN STREET**

EAST	2021	629	616	745	882	965	1064	1017	1073	1064	1061			
	2020	612	624	639	754	1019	1108	1066	1050	984	940	856	711	864
	% CHG MO.	2.8%	-1.3%	16.6%	17.0%	-5.3%	-4.0%	-4.6%	2.2%	8.1%	12.9%			
	% CHG YR.	2.8%	0.7%	6.1%	9.2%	5.2%	3.0%	1.6%	1.7%	2.5%	3.6%			
WEST	2021	581	564	685	826	917	1024	984	1013	1010	1015			
	2020	566	567	590	703	947	1040	1017	1002	926	884	818	672	811
	% CHG MO.	2.7%	-0.5%	16.1%	17.5%	-3.2%	-1.5%	-3.2%	1.1%	9.1%	14.8%			
	% CHG YR.	2.7%	1.1%	6.2%	9.5%	5.9%	4.2%	2.8%	2.5%	3.3%	4.6%			
EAST & WEST	2021	1210	1180	1430	1708	1882	2088	2001	2086	2074	2076			
	2020	1178	1191	1229	1457	1966	2148	2083	2052	1910	1824	1674	1383	1675
	% CHG MO.	2.7%	-0.9%	16.4%	17.2%	-4.3%	-2.8%	-3.9%	1.7%	8.6%	13.8%			
	% CHG YR.	2.7%	0.9%	6.2%	9.4%	5.5%	3.6%	2.2%	2.1%	2.9%	4.1%			

**STATION: 513 - WFARGO\_MAIN\_ (U)**

**LOCATION: HIGHWAY 10B - MAIN ST. WEST OF 15TH ST NW**

EAST	2021	475	484	527	601	643	702	665	645	645	555			
	2020	485	475	477	508	560	619	635	676	723	622	513	481	565
	% CHG MO.	-2.1%	1.9%	10.5%	18.3%	14.8%	13.4%	4.7%	-4.6%	-10.8%	-10.8%			
	% CHG YR.	-2.1%	-0.1%	3.4%	7.3%	9.0%	9.9%	9.0%	6.9%	4.4%	2.8%			
WEST	2021	453	462	506	578	607	653	604	617	596	516			
	2020	474	460	452	449	512	564	570	601	662	590	480	458	523
	% CHG MO.	-4.4%	0.4%	11.9%	28.7%	18.6%	15.8%	6.0%	2.7%	-10.0%	-12.5%			
	% CHG YR.	-4.4%	-2.0%	2.5%	8.9%	11.0%	12.0%	11.0%	9.8%	7.0%	4.8%			

STATE OF NORTH DAKOTA  
 AUTOMATIC TRAFFIC RECORDER DATA BY MONTH  
 TRUCK AVERAGE DAILY TRAFFIC AND PERCENT CHANGE BY STATION

DIRECTION	YEAR	JAN	FEB	MAR	APR	MAY	JUN	JUL	AUG	SEP	OCT	NOV	DEC	ANNUAL
URBAN PRINCIPAL ARTERIAL														
<b>STATION: 513 - WFARGO_MAIN_ (U)</b>														
<b>LOCATION: HIGHWAY 10B - MAIN ST. WEST OF 15TH ST NW</b>														
EAST &	2021	928	946	1033	1179	1250	1355	1269	1262	1241	1071			
WEST	2020	959	935	929	957	1072	1183	1205	1277	1385	1212	993	939	1087
	% CHG MO.	-3.2%	1.2%	11.2%	23.2%	16.6%	14.5%	5.3%	-1.2%	-10.4%	-11.6%			
	% CHG YR.	-3.2%	-1.1%	3.0%	8.1%	10.0%	10.9%	9.9%	8.3%	5.7%	3.8%			

- CON** STATION DOWN DUE TO CONSTRUCTION
- REP** STATION DOWN DUE TO REPAIRS
- NEW** NEW STATION, NO PRIOR DATA
- \*** TRAFFIC ESTIMATED DUE TO INSUFFICIENT DATA