



AUTOMATIC TRAFFIC DATA

May 2022



Prepared by
NORTH DAKOTA DEPARTMENT OF TRANSPORTATION
BISMARCK, NORTH DAKOTA
www.dot.nd.gov

DIRECTOR
William T. Panos

PLANNING AND ASSET MANAGEMENT DIVISION
Scott D. Zainhofsky, P. E., Director

Principal Author
Nikkie Reis, Traffic Data Section

CONTENTS

The Fast Lane

Part 1 - ALL TRAFFIC

1. ATR Locations
2. ATR Locations Map
3. WIM Locations Map
4. Average Daily Traffic Graph
5. Average Daily Traffic Year to Date Graph
6. ADT and Percent Change by Functional Class
7. ADT and Percent Change by Station

Part 2 -TRUCK TRAFFIC

1. ATR Locations
2. Average Daily Traffic Graph – Trucks
3. Average Daily Traffic Year to Date Graph – Trucks
4. ADT and Percent Change by Functional Class
5. ADT and Percent Change by Station

More detailed information is available and can be obtained by contacting Nickie Reis, Traffic Data Section of the Planning and Asset Management Division of the North Dakota Department of Transportation, 608 East Boulevard Ave, Bismarck, ND 58505, (701)328-3458 or nreis@nd.gov

The Fast Lane

(When you just don't have time for the whole report)

May 2022

In the following observations, when I talk about increases and decreases, I am referring to how the numbers compared to the same month one year before. For example: May 2022 versus May 2021. We are now breaking this report down into two parts: Part 1 gives overall information about all the vehicles passing the recording devices and Part 2 deals only with truck traffic.

Part 1 – ALL TRAFFIC

Graph

When we total all the traffic at all the ATRs, we see a graphic depiction of how this year's traffic compares to last year's. For this month, the traffic is 0.5 % lower than it was last May.

Functional Class Groups

When we break the state's highways down into the various classes of highways, we see some interesting facts. Let's look at the following functional classes:

- **Urban Interstate 94** – decreased 0.3 %
- **Rural Interstate 94** – decreased 2.5 %
- **Urban Interstate 29 (this group is comprised of only one station)** – increased 2.3 %
- **Rural Interstate 29** – increased 0.8 %
- **Rural Principal Arterial** – decreased 0.0 %
- **Rural Minor Arterial** – decreased 0.3 %
- **Rural Major Collector – State** – increased 11.2 %
- **Rural Major Collector – County** – decreased 7.6 %
- **Urban Principal Arterial** – decreased 1.7 %
- **Urban Minor Arterial** – decreased 1.4 %
- **Urban Collector & Local Urban (this group is comprised of only one station)** - decreased 10.0 %

Individual Stations

Compared to last May, 31 of the 81 stations showed an increase. Of the remaining 50 stations, 50 decreased and 0 had no change.

Part 2 – TRUCK TRAFFIC

Graph

When we total just the truck traffic at all the ATRs, we see a graphic depiction of how this year's traffic compares to last year's. For this month, truck traffic is 0.6 % lower than it was last May.

Functional Class Groups

- **Urban Interstate** – decreased 6.7 %
- **Rural Interstate** – decreased 3.4 %
- **Rural Principal Arterial** – increased 3.7 %
- **Rural Minor Arterial** – increased 0.0 %
- **Rural Major Collector – State** – increased 37.4 %
- **Rural Major Collector – County** – decreased 15.7 %
- **Urban Principal Arterial** – decreased 3.1 %

Individual Stations

Of the 73 stations that could be used to compare trucks, 27 increased from May 2021. Of the remaining 46 stations, 45 decreased and 1 did not change. The western 1/3 saw 50% of its stations decrease compared to 80% in the eastern 1/3 & 63% in the central 1/3.

PART 1

ALL TRAFFIC

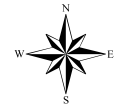
**NORTH DAKOTA DEPARTMENT OF TRANSPORTATION
ATR LOCATIONS**

STATION	NAME	HIGHWAY	REF POINT	OFF SET	TYPE	LOCATION
URBAN INTERSTATE 94						
217	FARGO (U)	94	352.000	0.3327	Class	RED RIVER BRIDGE
283	BISMARCK (U)	94	158.000	0.8538	Class	0.4 MILES WEST OF US 83 INT.
RURAL INTERSTATE 94						
207	MEDINA	94	231.000	0.2923	Class	0.9 MILES EAST OF MEDINA
223	NEW SALEM	94	126.000	0.8803	Class	0.8 MILES WEST OF ND 31 INT.
245	TOWER CITY	94	312.000	0.5100	Class	2.3 MILES WEST OF BUFFALO INT.
279	PAINTED CANYON	94	34.000	0.6637	Class	7.8 MILES WEST OF US 85 INT.
URBAN INTERSTATE 29						
235	FARGO (U)	29	66.255	0.5725	Class	NORTH OF 12TH AVE.
RURAL INTERSTATE 29						
211	BUXTON	29	112.000	0.8614	Class	4.0 MILES NORTH OF MAYVILLE INT.
243	BOWESMONT	29	196.014	0.5726	Class	0.5 MILES NORTH OF BOWESMONT
265	MOORETON	29	25.000	0.0149	Class	2.5 MILES NORTH OF ND 13
285	DAVENPORT	29	55.000	0.4798	Class	1.3 MILES NORTH OF DAVENPORT INT
RURAL PRINCIPAL ARTERIAL						
201	RAY	2	51.000	0.2986	Class	2.1 MILES WEST OF RAY
203	MAX	83	168.000	0.9400	Class	3.3 MILES SOUTH OF ND 53
205	GWINNER	13	337.000	0.2241	Class	2.1 MILES WEST OF ND 32
215	JAMESTOWN	52	259.000	0.5408	Class	2.5 MILES NORTH OF JAMESTOWN
219	MANDAN	6	55.000	0.8718	Class	11.0 MILES SOUTH OF MANDAN
221	FAIRFIELD	85	80.000	0.8850	Class	5.1 MILES NORTH OF I-94
229	COOPERSTOWN	200	345.000	0.2602	Class	4.0 MILES EAST OF COOPERSTOWN
233	FOXHOLM	52	78.000	0.2600	Class	1.5 MILES SOUTHEAST OF FOXHOLM
237	NEKOMA	1	205.000	0.2195	Class	8.5 MILES SOUTH LANGDON
239	NEW TOWN	23	42.000	0.8986	Class	4.7 MILES EAST OF ND 22
241	BOTTINEAU	5	173.000	0.9523	Class	0.2 MILES WEST OF ND 14
251	HAGUE	83	1.000	0.1144	Class	1.1 MILES NORTH OF SOUTH DAKOTA LINE
253	RUGBY	2	207.000	0.3265	Class	3.5 MILES WEST OF ND 3
255	CROSBY	5	28.000	0.7521	Class	6.0 MILES WEST OF CROSBY
257	WILLISTON	2	2.000	0.3979	Class	2.4 MILES EAST OF MONTANA LINE
261	CARRINGTON	281	117.000	0.9013	Class	5.5 MILES NORTH OF JUNCTION WITH HWY 200
271	GOLDEN VALLEY	200	131.000	0.0000	Class	0.7 MILES EAST OF GOLDEN VALLEY
273	NEW LEIPZIG	21	67.000	0.5500	Class	2.1 MILES WEST OF ND 49
281	SAWYER	52	102.000	0.7136	Class	WEST OF SAWYER
297	WILLISTON_NW	85	193.000	0.7000	Class	NW WILLISTON TRUCK RELIEVER ROUTE
299	KILLDEER200W	200	88.000	0.5200	Class	6.7 MILES WEST OF JCT. ND 22 AND ND 200
303	MICHIGAN	2	296.000	0.6500	Class	4.0 MILES EAST OF ND 1
307	WASHBURN	83	130.000	0.7300	Class	NORTH OF WASHBURN
309	NEWTOWN_EAST	23	58.000	0.7000	Class	8.4 MILES EAST OF NEW TOWN
311	WILLISTON_2N	2	27.000	0.6300	Class	5.2 MILES NORTH OF WILLISTON
315	RYDER_E23___	23	102.000	0.2000	Class	3.3 MILES WEST OF THE JUNCTION WITH US 83
337	BLAISDELL_E2	2	107.000	0.1000	Class	1.0 MILES EAST OF BLAISDELL
339	GRASSY_BUTTE	85	113.000	0.8500	Class	1.3 MILES NORTH OF GRASSY BUTTE
341	ALEXANDER85W	85	162.000	0.2080	Class	1/2 MILE W OF ALEXANDER
343	WATFORD_E23_	23	10.000	0.7000	Class	9.1 MILES EAST OF WATFORD CITY
345	WILLIAMS_N85	85	205.000	0.4800	Class	15.4 MILES NORTH OF WILLISTON
349	BEULAH_S49__	49	91.000	0.7700	Class	10.5 MILES SOUTH OF BEULAH
351	COLUMBUS_W5	5	52.000	0.2000	Class	3.2 MILES EAST OF NOONAN
353	GRANVILLE_E2	2	177.000	0.7600	Class	8.3 MILES EAST OF GRANVILLE
355	MOHALL_W5___	5	121.000	0.9700	Class	3.6 MILES WEST OF MOHALL
419	EMERADO_W2	2	340.000	0.5000	Class	2.5 MILES WEST OF EMERADO
423	HARVEY_N3___	3	165.000	0.5600	Class	5.6 MILES NORTH OF HARVEY
429	LAKOTA_S1___	1	160.000	0.3800	Class	1.6 MILES SOUTH OF LAKOTA
447	DUNSEITH_E__	281	250.000	0.2700	Class	2.95 MILES EAST OF DUNSEITH

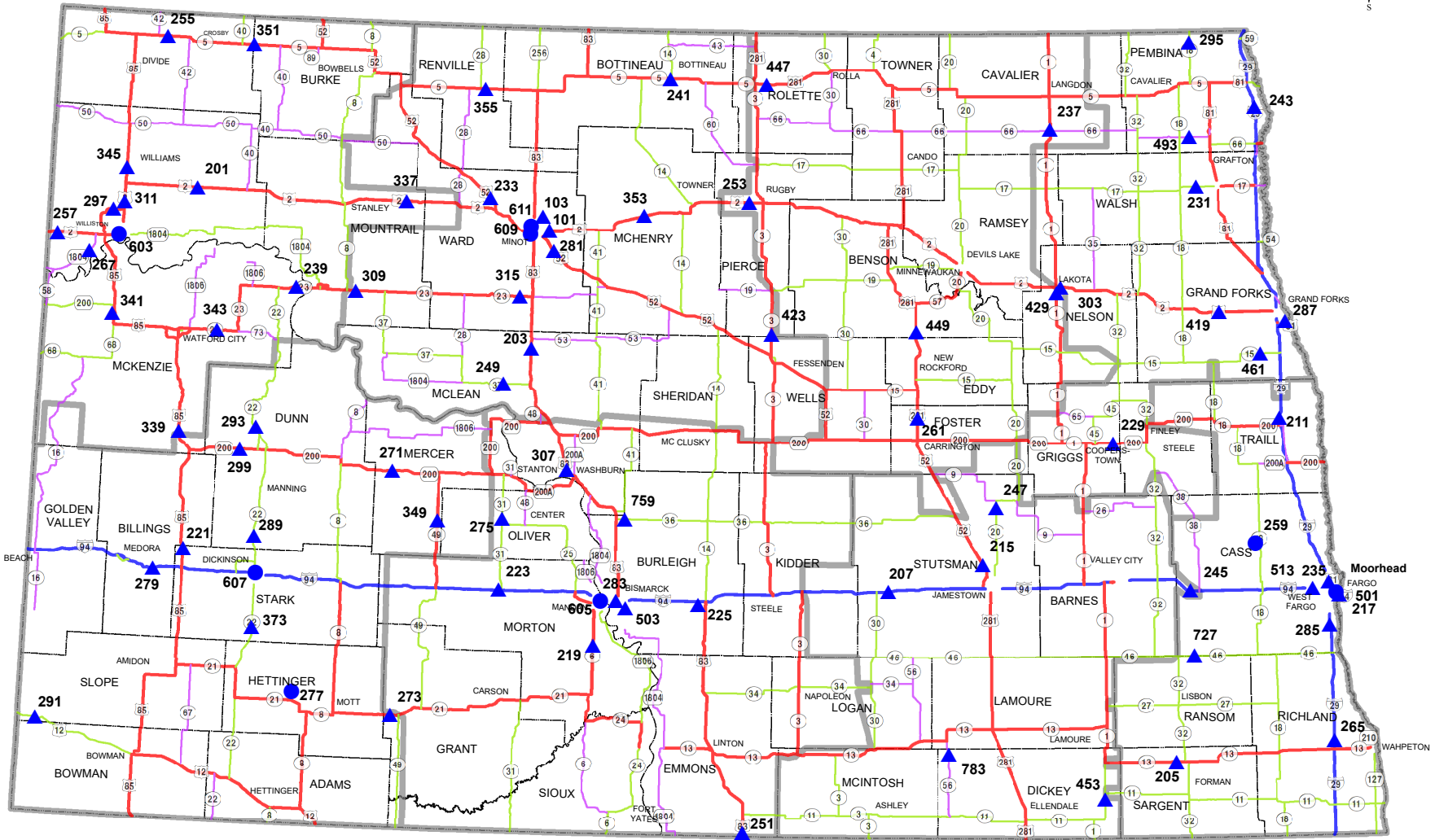
**NORTH DAKOTA DEPARTMENT OF TRANSPORTATION
ATR LOCATIONS**

STATION	NAME	HIGHWAY	REF POINT	OFF SET	TYPE	LOCATION
RURAL PRINCIPAL ARTERIAL						
449	SHEYENNE_N__	281	141.000	0.4800	Class	2.5 MILES NORTH OF SHEYENNE
RURAL MINOR ARTERIAL						
231	GRAFTON	17	122.000	0.1293	Class	5.5 MILES WEST OF GRAFTON
247	COURTENAY	20	20.000	0.4196	Class	1.8 MILES SOUTH OF ND 9
249	GARRISON	37	54.000	0.9548	Class	1.0 MILES WEST OF GARRISON
275	HANNOVER	31	97.000	0.0758	Class	1.2 MILES NORTH OF HANNOVER
289	MANNING	22	81.000	0.5055	Class	SOUTH OF MANNING
291	MARMARTH	12	4.000	0.8670	Class	1.0 MILE WEST OF MARMARTH
293	KILLDEER	22	112.000	0.1350	Class	5.9 MILES NORTH OF KILLDEER
295	NECHE	18	239.000	0.3300	Class	1.2 MILES SOUTH OF NECHE
373	DICKINSON22S	22	57.000	0.2400	Class	11.4 MILES SOUTH OF DICKINSON
453	OAKES_S1_____	1	13.000	0.3500	Class	3.0 MILES SOUTH OF OAKES
461	THOMPSON_W15	15	129.000	0.0000	Class	3.4 MILES WEST OF THOMPSON
727	ENDERLIN_E46	46	84.000	0.2000	Class	EAST EDGE OF ENDERLIN
759	WILTON_E36__	36	2.000	0.2600	Class	2.3 MILES SE OF WILTON
RURAL MAJOR COLLECTOR-STATE						
267	TRENTON	1804	329.000	0.8846	Class	1.5 MILES NORTHEAST OF TRENTON
493	ST_THOMAS_W_	66	117.000	0.4000	Class	5.7 MILES WEST OF ST. THOMAS
783	KULM_S56_____	56	14.000	0.5800	Class	4.7 MILES SOUTH OF KULM
RURAL MAJOR COLLECTOR-COUNTY						
101	MINOT55ST_NE	5145 C	0.000	0.3000	Class	CMC 5145 - 0.3 MILES NORTH OF US2
103	MINOT46AV_NE	5138 C	8.000	0.2000	Class	CMC 5138 - 2.1 MILES EAST OF US 83
225	STERLING	836 C	14.000	0.2100	Class	CMC 0836 - 1.9 MILES WEST OF US 83
259	AYR				Volume	CMC 0918 - 12.0 MILES EAST OF AYR
277	REGENT				Volume	CMC 2117 - 2.0 MILES NORTH OF ND 21
URBAN PRINCIPAL ARTERIAL						
287	GRAND FORKS	81 B	942.000	0.4092	Class	S. WASHINGTON BETWEEN 24 AND 28 AVE. S.
501	FARGO (U)	81 B	925.000	0.3888	Volume	UNIVERSITY AVE. BET 15 AND 15 1/2 AVE.
503	BISMARCK (U)	810	5.000	0.5750	Class	BIS. EXPWY. SOUTH OF E. MAIN STREET
513	WFARGO_MAIN_ (U)	10 B	933.000	0.4400	Class	MAIN ST. WEST OF 15TH ST NW
603	WILLISTON (U)	2 B	900.000	0.6627	Volume	2ND ST. WEST OF 14TH AVE. WEST
605	MANDAN (U)	94 B	917.043	0.0939	Volume	EAST MAIN ST. WEST OF TWIN CITY DRIVE
URBAN MINOR ARTERIAL						
607	DICKINSON (U)				Volume	9TH ST. EAST BET. 2ND AVE. & 3RD AVE. EAST
611	MINOT (U)				Volume	UNIVERSITY AVE. BET 12TH ST. & 13TH ST. NW.
URBAN COLLECTOR AND LOCAL URBAN						
609	MINOT (U)				Volume	16TH AVE BET. 12TH ST SW. & 17TH AVE. SW.

Automatic Traffic Recorder (ATR) Locations



(12)

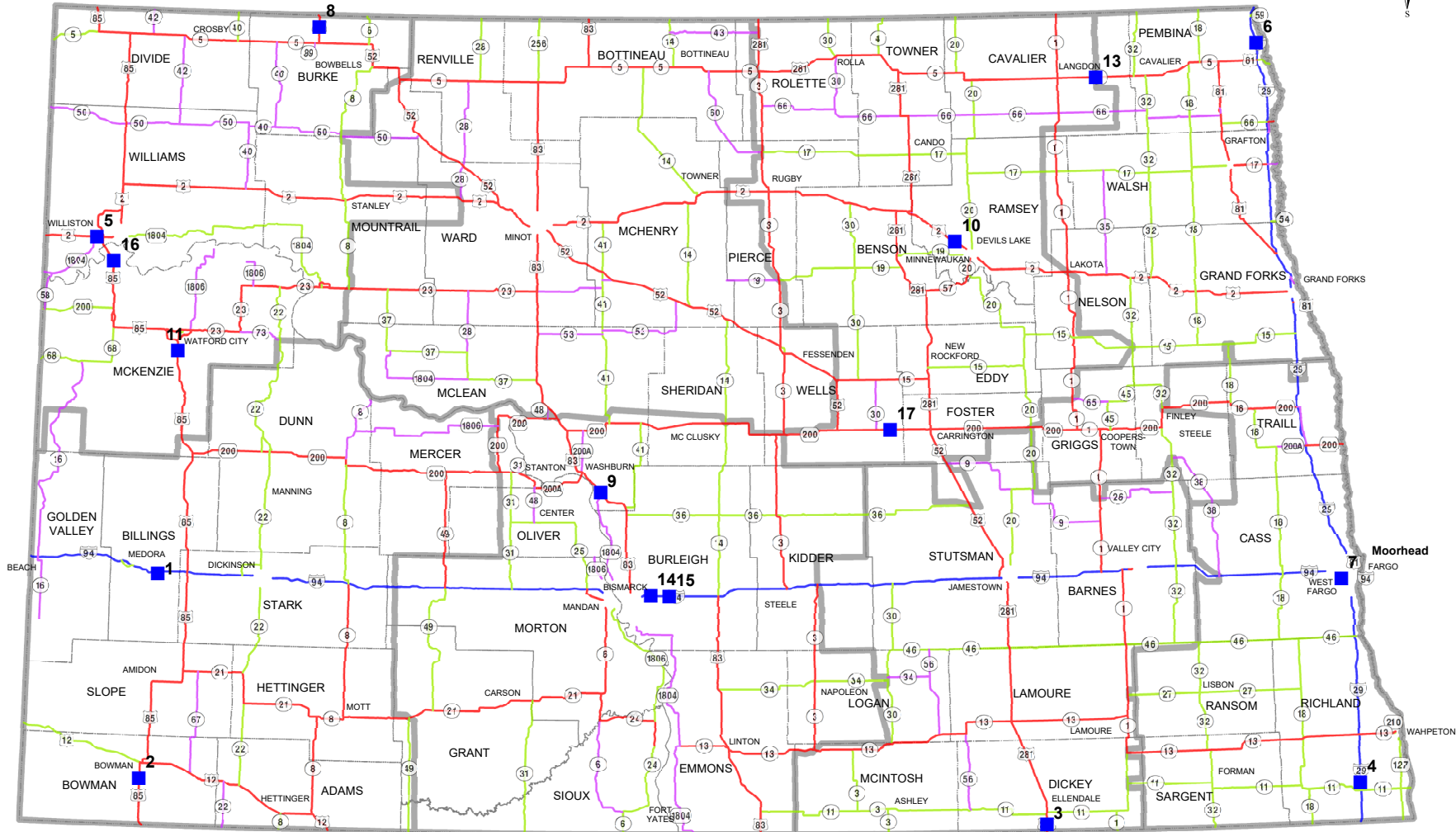
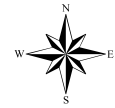


Station Type	Functional Class	Number of ATR Stations
▲ Class	Blue Interstate Rural	8 Rural Interstate
● Volume	Red Principal Arterial Rural	40 Rural Principal Arterial
	Green Minor Arterial Rural	13 Rural Minor Arterial
	Purple Major Collector	8 Rural Major Collector
		3 Urban Interstate
		6 Urban Principal Arterial
		2 Urban Minor Arterial
		1 Urban Collector

Planning & Asset Management Division
 Traffic Data Section
 March 2021

File pathway: F:\PLANNING\NREIS\shjerflo\Reports\Annual 2021\ArcMap\ATR Locations_2021.mxd

Weigh - In - Motion Locations



(13)

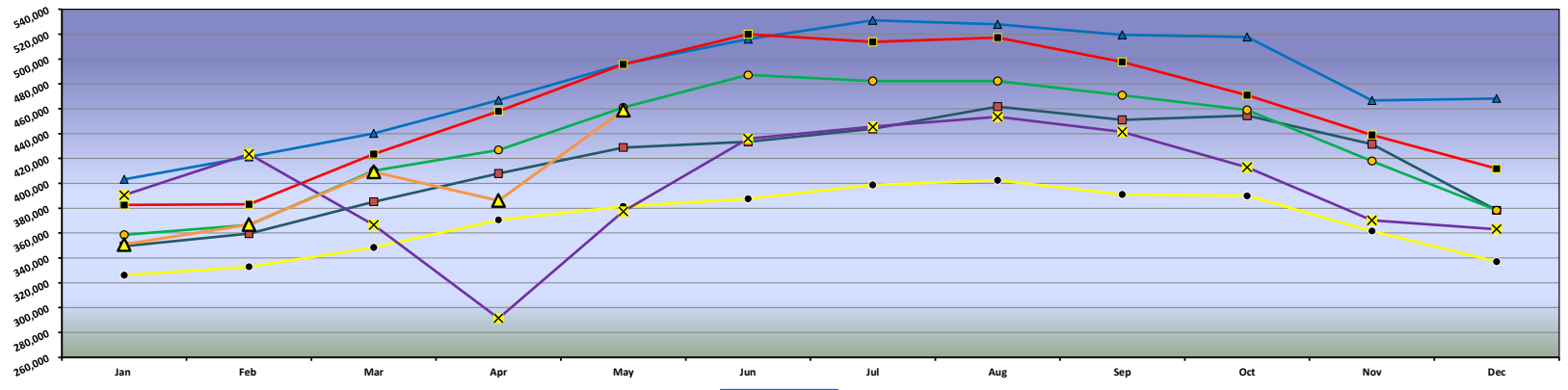
- | | | |
|---------------|--|-----------------------|
| 1 - Belfield | ■ WIM Sites | 14 - Apple Creek East |
| 2 - Bowman | 6 - Joliette | 15 - Apple Creek West |
| 3 - Ellendale | 7 - West Fargo (N/A) | 16 - Panger |
| 4 - Wahpeton | 8 - Portal | 17 - Sykeston |
| 5 - Williston | 9 - Washburn | N/A = NOT ACTIVE |
| | 10 - Devils Lake | |
| | 11 - Watford City (Pending) | |
| | 12 - Buchanan (N/A) | |
| | 13 - Langdon | |

Planning & Asset Management Division
 Traffic Data Section
 March 2021

File pathway: F:\PLANNING\NREIS\shjeflo\Reports\Annual 2021\ArcMap\WIM Locations 2021.mxd

Average Daily Traffic
All ATR's

ADT

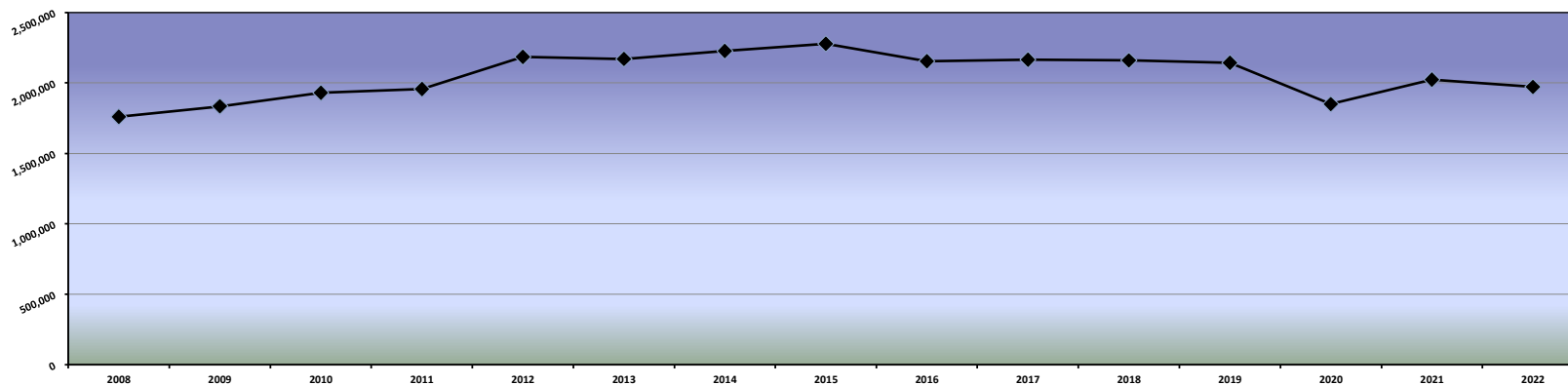


Years

- 2008
- 2010
- 2014
- 2019
- 2020
- 2021
- 2022

Average Daily Traffic All ATR's Year to Date (January-May)

ADT



Years

Year to Date

STATE OF NORTH DAKOTA
AUTOMATIC TRAFFIC RECORDER DATA BY MONTH
AVERAGE DAILY TRAFFIC AND PERCENT CHANGE BY STATION

DIRECTION	YEAR	JAN	FEB	MAR	APR	MAY	JUN	JUL	AUG	SEP	OCT	NOV	DEC	ANNUAL
-----------	------	-----	-----	-----	-----	-----	-----	-----	-----	-----	-----	-----	-----	--------

URBAN MINOR ARTERIAL

STATION: 607 - DICKINSON (U)

LOCATION: 9TH ST. EAST BET. 2ND AVE. & 3RD AVE. EAST

EAST	2022	1358	1398	1485 *	1333	1550								
	2021	1359	1376	1454	1496	1581	1581	1528	1616	1672	1609	1454	1347	1506
	% CHG MO.	-0.1%	1.6%	2.1%	-10.9%	-2.0%								
	% CHG YR.	-0.1%	0.8%	1.2%	-2.0%	-2.0%								
WEST	2022	1408	1480	1555 *	1394	1615								
	2021	1386	1410	1517	1593	1709	1745	1673	1766	1809	1770	1534	1406	1610
	% CHG MO.	1.6%	5.0%	2.5%	-12.5%	-5.5%								
	% CHG YR.	1.6%	3.3%	3.0%	-1.2%	-2.1%								
EAST & WEST	2022	2766	2878	3040	2727	3165								
	2021	2745	2786	2971	3089	3290	3326	3201	3382	3481	3379	2988	2753	3116
	% CHG MO.	0.8%	3.3%	2.3%	-11.7%	-3.8%								
	% CHG YR.	0.8%	2.0%	2.1%	-1.6%	-2.0%								

STATION: 611 - MINOT (U)

LOCATION: UNIVERSITY AVE. BET 12TH ST. & 13TH ST. NW.

EAST	2022	892	982	1002	963	1098								
	2021	901	925	1008	1041	1060	998	919	1018	1157	1129	1006	902	1005
	% CHG MO.	-1.0%	6.2%	-0.6%	-7.5%	3.6%								
	% CHG YR.	-1.0%	2.6%	1.5%	-0.9%	0.0%								
WEST	2022	923	1015	1044	992	1149								
	2021	964	984	1070	1101	1140	1138	1008	1115	1249	1157	1036	935	1075
	% CHG MO.	-4.3%	3.2%	-2.4%	-9.9%	0.8%								
	% CHG YR.	-4.3%	-0.5%	-1.2%	-3.5%	-2.6%								
EAST & WEST	2022	1815	1997	2046	1955	2247								
	2021	1865	1909	2078	2142	2200	2136	1927	2133	2406	2286	2042	1837	2080
	% CHG MO.	-2.7%	4.6%	-1.5%	-8.7%	2.1%								
	% CHG YR.	-2.7%	1.0%	0.1%	-2.3%	-1.3%								

URBAN COLLECTOR & LOCAL URBAN

STATION: 609 - MINOT (U)

LOCATION: 16TH AVE BET. 12TH ST SW. & 17TH AVE. SW.

EAST	2022	1054	1102	1139	1103	1268								
	2021	1110	1100	1212	1287	1380	1390	1389	1377	1389 *	1330	1213	1192	1281
	% CHG MO.	-5.0%	0.2%	-6.0%	-14.3%	-8.1%								
	% CHG YR.	-5.0%	-2.4%	-3.7%	-6.6%	-6.9%								
WEST	2022	1008	1048	1082	1037	1200								
	2021	1067	1072	1215	1271	1362	1360	1372	1297	1309 *	1289	1157	1146	1243
	% CHG MO.	-5.5%	-2.2%	-10.9%	-18.4%	-11.9%								
	% CHG YR.	-5.5%	-3.9%	-6.4%	-9.7%	-10.2%								
EAST & WEST	2022	2062	2150	2221	2140	2468								
	2021	2177	2172	2427	2558	2742	2750	2761	2674	2698	2619	2370	2338	2524
	% CHG MO.	-5.3%	-1.0%	-8.5%	-16.3%	-10.0%								
	% CHG YR.	-5.3%	-3.2%	-5.1%	-8.2%	-8.6%								

CON STATION DOWN DUE TO CONSTRUCTION
REP STATION DOWN DUE TO REPAIRS
NEW NEW STATION, NO PRIOR DATA
***** TRAFFIC ESTIMATED DUE TO INSUFFICIENT DATA

PART 2

TRUCK TRAFFIC

**NORTH DAKOTA DEPARTMENT OF TRANSPORTATION
ATR CLASS LOCATIONS**

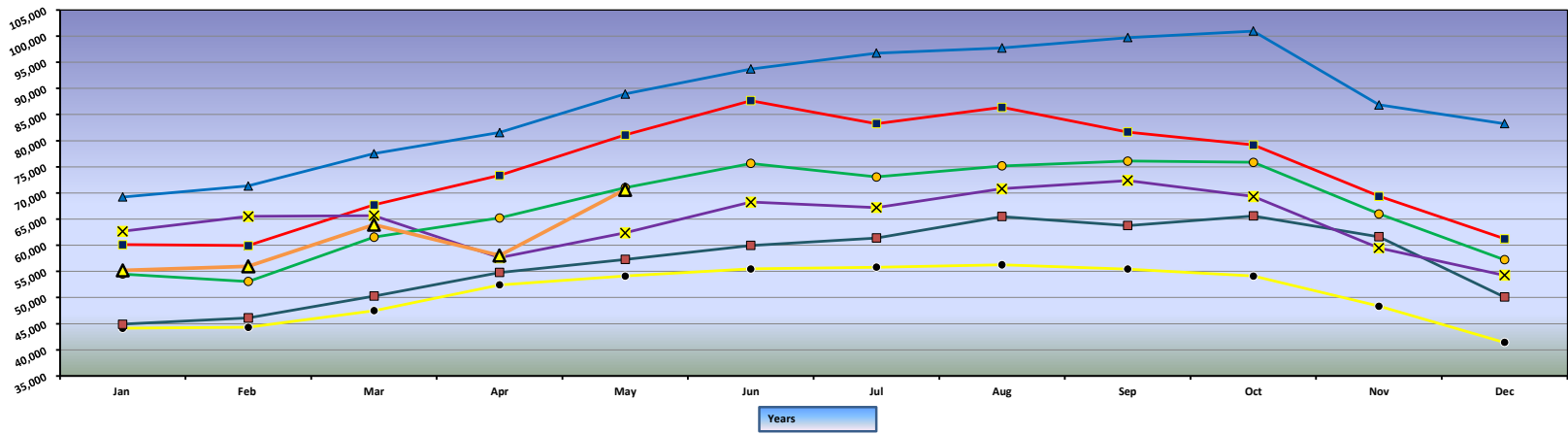
STATION	NAME	HIGHWAY	REF POINT	OFF SET	TYPE	LOCATION
URBAN INTERSTATE 94						
217	FARGO (U)	94	352.000	0.3327	Class	RED RIVER BRIDGE
283	BISMARCK (U)	94	158.000	0.8538	Class	0.4 MILES WEST OF US 83 INT.
RURAL INTERSTATE 94						
207	MEDINA	94	231.000	0.2923	Class	0.9 MILES EAST OF MEDINA
223	NEW SALEM	94	126.000	0.8803	Class	0.8 MILES WEST OF ND 31 INT.
245	TOWER CITY	94	312.000	0.5100	Class	2.3 MILES WEST OF BUFFALO INT.
279	PAINTED CANYON	94	34.000	0.6637	Class	7.8 MILES WEST OF US 85 INT.
URBAN INTERSTATE 29						
235	FARGO (U)	29	66.255	0.5725	Class	NORTH OF 12TH AVE.
RURAL INTERSTATE 29						
211	BUXTON	29	112.000	0.8614	Class	4.0 MILES NORTH OF MAYVILLE INT.
243	BOWESMONT	29	196.014	0.5726	Class	0.5 MILES NORTH OF BOWESMONT
265	MOORETON	29	25.000	0.0149	Class	2.5 MILES NORTH OF ND 13
285	DAVENPORT	29	55.000	0.4798	Class	1.3 MILES NORTH OF DAVENPORT INT
RURAL PRINCIPAL ARTERIAL						
201	RAY	2	51.000	0.2986	Class	2.1 MILES WEST OF RAY
203	MAX	83	168.000	0.9400	Class	3.3 MILES SOUTH OF ND 53
205	GWINNER	13	337.000	0.2241	Class	2.1 MILES WEST OF ND 32
215	JAMESTOWN	52	259.000	0.5408	Class	2.5 MILES NORTH OF JAMESTOWN
219	MANDAN	6	55.000	0.8718	Class	11.0 MILES SOUTH OF MANDAN
221	FAIRFIELD	85	80.000	0.8850	Class	5.1 MILES NORTH OF I-94
229	COOPERSTOWN	200	345.000	0.2602	Class	4.0 MILES EAST OF COOPERSTOWN
233	FOXHOLM	52	78.000	0.2600	Class	1.5 MILES SOUTHEAST OF FOXHOLM
237	NEKOMA	1	205.000	0.2195	Class	8.5 MILES SOUTH LANGDON
239	NEW TOWN	23	42.000	0.8986	Class	4.7 MILES EAST OF ND 22
241	BOTTINEAU	5	173.000	0.9523	Class	0.2 MILES WEST OF ND 14
251	HAGUE	83	1.000	0.1144	Class	1.1 MILES NORTH OF SOUTH DAKOTA LINE
253	RUGBY	2	207.000	0.3265	Class	3.5 MILES WEST OF ND 3
255	CROSBY	5	28.000	0.7521	Class	6.0 MILES WEST OF CROSBY
257	WILLISTON	2	2.000	0.3979	Class	2.4 MILES EAST OF MONTANA LINE
261	CARRINGTON	281	117.000	0.9013	Class	5.5 MILES NORTH OF JUNCTION WITH HWY 200
271	GOLDEN VALLEY	200	131.000	0.0000	Class	0.7 MILES EAST OF GOLDEN VALLEY
273	NEW LEIPZIG	21	67.000	0.5500	Class	2.1 MILES WEST OF ND 49
281	SAWYER	52	102.000	0.7136	Class	WEST OF SAWYER
297	WILLISTON_NW	85	193.000	0.7000	Class	NW WILLISTON TRUCK RELIEVER ROUTE
299	KILLDEER200W	200	88.000	0.5200	Class	6.7 MILES WEST OF JCT. ND 22 AND ND 200
303	MICHIGAN	2	296.000	0.6500	Class	4.0 MILES EAST OF ND 1
307	WASHBURN	83	130.000	0.7300	Class	NORTH OF WASHBURN
309	NEWTOWN_EAST	23	58.000	0.7000	Class	8.4 MILES EAST OF NEW TOWN
311	WILLISTON_2N	2	27.000	0.6300	Class	5.2 MILES NORTH OF WILLISTON
315	RYDER_E23___	23	102.000	0.2000	Class	3.3 MILES WEST OF THE JUNCTION WITH US 83
337	BLAISDELL_E2	2	107.000	0.1000	Class	1.0 MILES EAST OF BLAISDELL
339	GRASSY_BUTTE	85	113.000	0.8500	Class	1.3 MILES NORTH OF GRASSY BUTTE
341	ALEXANDER85W	85	162.000	0.2080	Class	1/2 MILE W OF ALEXANDER
343	WATFORD_E23_	23	10.000	0.7000	Class	9.1 MILES EAST OF WATFORD CITY
345	WILLIAMS_N85	85	205.000	0.4800	Class	15.4 MILES NORTH OF WILLISTON
349	BEULAH_S49__	49	91.000	0.7700	Class	10.5 MILES SOUTH OF BEULAH
351	COLUMBUS_W5	5	52.000	0.2000	Class	3.2 MILES EAST OF NOONAN
353	GRANVILLE_E2	2	177.000	0.7600	Class	8.3 MILES EAST OF GRANVILLE
355	MOHALL_W5___	5	121.000	0.9700	Class	3.6 MILES WEST OF MOHALL
419	EMERADO_W2	2	340.000	0.5000	Class	2.5 MILES WEST OF EMERADO
423	HARVEY_N3___	3	165.000	0.5600	Class	5.6 MILES NORTH OF HARVEY
429	LAKOTA_S1___	1	160.000	0.3800	Class	1.6 MILES SOUTH OF LAKOTA
447	DUNSEITH_E__	281	250.000	0.2700	Class	2.95 MILES EAST OF DUNSEITH

**NORTH DAKOTA DEPARTMENT OF TRANSPORTATION
ATR CLASS LOCATIONS**

STATION	NAME	HIGHWAY	REF POINT	OFF SET	TYPE	LOCATION
RURAL PRINCIPAL ARTERIAL						
449	SHEYENNE_N__	281	141.000	0.4800	Class	2.5 MILES NORTH OF SHEYENNE
RURAL MINOR ARTERIAL						
231	GRAFTON	17	122.000	0.1293	Class	5.5 MILES WEST OF GRAFTON
247	COURTENAY	20	20.000	0.4196	Class	1.8 MILES SOUTH OF ND 9
249	GARRISON	37	54.000	0.9548	Class	1.0 MILES WEST OF GARRISON
275	HANNOVER	31	97.000	0.0758	Class	1.2 MILES NORTH OF HANNOVER
289	MANNING	22	81.000	0.5055	Class	SOUTH OF MANNING
291	MARMARTH	12	4.000	0.8670	Class	1.0 MILE WEST OF MARMARTH
293	KILLDEER	22	112.000	0.1350	Class	5.9 MILES NORTH OF KILLDEER
295	NECHE	18	239.000	0.3300	Class	1.2 MILES SOUTH OF NECHE
373	DICKINSON22S	22	57.000	0.2400	Class	11.4 MILES SOUTH OF DICKINSON
453	OAKES_S1____	1	13.000	0.3500	Class	3.0 MILES SOUTH OF OAKES
461	THOMPSON_W15	15	129.000	0.0000	Class	3.4 MILES WEST OF THOMPSON
727	ENDERLIN_E46	46	84.000	0.2000	Class	EAST EDGE OF ENDERLIN
759	WILTON_E36__	36	2.000	0.2600	Class	2.3 MILES SE OF WILTON
RURAL MAJOR COLLECTOR-STATE						
267	TRENTON	1804	329.000	0.8846	Class	1.5 MILES NORTHEAST OF TRENTON
493	ST_THOMAS_W_	66	117.000	0.4000	Class	5.7 MILES WEST OF ST. THOMAS
783	KULM_S56____	56	14.000	0.5800	Class	4.7 MILES SOUTH OF KULM
RURAL MAJOR COLLECTOR-COUNTY						
101	MINOT55ST_NE	5145 C	0.000	0.3000	Class	CMC 5145 - 0.3 MILES NORTH OF US2
103	MINOT46AV_NE	5138 C	8.000	0.2000	Class	CMC 5138 - 2.1 MILES EAST OF US 83
225	STERLING	836 C	14.000	0.2100	Class	CMC 0836 - 1.9 MILES WEST OF US 83
URBAN PRINCIPAL ARTERIAL						
287	GRAND FORKS	81 B	942.000	0.4092	Class	S. WASHINGTON BETWEEN 24 AND 28 AVE. S.
503	BISMARCK (U)	810	5.000	0.5750	Class	BIS. EXPWY. SOUTH OF E. MAIN STREET
513	WFARGO_MAIN_ (U)	10 B	933.000	0.4400	Class	MAIN ST. WEST OF 15TH ST NW

Average Daily Truck Traffic
All ATR's

TADT

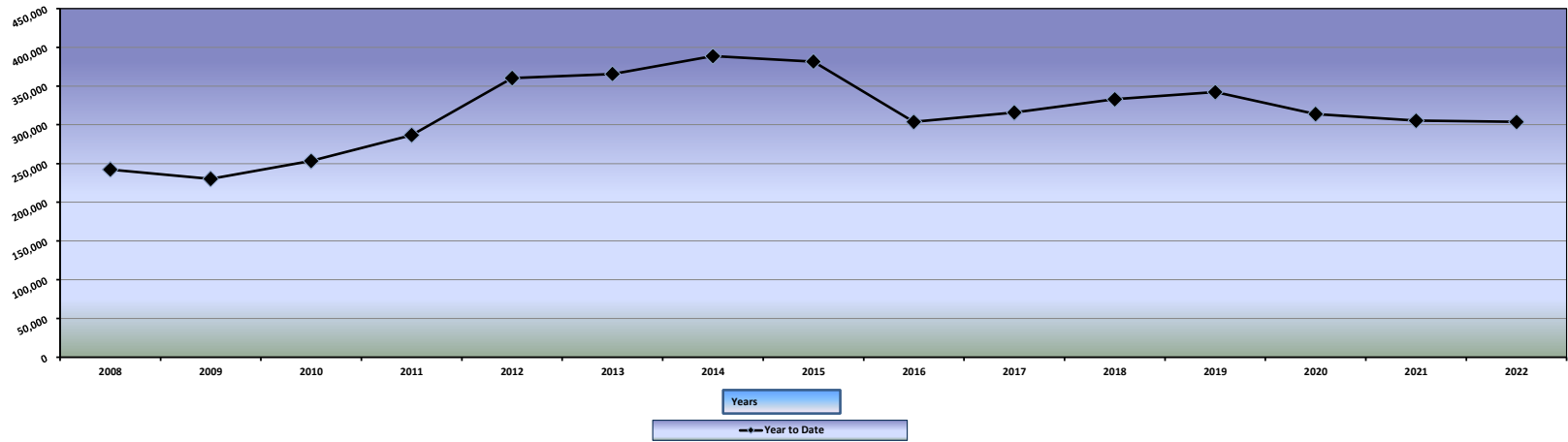


Years

● 2008 ■ 2010 ▲ 2014 ■ 2019 × 2020 ● 2021 ▲ 2022

Average Daily Truck Traffic All ATR's Year to Date (January-May)

TADT



**STATE OF NORTH DAKOTA
AUTOMATIC TRAFFIC RECORDER DATA BY MONTH
TRUCK AVERAGE DAILY TRAFFIC AND PERCENT CHANGE BY STATION**

DIRECTION	YEAR	JAN	FEB	MAR	APR	MAY	JUN	JUL	AUG	SEP	OCT	NOV	DEC	ANNUAL
RURAL MAJOR COLLECTOR - STATE														
STATION: 493 - ST_THOMAS_W														
LOCATION: HIGHWAY 66 - 5.7 MILES WEST OF ST. THOMAS														
EAST	2022	47	47	57	59	94								
	2021	50	50	54	83	78	91	102	110	131	340	63	53	100
	% CHG MO.	-6.0%	-6.0%	5.6%	-28.9%	20.5%								
		% CHG YR.	-6.0%	-6.0%	-1.9%	-11.4%	-3.5%							
WEST	2022	46	48	56	57	92								
	2021	54	52	54	83	77	102	99	108	129	337	64	54	101
	% CHG MO.	-14.8%	-7.7%	3.7%	-31.3%	19.5%								
		% CHG YR.	-14.8%	-11.3%	-6.3%	-14.8%	-6.6%							
EAST & WEST	2022	93	95	113	116	186								
	2021	104	102	108	166	155	193	201	218	260	677	127	107	202
	% CHG MO.	-10.6%	-6.9%	4.6%	-30.1%	20.0%								
		% CHG YR.	-10.6%	-8.7%	-4.1%	-13.1%	-5.0%							
STATION: 783 - KULM_S56														
LOCATION: HIGHWAY 56 - 4.7 MILES SOUTH OF KULM														
NORTH	2022	10	11	12	11	19								
	2021	12	8	12	16	18	21	24	17	27	29	22	13	18
	% CHG MO.	-16.7%	37.5%	0.0%	-31.3%	5.6%								
		% CHG YR.	-16.7%	5.0%	3.1%	-8.3%	-4.5%							
SOUTH	2022	11	12	15	14	26								
	2021	15	11	13	19	21	25	27	21	31	36	24	14	21
	% CHG MO.	-26.7%	9.1%	15.4%	-26.3%	23.8%								
		% CHG YR.	-26.7%	-11.5%	-2.6%	-10.3%	-1.3%							
NORTH & SOUTH	2022	21	23	27	25	45								
	2021	27	19	25	35	39	46	51	38	58	65	46	27	40
	% CHG MO.	-22.2%	21.1%	8.0%	-28.6%	15.4%								
		% CHG YR.	-22.2%	-4.3%	0.0%	-9.4%	-2.8%							
RURAL MAJOR COLLECTOR - COUNTY														
STATION: 101 - MINOT55ST_NE														
LOCATION: HIGHWAY 5145C - CMC 5145 - 0.3 MILES NORTH OF US2														
NORTH	2022	144	141	142	159	192								
	2021	160	150	165	181	230	227	224	239	218	234	194	150	198
	% CHG MO.	-10.0%	-6.0%	-13.9%	-12.2%	-16.5%								
		% CHG YR.	-10.0%	-8.1%	-10.1%	-10.7%	-12.2%							
SOUTH	2022	136	130	133	150	182								
	2021	163	145	163	174	222	223	232	251	225	232	186	141	196
	% CHG MO.	-16.6%	-10.3%	-18.4%	-13.8%	-18.0%								
		% CHG YR.	-16.6%	-13.6%	-15.3%	-14.9%	-15.7%							
NORTH & SOUTH	2022	280	271	275	309	374								
	2021	323	295	328	355	452	450	456	490	443	466	380	291	394
	% CHG MO.	-13.3%	-8.1%	-16.2%	-13.0%	-17.3%								
		% CHG YR.	-13.3%	-10.8%	-12.7%	-12.8%	-13.9%							
STATION: 103 - MINOT46AV_NE														
LOCATION: HIGHWAY 5138C - CMC 5138 - 2.1 MILES EAST OF US 83														
EAST	2022	60	53	55	57	84								
	2021	69	59	75	81	101	106	107	121	109	106	80	63	90
	% CHG MO.	-13.0%	-10.2%	-26.7%	-29.6%	-16.8%								
		% CHG YR.	-13.0%	-11.7%	-17.2%	-20.8%	-19.7%							
WEST	2022	64	56	62	59	95								
	2021	69 *	59 *	75 *	81 *	101 *	106 *	107 *	121 *	112	111	83	68	91
	% CHG MO.	-7.2%	-5.1%	-17.3%	-27.2%	-5.9%								
		% CHG YR.	-7.2%	-6.3%	-10.3%	-15.1%	-12.7%							
EAST & WEST	2022	124	109	117	116	179								
	2021	138	118	150	162	202	212	214	242	221	217	163	131	181
	% CHG MO.	-10.1%	-7.6%	-22.0%	-28.4%	-11.4%								
		% CHG YR.	-10.1%	-9.0%	-13.8%	-18.0%	-16.2%							
STATION: 225 - STERLING														
LOCATION: HIGHWAY 836C - CMC 0836 - 1.9 MILES WEST OF US 83														
EAST	2022	53	56	84	84 *	104								
	2021	56	53	81	102	122	111	99	106	119	98	79	67	91
	% CHG MO.	-5.4%	5.7%	3.7%	-17.6%	-14.8%								
		% CHG YR.	-5.4%	0.0%	1.6%	-5.1%	-8.0%							

STATE OF NORTH DAKOTA
 AUTOMATIC TRAFFIC RECORDER DATA BY MONTH
 TRUCK AVERAGE DAILY TRAFFIC AND PERCENT CHANGE BY STATION

DIRECTION	YEAR	JAN	FEB	MAR	APR	MAY	JUN	JUL	AUG	SEP	OCT	NOV	DEC	ANNUAL
URBAN PRINCIPAL ARTERIAL														
STATION: 513 - WFARGO_MAIN_ (U)														
LOCATION: HIGHWAY 10B - MAIN ST. WEST OF 15TH ST NW														
EAST &	2022	887	872	959	930	1120								
WEST	2021	928	946	1033	1179	1250	1355	1269	1262	1241	1071	1028	893	1121
	% CHG MO.	-4.4%	-7.8%	-7.2%	-21.1%	-10.4%								
	% CHG YR.	-4.4%	-6.1%	-6.5%	-10.7%	-10.6%								

- CON** STATION DOWN DUE TO CONSTRUCTION
- REP** STATION DOWN DUE TO REPAIRS
- NEW** NEW STATION, NO PRIOR DATA
- *** TRAFFIC ESTIMATED DUE TO INSUFFICIENT DATA