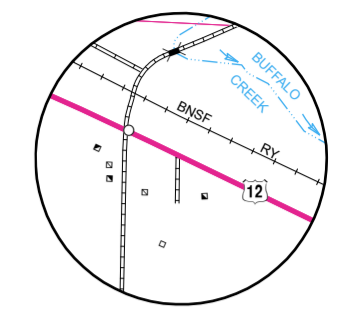
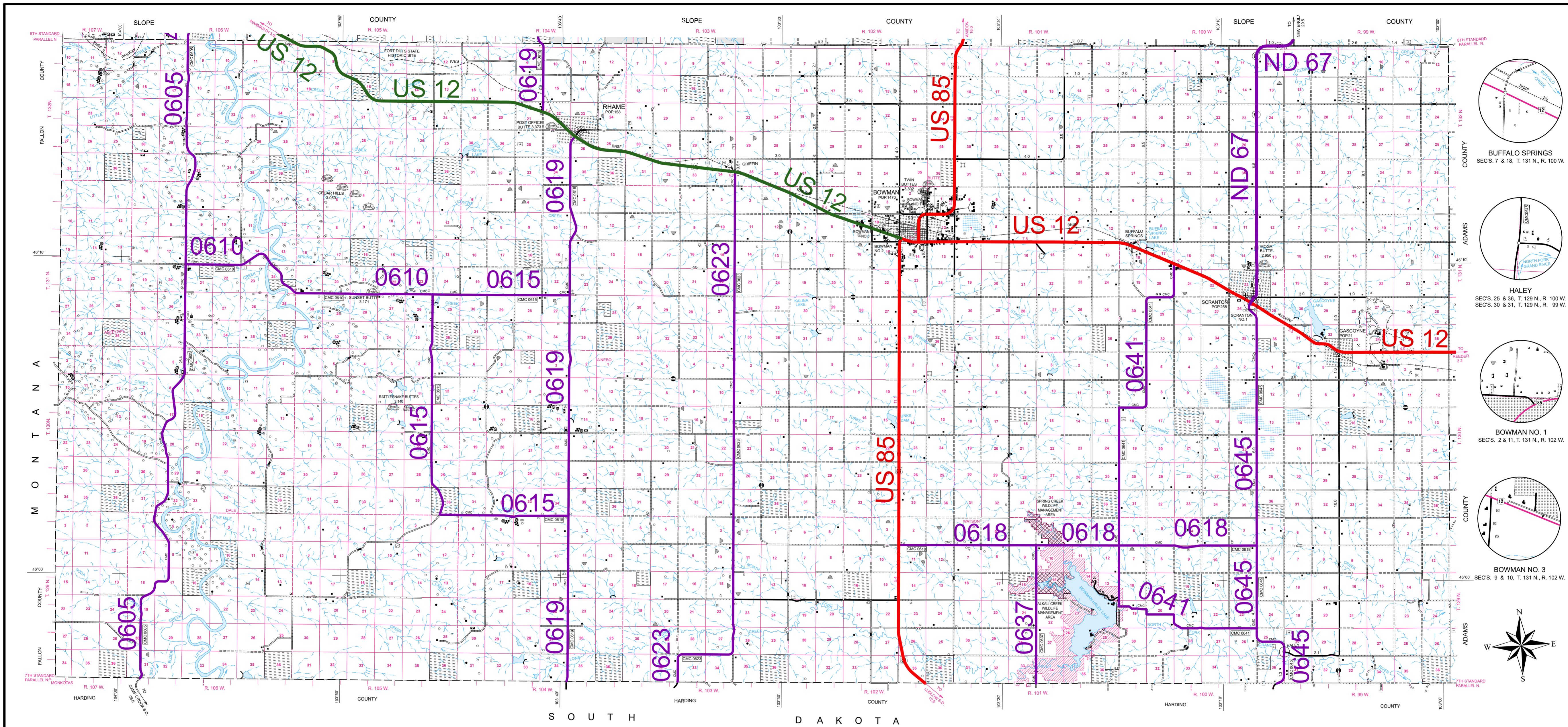
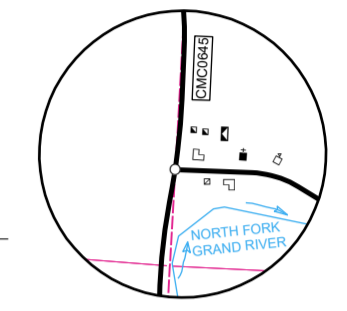


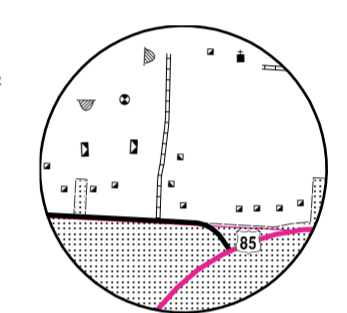
# 2007 FUNCTIONAL CLASSIFICATION



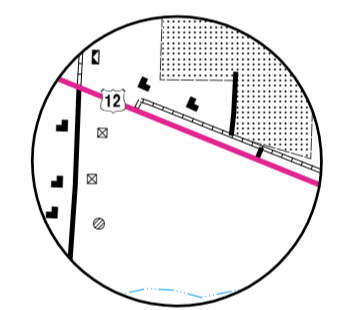
BUFFALO SPRINGS  
SECS. 7 & 18, T. 131 N., R. 100 W.



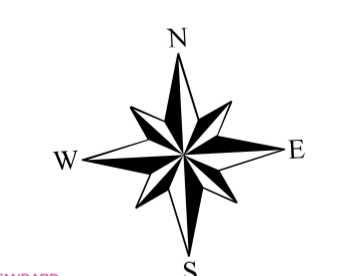
HALEY  
SECS. 25 & 36, T. 129 N., R. 100 W.  
SECS. 30 & 31, T. 129 N., R. 99 W.



BOWMAN NO. 1  
SECS. 2 & 11, T. 131 N., R. 102 W.



BOWMAN NO. 3  
SECS. 9 & 10, T. 131 N., R. 102 W.



**NAME AND LOCATION OF ORGANIZED CIVIL TOWNSHIPS THOSE UNORGANIZED ARE SO NOTED**

T. 132 N.-R. 107 W. UNORGANIZED	T. 130 N.-R. 107 W. UNORGANIZED
T. 132 N.-R. 106 W. UNORGANIZED	T. 130 N.-R. 106 W. UNORGANIZED
T. 132 N.-R. 105 W. UNORGANIZED	T. 130 N.-R. 105 W. UNORGANIZED
T. 132 N.-R. 104 W. RHAME	T. 130 N.-R. 104 W. NEMO
T. 132 N.-R. 103 W. MARION	T. 130 N.-R. 103 W. AMOR
T. 132 N.-R. 102 W. STAR	T. 130 N.-R. 102 W. GEM
T. 132 N.-R. 101 W. GRAINBELT	T. 130 N.-R. 101 W. BOYSEN
T. 132 N.-R. 100 W. STILWATER	T. 130 N.-R. 100 W. CHITING
T. 132 N.-R. 99 W. BUENA VISTA	T. 130 N.-R. 99 W. GASCOYNE
T. 131 N.-R. 107 W. SUNNY SLOPE	T. 129 N.-R. 107 W. UNORGANIZED
T. 131 N.-R. 106 W. SUNNY SLOPE	T. 129 N.-R. 106 W. UNORGANIZED
T. 131 N.-R. 105 W. UNORGANIZED	T. 129 N.-R. 105 W. UNORGANIZED
T. 131 N.-R. 104 W. ADELAIDE	T. 129 N.-R. 104 W. LANGBERG
T. 131 N.-R. 103 W. HART	T. 129 N.-R. 103 W. GRAND RIVER
T. 131 N.-R. 102 W. BOWMAN	T. 129 N.-R. 102 W. LADD
T. 131 N.-R. 101 W. TALBOT	T. 129 N.-R. 101 W. MINNEHAHA
T. 131 N.-R. 100 W. SCRANTON	T. 129 N.-R. 100 W. GOLDFIELD
T. 131 N.-R. 99 W. FISCHBEIN	T. 129 N.-R. 99 W. HALEY

**ROADS AND ROADWAY FEATURES**

PRIMITIVE ROAD	UNIMPROVED ROAD
GRAVEL GRADED AND DRAINED ROAD	GRAVEL GRADED AND DRAINED ROAD
PAVED ROAD	STREETS IN UNINCORPORATED AREAS
COUNTY MAJOR COLLECTOR ROUTE NUMBER	POINTS BETWEEN WHICH DISTANCES ARE MEASURED
STATE HIGHWAY SYSTEM	STRUCTURES
HIGHWAY BRIDGE, GENERAL	DAM WITH ROAD
MINOR DRAINAGE STRUCTURE	CONCRETE FORD OR DIP
FORD - ROAD ESTABLISHED	

**GENERAL LEGEND**

INDUSTRIAL STORE OR SMALL BUSINESS ESTABLISHMENT	FARM UNITS, DWELLINGS, ETC. FARM UNIT (FARM UNITS SHOWN IN MUNICIPAL LIMITS INDICATE FARM BUILDINGS FOR FARM USE)
FACTORY OR INDUSTRIAL PLANT	DWELLING OTHER THAN FARM
OIL TANK	ROWS OR GROUPS OF DWELLINGS
GAS TANK	CLOSELY SPACED (FIGURE DENOTES NUMBER OF DWELLINGS)
GROUP OF STORAGE TANKS (OIL OR GAS)	PUMPING STATION (OIL OR GAS)
CHURCH	CEMETERY
RAILROADS	RAILROAD STATION
RAILROAD GRADE CROSSING	RAILROAD ABOVE
RAILROAD BRIDGE	AIRPORTS
SCHOOLHOUSE	TOWNSHIP, COMPLETE FACILITIES
TOWNSHIP, GRANGE, OR COMMUNITY HALL	LANDING AREA OR STRIP
NATURAL FEATURES	NAVIGATION
PROMINENT ELEVATION - WITH NAME	DOCK, PIER, OR LANDING

**PUBLIC SERVICE FACILITIES**

HIGHWAY GARAGE	GARBAGE OR RUBBISH DUMP
SEWAGE DISPOSAL PLANT	AUTOMOBILE GRAVEYARD
WATER SUPPLY STAND PIPE OR TANK	POWER SUBSTATION
CONSERVATION AND RECREATION	PICNIC GROUND
BATHING BEACH OR SWIMMING POOL	CAMP SITE, NO PERMANENCE (TENTS OR TRAILER PARKING)
GOLF GROUND OR COUNTRY CLUB	FAIR GROUND, RACE COURSE, SPEEDWAY
RIFLE CLUB	MISCELLANEOUS
TRIANGULATION STATION	DOT TO INDICATE LOCATION OF ANY CULTURAL FEATURE
SHOWN OUT OF POSITION	ALL VACANT CULTURE INDICATED BY OPEN SYMBOL
LATITUDE AND LONGITUDE	

**FUNCTIONAL CLASSIFICATION**

INTERSTATE
PRINCIPAL ARTERIAL
MINOR ARTERIAL
MAJOR COLLECTOR

REVISION DATE AND CHANGE  
04-07-2015 Addition of 10 miles to CMC0610

**GENERAL HIGHWAY MAP BOWMAN COUNTY NORTH DAKOTA**

PREPARED BY THE NORTH DAKOTA DEPARTMENT OF TRANSPORTATION PLANNING AND ASSET MANAGEMENT DIVISION

IN COOPERATION WITH THE U.S. DEPARTMENT OF TRANSPORTATION FEDERAL HIGHWAY ADMINISTRATION

SCALE  
0 0.25 0.5 Miles

SCALE FOR ENLARGEMENTS  
0 1 2 3 4 5 Kilometers

2020

BASED ON AERIAL PHOTOGRAPHY OF 1957 AERIAL INVENTORY OF 2020

UNIVERSAL TRANSVERSE MERCATOR ZONE 14 NORTH AMERICAN DATUM 83

**GENERAL HIGHWAY MAP BOWMAN COUNTY NORTH DAKOTA**

PREPARED BY THE NORTH DAKOTA DEPARTMENT OF TRANSPORTATION PLANNING AND ASSET MANAGEMENT DIVISION

IN COOPERATION WITH THE U.S. DEPARTMENT OF TRANSPORTATION FEDERAL HIGHWAY ADMINISTRATION

SCALE  
0 0.25 0.5 Miles

SCALE FOR ENLARGEMENTS  
0 1 2 3 4 5 Kilometers

2020

BASED ON AERIAL PHOTOGRAPHY OF 1957 AERIAL INVENTORY OF 2020

UNIVERSAL TRANSVERSE MERCATOR ZONE 14 NORTH AMERICAN DATUM 83

**Notice of Disclaimer**  
The North Dakota Department of Transportation (NDOT) makes this map available on an "as is" basis as a public service. Under no circumstances does NDOT warrant or certify the information to be free of errors or deficiencies of any kind. NDOT specifically disclaims all warranties, express or implied, including but not limited to the warranties of merchantability and fitness for a particular purpose.

GENERAL HIGHWAY MAP BOWMAN COUNTY NORTH DAKOTA 6-1