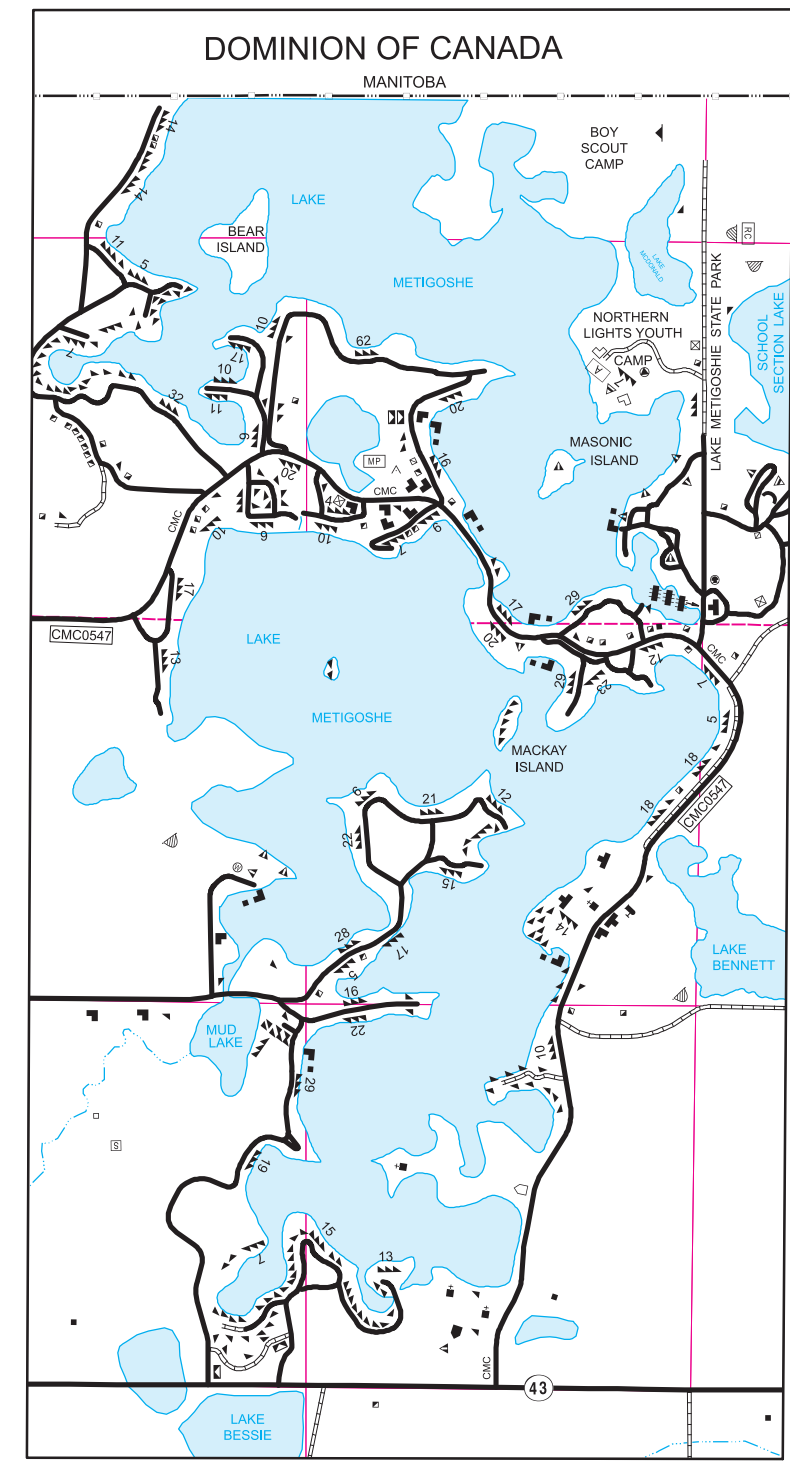
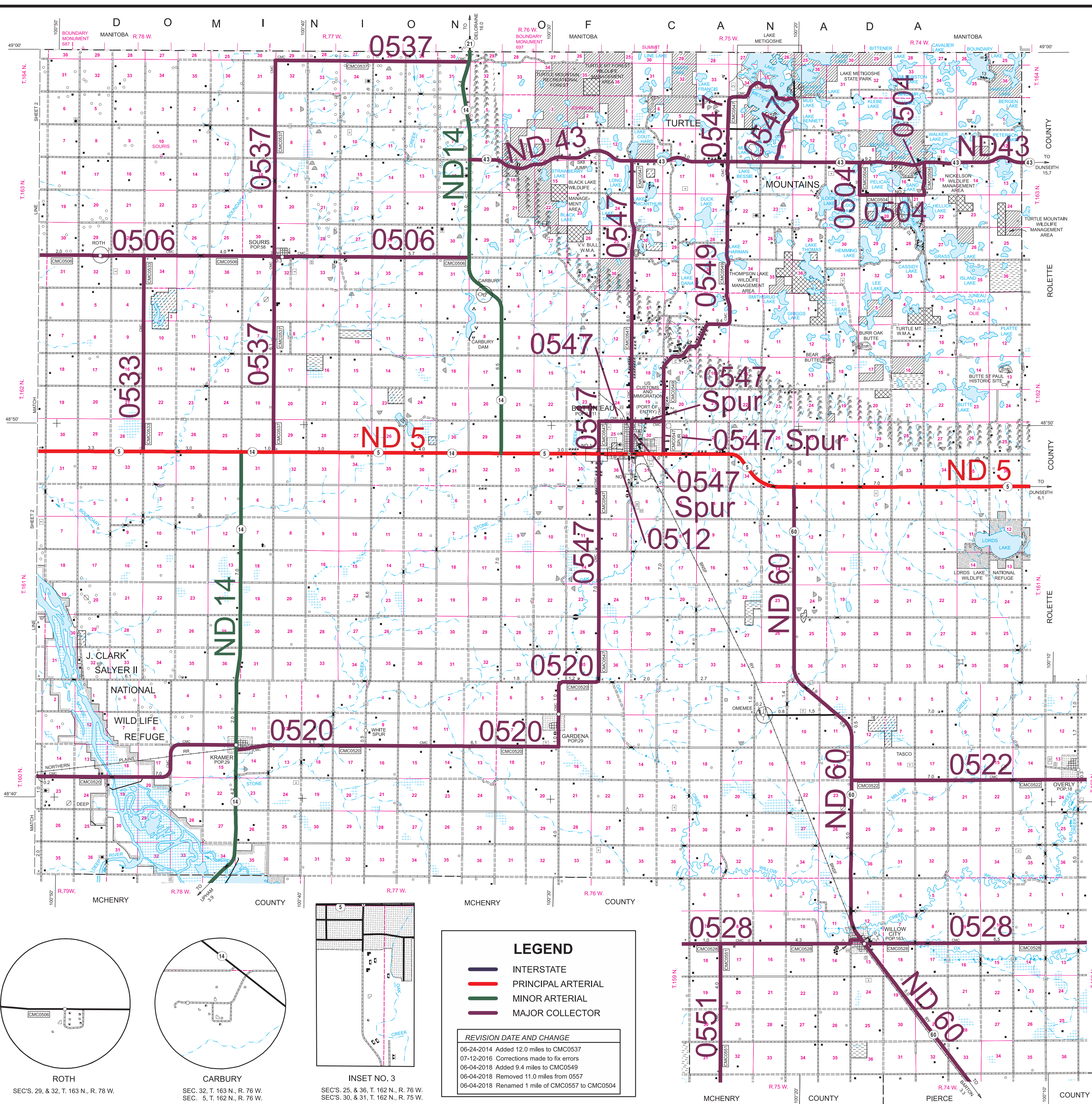
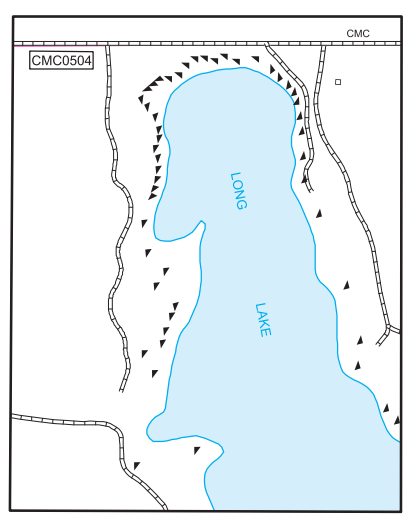


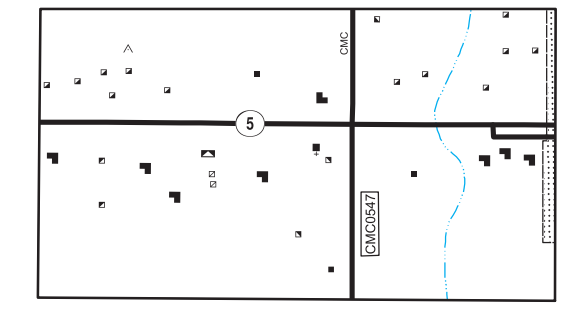
# 2007 FUNCTIONAL CLASSIFICATION



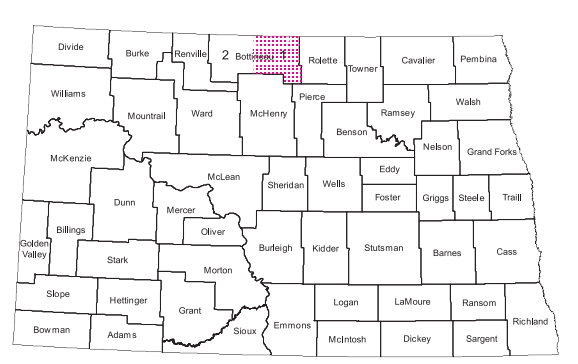
**LAKE METIGOSHE**  
 SEC'S. 25, 26, 27, 34, 35 & 36, T. 164 N., R. 75 W.  
 SEC'S. 1, 2, 3, 10, 11, 12, 13, 14 & 15, T. 163 N., R. 75 W.



**INSET NO. 2**  
 SEC'S. 16, & 21, T. 163 N., R. 74 W.

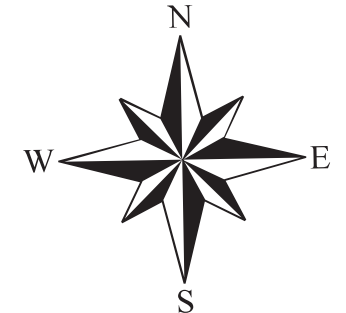


**INSET NO. 1**  
 SEC'S. 25, 26, 35, & 36, T. 162 N., R. 76 W.



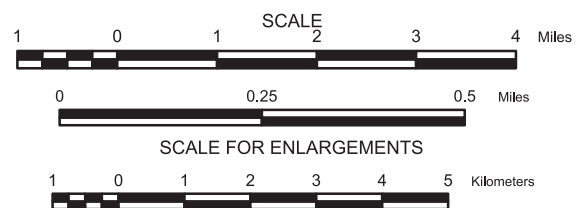
**DIAGRAM OF COUNTIES**

GENERAL LEGEND	
<b>ROADS AND ROADWAY FEATURES</b>	<b>FARM UNITS, DWELLINGS, ETC.</b>
PRIMITIVE ROAD	FARM UNIT (FARM UNITS SHOWN IN MUNICIPAL LIMITS INDICATE FARM BUILDINGS FOR FARM USE)
UNIMPROVED ROAD	DWELLING OTHER THAN FARM
GRADED AND DRAINED ROAD	ROWS OR GROUPS OF DWELLINGS
GRAVEL GRADED AND DRAINED ROAD	CLOSELY SPACED (FIGURE DENOTES NUMBER OF DWELLINGS)
PAVED ROAD	BARRACKS, OR DORMITORIES FOR STUDENTS, WORKERS, MIGRANTS, ETC.
INDIAN SERVICE ROAD	SEASONAL OR SUMMER COLONY
COUNTY MAJOR COLLECTOR	DWELLING
ROUTE NUMBER	SEASONAL DWELLINGS CLOSELY SPACED
POINTS BETWEEN WHICH DISTANCES ARE MEASURED	HOTEL OR INN
U.S. NUMBERED HIGHWAY	CHURCH
STATE HIGHWAY SYSTEM	CHURCH WITH CEMETERY ADJACENT
	TENANT HOUSE
<b>STRUCTURES</b>	<b>PUBLIC SERVICE FACILITIES</b>
HIGHWAY BRIDGE, GENERAL	POST OFFICE
HIGHWAY GRADE SEPARATION	HIGHWAY GARAGE
DAM WITH ROAD	FIRE ENGINE HOUSE
MINOR DRAINAGE STRUCTURE	GARAGE OR RUBBISH DUMP
CONCRETE FORD OR DIP	SEWAGE DISPOSAL PLANT
	SANITARY FILL
<b>DRAINAGE</b>	AUTOMOBILE GRAVEYARD
INTERMITTENT STREAM (NARROW)	SCRAP METAL
NARROW STREAM	WATER SUPPLY STAND PIPE OR TANK
WIDE STREAM	POWER PLANT
WIDE STREAM WITH DAM	POWER SUBSTATION
LAKE, RESERVOIR, OR POND	BOOSTER STATION
LAKE, RESERVOIR, OR POND WITH DAM	COMMUNICATION TOWER
MARSH OR SWAMP LAND	POLICE STATION
CANAL	MUNICIPAL BUILDING
<b>NAVIGATION</b>	<b>INDUSTRIAL</b>
DOCK, PIER, OR LANDING	STORE OR SMALL BUSINESS
	ESTABLISHMENT
<b>RAILROADS</b>	FACTORY OR INDUSTRIAL PLANT
RAILROAD (ANY NUMBER OF TRACKS USED BY A SINGLE OPERATING CO.)	GAS TANK
RAILROAD STATION	GROUP OF STORAGE TANKS (OIL OR GAS)
RAILROAD BELOW	PUMPING STATION (OIL OR GAS)
RAILROAD BRIDGE	GAUGING OR PUMPING STATION
	WAREHOUSE - GENERAL
<b>BOUNDARIES</b>	GRAIN ELEVATOR
MONUMENTED BOUNDARY MARKER	STOCK YARD - LOADING PEN OR CORRAL
NATIONAL BOUNDARY LINE	GRAVEL PIT
STATE OR PROVINCE LINE	MINE - SHAFT OR DRIFT (ANY KIND)
COUNTY LINE	<b>CONSERVATION AND RECREATION</b>
TOWNSHIP LINE	PICNIC GROUND
CORPORATE LINE	PLAYGROUND, BALL FIELD, ETC.
SECTION LINE	SCENIC SITE
MATCH LINE BETWEEN ADJOINING SHEETS OF SAME COUNTY	WATERFOWL PRODUCTION AREA
BOUNDARY TO MARK ENLARGEMENT INSET	CAMP SITE, NO PERMANENCE (TENTS OR TRAILER PARKING)
NATIONAL REFUGES	TOURIST COURT, OR MOTEL
MONUMENT - SMALL, HISTORIC SITE	CAMP OR LODGE
WILDLIFE MANAGEMENT AREA	PERMANENT SITE WITH BUILDINGS)
WATERFOWL PRODUCTION AREA	REST AREA
CAMP SITE, NO PERMANENCE (TENTS OR TRAILER PARKING)	SMALL PARK (SP-STATE, CP-COUNTY, MP-MUNICIPAL, WP-WAYSIDE PARK)
STATE PARKS	GOLF GROUND OR COUNTRY CLUB
STATE SCHOOL LAND	AMUSEMENT PARK OR HALL
RESERVOIR BOUNDARY (TAKING LINE)	FAIR GROUND, RACE COURSE, SPEEDWAY
	GUIDE HOUSE OR GATE HOUSE
<b>AIRPORTS</b>	FISH HATCHERY
AIRFIELD, LIMITED FACILITIES	RIFLE CLUB
LANDING AREA OR STRIP	DRIVE-IN THEATER
AIRWAY LIGHT BEACON, GENERAL	<b>CITY AND VILLAGE CENTERS</b>
<b>MISCELLANEOUS</b>	COUNTY SEAT
TRIANGULATION STATION	OTHER CITIES AND VILLAGES
DOT TO INDICATE LOCATION OF ANY CULTURAL FEATURE	INCORPORATED CITY OR VILLAGE (GENERALIZED)
SHOWN OUT OF POSITION	<b>NATURAL FEATURES</b>
ALL VACANT CULTURE INDICATED BY OPEN SYMBOL	PROMINENT ELEVATION - WITH NAME
LATITUDE AND LONGITUDE	
<b>EDUCATIONAL AND CORRECTIONAL INSTITUTIONS</b>	
SCHOOLHOUSE	
TOWNHALL, GRANGE, OR COMMUNITY HALL	

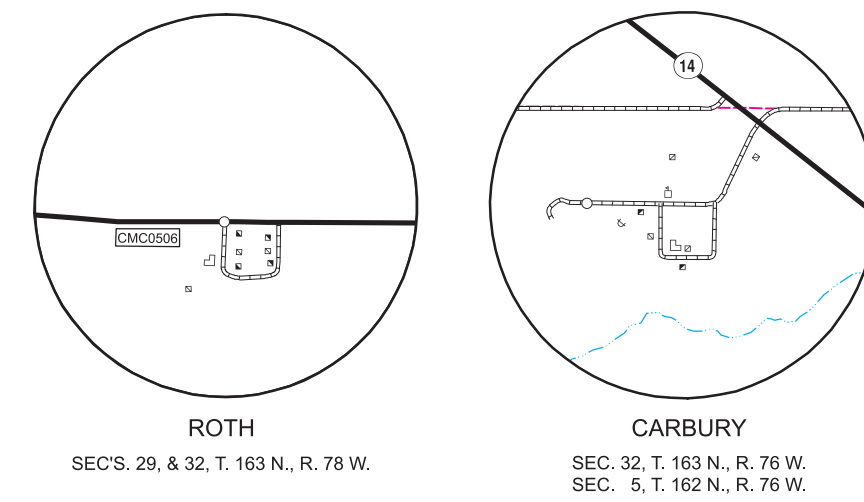


## GENERAL HIGHWAY MAP BOTTINEAU COUNTY NORTH DAKOTA

PREPARED BY THE  
 NORTH DAKOTA DEPARTMENT OF TRANSPORTATION  
 PLANNING / ASSET MANAGEMENT DIVISION  
 IN COOPERATION WITH THE  
 U.S. DEPARTMENT OF TRANSPORTATION  
 FEDERAL HIGHWAY ADMINISTRATION



2015  
 BASED ON AERIAL PHOTOGRAPHY OF 1953  
 AERIAL INVENTORY OF 2015  
 UNIVERSAL TRANSVERSE MERCATOR ZONE 14  
 NORTH AMERICAN DATUM 83



LEGEND	
	INTERSTATE
	PRINCIPAL ARTERIAL
	MINOR ARTERIAL
	MAJOR COLLECTOR

REVISION DATE AND CHANGE	
06-24-2014	Added 12.0 miles to CMC0537
07-12-2016	Corrections made to fix errors
06-04-2018	Added 9.4 miles to CMC0549
06-04-2018	Removed 11.0 miles from 0557
06-04-2018	Renamed 1 mile of CMC0557 to CMC0504